

ALLEGATO N°15

Documentazione fotografica

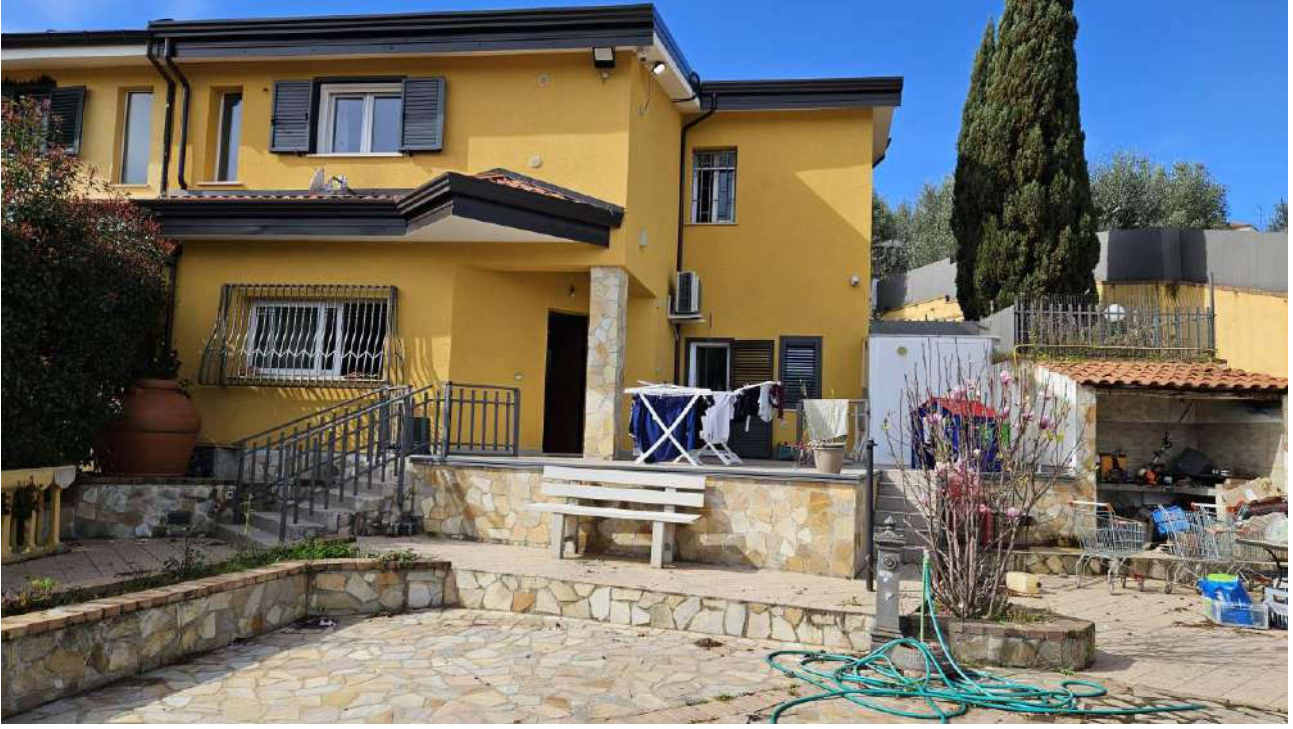


Strada di accesso, prospetti esterni e corte









Piano terra - salone





Piano terra – cucina e ripostiglio

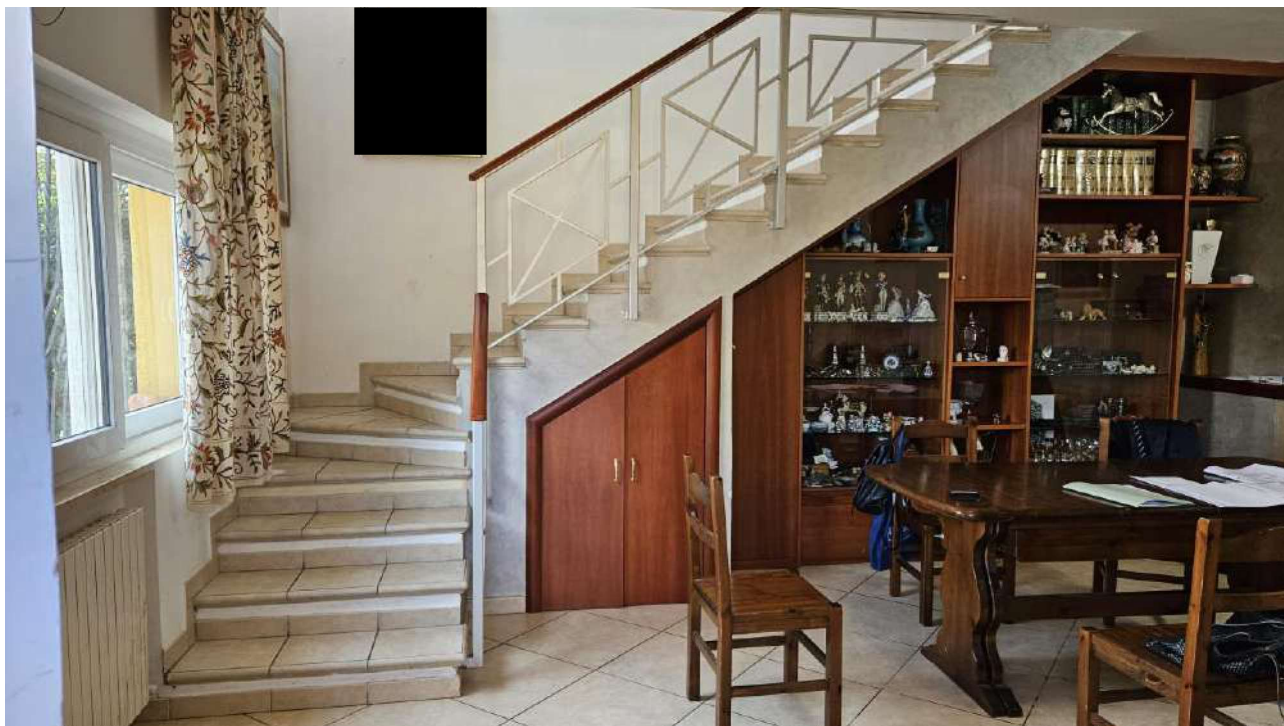




Piano terra - bagno



Scala interna



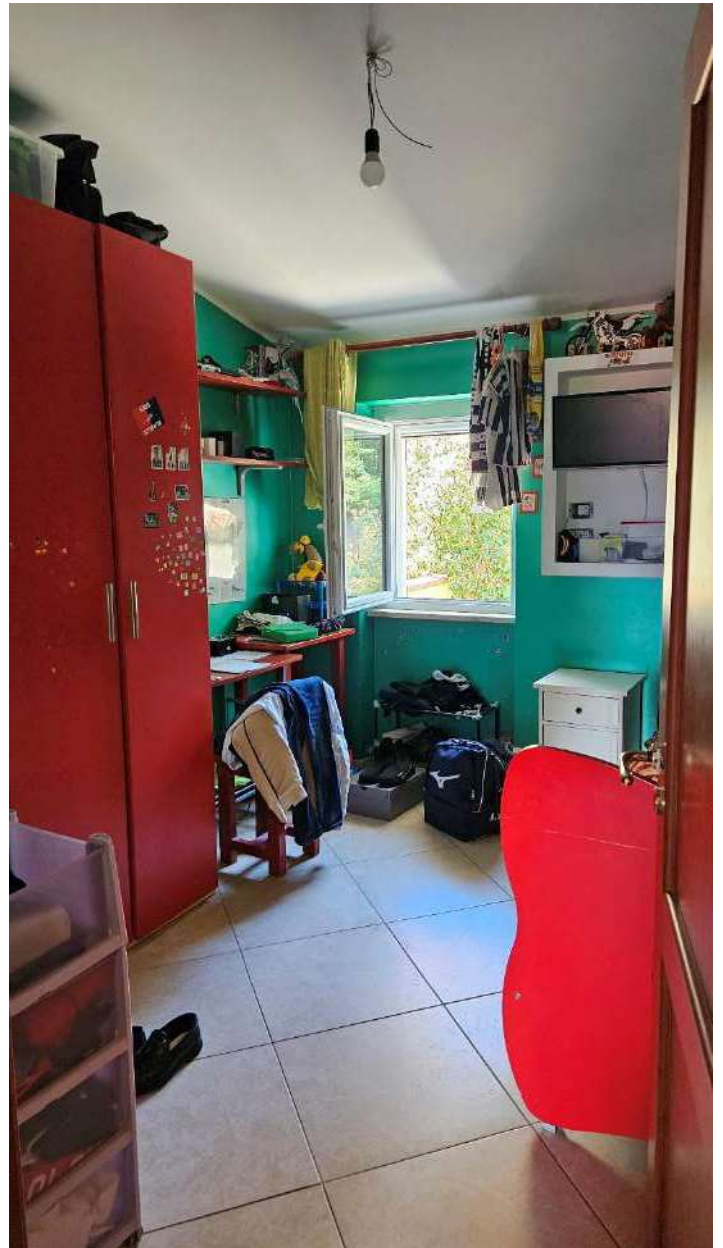
Piano primo - disimpegno



Piano primo – camera matrimoniale

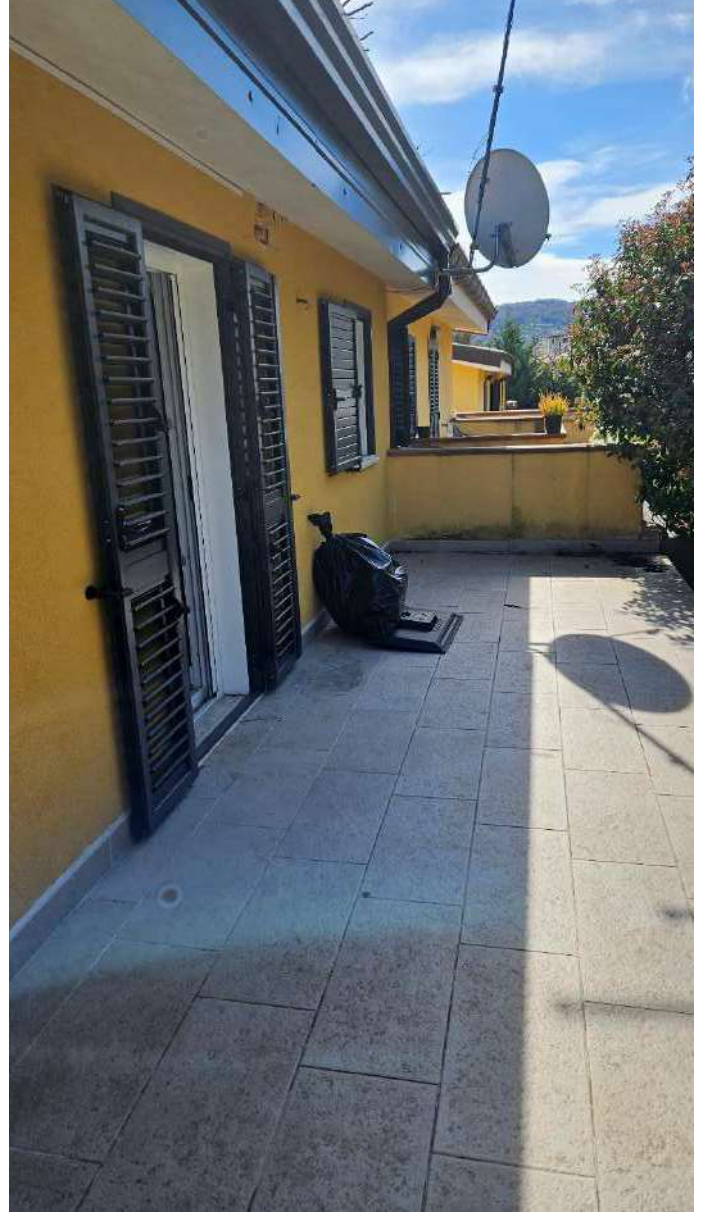


Piano primo - camera 1



Piano primo – camera 2 con balcone





Firmato Da: FALBO EMILIO Emesso Da: INFOCAMERE QUALIFIED ELECTRONIC SIGNATURE CA Serial#: 32c7be



Piano primo - bagno

