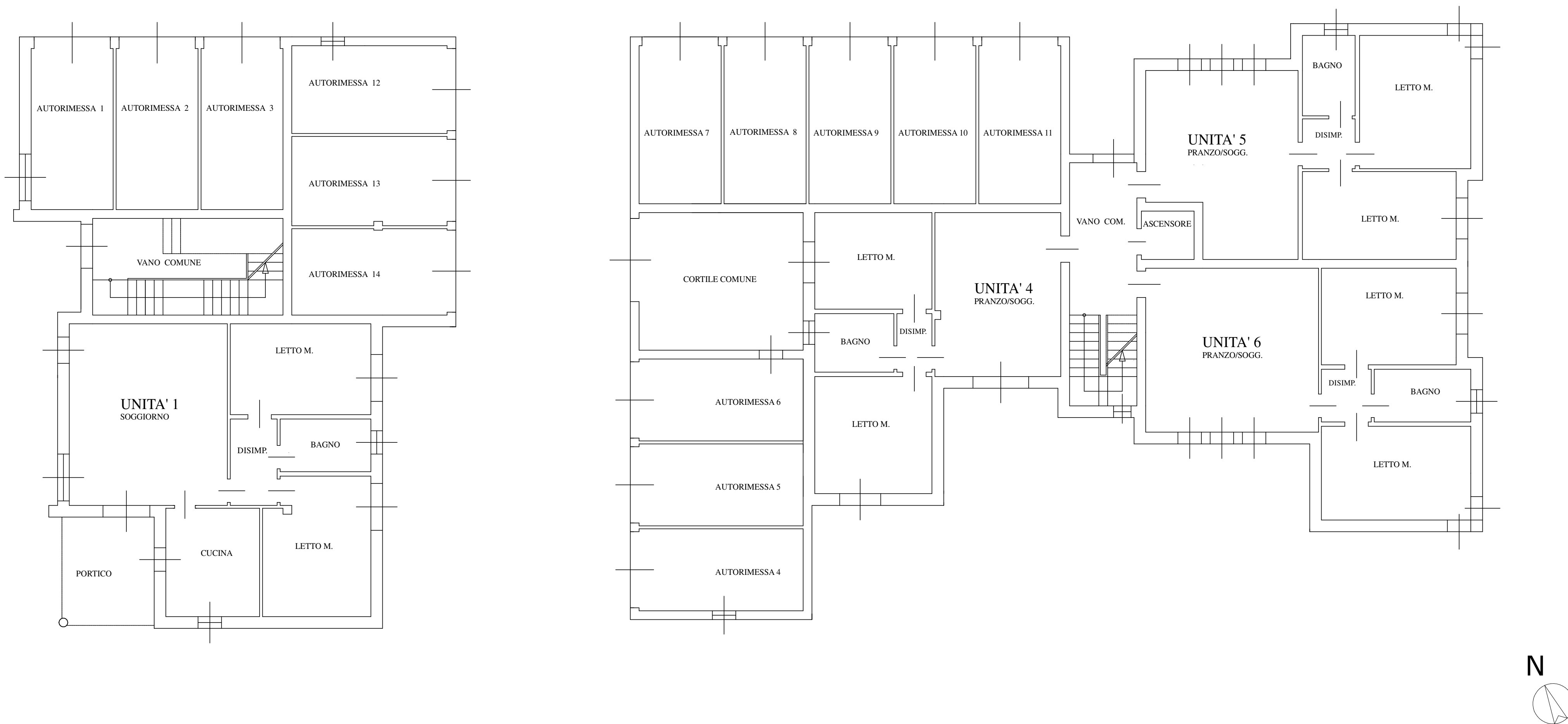
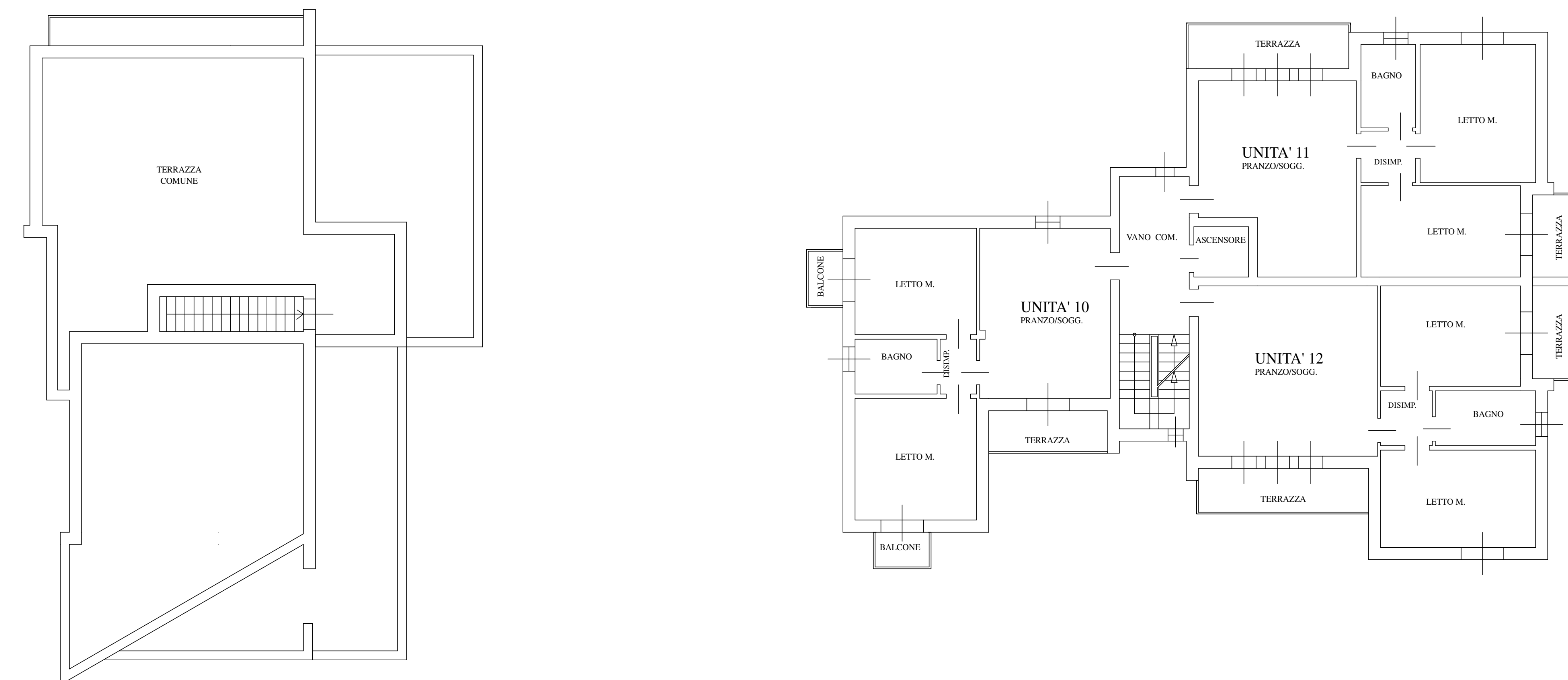


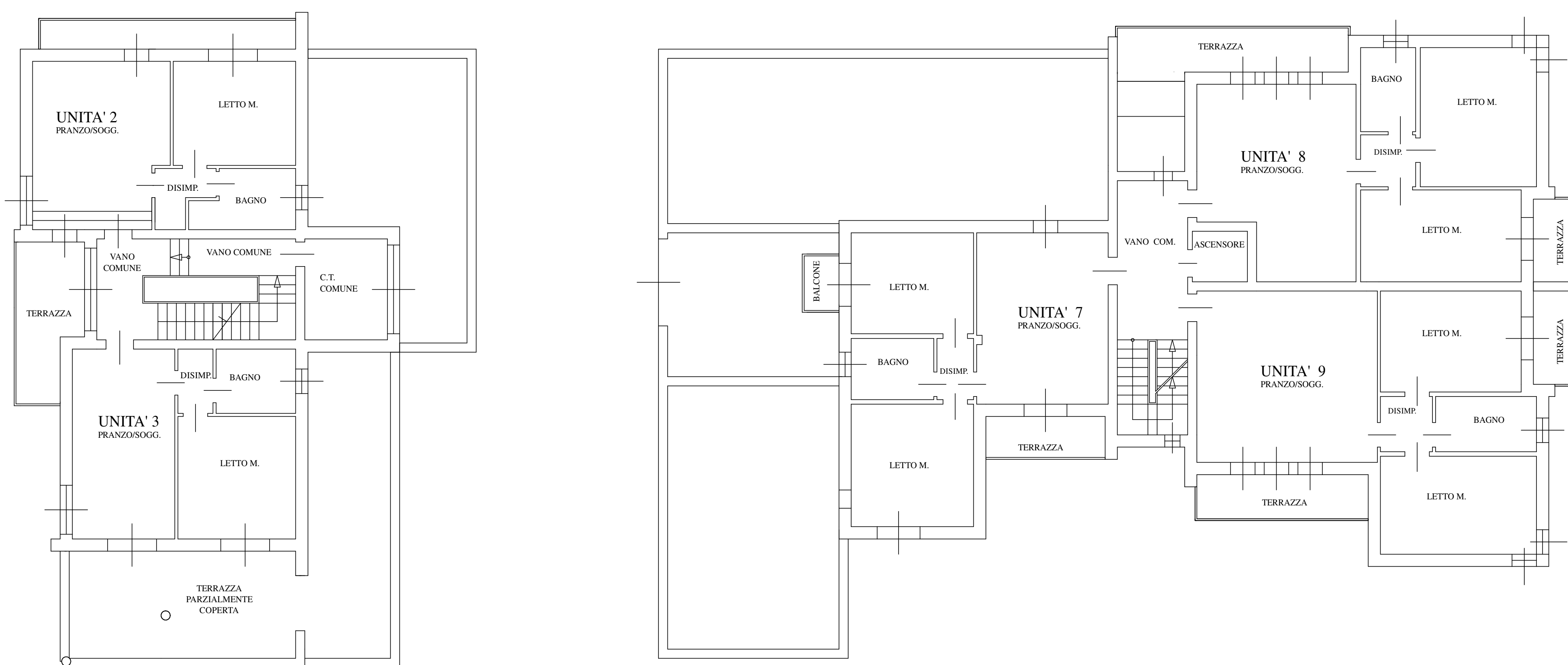
PIANTA PIANO TERRA



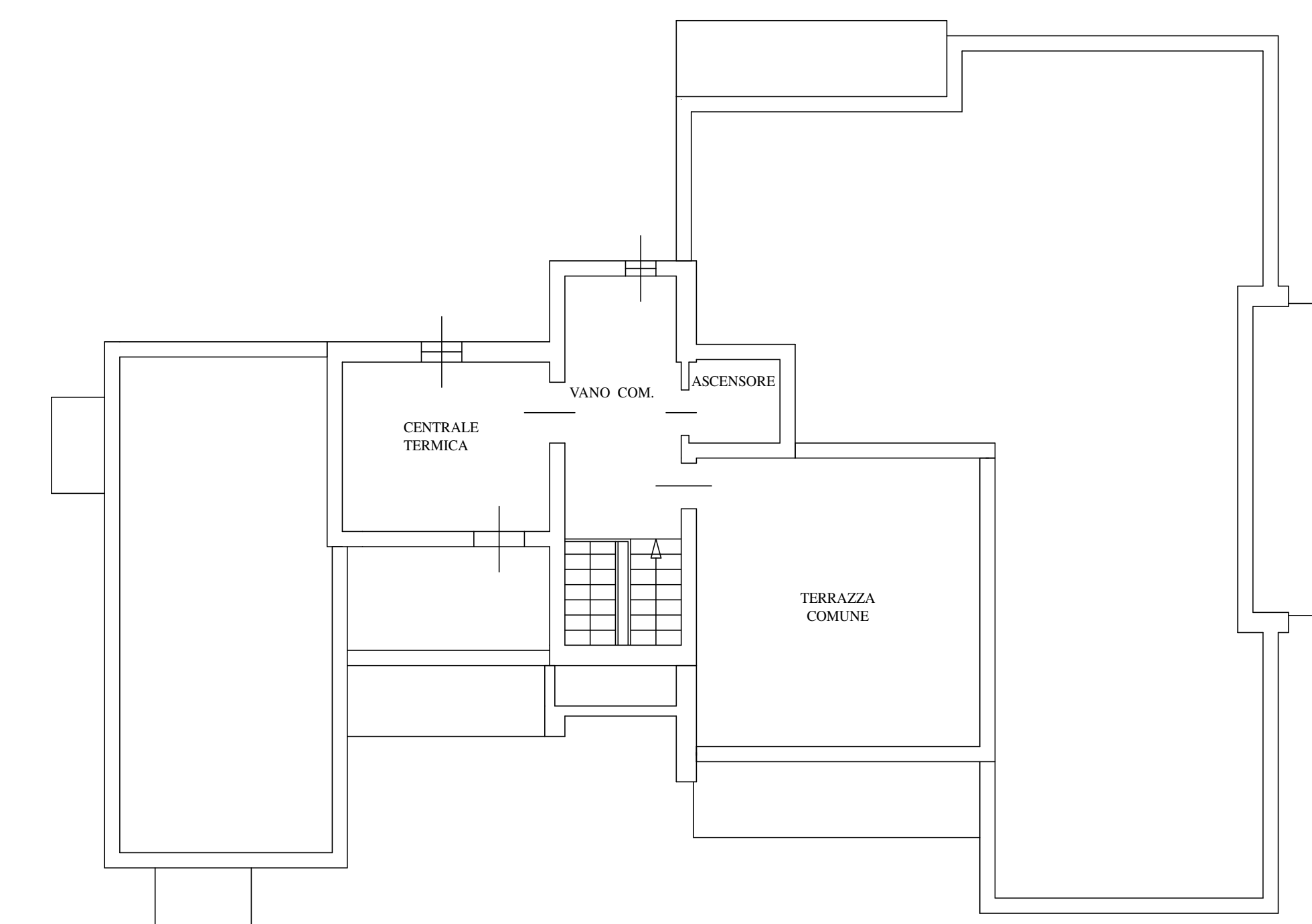
PIANTA PIANO SECONDO



PIANTA PIANO PRIMO



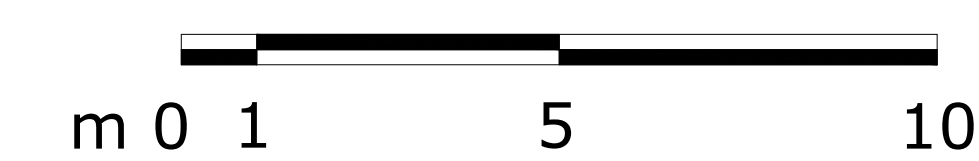
PIANTA PIANO TERZO



**TRIBUNALE DI MANTOVA**  
**Esecuzione Immobiliare N. 172/2023**

**RAPPRESENTAZIONE GRAFICA DEI FABBRICATI**  
**IN CORSO DI COSTRUZIONE**

SITI IN BORGO VIRGILIO (MN)  
 VIA T. TASSO E VIA T. FOLENGO, civici mancanti  
 N.C.E.U. Sez. B, Fg. 6 Mapp. nn. 399 e 661



SCALA 1:100

*Geom. Guido Andrea Zanini*

Via P. Mat tardia 17 - 46029 Suzzara ( MN )  
 C.f. ZNN GND 68L31 E8971 - P.IVA 02227670201  
 Tel. 380 4796918 - E-mail: guidoandrezanini@alice.it