

Foto 3: piano T, dal lastrico sovrastante il piano S1 verso il bene A al centro, a sx le strutture di arrivo della seggiovia, in secondo piano la Basilica di S.Ubaldo

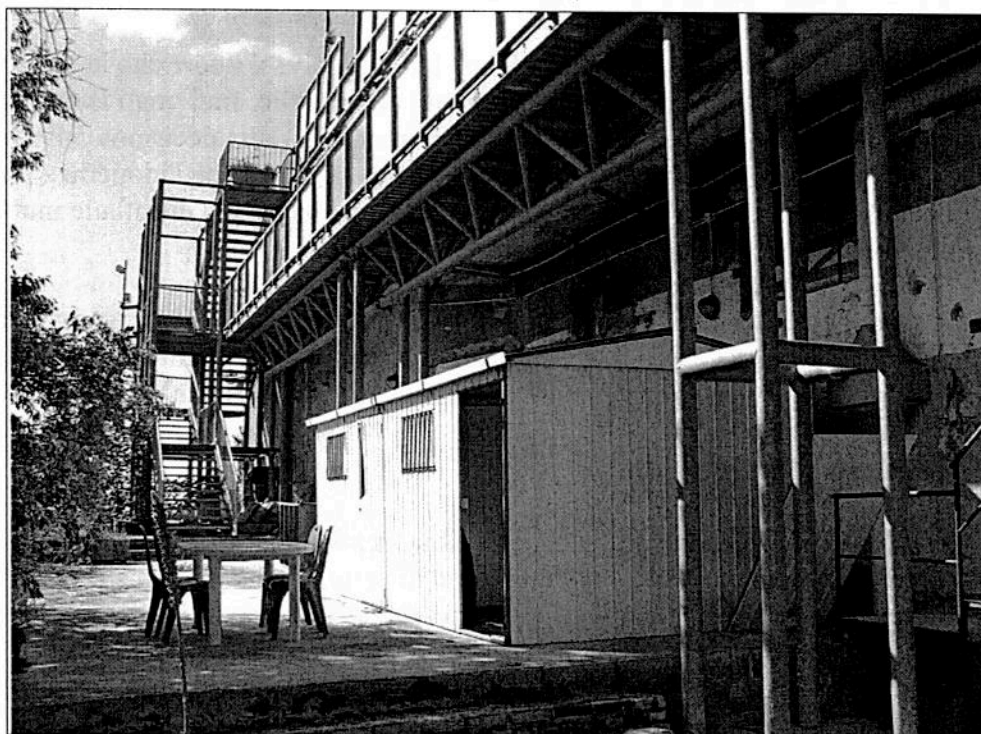


Foto 4: scala esterna metallica di collegamento del piazzale al piano T con terrazza lato Est del bene B2 e con la corte al piano S3, da Nord verso Sud.

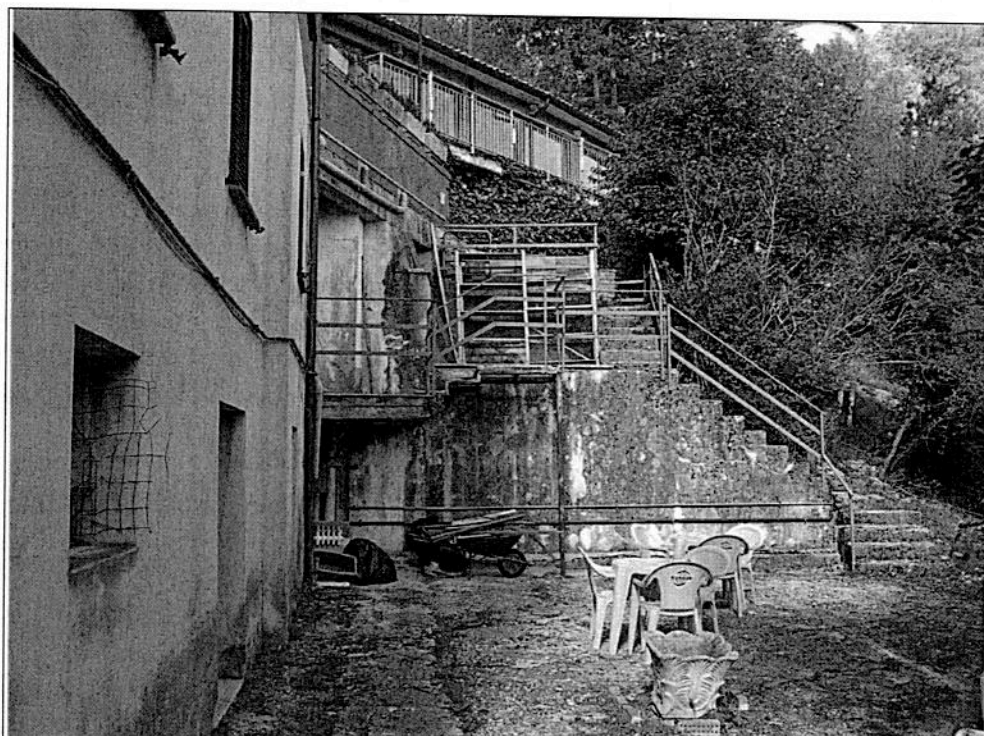


Foto 5: rampe di scale esterne colleganti la corte nel piano S3 ai piani superiori



Foto 6: bene A, piano T, interno verso Sud



Foto 7: tensostruttura rimovibile con accesso dal piazzale e dal bene A

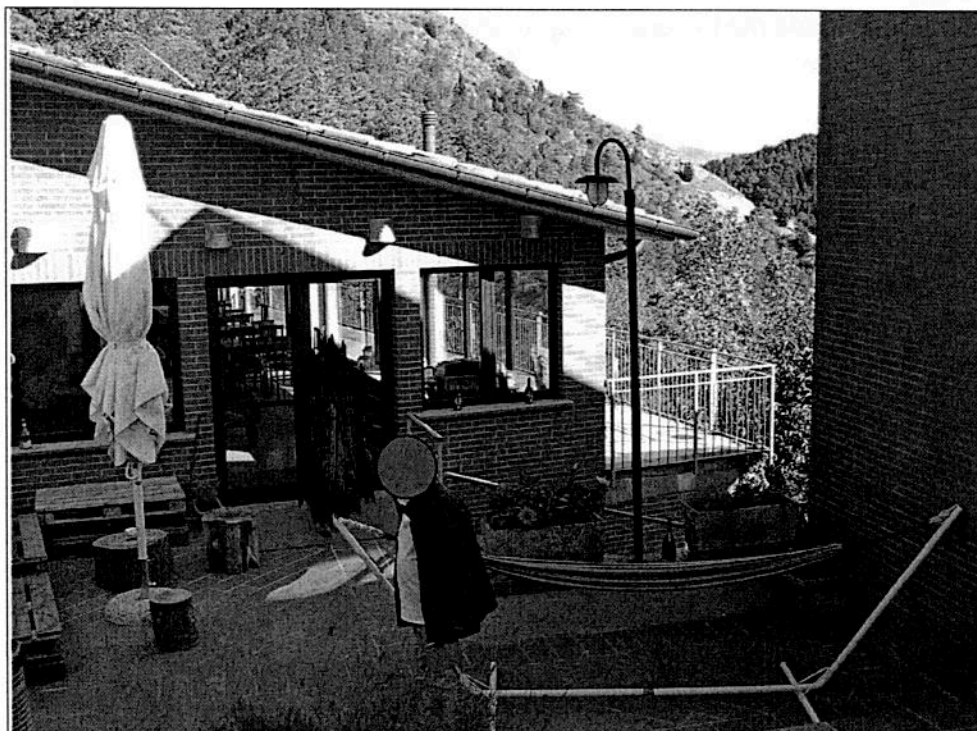


Foto 8: dal piazzale verso bene B1, scale a destra verso bene B2



Foto 9: da piano T, bene B1, verso ingresso bene B2 al piano S1



Foto 10: piano T, bene B1, da Nord verso Sud



Foto 11: piano T, bene B1, da interno verso terrazza panoramica, da Ovest verso Est.

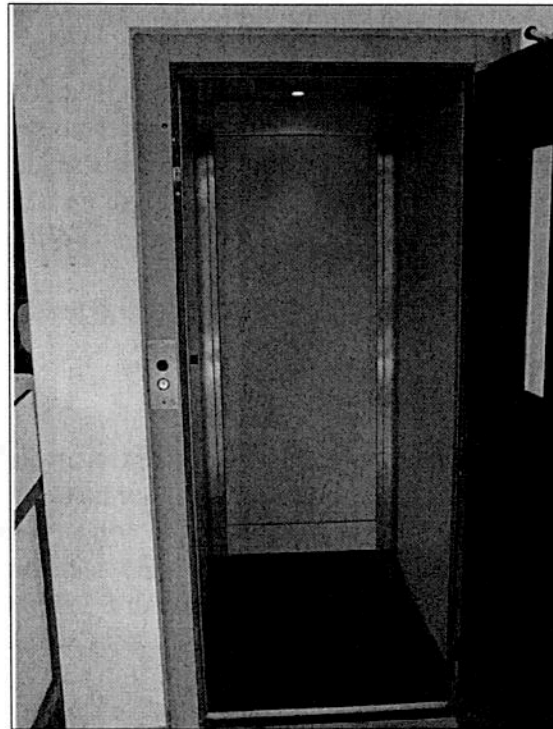


Foto 12: piano T, bene B1, montacarichi collegante bene B1 con bene B3 nel piano S1



Foto 13: piano S1, bene B2, sala ristorante, da Nord verso Sud

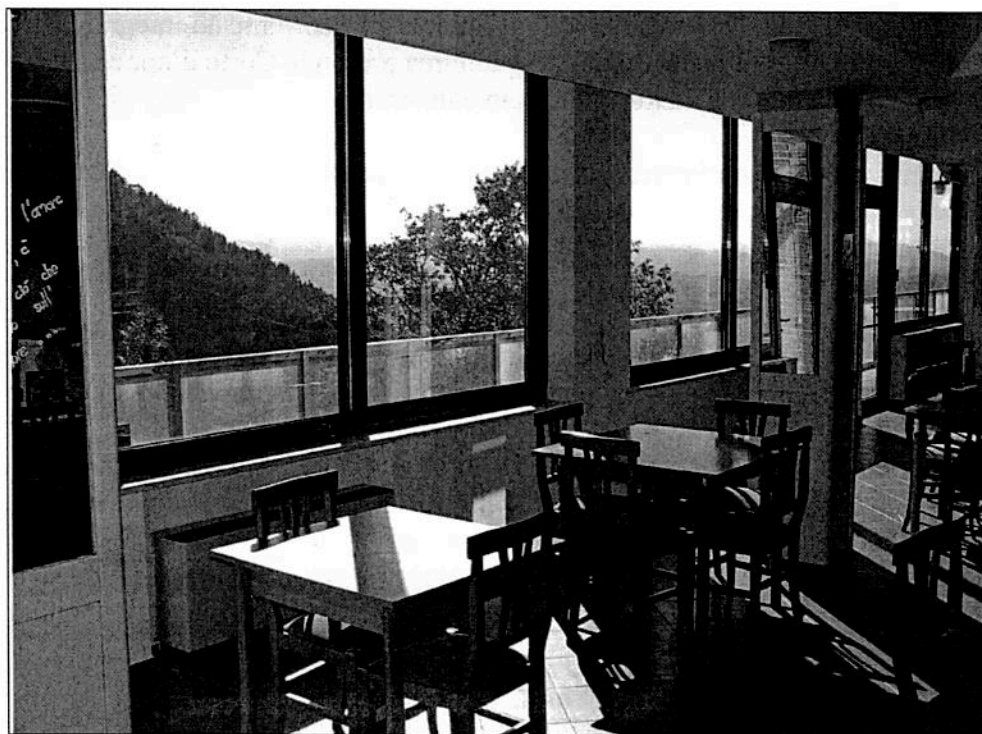


Foto 14: piano S1, bene B2, da sala ristorante verso terrazza lato Ovest



Foto 15: piano S1, bene B2, da sala ristorante verso terrazza lato Sud

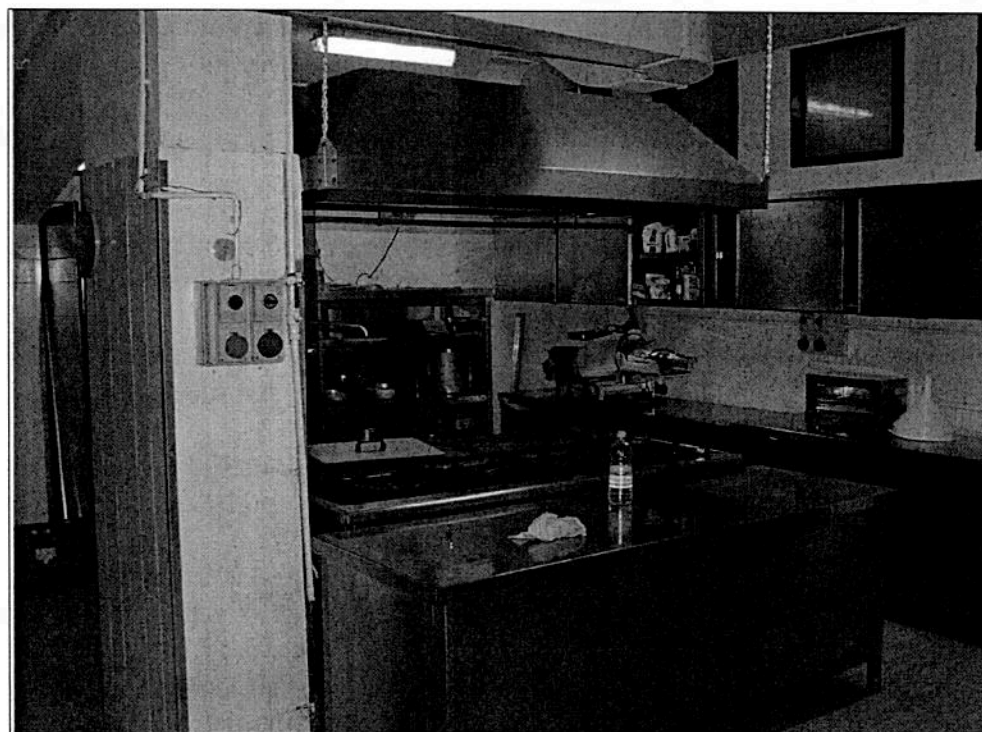


Foto 16: piano S1, bene B2, cucina

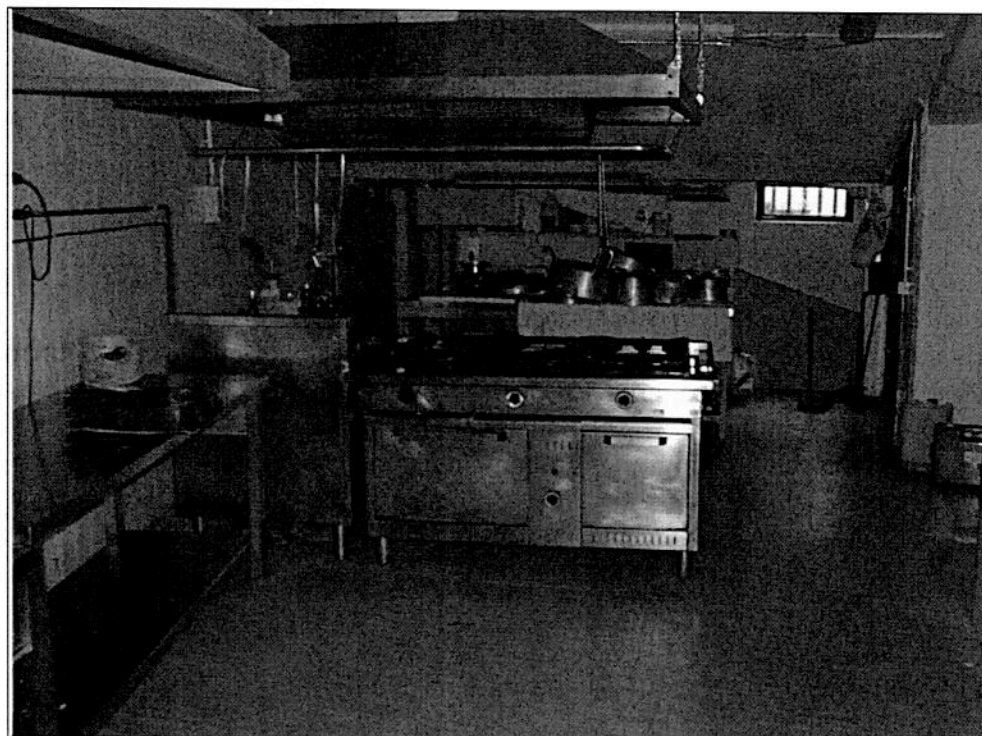


Foto 17: piano S1, bene B2, cucina

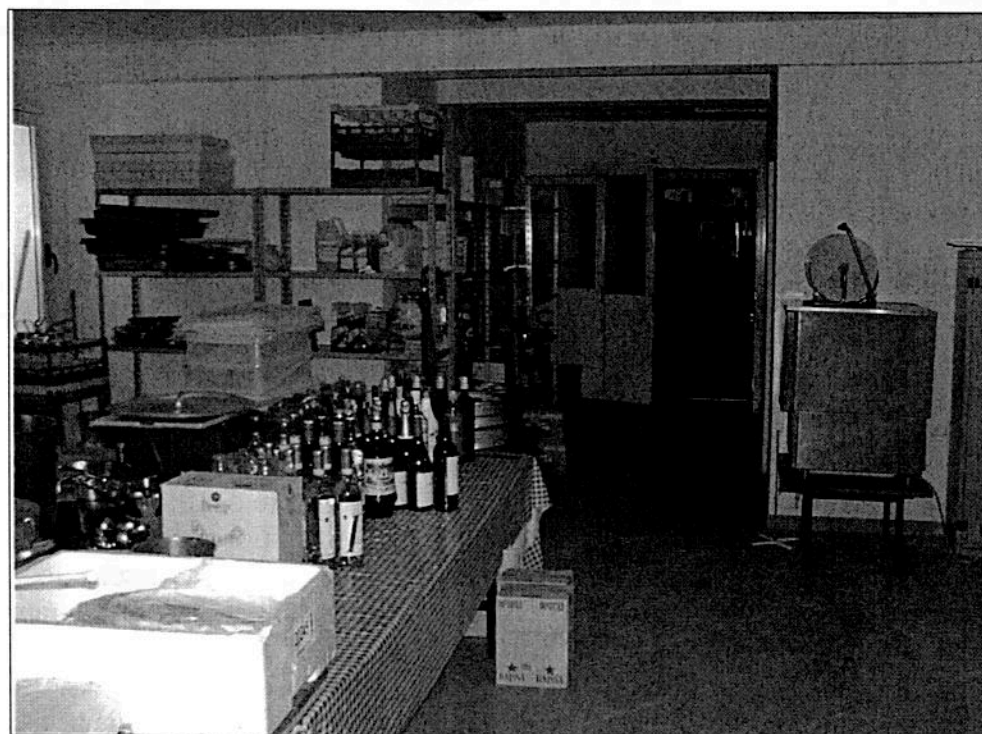


Foto 18: piano S1, bene B3, dispensa



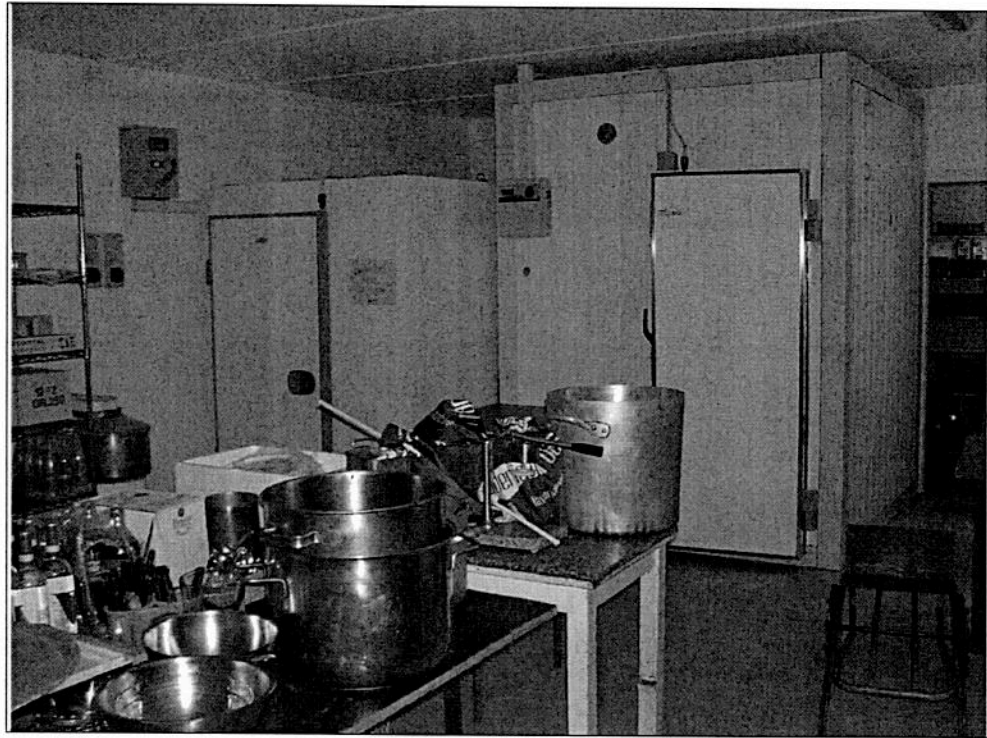


Foto 19: piano S1, bene S3, dispensa, celle frigorifere



Foto 20: piano S1, bene B3, dispensa, montacarichi collegato al piano T, bene B1

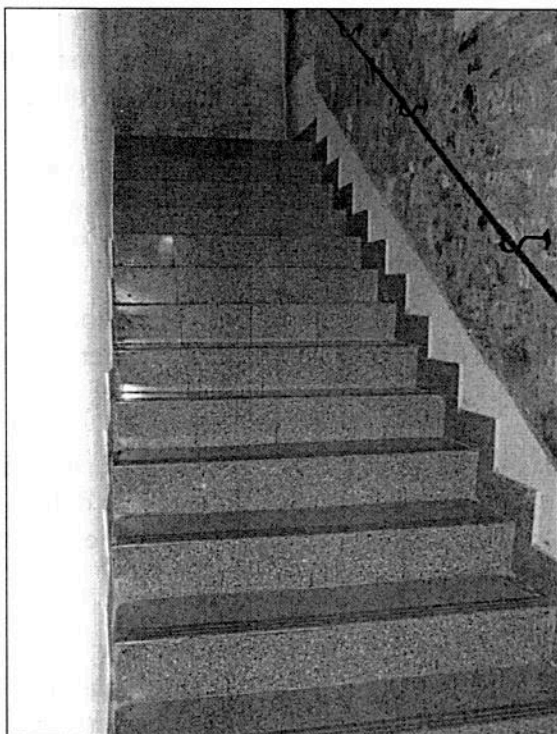


Foto 21: da piano S1 a piano S2,  
da bene B2 a bene B4



Foto 22: piano S2, bene B4, w.c.



Foto 23: piano S2, bene B4, w.c.



Foto 24: piano S2, bene B4, w.c.

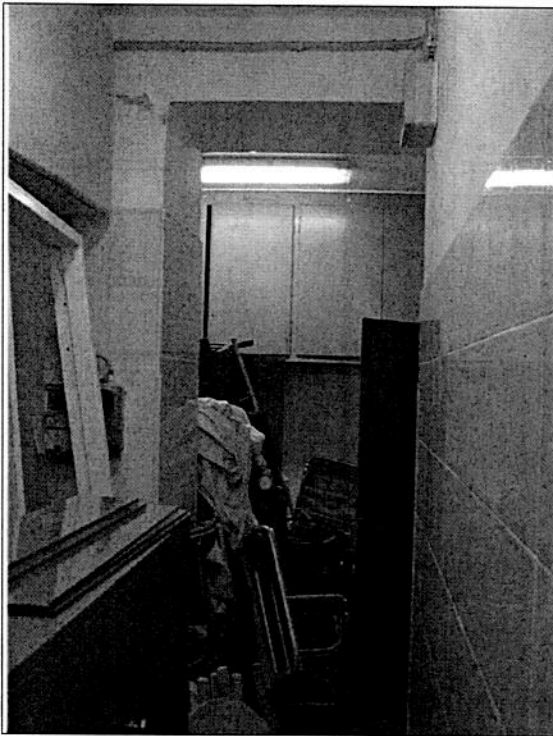


Foto 25: piano S2, bene B4, magazzino in comunicazione con corridoio w.c.

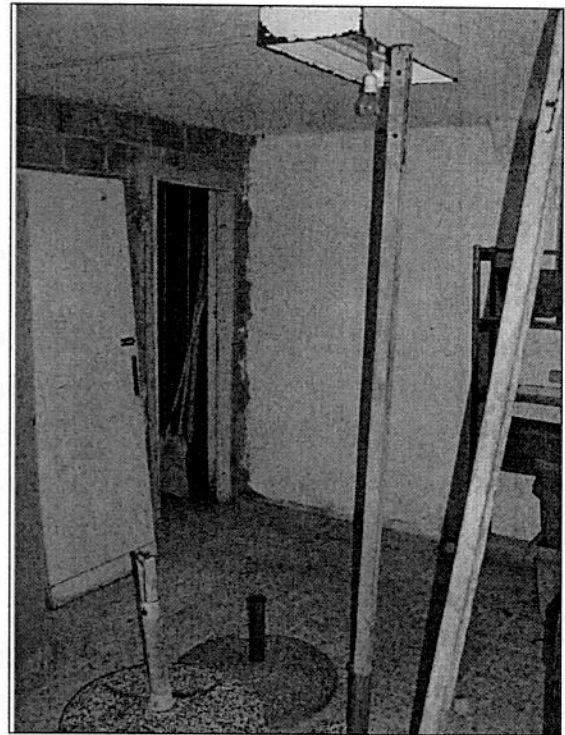


Foto 26: piano S3, bene B5, magazzini



Foto 27: facciata Nord Est, in basso beni B5 con accesso dall' esterno (corte)

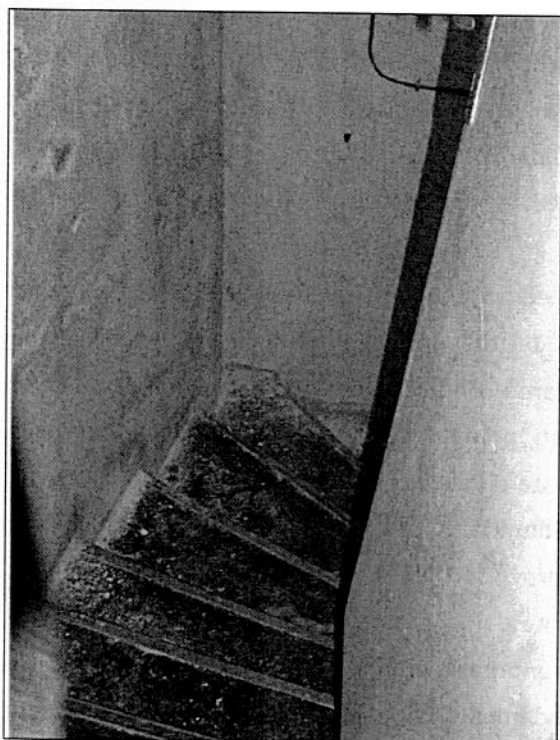


Foto 28: scale da pianerottolo nel piano S2 bene C, verso bene piano S3 bene B5

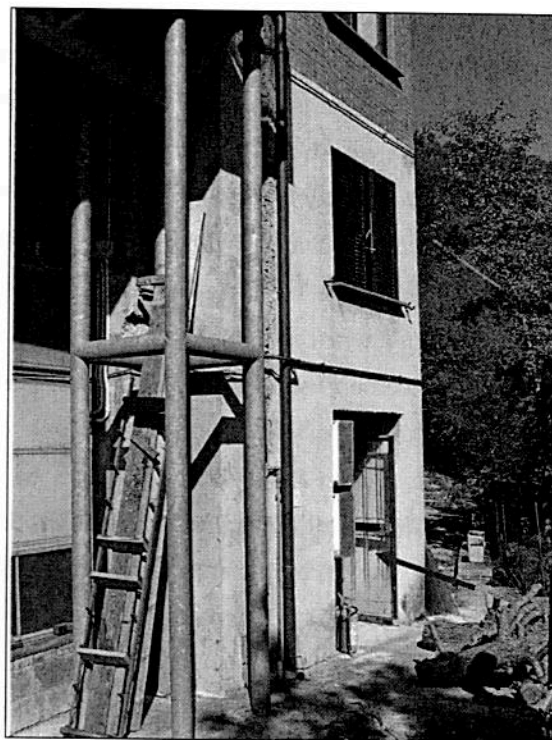


Foto 29:, da corte al piano S3 verso ingresso al bene B5

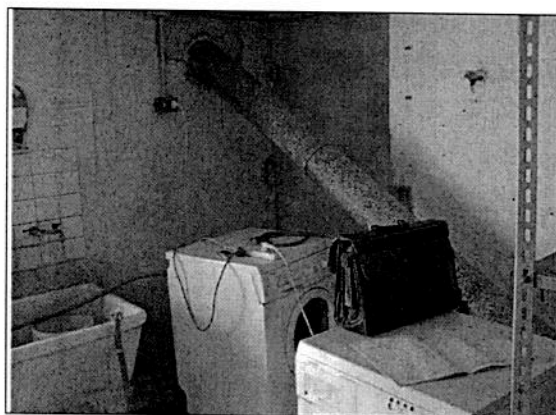


Foto 30: piano S3, bene B5, magazzino

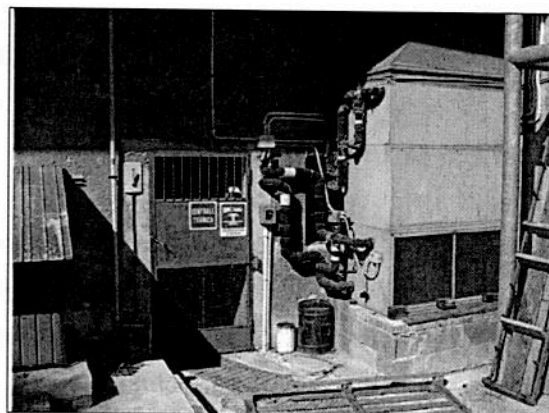


Foto 31: piano S3, bene B5, C.T.

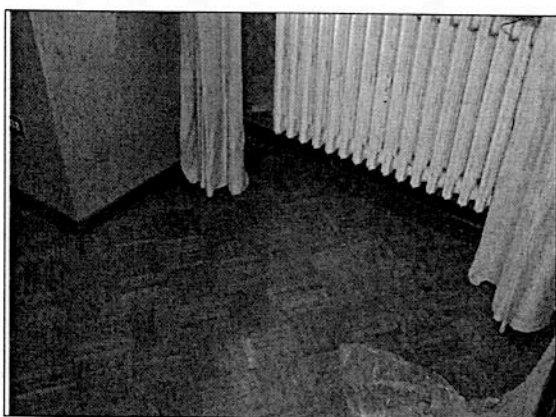


Foto 31: piano S2, bene C, pavimento

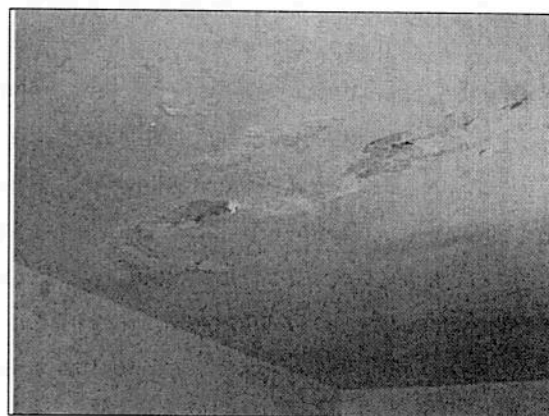


Foto 32: piano S2, bene C ammaloramento dell' intonaco

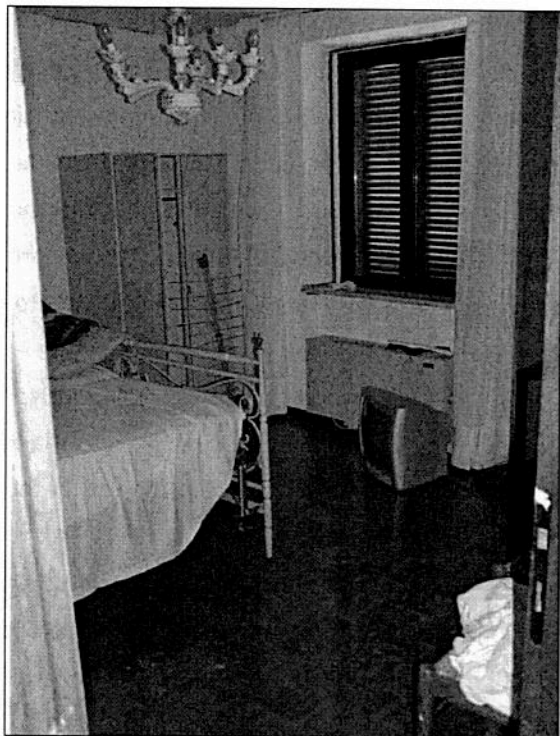


Foto 33: piano S2, bene C  
camera con esposizione Nord Est

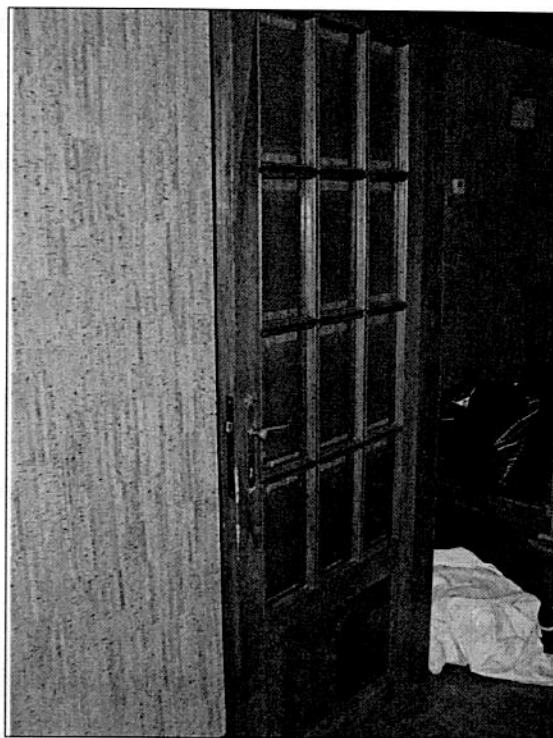


Foto 34: piano S2, bene C  
porta interna



Foto 35: piano S2, bene C  
bagno

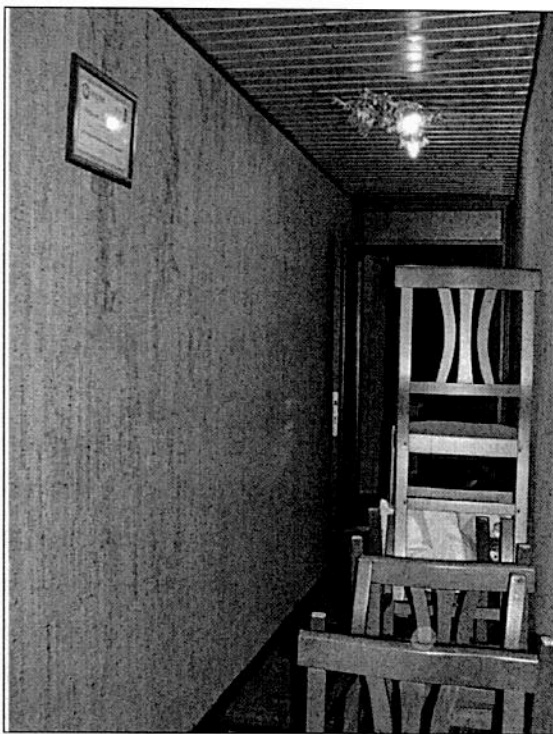


Foto 36: piano S2, bene C  
corridoio di ingresso

*Segue allegati*