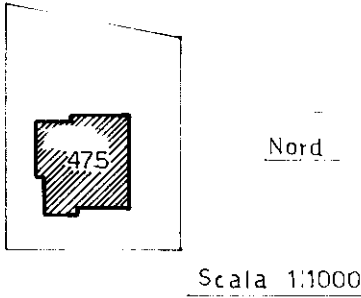


UFFICIO TECNICO ERARIALE ASCOLI PICENO	COMUNE DI COLONELLA	ELABORATO PLANIMETRICO	
	FOGLIO 15 ALL. -	SCALA 1:500	PAG. 1
N.O.E.U. PARTITA N. =	PARTICELLA - 475		



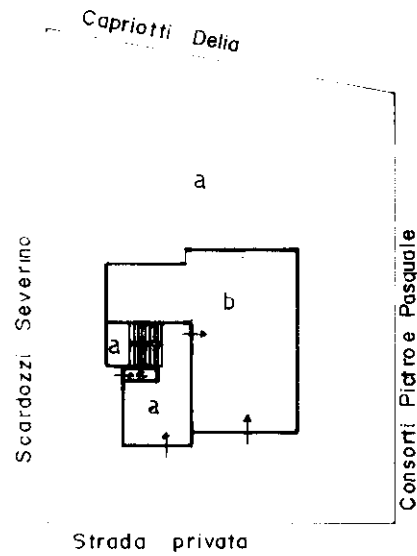
**Leggenda**

Pila 473-475

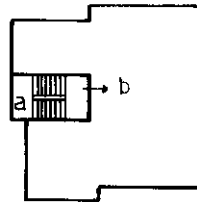
sub a) BENE COMUNE NON CENSIBILE  
(Corte, ingresso, locale caldaia, androne  
scala)

**A** b) APP TO (P1°) e Ripostiglio (P.T.)

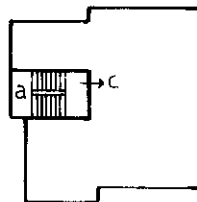
**B** c) APP TO (P2°)



Pianta Piano Terra e corte



Pianta Piano Primo (1°)



Pianta Piano Secondo (2°)

Monteprandone

IL TECNICO

Ultima planimetria in atti