

STUDIO TECNICO *GP Project*

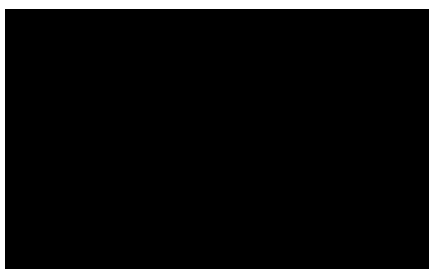
ING. GIANLUCA PICCIAU

Via Giovanni Gronchi n°1

09044 QUARTUCCIU (CA)

TRIBUNALE CIVILE DI CAGLIARI

ESPROPRIAZIONE IMMOBILIARE (CARTABIA)

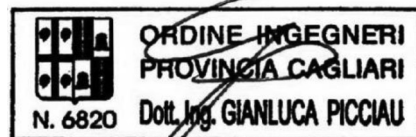


R.G.E. 290/2023

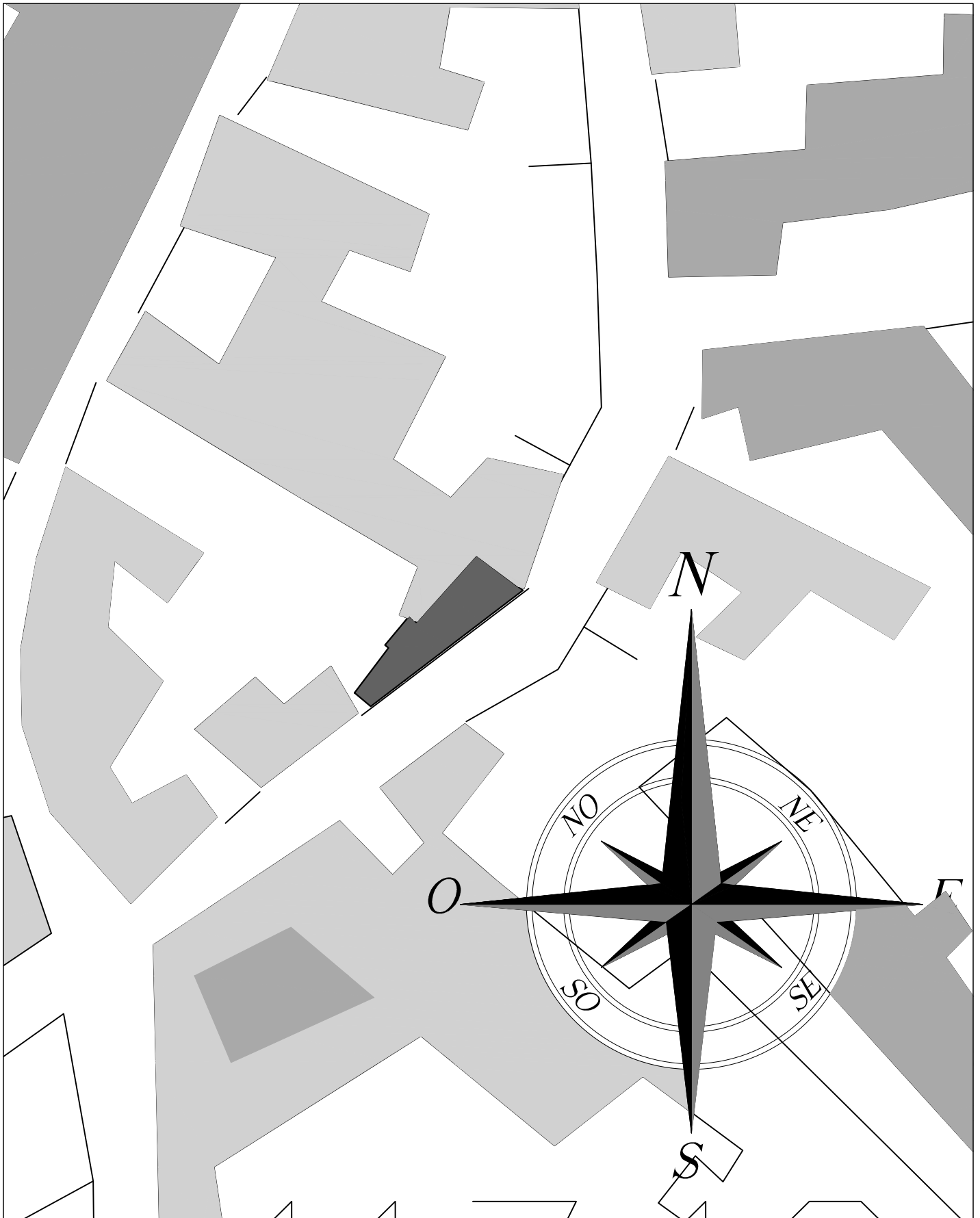
PLANIMETRIE DI CONSULENZA

GIUDICE: Dott.ssa Silvia Cocco

Il Consulente Tecnico d'Ufficio
Dott. Ing. Gianluca Picciau



INQUADRAMENTO DEL LOTTO NEL C.T.R. 546080



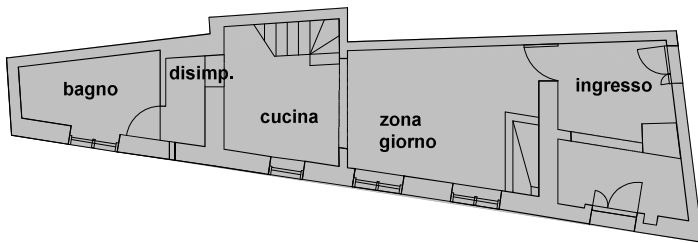
SCALA 1 A 500

Il CTU Ing. Gianluca Picciau



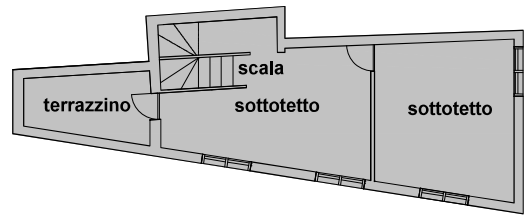
Planimetria immobile via Carducci n°73 - Guspini

Pianta piano terra: H = m.2,80

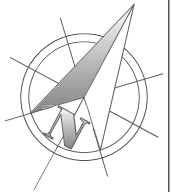
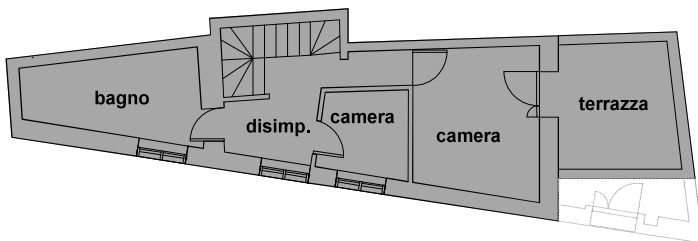


SUP. LORDA PIANO TERRA: mq.73
SUP. COMMERCIALE PIANO TERRA: mq.73
SUP. COMMERCIALE PIANO PRIMO:
mq.49,3 + mq.3,9 (30% di mq.13 TERRAZZA)
SUP. COMMERCIALE PIANO SOTTOTETTO:
35% di mq. 35 = mq. 12,25 + mq. 2,28 (30% di
mq.7,6 TERRAZZINO)
(H = m.2,25 - h = m.1,16)

Pianta piano secondo (sottotetto)
H, = m.2,25 h; = m. 1,16



Pianta piano primo: H = m.2,70



Scala 1:100

Il CTU Ing. Gianluca Picciau

