

# ALLEGATO 12

*Rilievi fotografici*





*fig. 1 – Prospetto su via Enrico Toti*



*fig. 2 – Portone di ingresso*





*fig. 3 –Prospetto via S. Eligio*

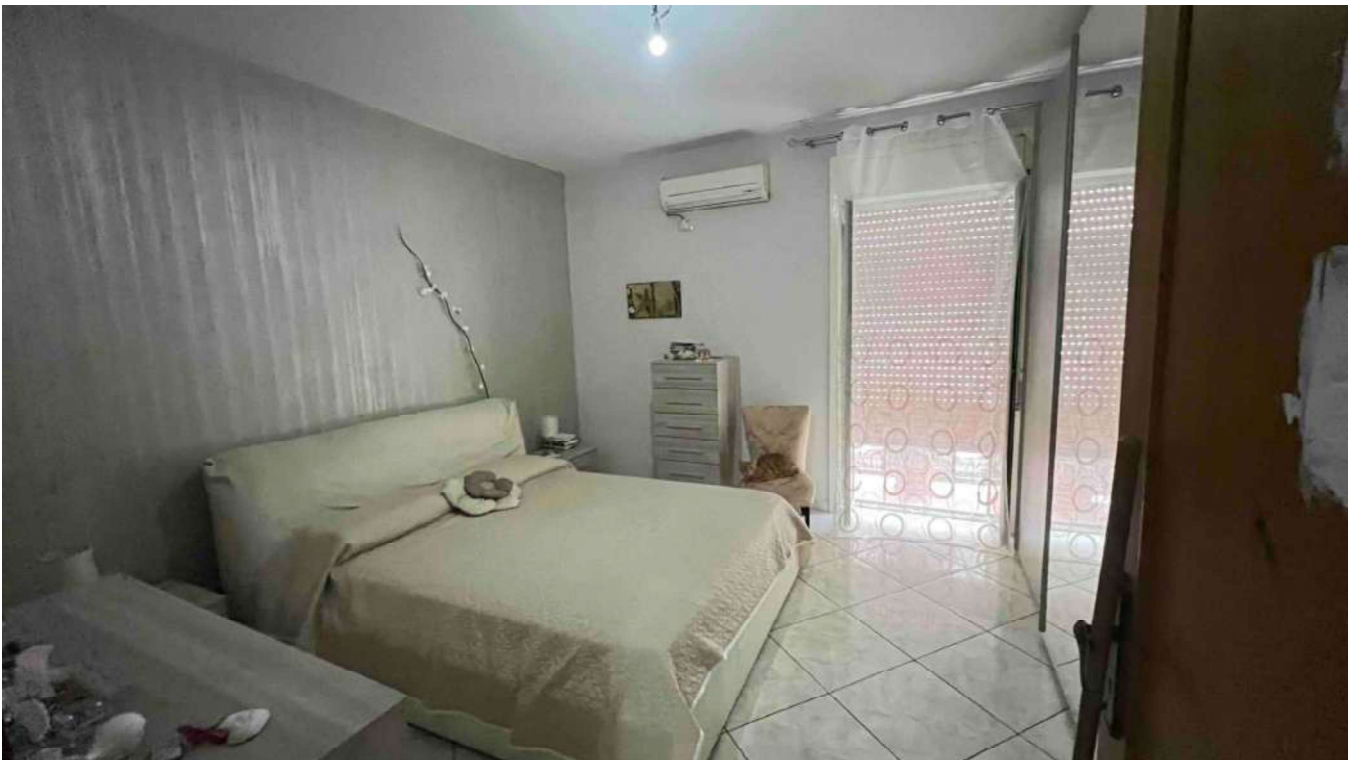


*fig.4 – Immobile oggetto della procedura (prospetto giallo)*





*fig. 5 – Piano 2 - Cucina*



*fig. 6 – Piano 2 - Camera 1*



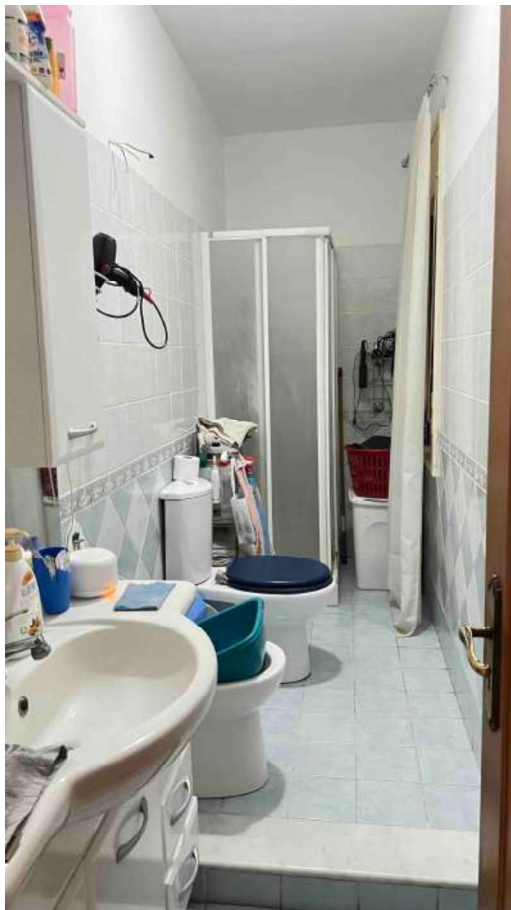


*fig.7 – Piano 2 - Camera 2*



*fig. 8 – Piano 2 - Camera 3*



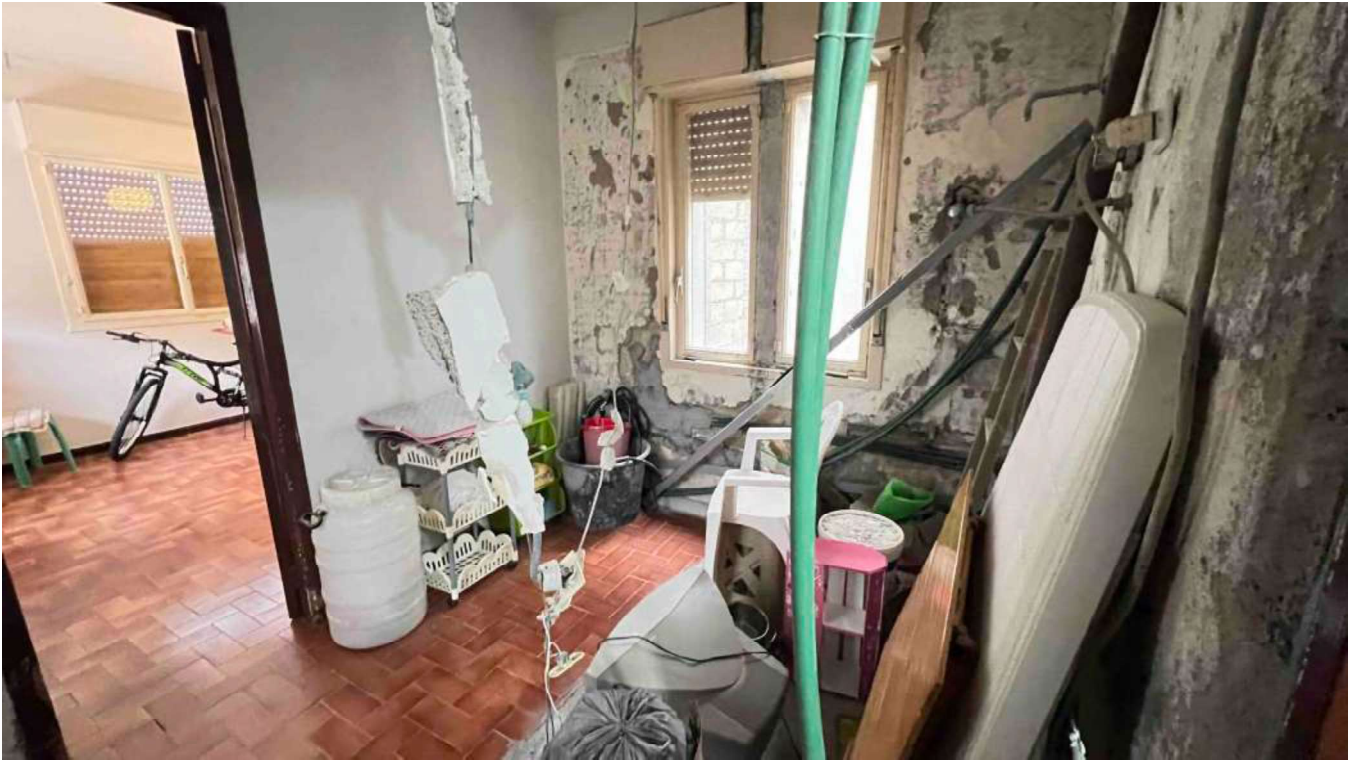


*fig. 9 – Piano 2 - Bagno*



*fig.10 – Piano 2 - Ripostiglio*



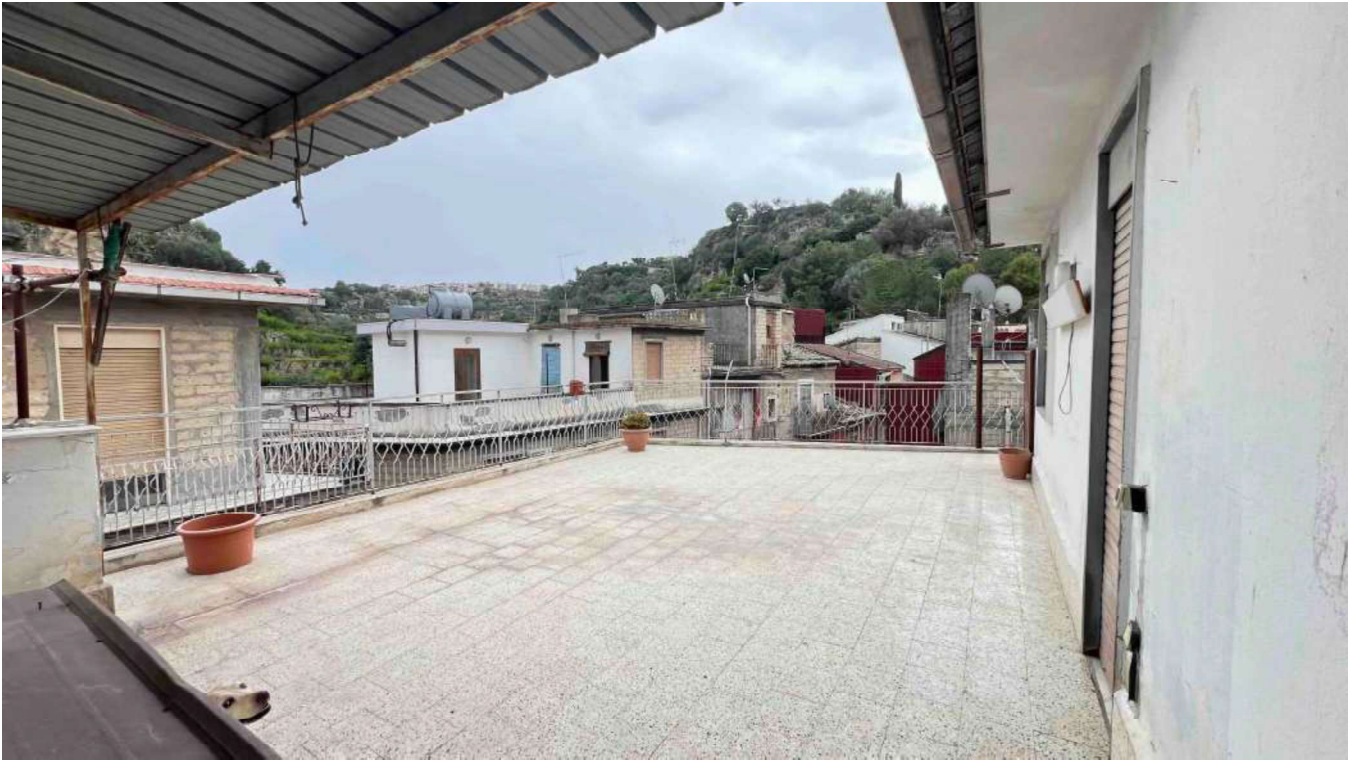


*fig. 11 – Piano 3 – Locale di sgombero 1*



*fig.12 – Piano 3 – Locale di sgombero 2*





*fig. 13 – Piano 3 – Terrazza*



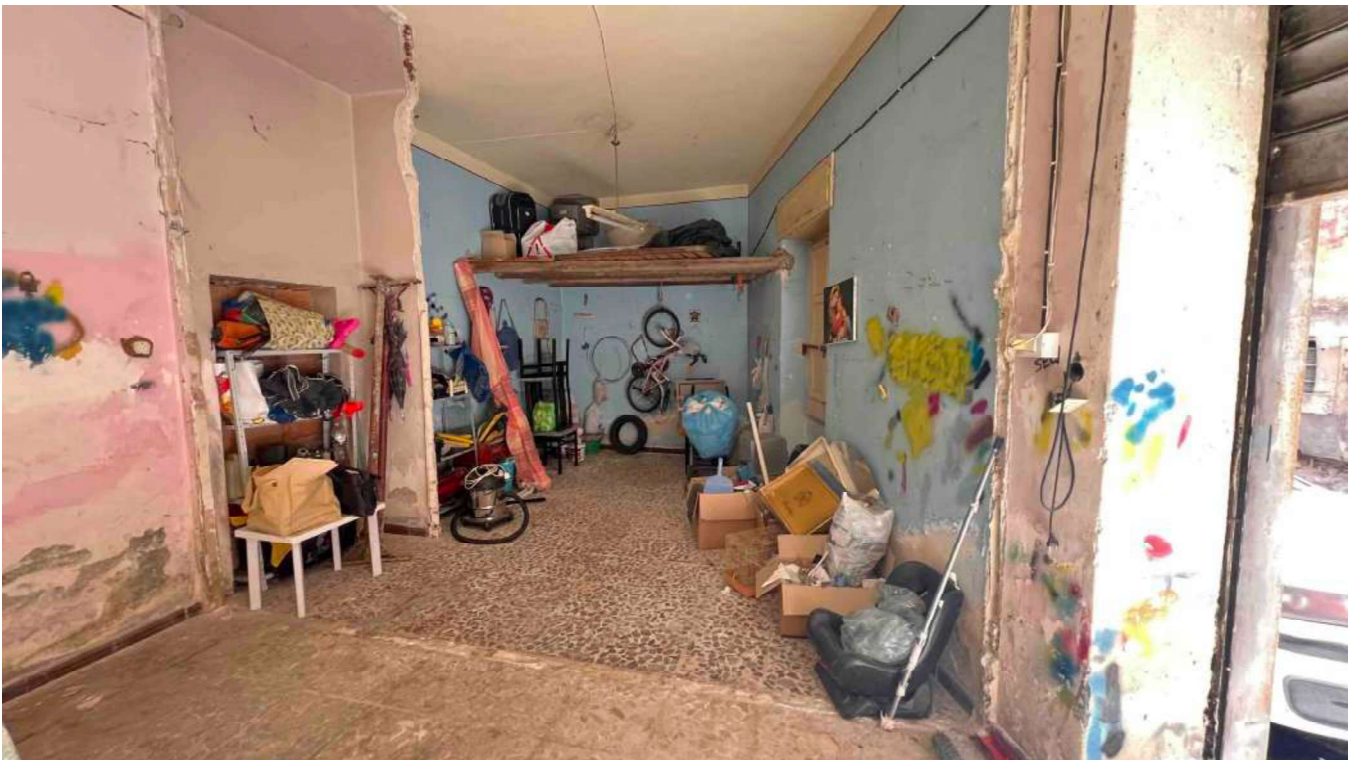
*fig.14 – Ingresso garage*







*fig. 15 – garage vista 1*



*fig.16 – garage vista 2*

