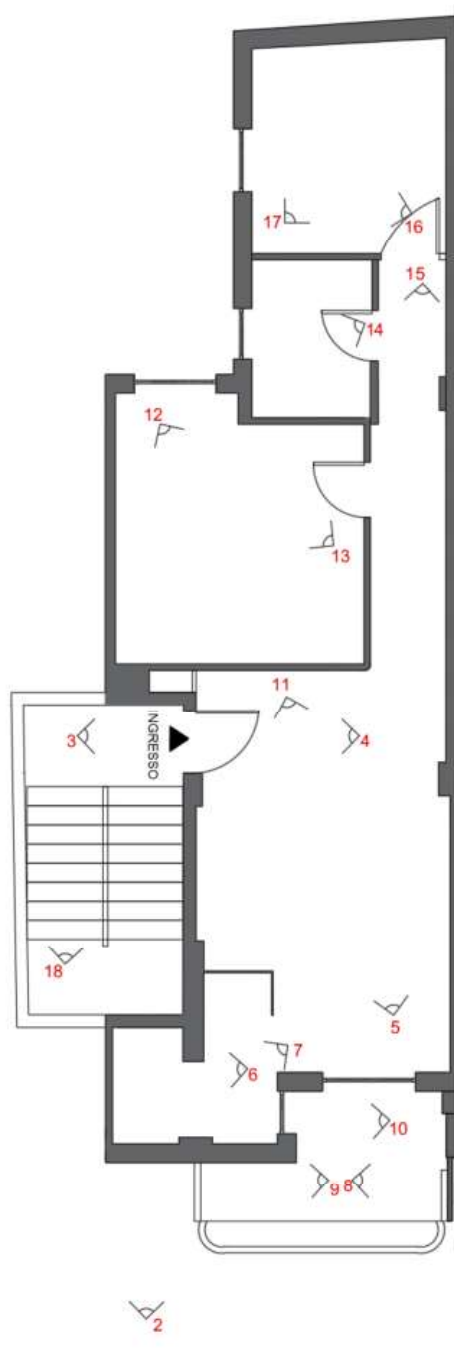




ING. MIRIAM GRASSI

LOTTO UNICO

- Foglio 31 part. 9460 sub 18
APPARTAMENTO 2° PIANO



Via Calle del Porto, Torre B – 71043 Manfredonia(FG)

p.iva: 03960270712 - cell:3386804930 - mail: miriamgrassi@live.it - pec: miriam.grassi@ingpec.eu

Ing. Miriam Grassi





ING. MIRIAM GRASSI



1.



2.



3.



4.

Via Calle del Porto, Torre B – 71043 Manfredonia(FG)

p.iva: 03960270712 - cell:3386804930 - mail: miriamgrassi@live.it - pec: miriam.grassi@ingpec.eu

Ing. Miriam Grassi





ING. MIRIAM GRASSI



5.



6.



7.



Via Calle del Porto, Torre B – 71043 Manfredonia(FG)

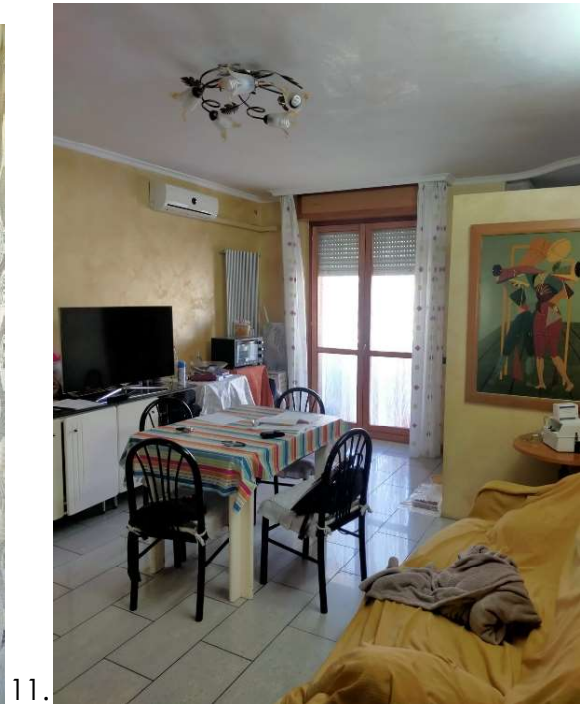
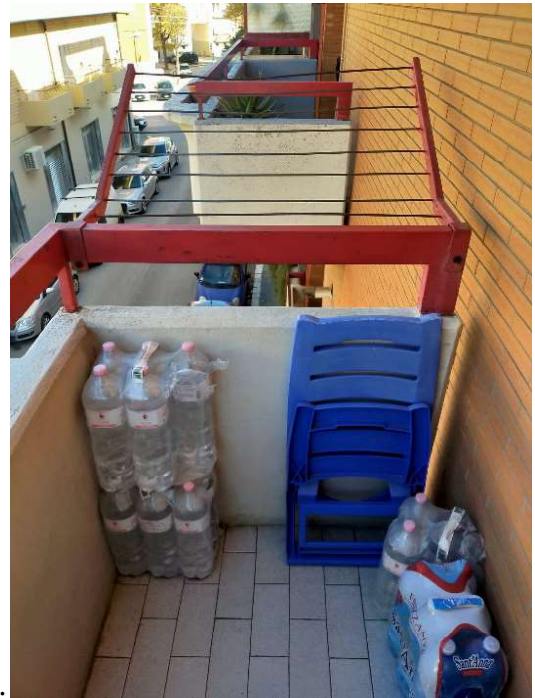
p.iva: 03960270712 - cell:3386804930 - mail: miriamgrassi@live.it - pec: miriam.grassi@ingpec.eu

Ing. Miriam Grassi





ING. MIRIAM GRASSI



Via Calle del Porto, Torre B – 71043 Manfredonia(FG)

p.iva: 03960270712 - cell:3386804930 - mail: miriamgrassi@live.it - pec: miriam.grassi@ingpec.eu

Ing. Miriam Grassi

Firmato Da: GRASSI MIRIAM Emesso Da: ARUBAPEC S.P.A. NG CA 3 Serial#: 6c47d491165237ceb53feead9435764a





ING. MIRIAM GRASSI



18.



19.



20.



21.

Via Calle del Porto, Torre B – 71043 Manfredonia(FG)

p.iva: 03960270712 - cell:3386804930 - mail: miriamgrassi@live.it - pec: miriam.grassi@ingpec.eu

Ing. Miriam Grassi

