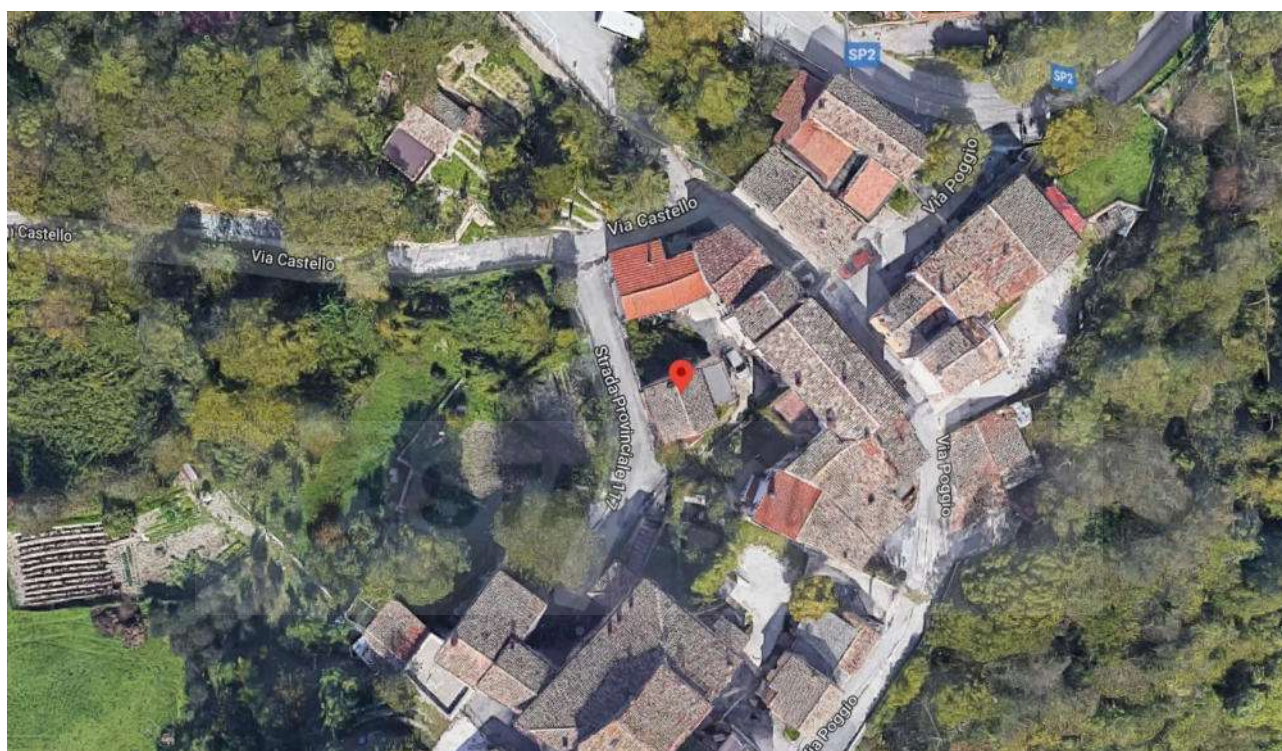


# DOCUMENTAZIONE FOTOGRAFICA

Comune di MONTE GRIMANO TERME



























ASTAlegale.net














 **ASTA** *legale.net*




ASTAlegale.net





A photograph of a staircase with a watermark. The staircase is made of dark wood and leads upwards. A bright light source from the left creates a strong vertical beam of light on the wall. A handrail is visible on the right side. A watermark is overlaid on the image, consisting of a red square icon with a white 'A' and the text 'ASTAlegale.net' in a serif font.

 **ASTA** *legale.net*













ASTALEGALE.NET





ASTAlegale.net









ATAlegale.net








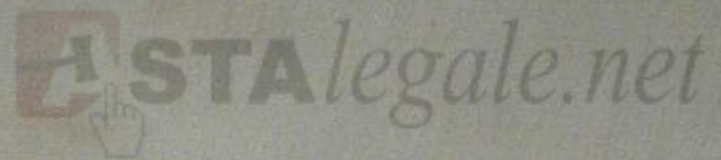
 **ASTA** *legale.net*



 **ASTA**legale.net



A hand is pointing towards a logo on a wall. The logo consists of a red square with a white 'A' and a hand cursor icon, followed by the text 'ASTAlegale.net' in a serif font.

ASTAlegale.net





ASTALEGALE.net











 **ASTAlegale.net**

**DRUGAS** FORNITORE IMPIANTI  
ASSISTENZA TECNICA ESCLUSIVAMENTE  
CONDIZIONAMENTO  
Via del Popolo, 26 - 41013 Poggioreale (MO)  
Telefono 0549/997300

**IMMERSAS**



SOLID STATE MOTOR







Astalegale.net











