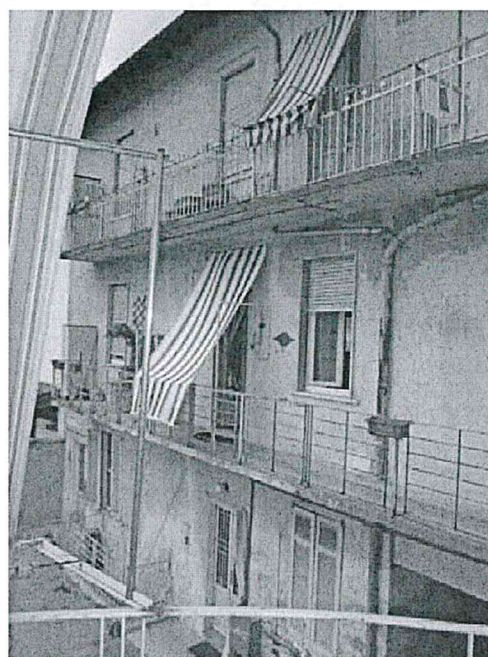
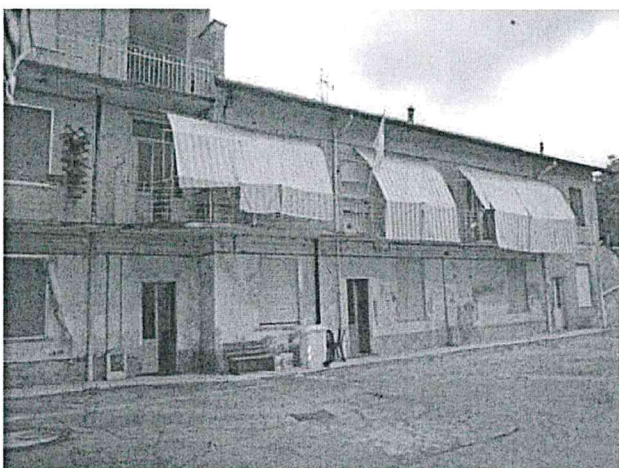
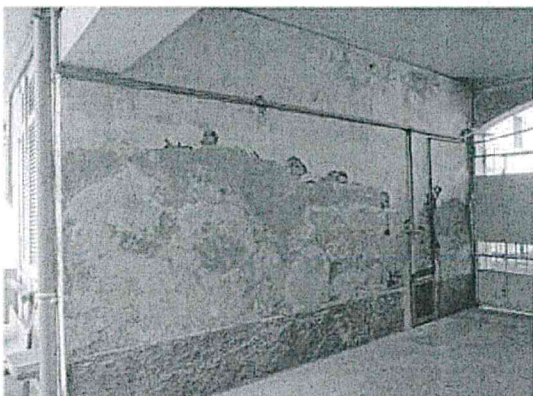


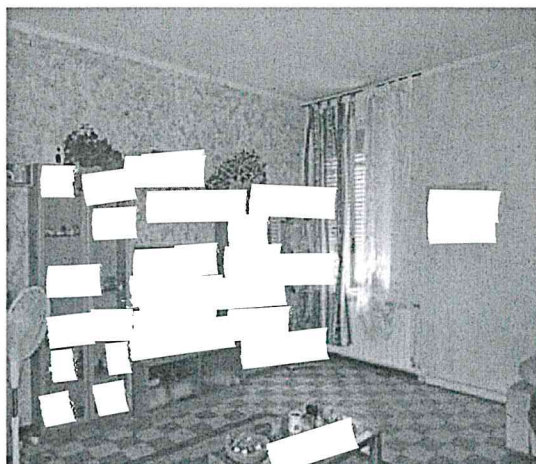
**RILIEVO FOTOGRAFICO LOTTO4, Via Garbiglia, 12 Vigevano PT/P1**





**unità Mapp. 3292 Sub.2 PT-P1-PS1**





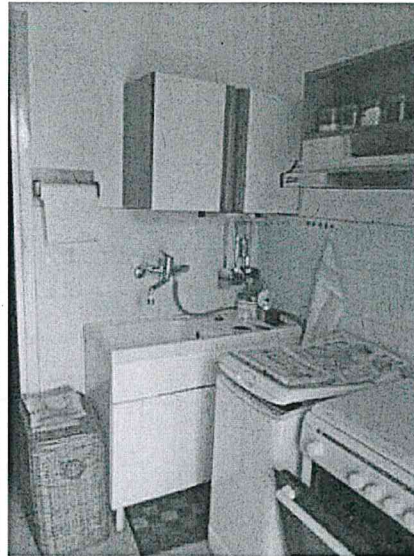
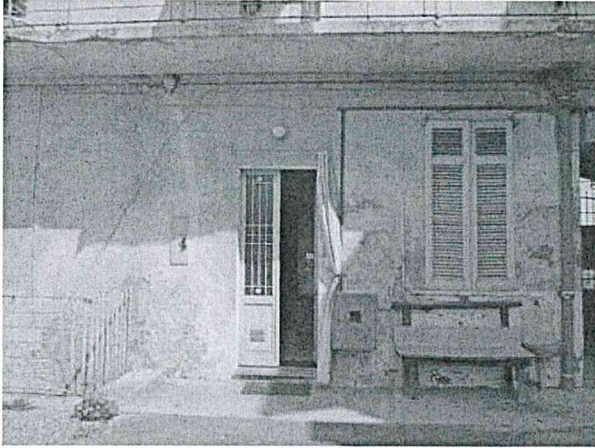


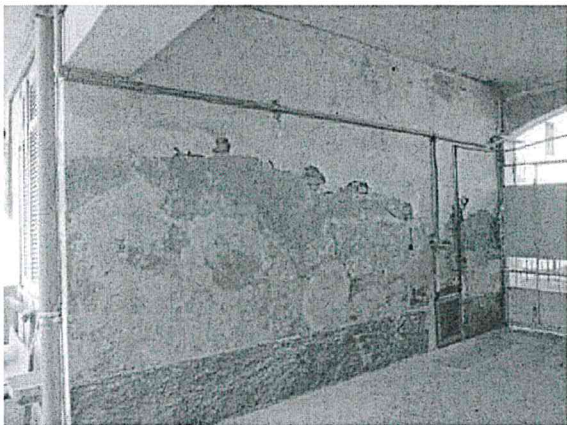
Stanza al piano terra  
**Unità Box Mapp. 3292 Sub.9 PT**



Locale ripostiglio

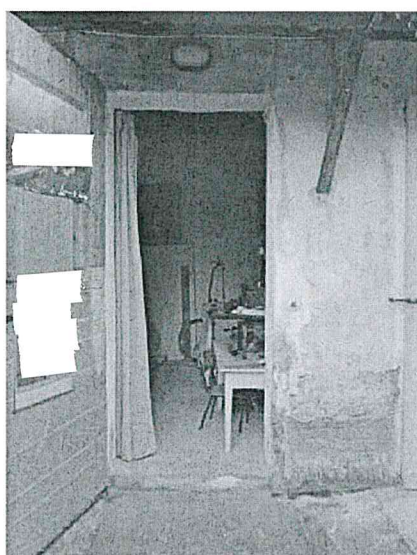
**Unità Mapp. 3292 Sub.3 PT**





**Unità Mapp. 3292 Sub.4 PT**





Lodi, 10.09.23

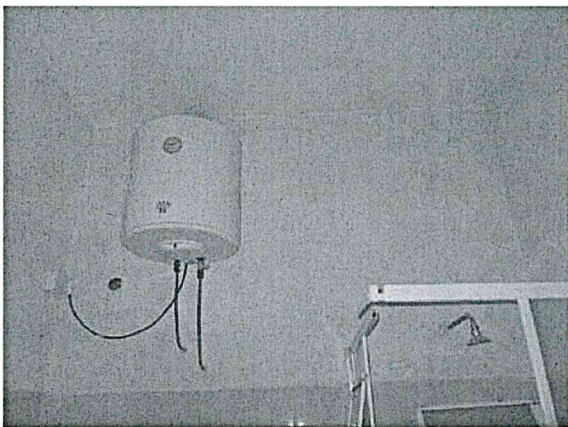
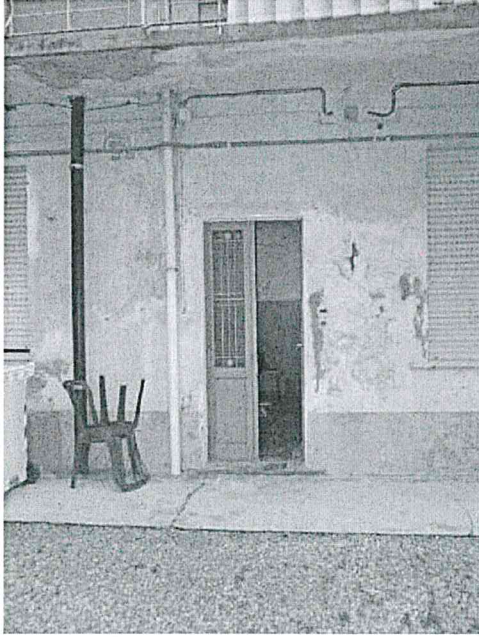
Il perito estimatore: Arch. Stefania Lucchini

*Stefania Lucchini*

A circular professional stamp. The outer ring contains the text "ORDINE DEGLI ARCHITETTI - LODI". The inner circle contains the text "STEFANIA LUCCHINI" and the number "254".

**RILIEVO FOTOGRAFICO LOTTO4 Via Garbiglia, 12 Vigevano**  
**PT/P1/P2**

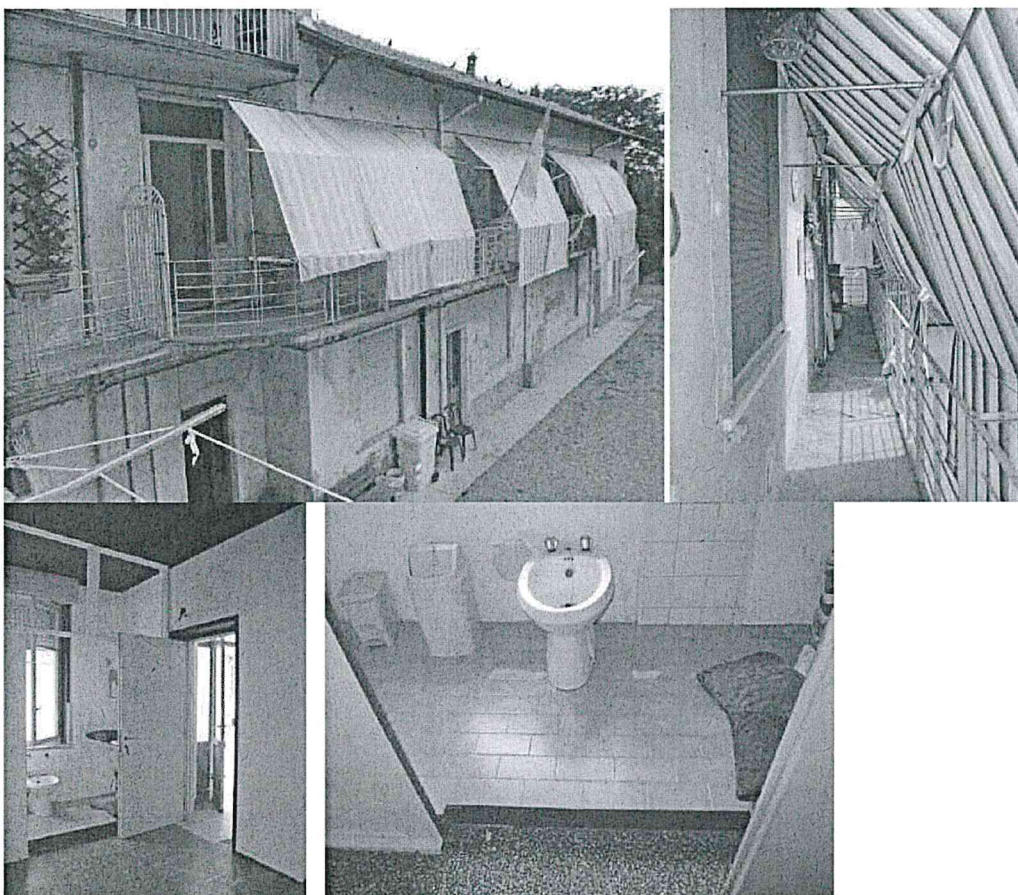
**Mappale 3292 sub.7**

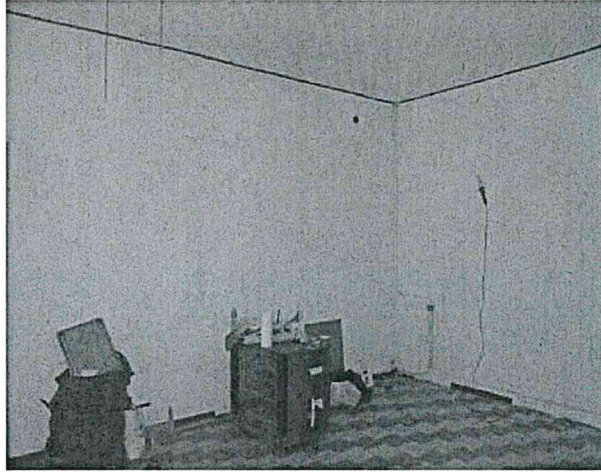
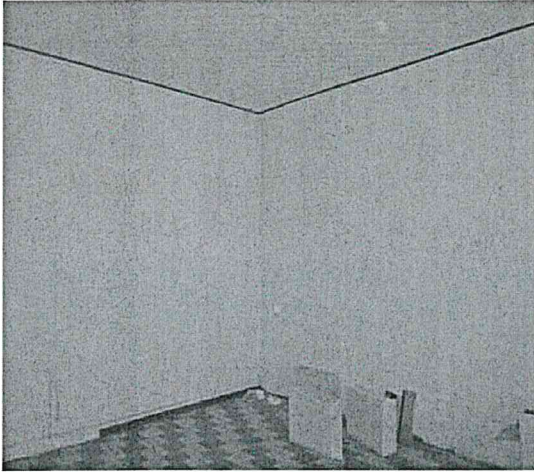






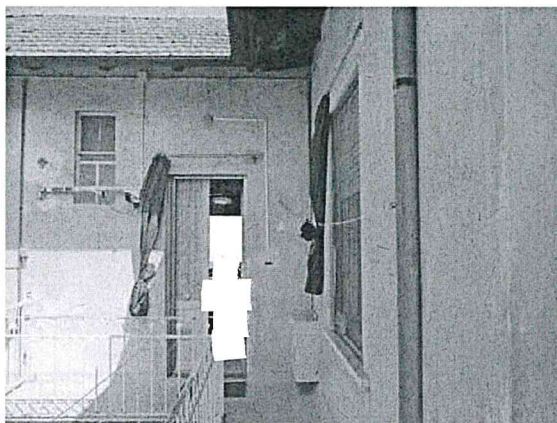
**Mappale 3292 sub.8**

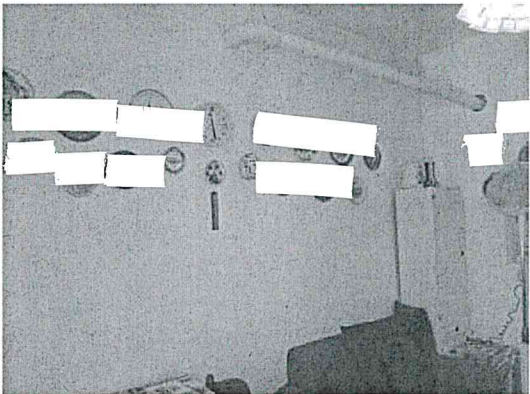
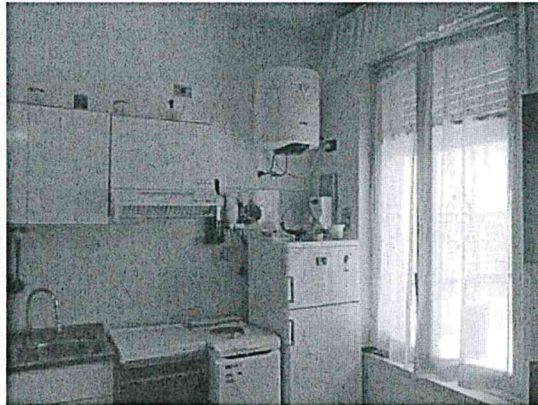






**Mappale 3292 sub.6**







**Mappale 3292 sub.5**





Lodi, 15.09.23  
Il perito estimatore: Arch. Stefania Lucchini