

TRIBUNALE ORDINARIO DI PRATO
ESECUZIONI IMMOBILIARI

ESECUZIONE IMMOBILIARE R.G. n° 38/2020
G.E. Dott.ssa STEFANIA BRUNO

IMMOBILE

Appartamento per civile abitazione in Via Filippo Strozzi n.32
59100 Prato (PO)

ALLEGATO N.2

Documentazione fotografica









FOTO 1





FOTO 2



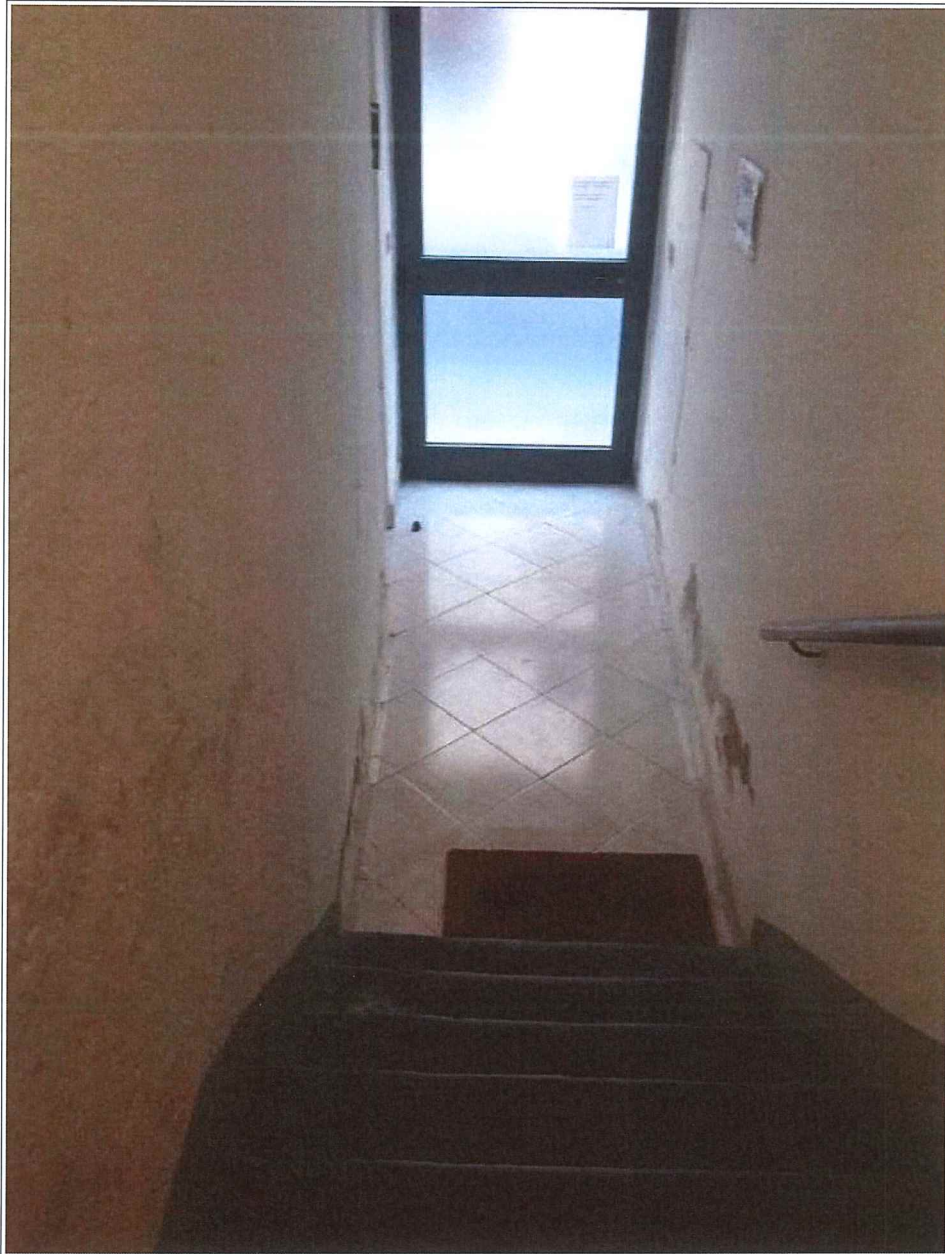


FOTO 3





FOTO 4



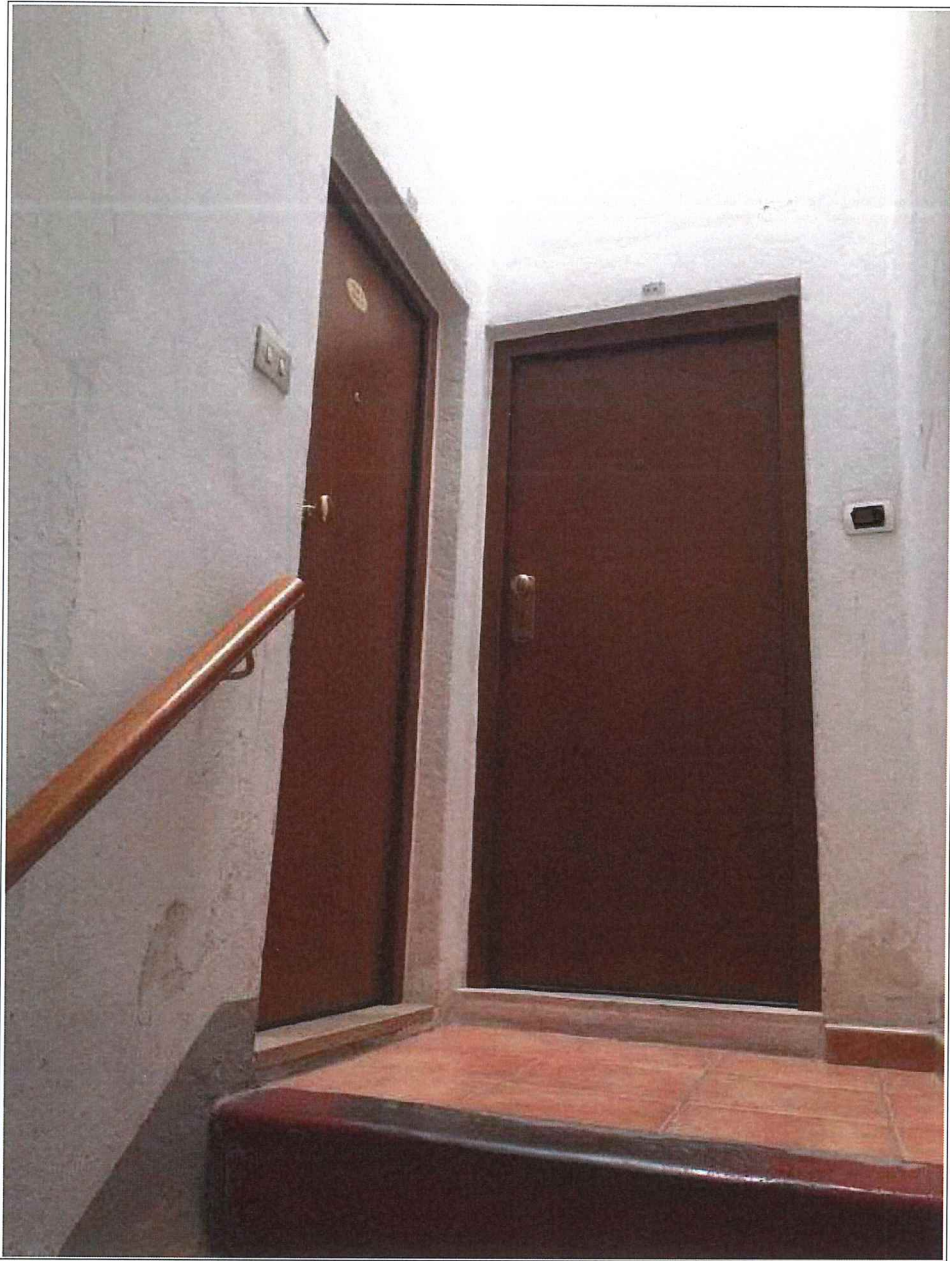


FOTO 5





FOTO 6



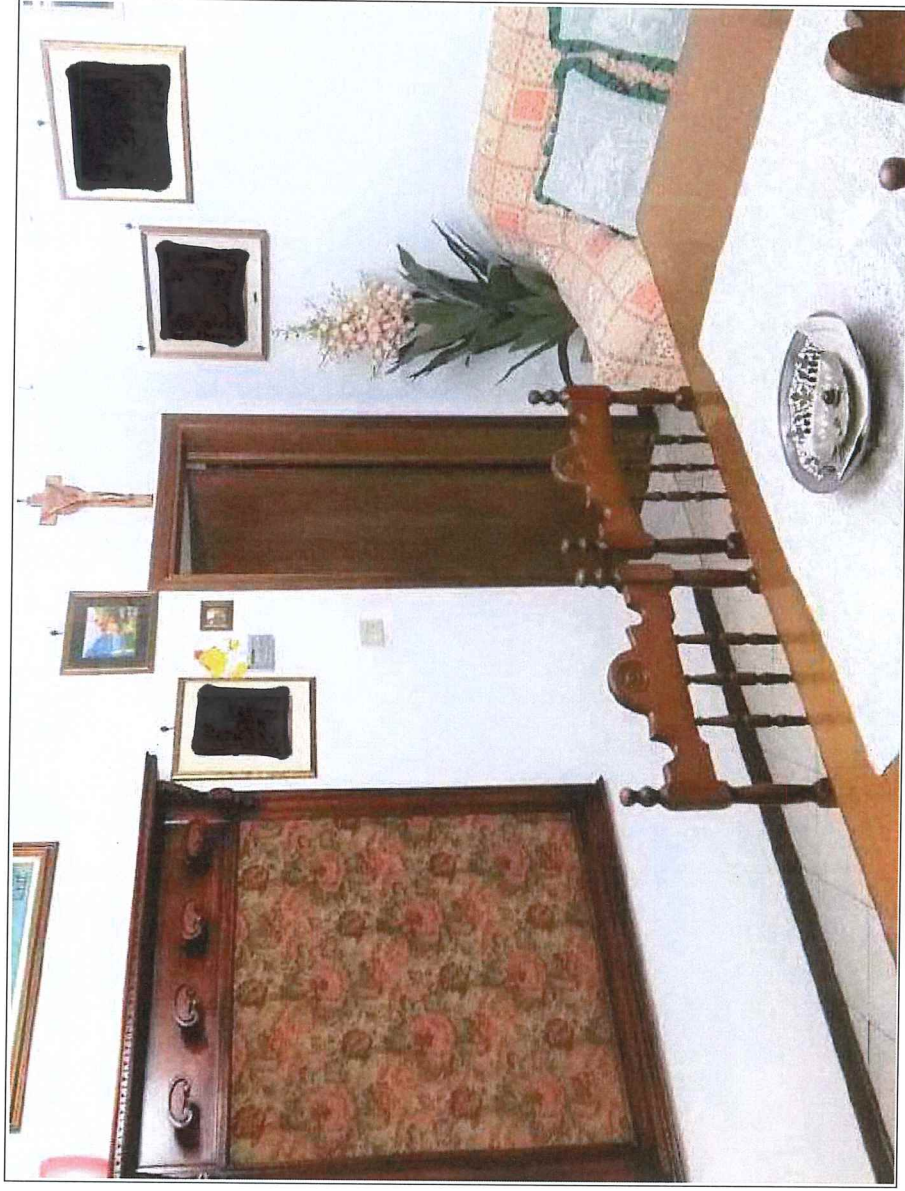


FOTO 7



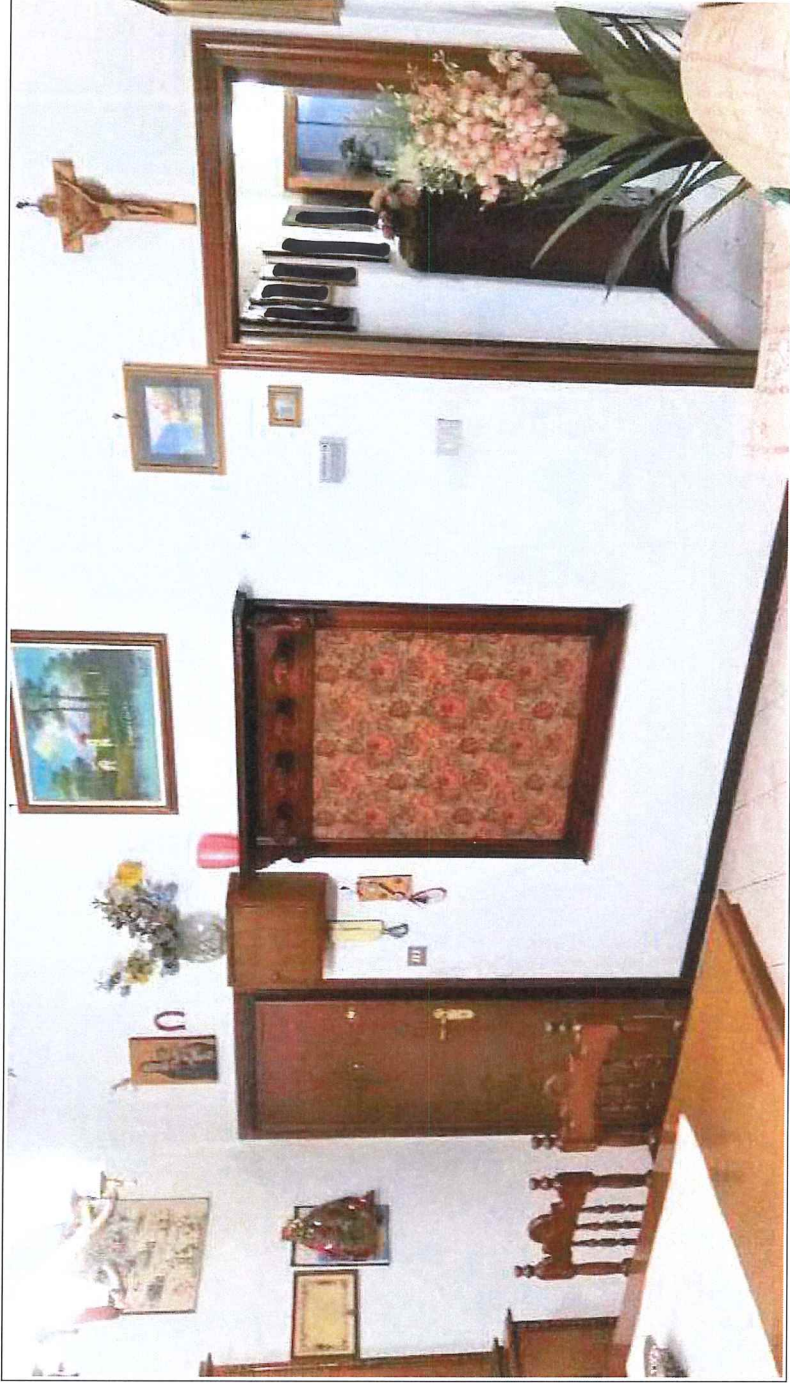


FOTO 8



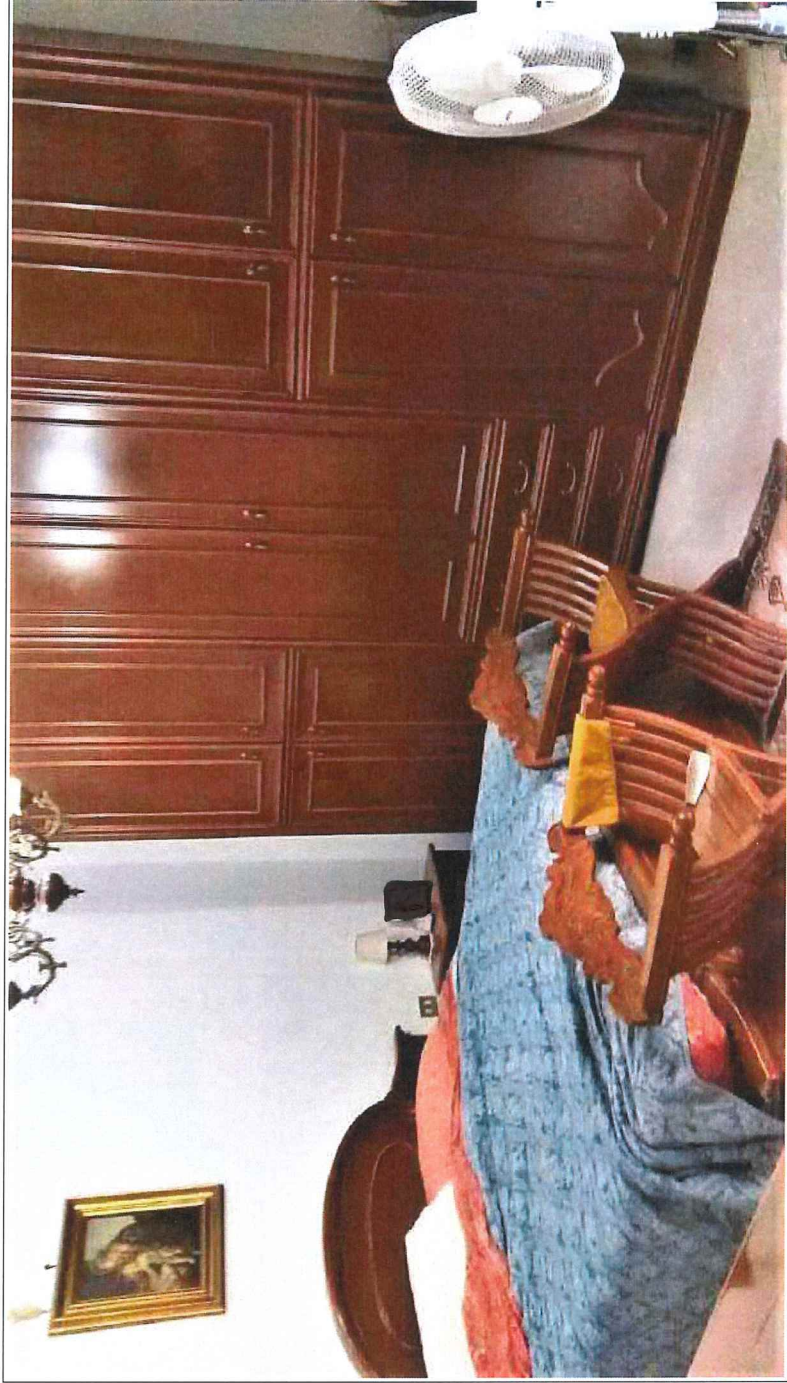


FOTO 9



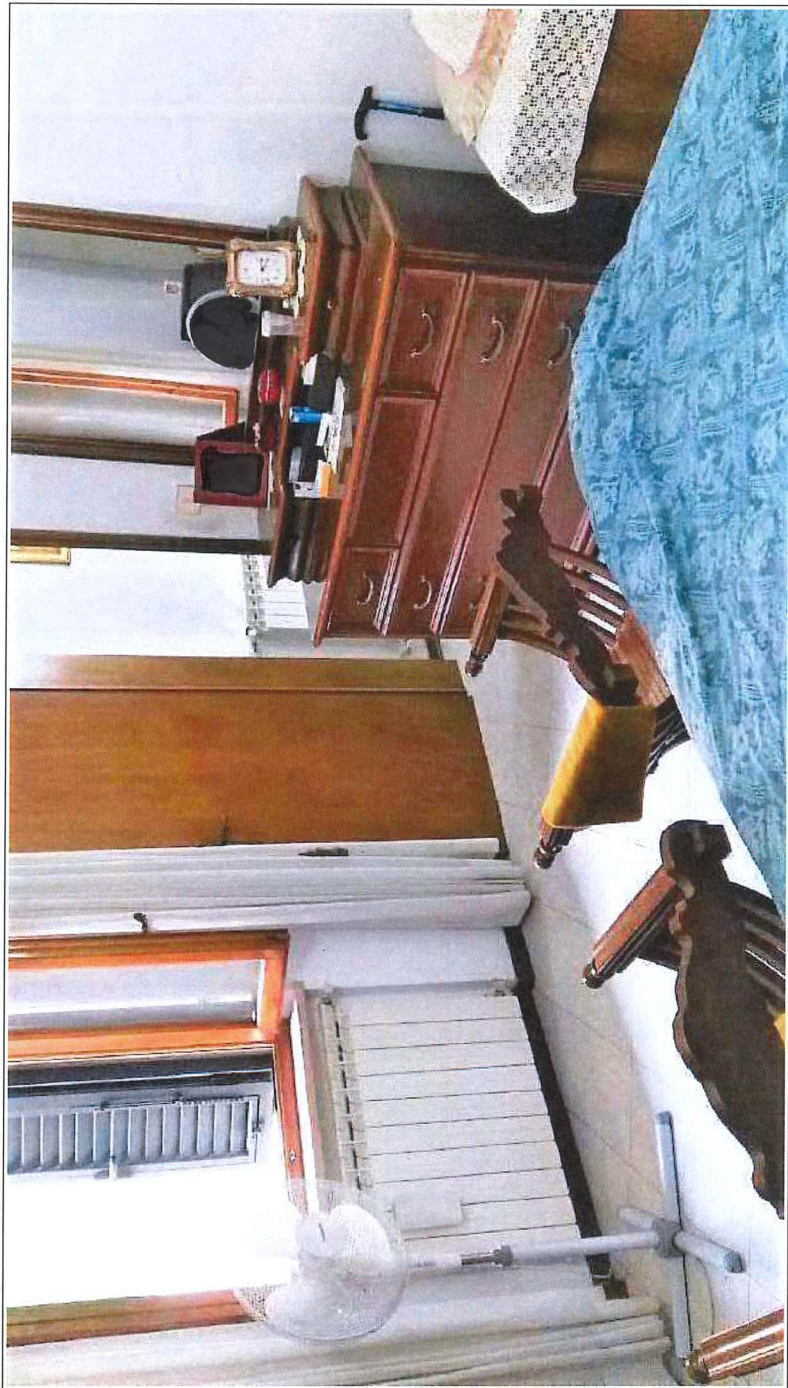


FOTO 10





FOTO 11



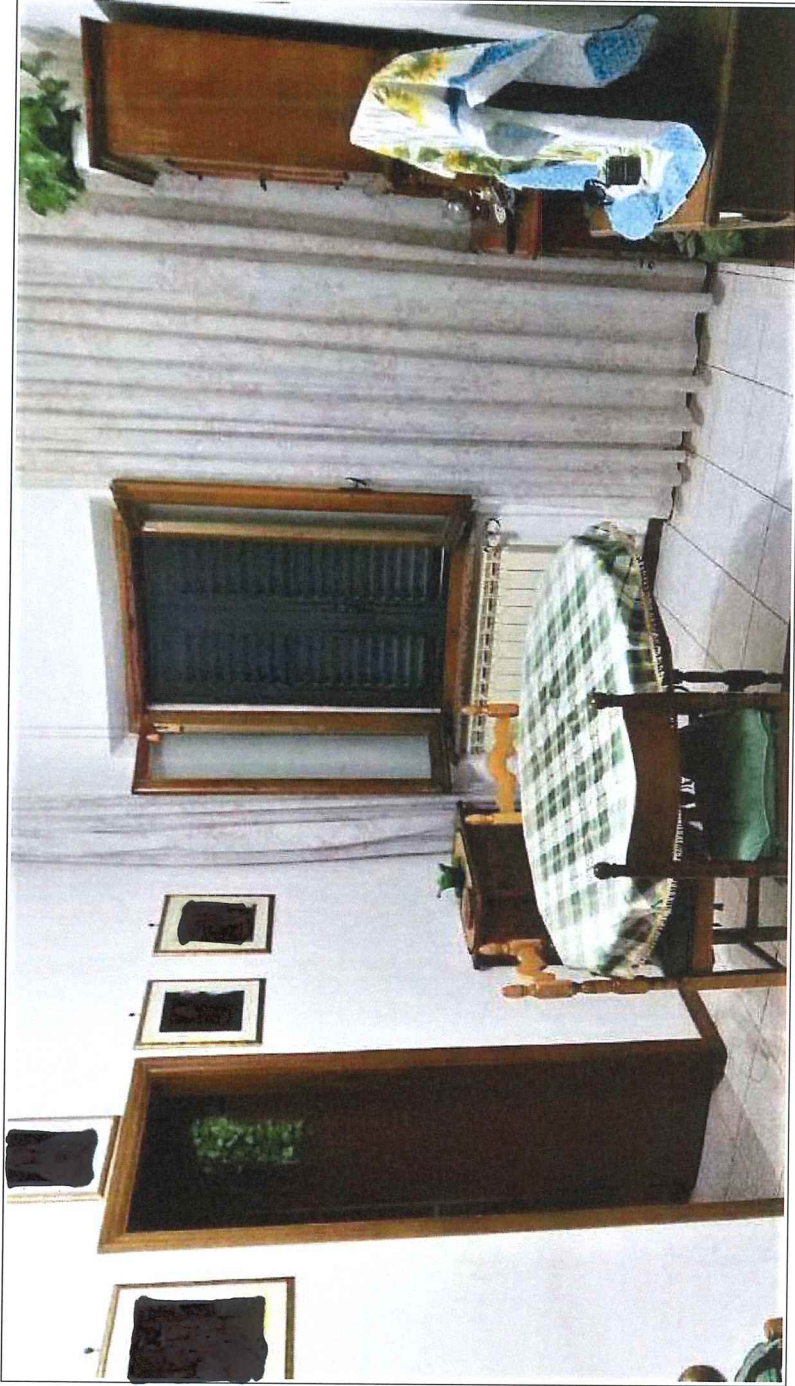


FOTO 12

