

TRIBUNALE DI LOCRI
CONSULENZA TECNICA

autorizzata dal dott. Giuseppe **CARDONA**, Giudice Delegato al fallimento della Società

"
-
-

ALLEGATO N. 4

PLANIMETRIE

- 4.1 Foglio 40 part. 708 sub 5 planimetria generale – elaborato planimetrico
 - 4.1.1 planimetria fabbr. A – dimensioni -
 - 4.1.2 planimetria fabbr. A soppalco – dimensioni –
 - 4.1.3 planimetria fabbr. B -aspetto urbanistico-
 - 4.1.4 planimetria fabbr. B - dimensioni
- 4.2 Foglio 40 part. 612 sub 2
 - 4.2.1 planimetria generale – dimensioni
 - 4.2.2 pianta corpo A – dimensioni
- 4.3 Foglio 40 part. 706
 - 4.3.1 planimetria – dimensioni

Il Consulente Tecnico

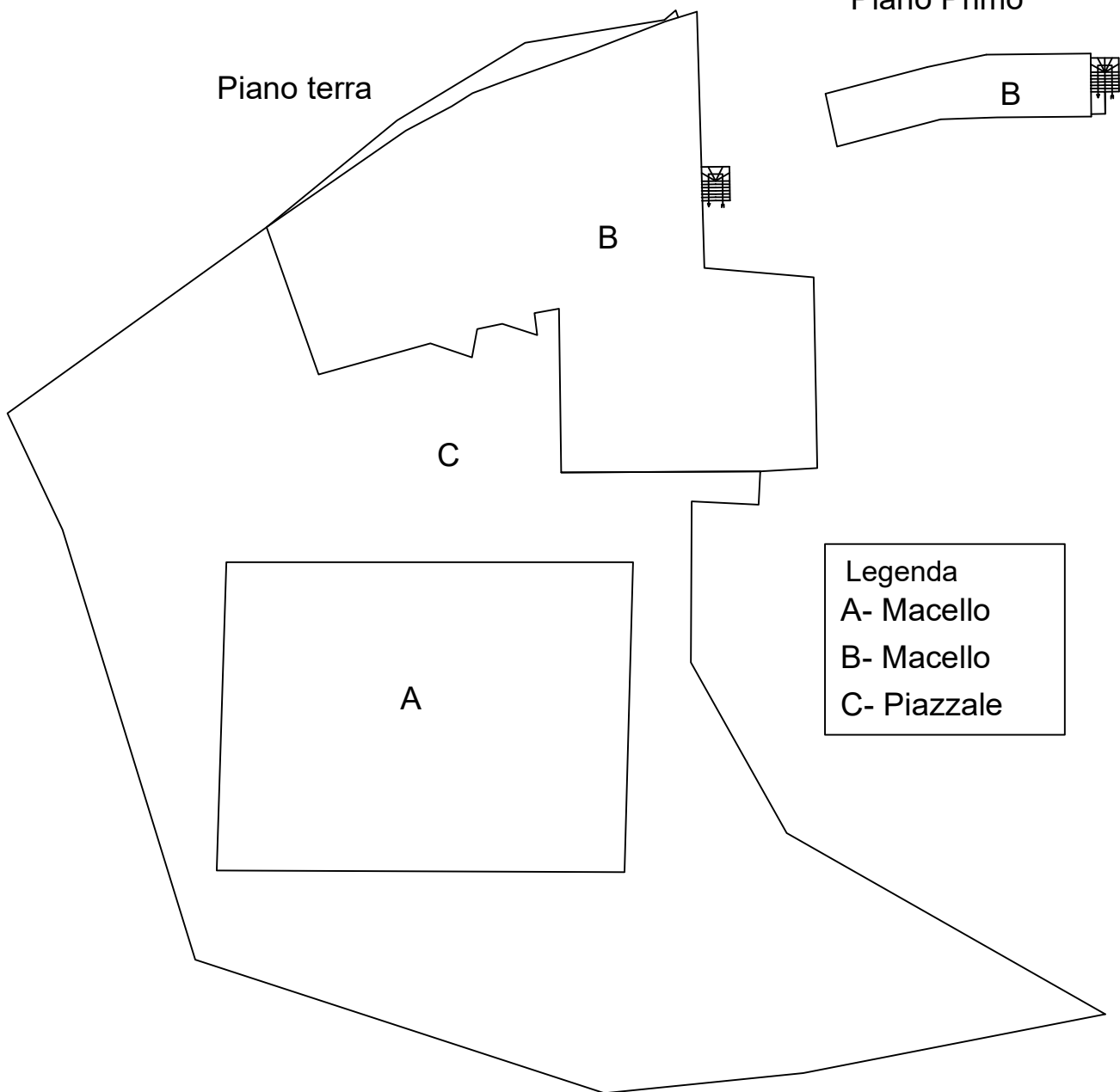
(ing.
-
-

Comune di Gotteria

Foglio 40 particella 708 sub 5

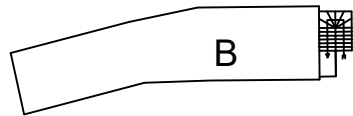
ALLEGATO 4.1.A

Planimetria generale



Piano Primo

Piano terra

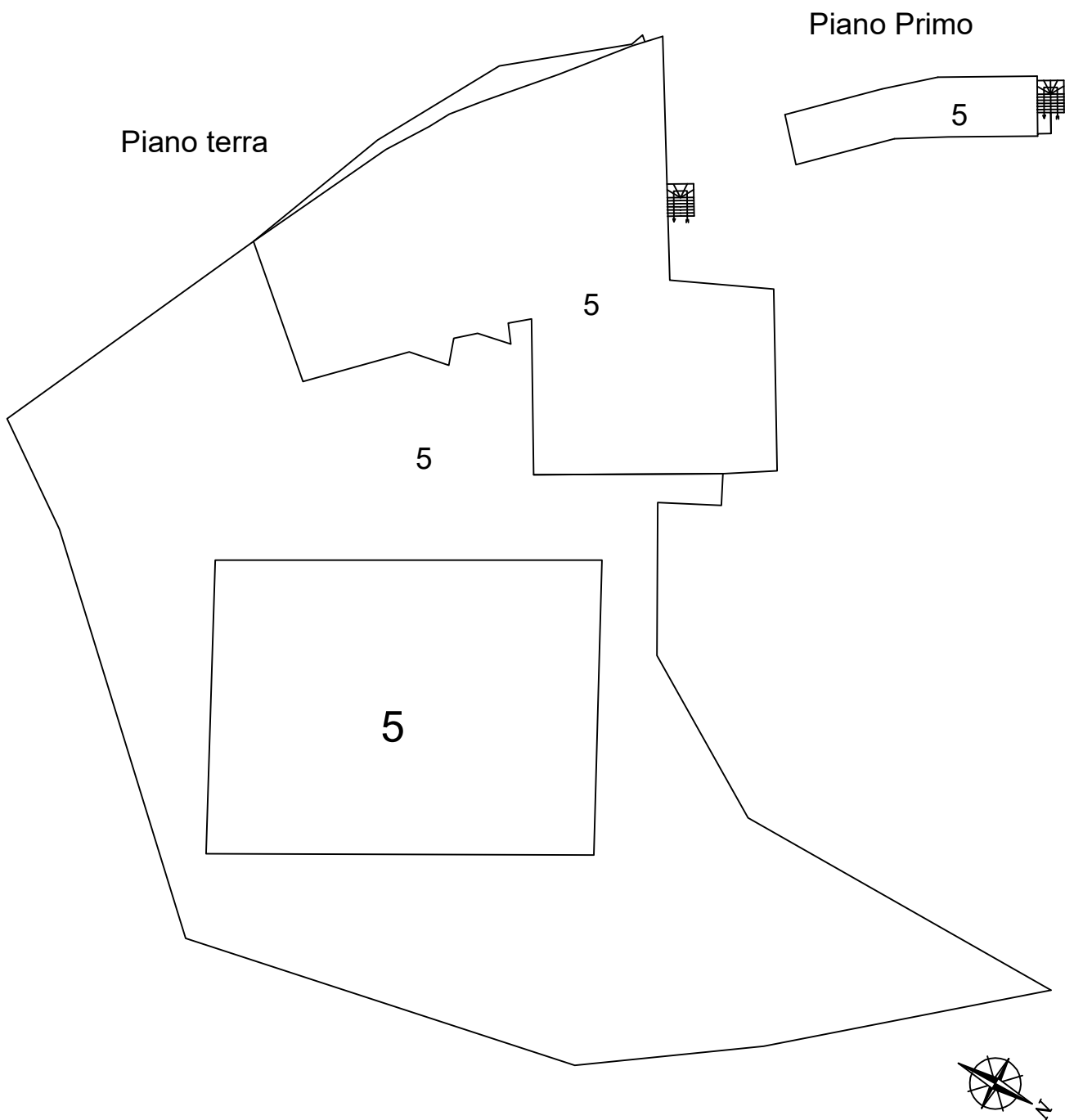


Legenda
A- Macello
B- Macello
C- Piazzale



scala 1:500

ELABORATO PLANIMETRICO

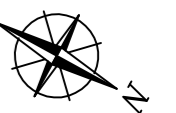


scala 1:500

ALLEGATO 4.1.2A



scala 1:100



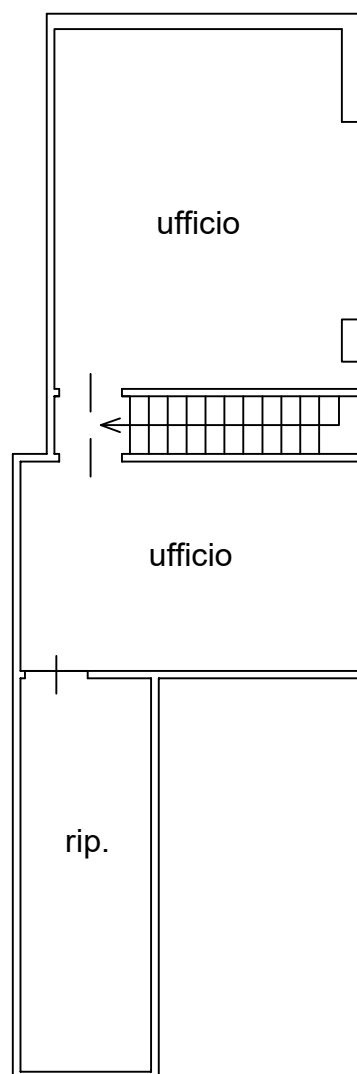
Fabbricato A
Piano terra



scala 1:100



Fabbricato A
SOPPALCO

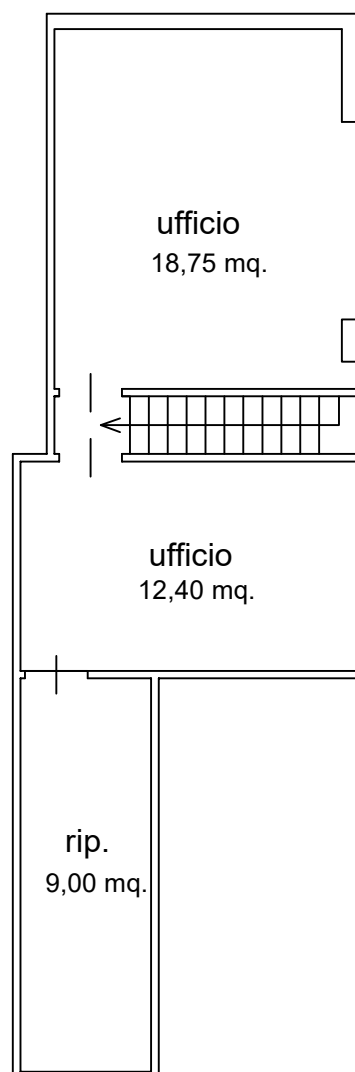


scala 1:100

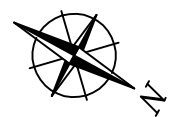


Fabbricato A
SOPPALCO

superficie perimetrale 48,50 mq.
superficie utile 40,15 mq.

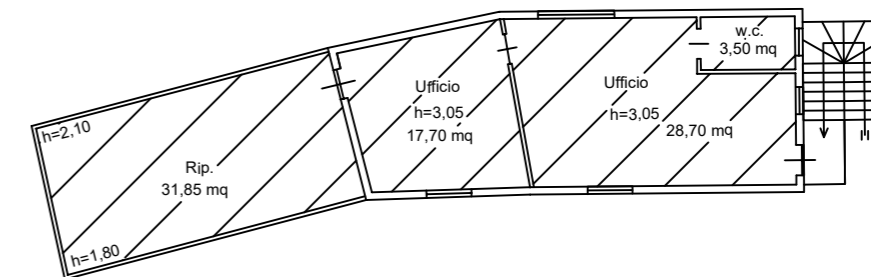
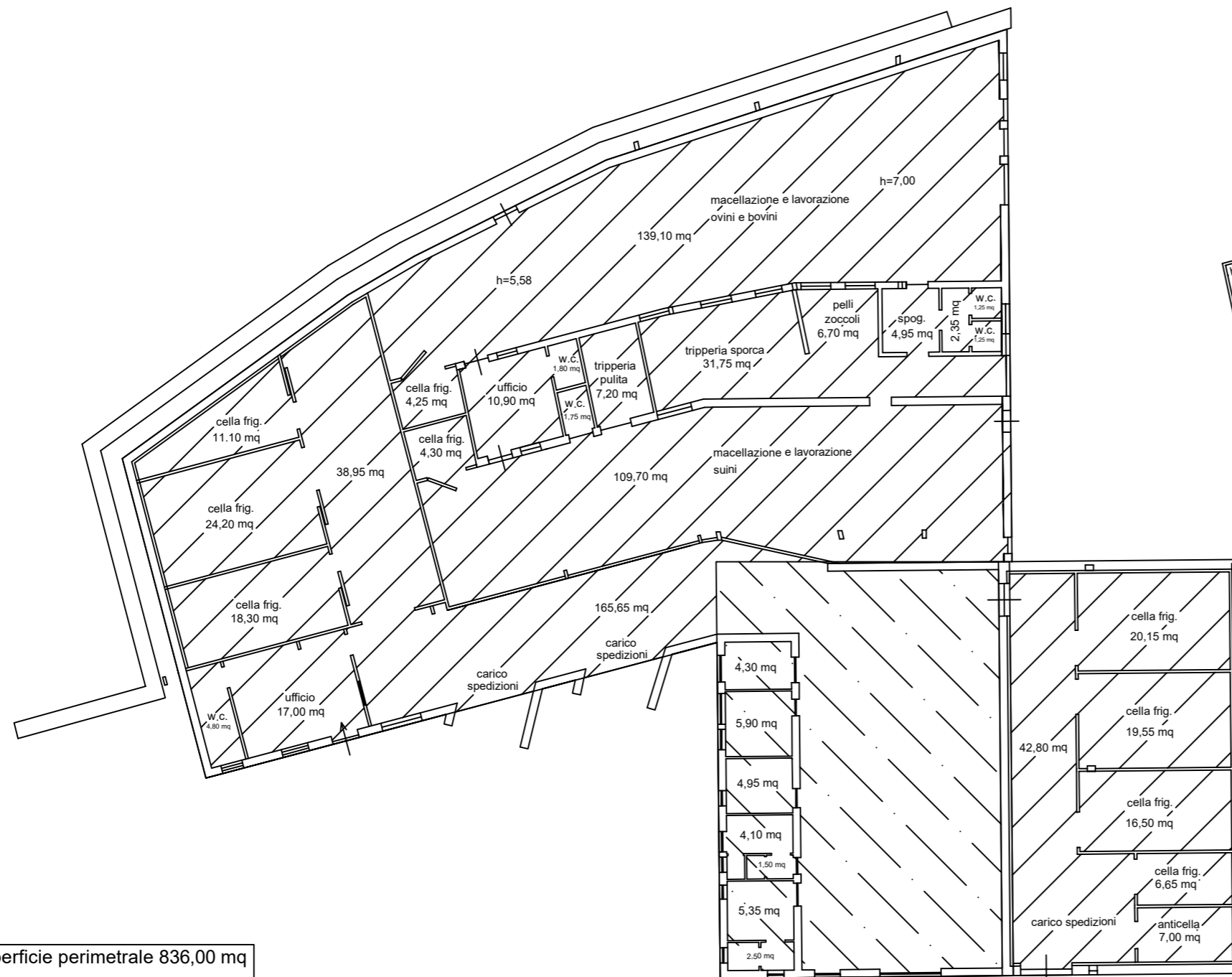


scala 1:100



Fabbricato B
 Piano terra

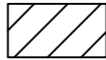

Fabbricato B
 Piano primo



superficie perimetrale 90,55 mq
 superficie utile 81,75 mq

superficie perimetrale 836,00 mq
 superficie utile 697,15 mq

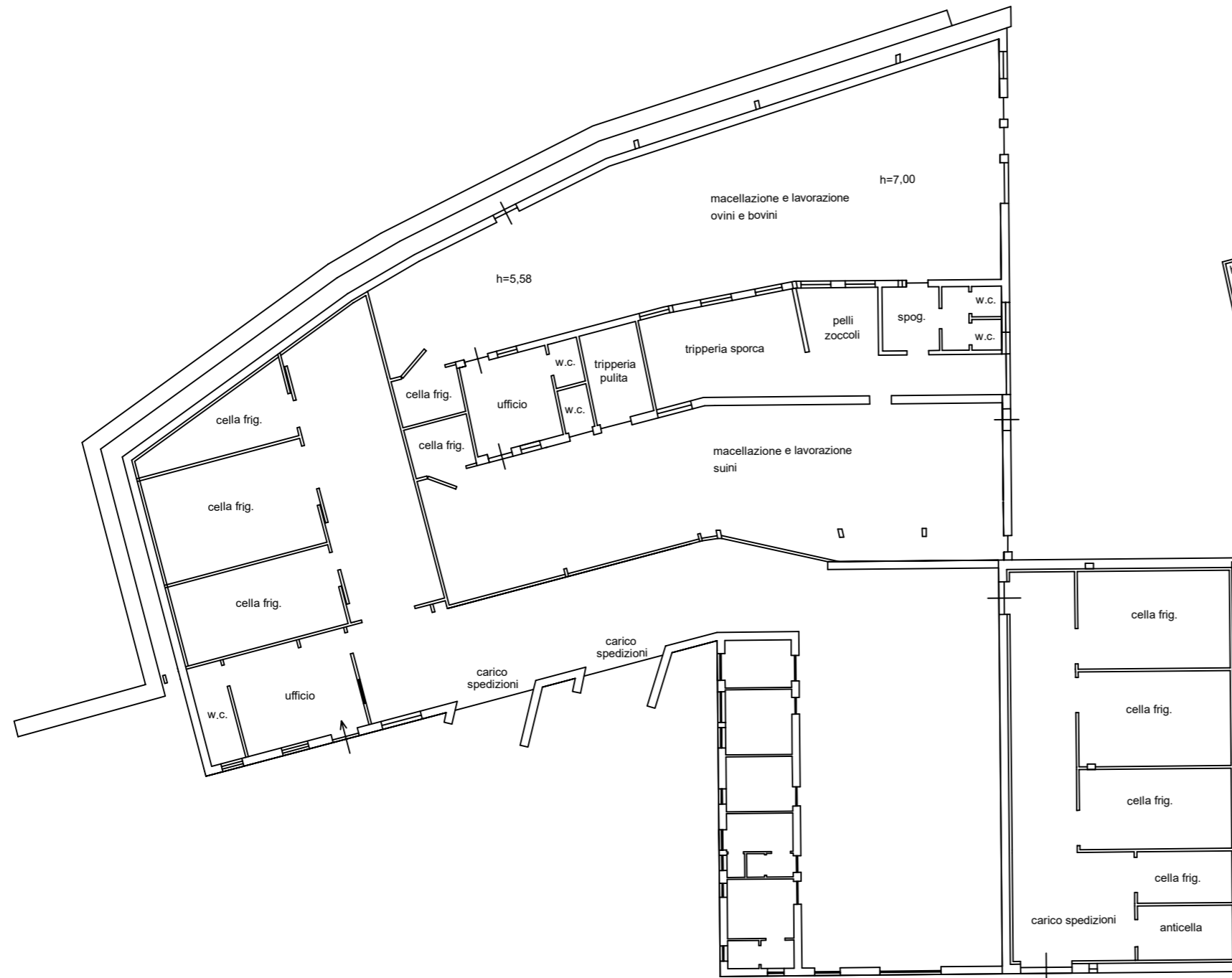
Condizione urbanistica

-  PORZIONE ABUSIVA
mq. 670,32
-  PORZIONE AUTORIZZATA
mq. 165,68

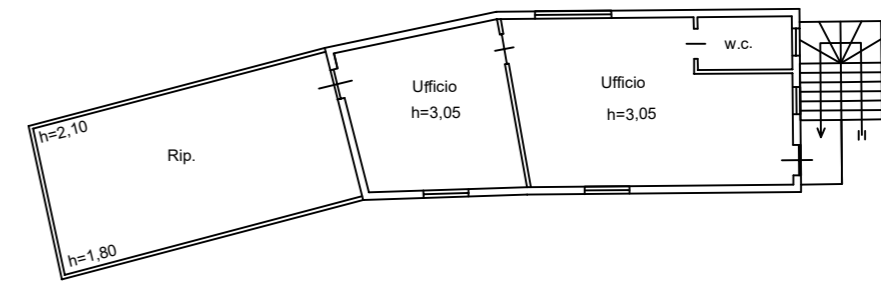
scala 1:200



Fabbricato B
Piano terra



Fabbricato B
Piano primo



scala 1:200

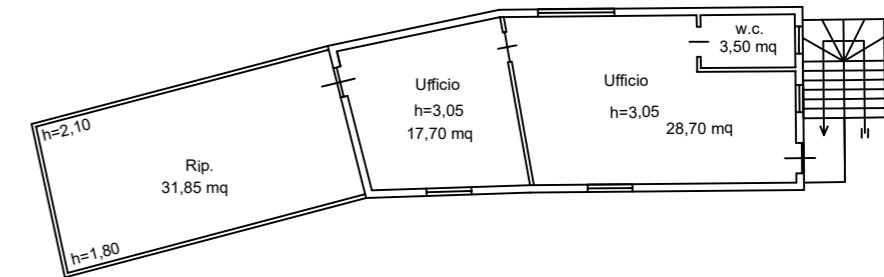


Comune di Grotteria
 fg. 40 part. 708 sub 5

Fabbricato B Piano terra

ALLEGATO 4.1.5B

Fabbricato B Piano primo



superficie perimetrale 90,55 mq
 superficie utile 81,75 mq

superficie perimetrale 836,00 mq
 superficie utile 697,15 mq

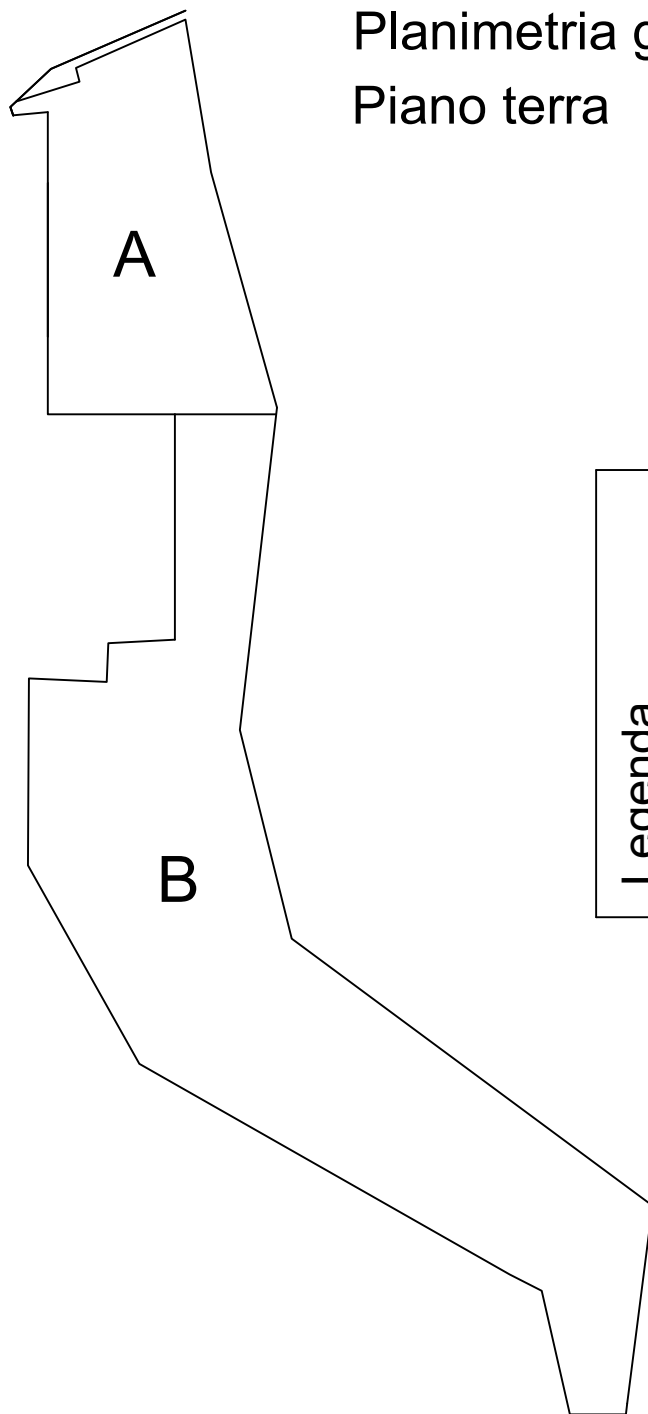
scala 1:200



Comune di Grotteria
fig. 40 part. 612 sub 2

ALLEGATO 4.2.1A

Planimetria generale
Piano terra



Legenda
A- tettoia
B- spazio di manovra

scala 1:500



Planimetria generale
Piano terra



Legenda
A- tettoia
B- spazio di manovra

scala 1:500

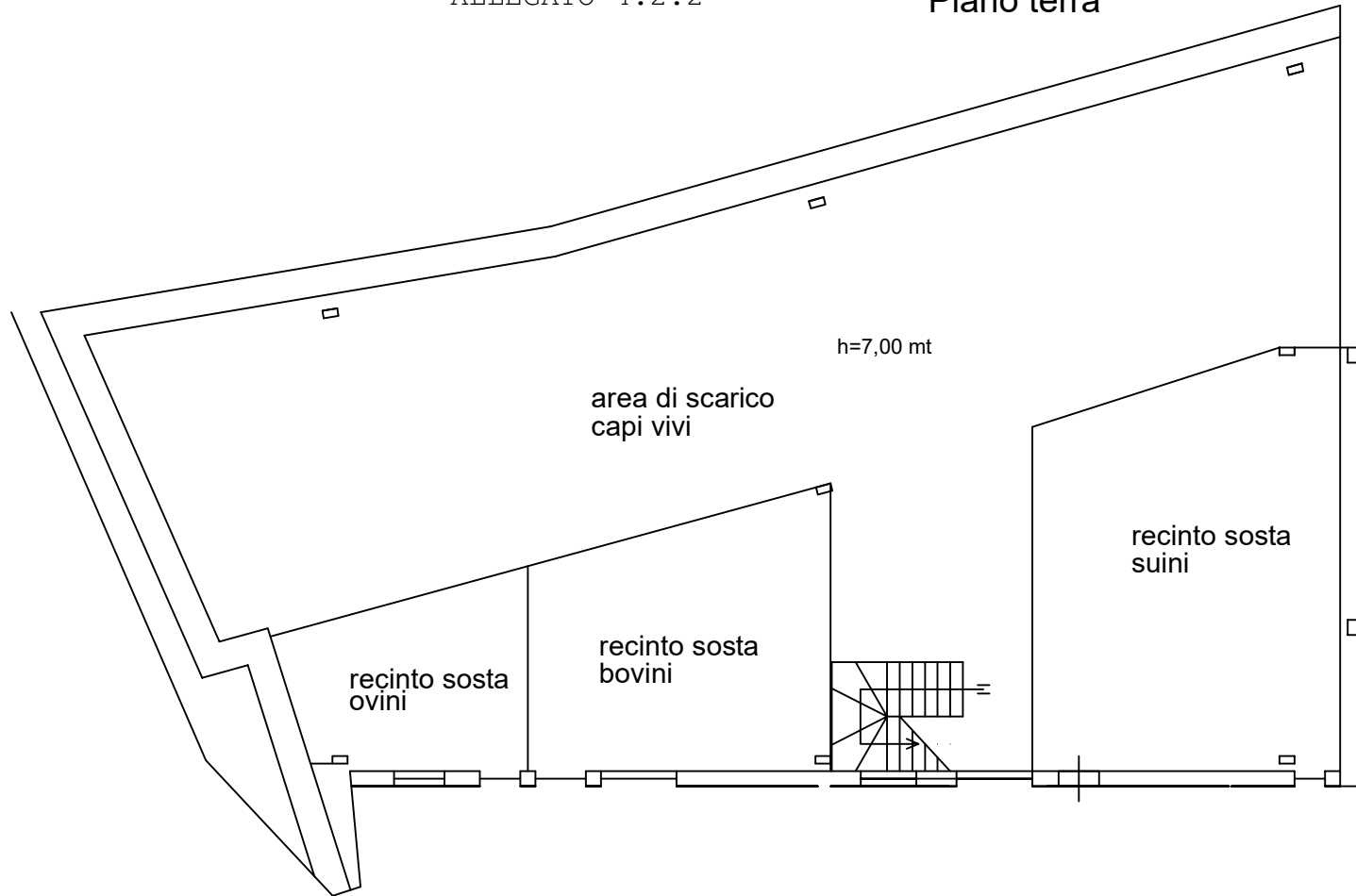



Comune di Grotteria

fig. 40 part. 612 sub 2

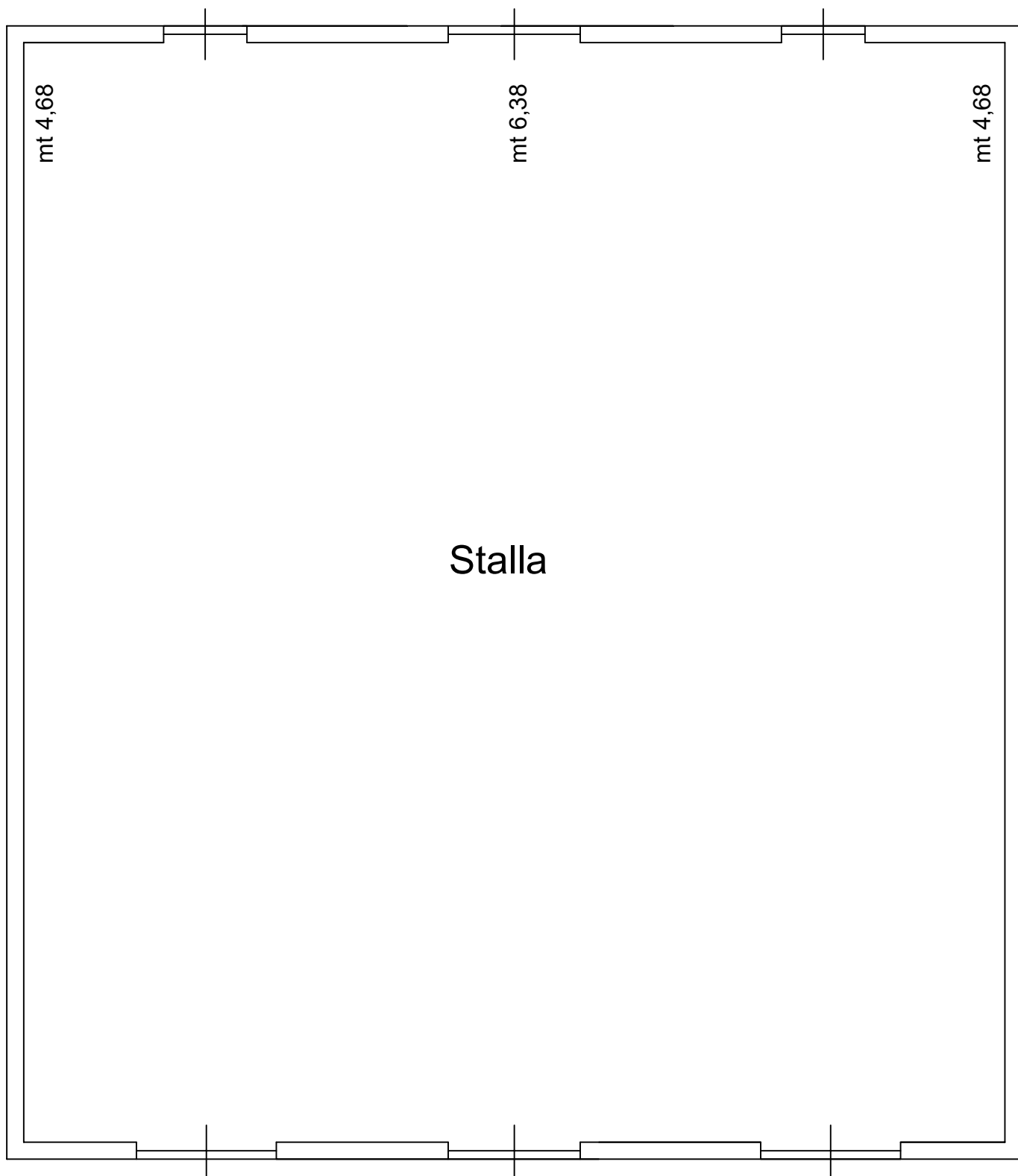
ALLEGATO 4.2.2

Corpo A
Piano terra



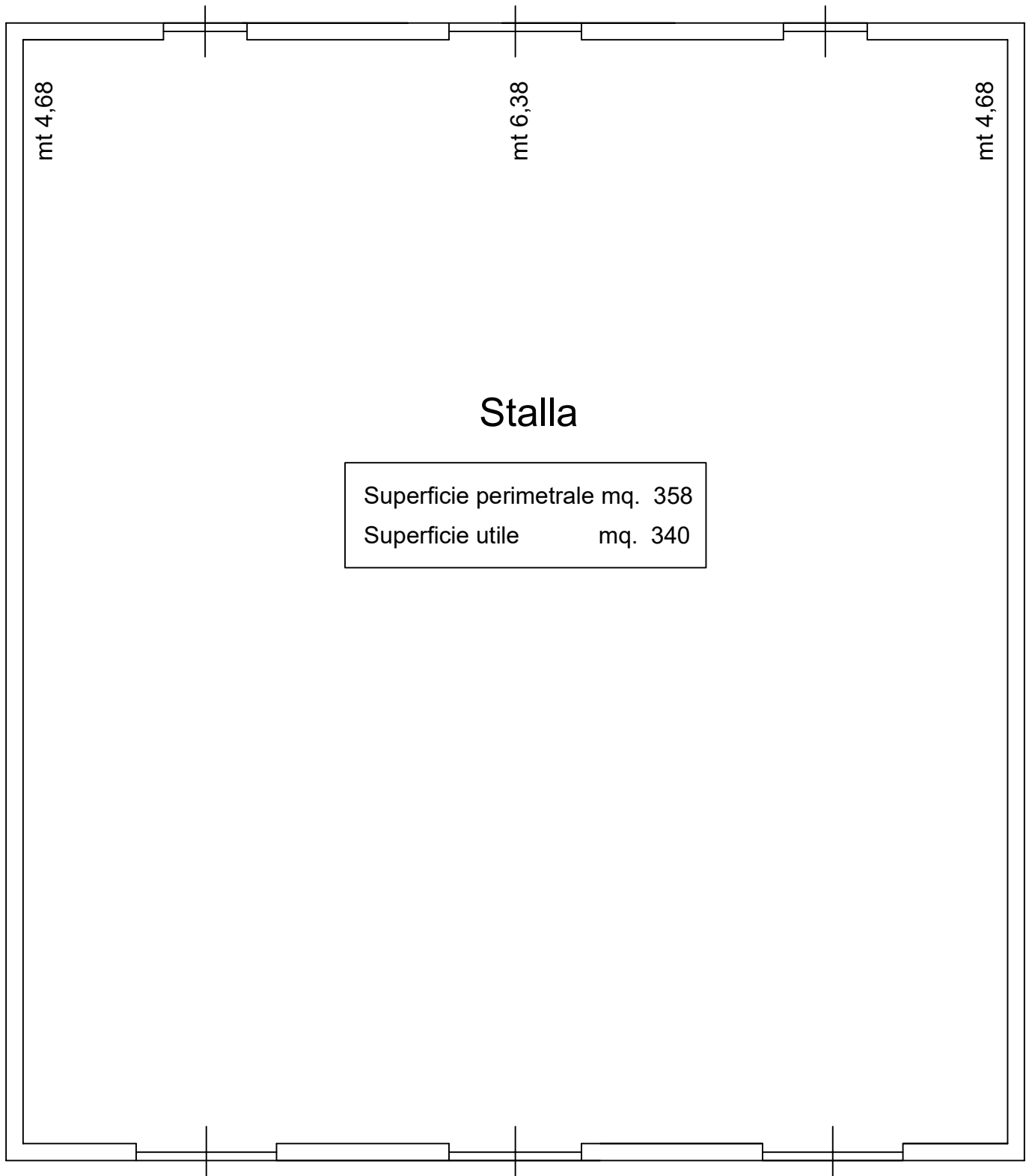

scala 1:100

Piano terra



Fg. 40 part. 706

Piano terra



scala 1:100

