





Foto n° 1 – Vista da via Svizzera lato sud-est – (freccia: veranda su posto auto).



Foto n° 2 – Vista da via Svizzera lato nord-est – (freccia: ingresso).







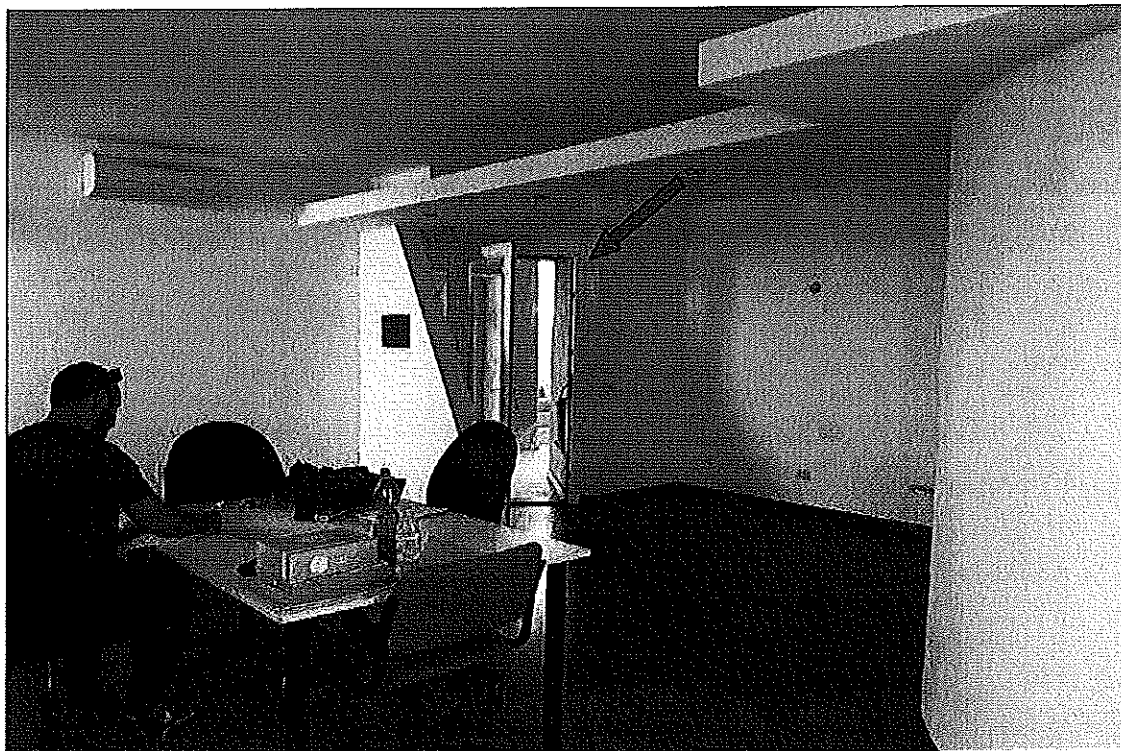


Foto n° 7 – Ufficio - (freccia: ingresso).

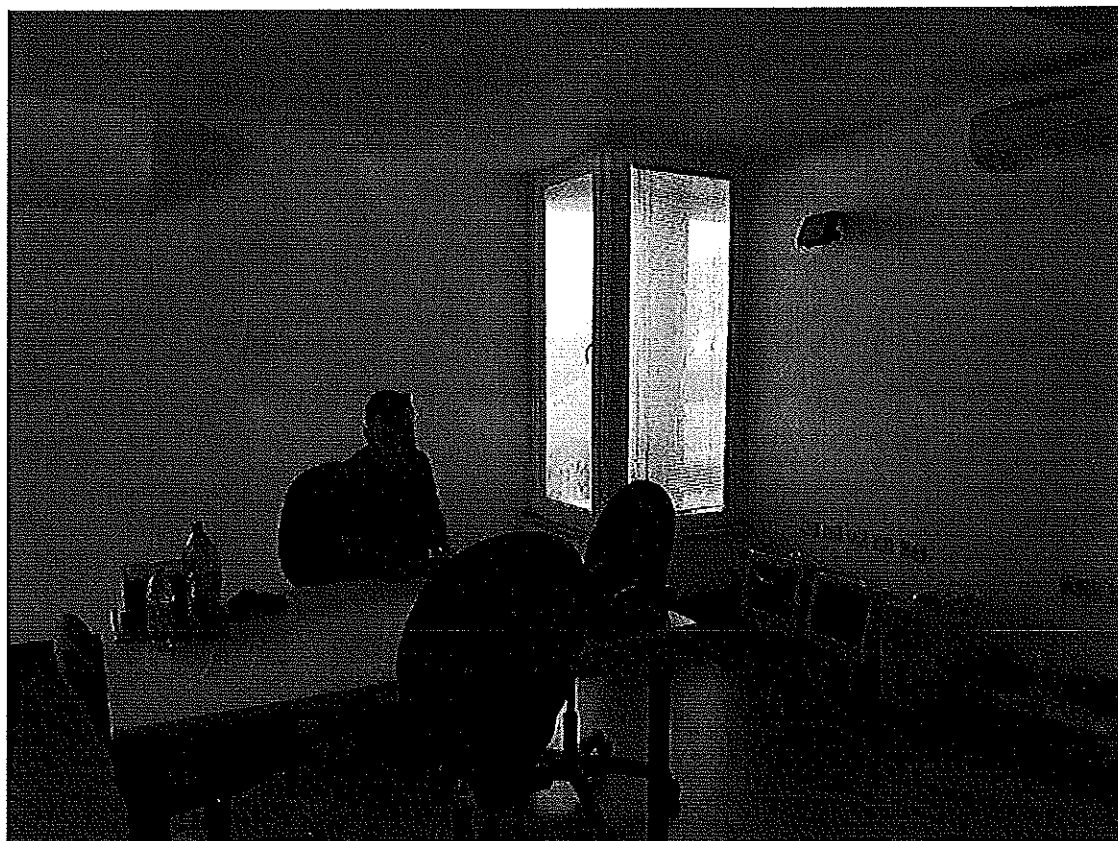


Foto n° 8 – Interno ufficio.

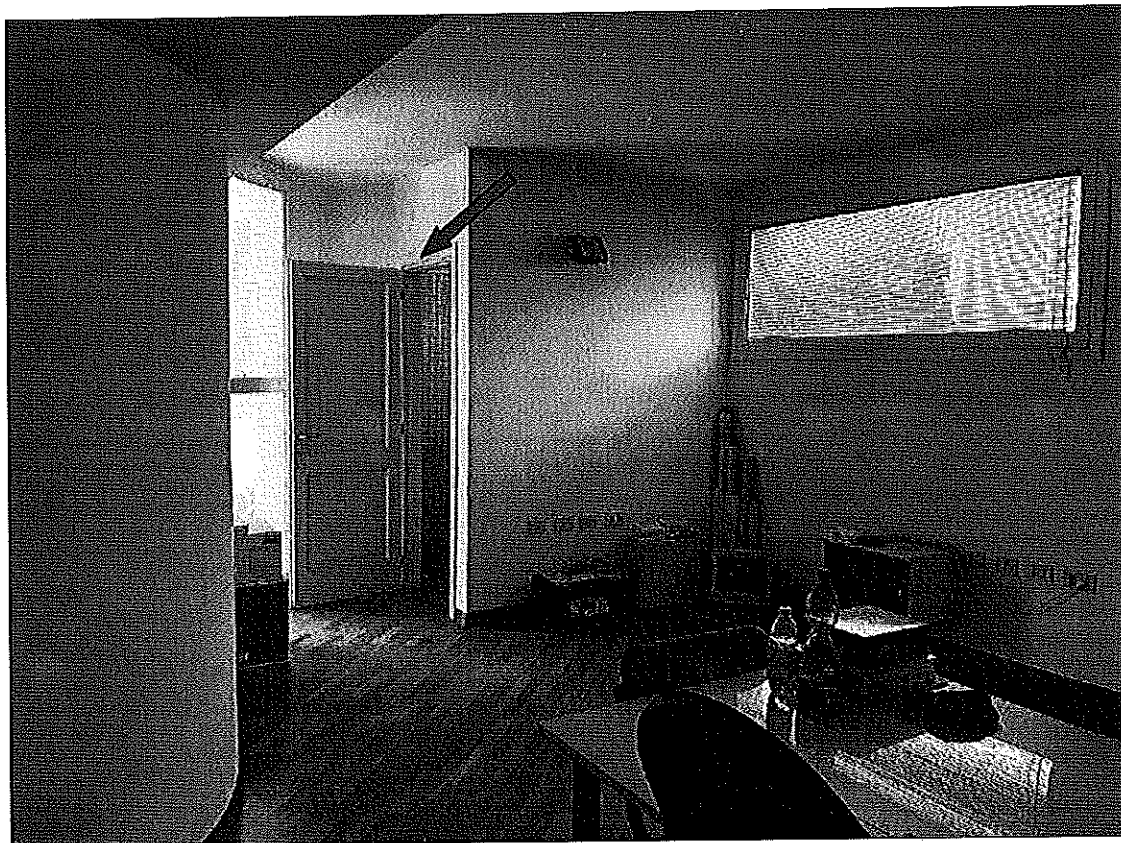


Foto n° 9 - Interno ufficio - (freccia: bagno).

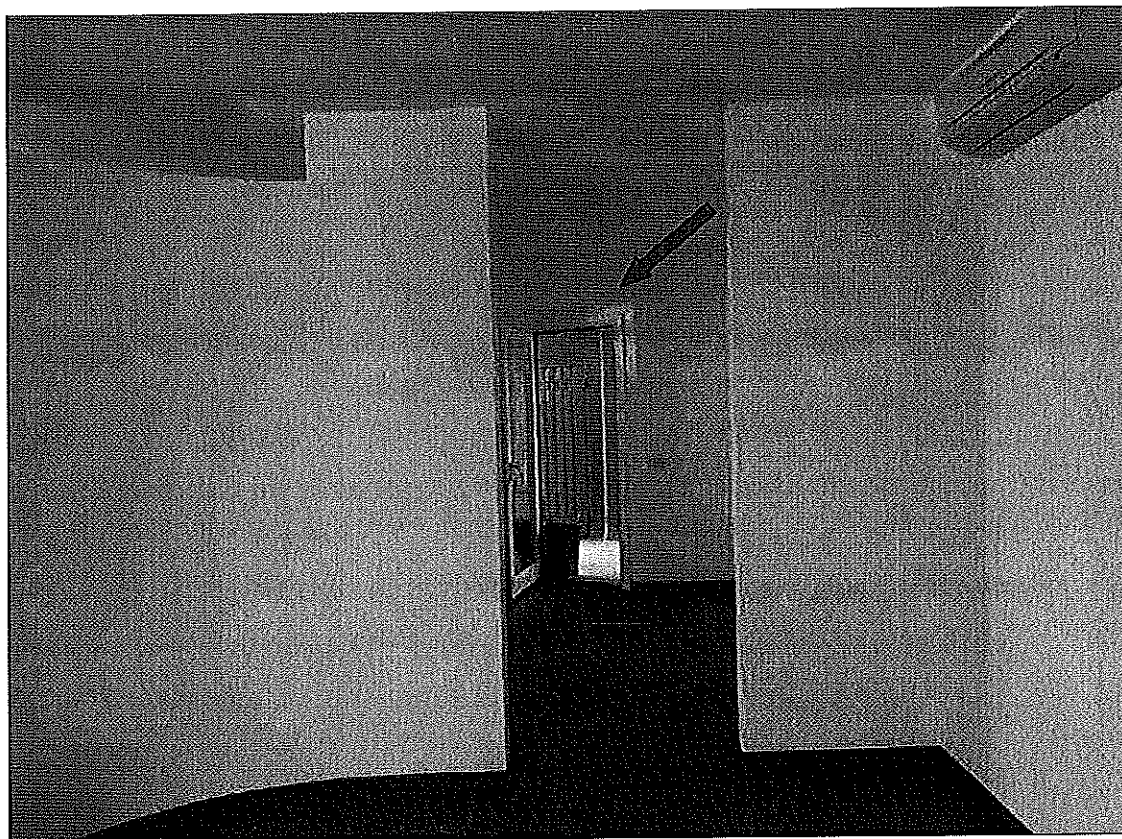


Foto n° 10 – Ufficio interno - (freccia: porta d'ingresso).









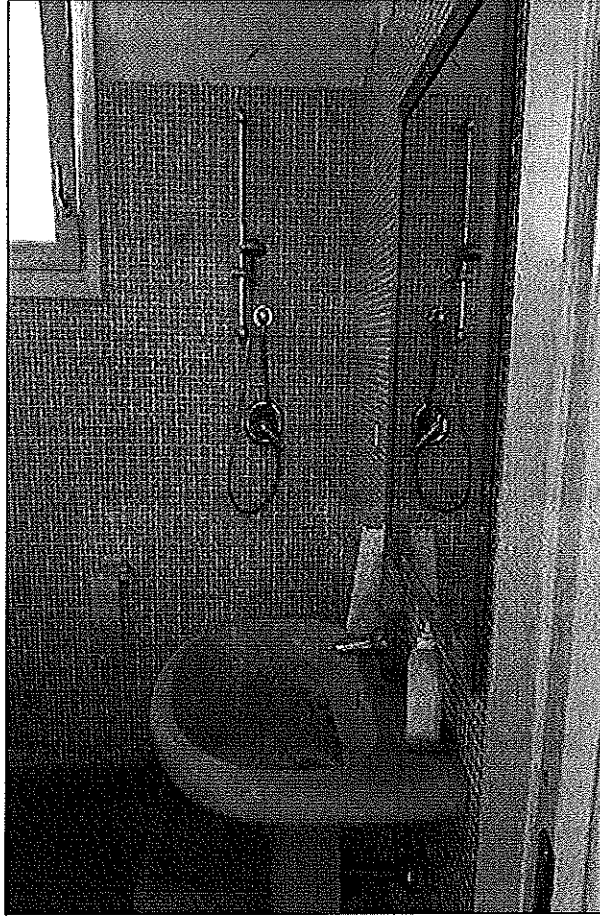


Foto n° 15 – Bagno.

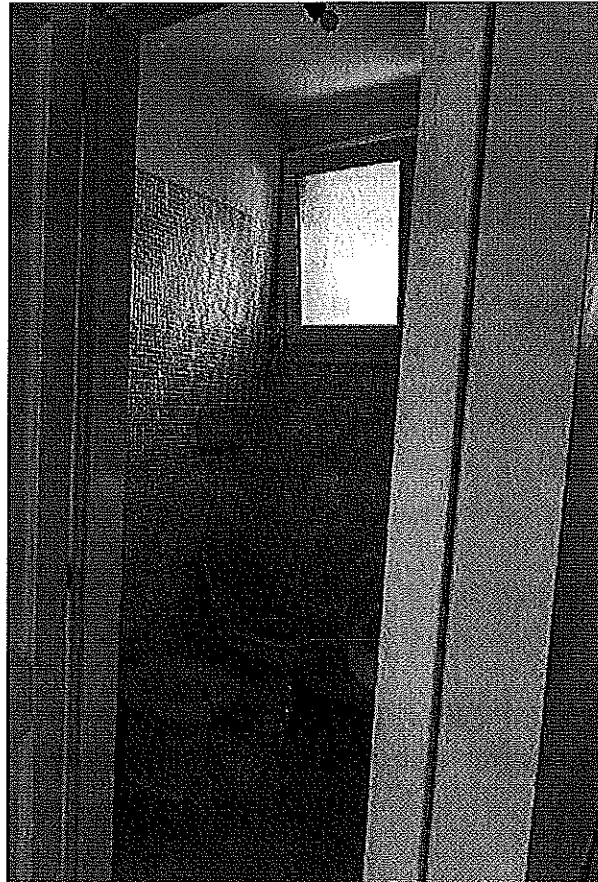


Foto n° 16 – Bagno.



# "Infissi"

## (Esterni e interni)



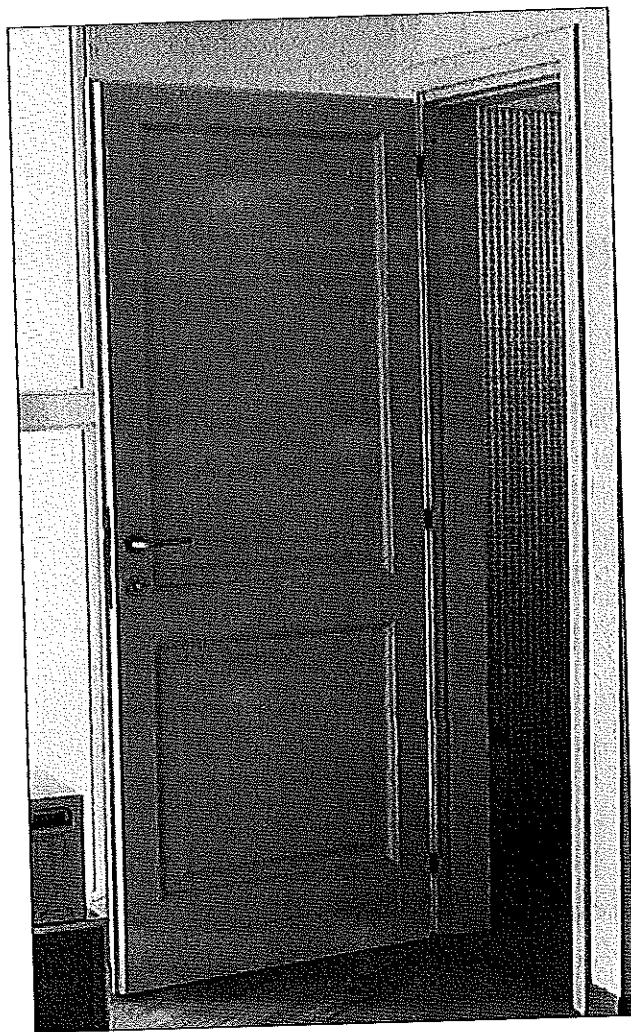


Foto n° 17 – Tipologia porta interna.

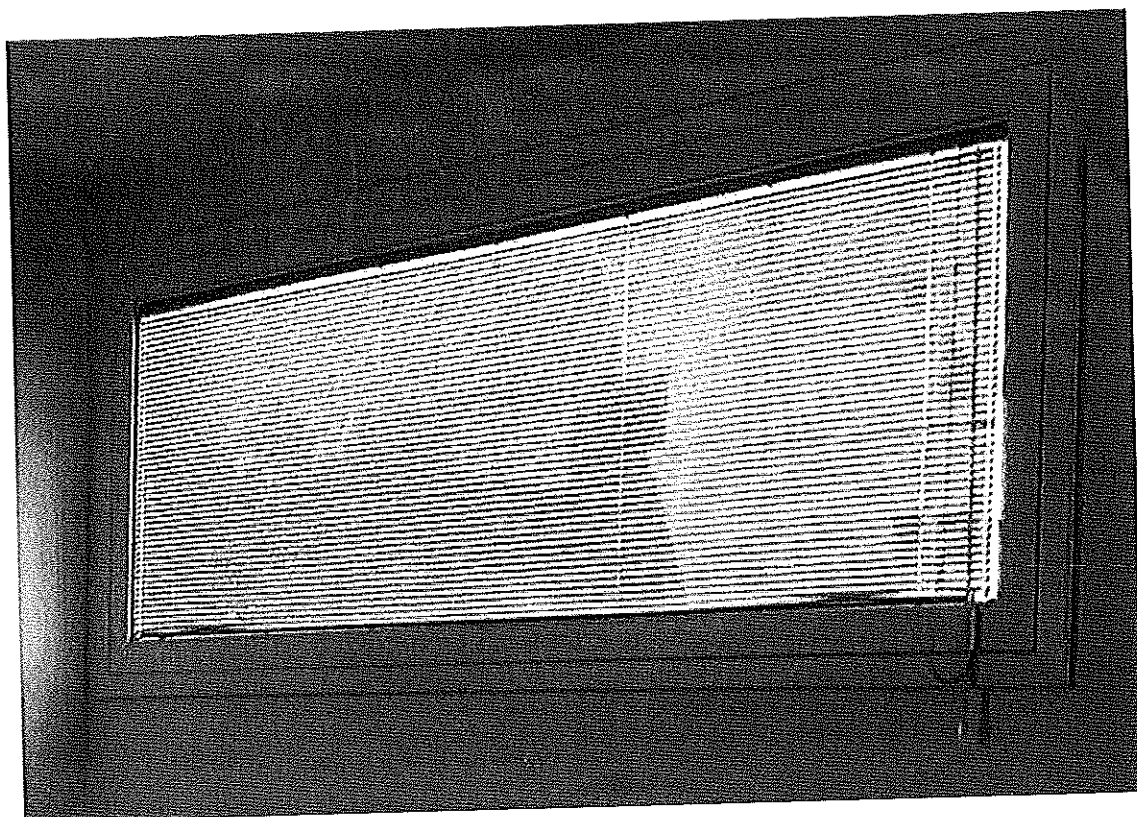


Foto n° 18 – Tipologia infisso esterno.



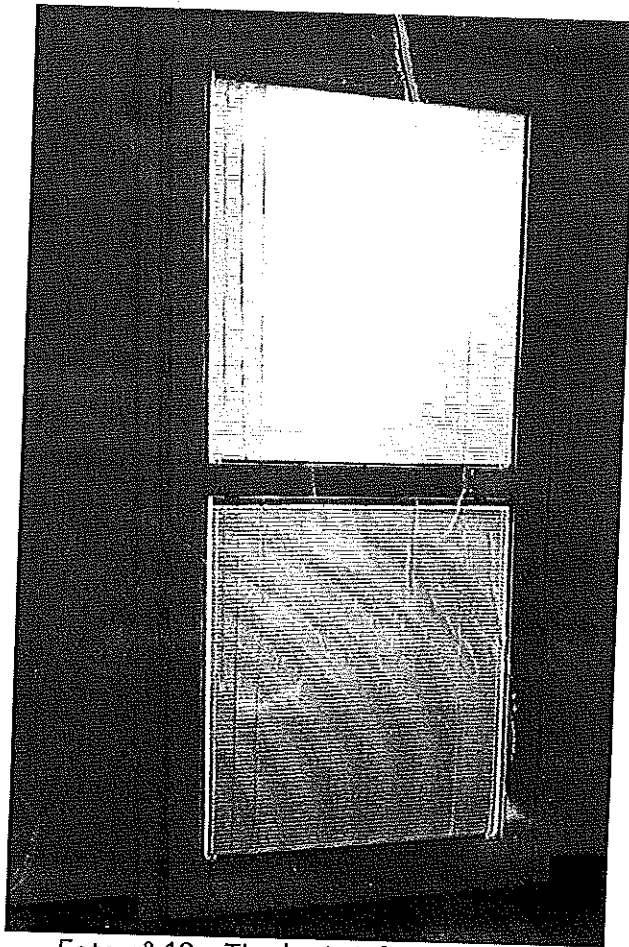


Foto n° 19 – Tipologia infisso esterno.

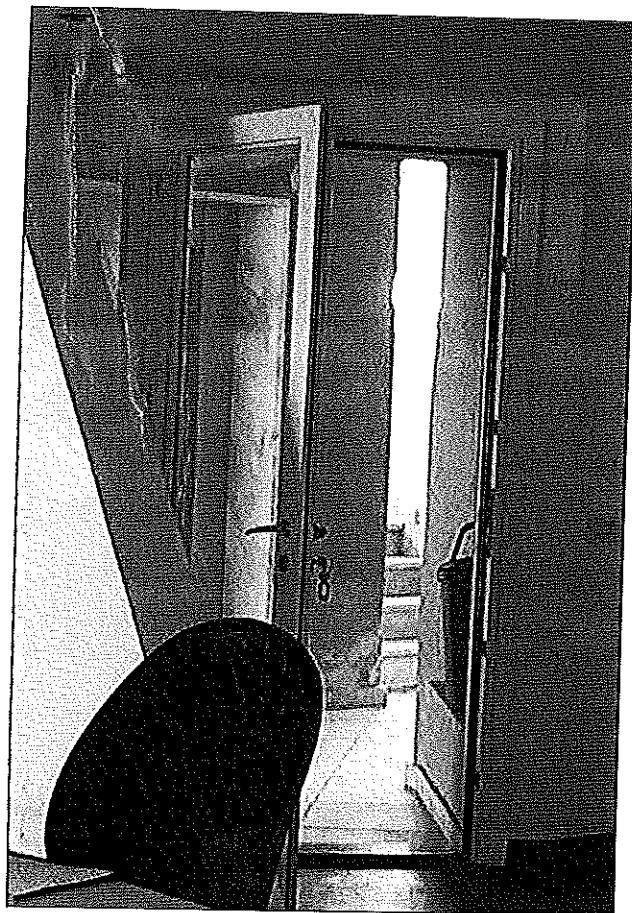


Foto n° 20 – Tipologia infisso d'ingresso.





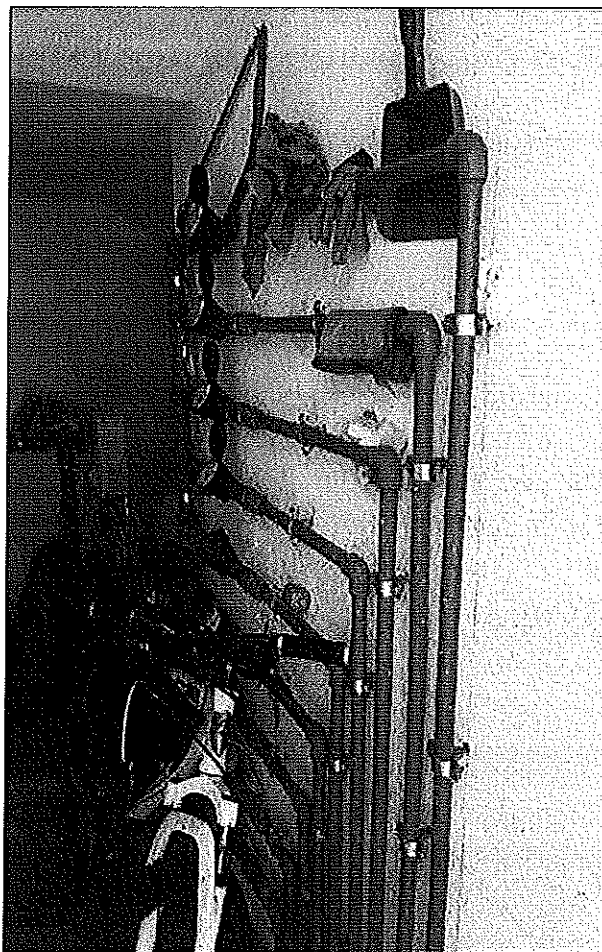


Foto n° 21 – Impianto Idrico condominiale.

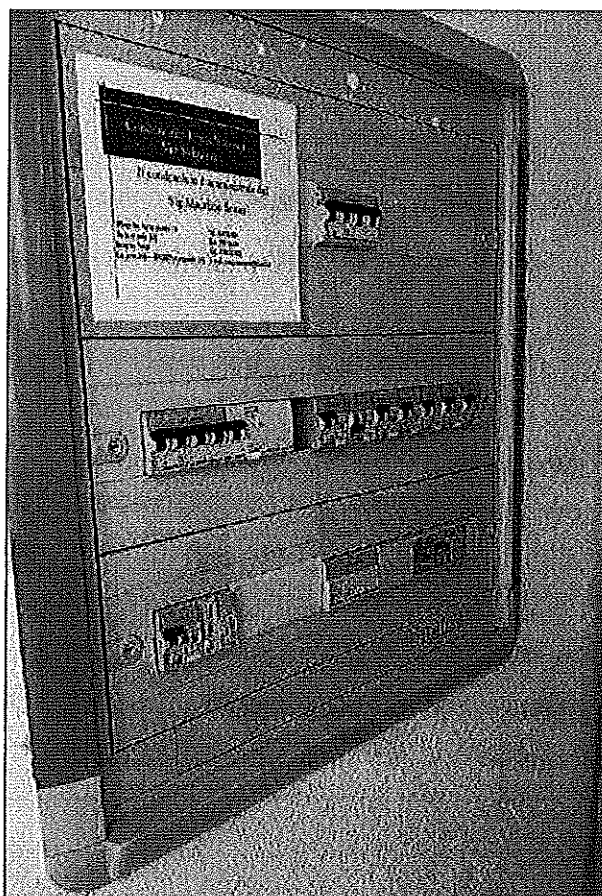


Foto n° 22 – Quadro Impianto elettrico condominiale.





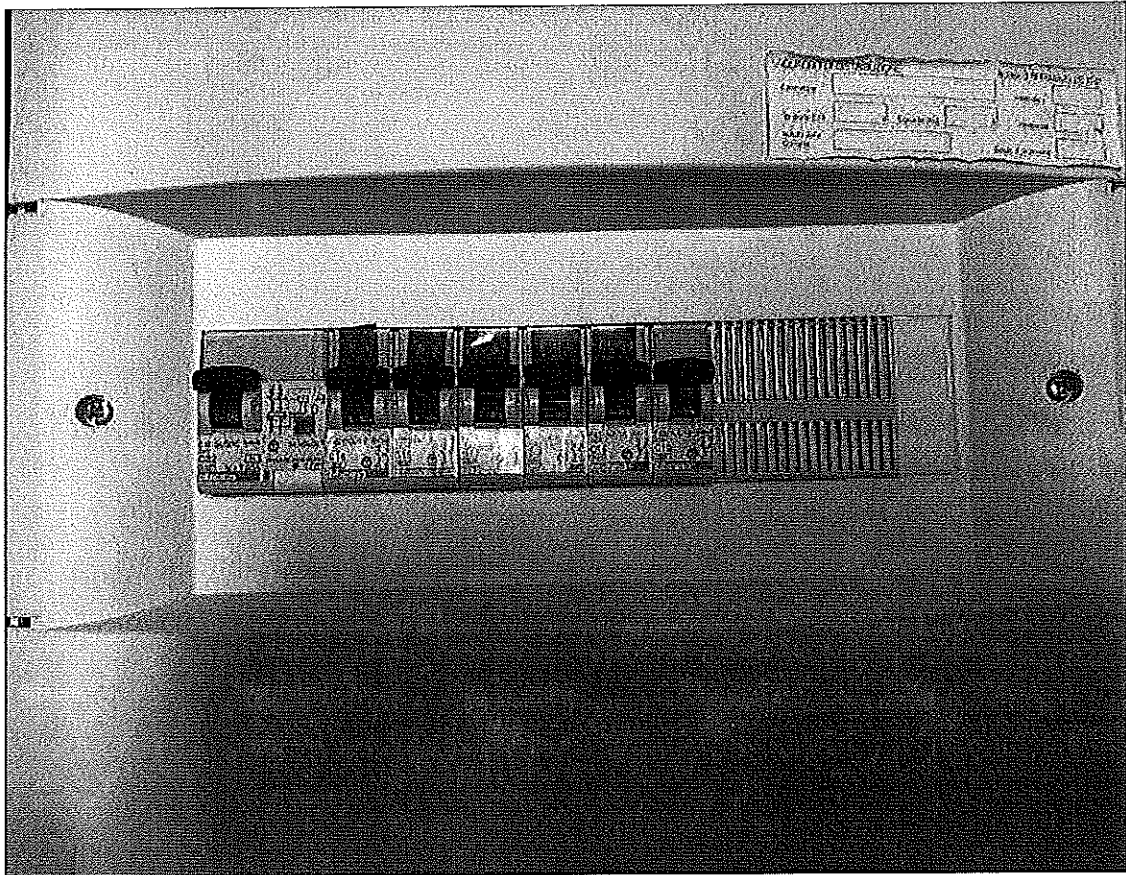


Foto n° 25 – Quadro elettrico ufficio.

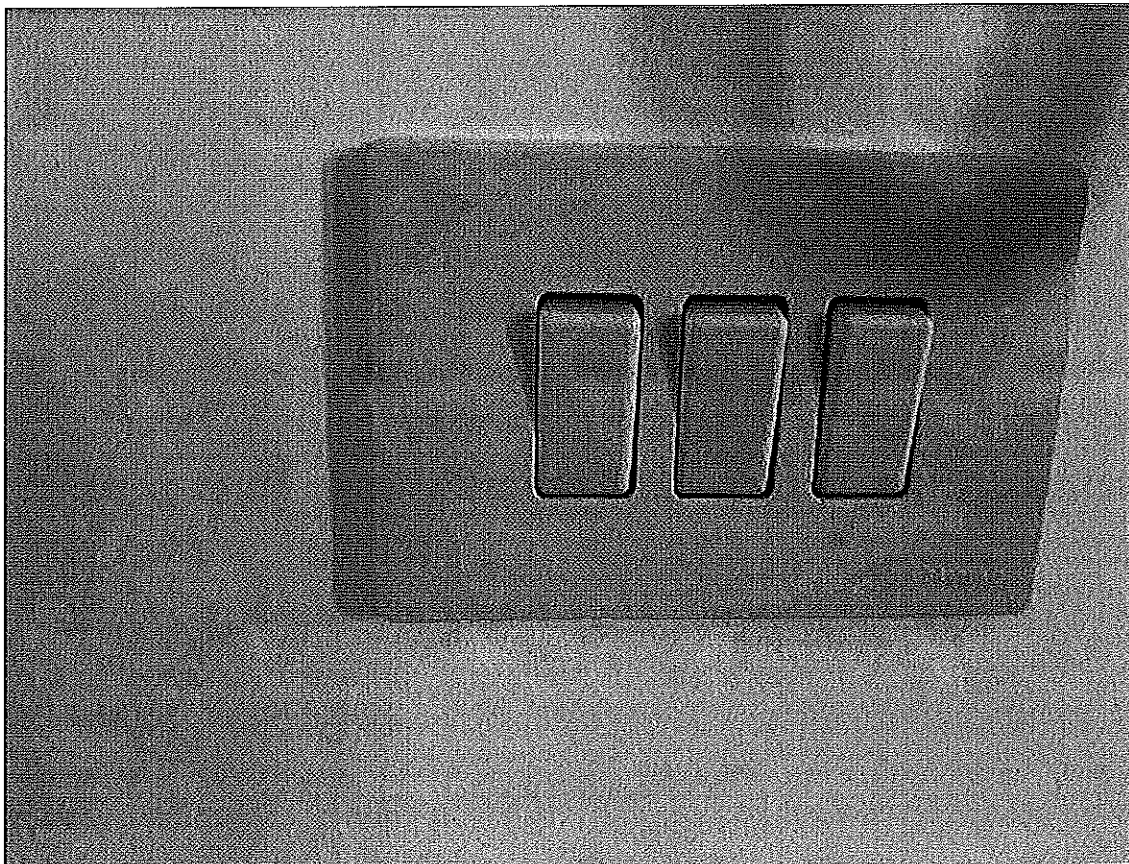


Foto n° 26 – Tipologia interruttori.





