

IN PLANIMETRIA GENERALE LETT. B



Foto 50



Foto 51



Foto 52



Foto 53

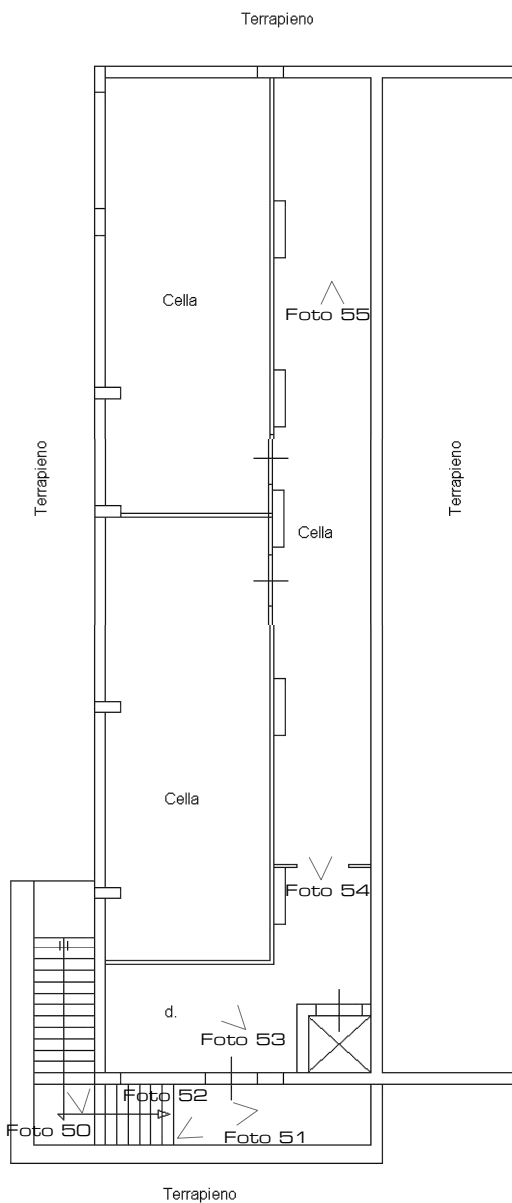


Foto 55

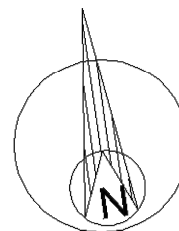


Foto 54



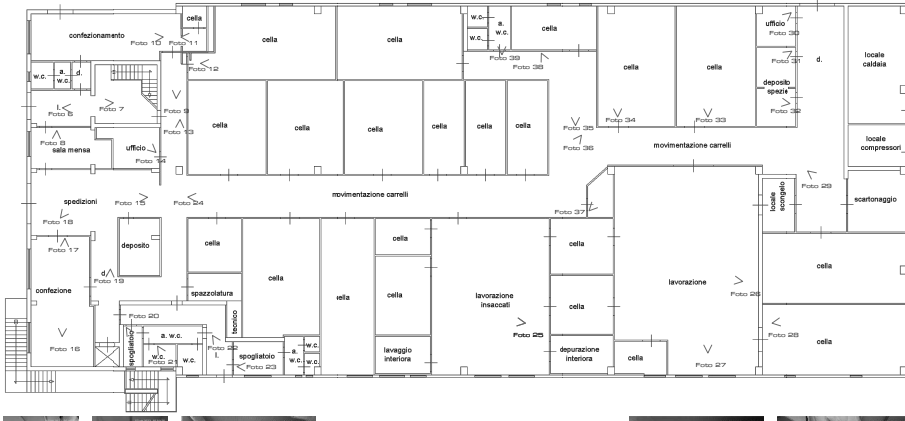
Foto 3

PIANTA PIANO S1
h = mt. 3,30

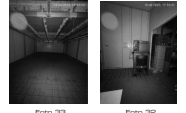




IN PLANIMETRIA GENERALE L.T.T. B



7
Foto 695



PIANTA PIANO TERRA
h = mt. 4,35



Foto 265 e Foto 27: © Studio di Architettura e Urbanistica - Roma

IN PLANIMETRIA GENERALE LETT. A

□ Differmità



Foto 56



Foto 57



Foto 49



Foto 48



Foto 58



Foto 59



Foto 47



Foto 46



Foto 60



Foto 61



Foto 45



Foto 44



Foto 62



Foto 63



Foto 43



Foto 42



Foto 64



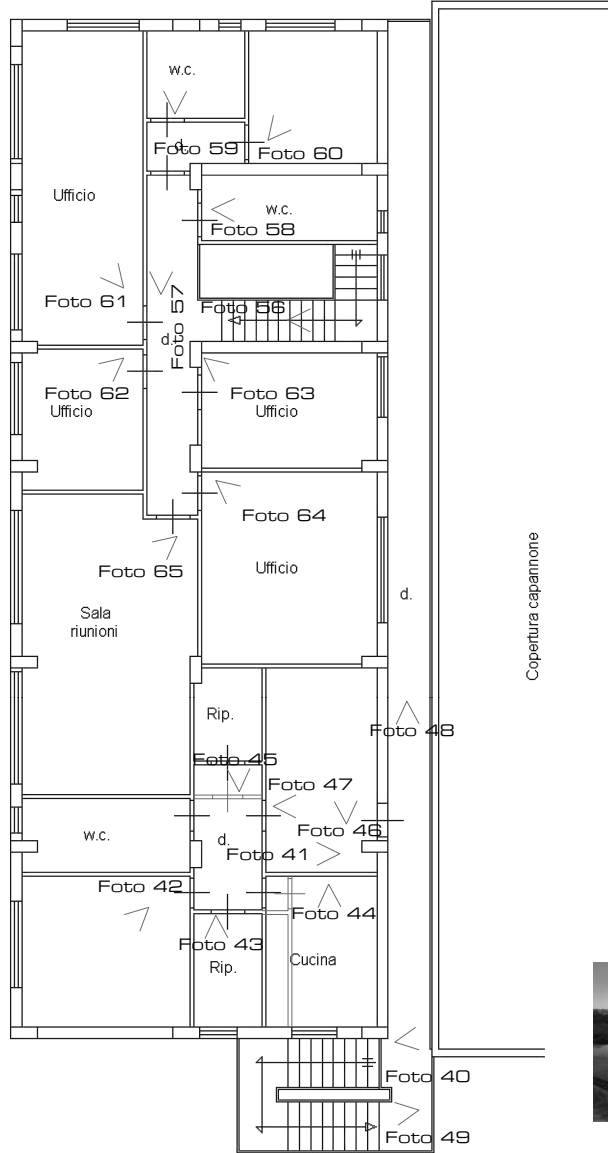
Foto 65



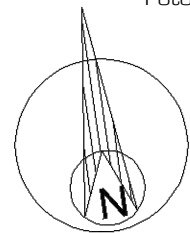
Foto 40



Foto 41



PIANTA PIANO PRIMO h = mt. 3,00



IN PLANIMETRIA GENERALE LETT. F

Foto 67



Foto 67

Foto 69



Foto 68



Foto 69

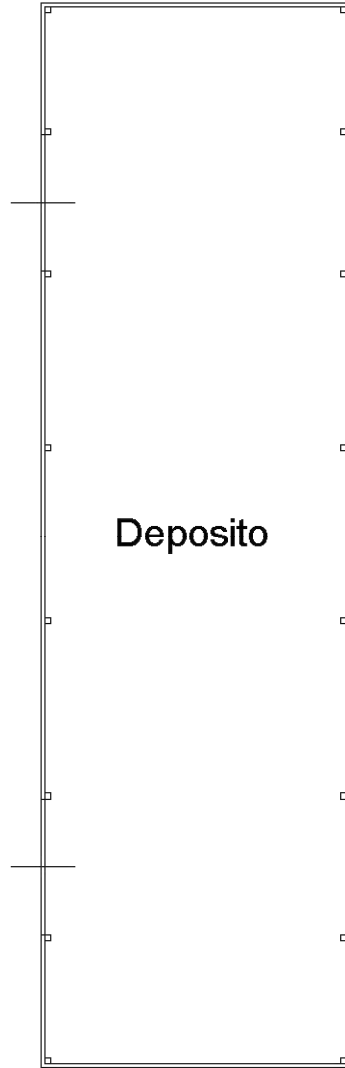


Foto 68

PIANTA PIANO TERRA
hm = mt. 2,75

