

---

# TRIBUNALE DI LUCCA

---

SEZIONE EE.II.

## DOCUMENTAZIONE FOTOGRAFICA ALLEGATA

### LOTTO 1

*Porta di accesso*



*Ingresso*



*Interni ufficio*



*Posti auto scoperti*



*Posti auto coperti*

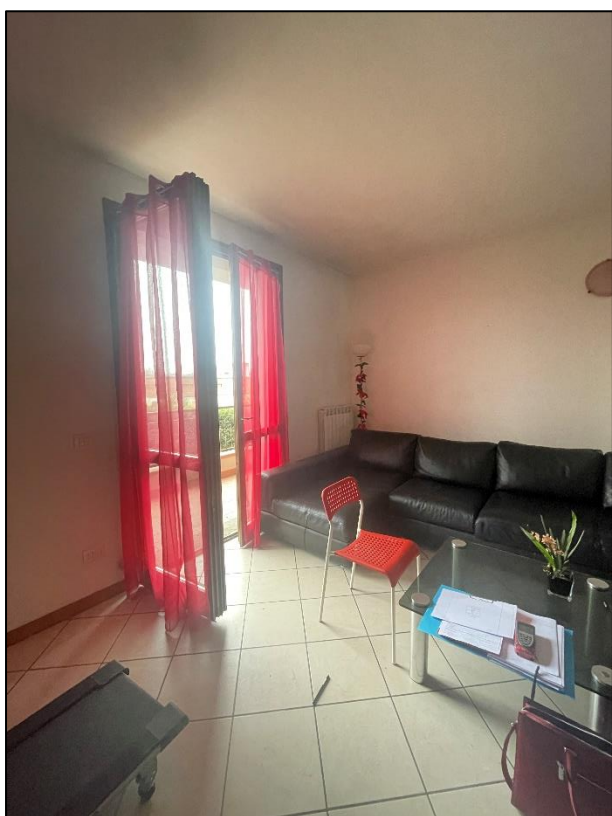


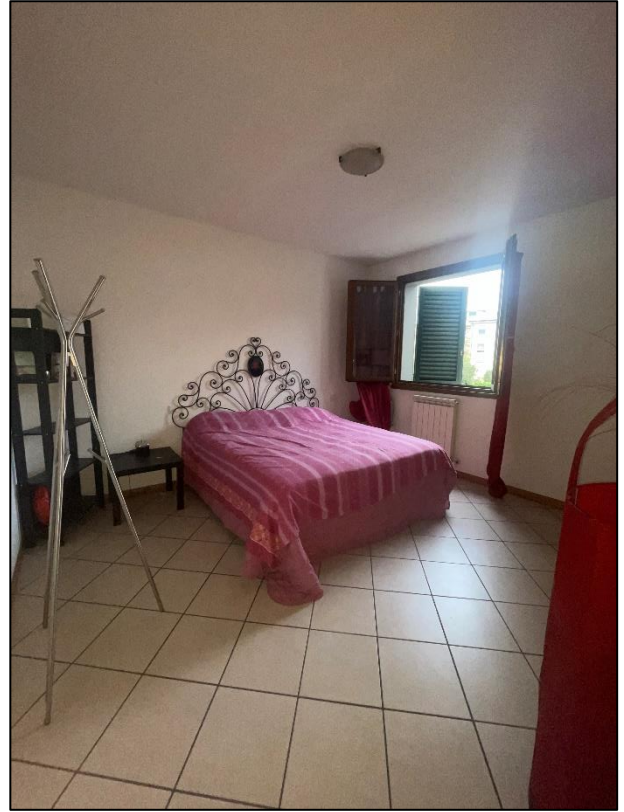
## LOTTO 2

*Porta di accesso*



*Interni e balcone*





*Posti auto coperti*

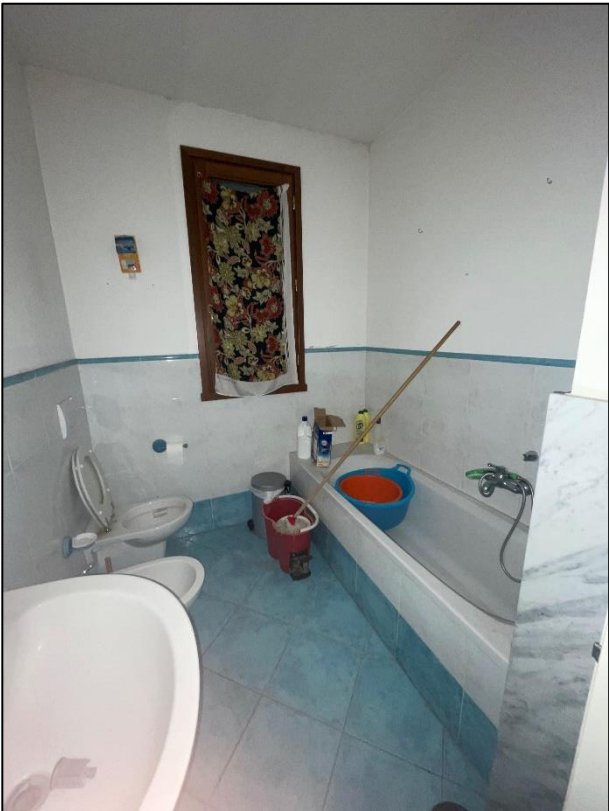


**LOTTO 3**

*Porta di accesso*



*Interni e balcone*



*Posti auto coperti*

