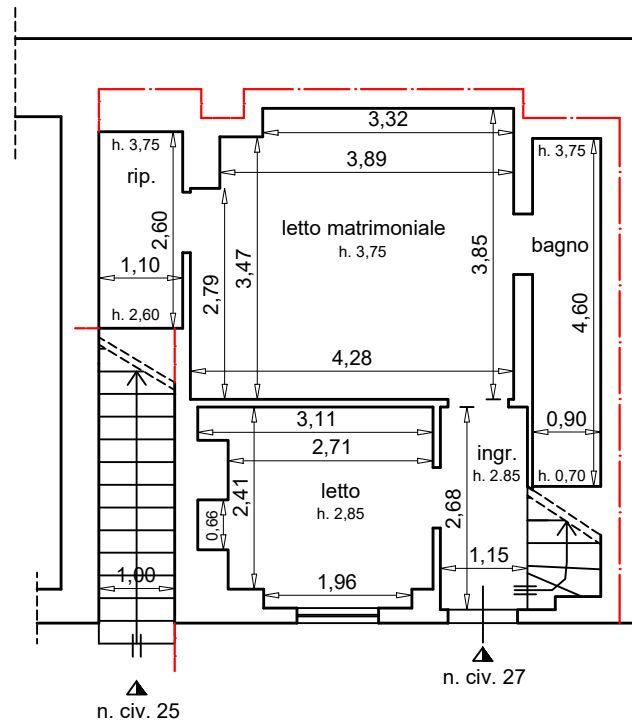


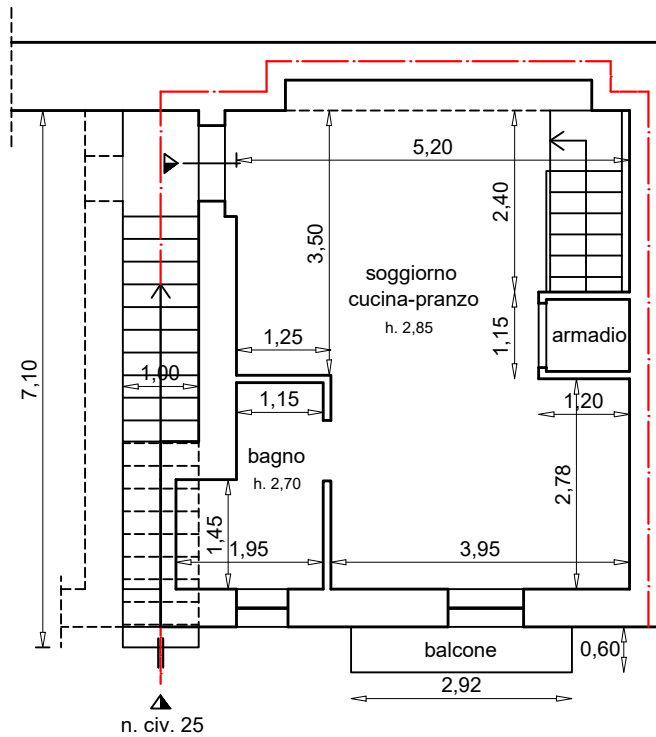
ALLEGATO N. 10

RILIEVO METRICO E PLANIMETRIE

RILIEVO METRICO IMMOBILE IN VIA FIUME NN. 25 e 27 - PISTICCI



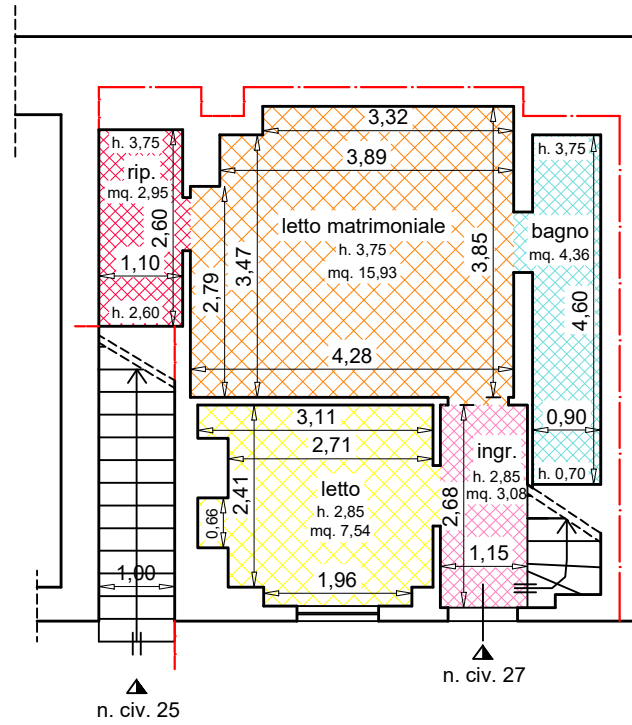
PIANTA PIANO TERRA



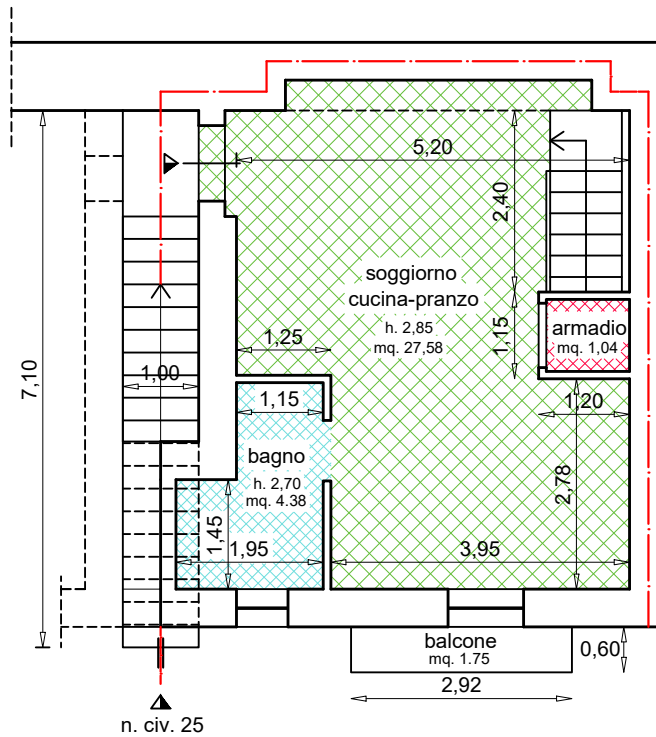
PIANTA PIANO PRIMO

SCALA 1:100

SUPEFICI NETTE IMMOBILE IN VIA FIUME NN. 25 e 27 - PISTICCI



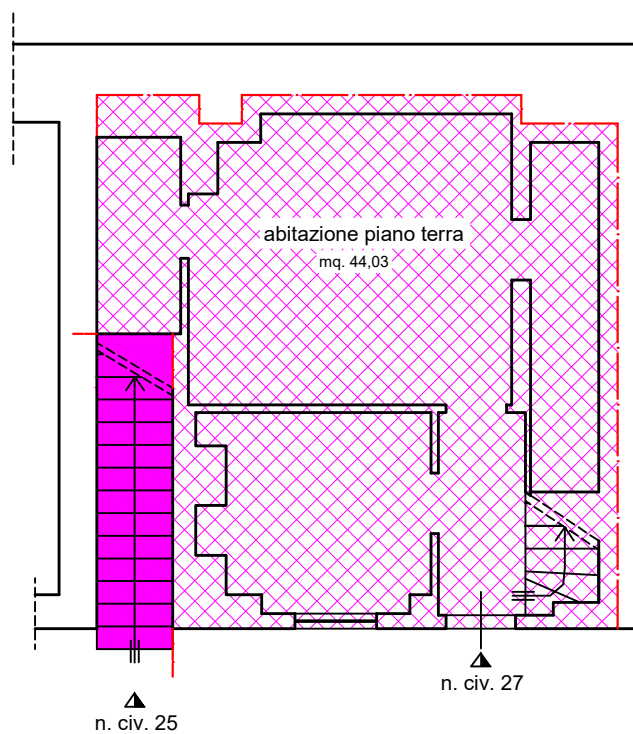
PIANTA PIANO TERRA



PIANTA PIANO PRIMO

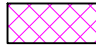



SCALA 1:100

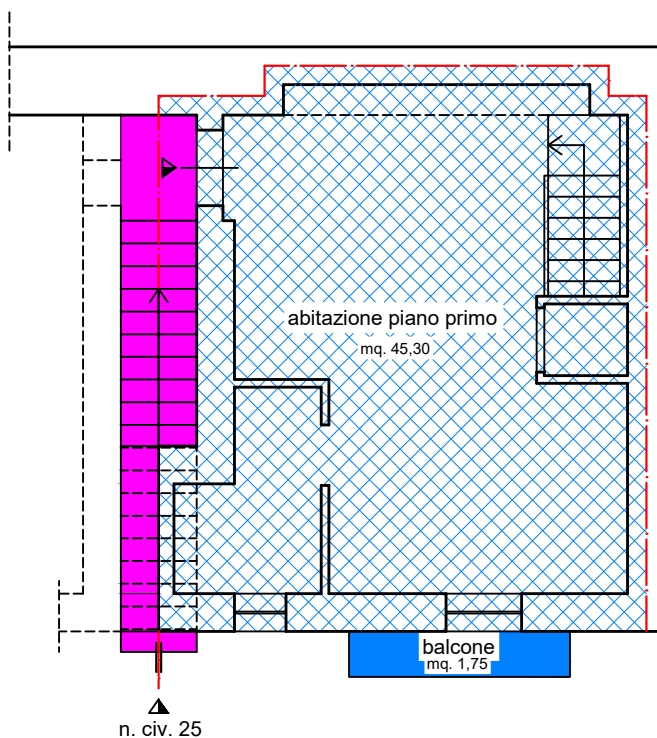
SUPEFICI LORDE IMMOBILE IN VIA FIUME NN. 25 e 27 - PISTICCI



PIANTA PIANO TERRA

Superfici per la stima

-  mq. 44,03
-  mq. $(7,10/2) \times 0,30 = \text{mq. } 1,065$
-  mq. 45,30
-  mq. $1,75 \times 0,30 = \text{mq. } 0,525$



PIANTA PIANO PRIMO

SOMMA SUPERFICIE PER LA STIMA

$$\text{mq. } 44,03 + \text{mq. } 45,30 = \text{mq. } 89,33$$

$$\text{mq. } 1,065 + \text{mq. } 0,525 = \text{mq. } 1,59$$

$$\text{TOTALE SUPERFICIE} \quad \text{mq. } 90,92$$

SCALA 1:100