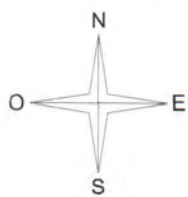
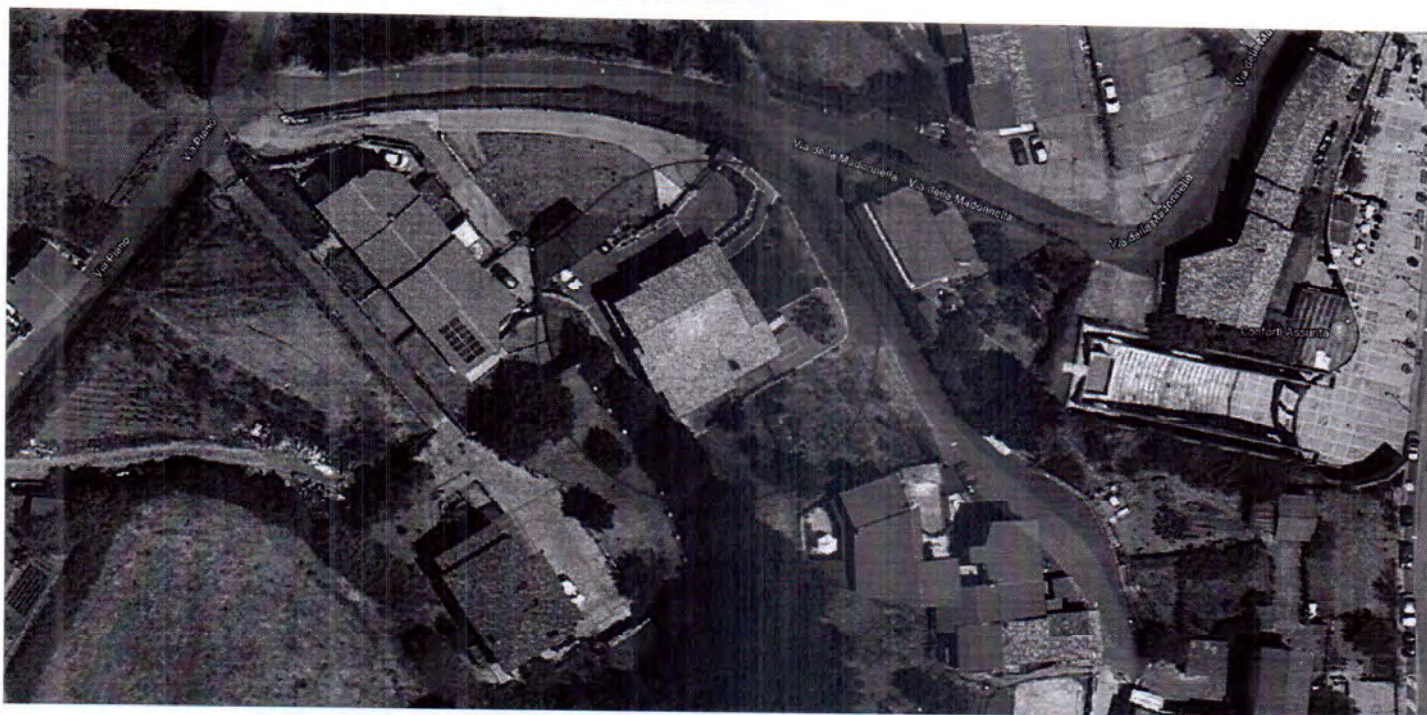


13. Si inseriscono planimetrie e documentazione fotografica:

## Ortofoto



## Direzione foto esterne

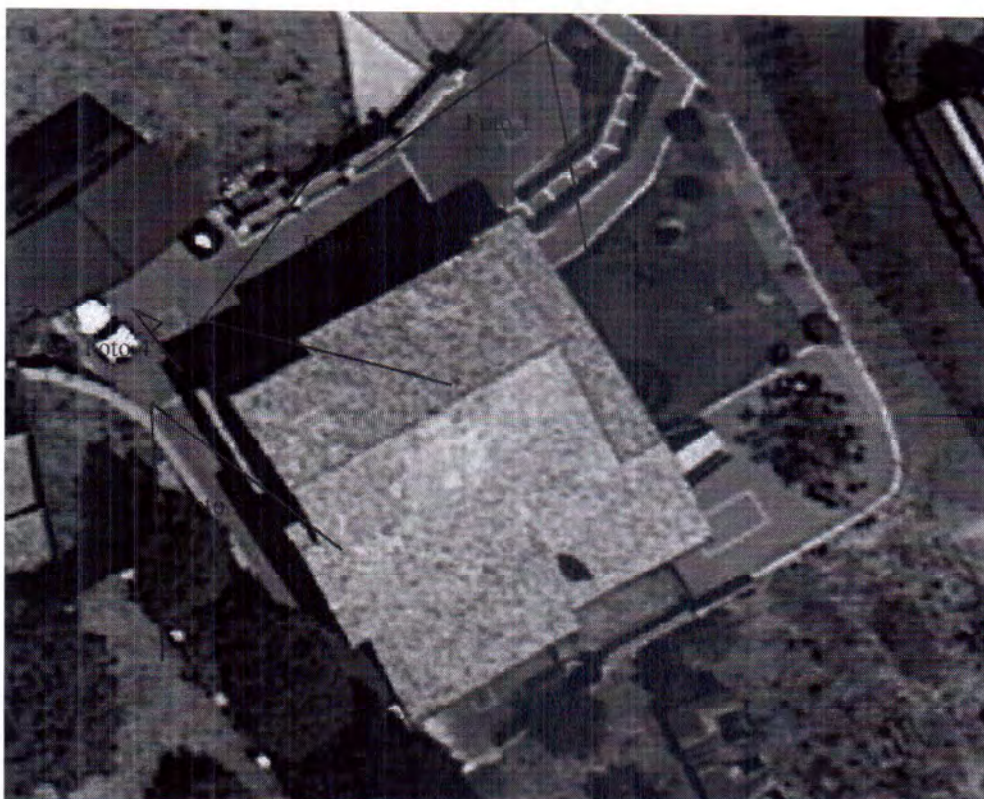




Foto 1



Foto 2

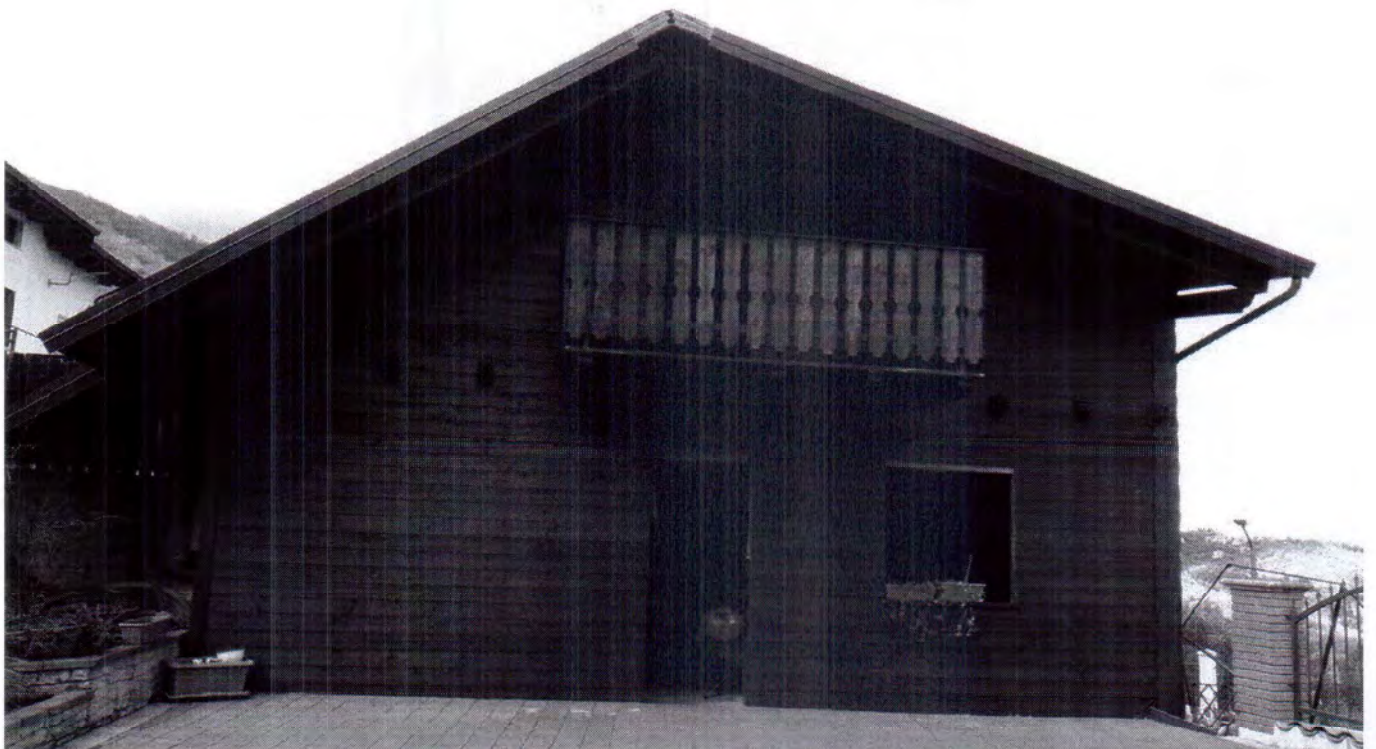




Foto 3



Foto 4





Piano seminterrato  
Superficie lorda 224,00 mq

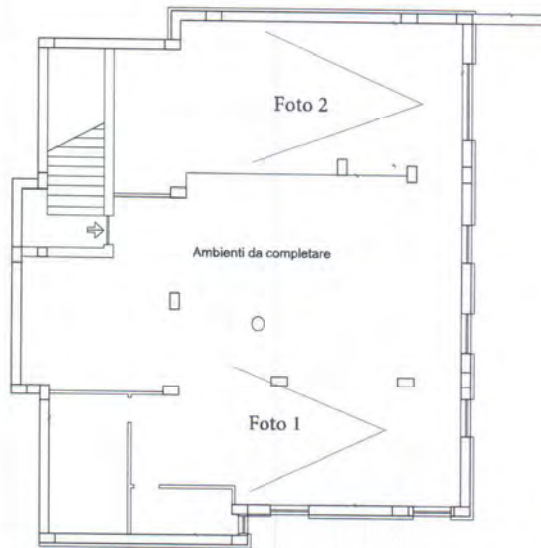


Foto 1



Foto 2





Piano terra  
Superficie lorda 246,67 mq

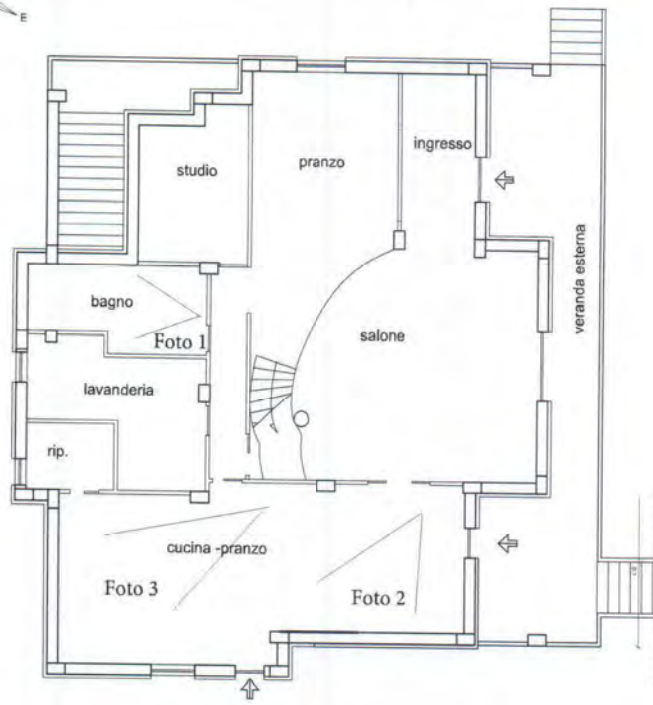


Foto 1

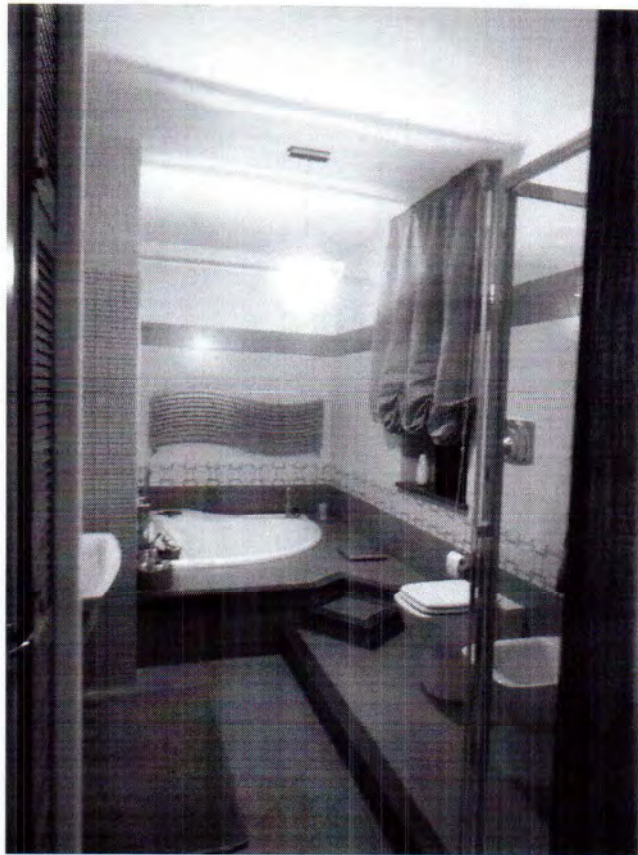


Foto 2



Foto 3





Piano terra  
Superficie lorda 246,67 mq

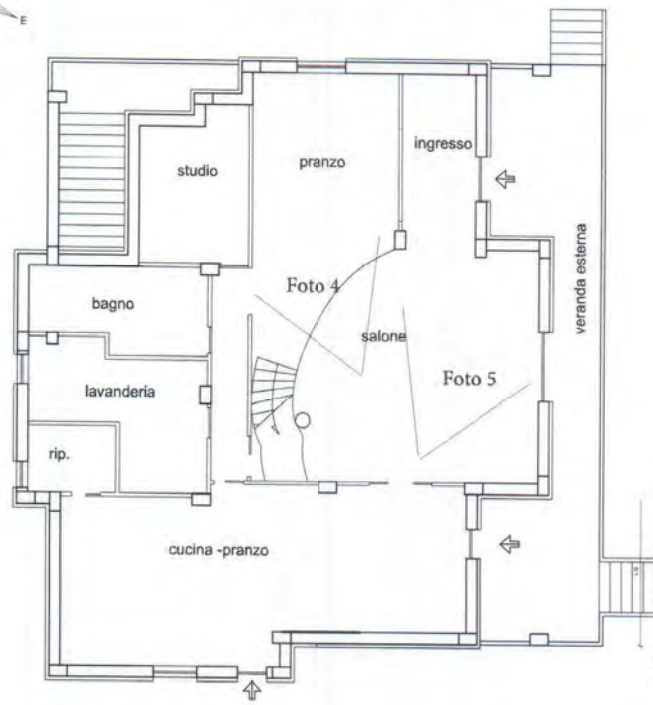


Foto 4



Foto 5





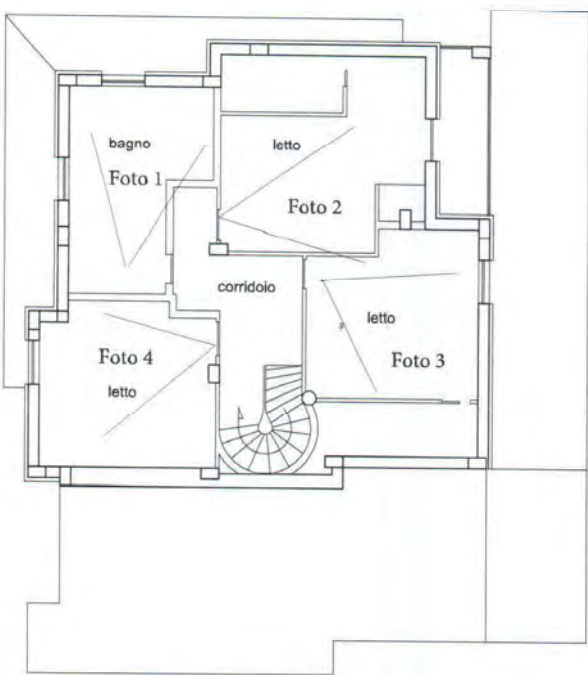


Foto 2



Foto 1



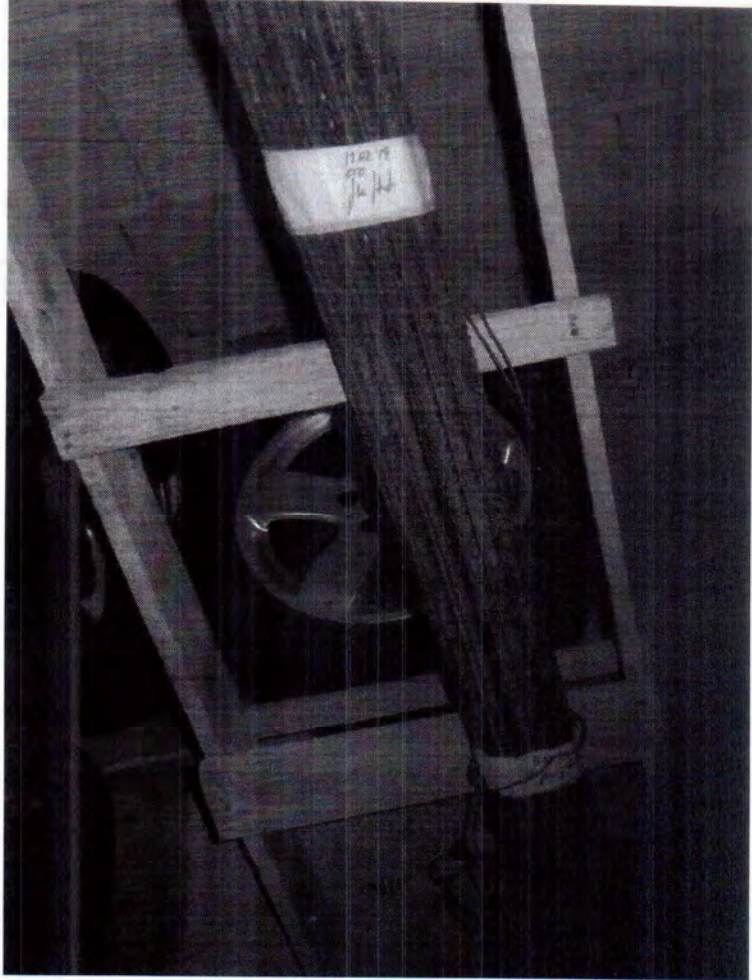
Foto 3



Foto 4







Barre acciaio

Cubetti in CLS

