

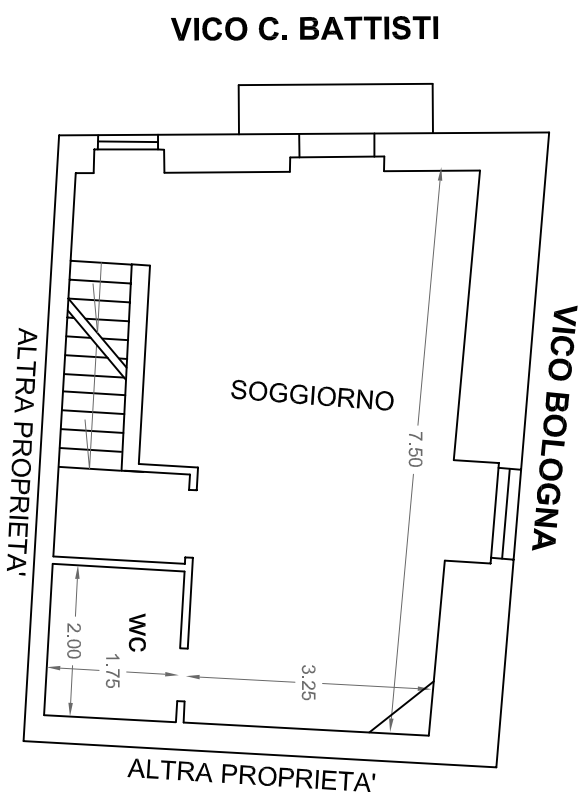
Strada C. BATTISTI n. 11
CASACALENDA (CB)

scala
1 : 100

RILIEVO METRICO

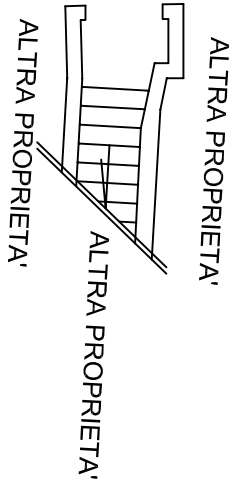
PIANO PRIMO

H = 2,87 mt



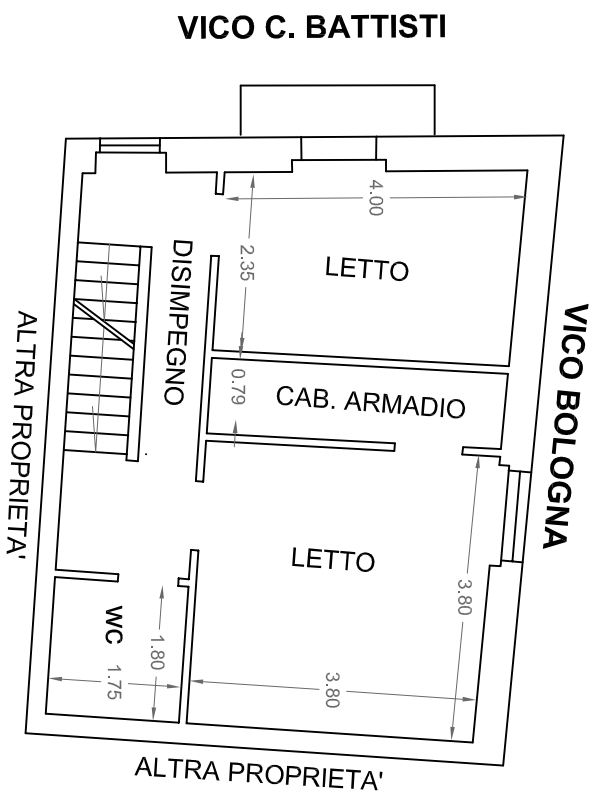
PIANO TERRA

VICO C. BATTISTI



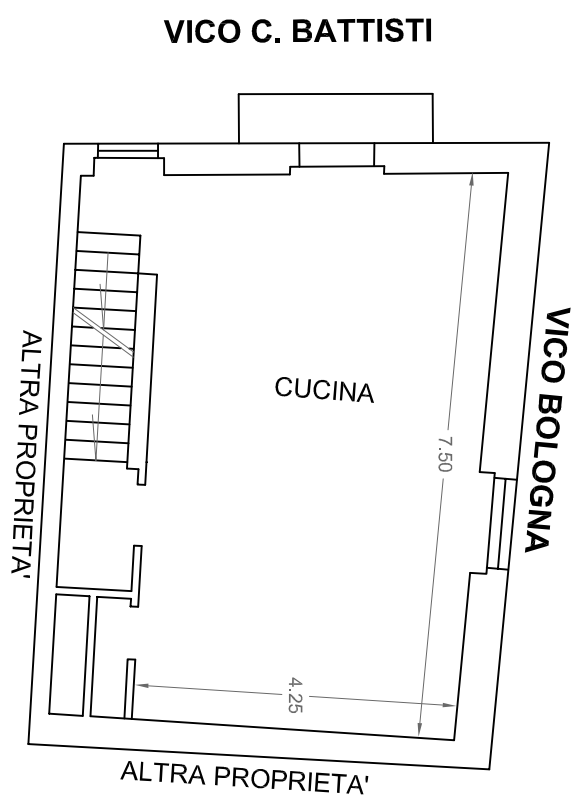
PIANO TERZO

H = 2,88 mt



PIANO SECONDO

H = 2,85 mt



PIANO QUARTO

Hm = 2,23 mt

