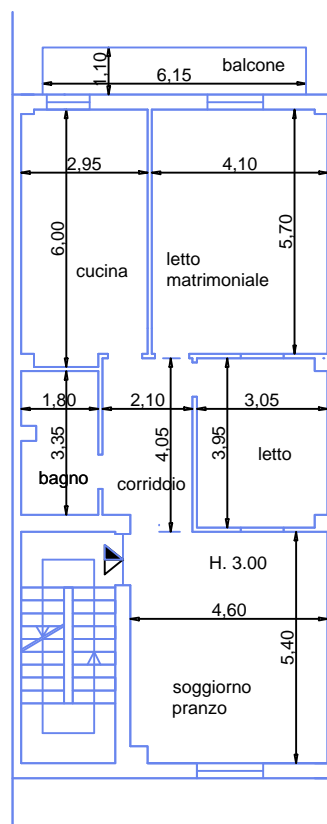


ALLEGATO N. 10

**RILIEVO METRICO E PLANIMETRIE**

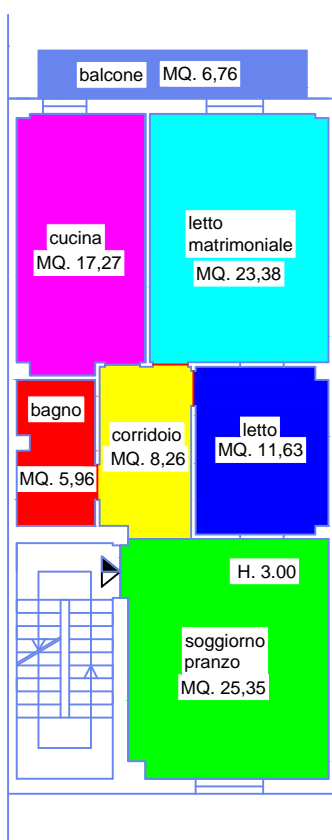
# RILIEVO METRICO IMMOBILE

PIANTA SECONDO PIANO



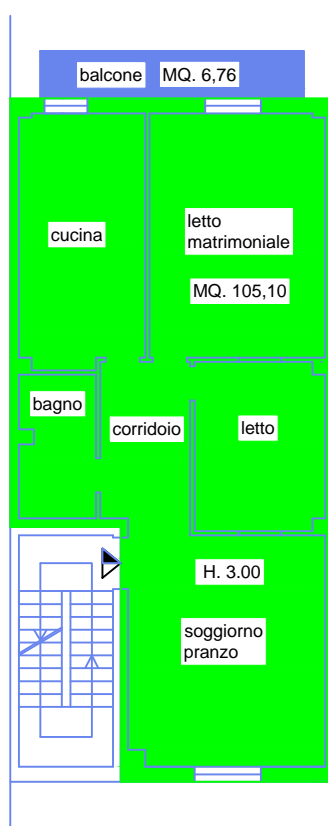
# SUPERFICI NETTE IMMOBILE

## PIANTA SECONDO PIANO




# SUPERFICI LORDE IMMOBILE

## PIANTA SECONDO PIANO



### SUPERFICI PER LA STIMA

 piano secondo mq. 105,10

 balcone (MQ. 6,76 X 0,30) = mq. 2,03

**TOTALE SUPERFICIE** (mq. 105,10 + mq. 2,03) = mq. 107,13

