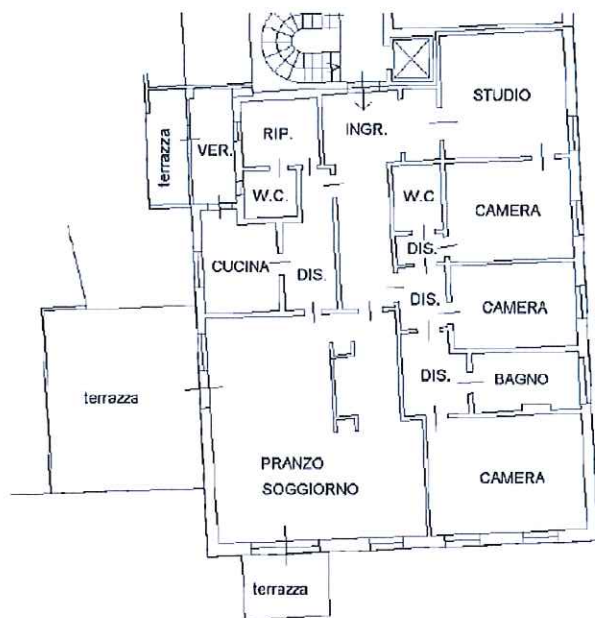




*Inquadramento territoriale*



*estratto planimetria catastale*



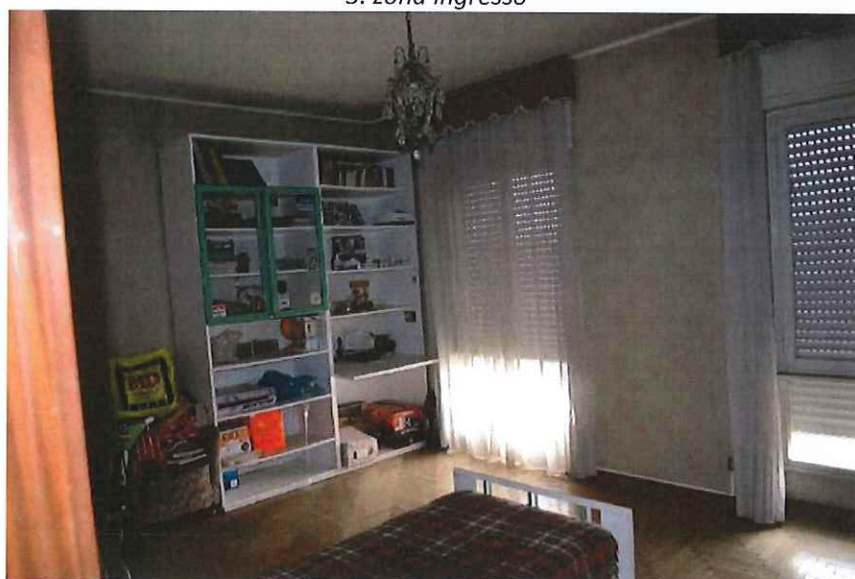
*1. Ingresso area condominiale*



*2. vista scoperto condominiale*



*3. zona ingresso*



*4. camera grande a sud*





*5. bagno sud finestrato*



*6. camera piccola*



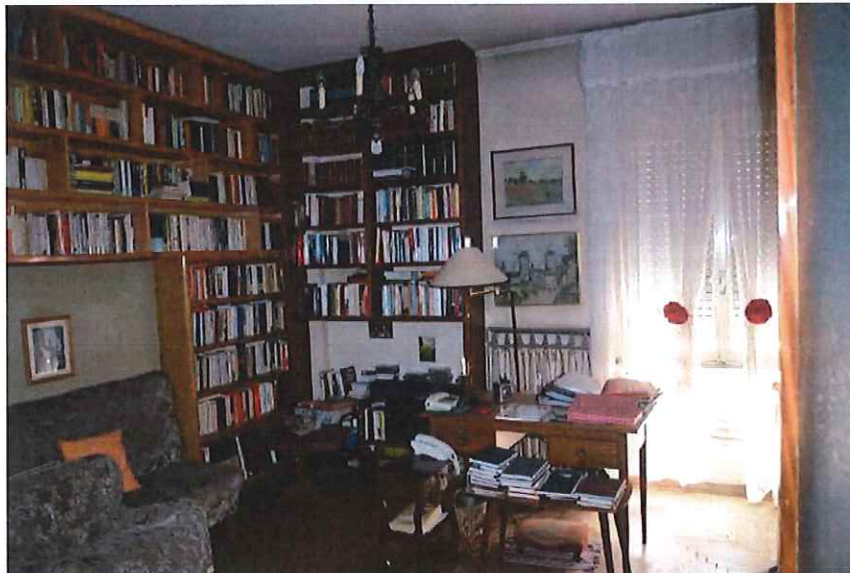
*7. camera piccola*



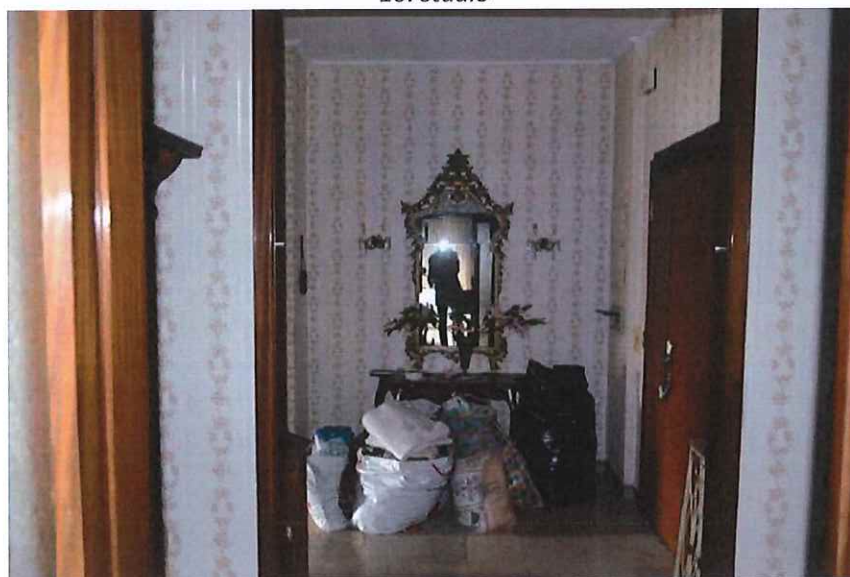
*8. bagno cieco su disimp.*



*9. camera media nord*



*10. studio*



*11. vista ingresso dallo studio*

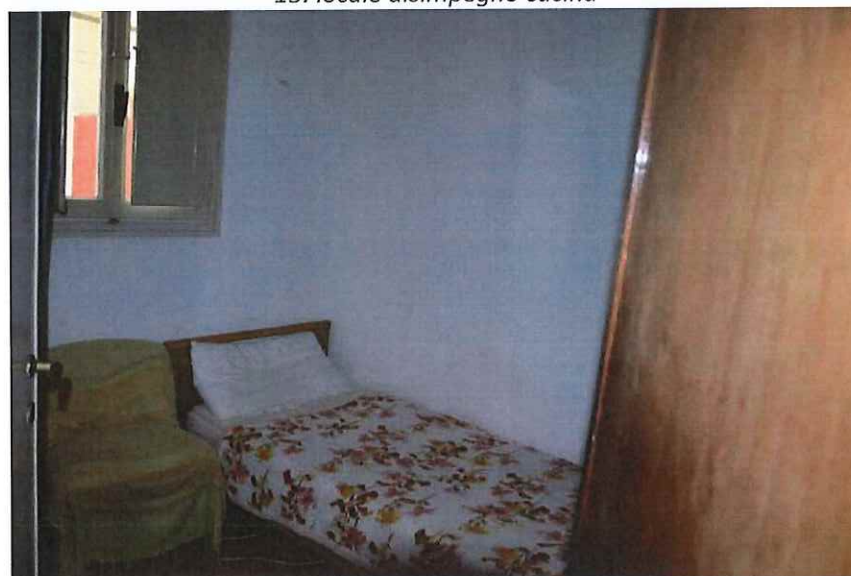




12. vista corridoio da ingresso



13. locale disimpegno cucina



14. locale ripostiglio zona cucina



*15. locale bagno zona cucina*



*16. locale bagno*



*17. locale veranda*



*18. serramento veranda*

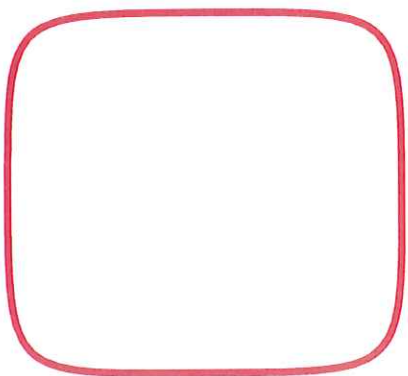




19. locale cucina



20. locale cucina





*21. particolare pavimenti disimpegno cucina e soggiorno-pranzo*



*22. soggiorno pranzo*





*23. corridoio accesso cantine*



*24. porta di accesso cantina*



*25. vista interna cantina*