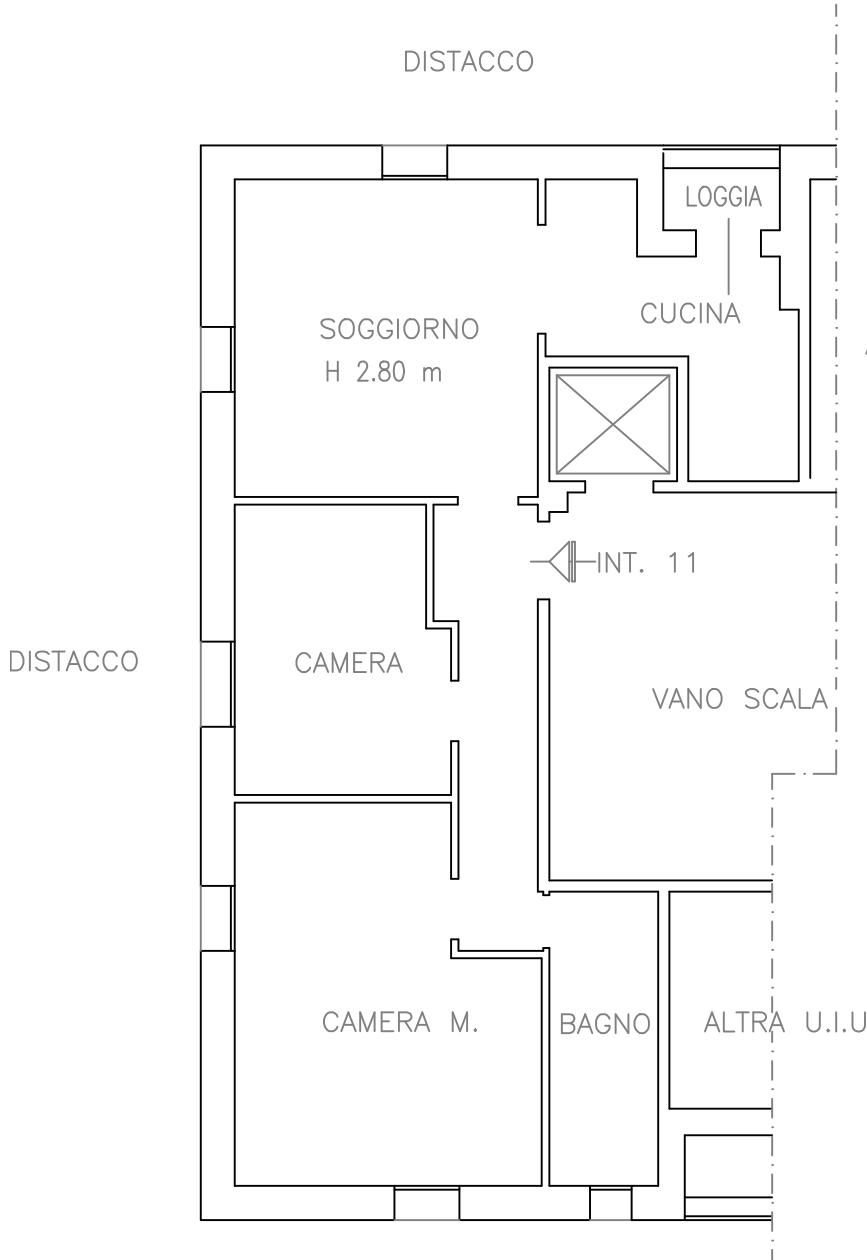


PLANIMETRIA STATO RILEVATO

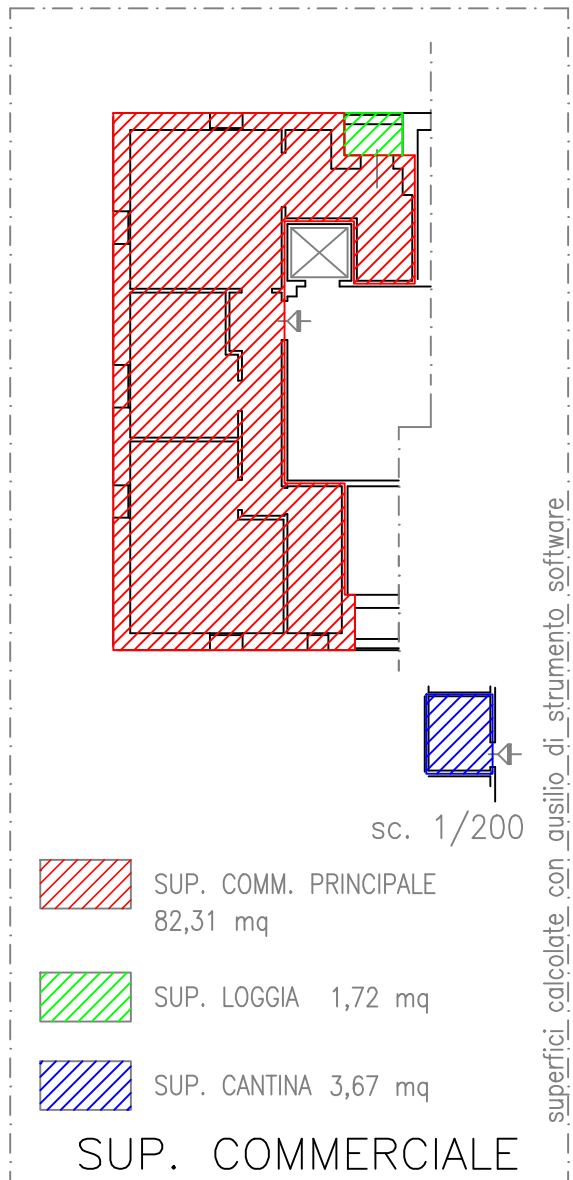
PIANO 4°



ALTRA U.I.U

VANO SCALA

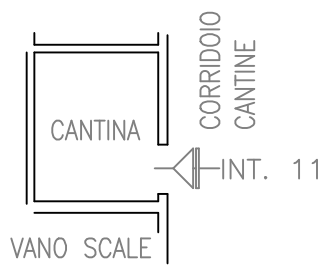
ALTRA U.I.U



- SUP. COMM. PRINCIPALE 82,31 mq
- SUP. LOGGIA 1,72 mq
- SUP. CANTINA 3,67 mq

SUP. COMMERCIALE

PIANO 1S



superfici calcolate con ausilio di strumento software

Ubicazione	Piano	scala	data rilievo
Via Andrea Podesta' 33/11-Genova	4	1/100	19/03/2024



