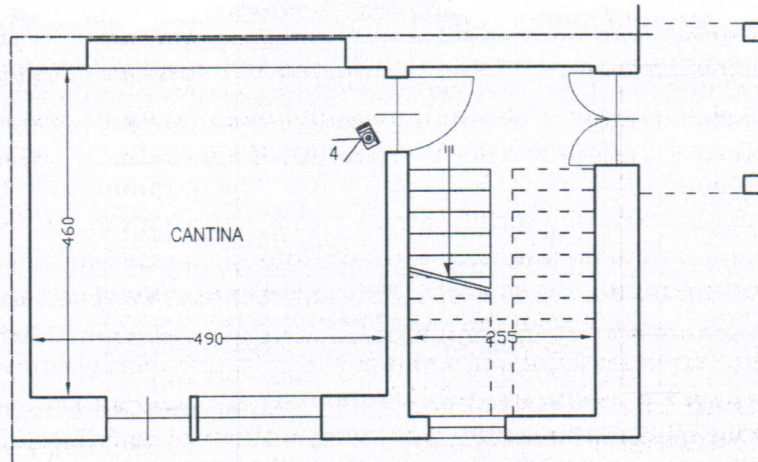


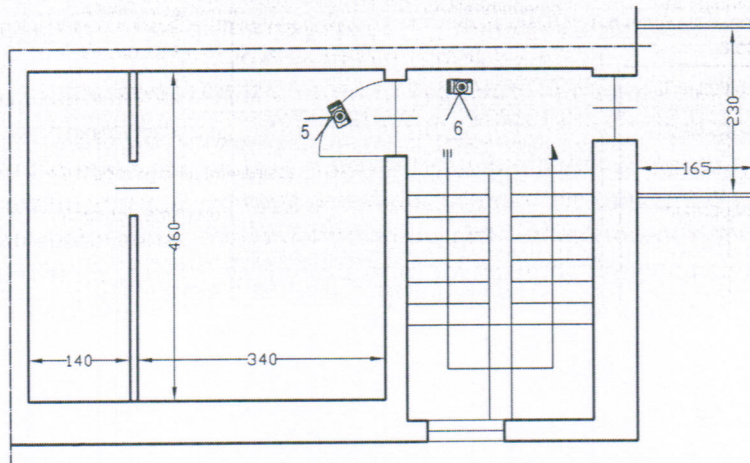
PLANIMETRIA GENERALE

PIANO TERRA


Scala 1:100



PIANO TERRA m. +0,00



PIANO AMMEZZATO m. +2,90

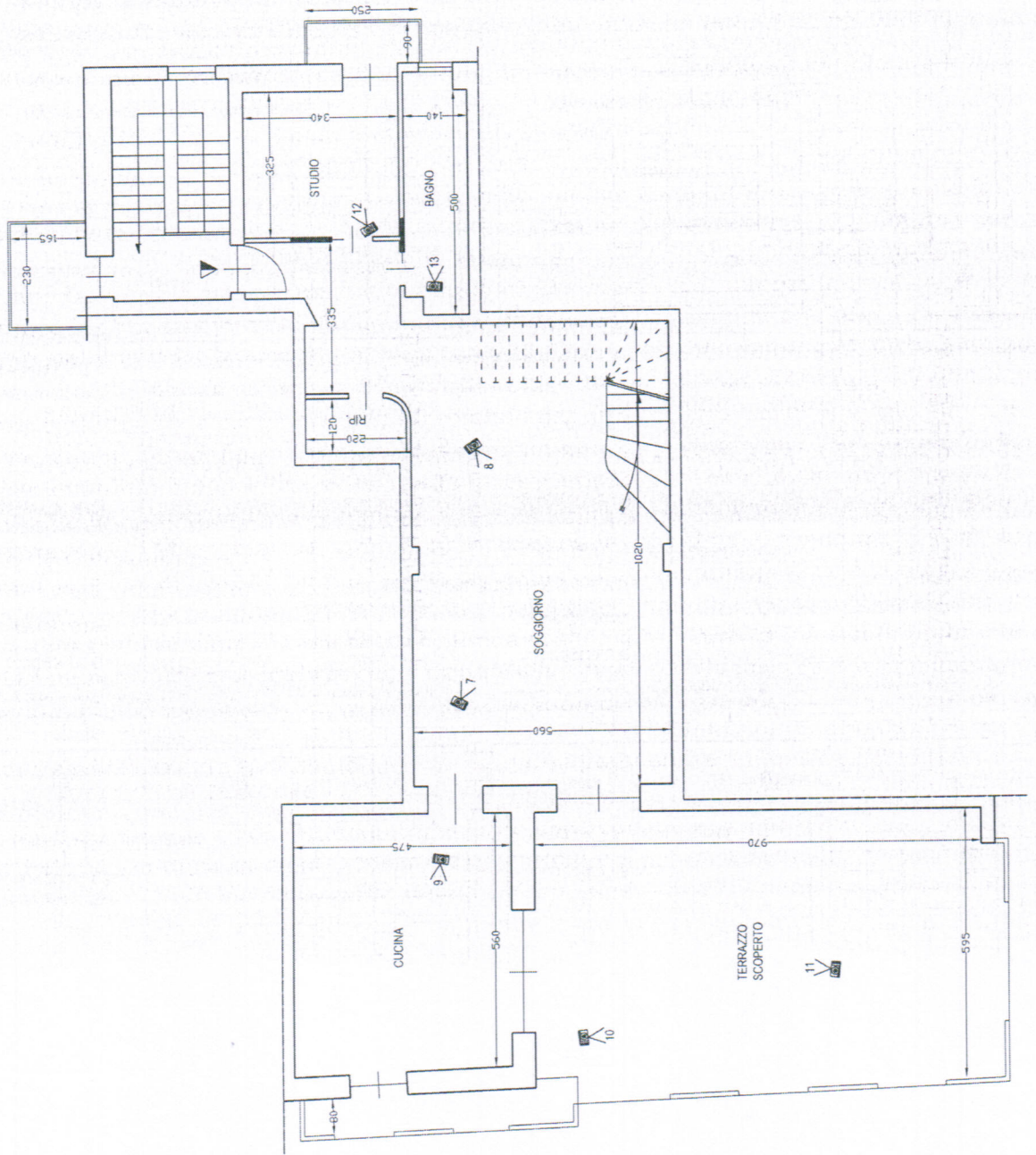
 Cono ottico del rilievo fotografico



PLANIMETRIA GENERALE

PIANO PRIMO

Scala 1:100



Cono ottico del rilievo fotografico



PLANIMETRIA GENERALE
PIANO SECONDO
Scala 1:100

