

Allegato n° 60

Elaborato grafico n°2

Lotto n°2 (lato A)

Comune di Ramacca

Via Papa Paolo VI n°31

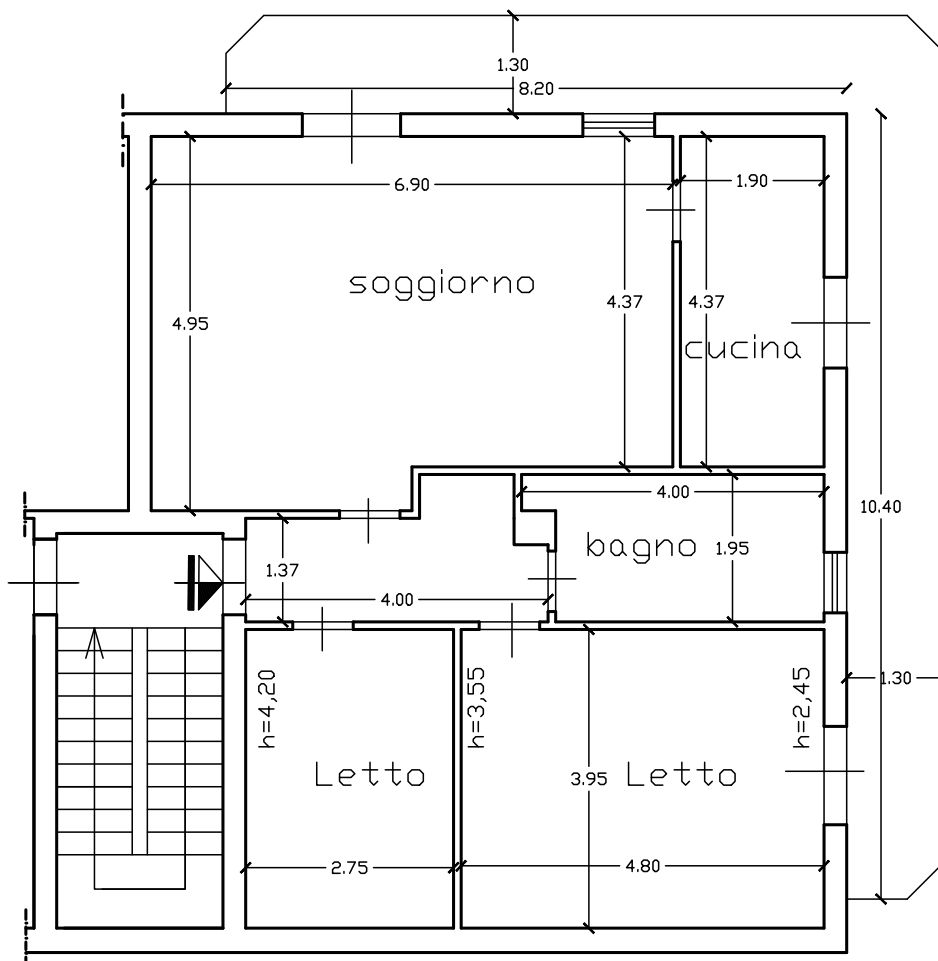
(C.da Cortina s.n.)

Foglio 139 p.lla 870 sub.7

scala 1:100

sup. lorda:mq.95,00.

sup. non resid:mq.25,00.



Piano Secondo