

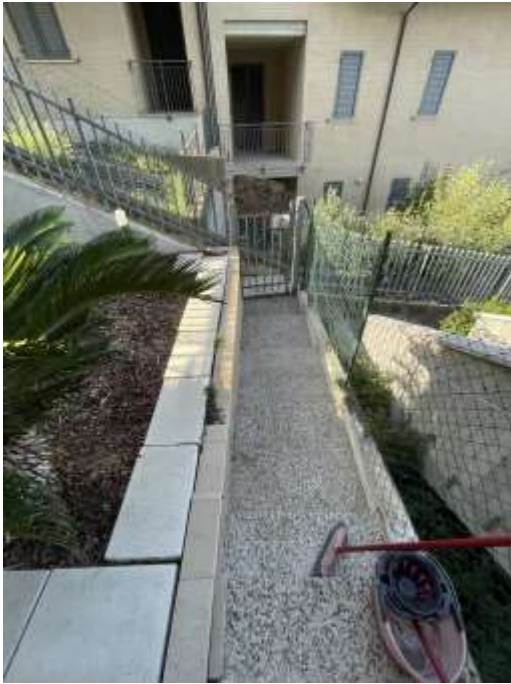
DOCUMENTAZIONE FOTOGRAFICA

E.I. 191-2017

COMUNE DI SANT'ELPIDIO A MARE –VIA TRENINO N. 322



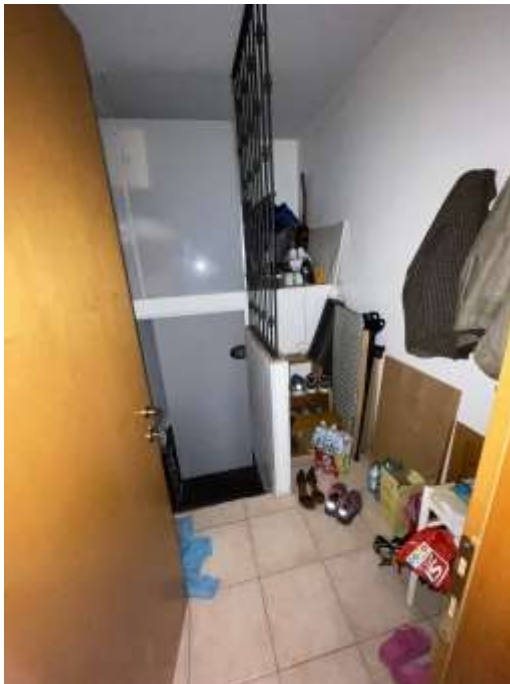
geom. Massimiliano Rocchi
via Michelangelo, 32
63824 Marina di Altidona (FM)
C.F.: RCC MSM 72M 28G 920J
P.I.: 0 1 6 5 6 3 9 0 4 4 8



geom. Massimiliano Rocchi
via Michelangelo, 32
63824 Marina di Altidona (FM)
C.F.: RCC MSM 72M 28G 920J
P.I.: 0 1 6 5 6 3 9 0 4 4 8



geom. Massimiliano Rocchi
via Michelangelo, 32
63824 Marina di Altidona (FM)
C.F.: RCC MSM 72M 28G 920J
P.I.: 0 1 6 5 6 3 9 0 4 4 8



geom. Massimiliano Rocchi
via Michelangelo, 32
63824 Marina di Altidona (FM)
C.F.: RCC MSM 72M 28G 920J
P.I.: 0 1 6 5 6 3 9 0 4 4 8

