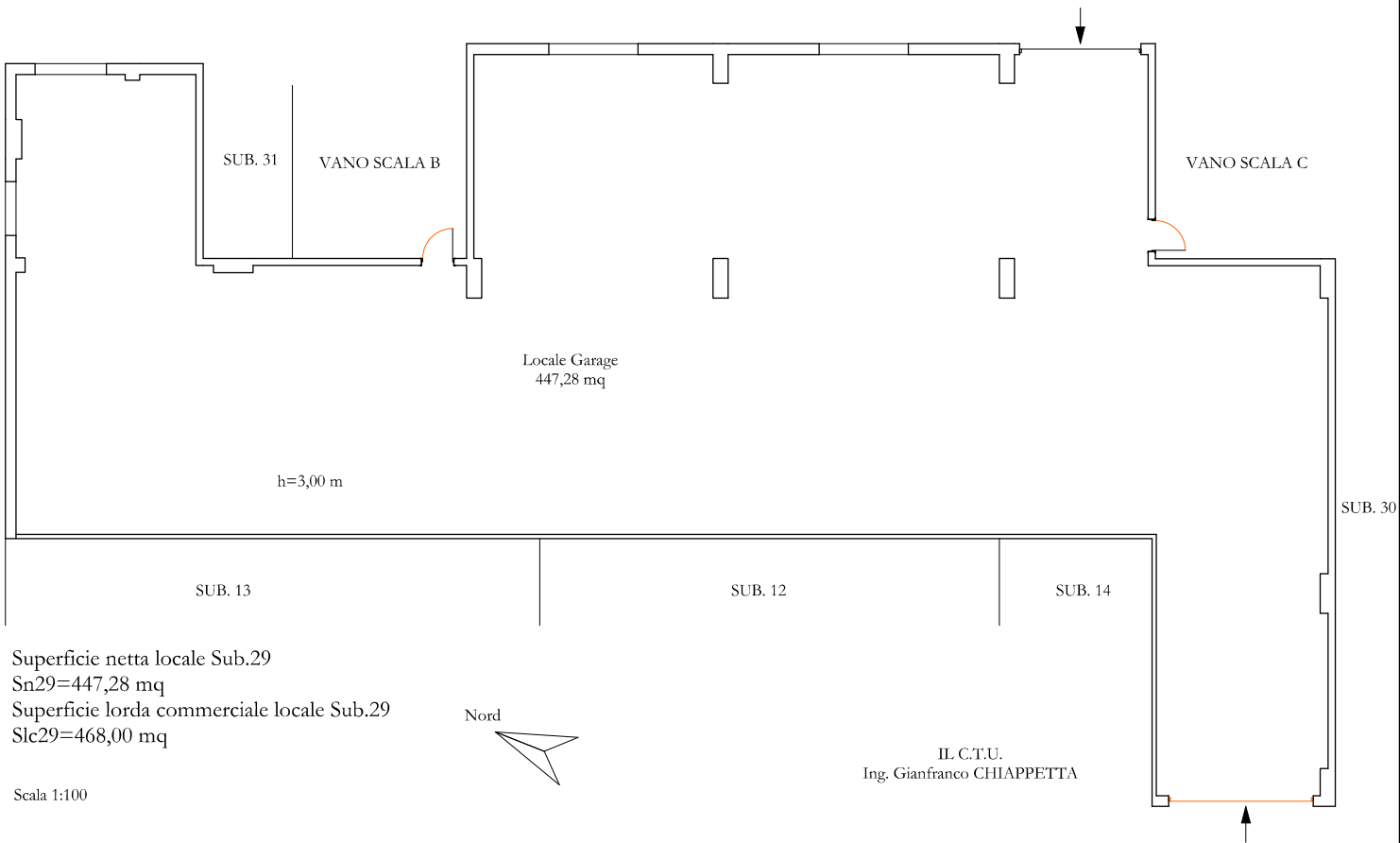


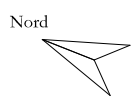
**PLANIMETRIA DA RILIEVO**  
COMUNE DI RENDE-VIA SPAGNA N°50  
N.C.E.U. Fg.29-P.lla 617-Sub.29

All.26a

PIANO SEMINTERRATO



Superficie netta locale Sub.29  
Sn29=447,28 mq  
Superficie lorda commerciale locale Sub.29  
Slc29=468,00 mq



IL C.T.U.  
Ing. Gianfranco CHIAPPETTA

Scala 1:100

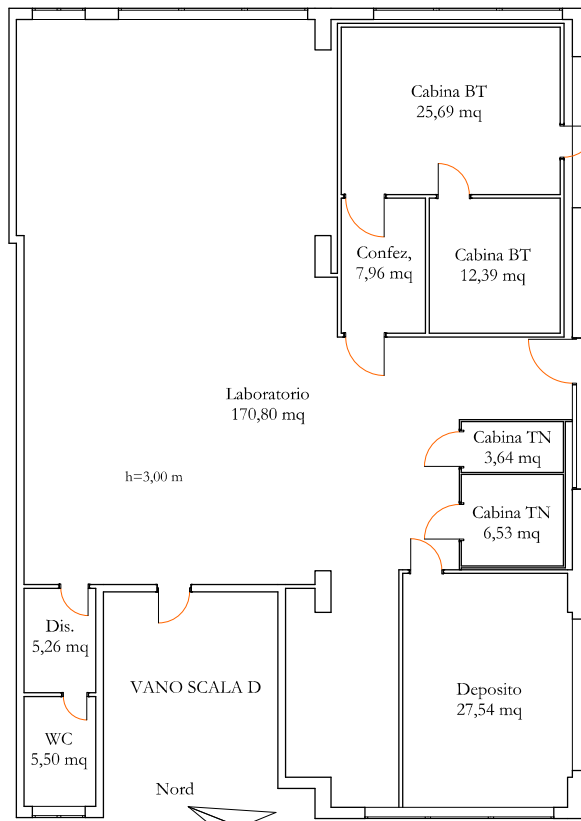
**PLANIMETRIA DA RILIEVO**  
COMUNE DI RENDE-VIA SPAGNA N°50  
N.C.E.U. Fg.29-P.IIa 617-Sub.30

All.26b

CORTE CONDOMINIALE

PIANO SEMINTERRATO

SUB.29



CORTE CONDOMINIALE

Superficie netta locale Sub.30  
Sn30=265,31 mq  
Superficie lorda commerciale locale Sub.30  
Slc30=290,46 mq

Scala 1:100

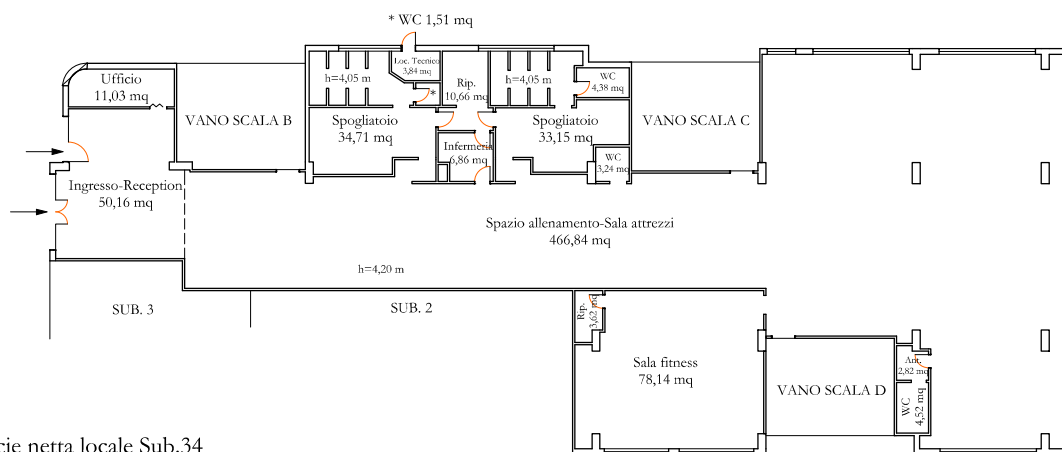
CORTE CONDOMINIALE

IL C.T.U.  
Ing. Gianfranco CHIAPPEITA

**PLANIMETRIA DA RILIEVO**  
COMUNE DI RENDE-VIA SPAGNA N°50  
N.C.E.U. Fg.29-P.la 617-Sub.34

All.26c

PIANO TERRA



Superficie netta locale Sub.34  
Sn34 = 711,64 mq;  
Superficie lorda commerciale locale Sub.34  
Slc34 = 766,63 mq

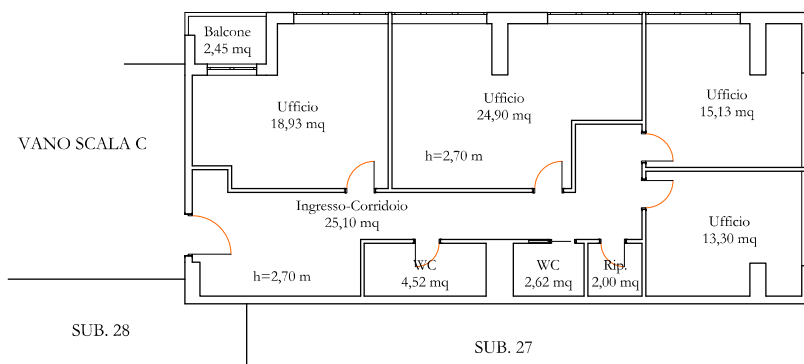
Scala 1:200

IL C.T.U.  
Ing. Gianfranco CHIAPPETTA

**PLANIMETRIA DA RILIEVO**  
COMUNE DI RENDE-VIA SPAGNA N°50  
N.C.E.U. Fg.29-P.lla 617-Sub.26

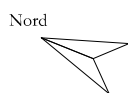
All.26d

PIANO SECONDO



Superficie netta locale Sub.26  
Sn26=106,50 mq  
Superficie lorda commerciale locale Sub.26  
Slc26=122,89 mq  
Superficie balcone Sub.26  
Sb26=2,45 mq

Scala 1:100



IL C.T.U.  
Ing. Gianfranco CHIAPPETTA

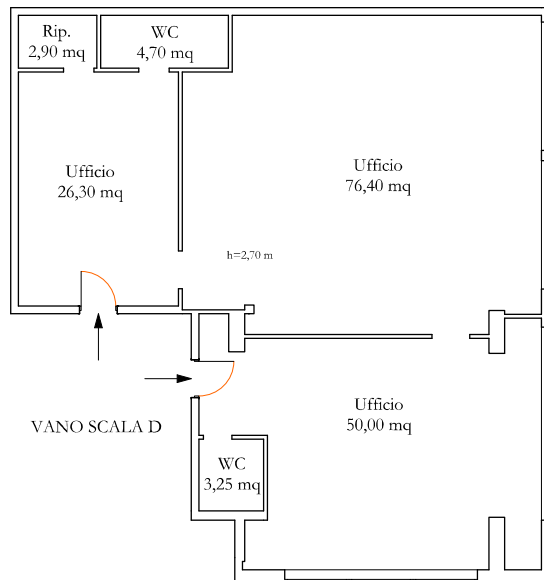
**PLANIMETRIA DA RILIEVO**  
COMUNE DI RENDE-VIA SPAGNA N°50  
N.C.E.U. Fg.29-P.la 617-Sub.27

All.26e

PIANO SECONDO

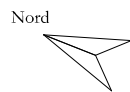
SUB. 26

SUB. 28



Superficie netta locale Sub.27  
Sn27=163,55 mq  
Superficie lorda commerciale locale Sub.27  
Slc27=178,43 mq

Scala 1:100

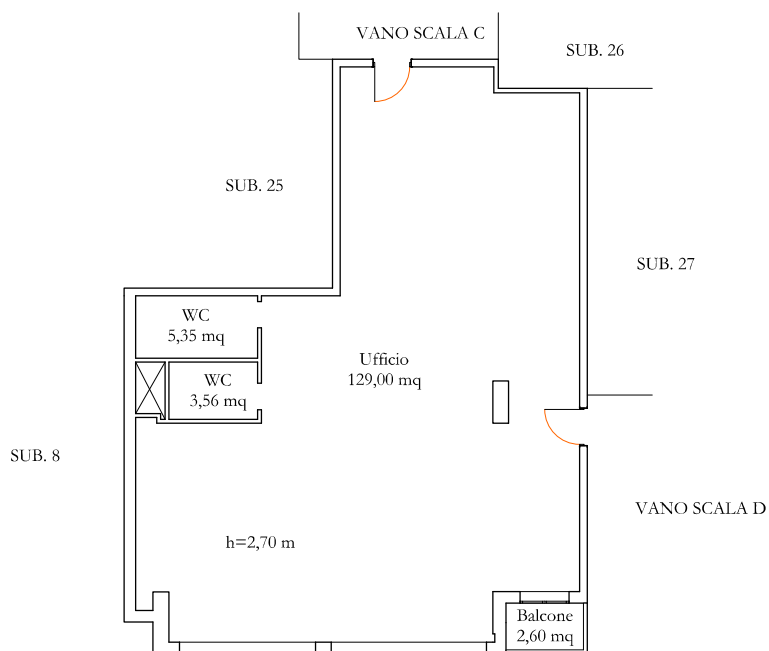


IL C.T.U.  
Ing. Gianfranco CHIAPPETTA

**PLANIMETRIA DA RILIEVO**  
COMUNE DI RENDE-VIA SPAGNA N°50  
N.C.E.U. Fg.29-P.la 617-Sub.28

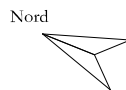
All.26f

PIANO SECONDO



Superficie netta locale Sub.28  
Sn28=137,91 mq  
Superficie lorda commerciale locale Sub.28  
Slc28=149,49 mq  
Superficie balcone Sub.28  
Sb28=2,60 mq

Scala 1:100

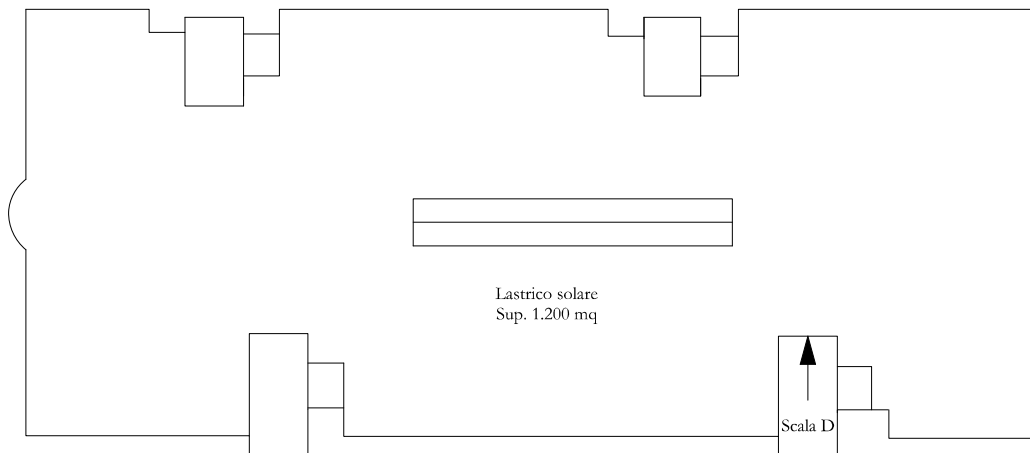


IL C.T.U.  
Ing. Gianfranco CHIAPPETTA

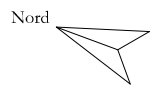
**PLANIMETRIA DA RILIEVO**  
COMUNE DI RENDE-VIA SPAGNA N°50  
N.C.E.U. Fg.29-P.la 617-Sub.10

All.26g

PIANO TERZO



Superficie netta locale Sub.10  
Sn10 = 1200,00 mq;  
Superficie lorda commerciale locale Sub.34  
Slc10 = 1200,00 mq



IL C.T.U.  
Ing. Gianfranco CHIAPPETTA

Scala 1:200