

PIANTA PLANIMETRICA "FABBRICATO URBANO"

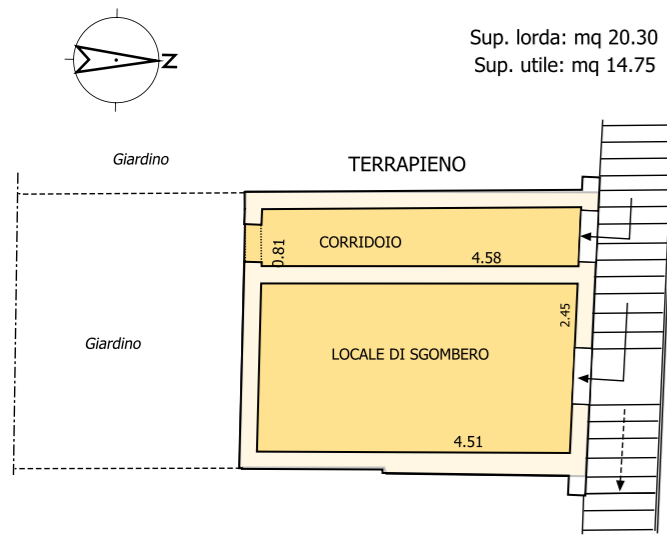
IN ALCAMO - CONTRADA CANALOTTO VIA DEI PAPAVERI snc

IL TECNICO

Geom. Giuseppe NAPOLI

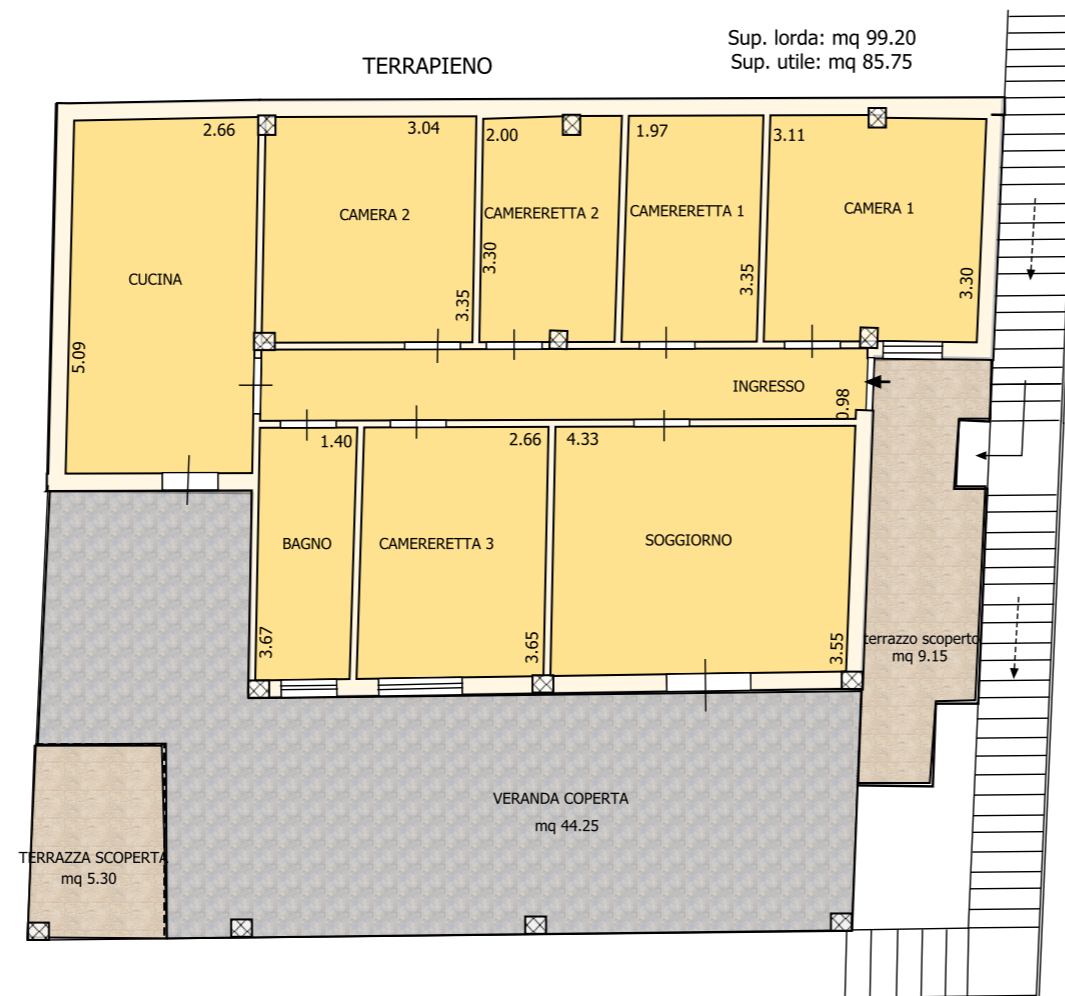
PIANTA PIANO PRIMO

Sup. lorda: mq 20.30
Sup. utile: mq 14.75



PIANTA PIANO TERRA

Sup. lorda: mq 99.20
Sup. utile: mq 85.75



PIANTA PIANO SEMINTERRATO

