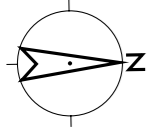


# PIANTA PLANIMETRICA "FABBRICATO URBANO"

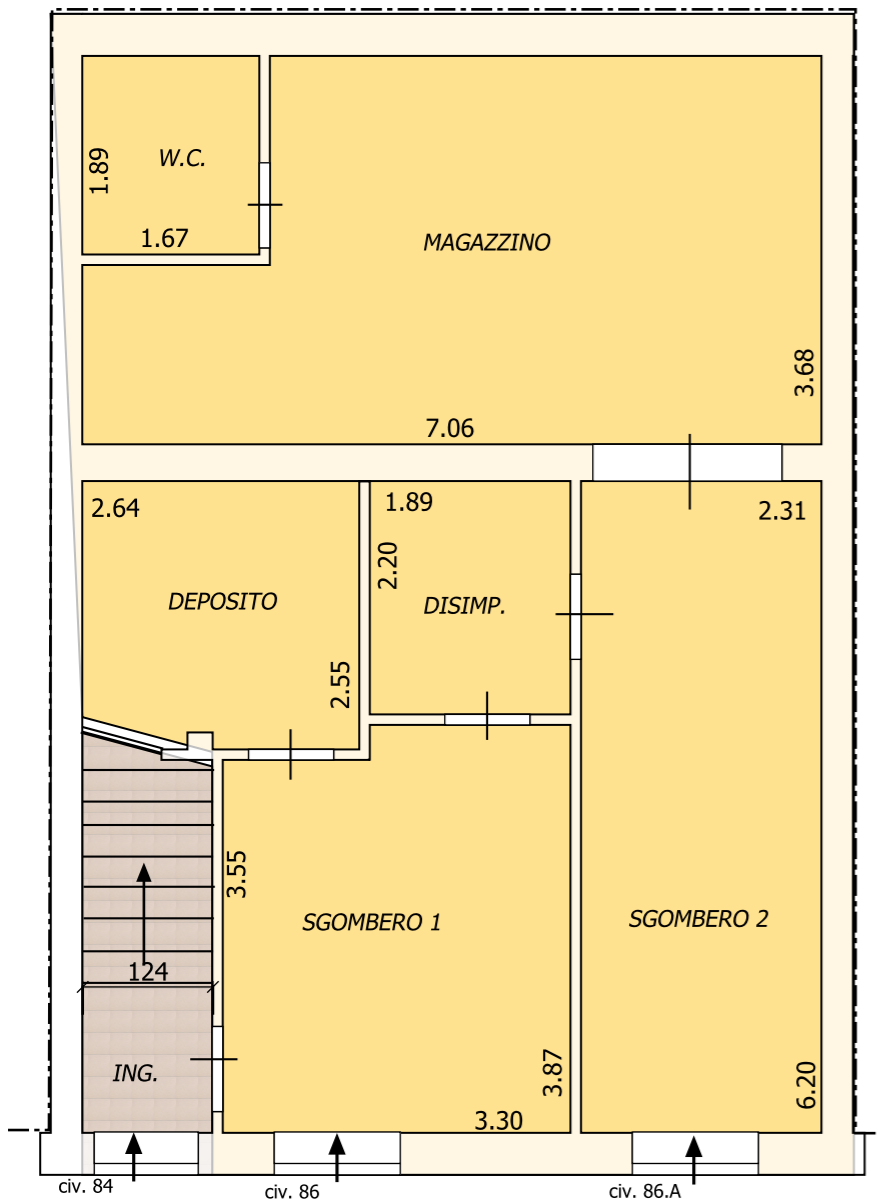
SITO IN ALCAMO - VIA MILAZZO nn. 84-86-86A

IL TECNICO  
Geom. Giuseppe NAPOLI



Sup. lorda: mq 78,45  
Sup. utile: mq 63,40  
Ing.- Scala: mq 5,00

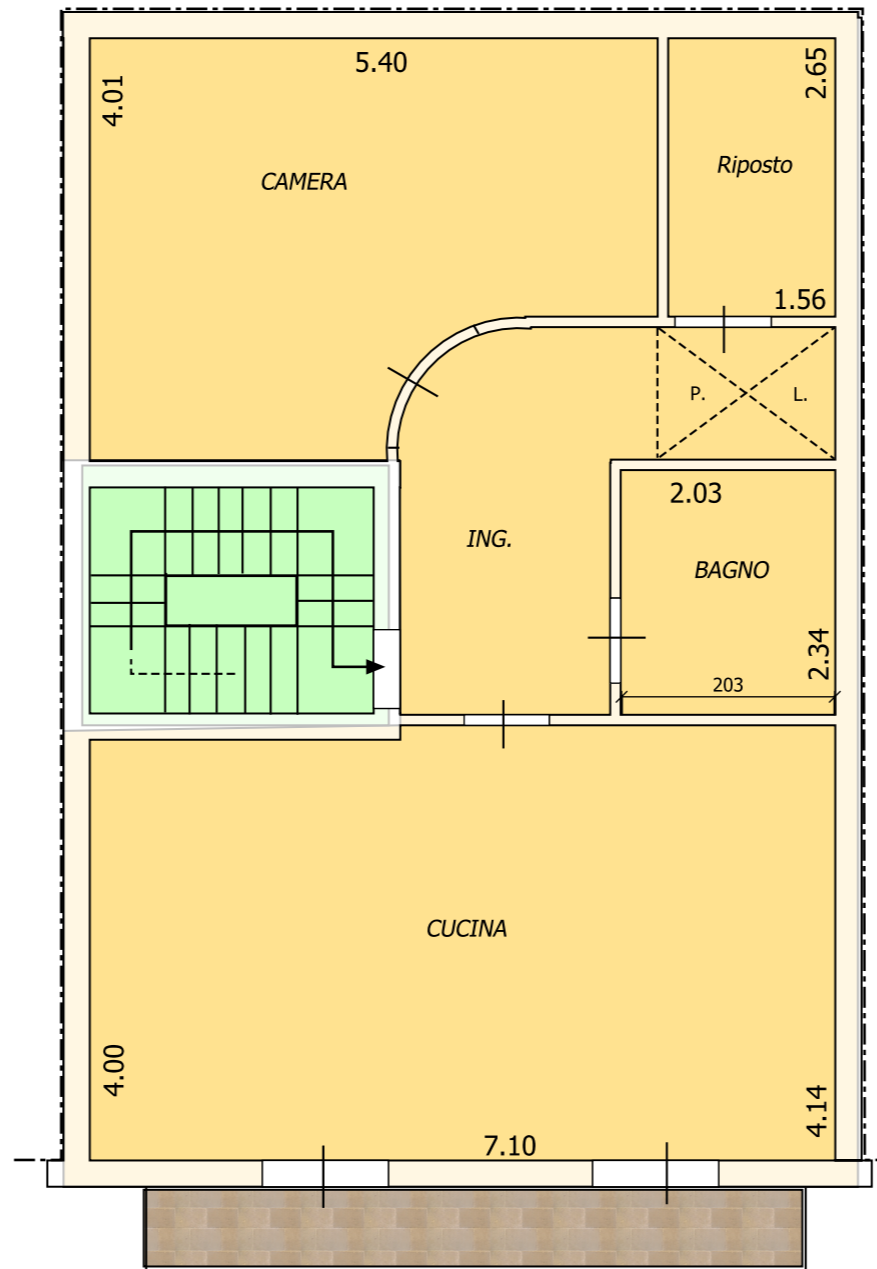
**PIANTA PIANO TERRA**



**VIA MILAZZO**

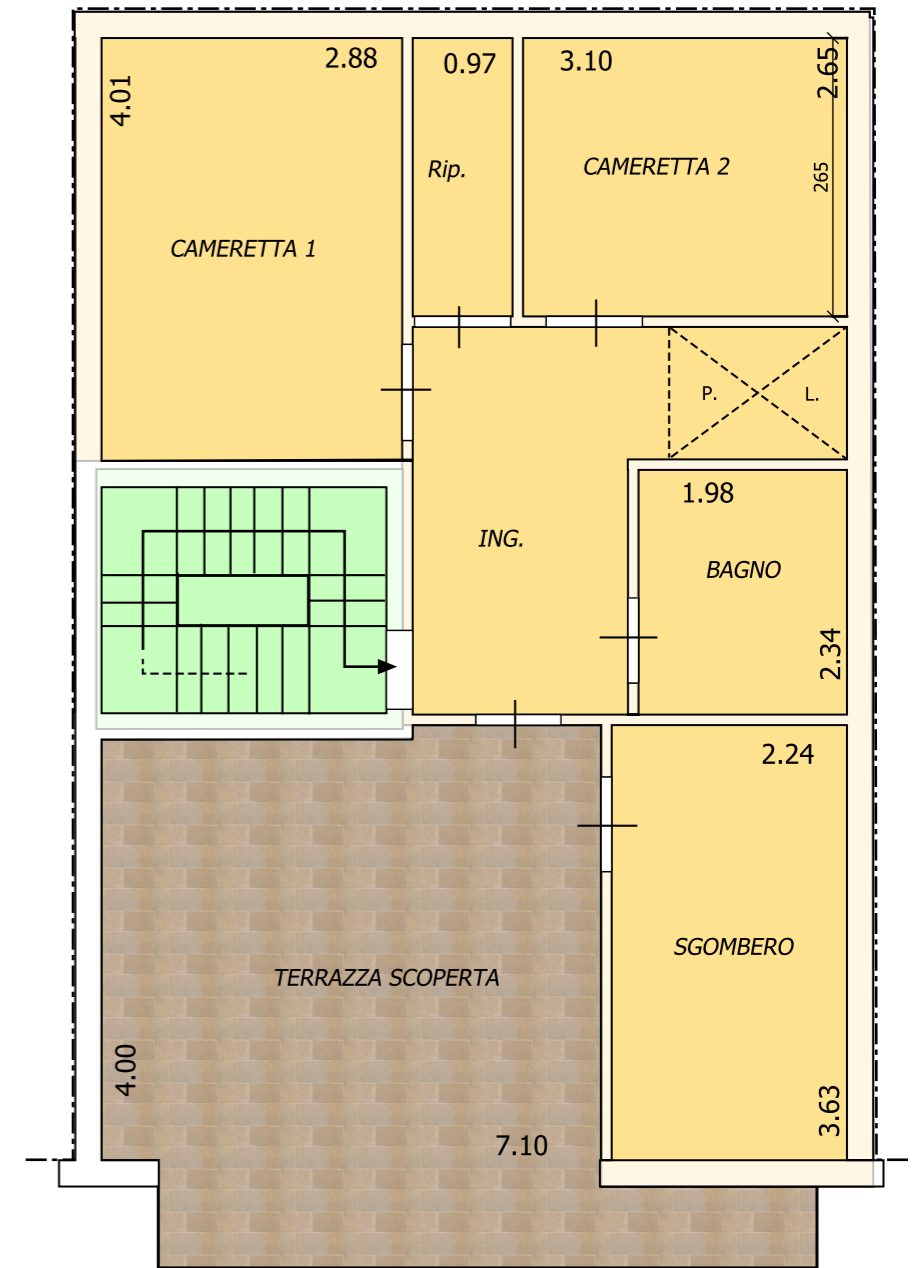
Sup. lorda: mq 76,45  
Sup. utile: mq 66,35  
Vano Scala: mq 8,40

**PIANTA PIANO PRIMO**



Sup. lorda: mq 43,15  
Sup. utile: mq 37,15  
Locale Sgombero - Sup. L.: mq 11,00  
Terrazza Scoperta mq 25,20

**PIANTA PIANO SECONDO**



**ALLEGATO N. 6**