



## DOCUMENTAZIONE FOTOGRAFICA

STUDIO TECNICO POLIGNANO



Foto 1 - esterno dell'edificio

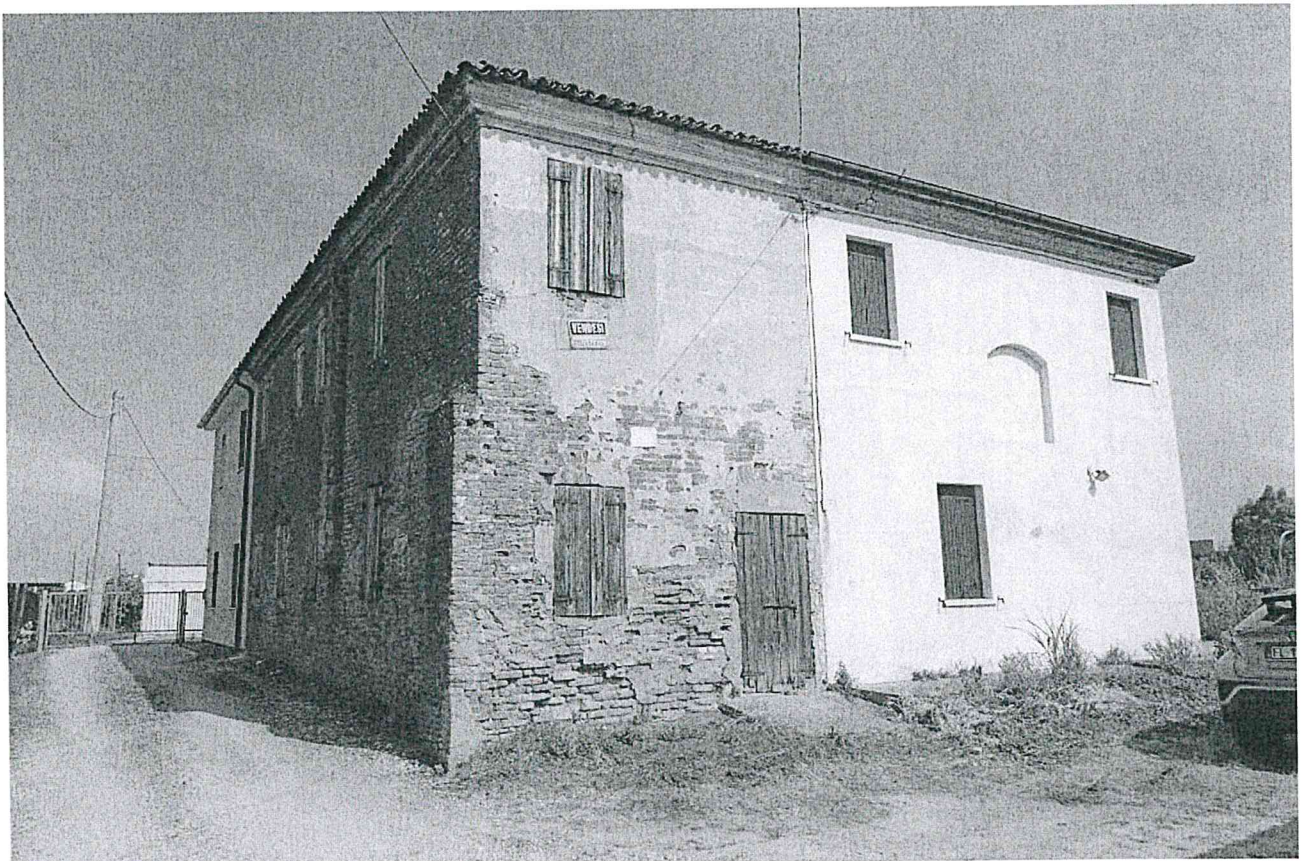


Foto 2 - esterno dell'edificio

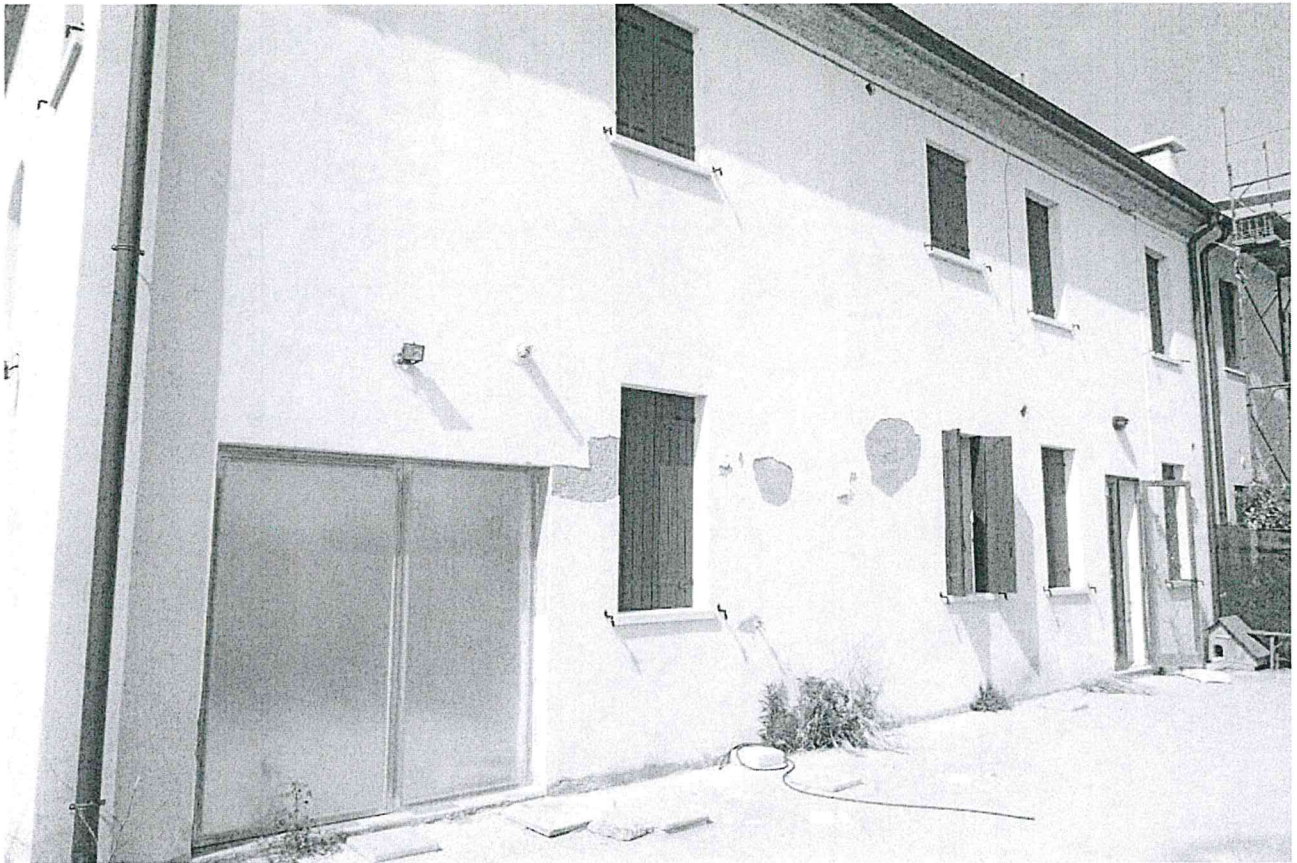


Foto 3 - esterno dell'edificio



Foto 4 - esterno dell'edificio



Foto 5 - corte esclusiva ed area rurale



Foto 6 - area cementata all'ingresso



Foto 7 - portoncino d'ingresso

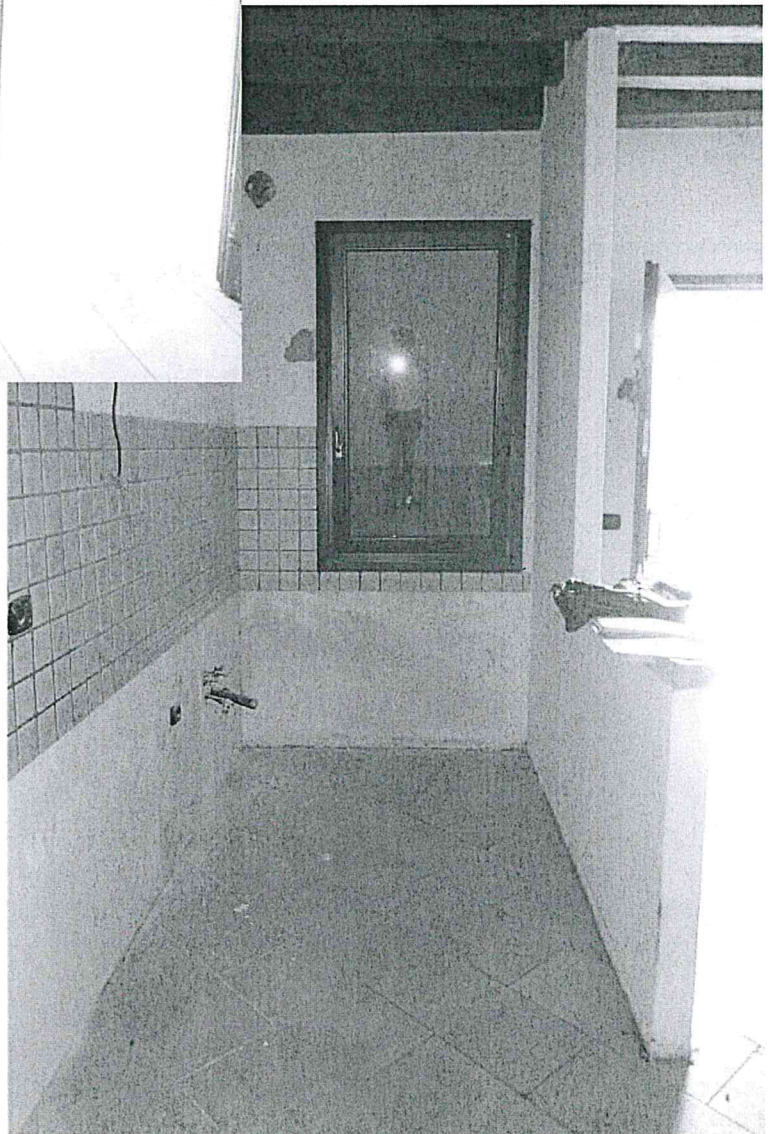


Foto 8 - soggiorno



Foto 9 - ingresso e soggiorno

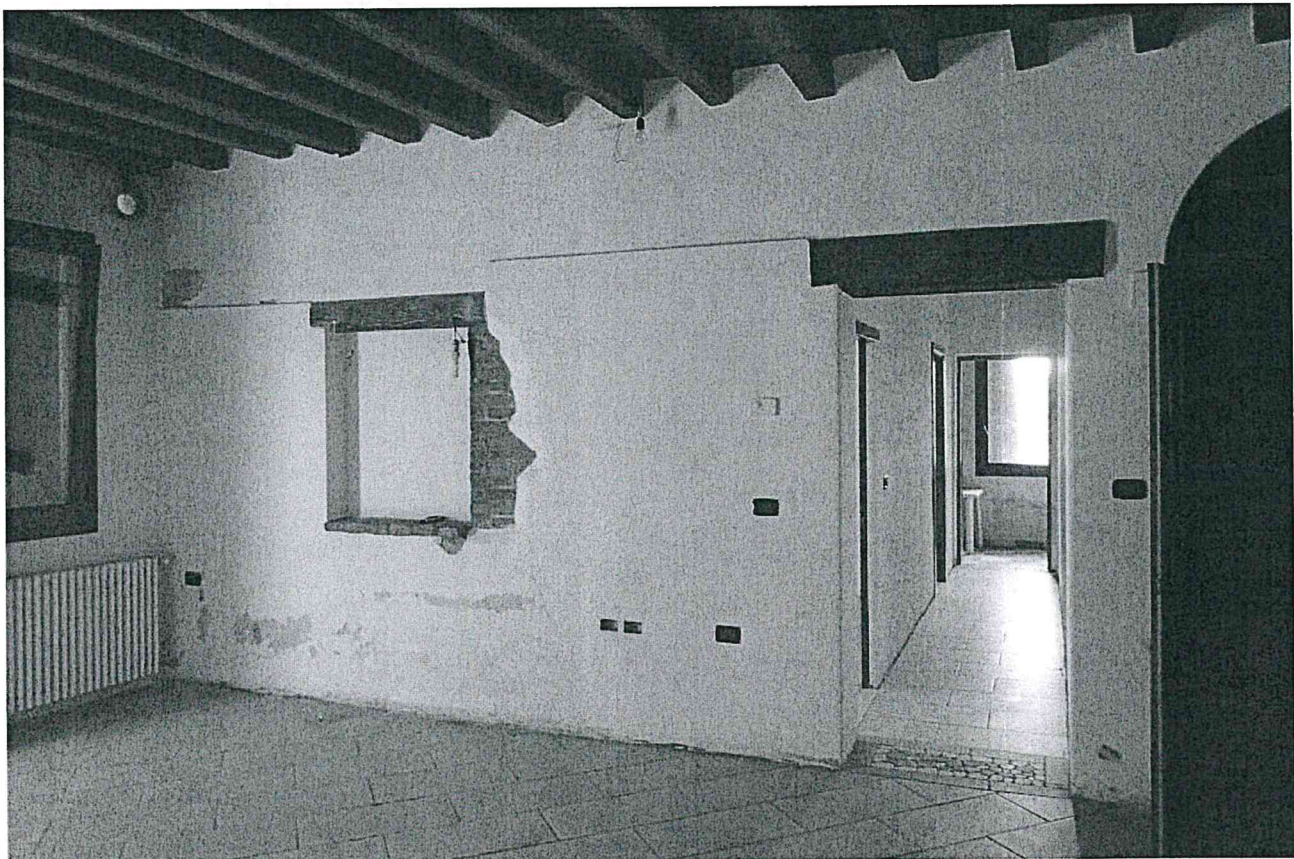


Foto 10 - soggiorno

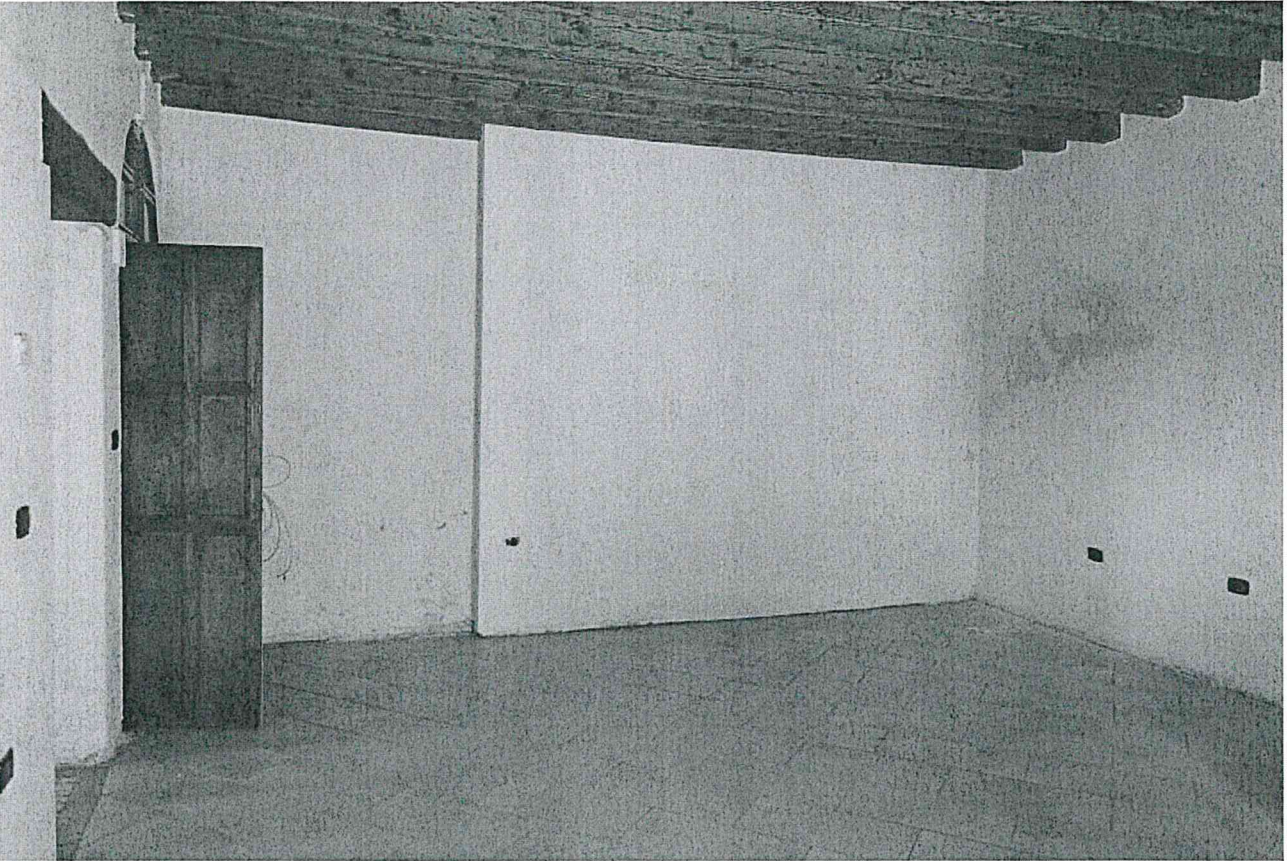


Foto 11 - soggiorno

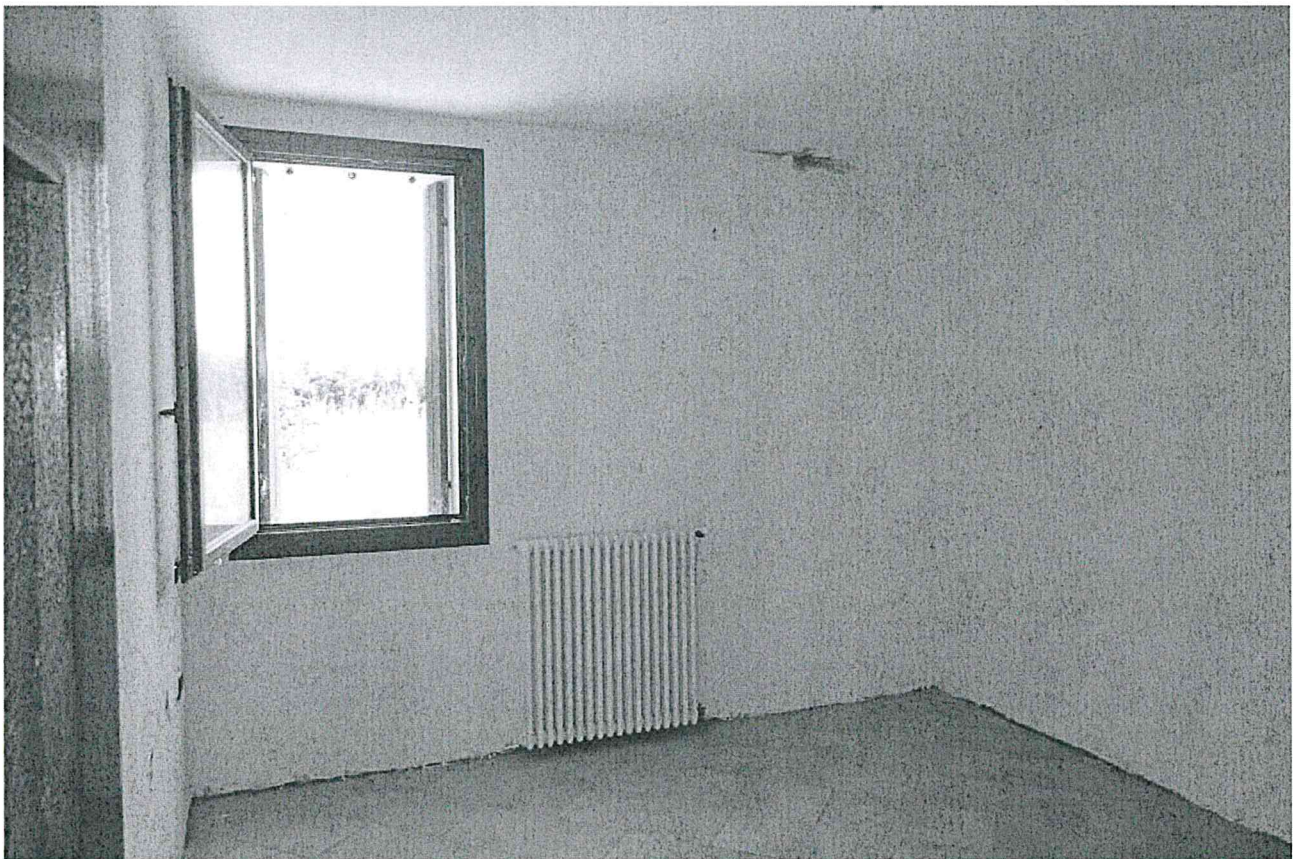


Foto 12 - cucina



Foto 13 - servizio igienico



Foto 14 - servizio igienico





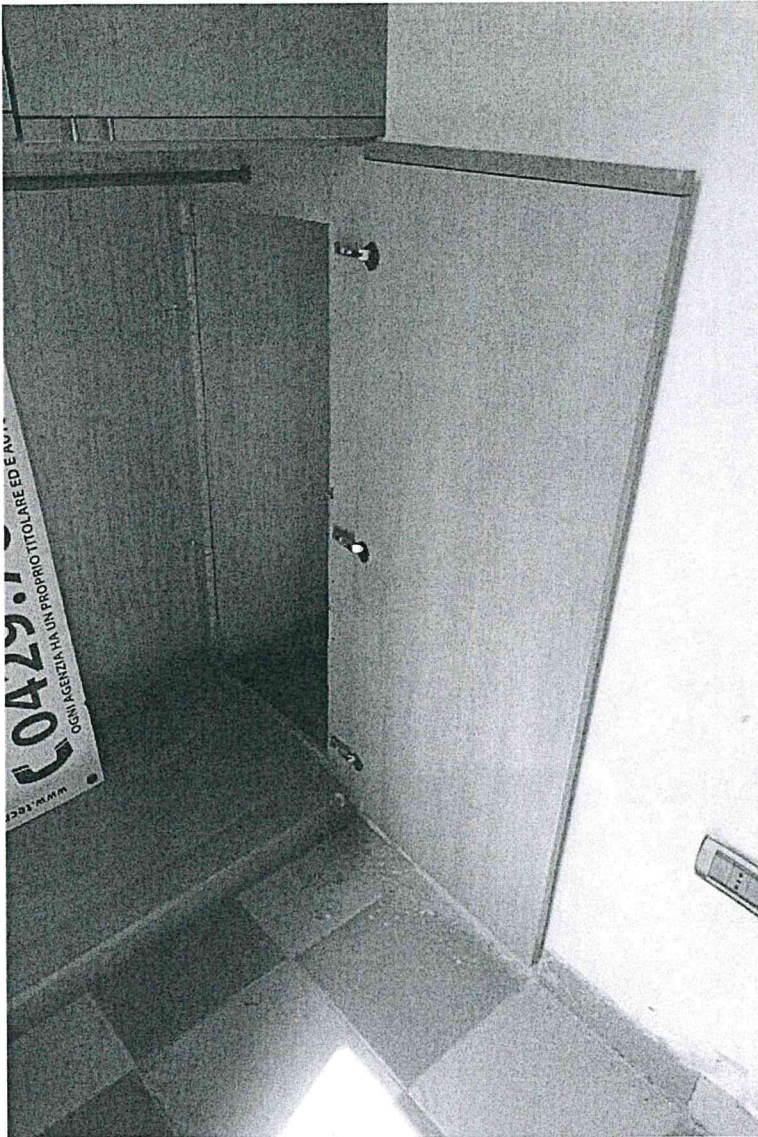


Foto 17 - ingresso al sottoscala

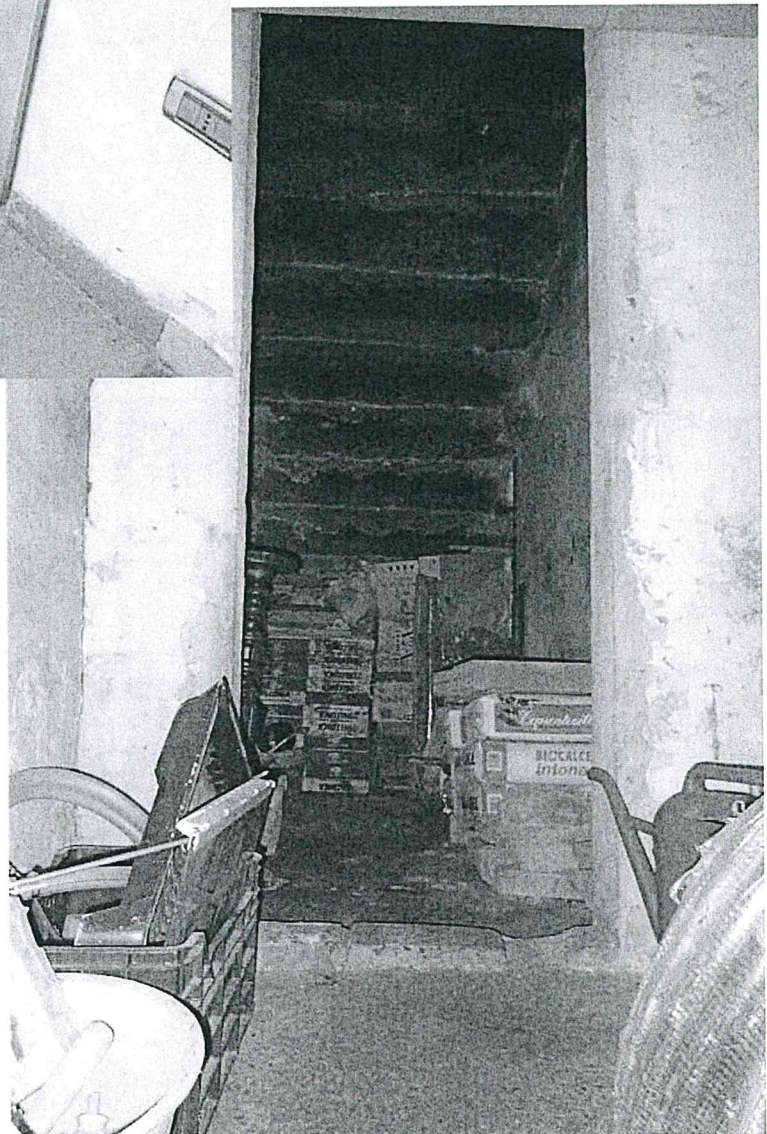


Foto 18 - sottoscala



Foto 19 - vano scale



Foto 20 - pianerottolo al primo piano ed  
accesso al ripostiglio

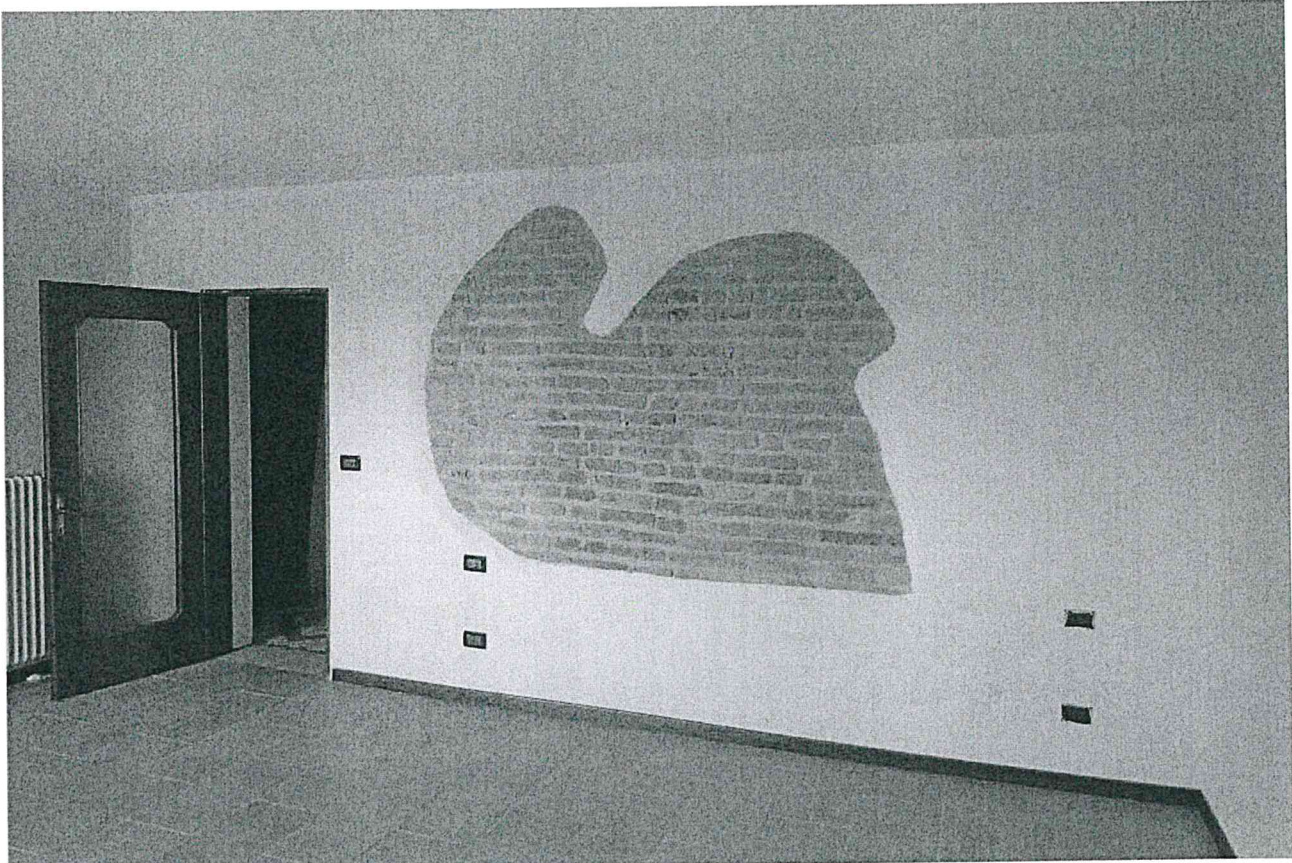


Foto 21 - Prima camera matrimoniale



Foto 22 - Prima camera matrimoniale

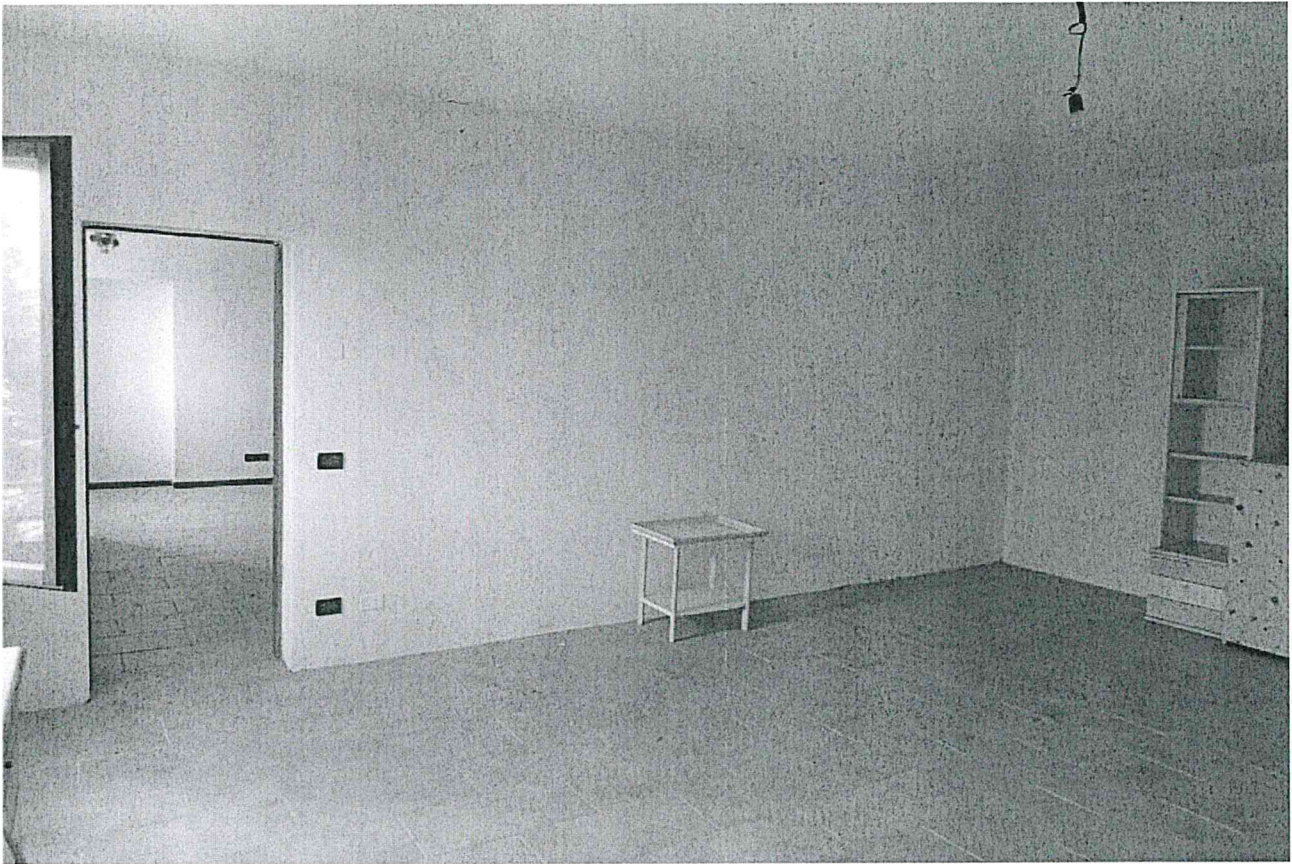


Foto 23 - Seconda camera matrimoniale



Foto 24 - Seconda camera matrimoniale



Foto 25 - Ripostiglio al primo piano

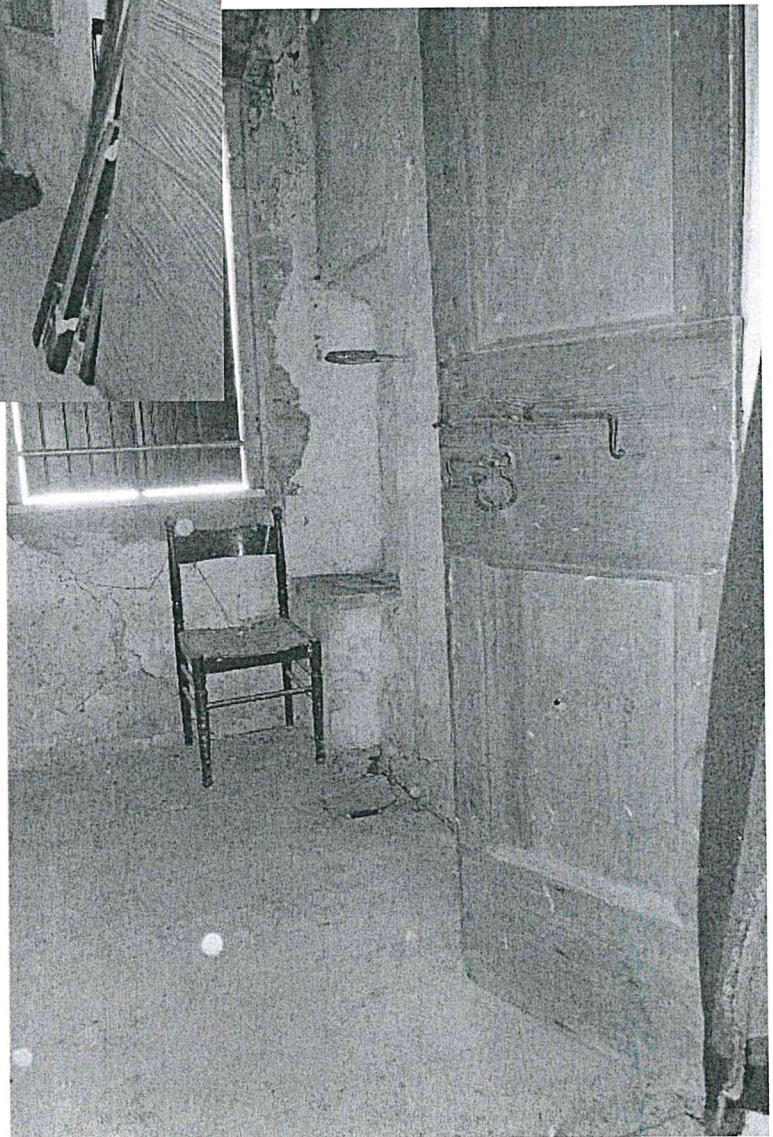


Foto 26 - Ripostiglio al primo piano



Foto 27 - Infissi a vetro singolo



Foto 28 - Infissi in vetrocamera



Foto 29 - Infissi esterni



Foto 30 - Porte interne



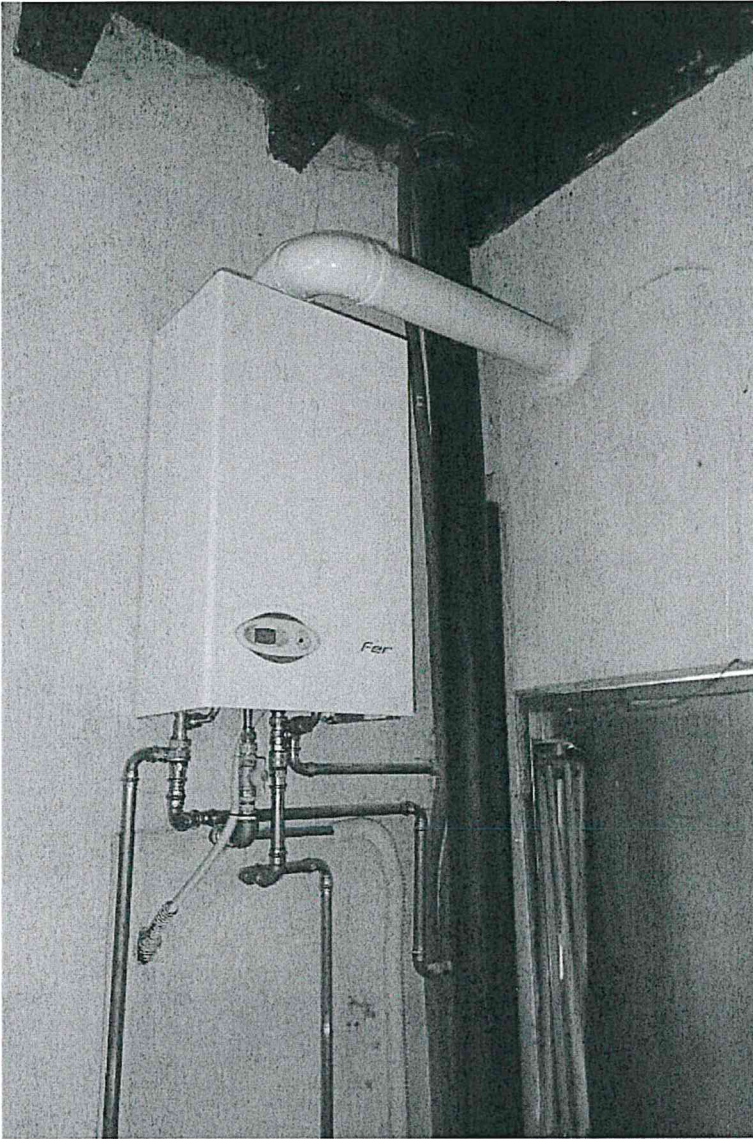


Foto 31 - Caldaia

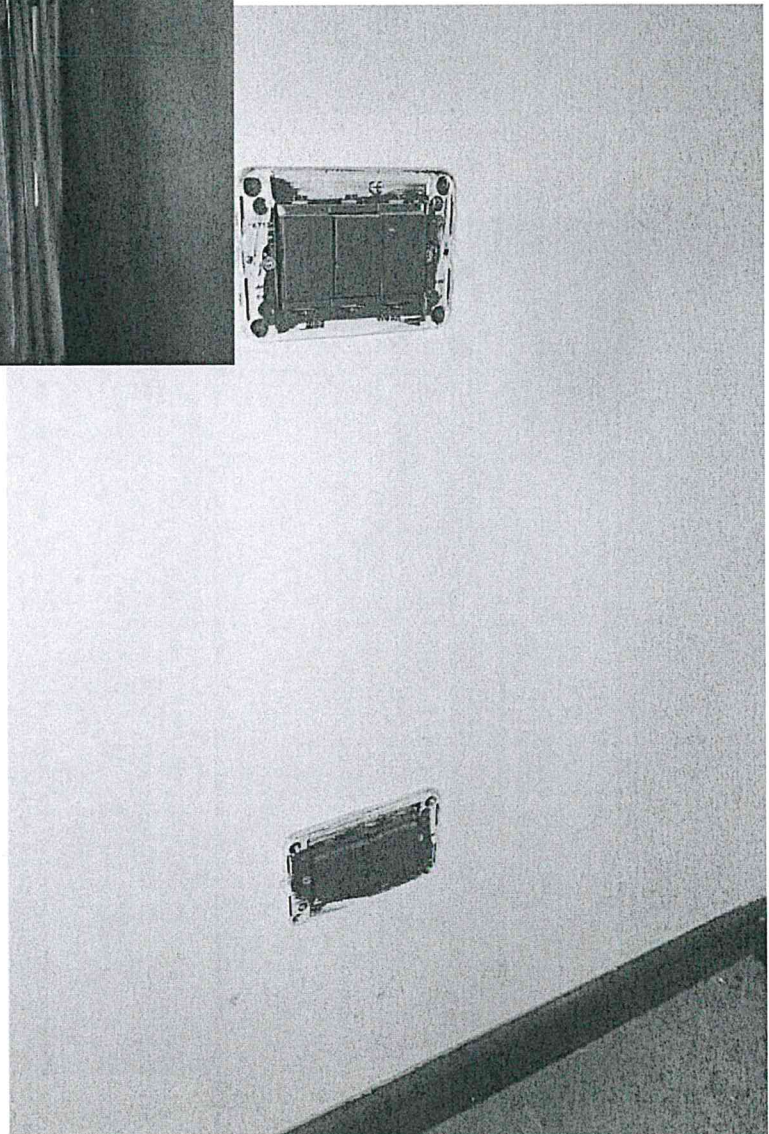


Foto 32 - Particolare impianto elettrico



Foto 33 - Impianto elettrico

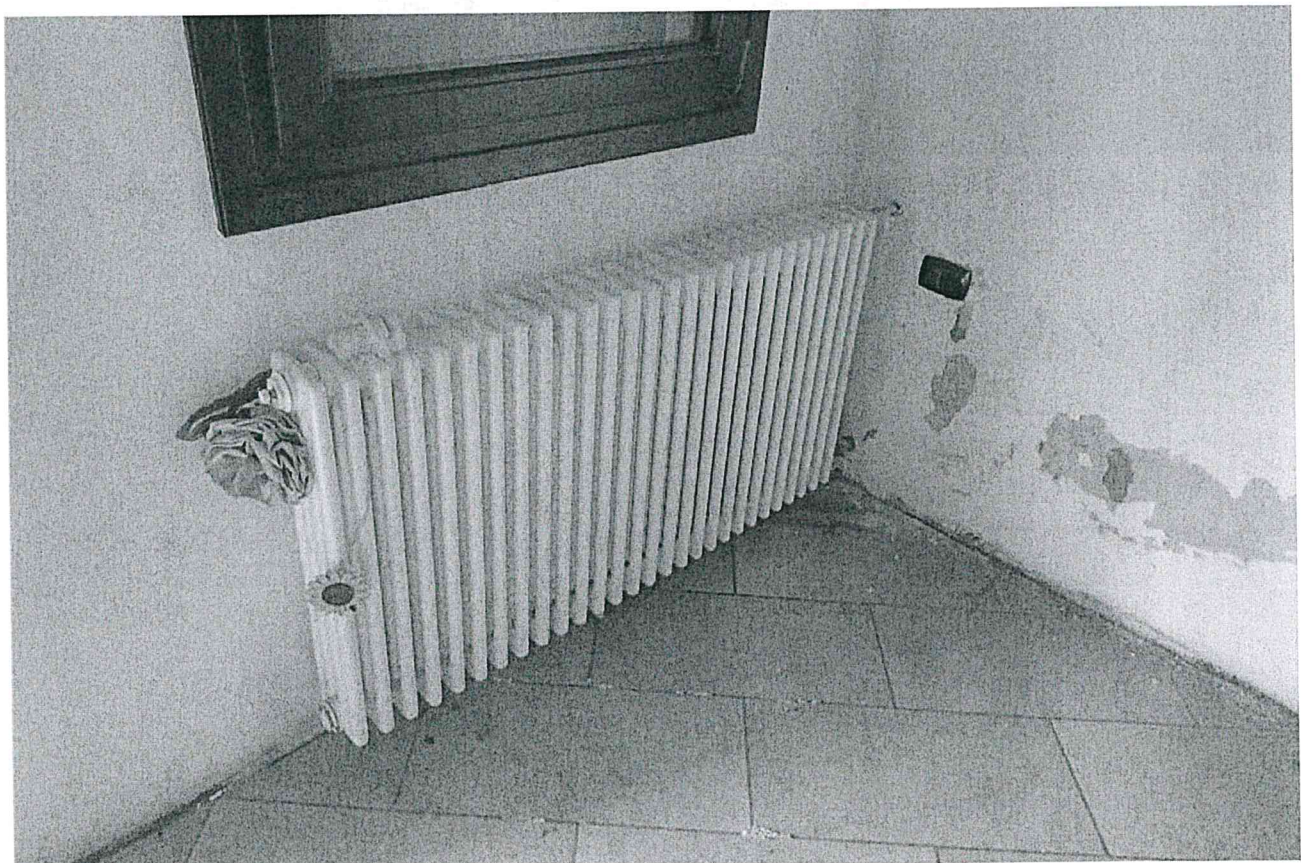


Foto 34 - Particolare impianto termoidraulico