

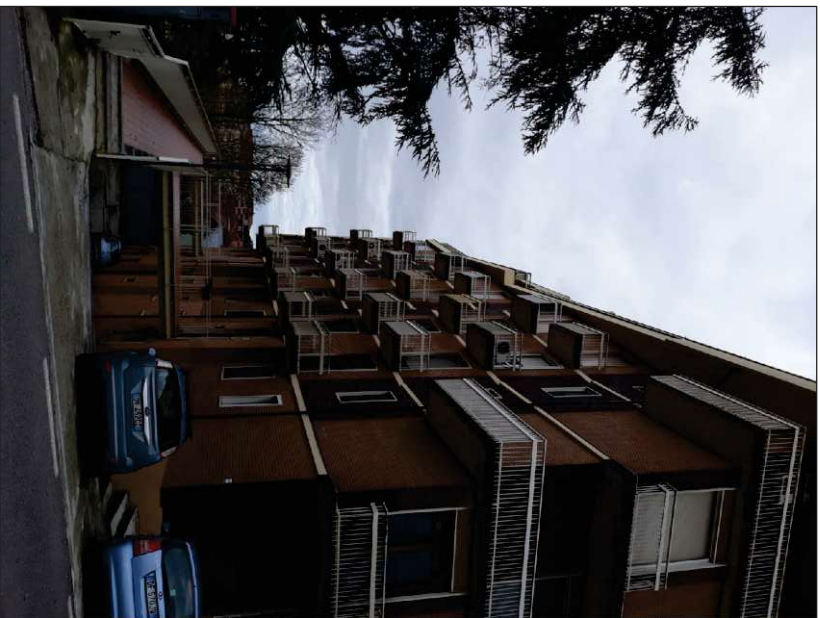
**TRIBUNALE DI VERCELLI**  
**ESECUZIONE IMMOBILIARE N° 170/2023 R.G.E.**

**ALLEGATI ALLA RELAZIONE DEL C.T.U. ESPERTO STIMATORE**

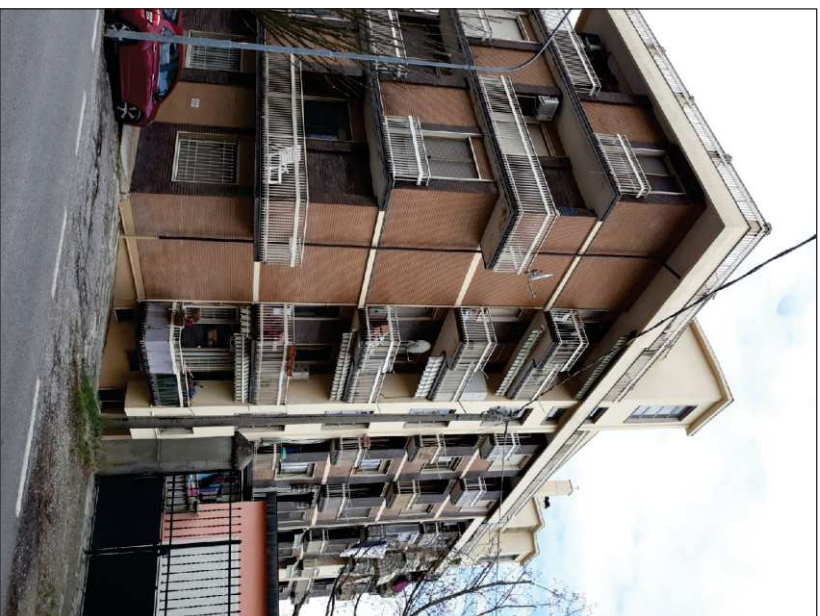
**Allegato 2**

**Documentazione fotografica**

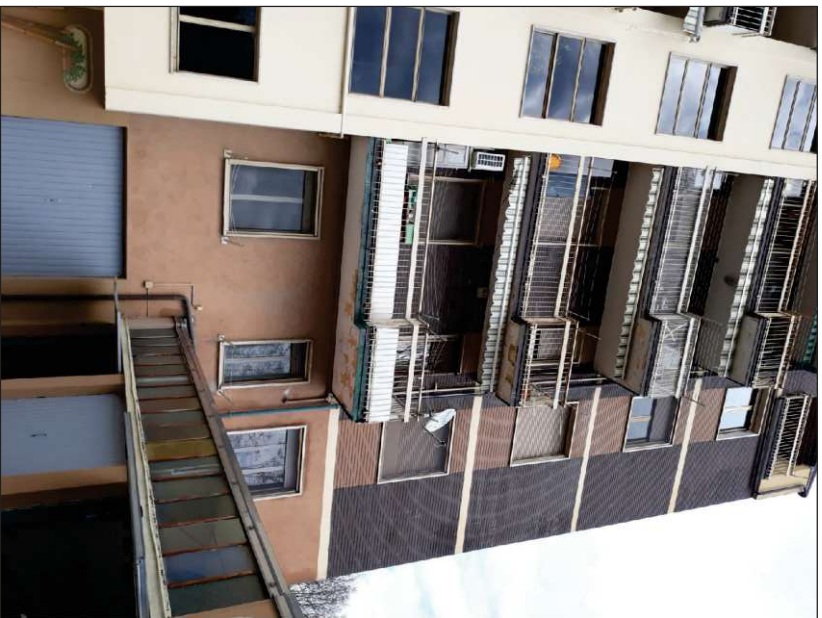




*Vista del Condominio da Salita Sant'Anna*



*Vista laterale del Condominio*



*Particolare facciata Sud alloggio*



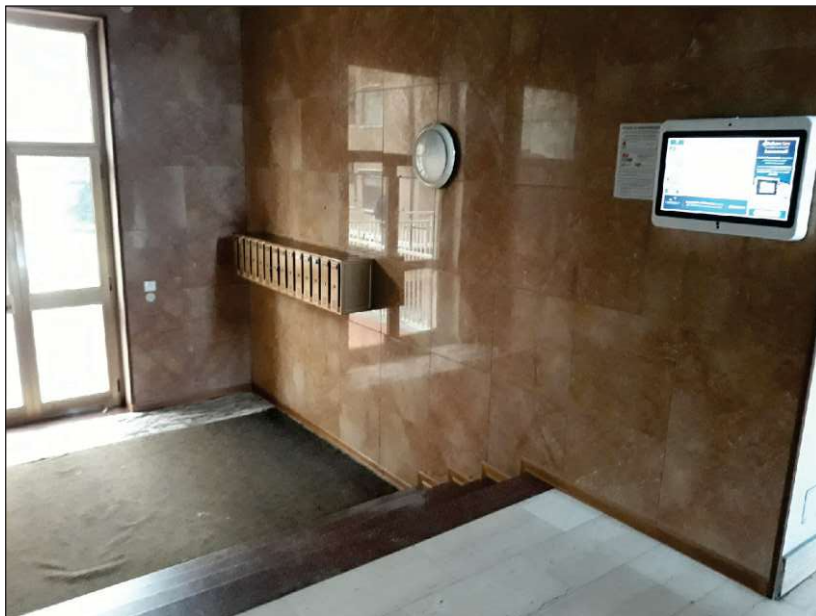
*Passerella ingresso al Condominio*



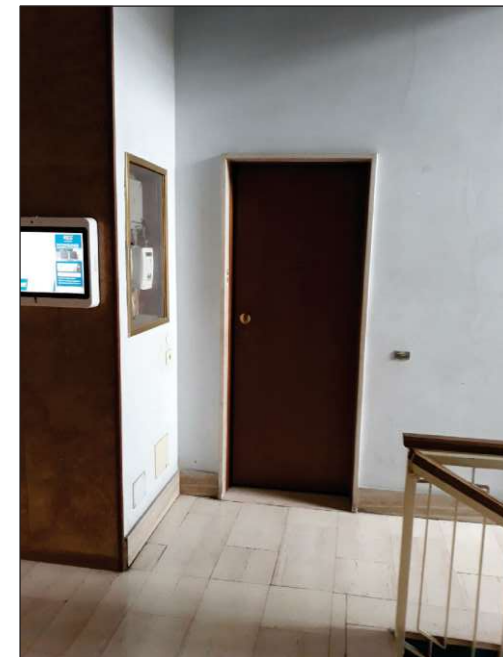
*Ingresso esterno*



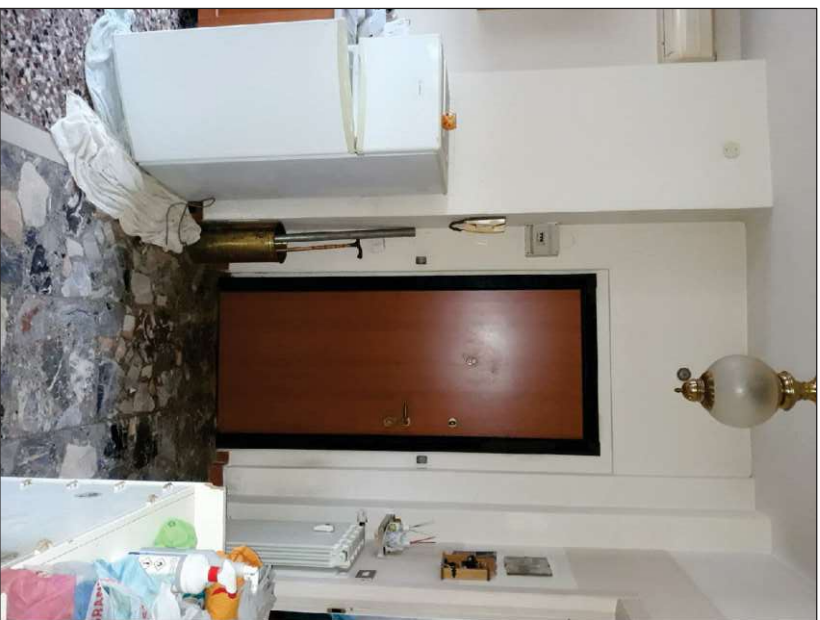
*Particolare facciata Nord alloggio*



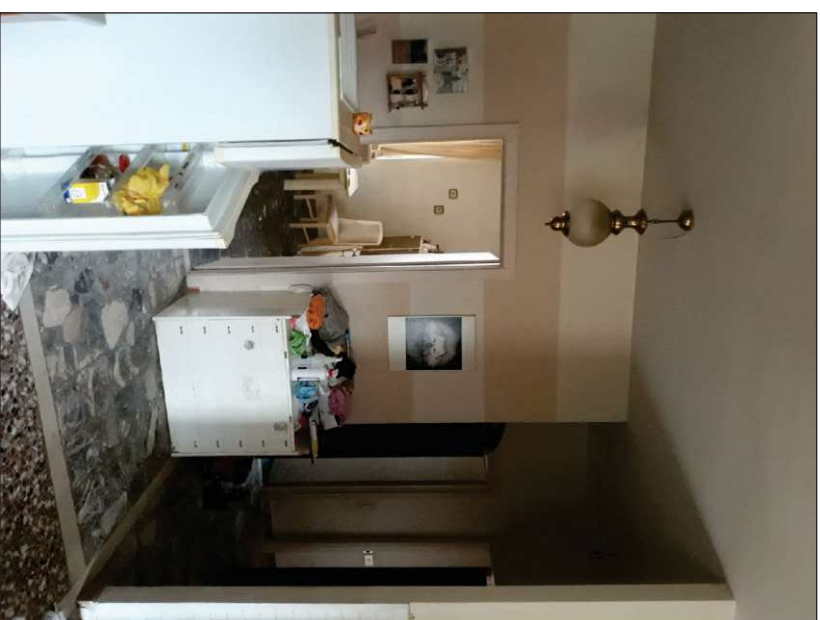
*Atrio ingresso condominiale*



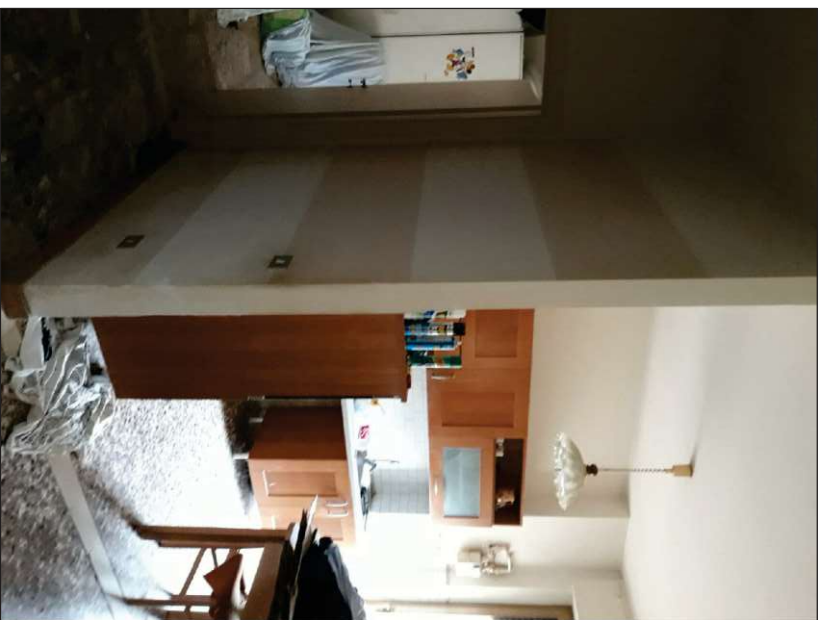
*Ingresso all'alloggio su vano scala*



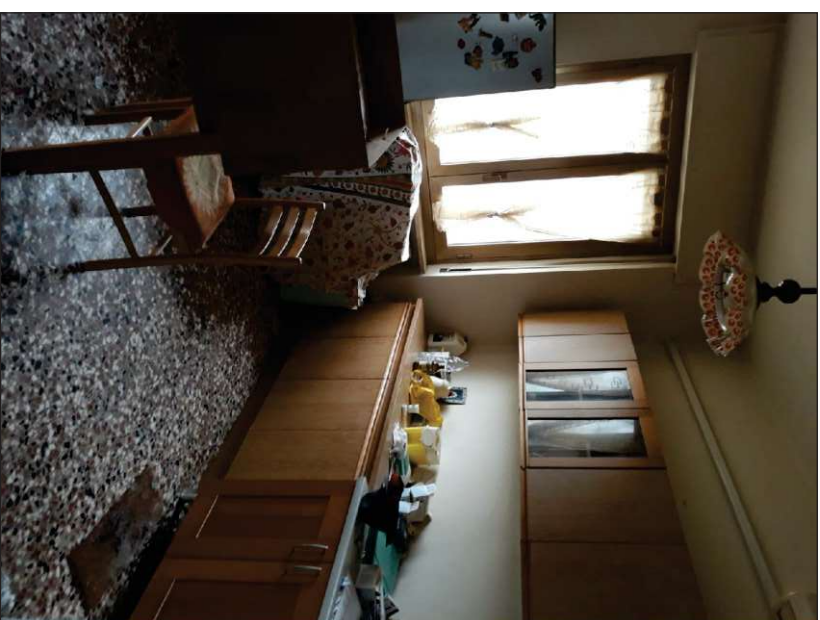
*Ingresso*



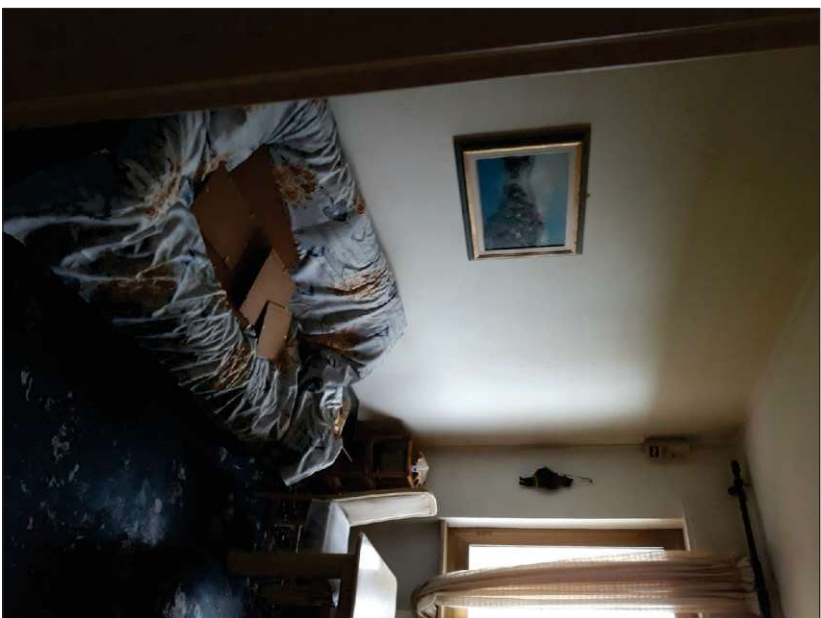
*Disimpegno centrale*



*Cucina-Pranzo*



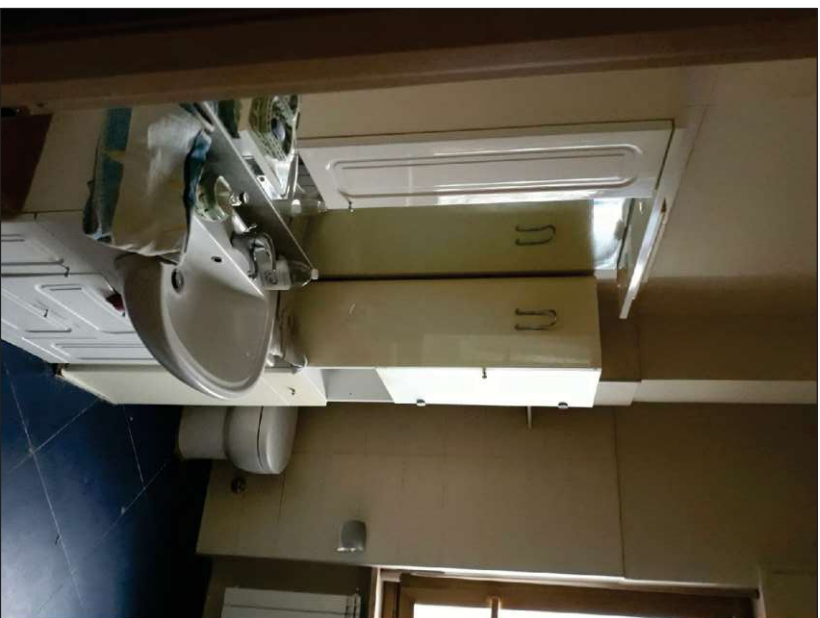
*Cucina-Pranzo*



Soggiorno



Soggiorno



Bagno



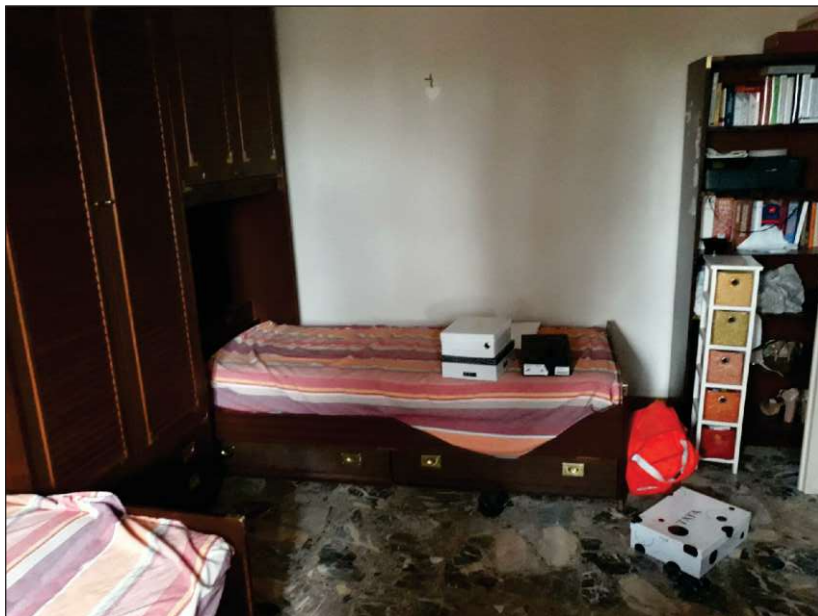
Bagno



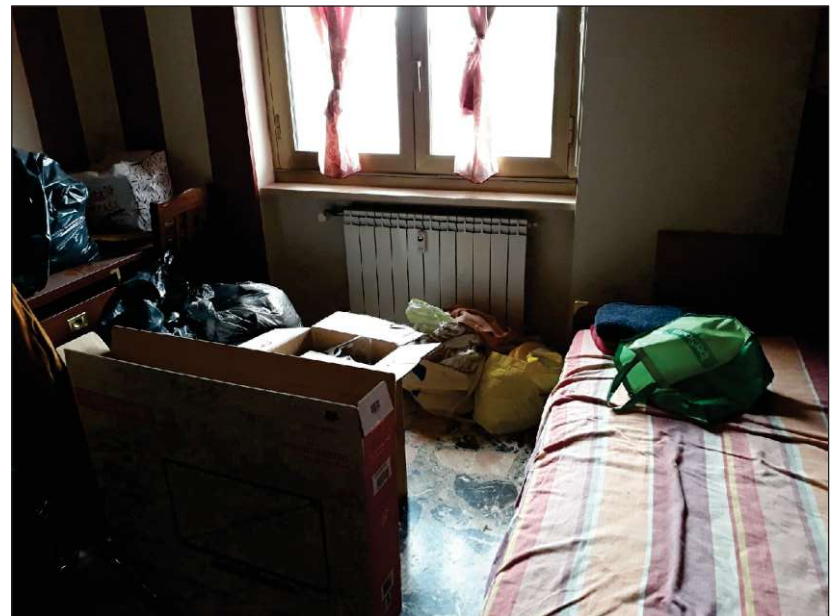
Camera 1



Camera 1



Camera 2



Camera 2



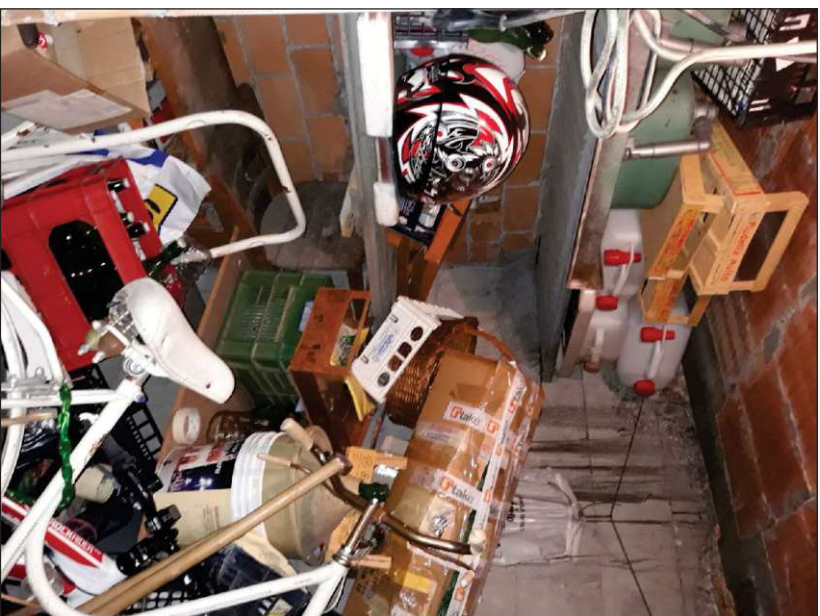
Balcone



Corridoio cantina



Ingresso Cantina



Cantina