



PROSPETTO EST



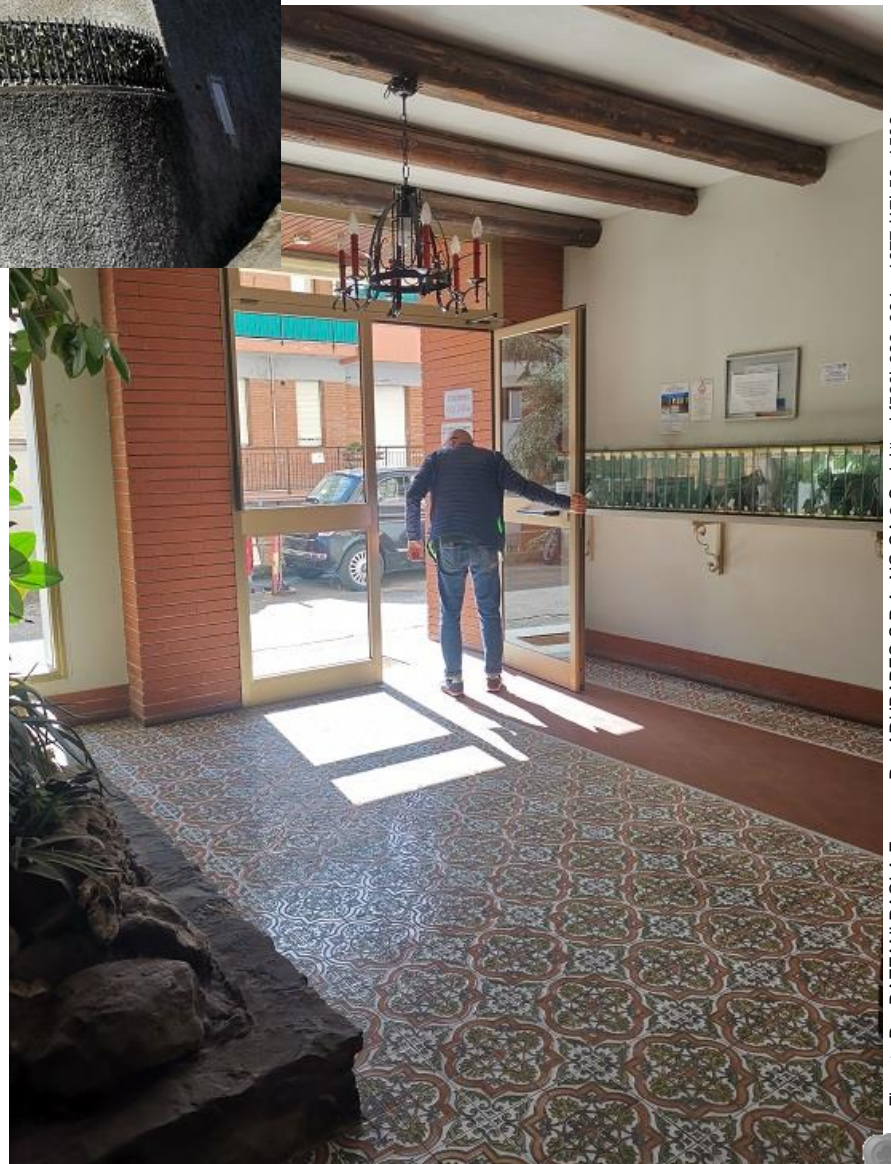
PROSPETTI NORD/EST

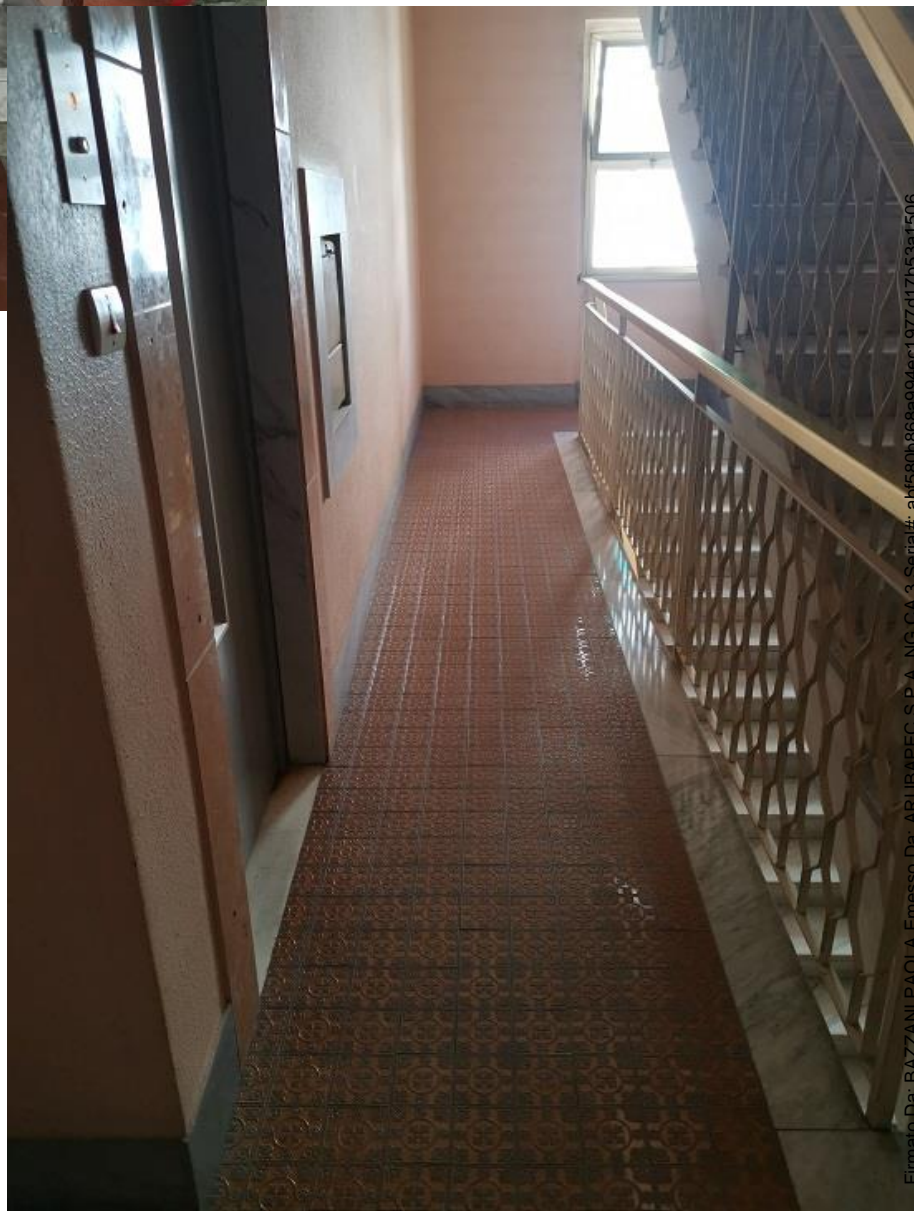




PROSPETTO NORD

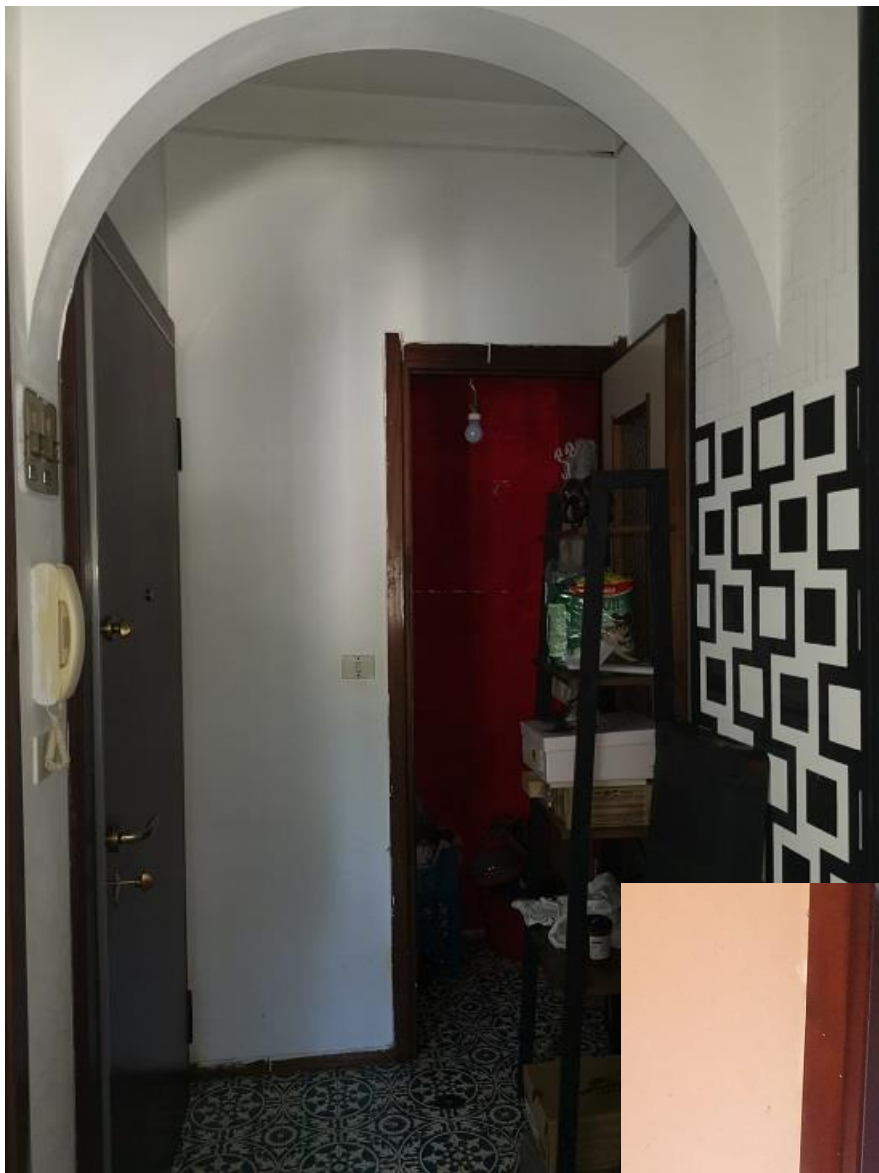
ANDRONE D'INGRESSO





Firmato Da: BAZZANI PAOLA Emesso Da: ARUBAPEC S.P.A. NG CA 3 Serial#: a1f580b868a904ec1077d17b53af506



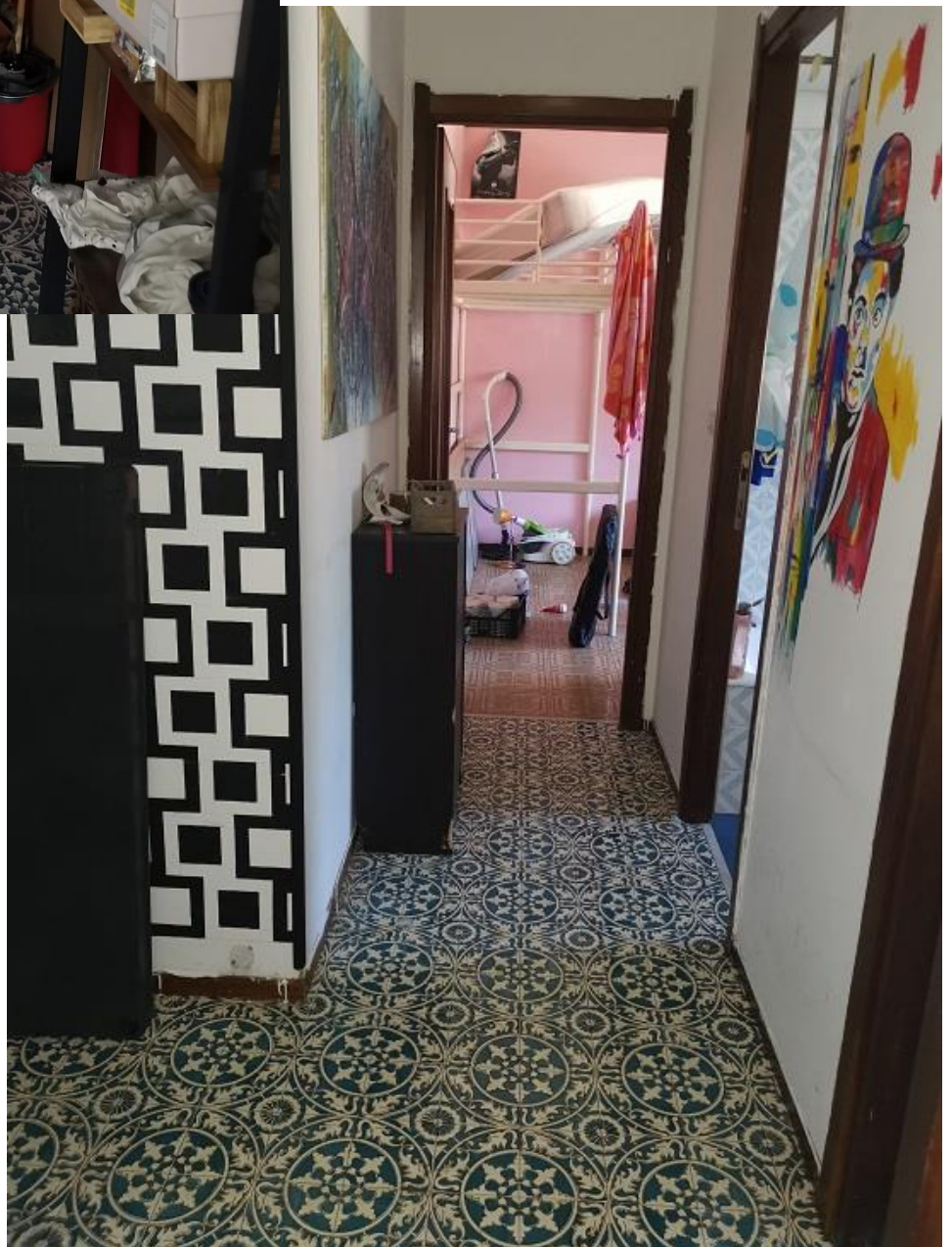


PORTA CAPO SCALA/INGRESSO





INGRESSO E VISTA DISPENSA



CORRIDOIO



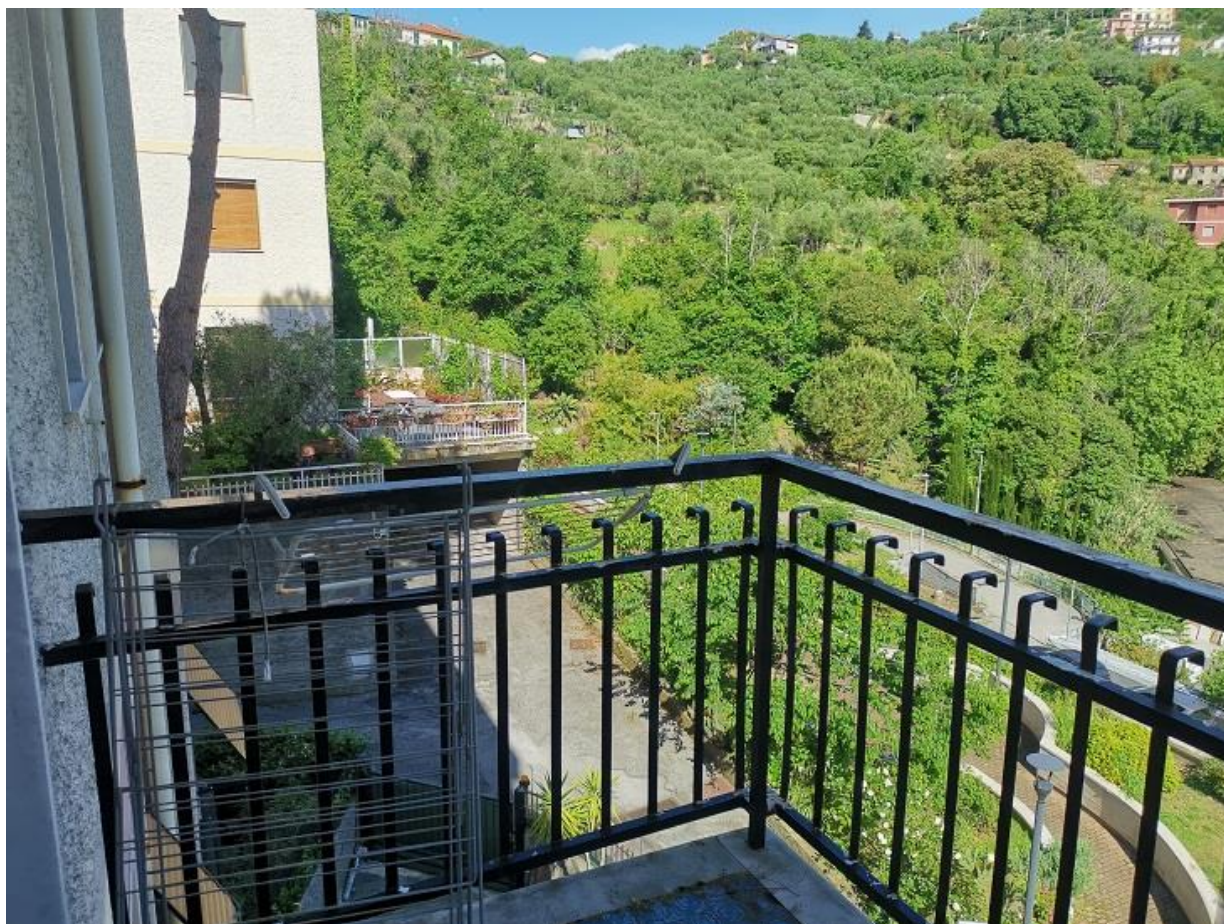


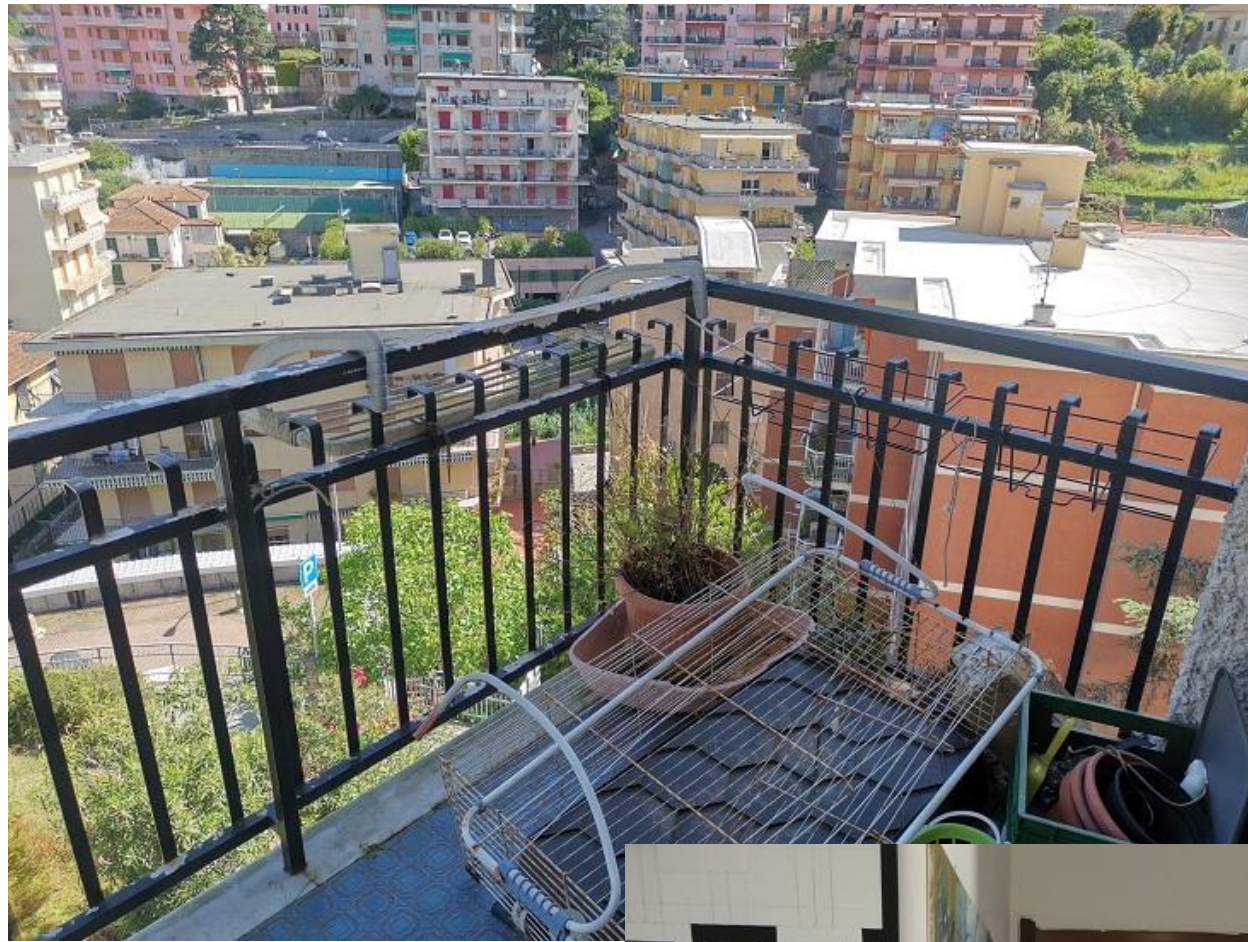
SOGGIORNO





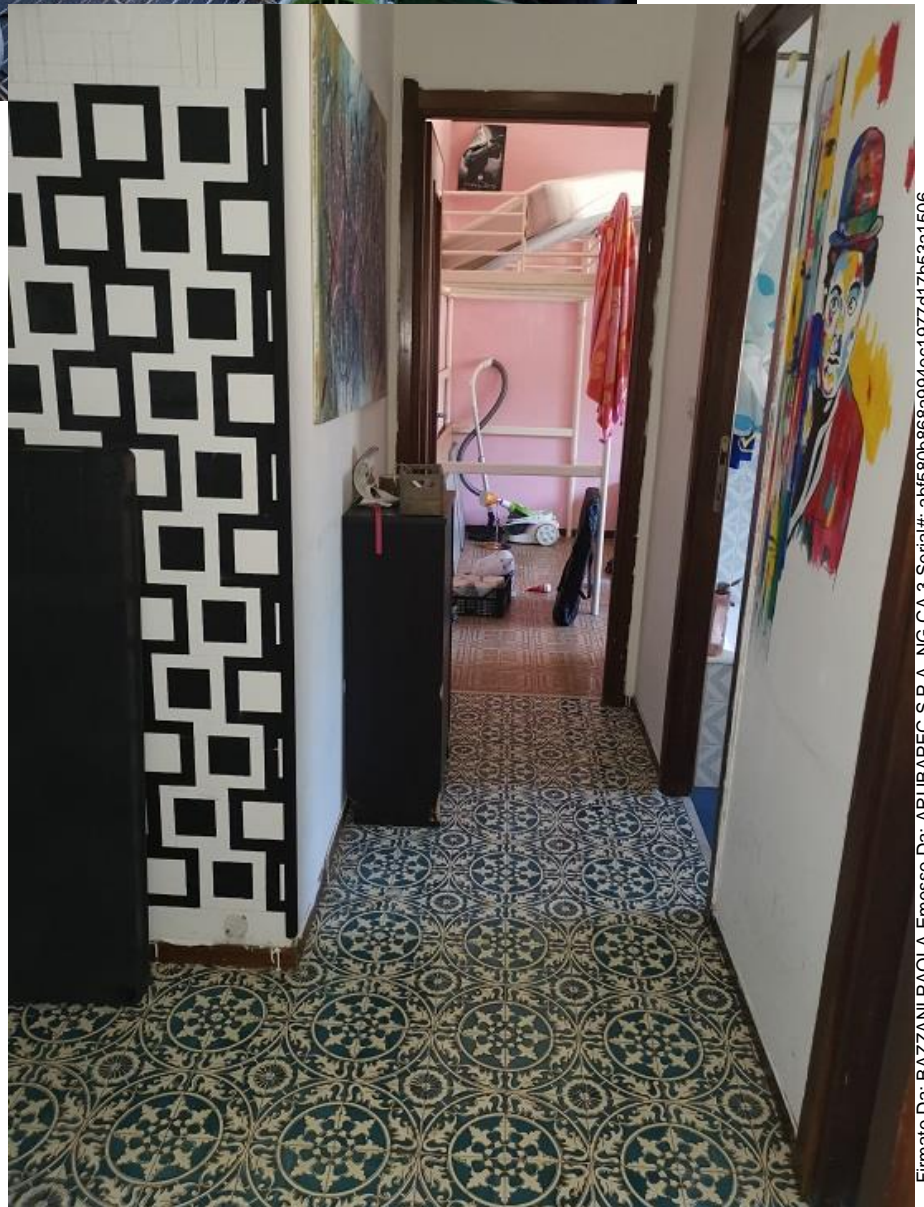
BALCONE  
VISTA DAL BALCONE



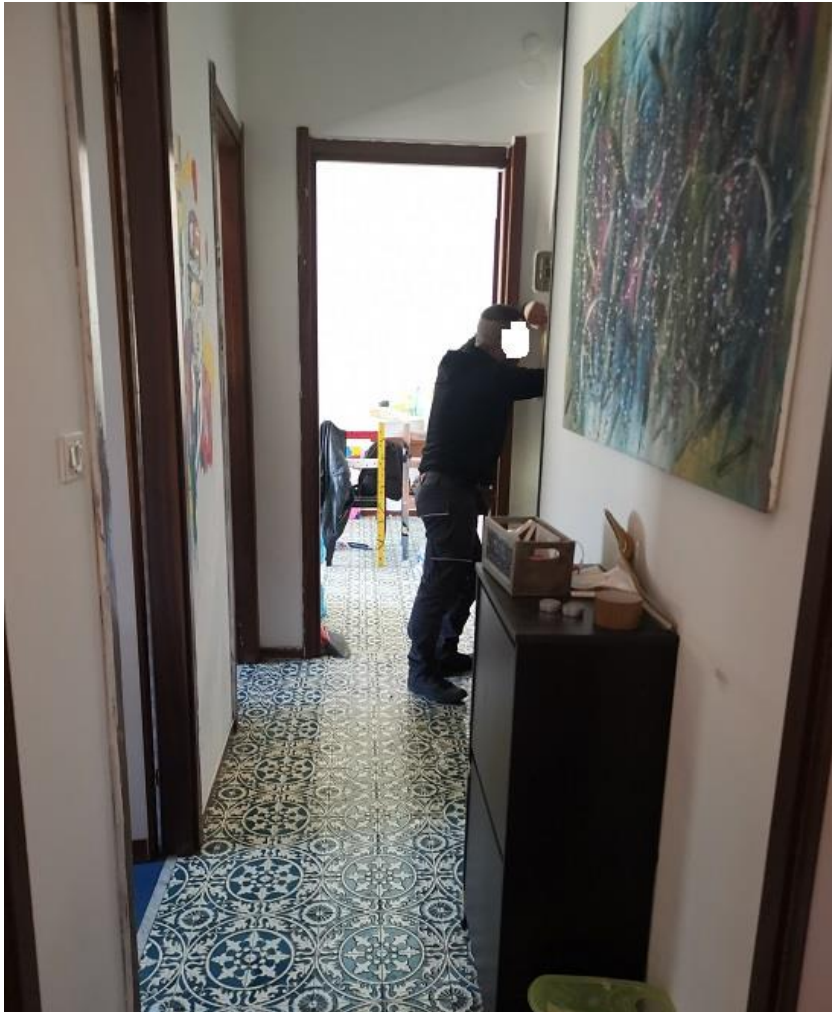


VISTA DAL  
BALCONE

CORRIDOIO







CORRIDOIO

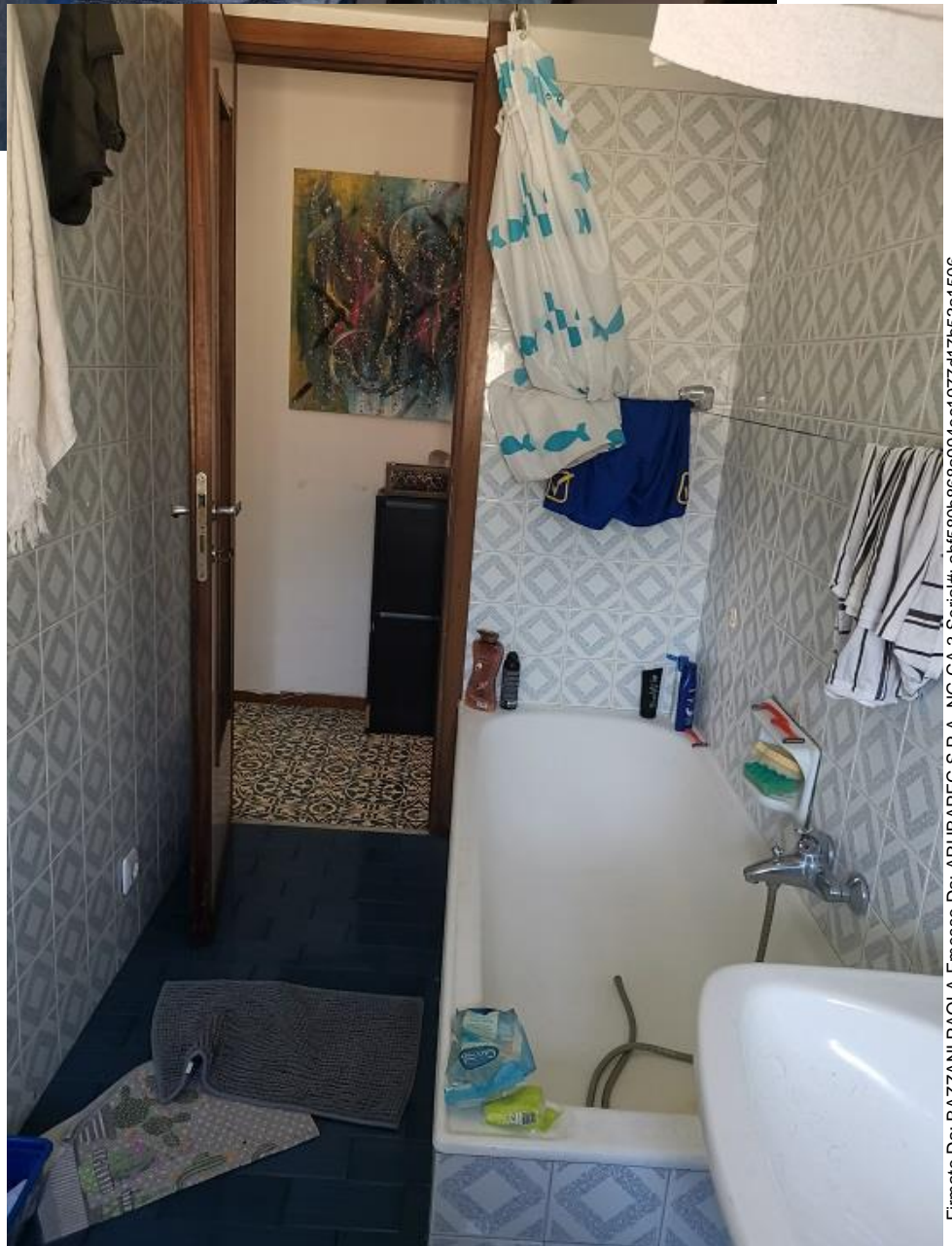
CUCINA

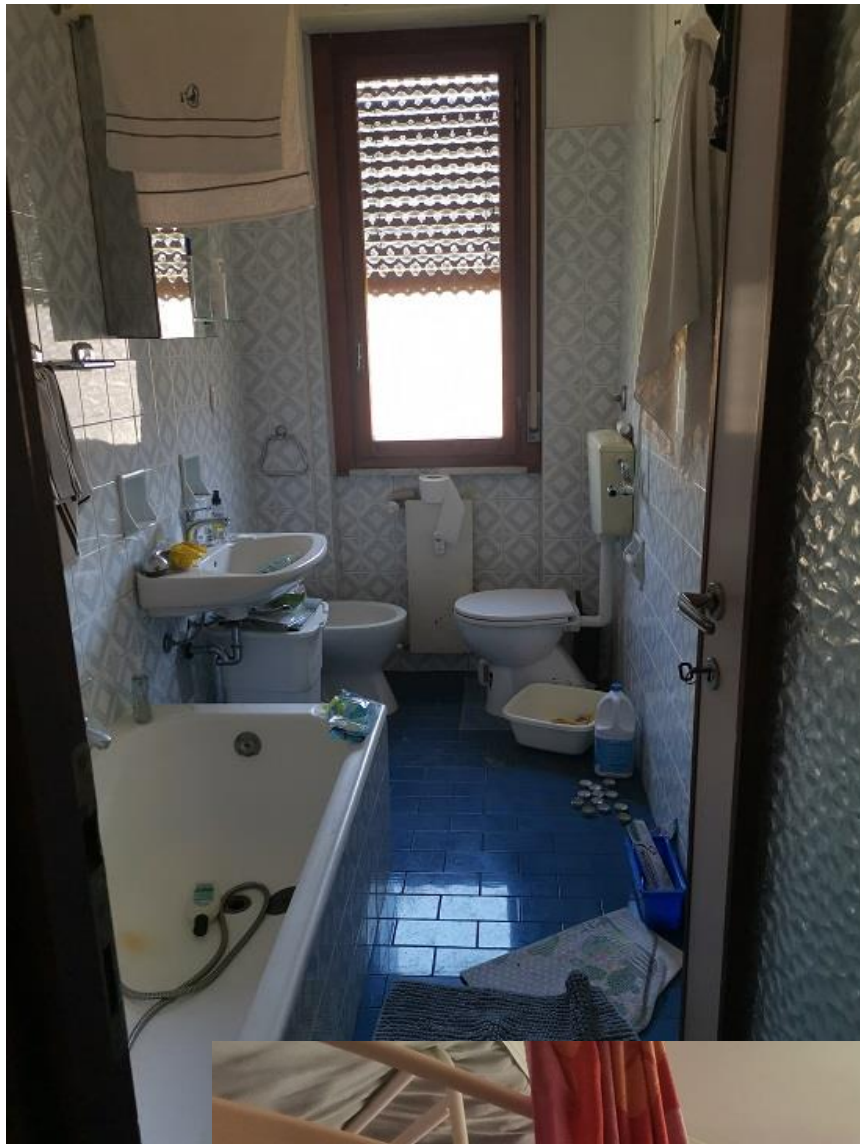






BAGNO





BAGNO



CAMERA MATRIMONIALE





CAMERA MATRINOMIALE

