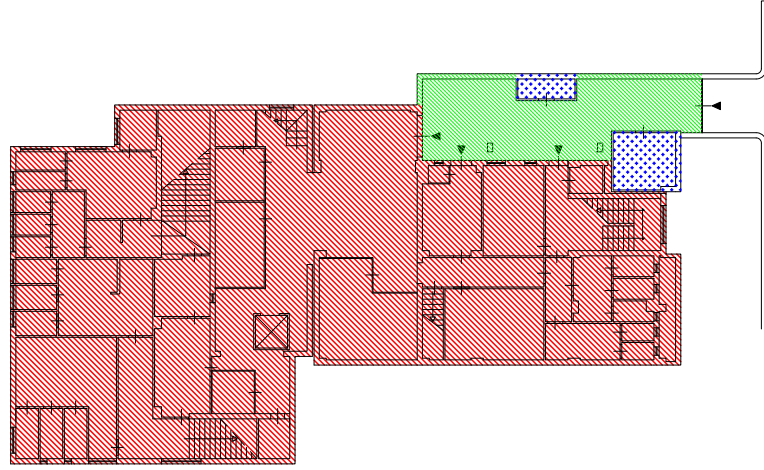





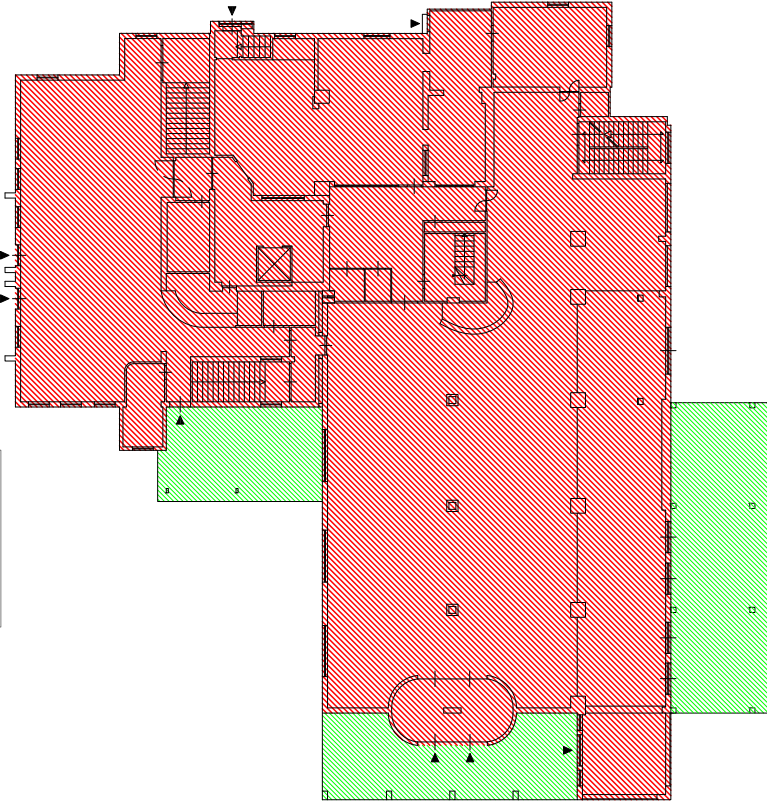
GRAFICI "SUPERFICIE COMMERCIALE"



PIANTA PIANO SEMINTERRATO



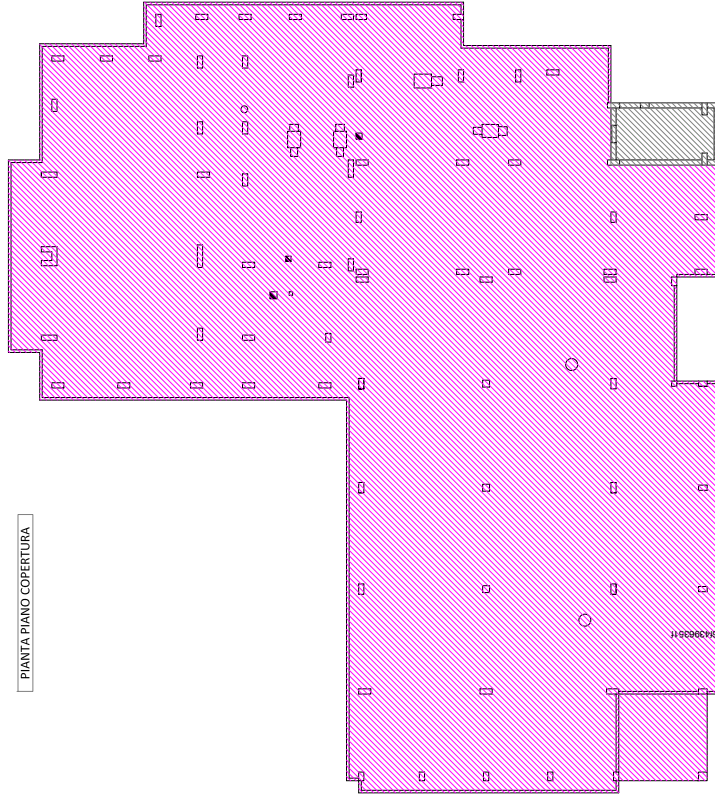
-  Sup. Principale (coef. 100%)= mq. 600,00
-  Locali Tecnici e assimilabili (coef. 15%)= mq. 19,00 x 0,15= mq. 2,85
-  Area di passaggio (coef. 10%)= mq. 67,00 x 0,10= mq. 6,70



PIANTA PIANO TERRA



-  Sup. Principale (coef. 100%)= mq. 1.203,30
-  Aree esterne coperte a diretta pertinenza (coef. 30%)= mq. 213,65 x 0,30= mq. 64,09

PIANTA PIANO COPERTURA



-  Lastrico Solare (coef. 10%)= mq. 1.289,00 x 0,10= mq. 128,90
-  Vano scala