

**ALLEGATO 5**  
***Rilievo Fotografico***





Foto 1 - Vista prospetto Sud/Ovest



Foto 2 - Vista prospetto Sud







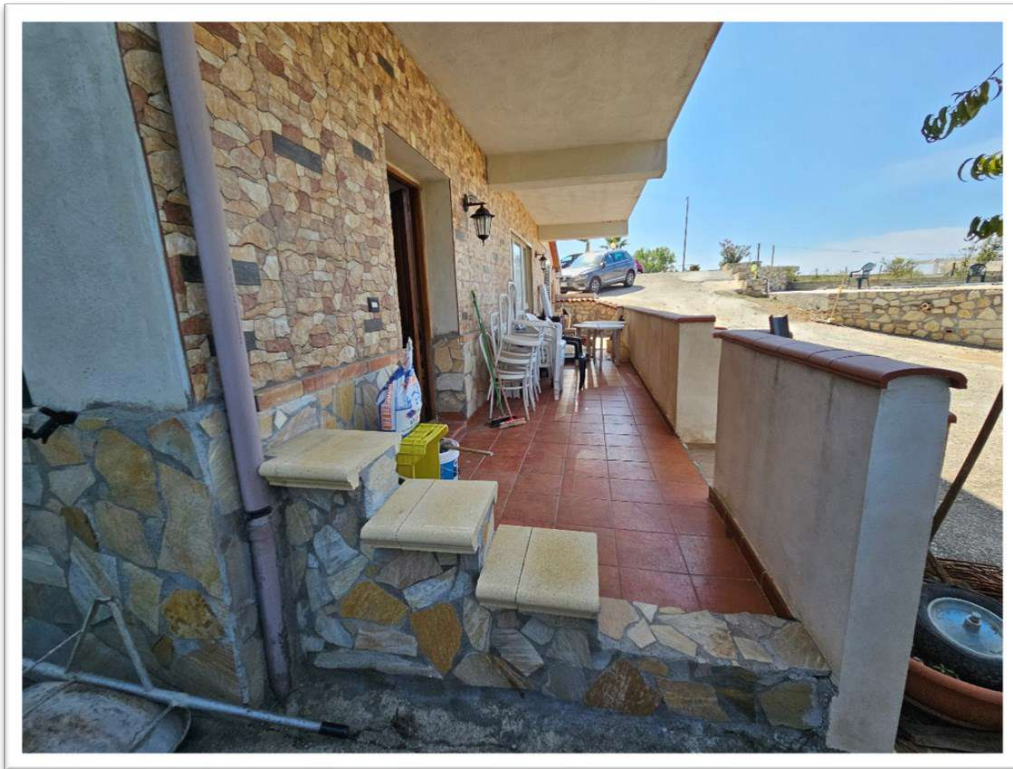
**Foto 3** - Vista prospetto Est



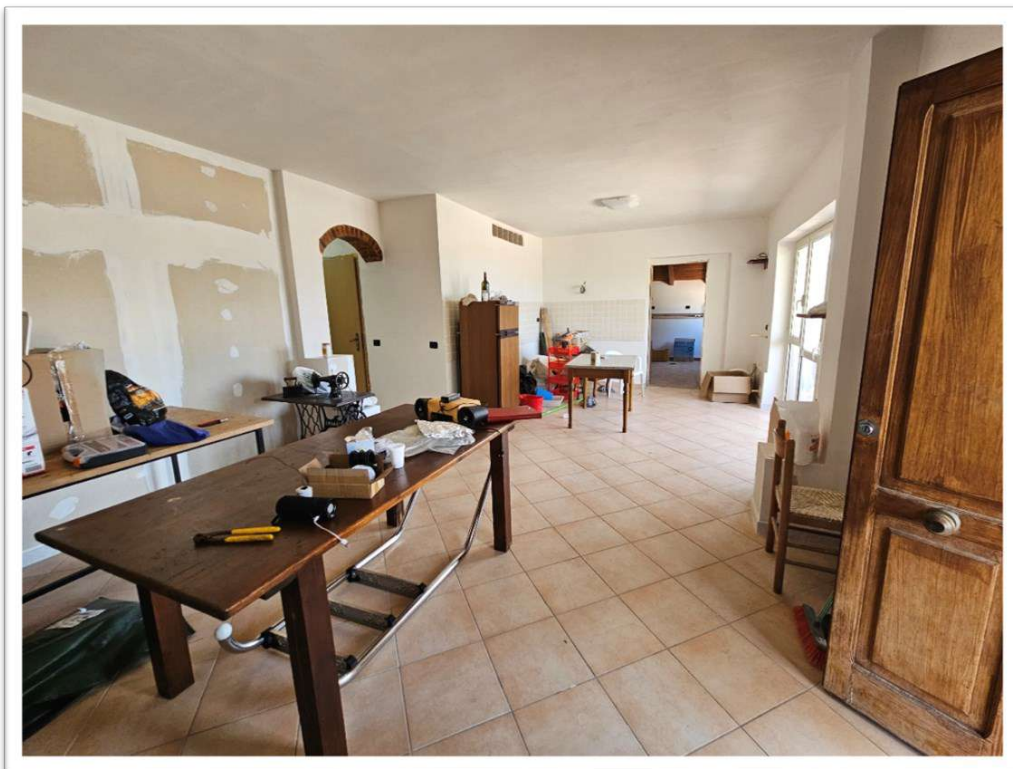
**Foto 4** - Vista prospetto Nord/Est



**IMMOBILE DI CUI AL SUB 1**



**Foto 5** –Particolare ingresso



**Foto 6** –Vano soggiorno/pranzo







Foto 7 – Vano cucina

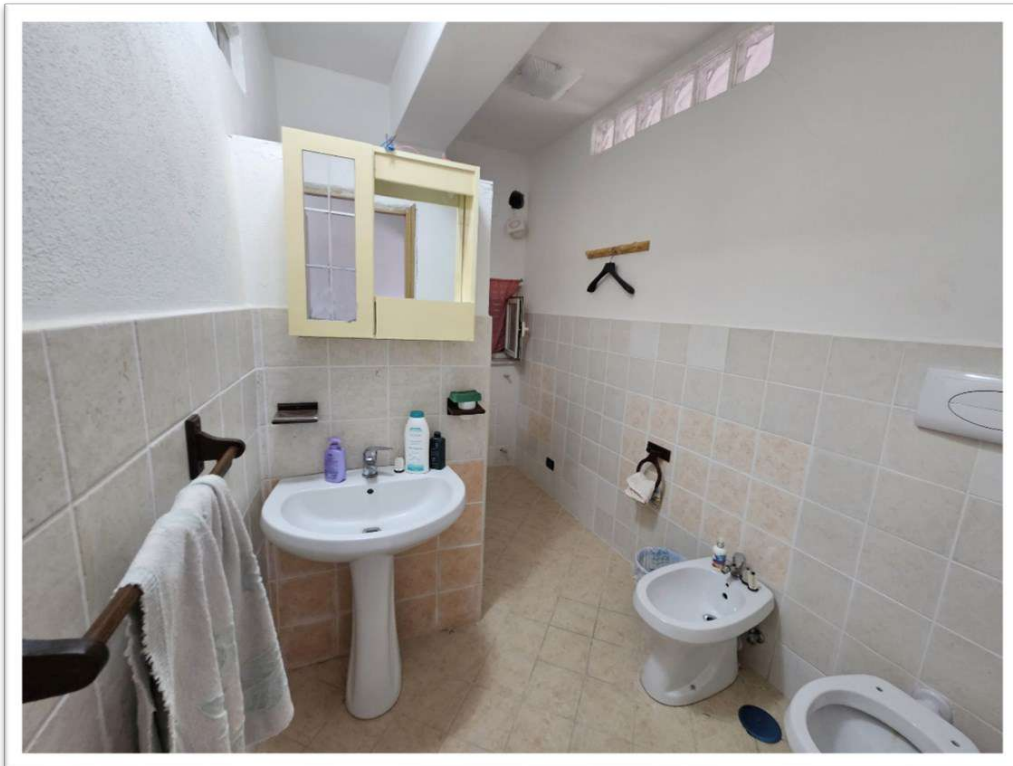


Foto 8 – Bagno



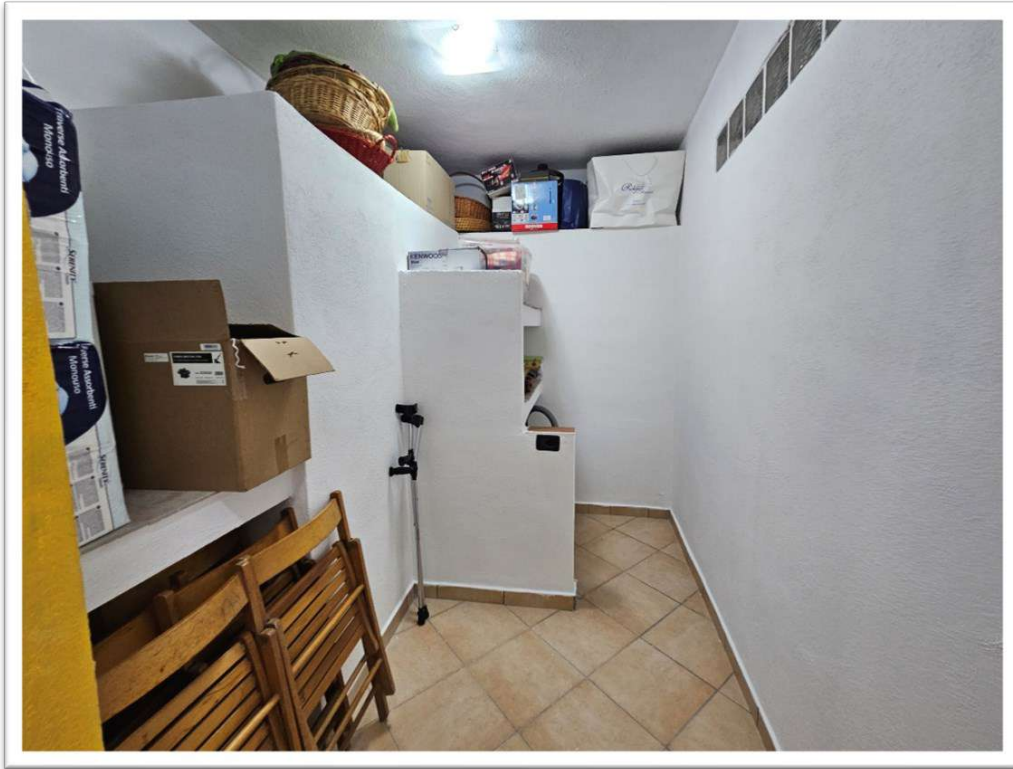


Foto 9 – Ripostiglio

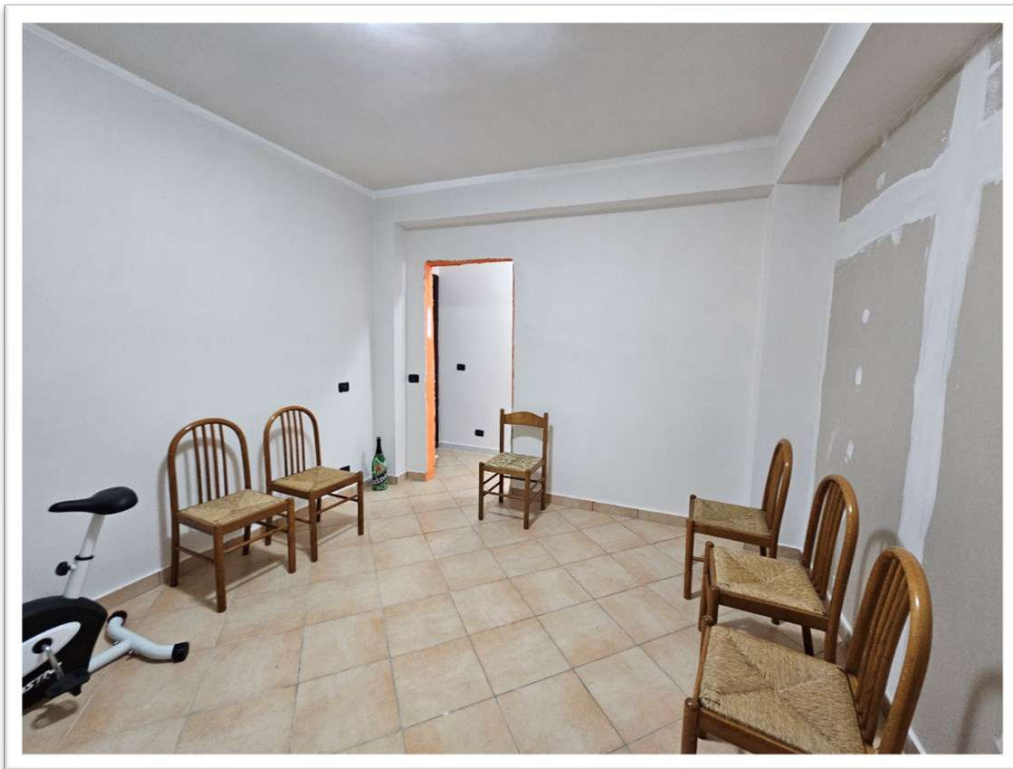


Foto 10 – Camera





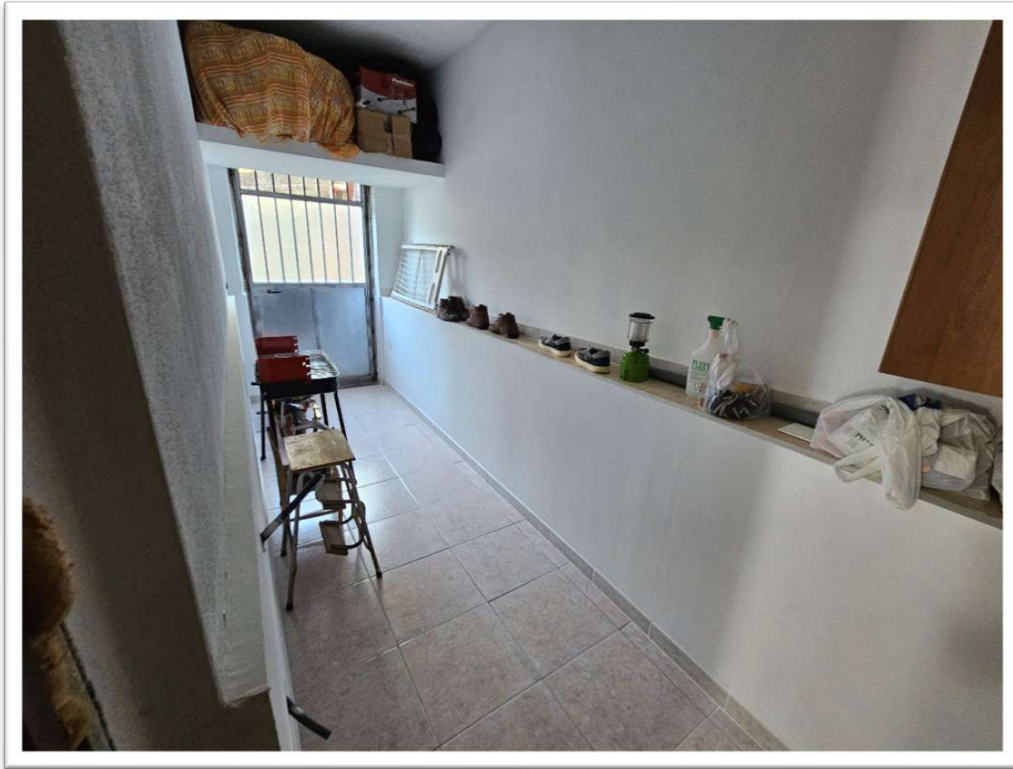


Foto 11 – Disimpegno con ingresso secondario

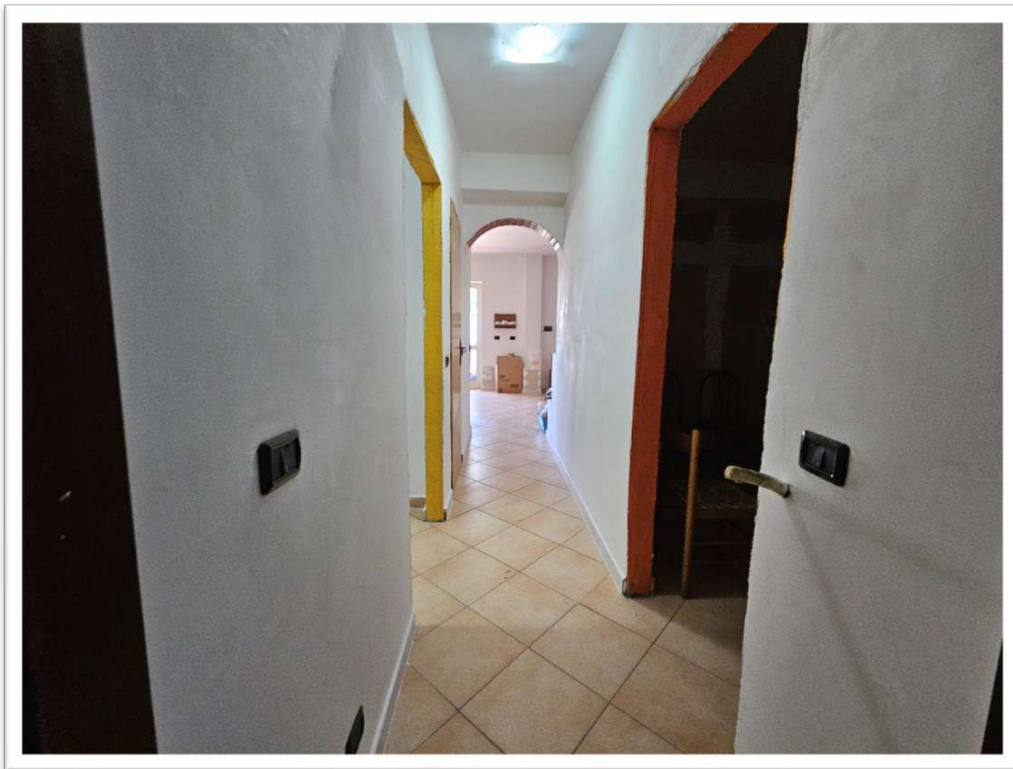


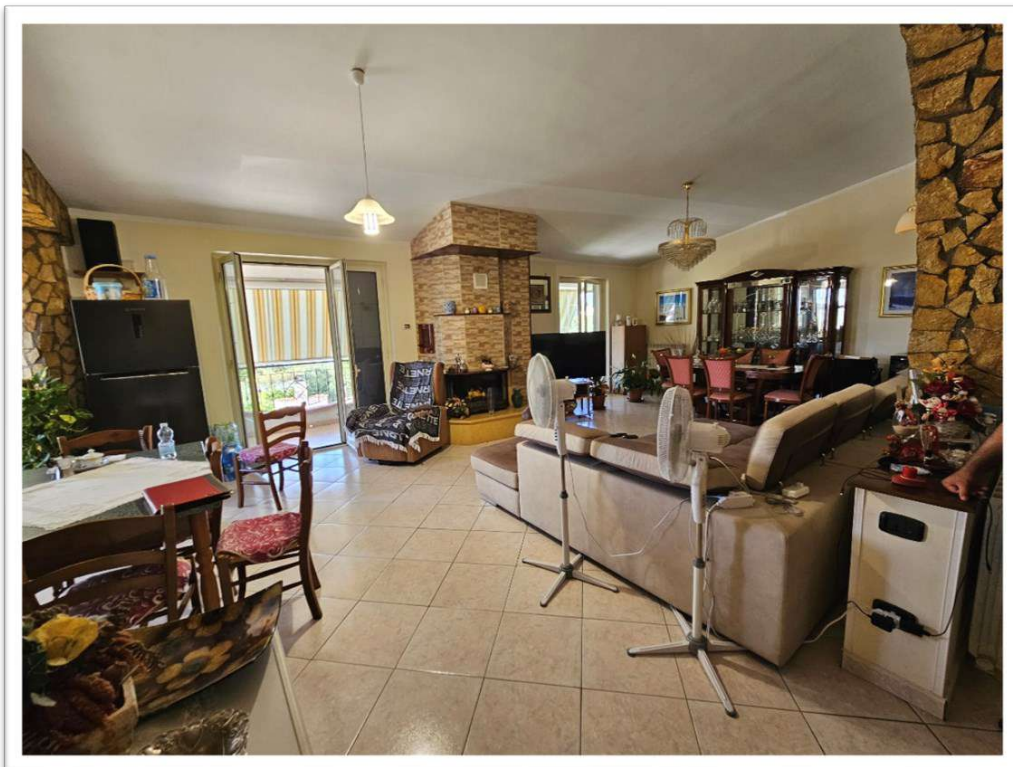
Foto 12 – Corridoio



**IMMOBILE DI CUI AL SUB 2**



**Foto 13 – Ingresso**



**Foto 14 – Soggiorno/pranzo e salotto**





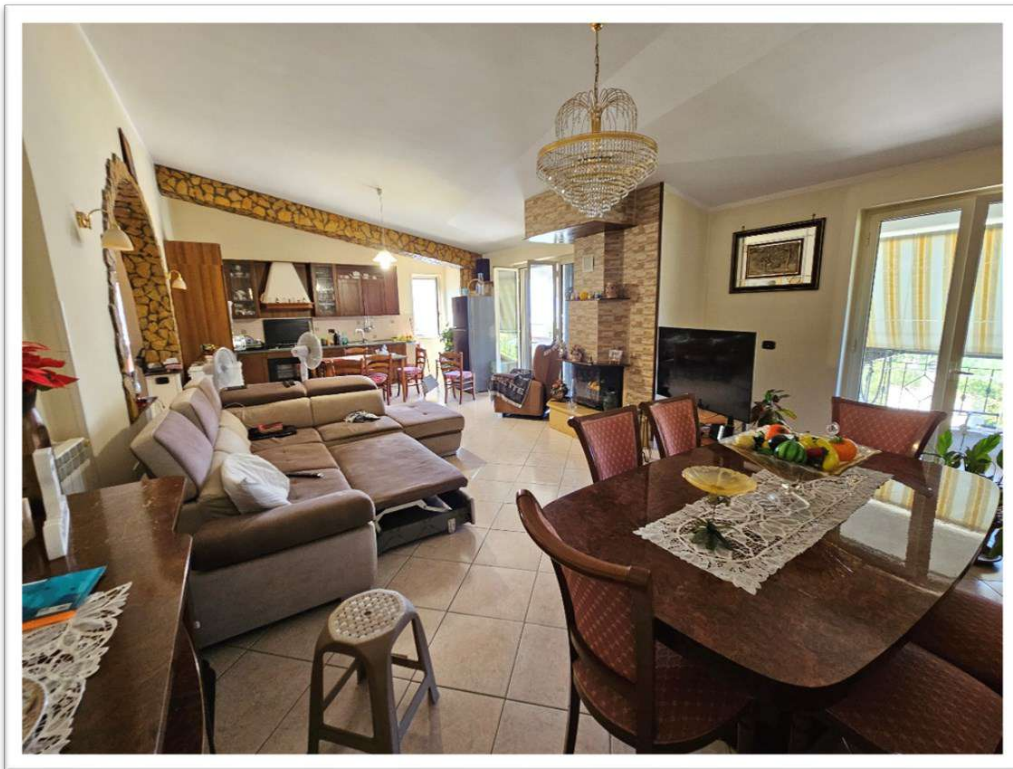


Foto 15 – Soggiorno/pranzo e salotto



Foto 16 – Soggiorno/pranzo – salotto e cucina



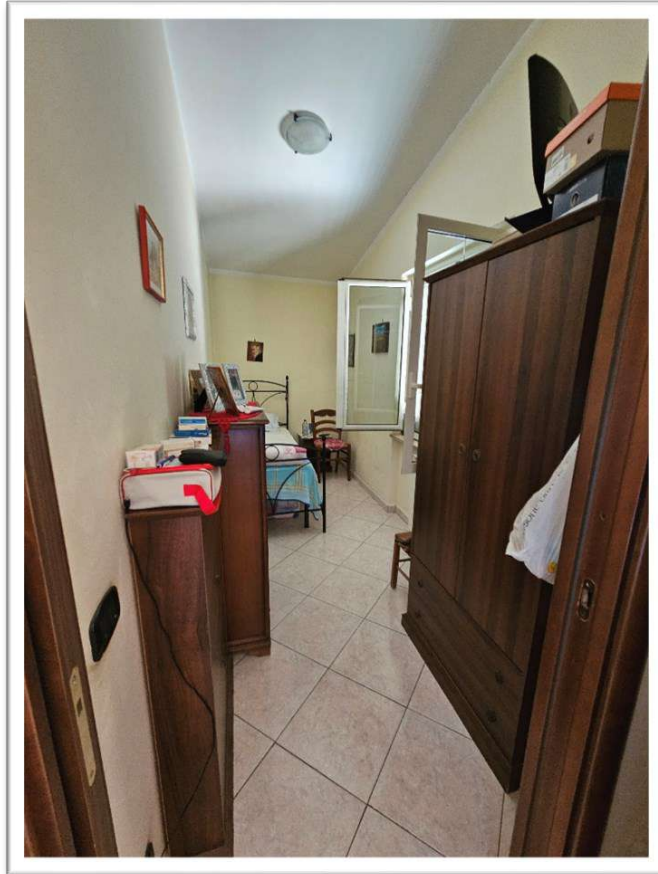


Foto 17 – Camera da letto 1

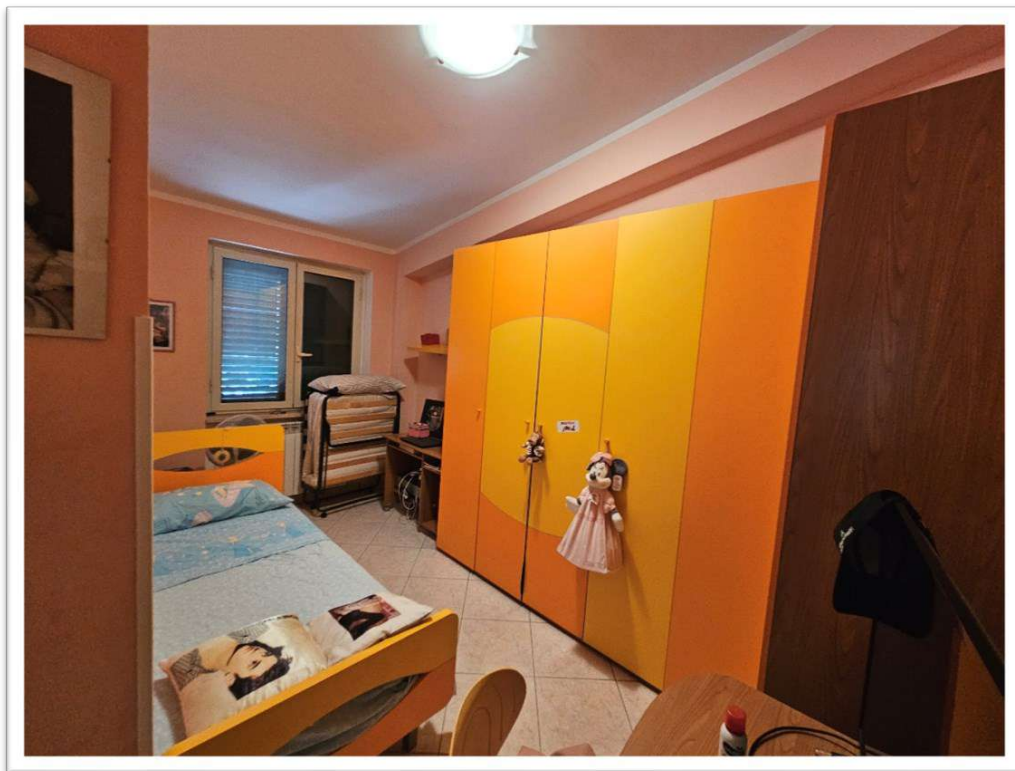


Foto 18 – Camera da letto 2





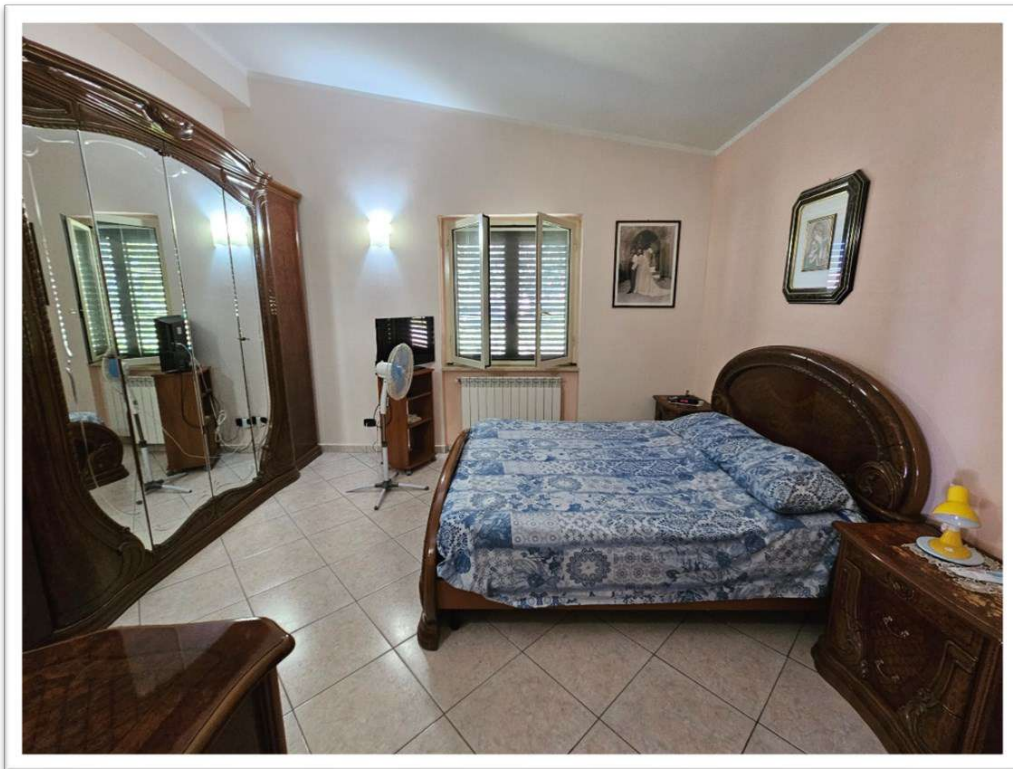


Foto 19 – Camera da letto matrimoniale



Foto 20 – Bagno della camera da letto matrimoniale





Foto 21 – Balcone

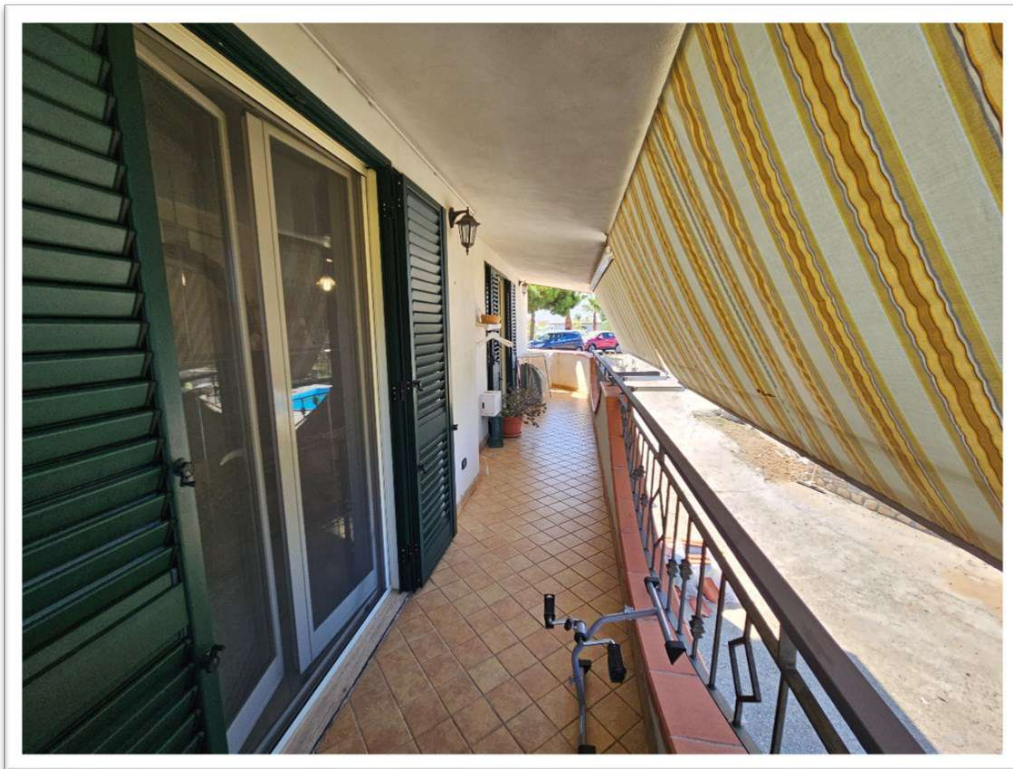


Foto 22 – Balcone

