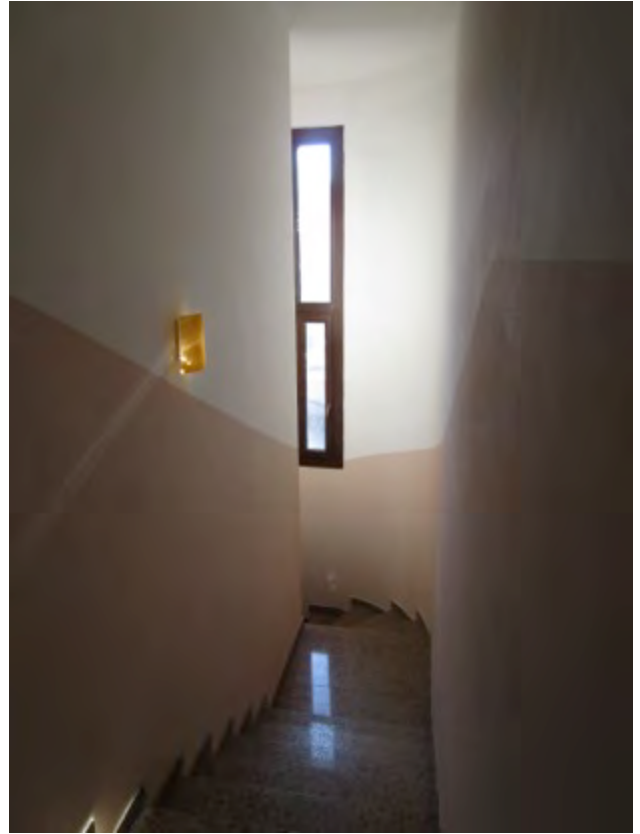




35. Ingresso a P.T. per sub. 3.



36. Scala di collegamento tra piano terra a primo piano.

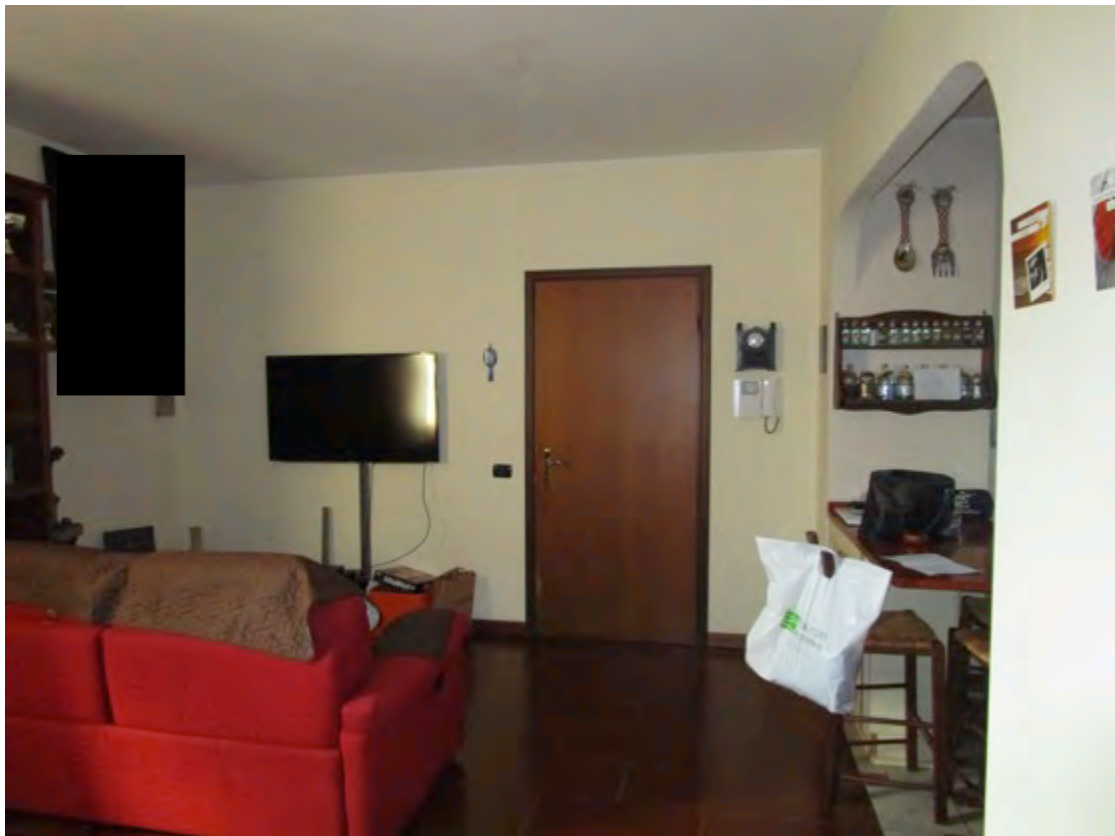


37. Soggiorno.





38. Soggiorno.

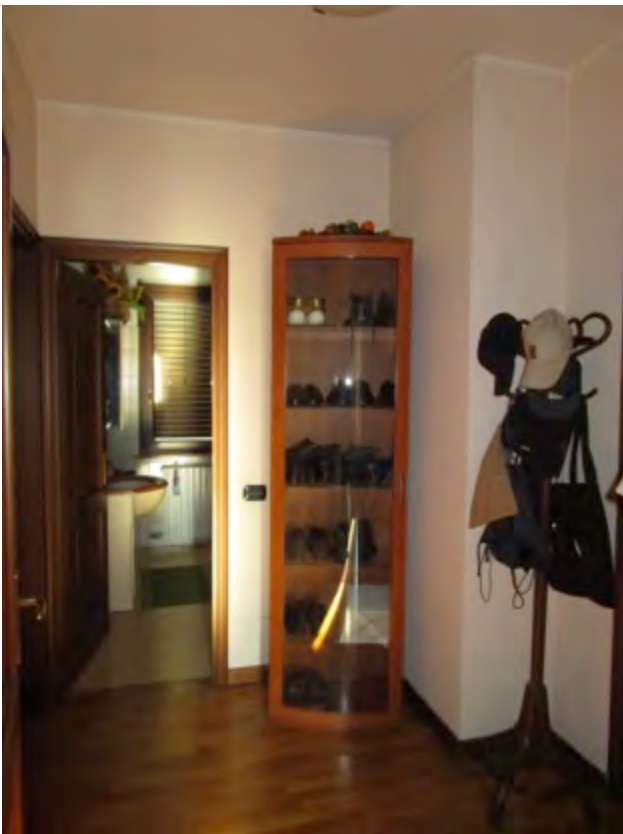


39. Soggiorno.





40. Angolo cottura.



41. Disimpegno.



42. Bagno 1.

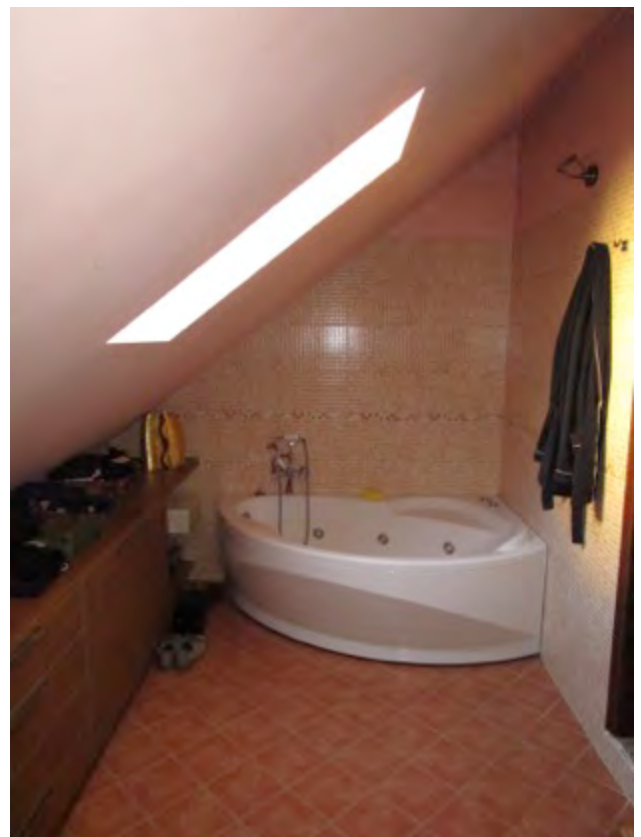




43. Camera padronale.



44. Bagno 2.



45. Bagno 2.





46. Seconda camera.

