

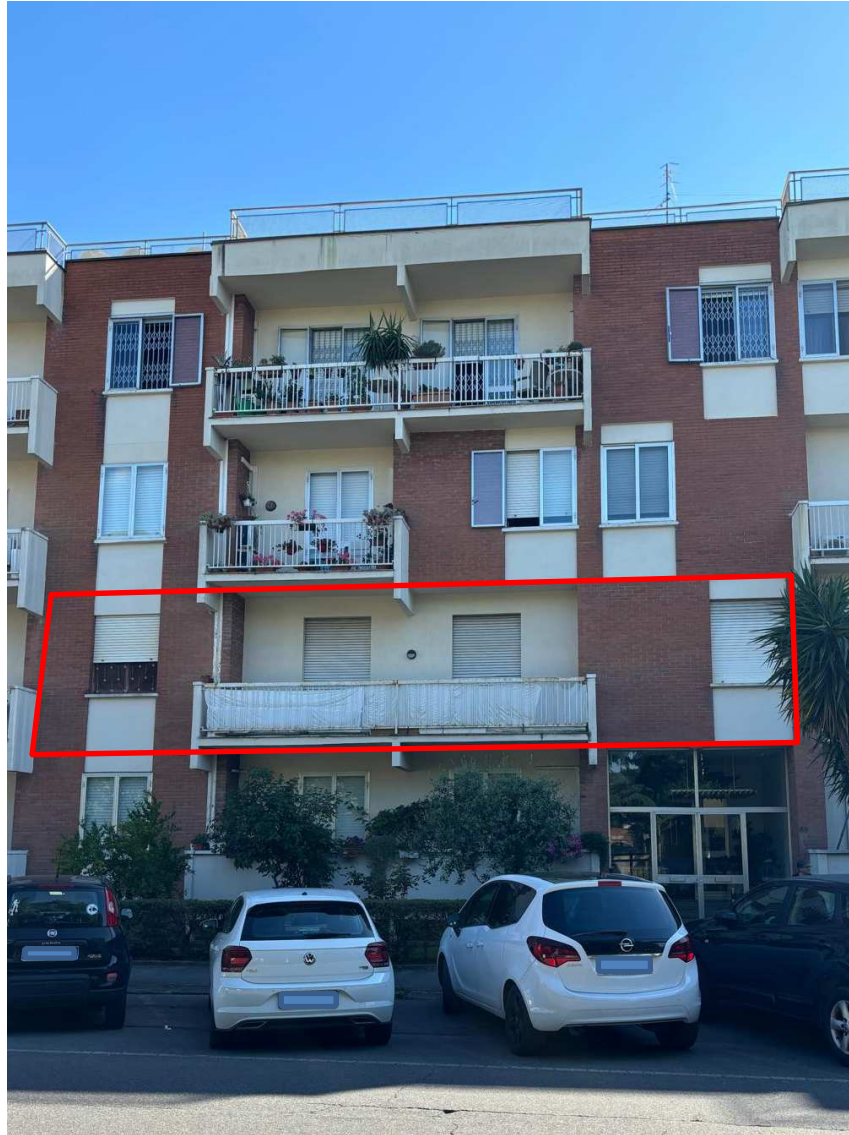
TRIBUNALE DI PRATO

Esecuzione Immobiliare n. R.G. 104/2023

Allegato E

Documentazione fotografica





Facciata principale su Via Cristoforo Colombo





Portone di ingresso condominiale





Ingresso condominiale



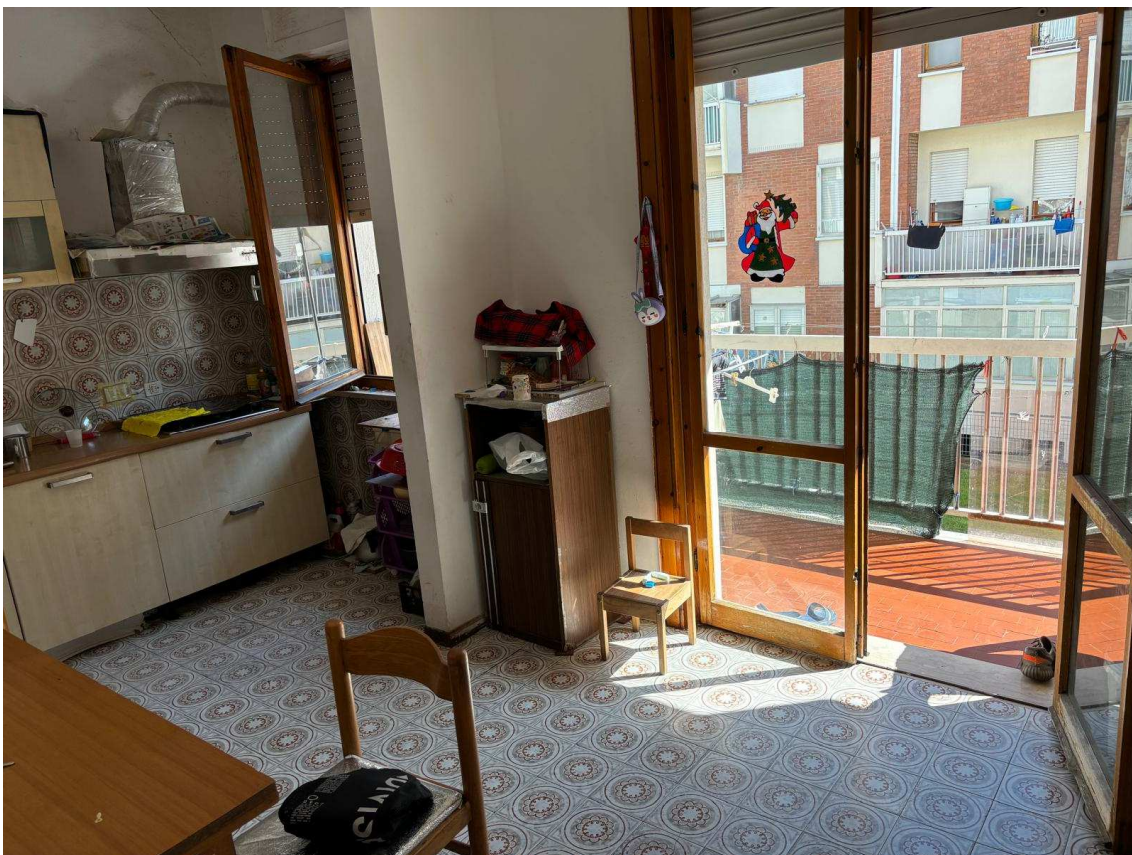


Porta di accesso all'appartamento





Ingresso

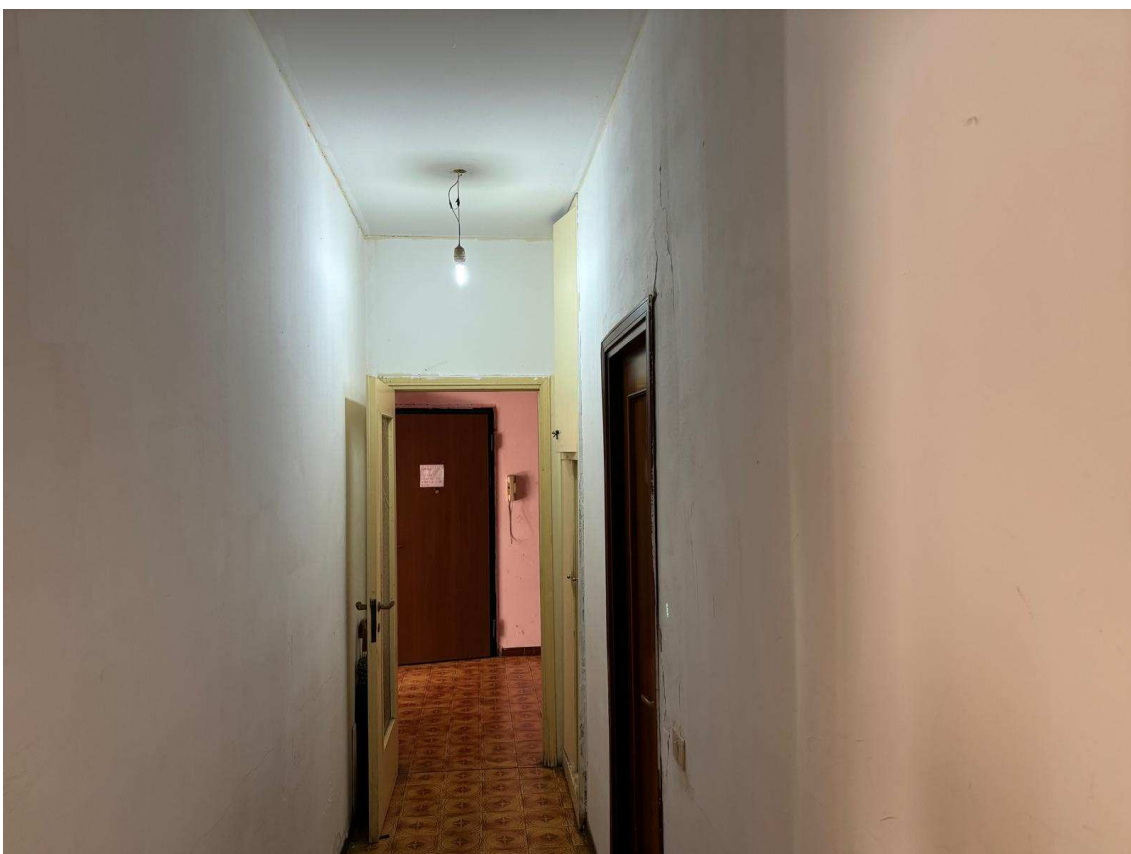


Tinello / Cucina



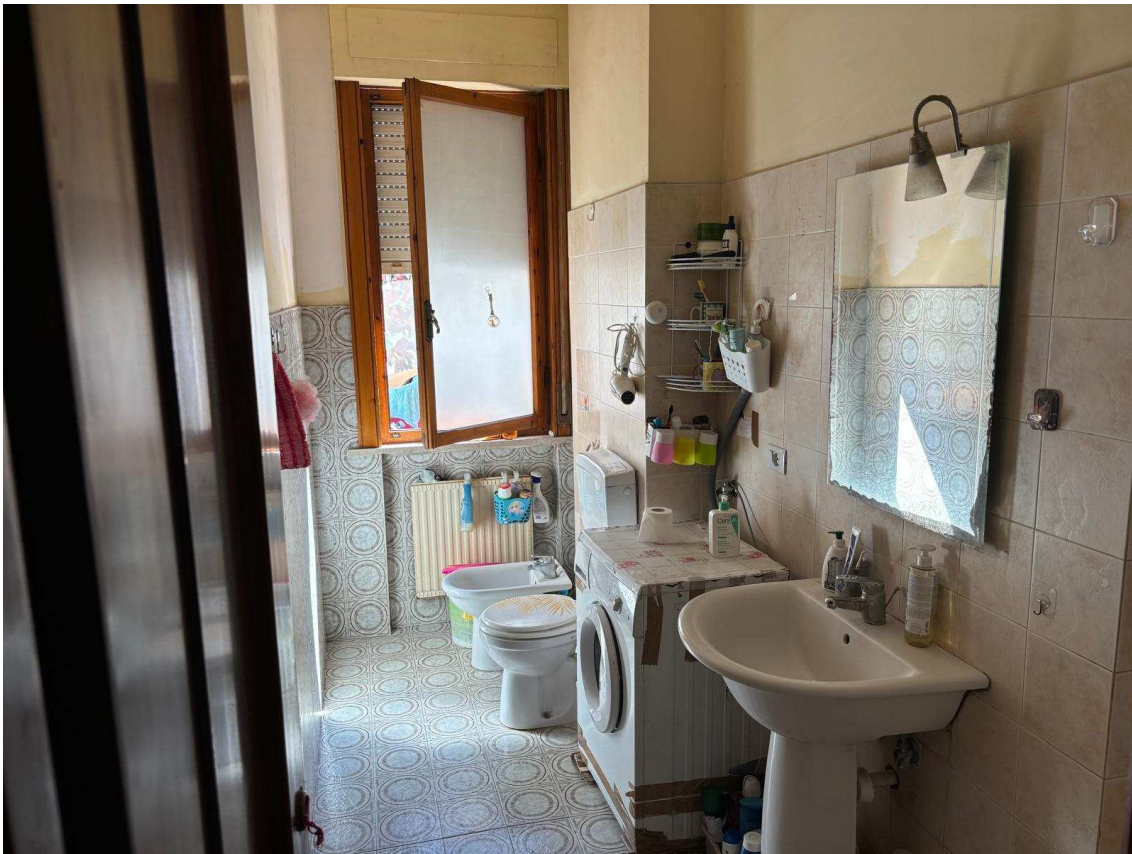


Terrazzo posteriore a servizio del tinello / cucina



Corridoio di accesso alle camere e al servizio igienico



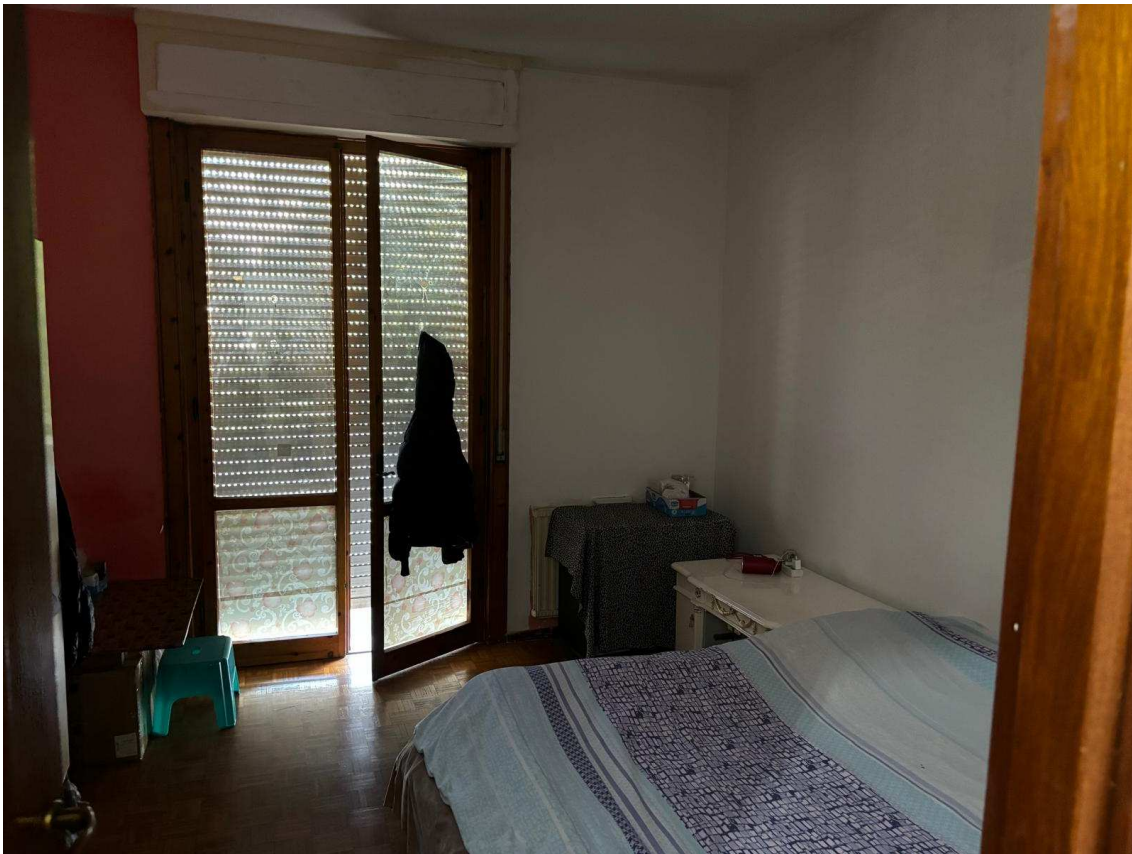


Servizio igienico



Camera





Camera

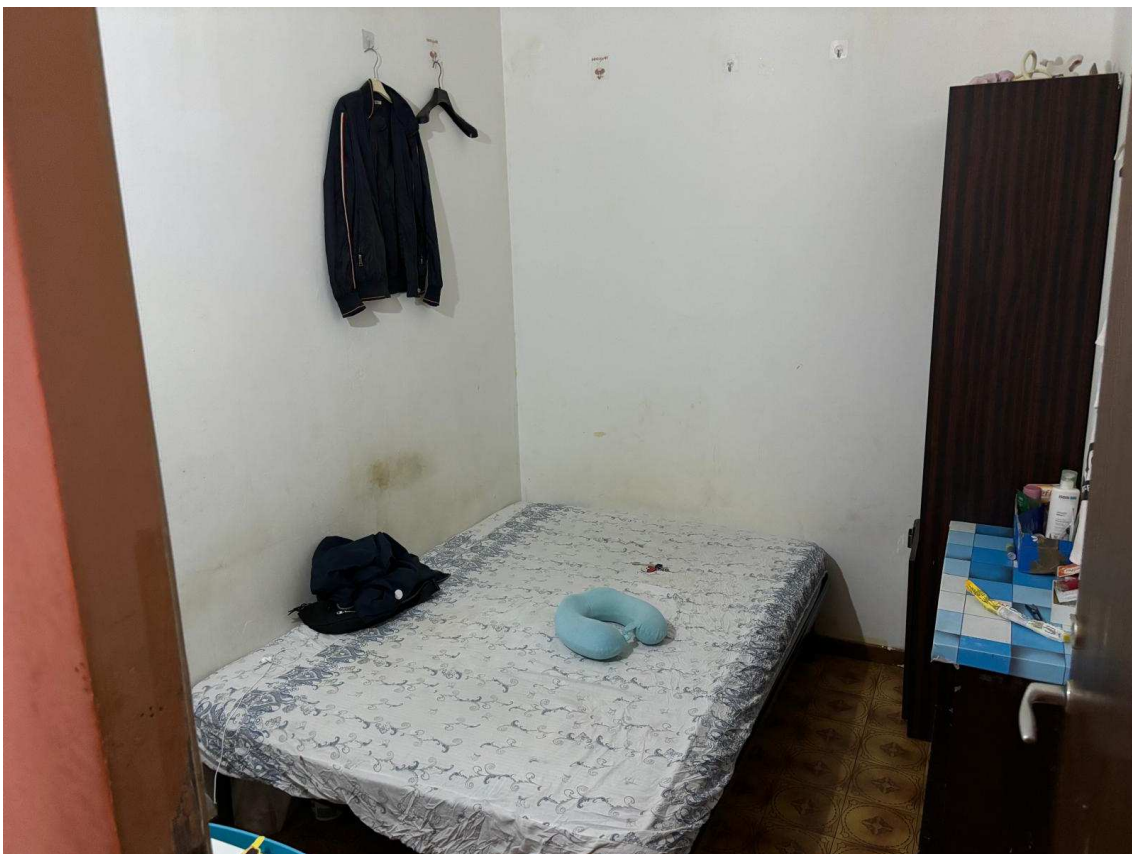


Camera



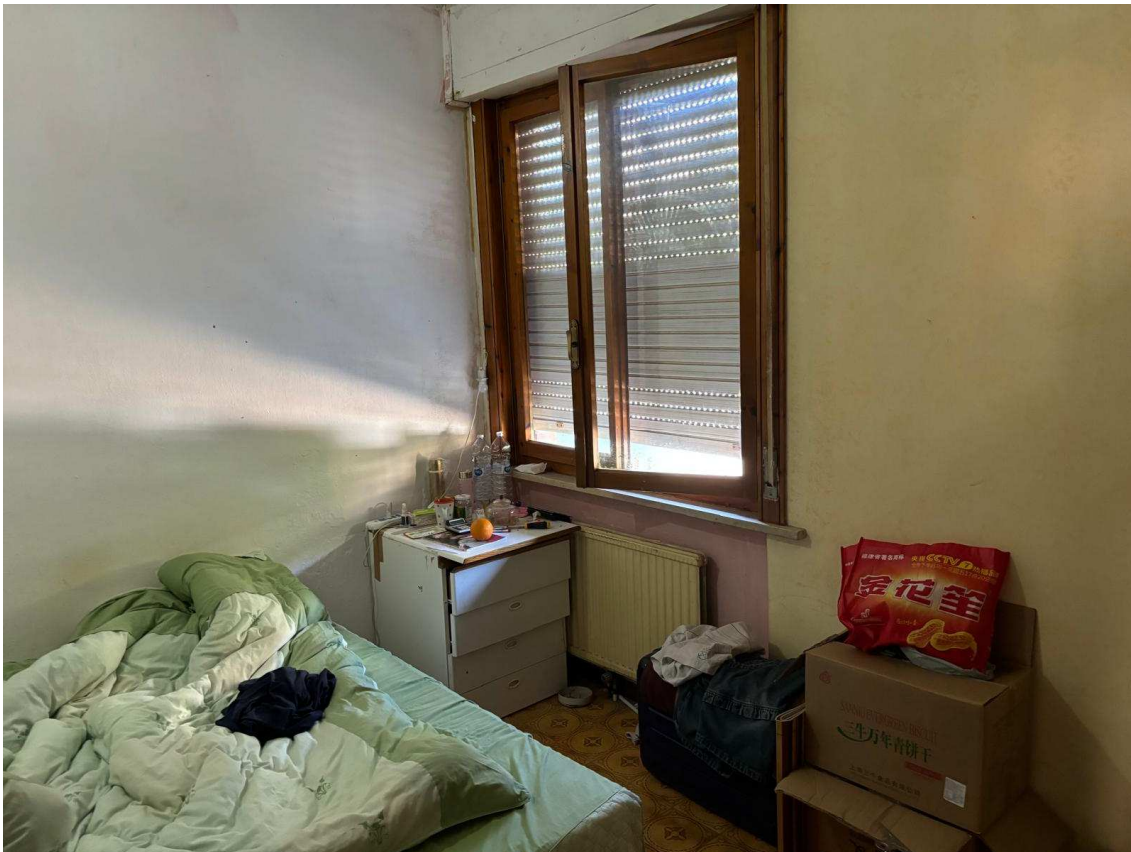


Disimpegno

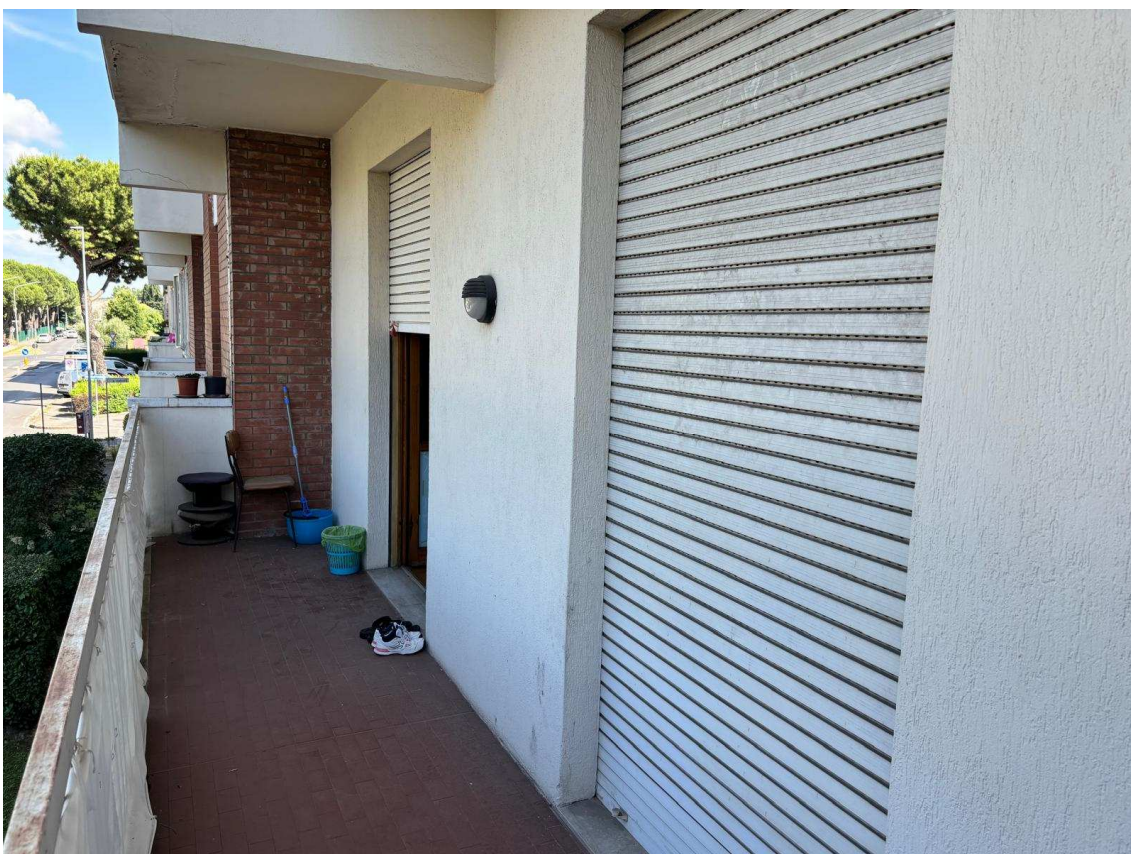


Locale adibito a camera





Locale adibito a camera



Terrazzo anteriore a servizio delle camere





Corridoio condominiale di accesso alla cantina





Cantina

