



Figura 1 – Panoramica Immobile



Figura 2 - Panoramica Via Goldoni





Figura 3 - Ingresso Via San Francesco



Figura 4 – Scala Piano Terra



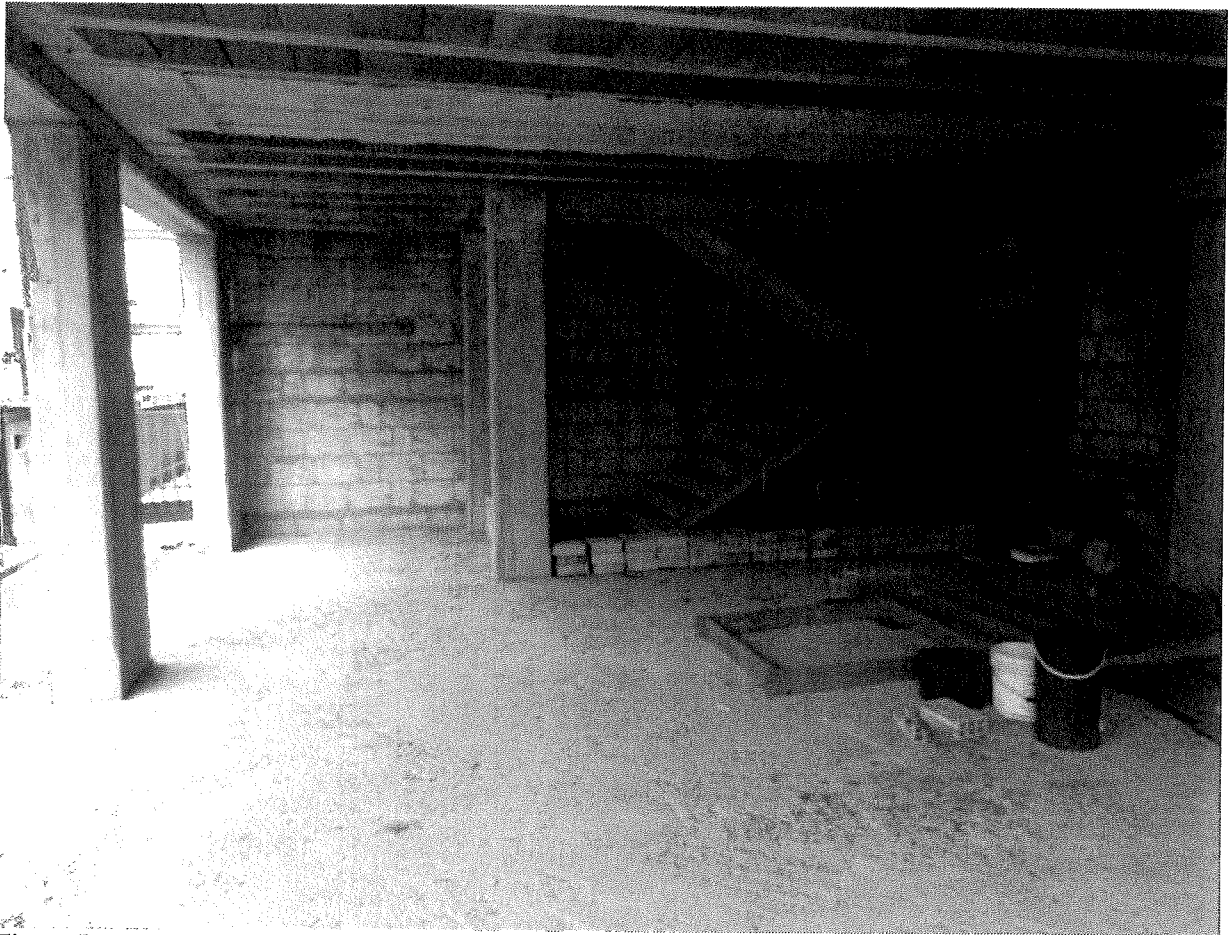


Figura 5 – Piano Primo



Figura 6 – Piano Primo





Figura 7 – Piano Primo



Figura 8 – Scala Piano Primo





Figura 9 – Piano Secondo

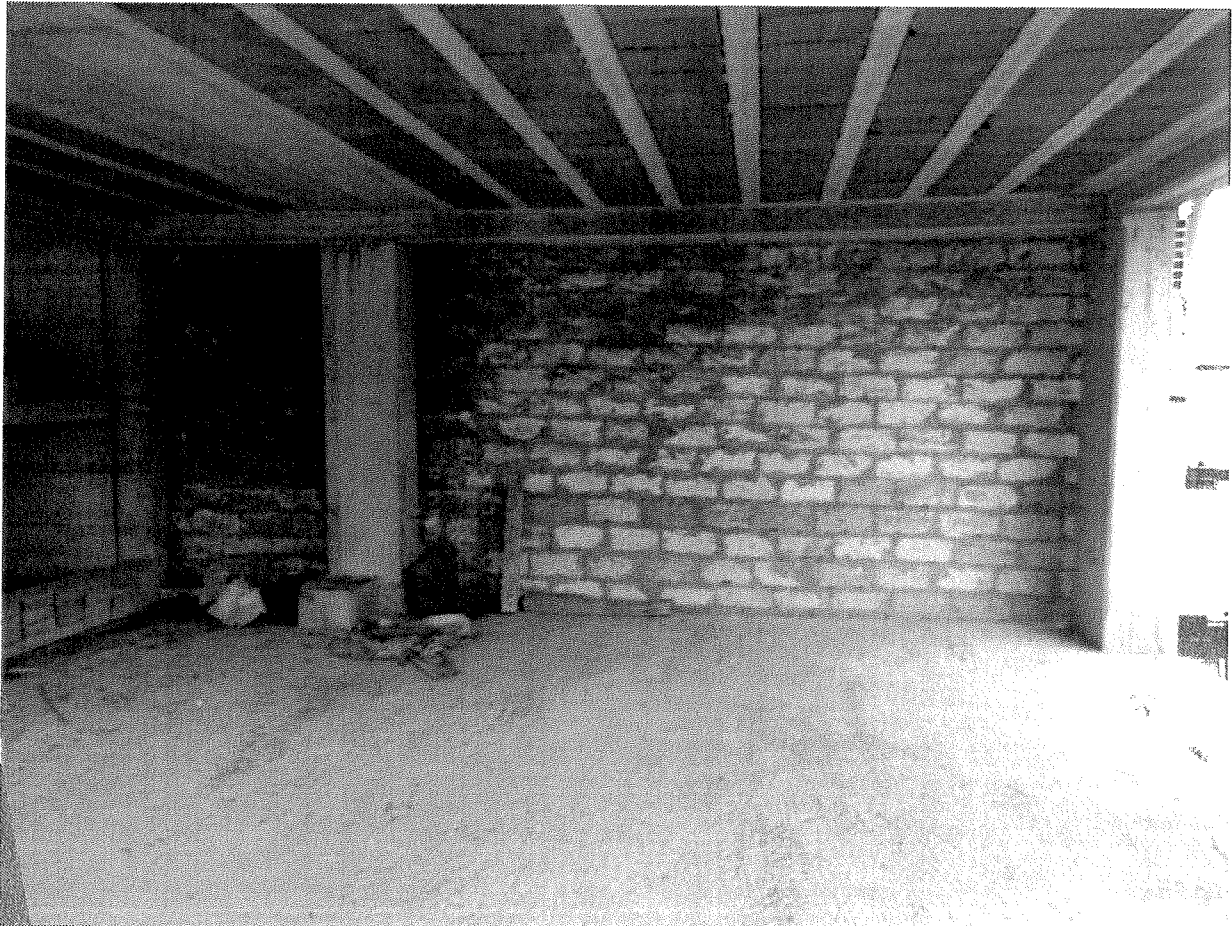


Figura 10 - Piano Secondo



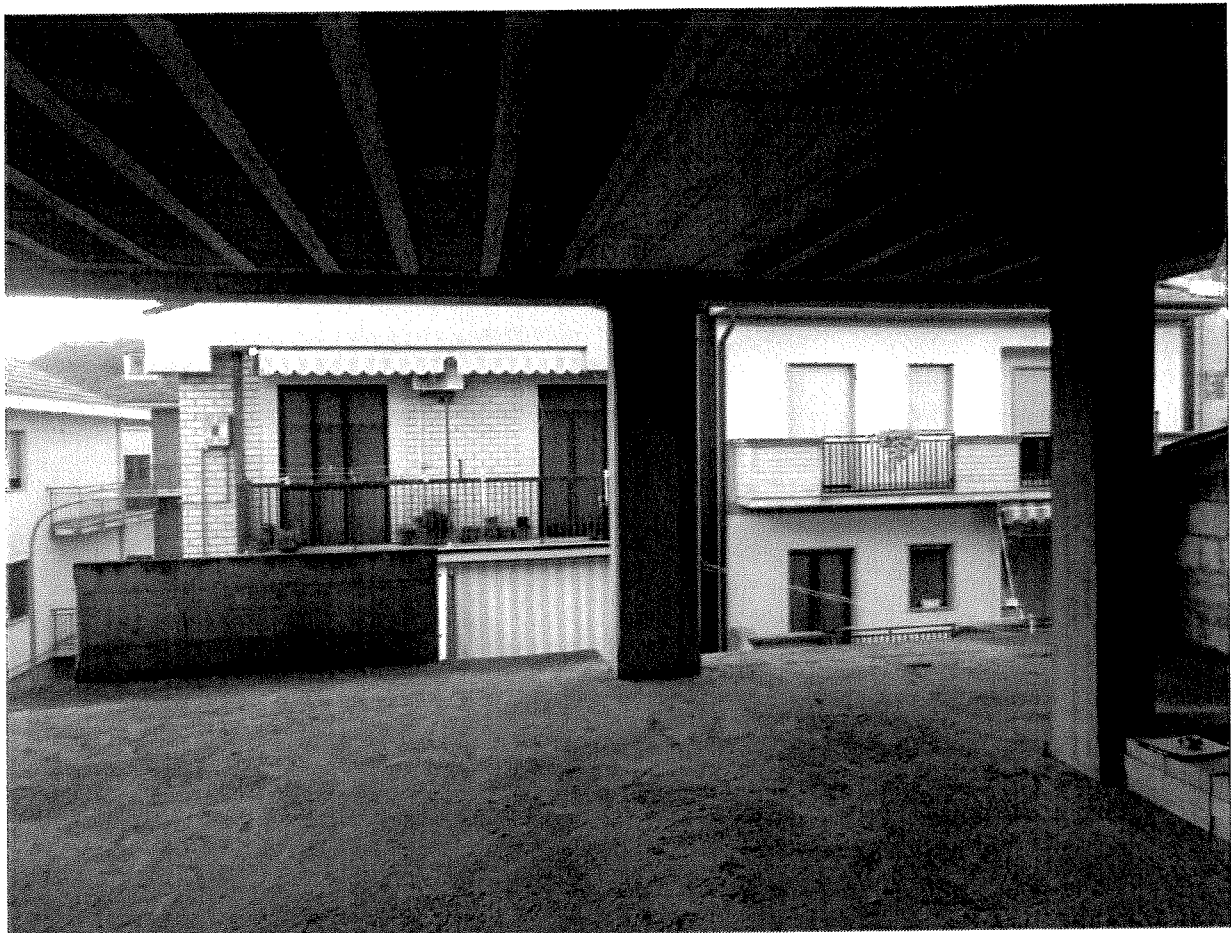


Figura 11 – Piano Secondo



Figura 12 – Scala Piano Secondo



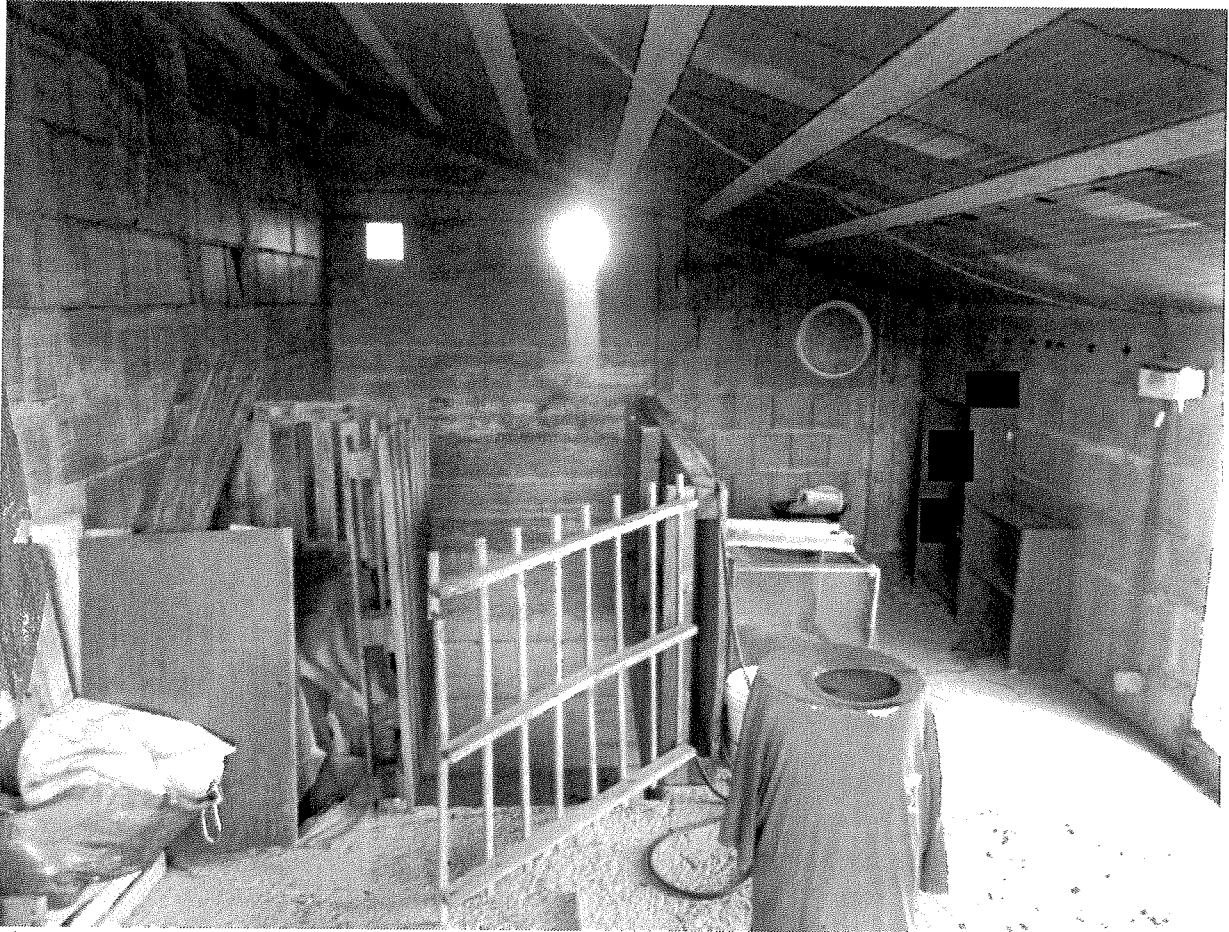


Figura 13 – Piano Sottotetto

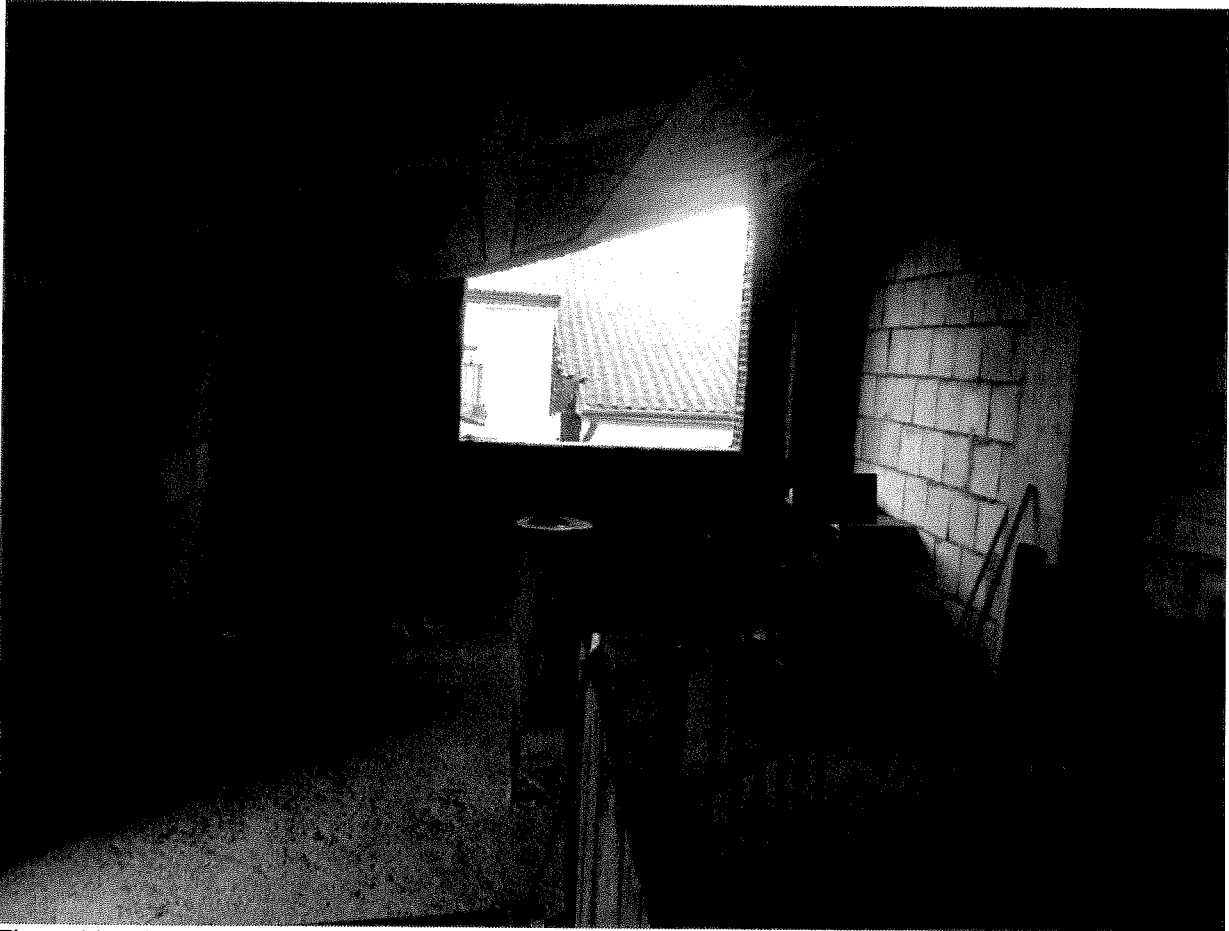


Figura 14 – Piano Sottotetto





Figura 15 – Scala Piano Sottotetto



Figura 16 – Porta Accesso Terrazzo





Figura 17 - Terrazzo

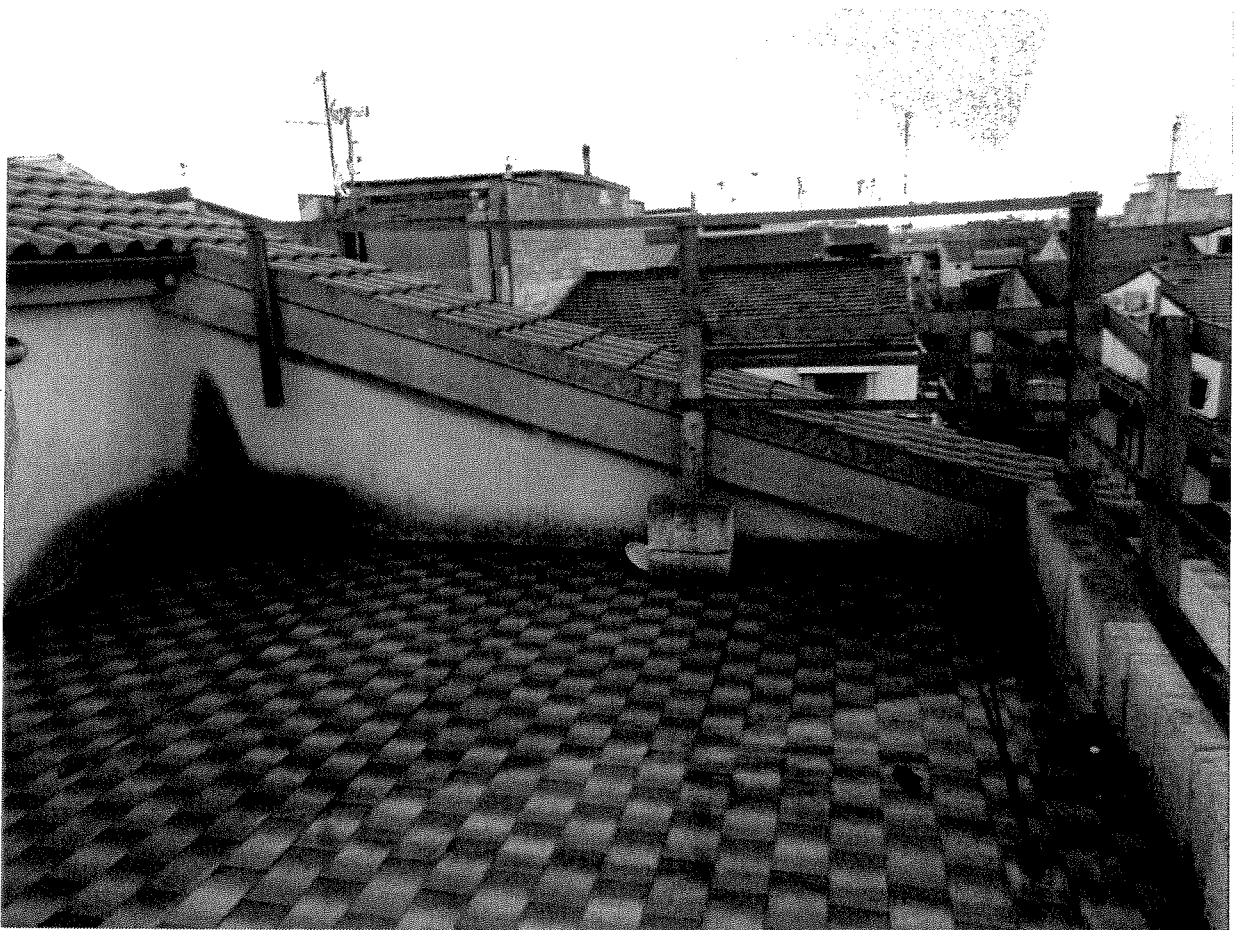


Figura 18 – Terrazzo

