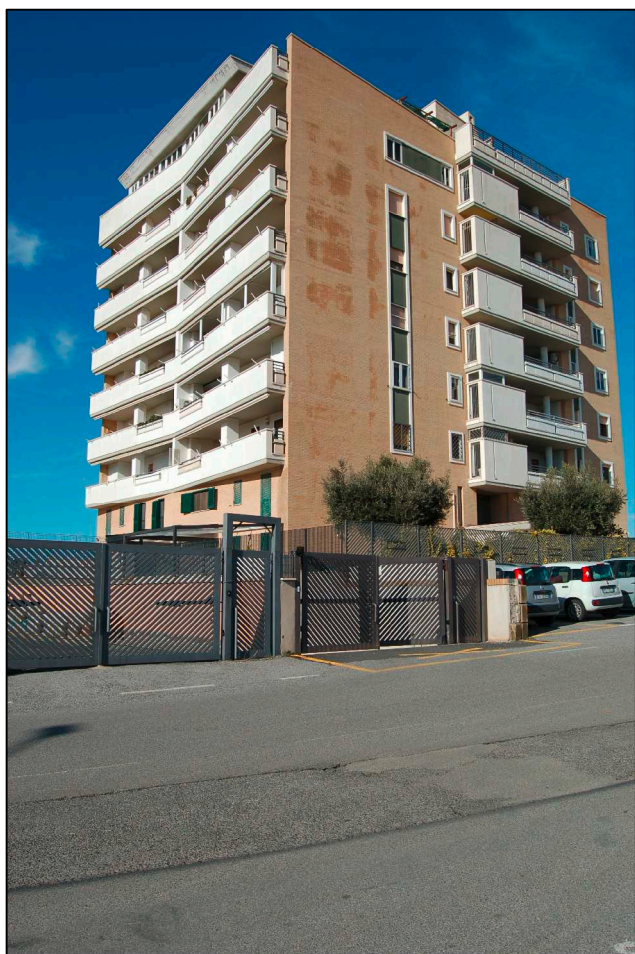
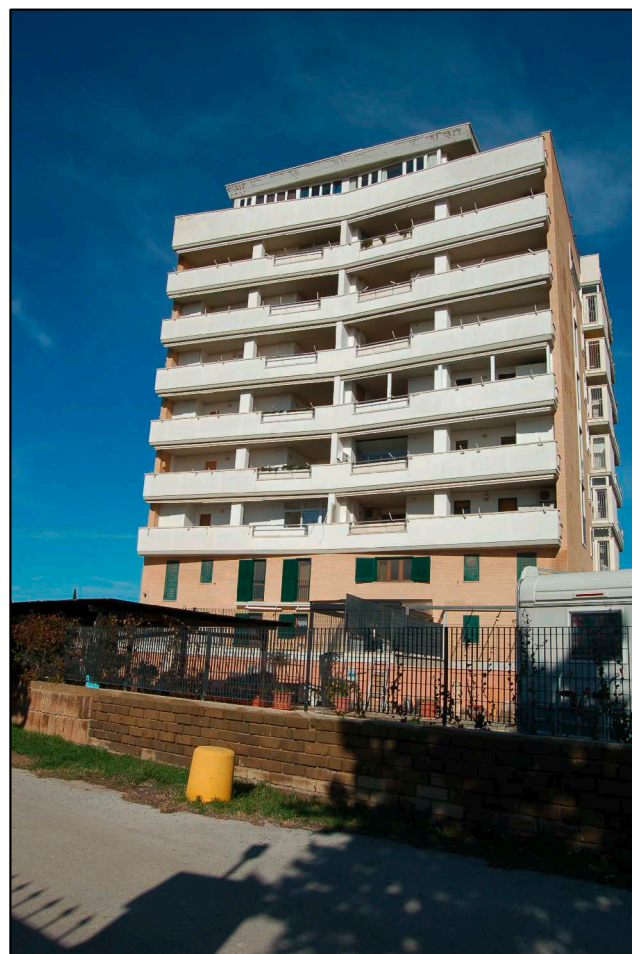


ALLEGATO 13



Prospetto su Via N.S.Liborio



Prospetto sul retro



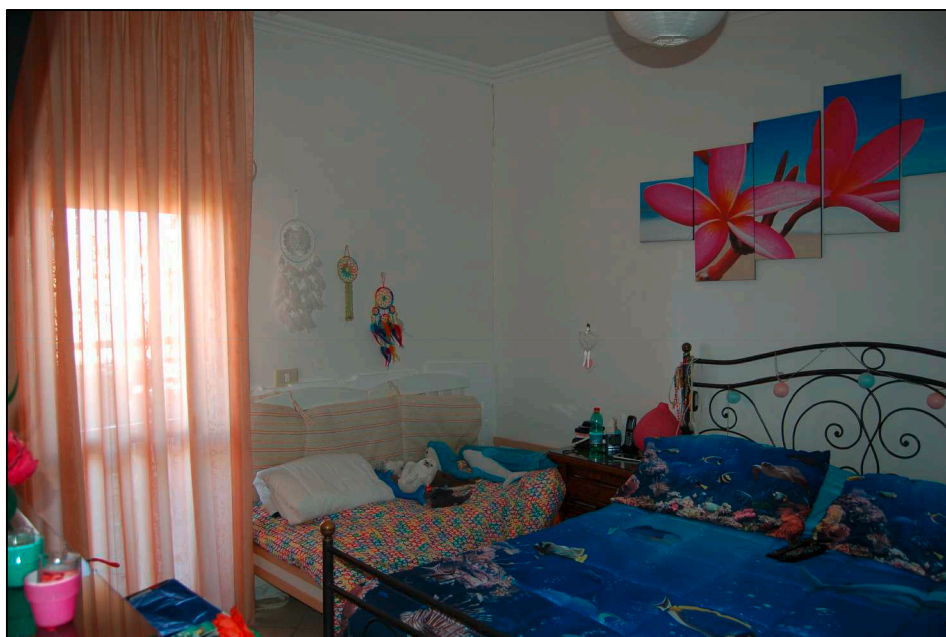
Ingresso al condominio



Cucina



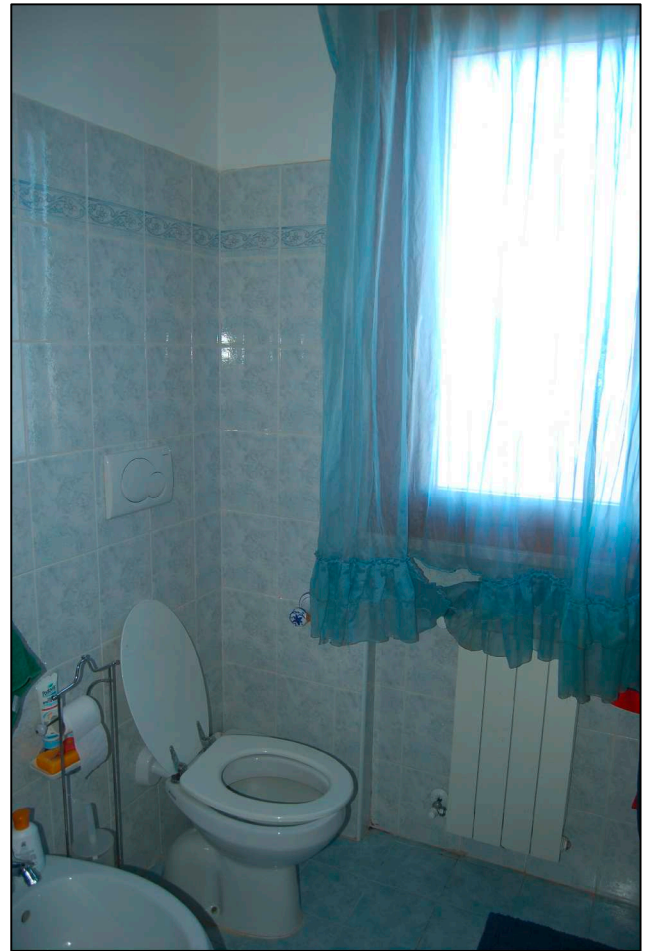
Bagno 1



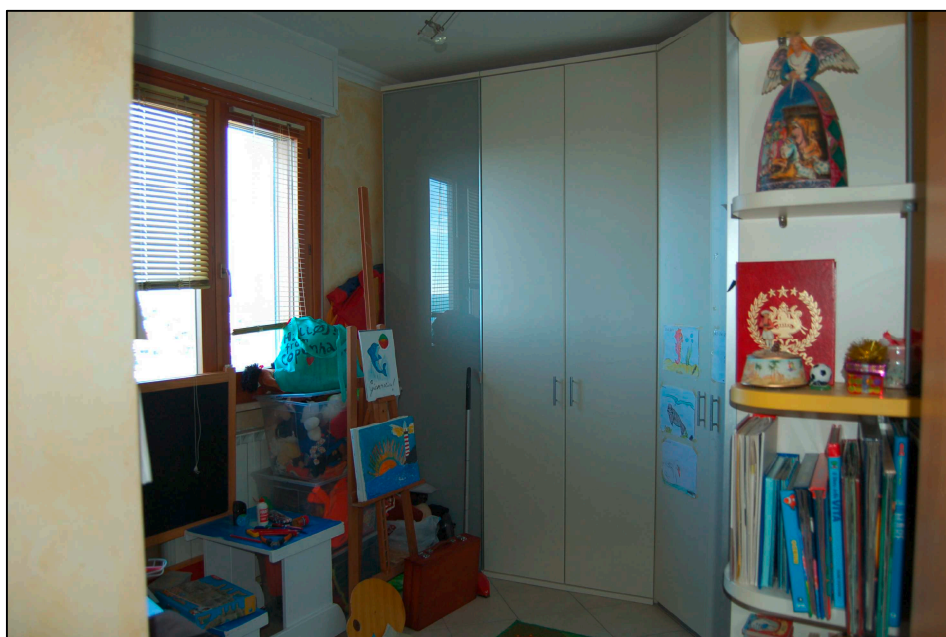
Letto 1



Bagno 2



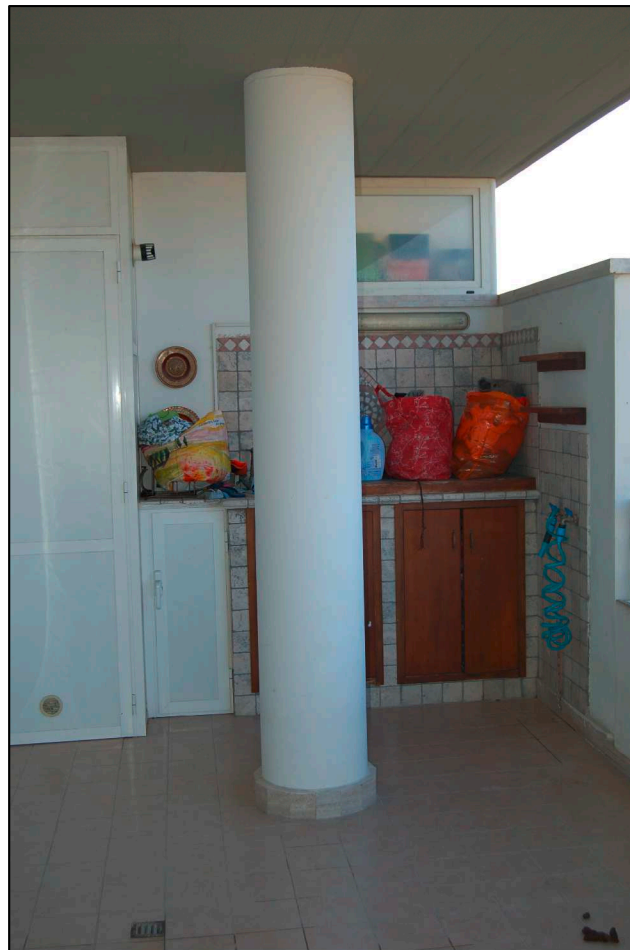
Bagno 2



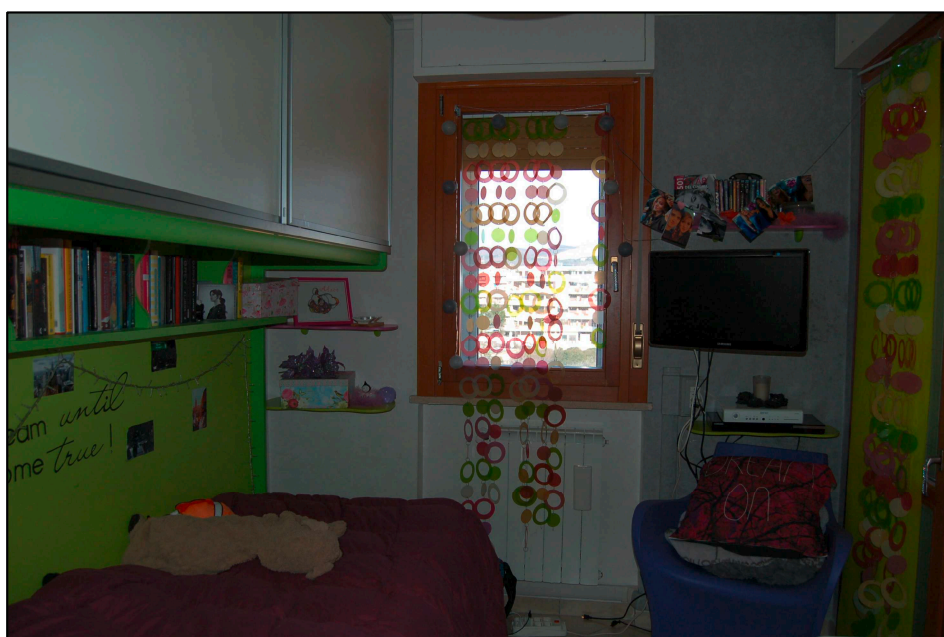
Letto 2



Letto 2



Balcone 1



Letto 3



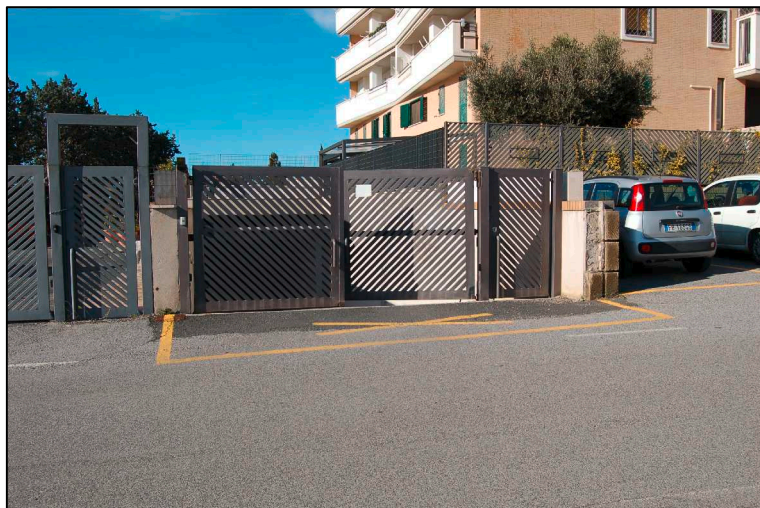
Balcone 1



Vista balcone 1



Balcone 2



Cancello ingresso al garage ps1



Garage



Soppalco