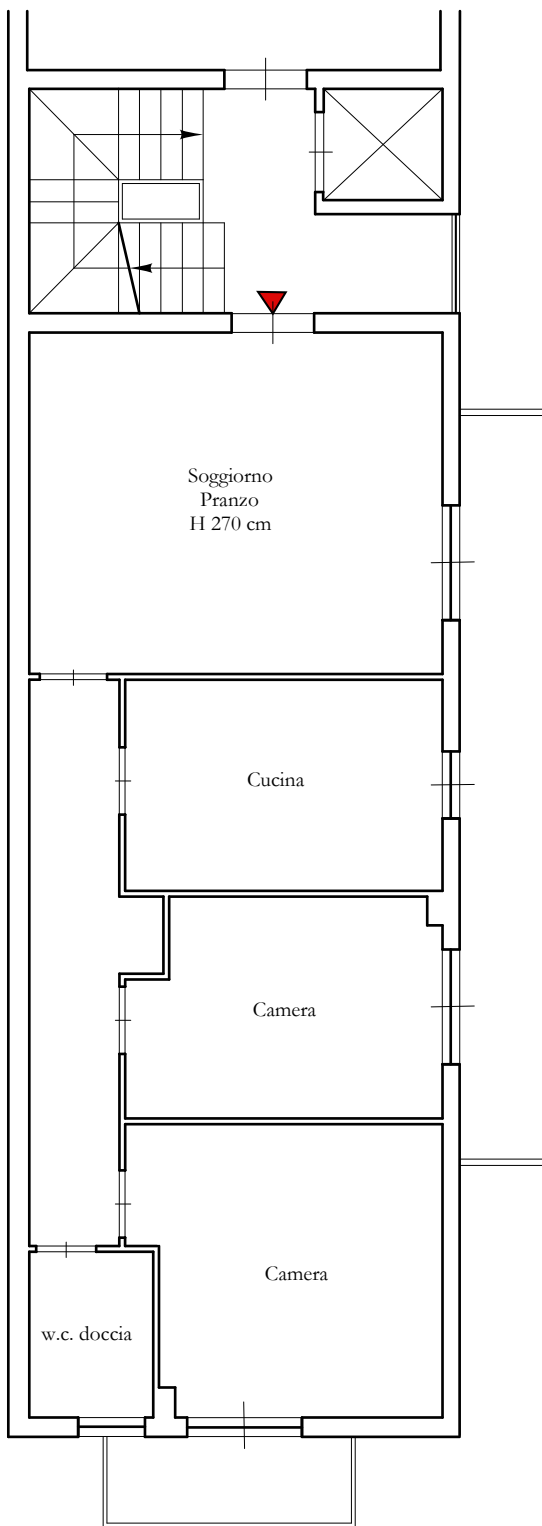


# PLANIMETRIA ATTUALE

VIA BADIA N. 259/A-259/B - PALERMO  
SCALA C Piano Quarto - Foglio 39, P.lla 4597, sub 25

ALLEGATO  
PLANIMETRIA  
LOTTO 7

P.LLA 4729



SPAZI CONDOMINIALI COMUNI  
SUB 1

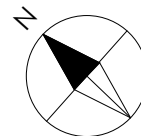
SUP. LORDA 88,00 mq

SUP. BALCONI  $3,95 + 12,20 = 16,15$  mq

SUP. POSTO AUTO = 12,50 mq

SUP. COMMERCIALE =  
 $88,00 + (16,15 \times 25\%) + (12,50 \times 20\%) = 94,53$  mq

SUB 1



Scala 1:100