



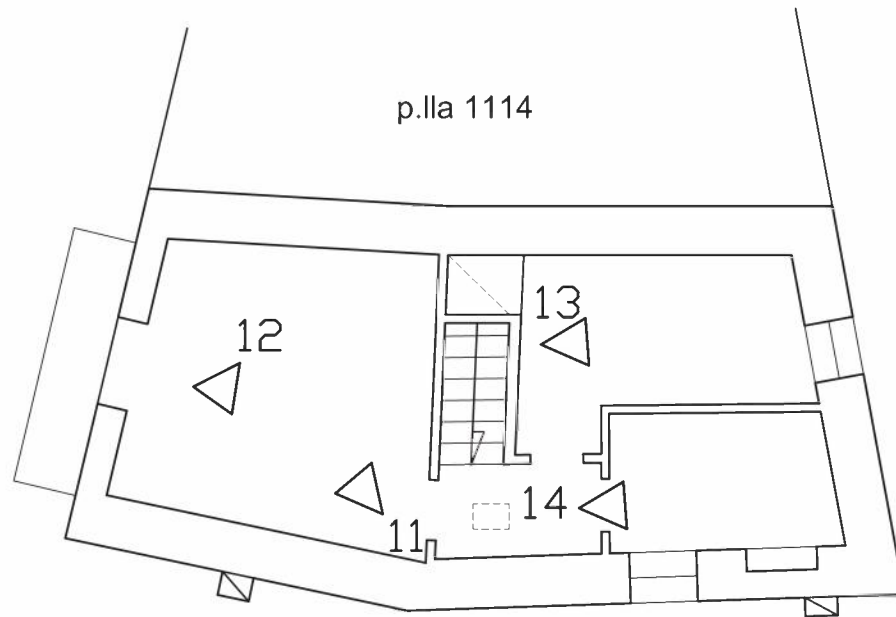
roto 1,2, 3, 4



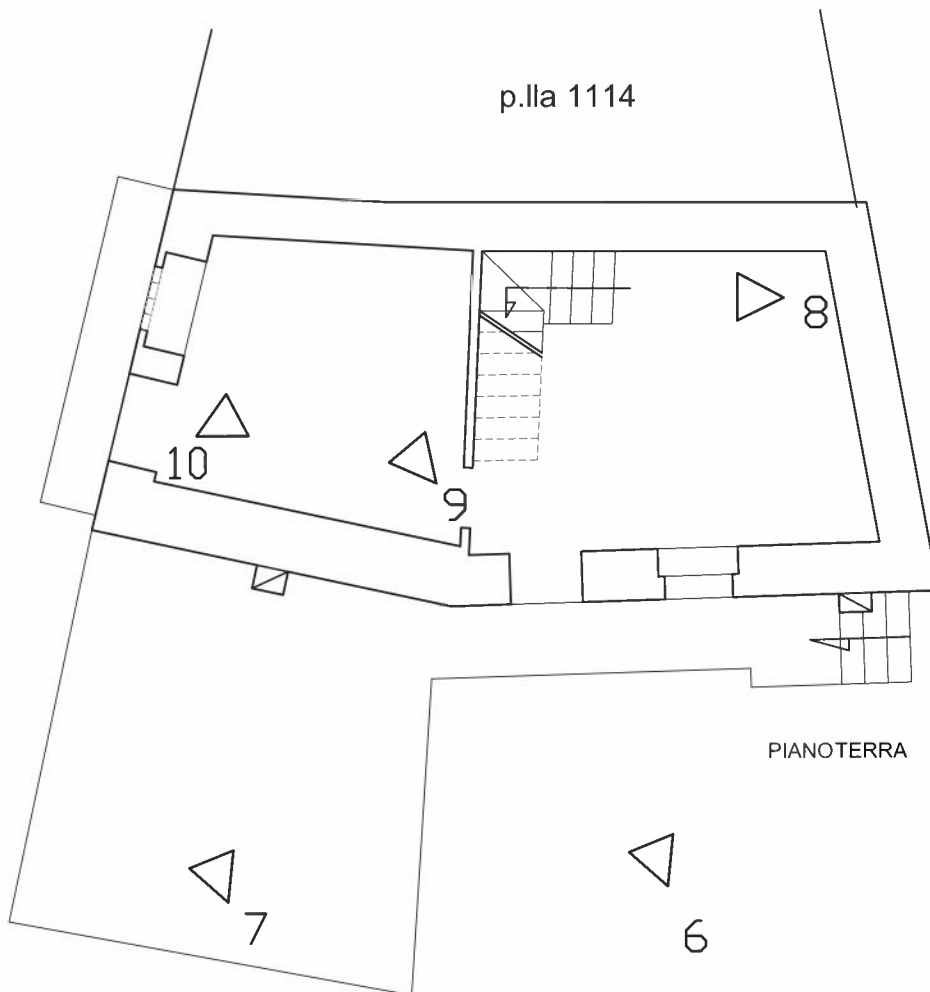


foto 5





PIANO PRIMO



PIANOTERRA



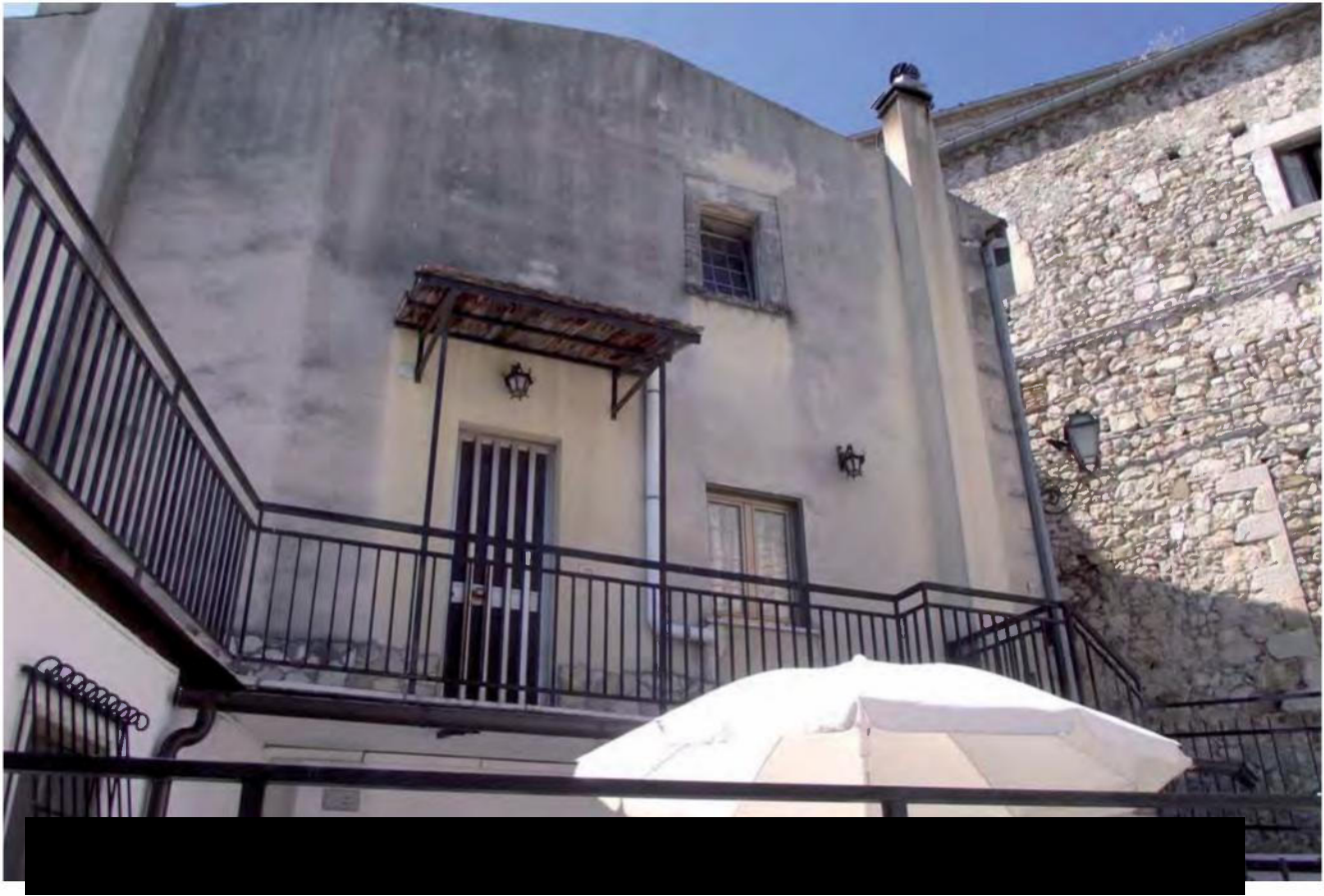


foto 6 e 7



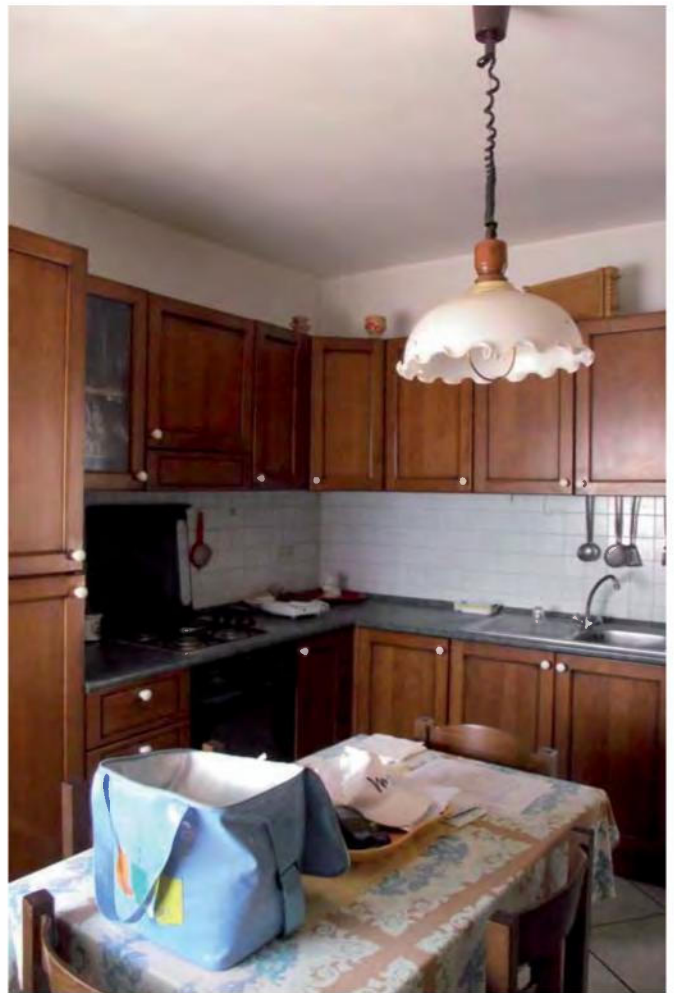
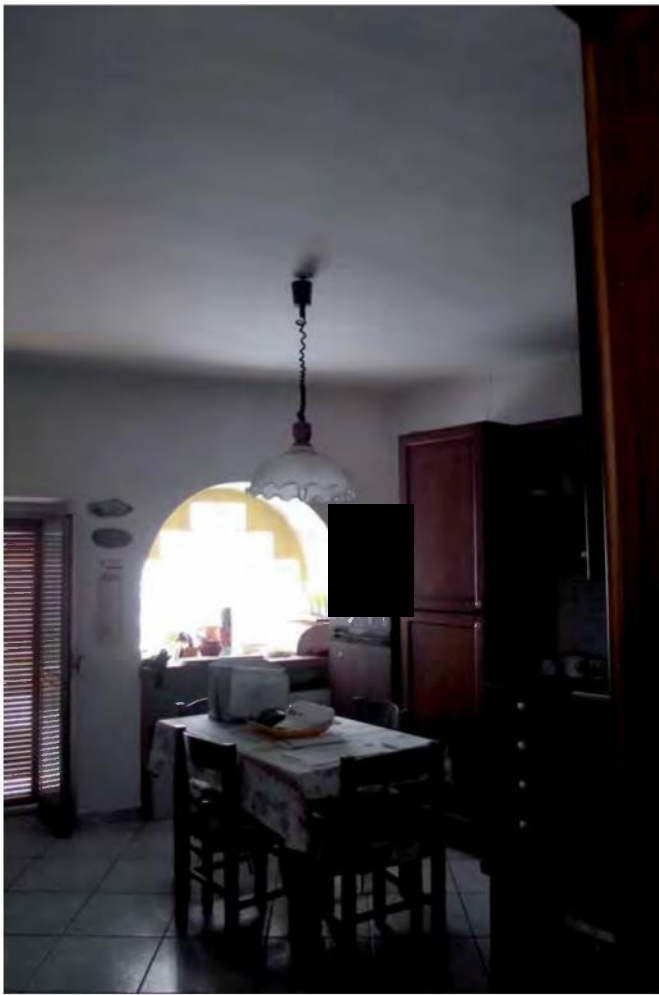
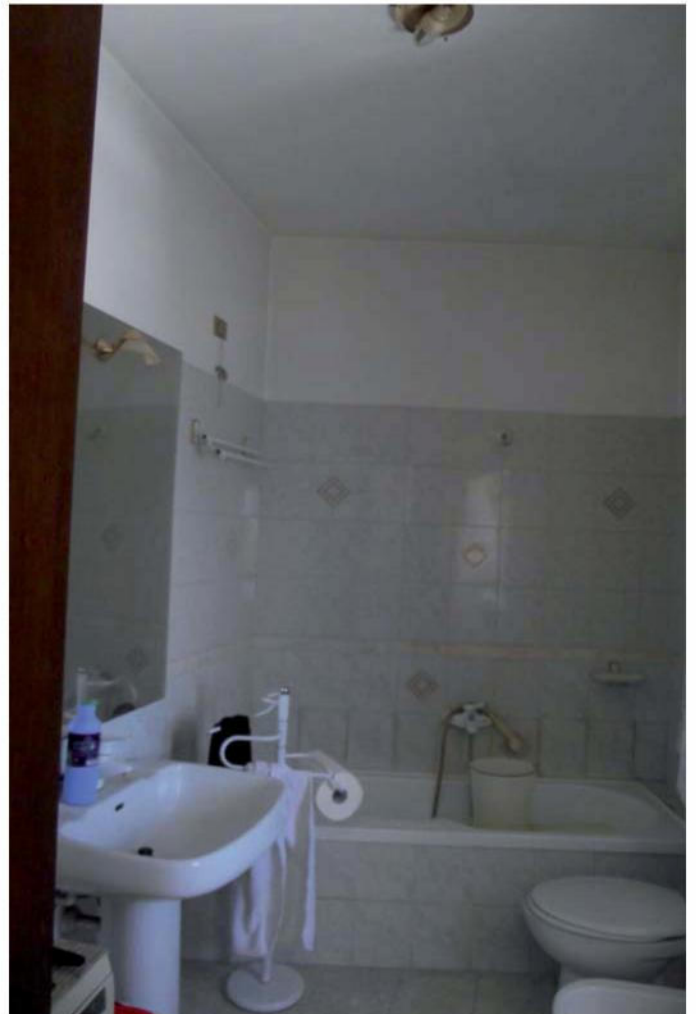
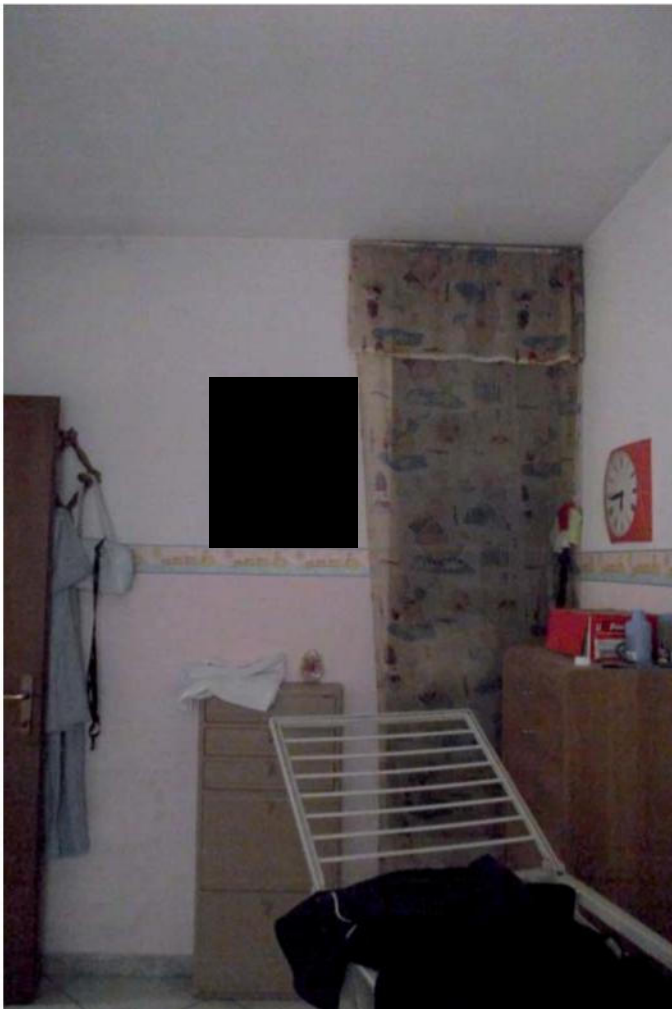


foto 8 9,10



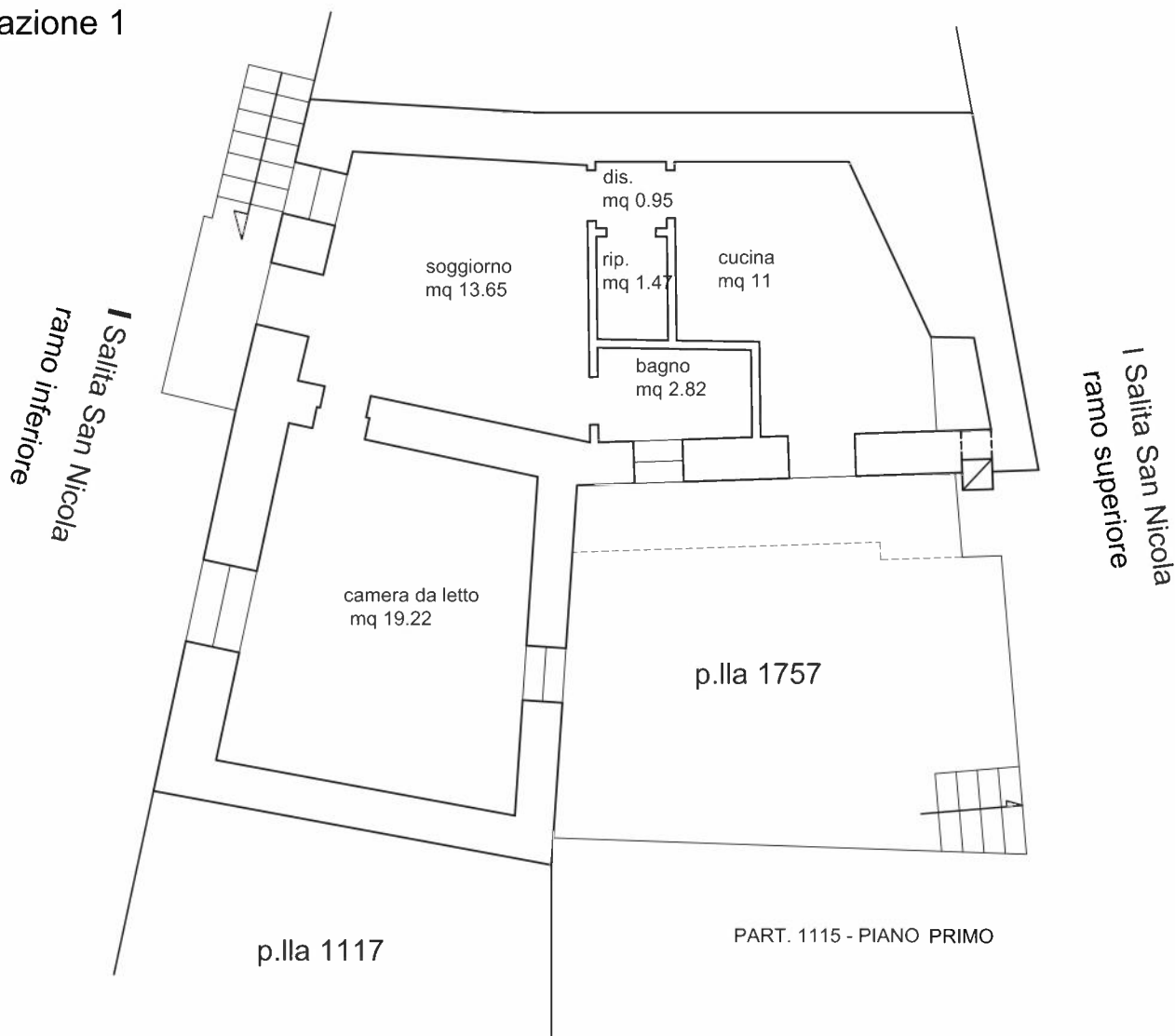


foto 11, 12, 13

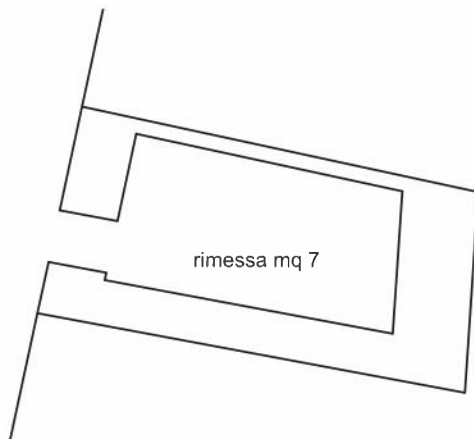


p.lla 1114

abitazione 1

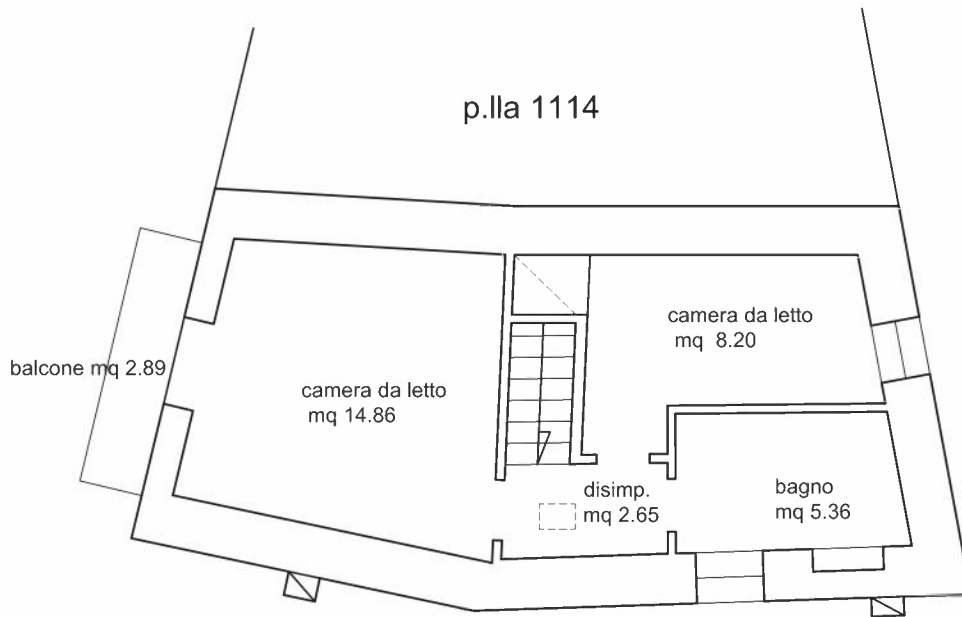


rimessa



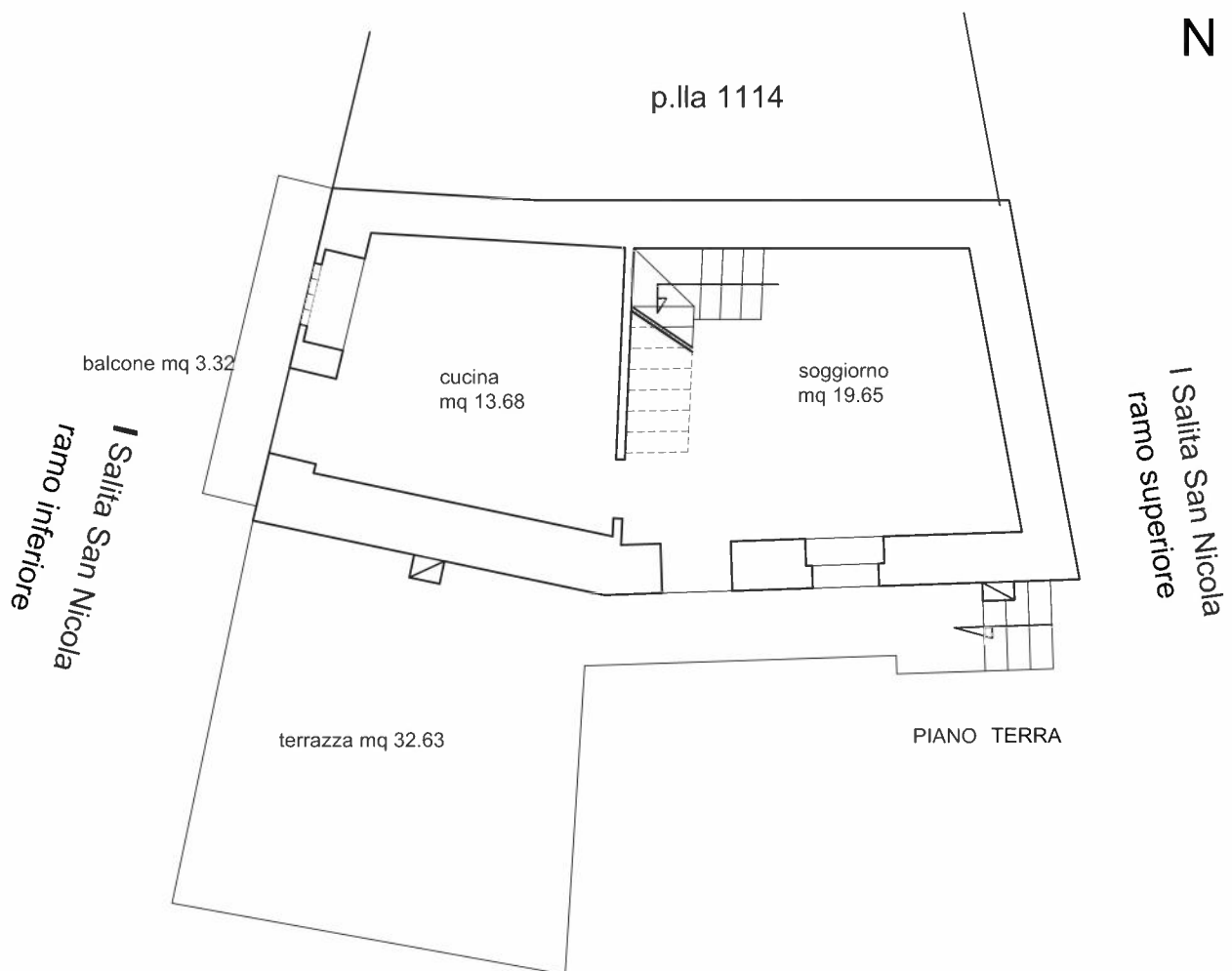
PART. 1116 SUB 1





PIANO PRIMO

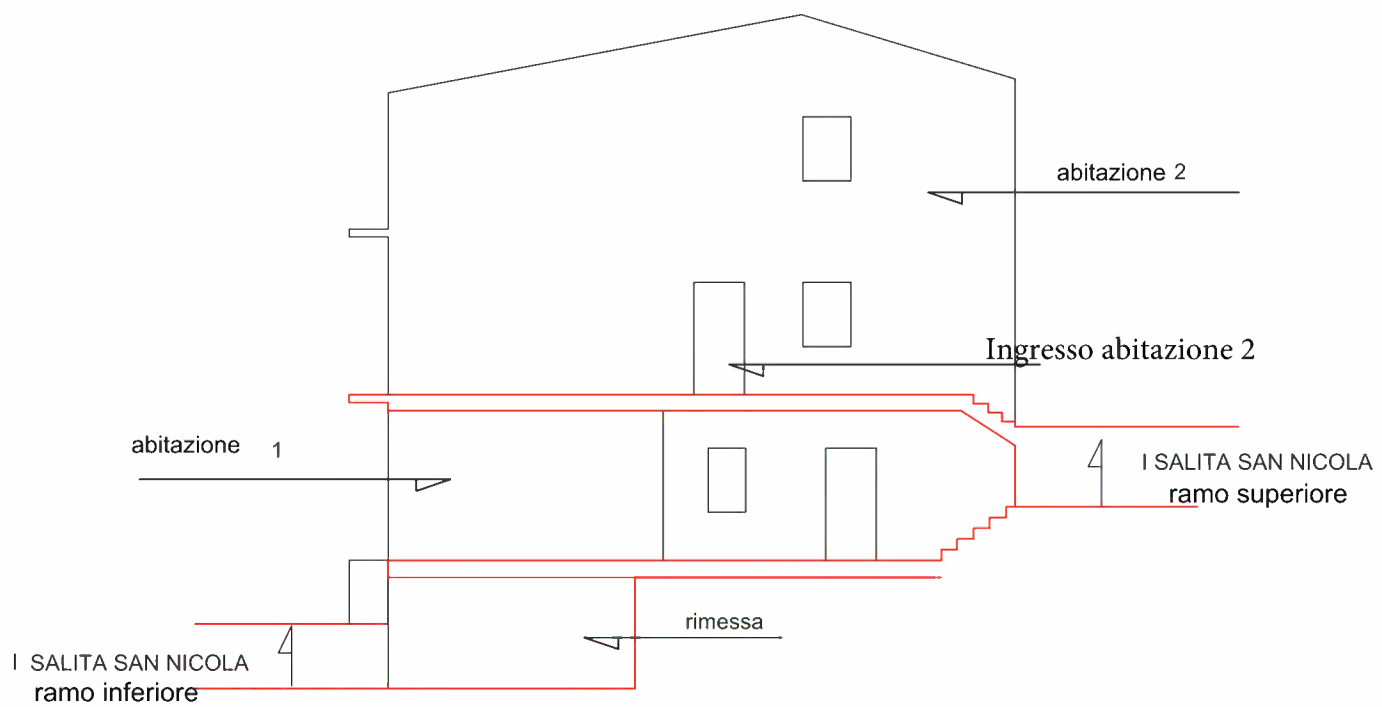
abitazione 2



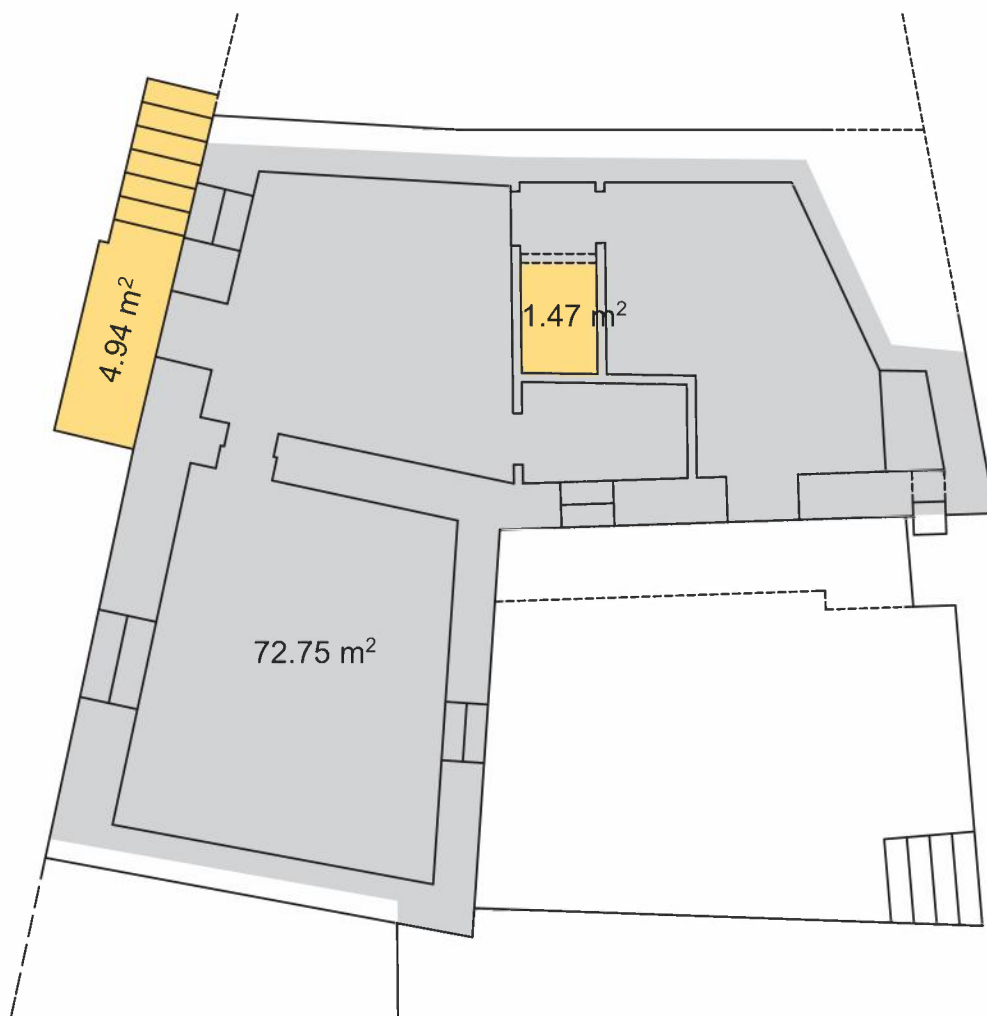
PIANO TERRA



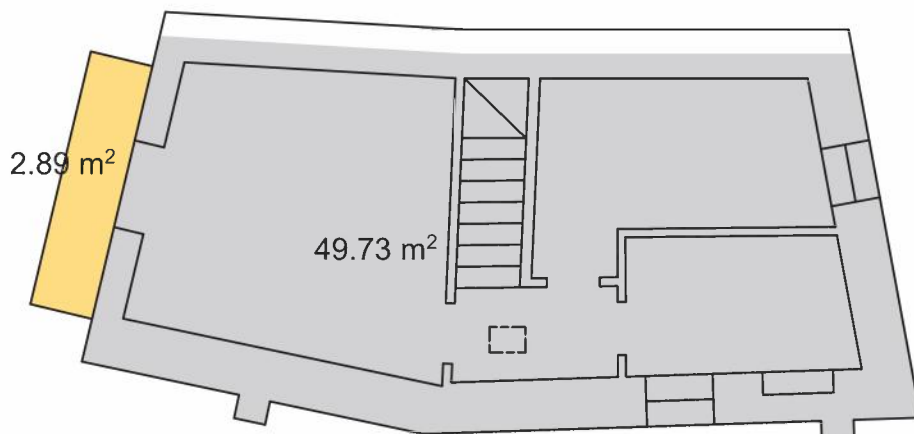
ANDAMENTO DEL TERRENO E SEZIONE IMMOBILI
scala 1:100



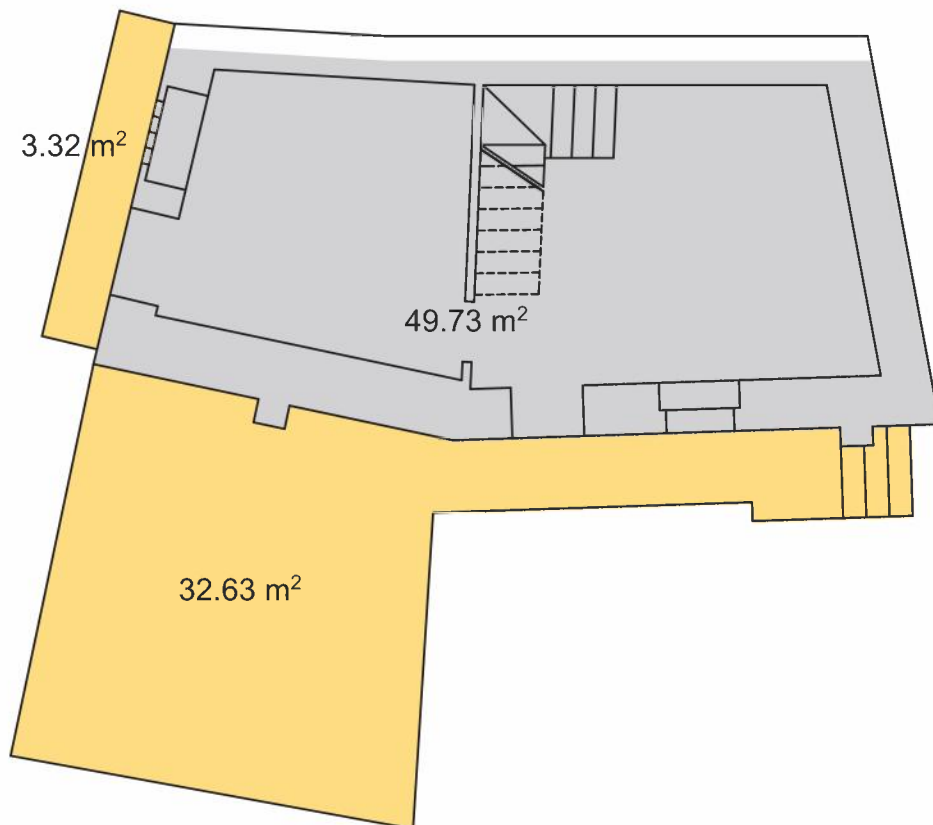
- Abitazione 1 - PART. 1115 PIANO PRIMO RISPETTO ALLA STRADA INFERIORE
SUPERFICIE COMMERCIALE 76,70



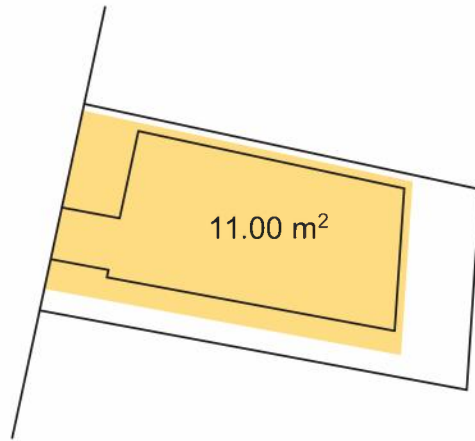
PART. 1115 PIANO PRIMO RISPETTO ALLA STRADA SUPERIORE



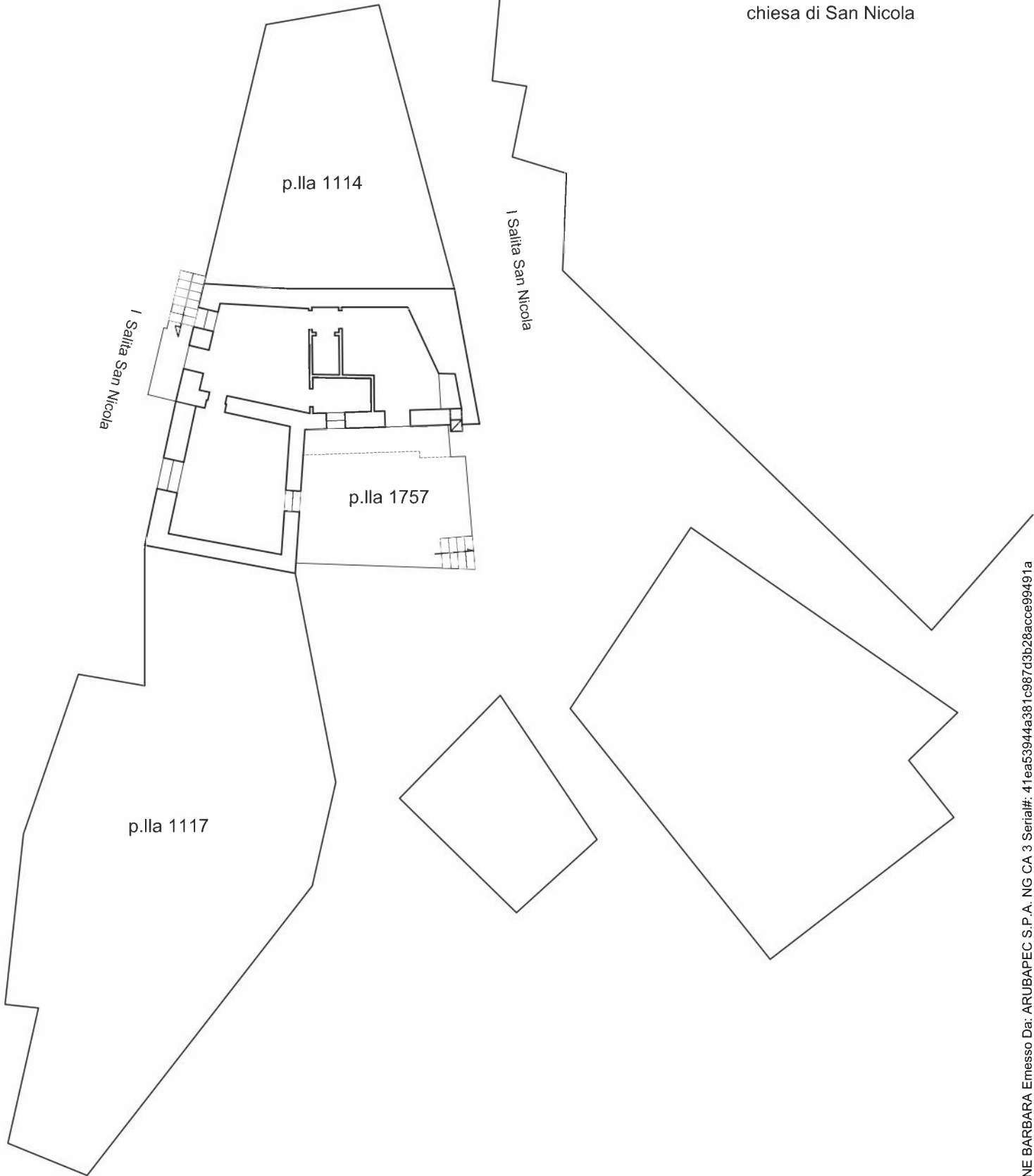
PIANO TERRA RISPETTO ALLA STRADA SUPERIORE



SUPERFICIE COMMERCIALE MQ 11



chiesa di San Nicola



N=62800

E=-9800

Direzione Provinciale di Chieti Ufficio Provinciale - Territorio - Direttore FRANCO SUSI

Vis. ord. (1.00 euro)



1 Particella 1116

Comune: PRETORO
Foglio: 6 All. A
Richiedente: CTU FALCONE BARBARA

Scala originale: 1:1000
Dimensione cornice: 267.000 x 189.000 metri

5-Giu-2019 11:18:29
Prot. n. CH0040608/2019

Firmato Da: FALCONE BARBARA Emesso Da: ARUBAPEC S.P.A. NG CA 3 Serial#: 41ea53944a381c987d3b28acce99491a

