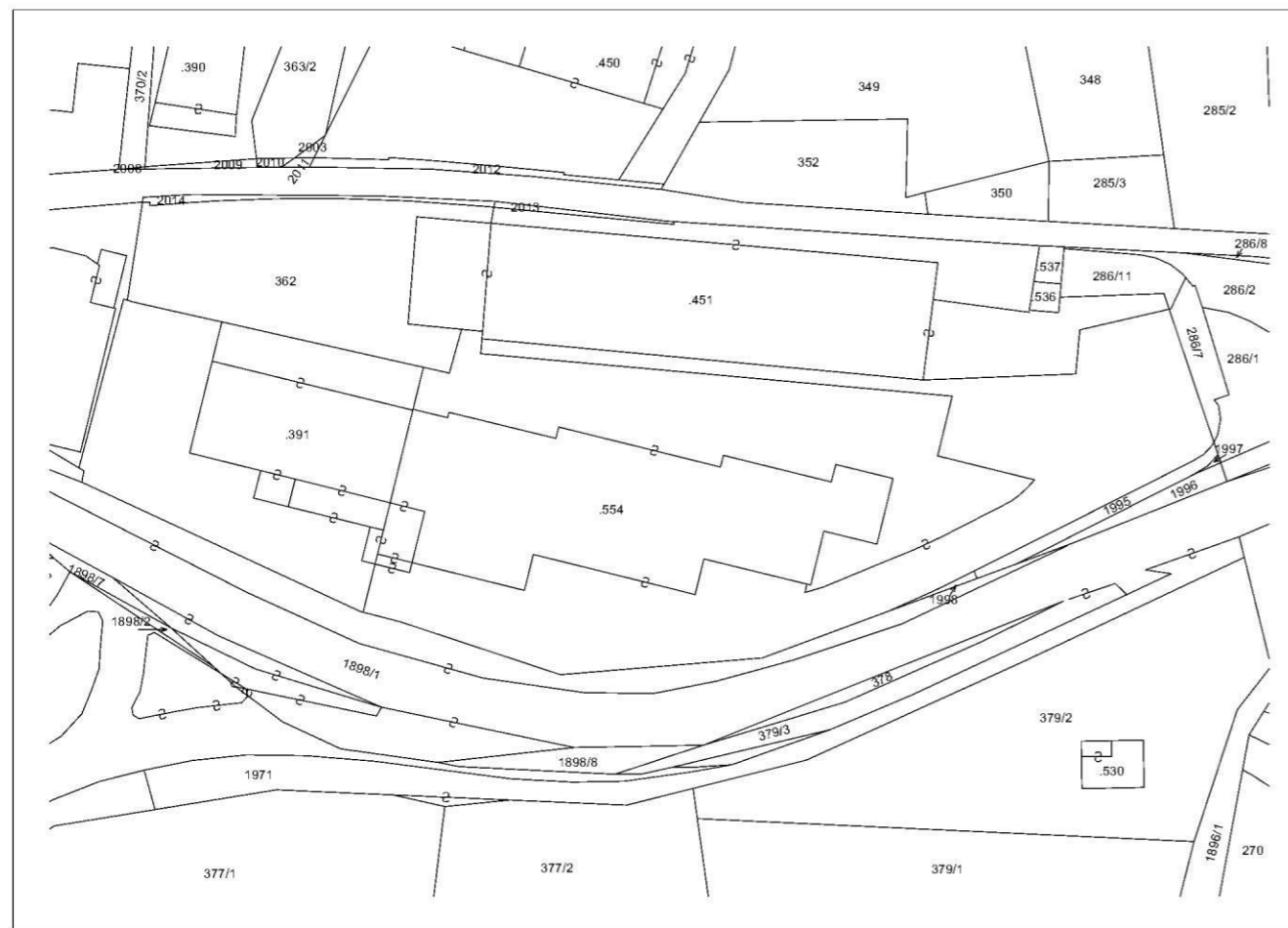


PIANO DI CASA MATERIALMENTE DIVISA

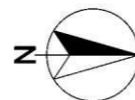
P.ED. 554 - P.T. 339 - SCALA 1:200

SI ATTESTA CONFORME ALLO STATO REALE IN DATA 13/12/2019 PER LE PP.MM. 1-2
E RELATIVE PARTI COMUNI

STATO FINALE



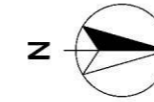
ESTRATTO MAPPA
scala 1:1000



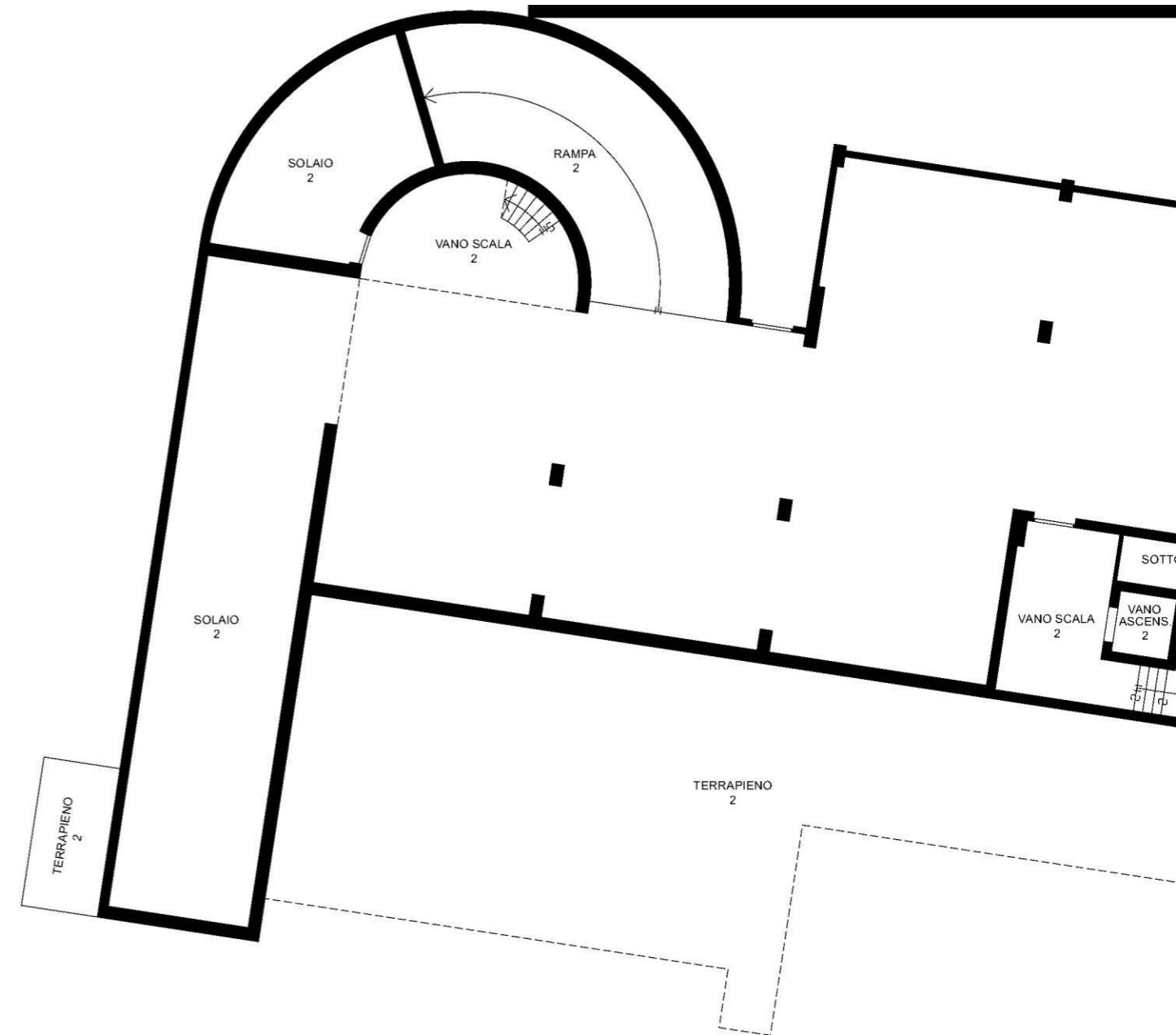
ESTRATTO DI MAPPA CONFORME ALLE RISULTANZE DELLA MAPPA DI CONSERVAZIONE ALLA DATA DEL 13/12/2019
E COME MODIFICATO DAL TIPO DI FRAZIONAMENTO NR. 904/2019 DI DATA 12/12/2019

Tione di Trento, 13/12/2019

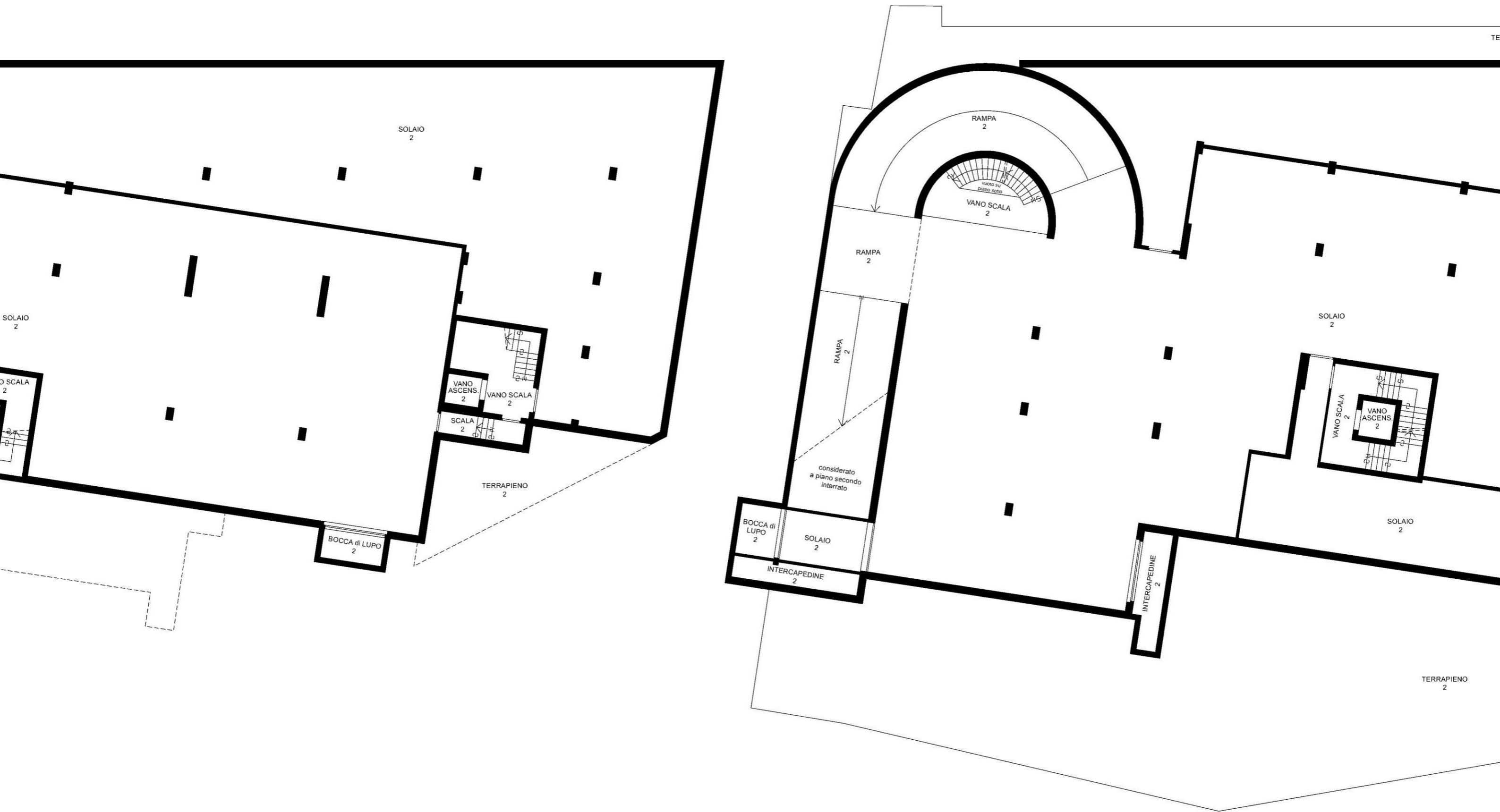
il tecnico



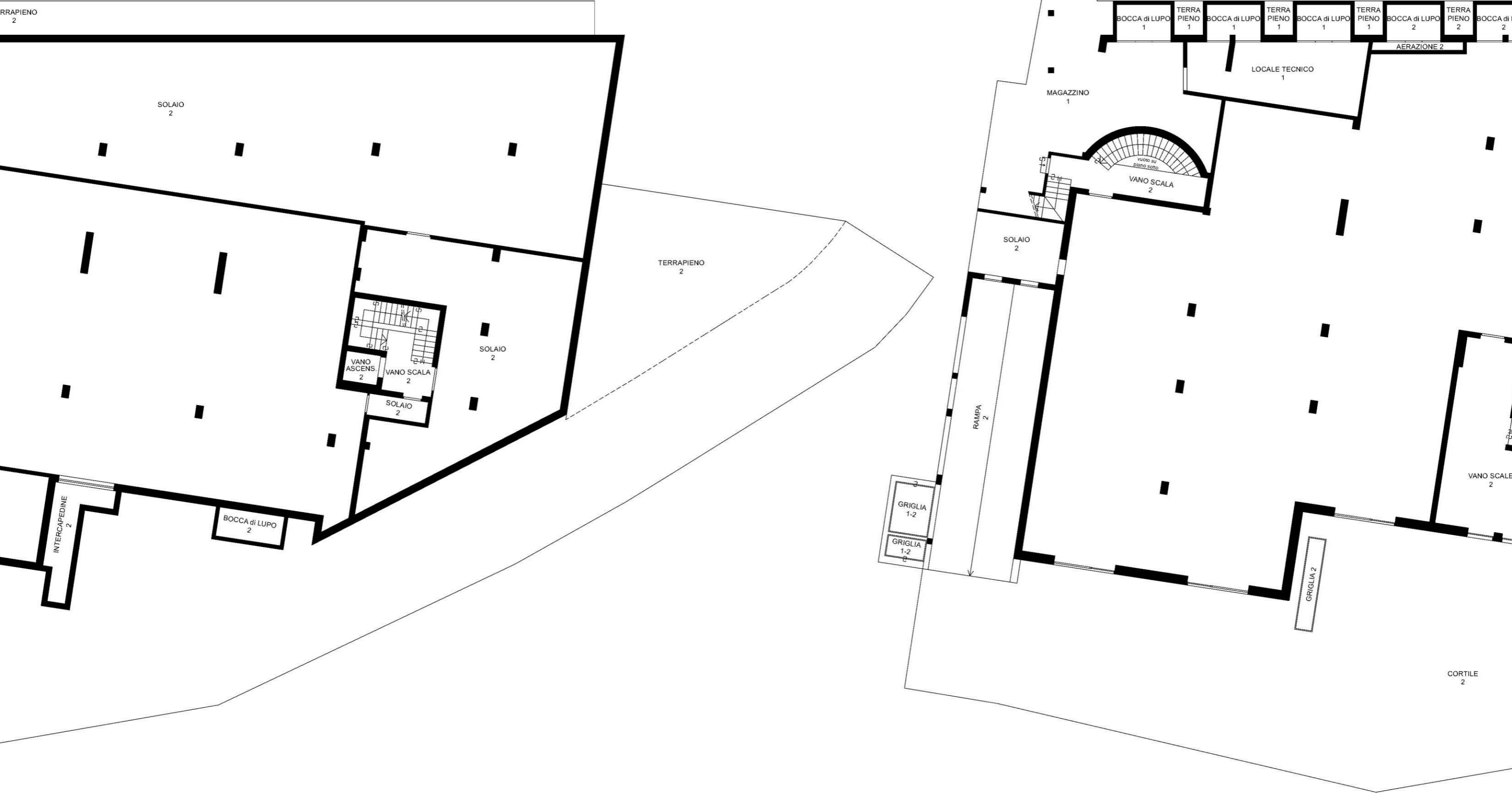
PIANO SECONDO INTERRATO



PIANO PRIMO INTERRATO



PIANO TERRA



TERRAPIENO 2
BOCCA di LUPO 2
TERRAPIENO 2
BOCCA di LUPO 2
TERRAPIENO 2
BOCCA di LUPO 2
TERRAPIENO 2
BOCCA di LUPO 2
TERRAPIENO 2
BOCCA di LUPO 2
TERRAPIENO 2
BOCCA di LUPO 2
TERRAPIENO 2
BOCCA di LUPO 2
TERRAPIENO 2
BOCCA di LUPO 2
TERRAPIENO 2
BOCCA di LUPO 2
AERAZIONE 2
AERAZIONE 2

TERRAPIENO 2

SOLAIO 2

SOLAIO 2

VANO ASCENS. 2

VANO SCALE 2

VANO ASCENS. 2

INTERCAPEDINE 2

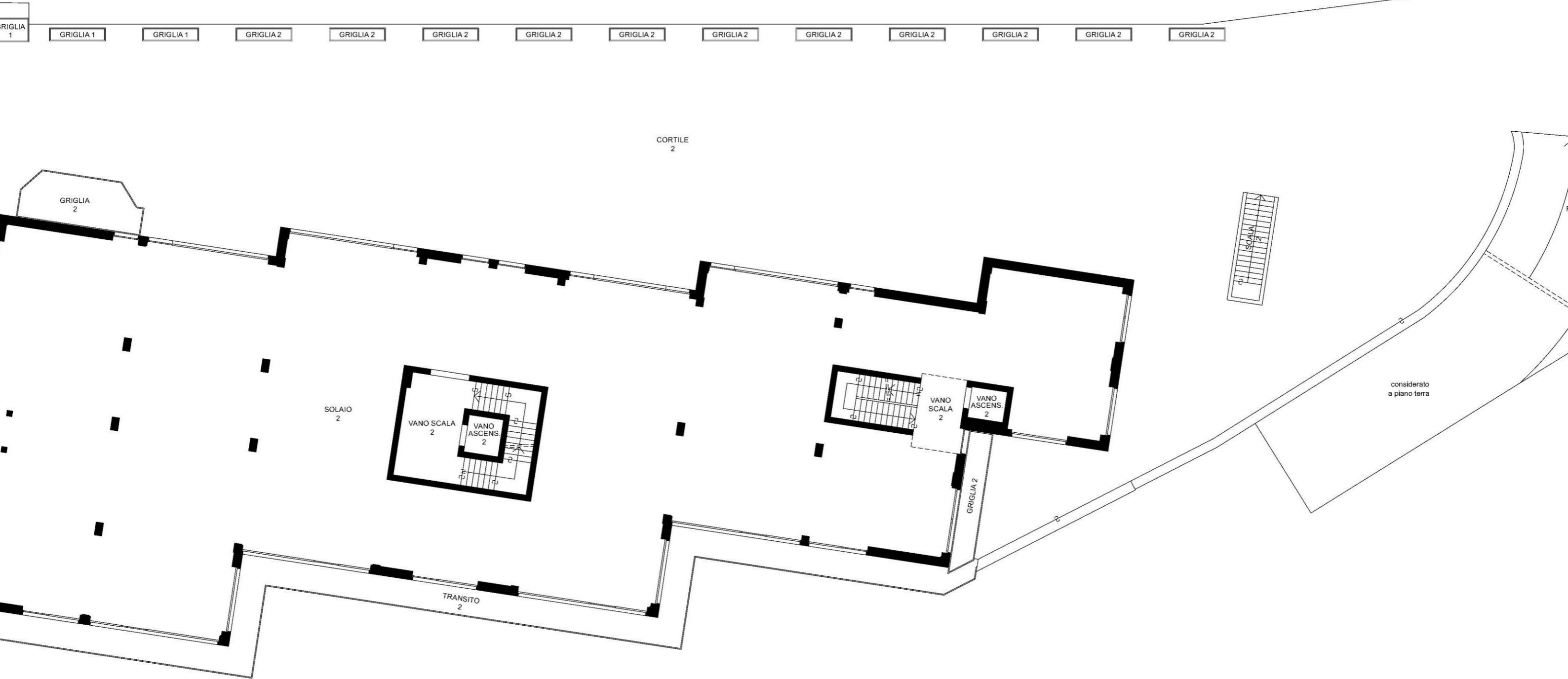
RAMPA 2

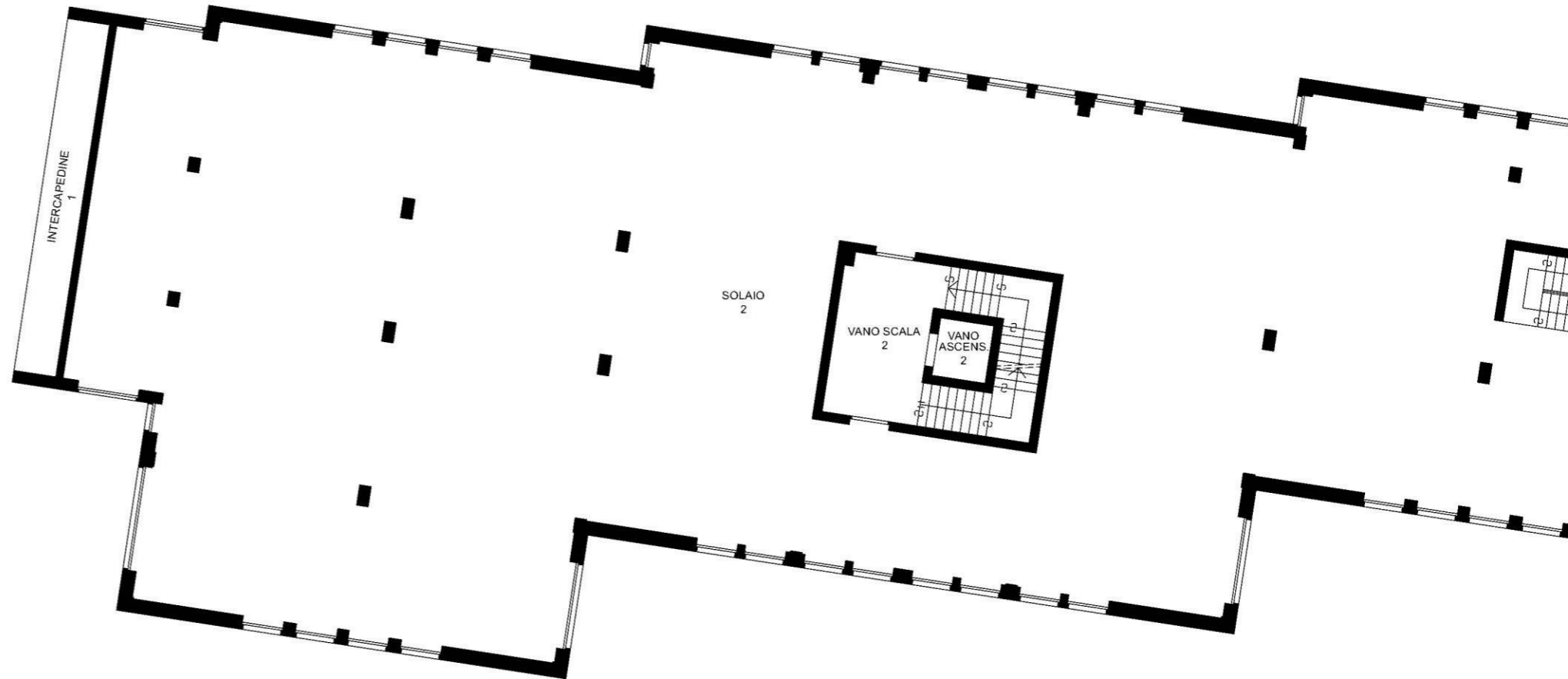
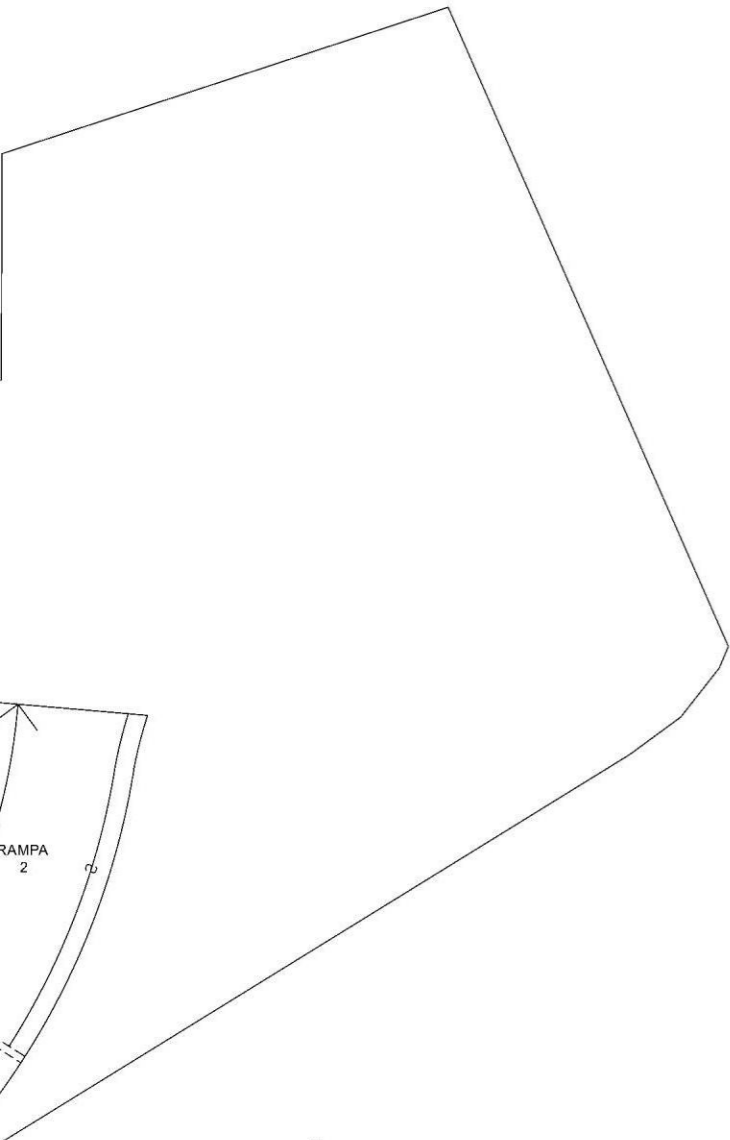
GRIGLIA 2

GRIGLIA 2

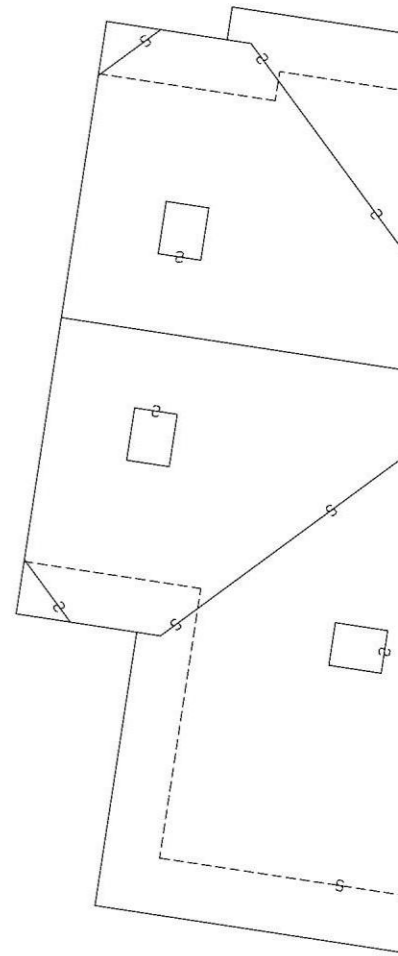
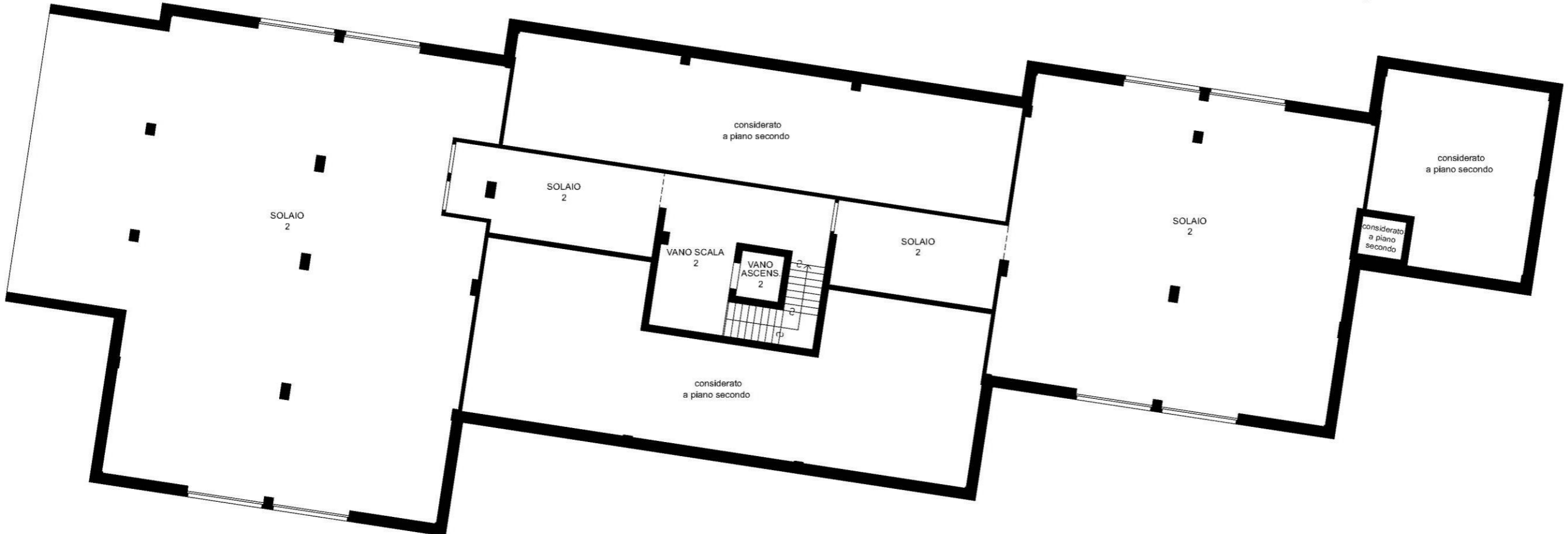
GRIGLIA 2

PIANO PRIMO

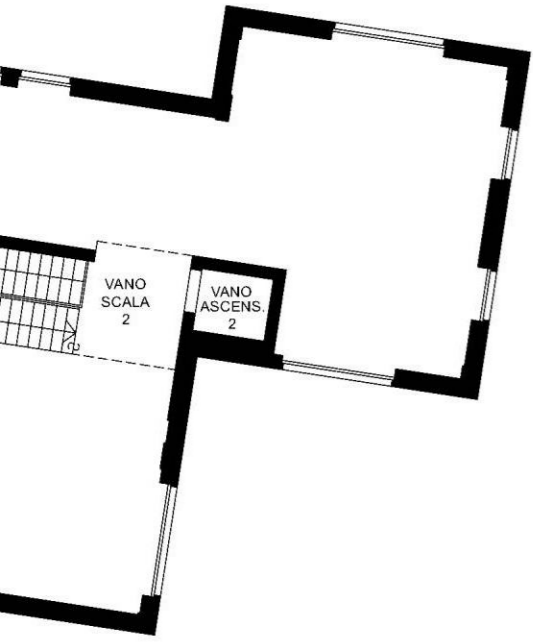




PIANO TERZO



IANO SECONDO



TETTO

