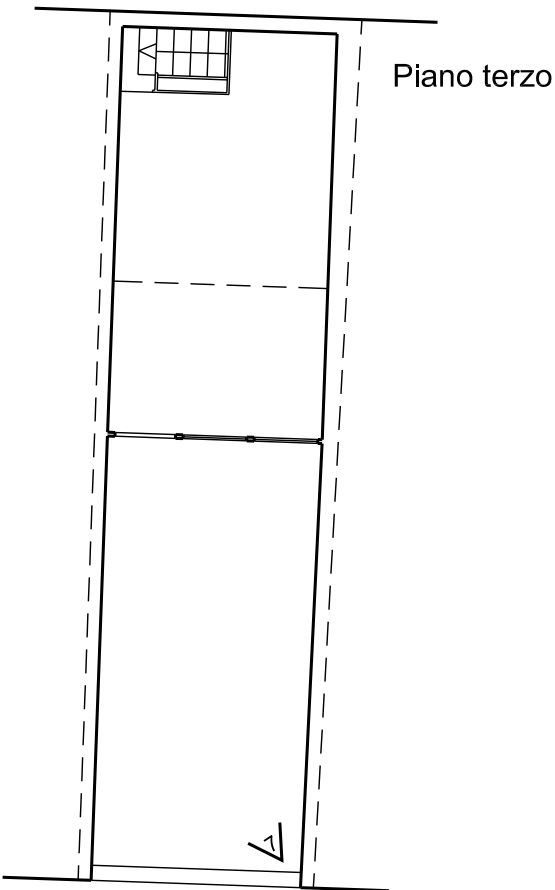
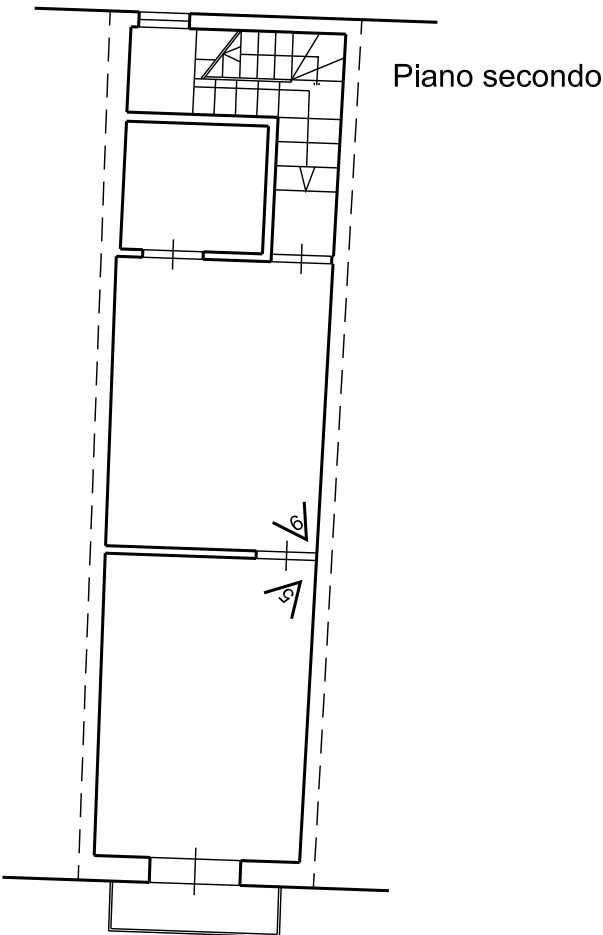
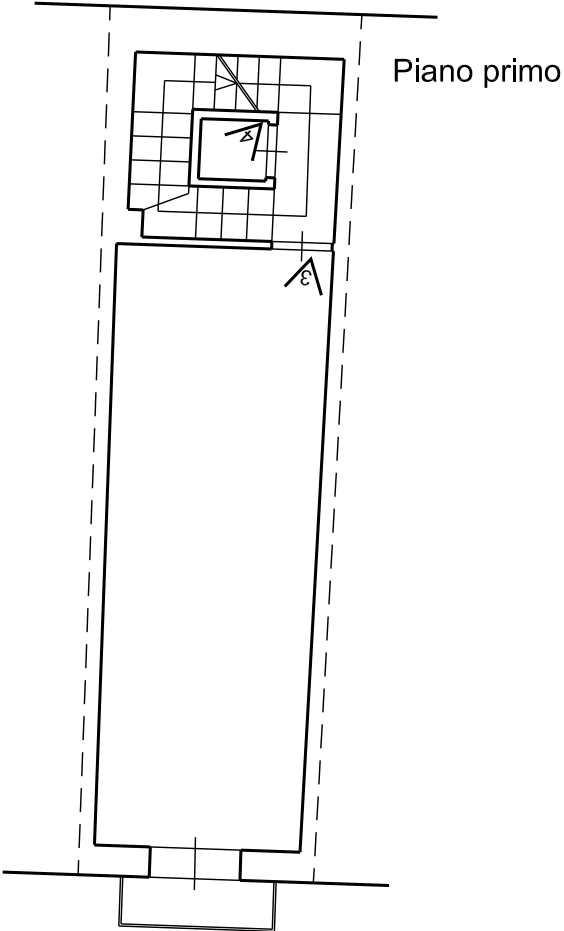
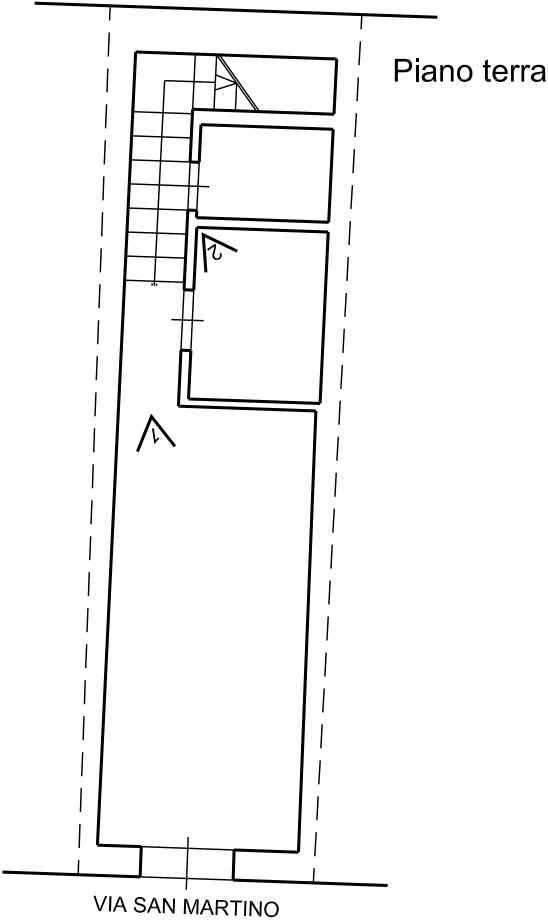


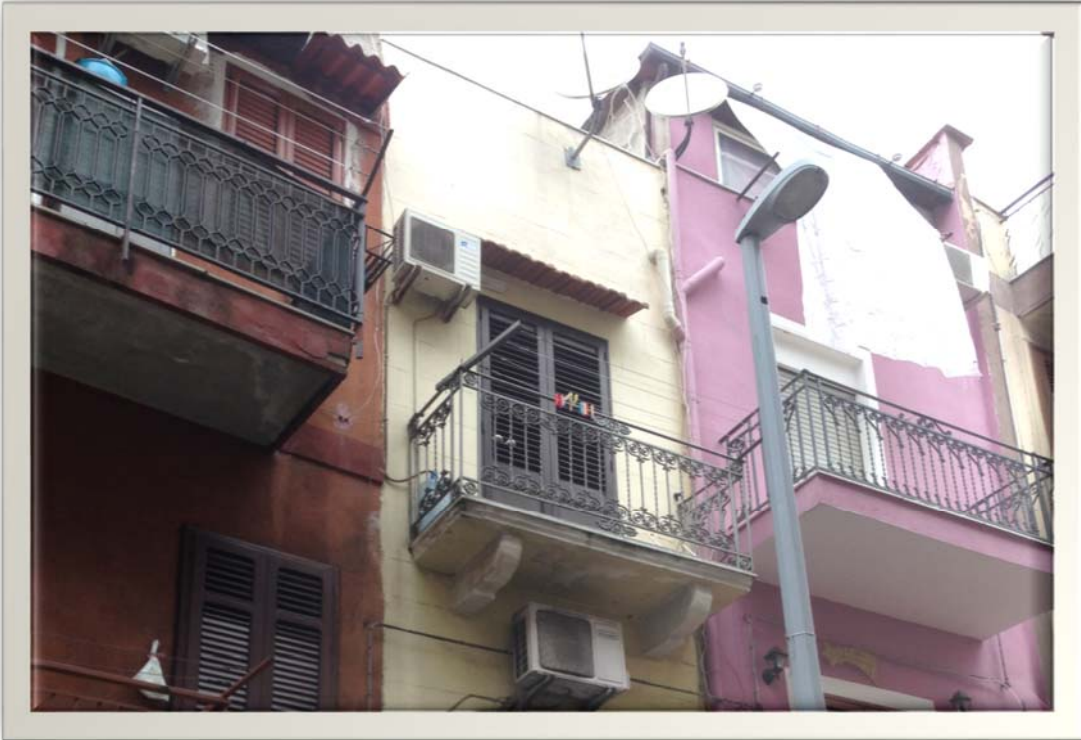
Reportage fotografico - indicazione dei coni ottici



Reportage fotografico



Prospetto su via San Martino



Particolare del secondo e terzo piano

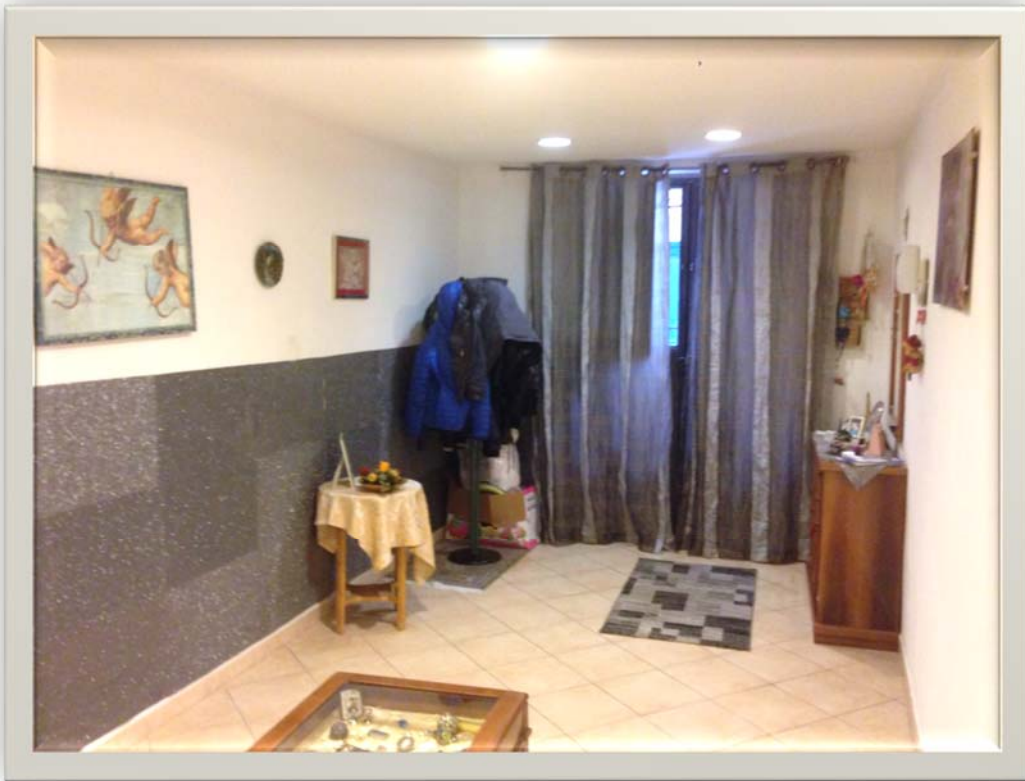


Foto n.° 1

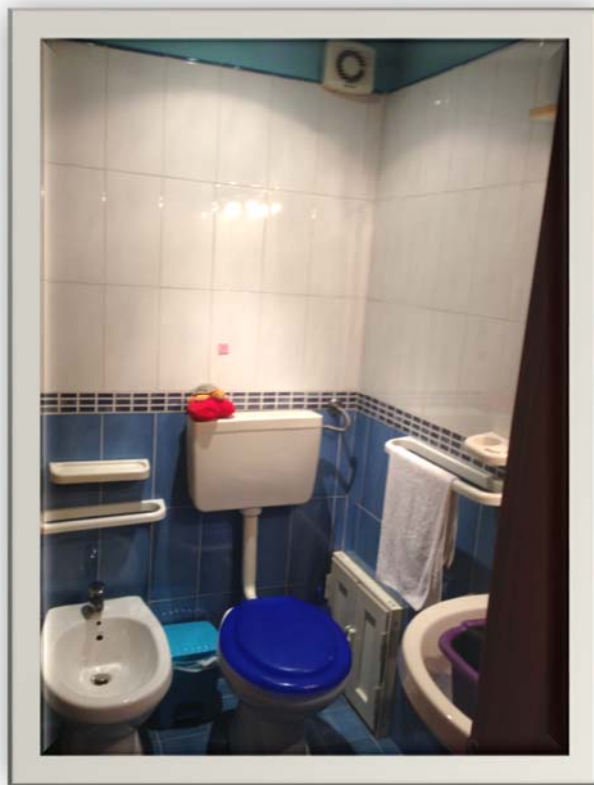


Foto n.° 2



Foto n.° 3



Foto n.° 4



Foto n.° 5

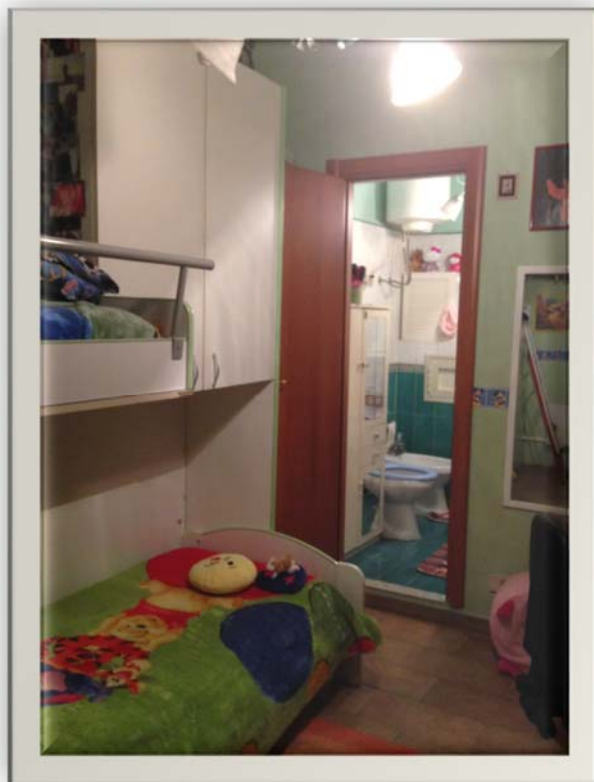


Foto n.° 6

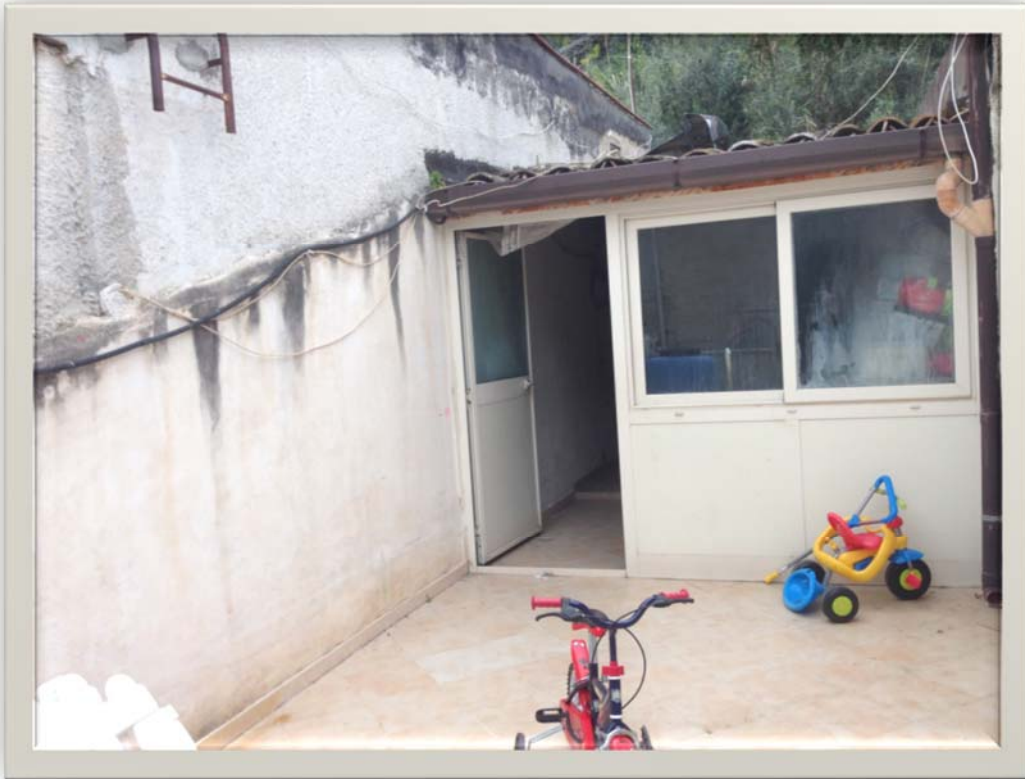


Foto n.° 7



Particolare della scala in ferro di accesso al terzo piano abusivo