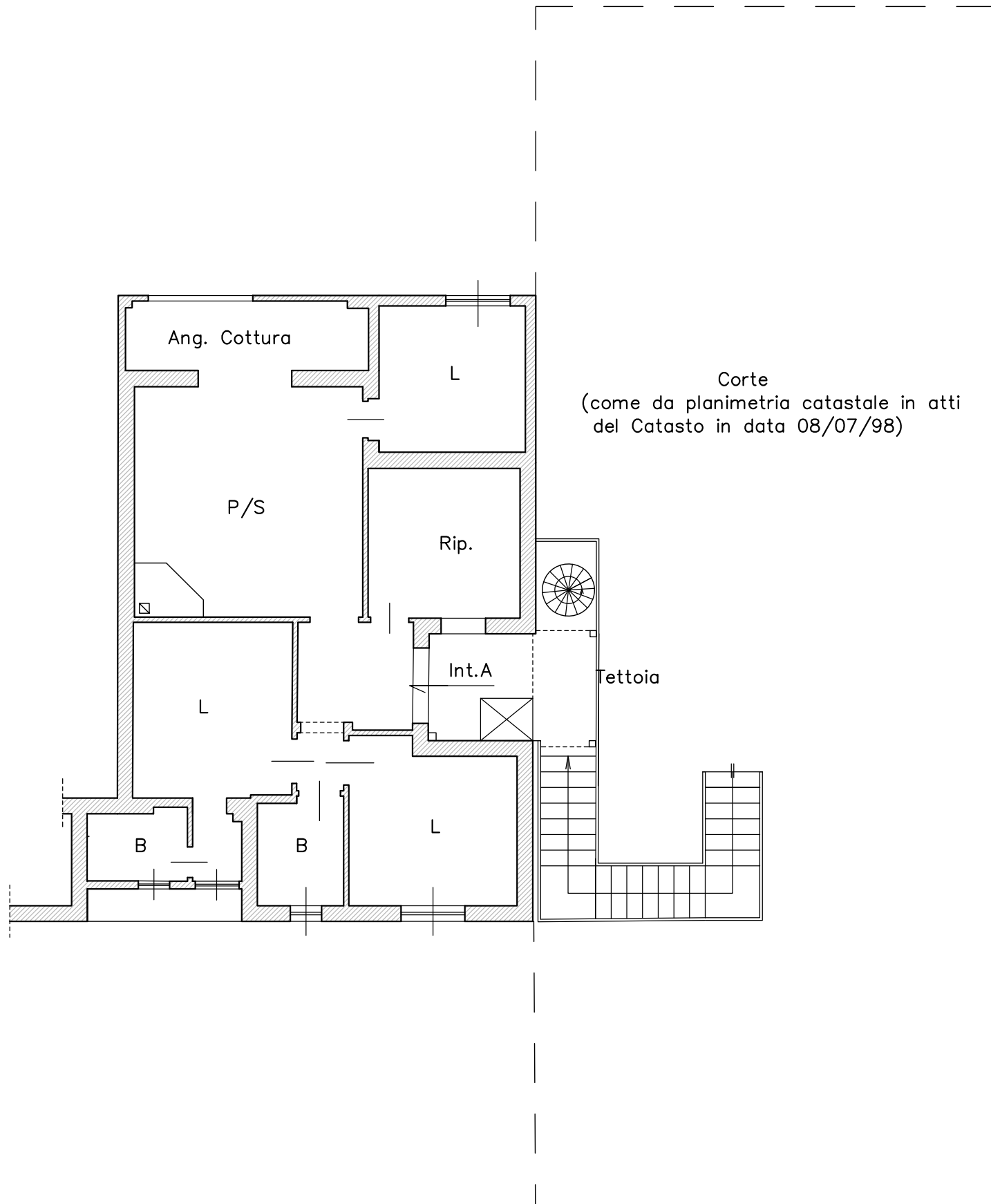
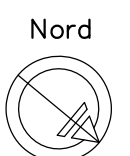


TRIBUNALE DI VELLETRI
Esec. Imm. 292/2022
Comune di Ardea (RM)- Via Teseo n.23
N.C.E.U. al Foglio 55 - Part. 807 - **Sub. 501**
Rilievo Appartamento, P1°- interno n. A

Via Teseo



Pianta piano primo



Scala 1:100