

DOCUMENTAZIONE FOTOGRAFICA

Allegato alla CTU Geom. Giuseppe Paolini

Esecuzione immobiliare 415/2016- Tribunale di Velletri

Appartamento piano primo via Foligno n. 8 Ariccia (RM)

Foto n. 1



Foto n. 2



Foto n. 3

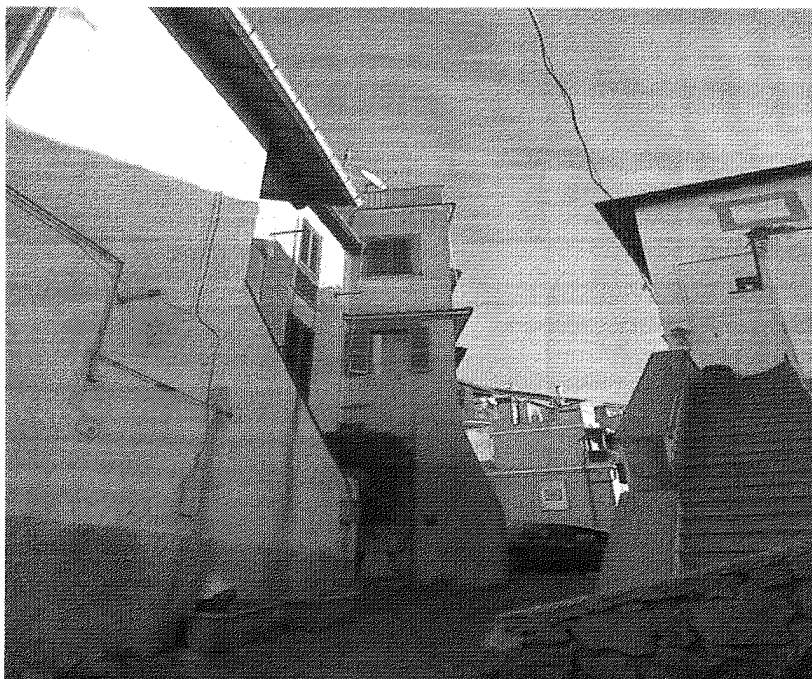


Foto n. 4

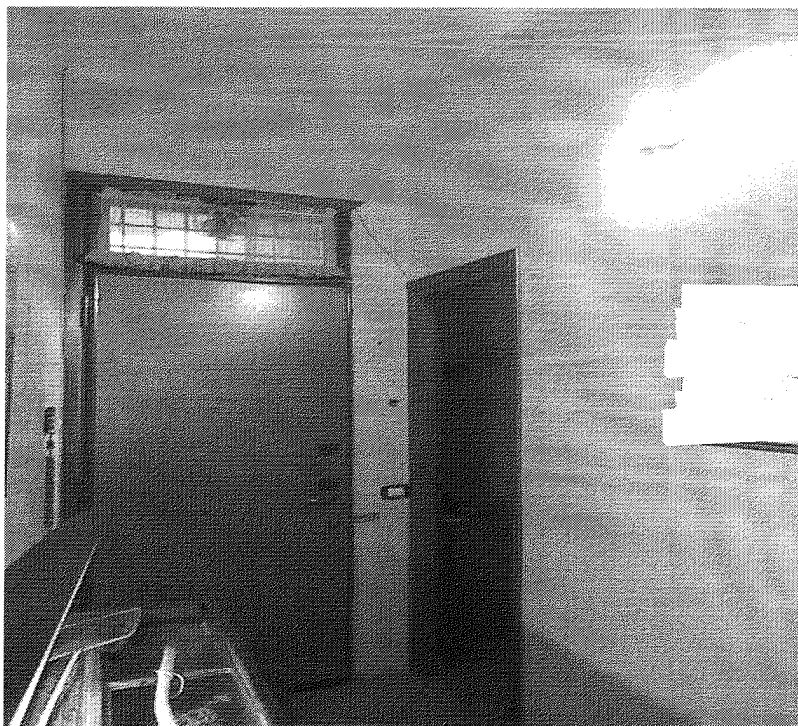


Foto n. 5

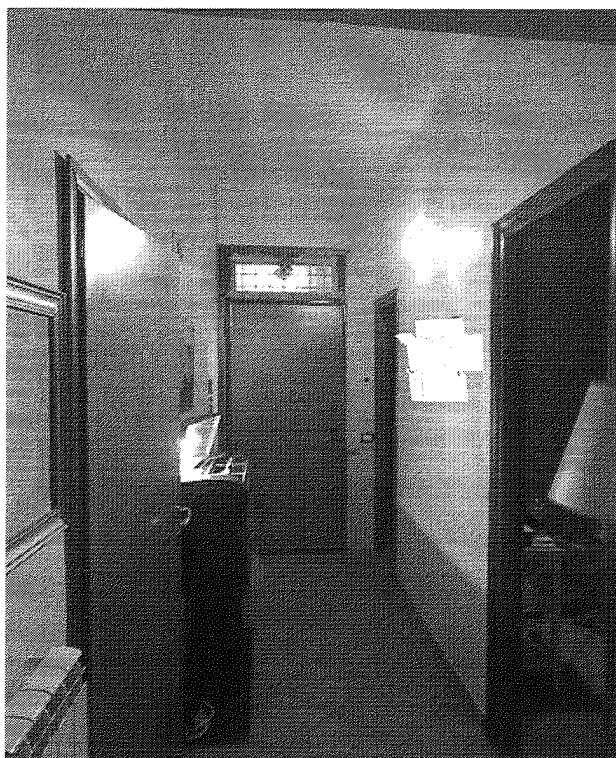


Foto n. 6

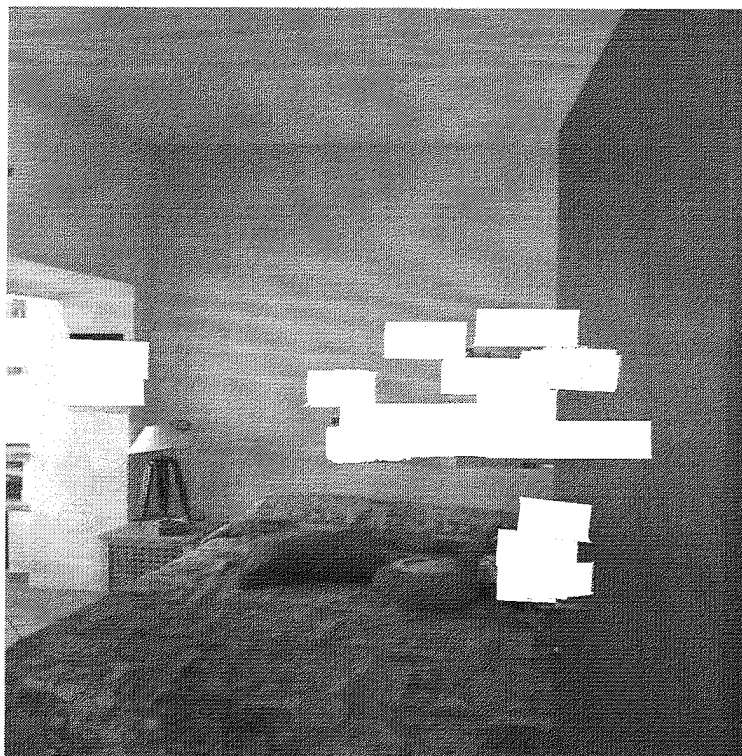


Foto n. 7

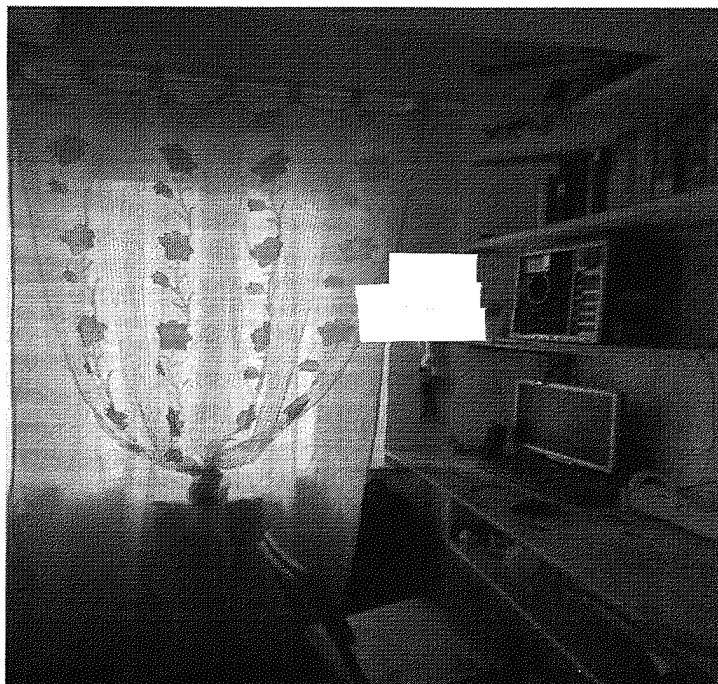


Foto n. 8

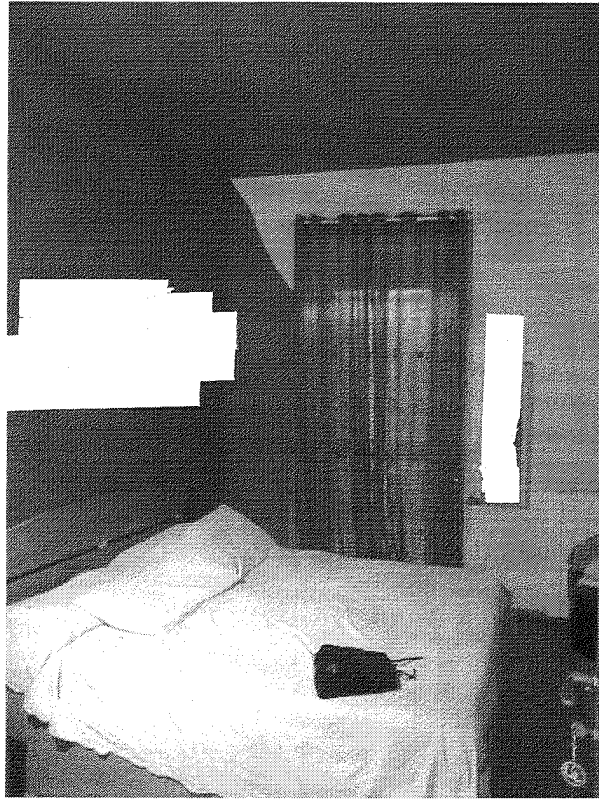


Foto n. 9

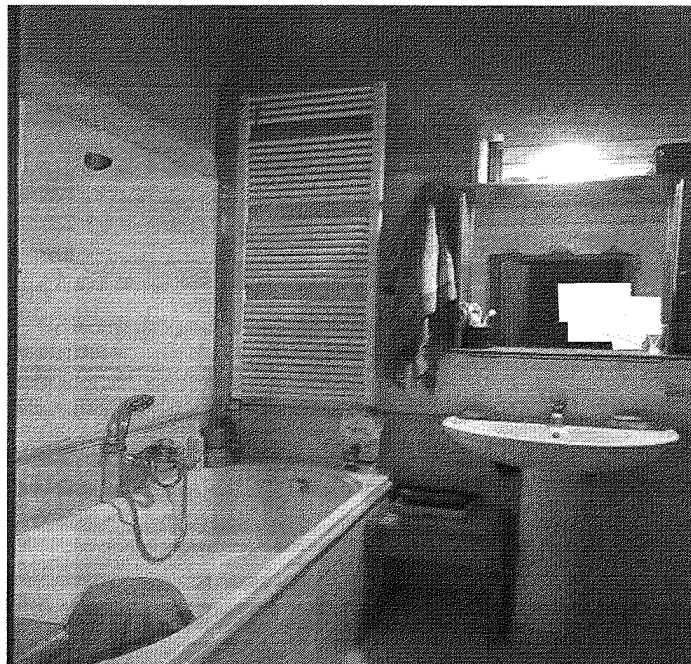
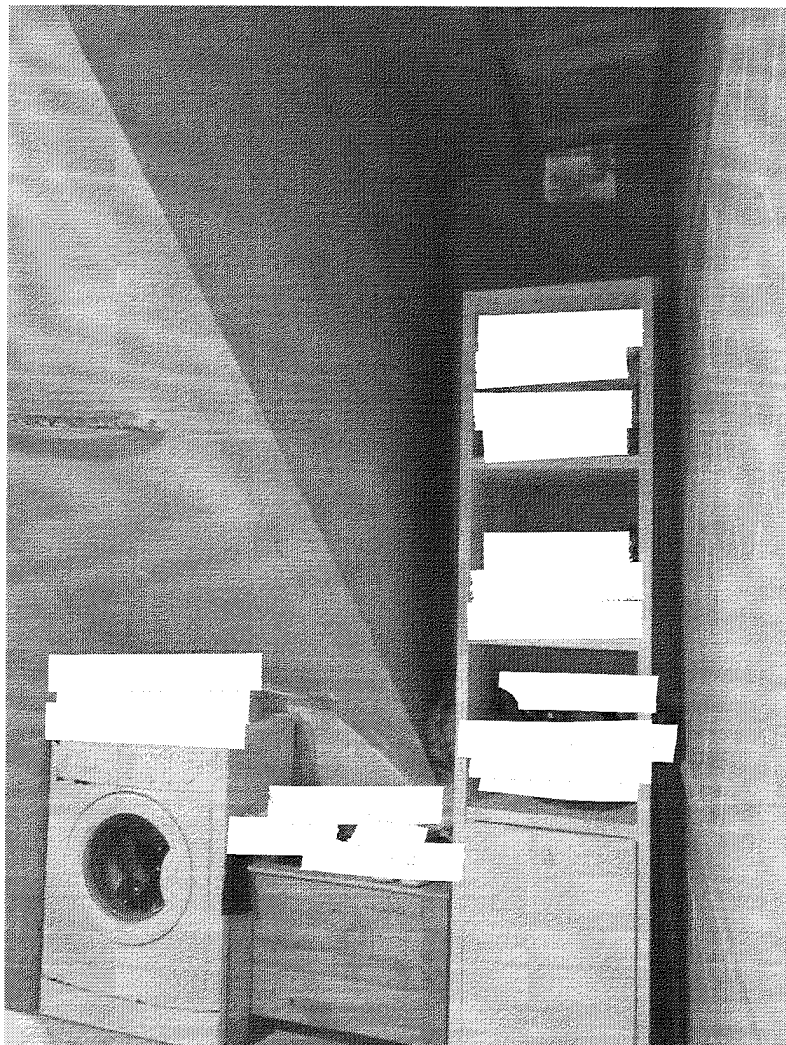


Foto n. 10



Il Tecnico

Geom. Giuseppe Paolini

