

TRIBUNALE di VERCELLI
Esec. immobiliare n. 42-2022
FOTOGRAFIE

ESTERNO complesso principale
(Corso Nuova Italia angolo via IV Novembre)





Area cortilizia interna ed area adibita a giardino





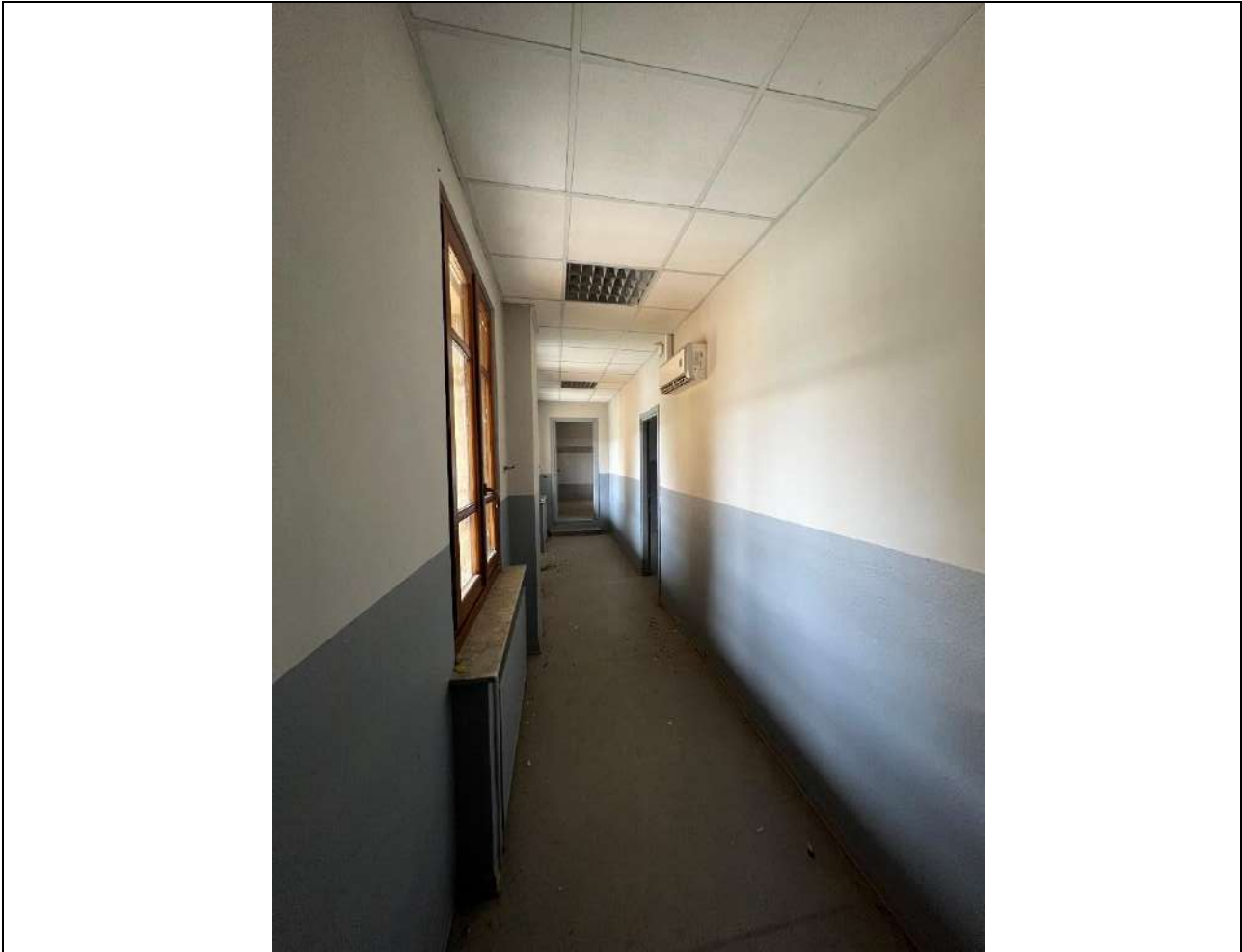




Fabbricati interni al complesso

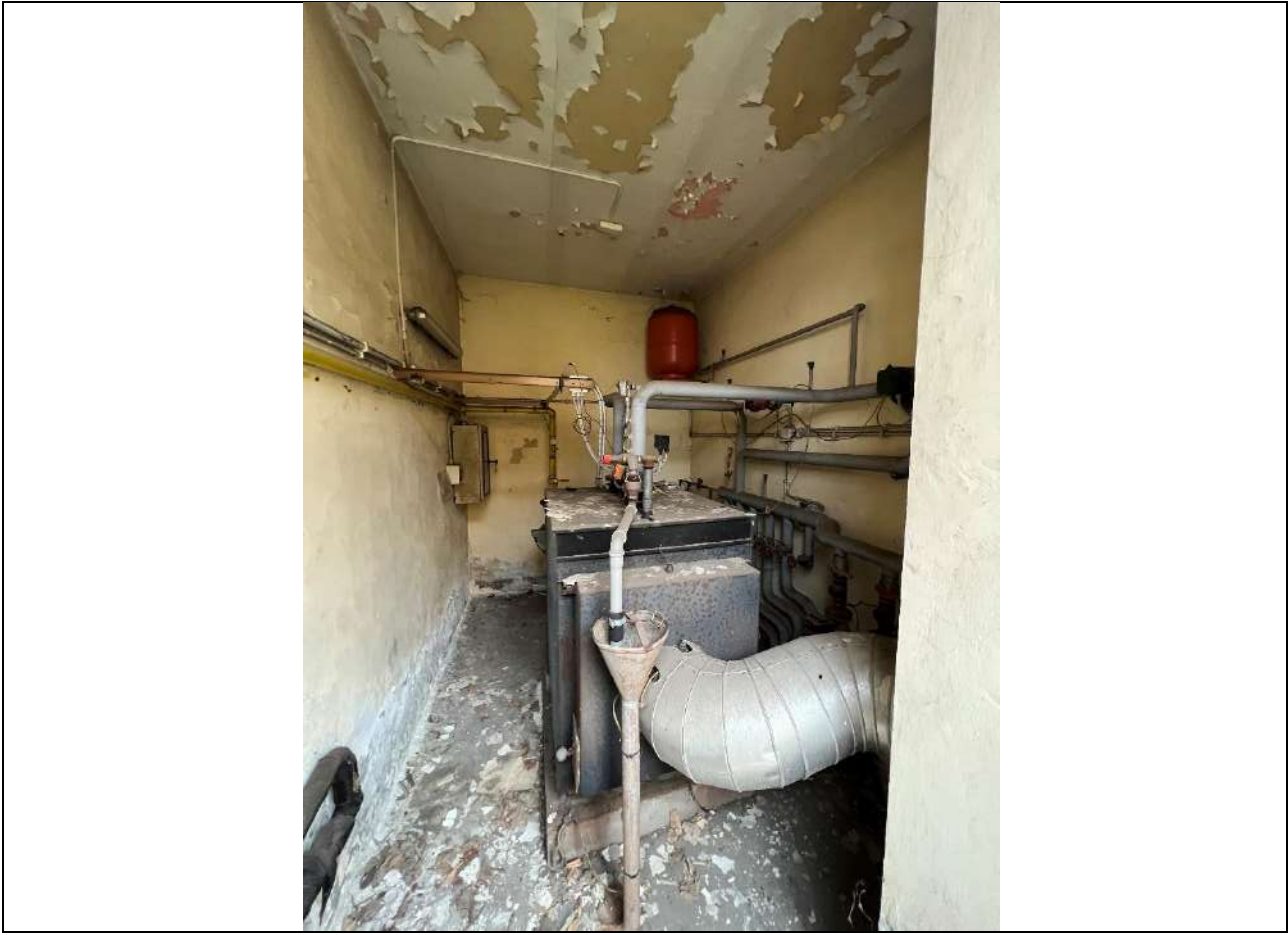




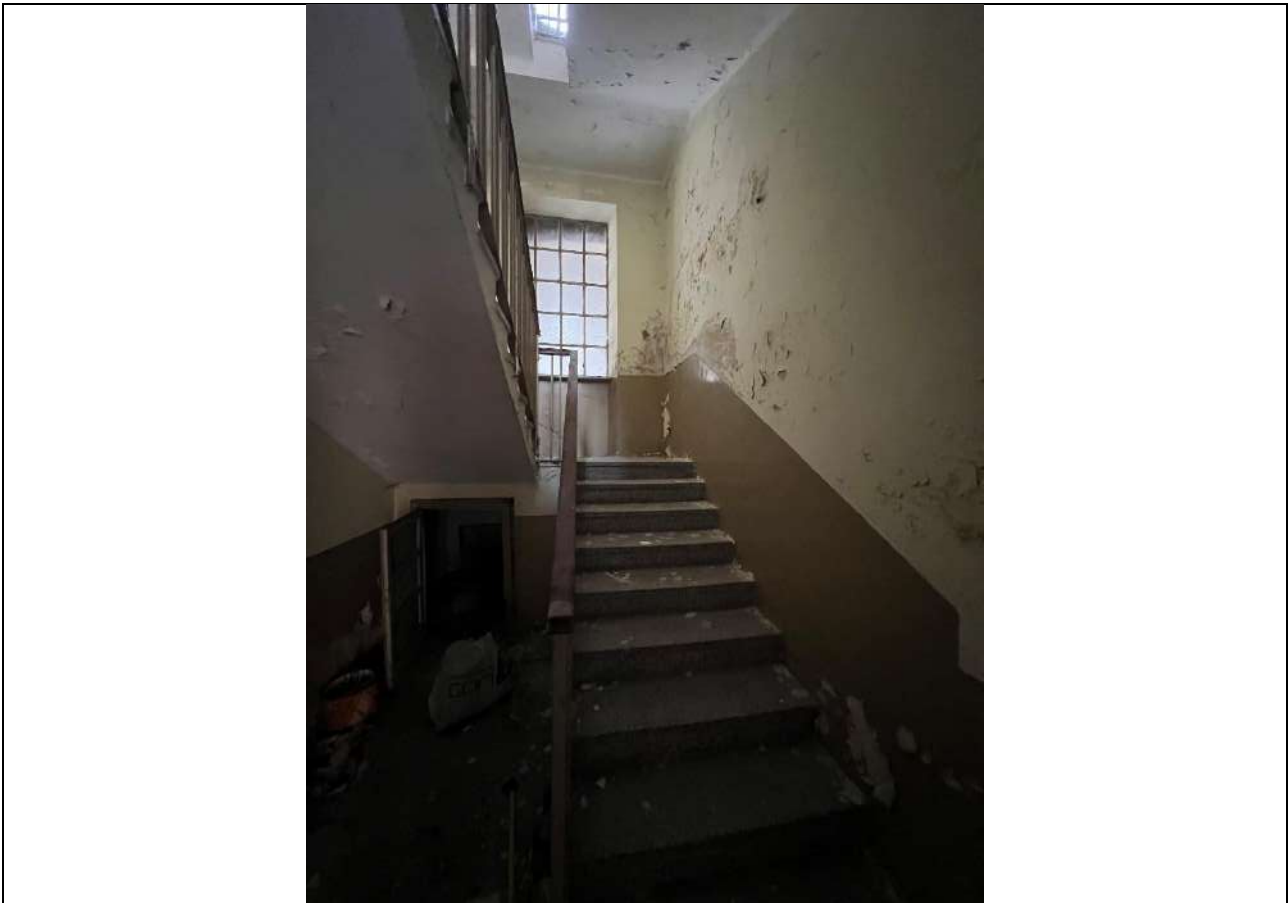




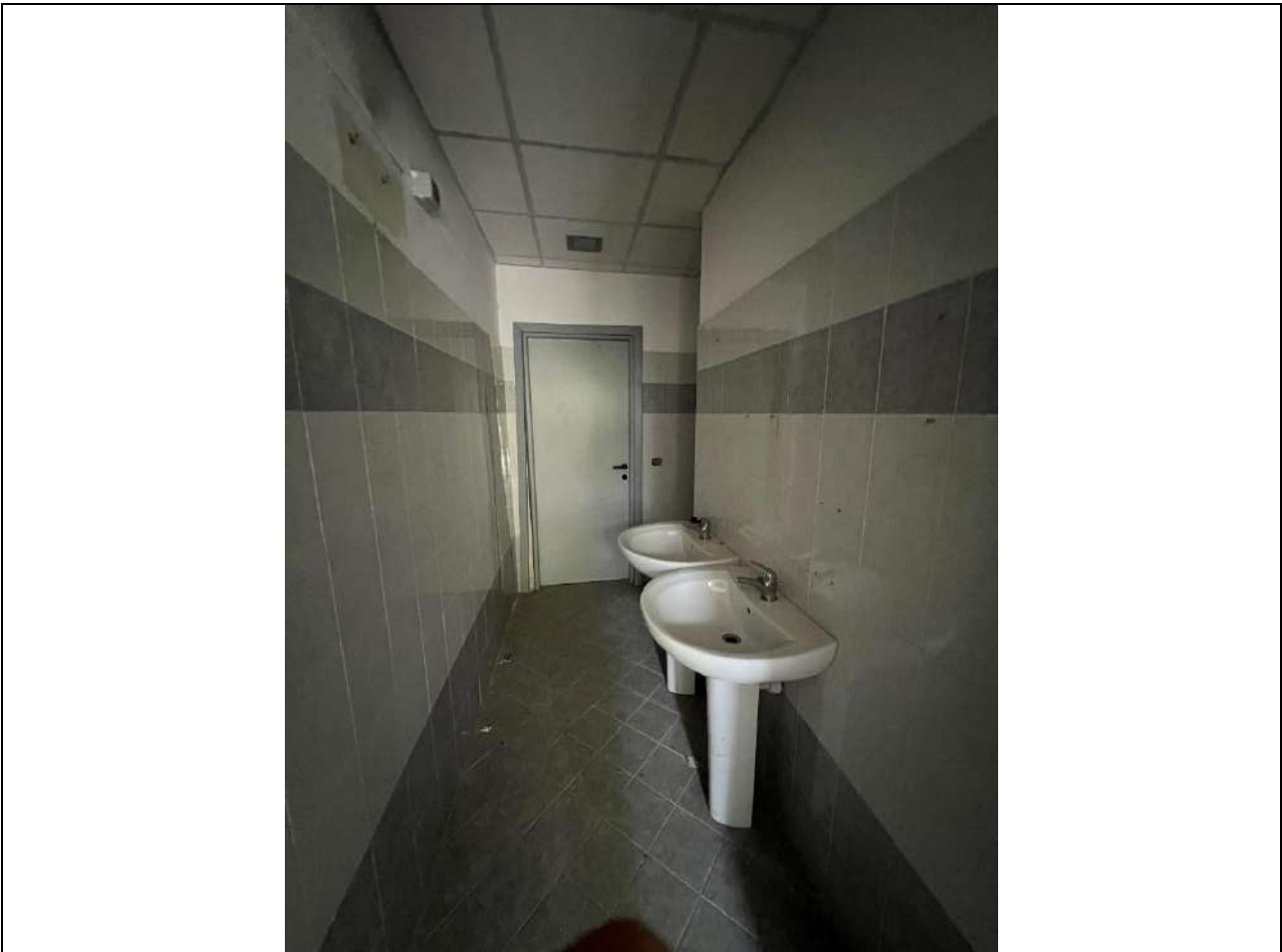














CAPANNONE – Via IV Novembre



