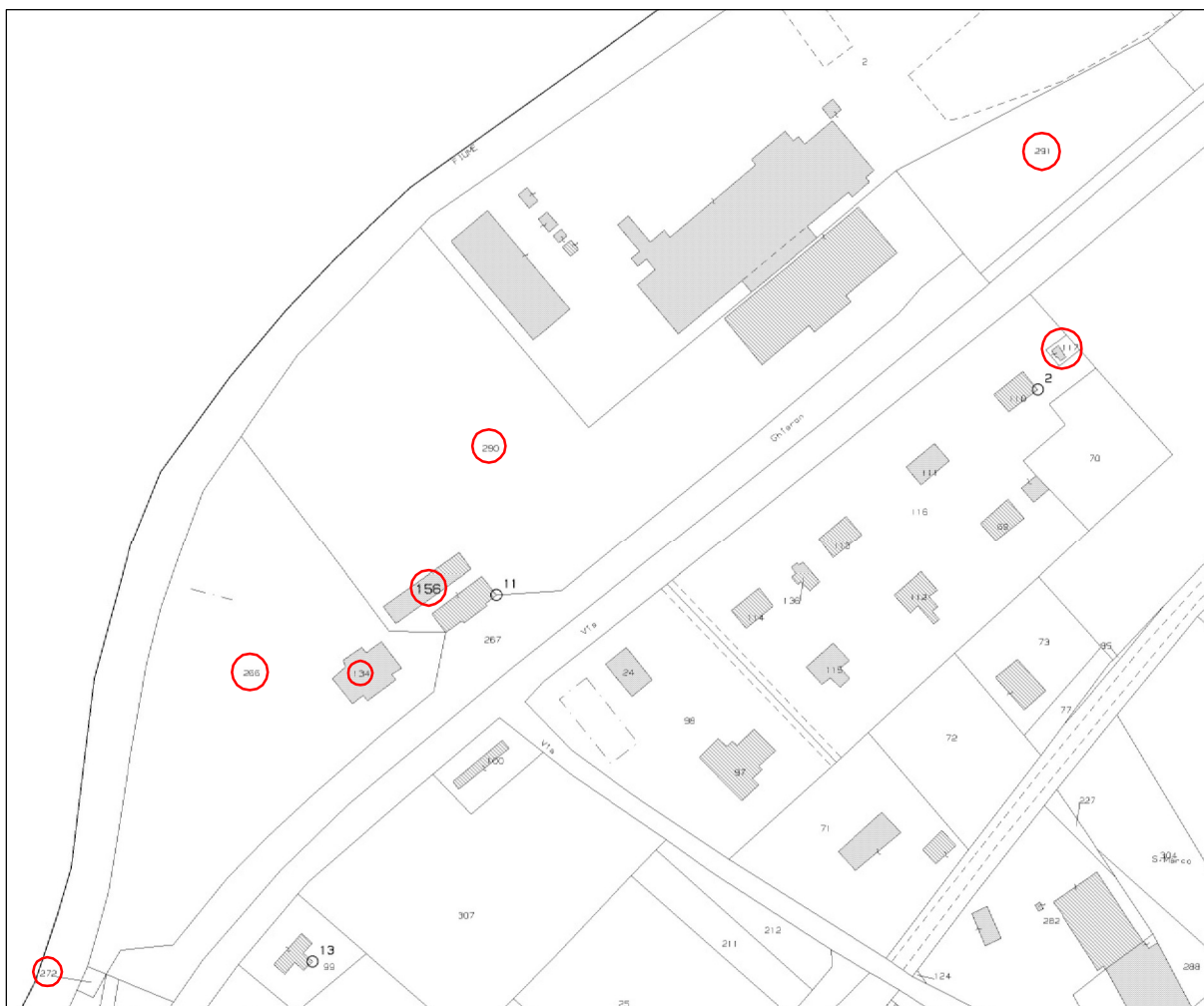


Elaborato grafico

## ESTRATTO DI MAPPA



Comune di Fiscaglia, Sez C Migliaro, Foglio 11  
Mapp. 117 - 134 - 156 - 290 - 266 - 291 - 272



PLANIMETRIE DEL COMPLESSO INDUSTRIALE SITO IN FISCAGLIA (FE)  
FRAZIONE MIGLIARO, VIA SANTA MARGHERITA NN° 12 - 3/B

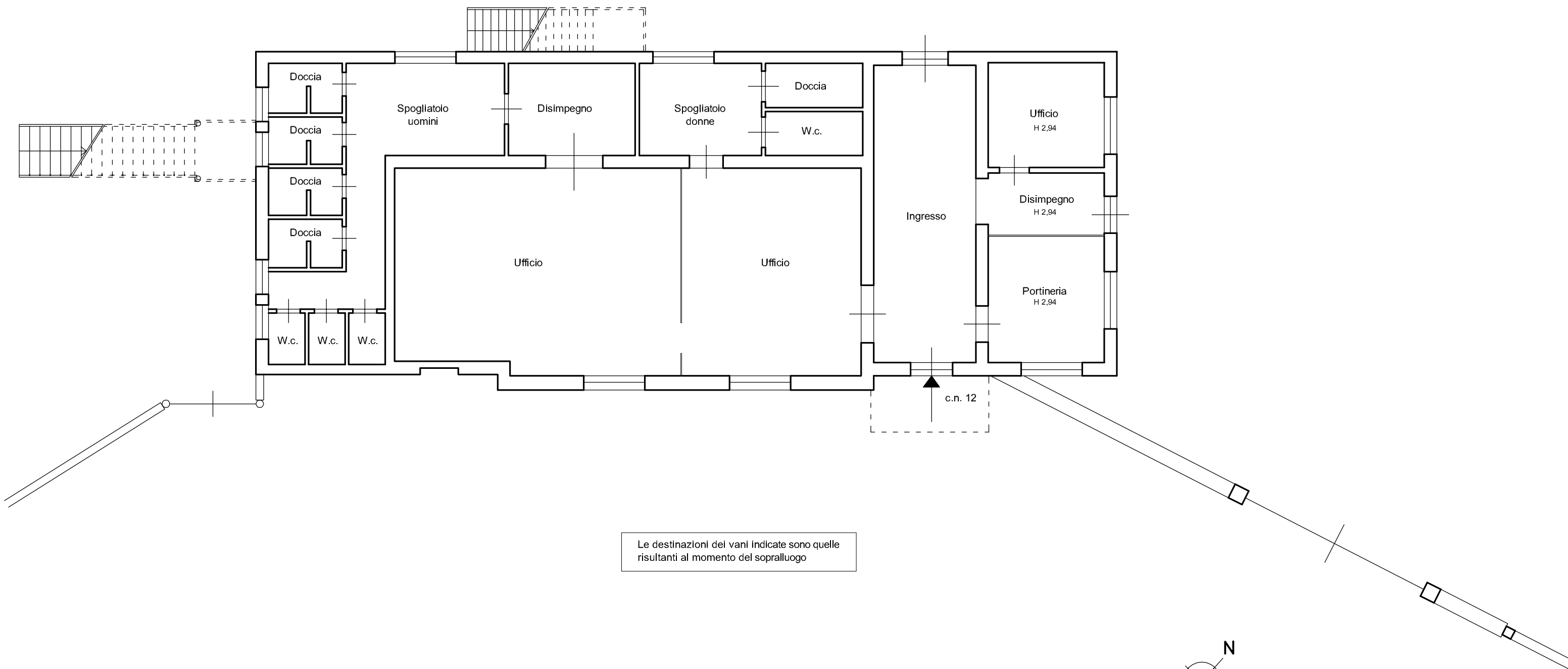
# PLANIMETRIA GENERALE



PALAZZINA  
(M. 290 SUB 1)

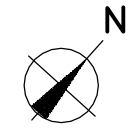
PIANTA PIANO TERRA

H 3,08



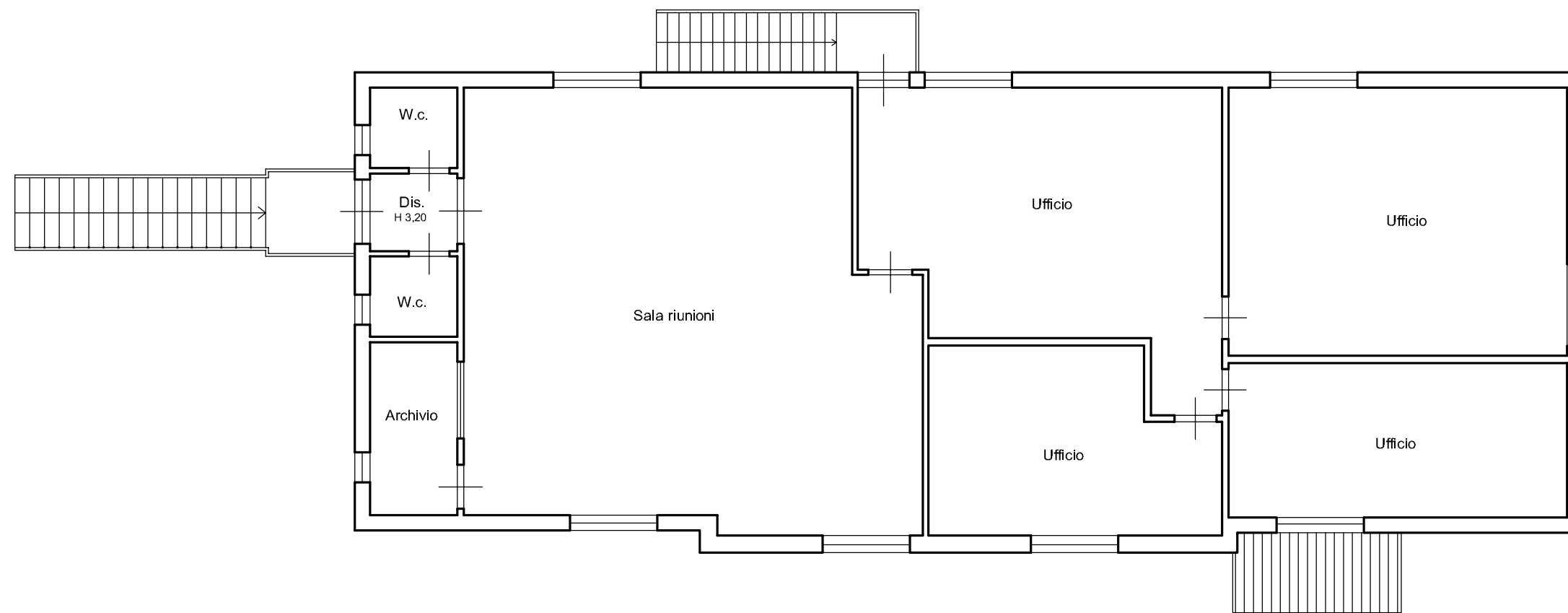
Le destinazioni dei vani indicate sono quelle risultanti al momento del sopralluogo

Scala 1:100

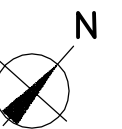


PALAZZINA  
(M. 290 SUB 1)

PIANTA PIANO PRIMO  
H 3,40

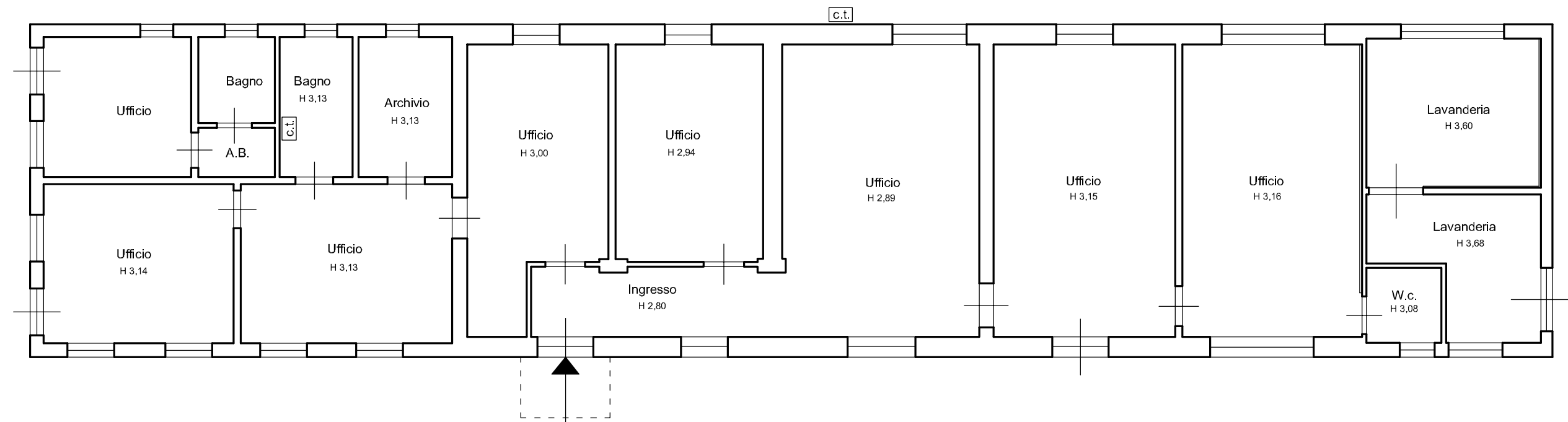


Le destinazioni dei vani indicate sono quelle risultanti al momento del sopralluogo



PALAZZINA  
(M. 156 SUB 5)

PIANTA PIANO TERRA



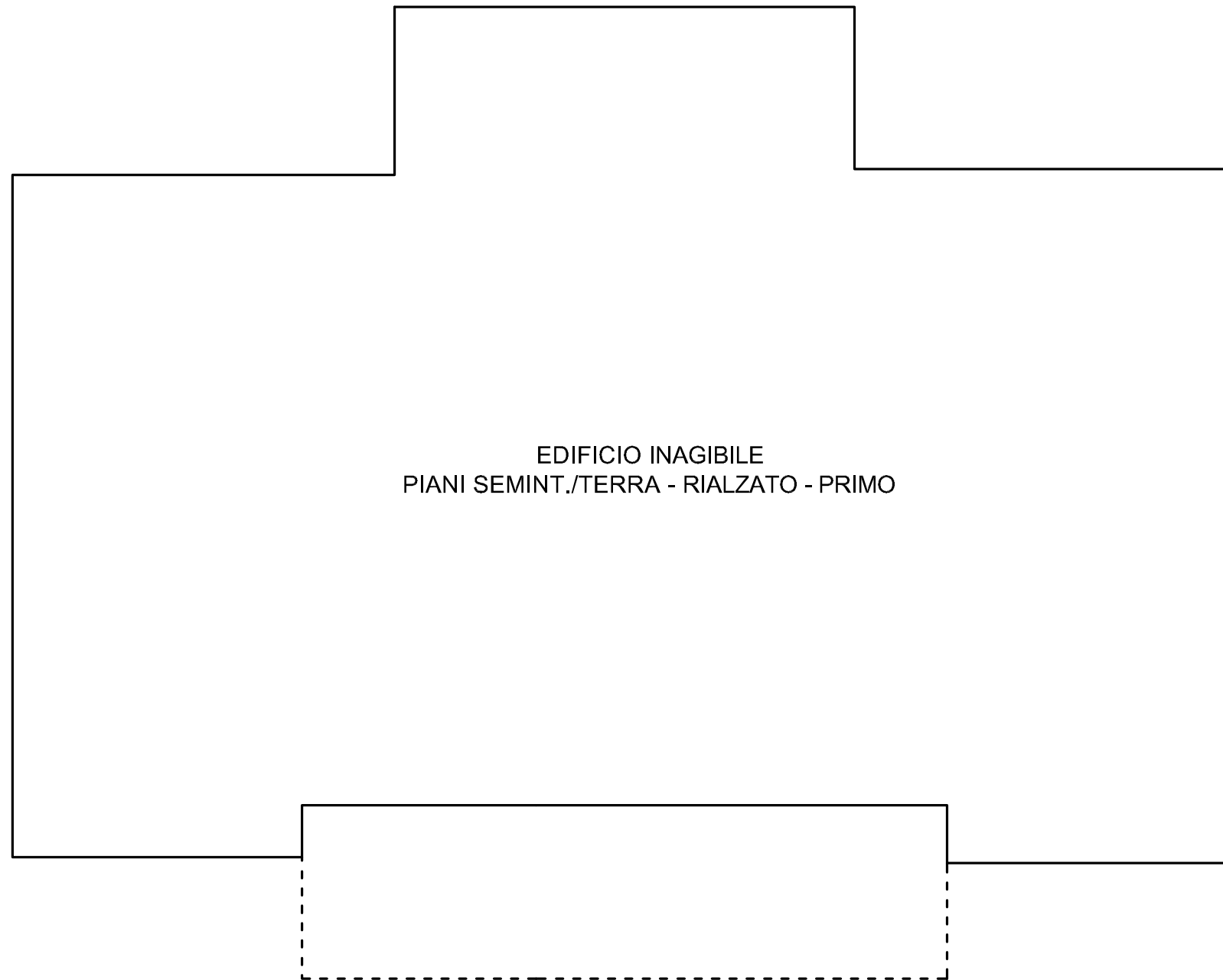
Le destinazioni dei vani indicate sono quelle risultanti al momento del sopralluogo

Scala 1:100

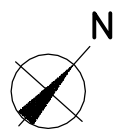


EDIFICIO COLLABENTE  
(M. 134 SUB 4-5-6)

PLANIMETRIA GENERALE

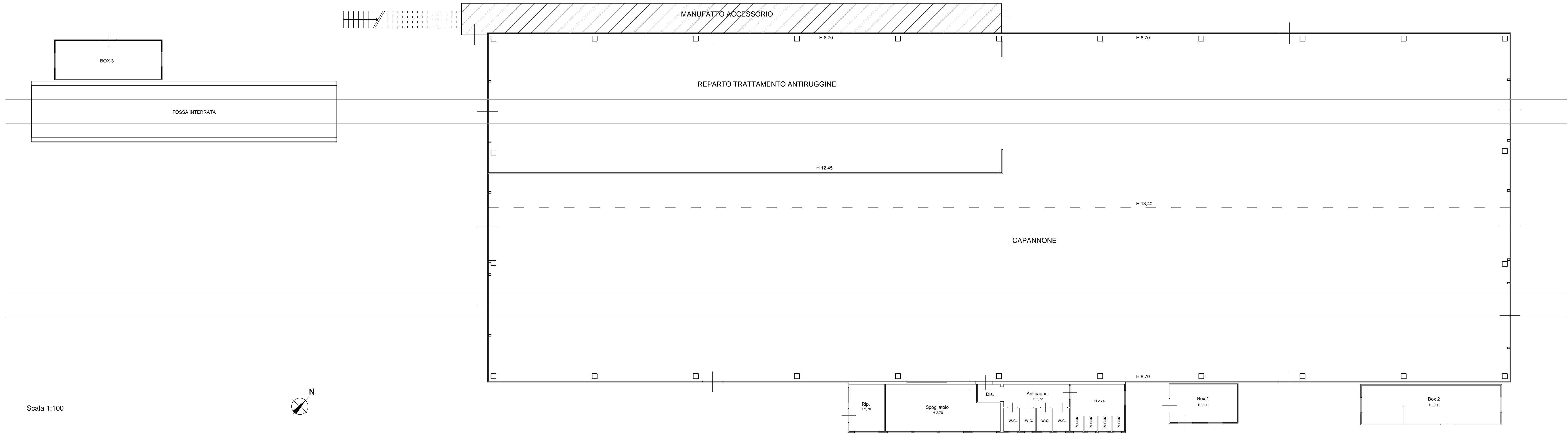


Scala 1:100

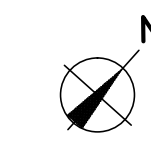


CAPANNONE  
(M. 290 SUB 2)

PIANTA PIANO TERRA



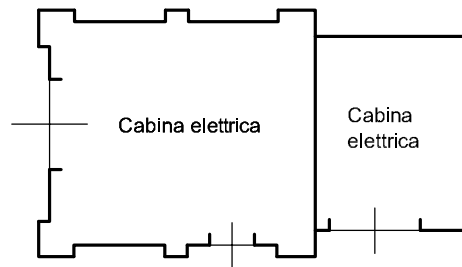
Scala 1:100





# CABINA ELETTRICA (M. 117 SUB 2)

## PIANTA PIANO TERRA



Scala 1:100

