

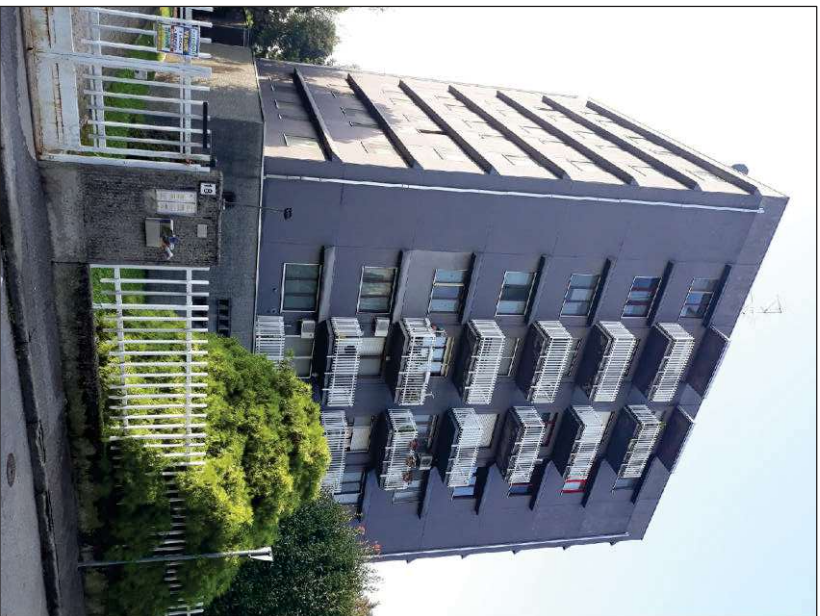
**TRIBUNALE DI VERCELLI**  
**ESECUZIONE IMMOBILIARE N° 90/2023 R.G.E.**

**ALLEGATI ALLA RELAZIONE DEL C.T.U.**

**Allegato 2**

**Documentazione fotografica**

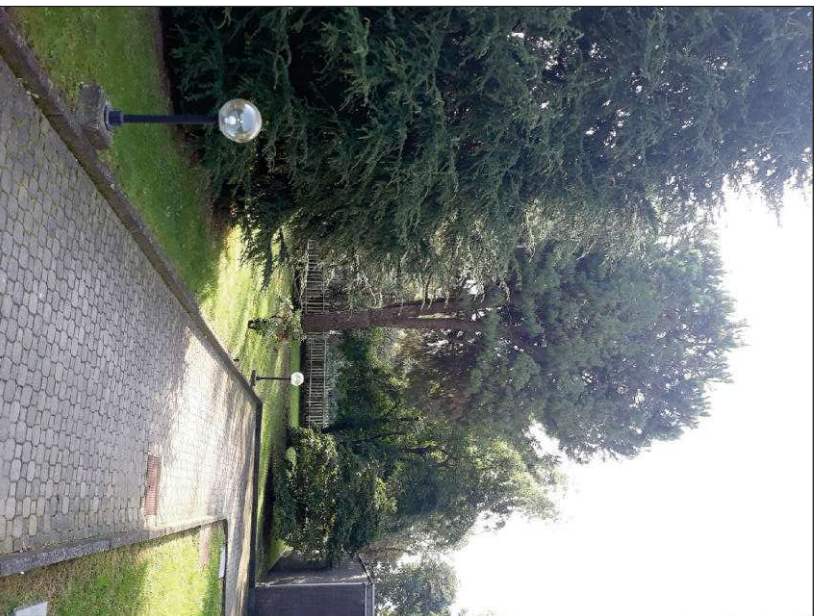




*Vista del condominio da Via Monfalcone*



*Percorso pedonale di ingresso*



*Percorso pedonale e area verde*



*Ingresso pedonale al condominio*





*Atrio ingresso condominiale*



*Ascensore al piano*



*Vano scale comune*



*Ingresso comune di piano agli alloggi*

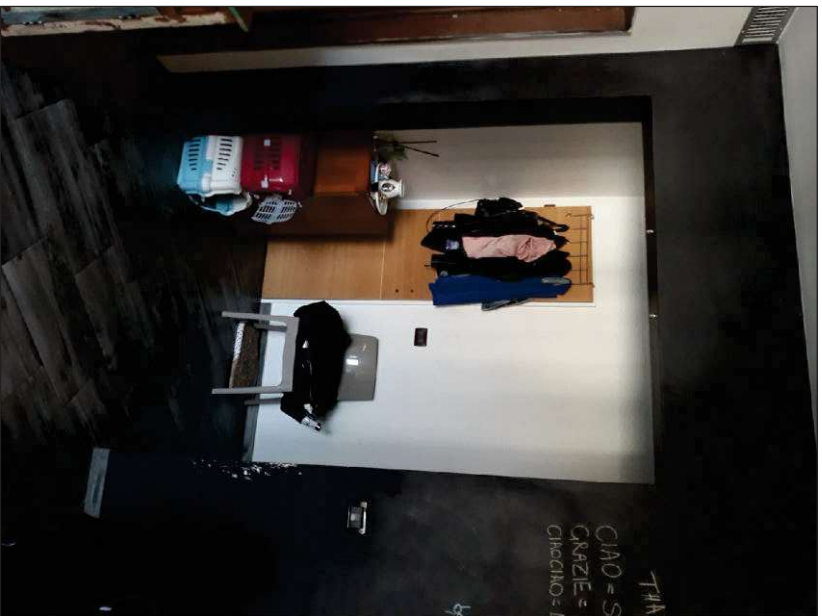




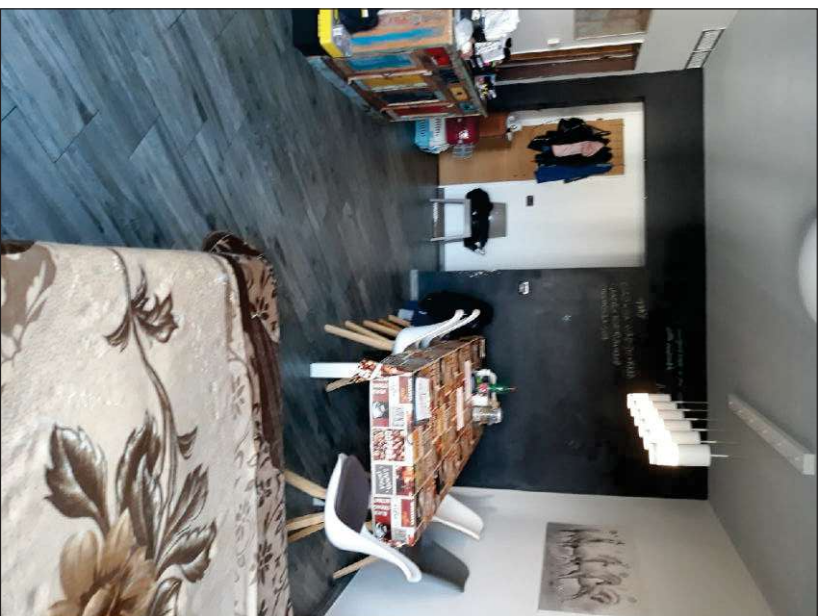
Ingresso alloggio (su spazio comune)



Ingresso alloggio

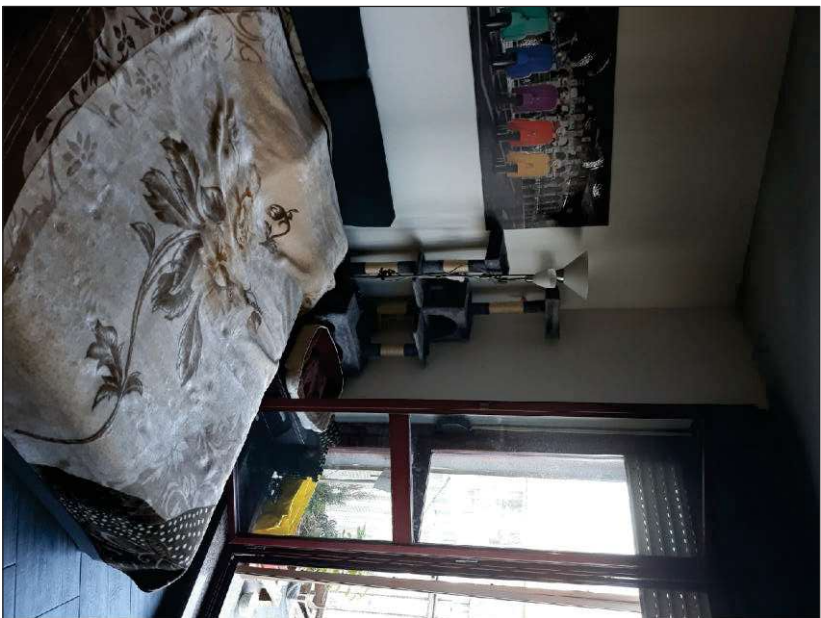


Ingresso alloggio (da soggiorno)

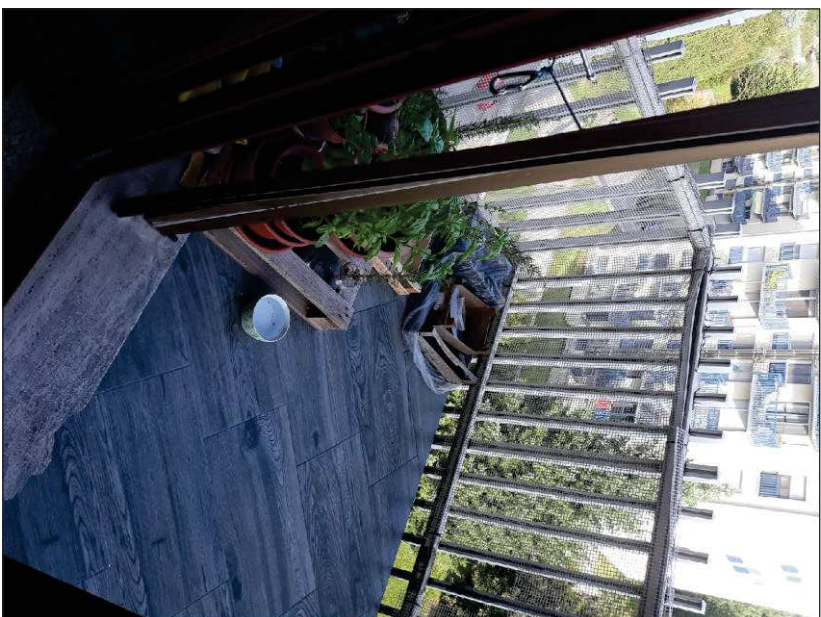


Soggiorno/Camera

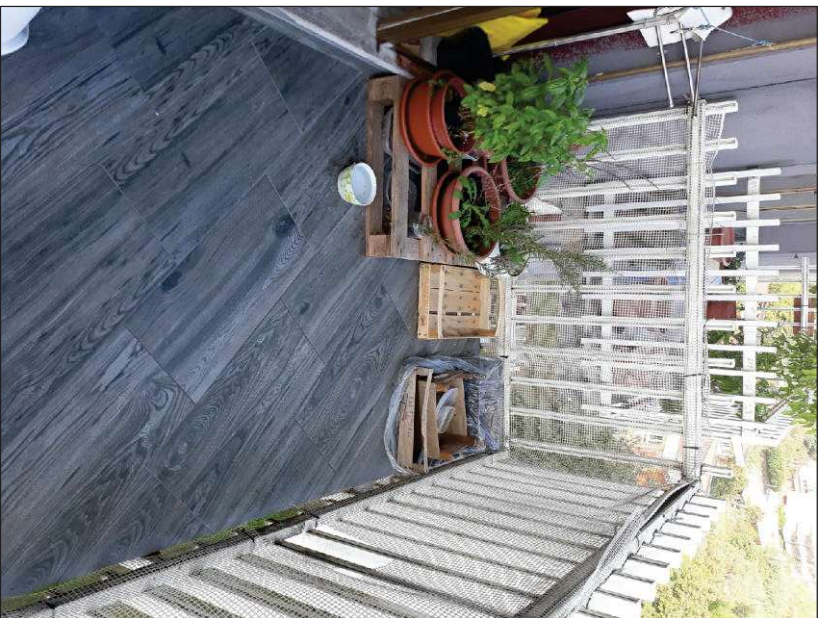




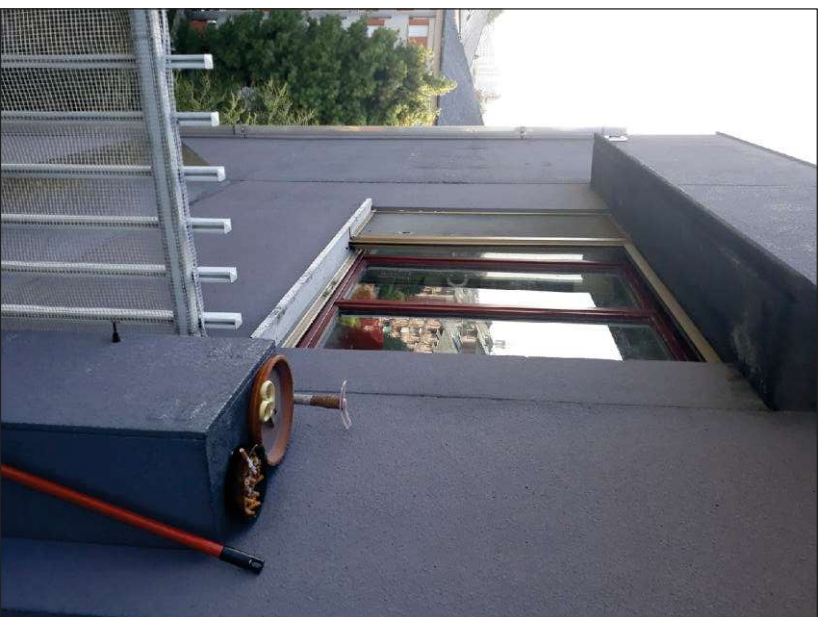
*Soggiorno/Camera*



*Balcone*

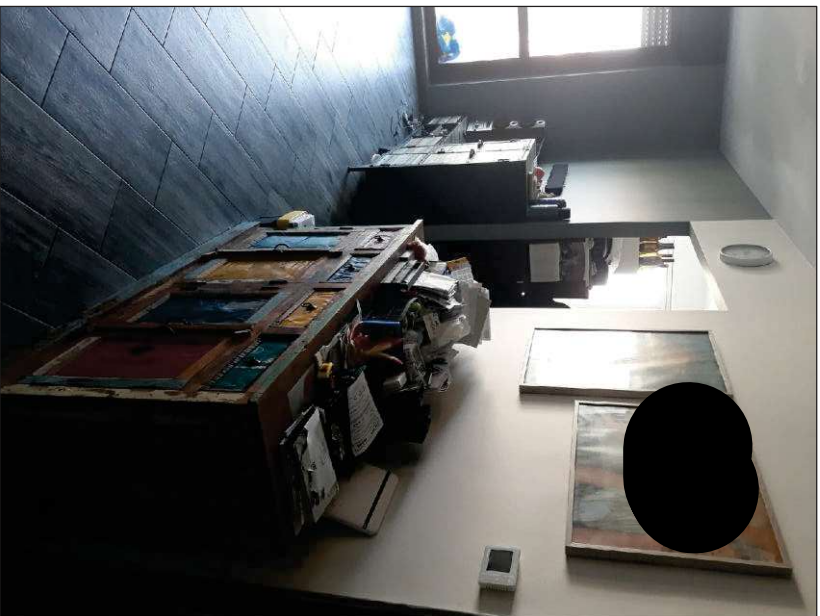


*Balcone*

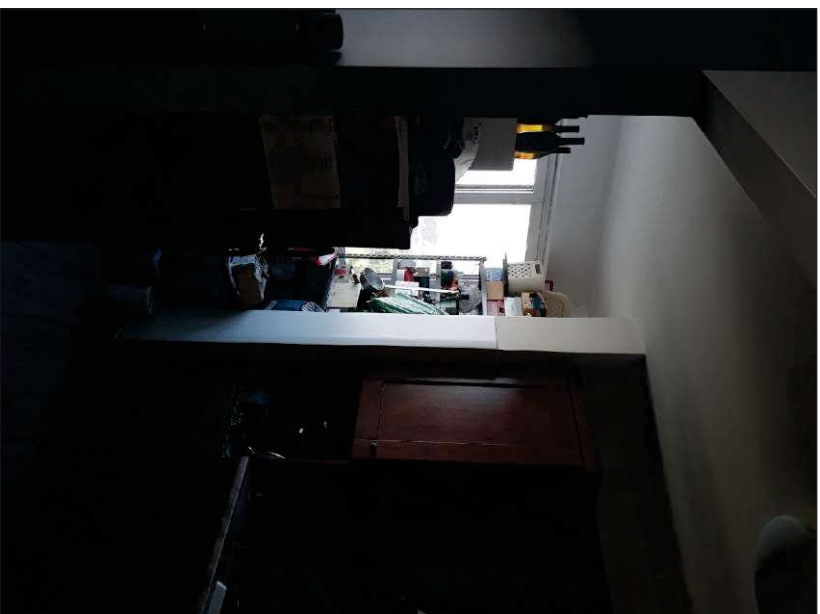


*Vista esterna della finestra Cucina*

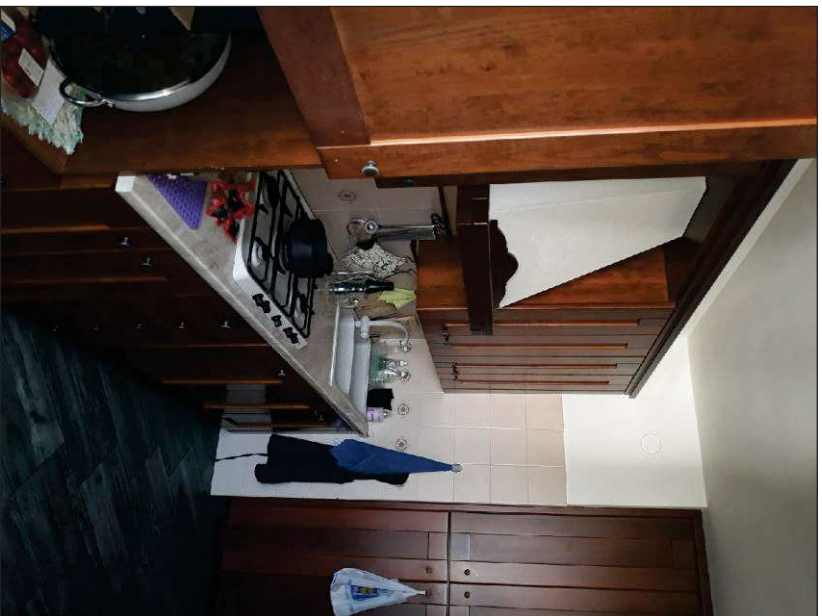




*Soggiorno con ingresso a Cucina*



*Cucina*



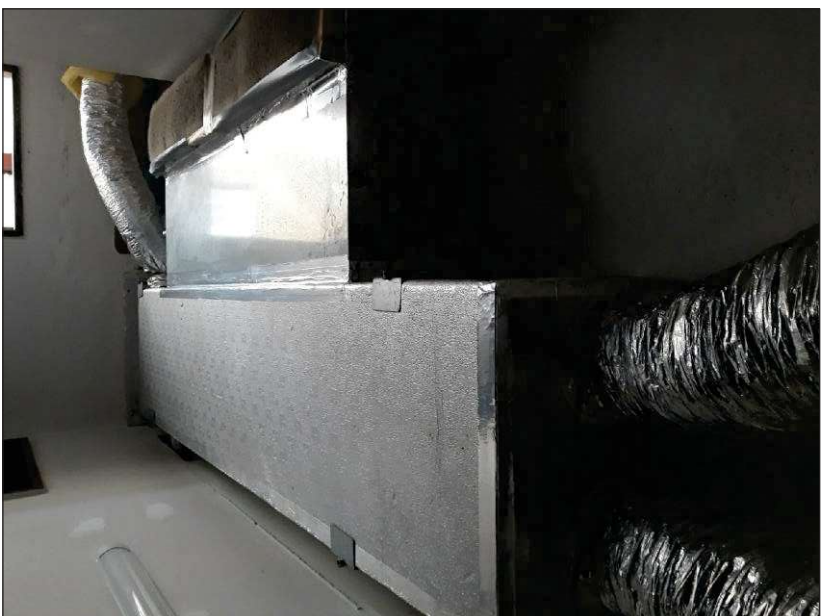
*Cucina*



*Cucina (parte ex loggia)*



*Disimpegno centrale*



*Disimpegno centrale (soffitto)  
Canalizzazioni impianto di riscaldamento ad aria*



*Bagno principale*

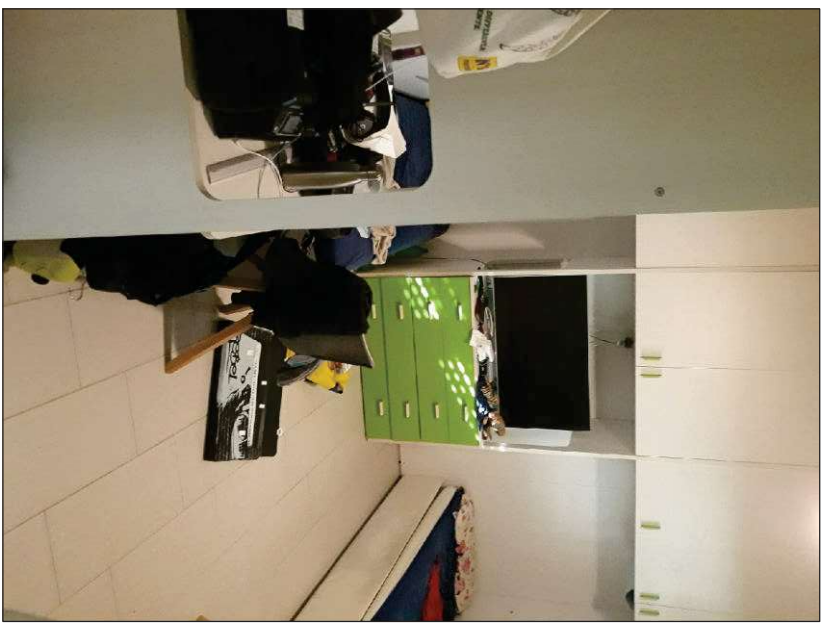


*Bagno secondario*





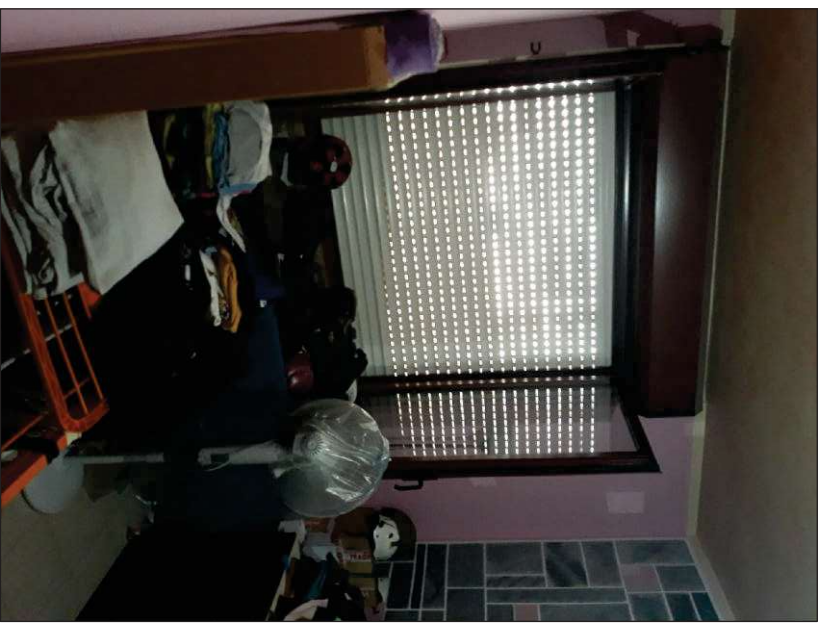
Camera 1 (ingresso)



Camera 1



Camera 2 (ingresso)



Camera 2





Particolare bocchetta di ventilazione Camera 1  
imp. riscaldamento ad aria dell'alloggio



Corridoio cantine

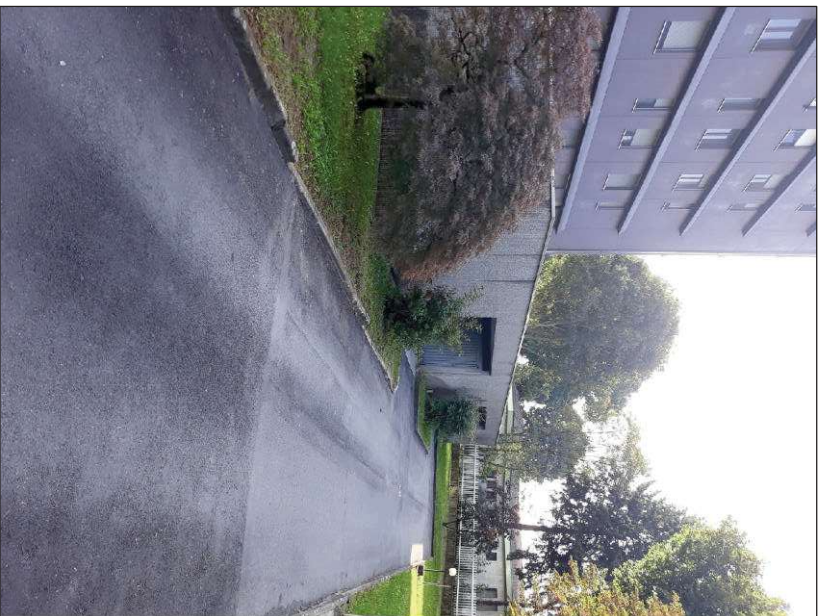


Ingresso cantina



Cantina (Interno)

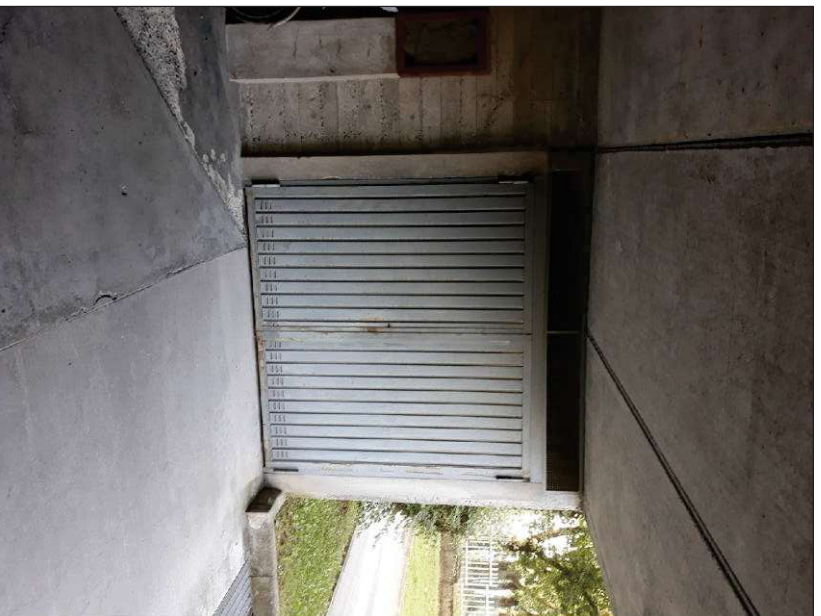




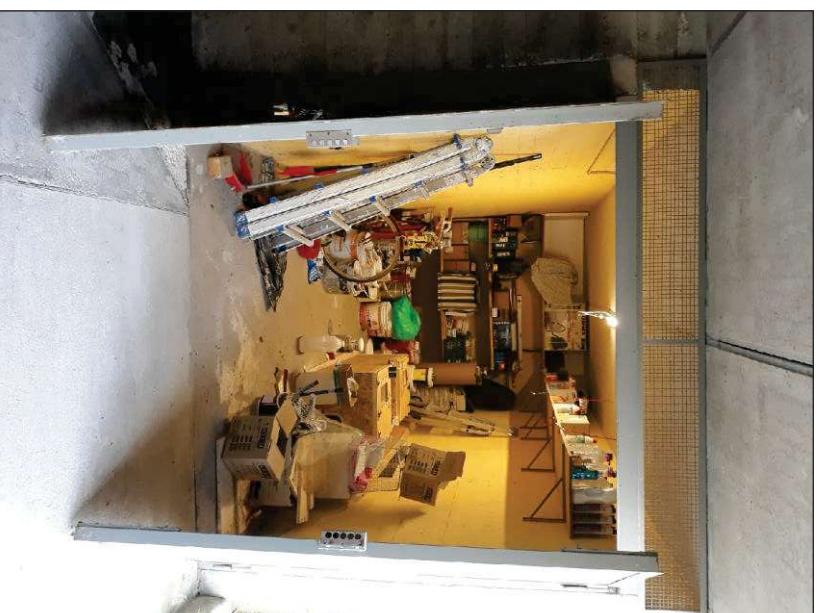
*Percorso carrajo di accesso alle autorimesse*



*Corsia distribuzione alle autorimesse*



*Autorimessa (portone ingresso)*



*Autorimessa (interno)*