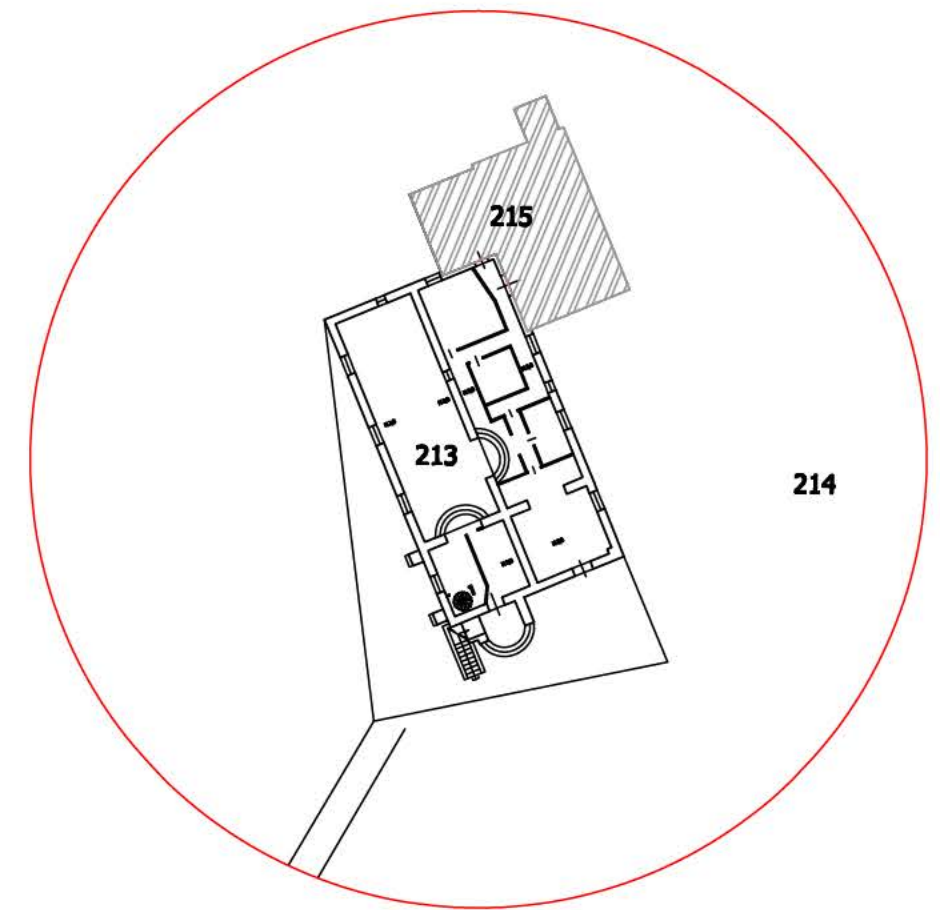
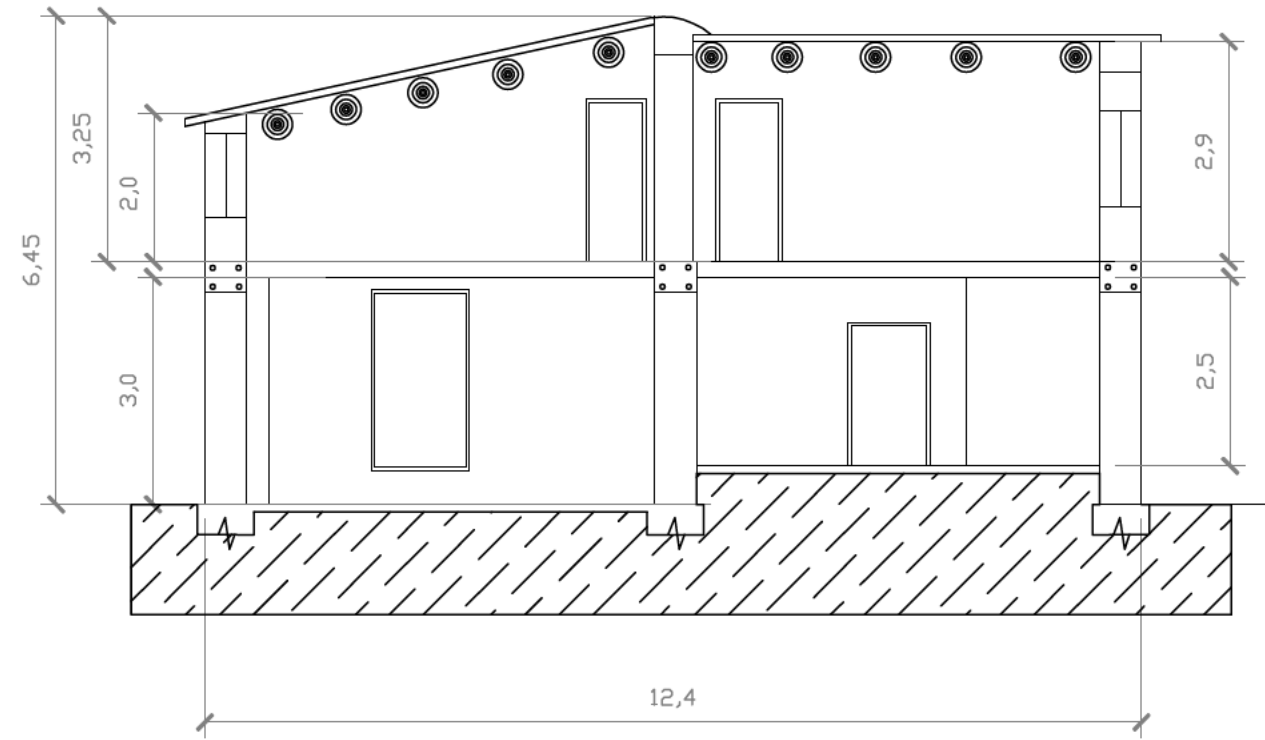


STRALCIO FOLIO CATASTALE N. 7
Scala 1/1000

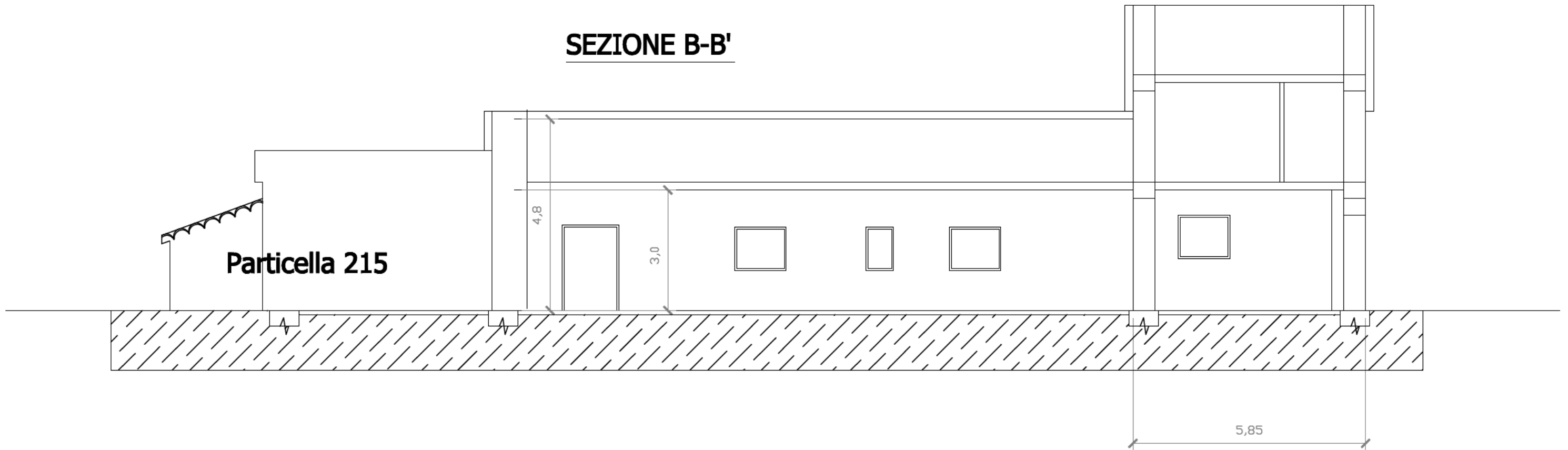


PARTICOLARE Scala 1/500

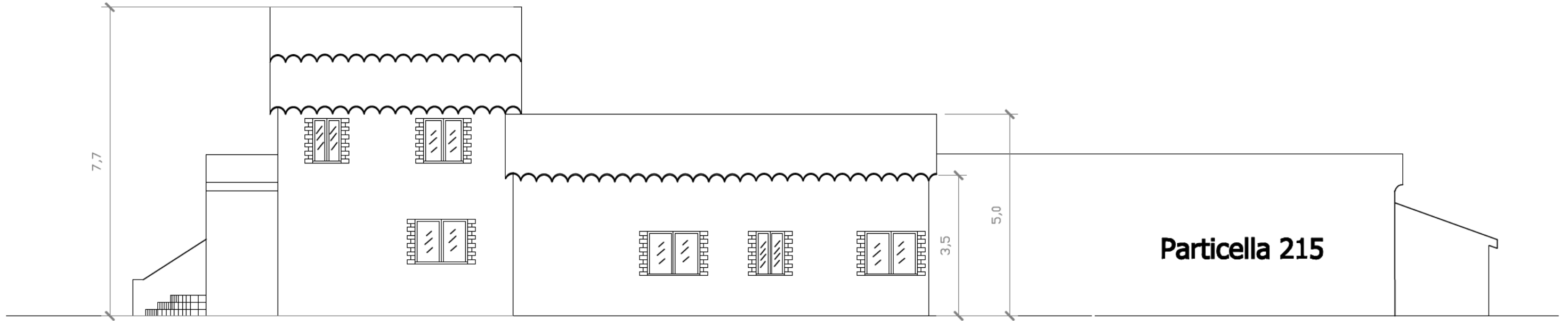
SEZIONE A-A'



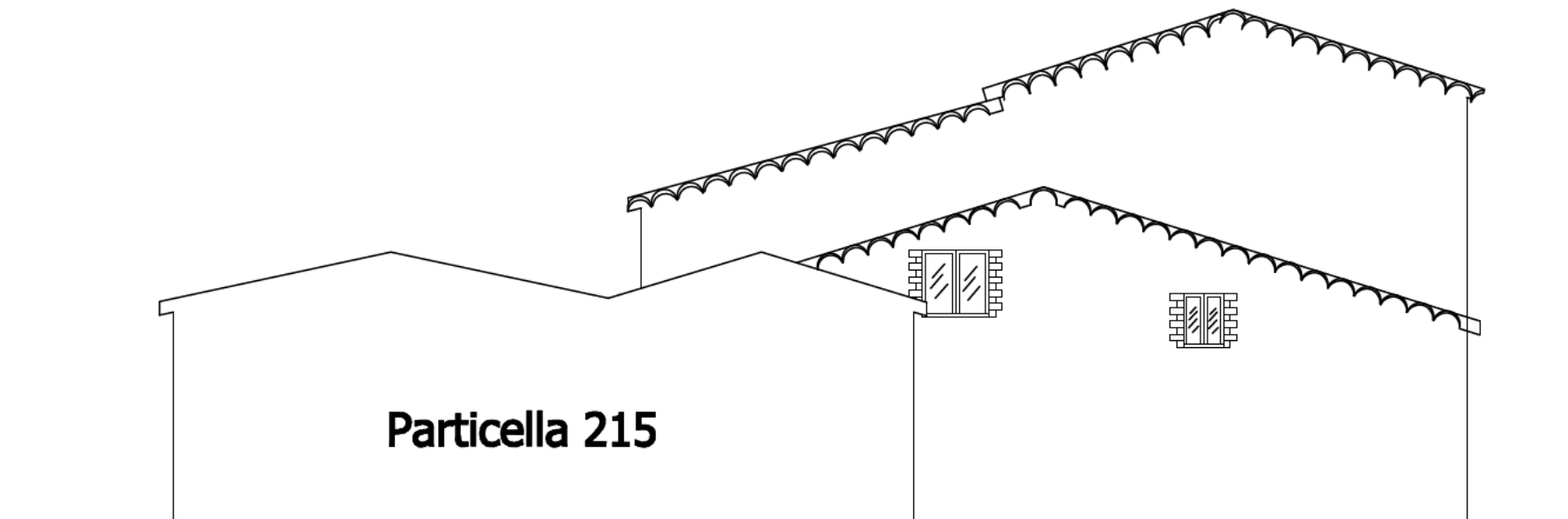
SEZIONE B-B'

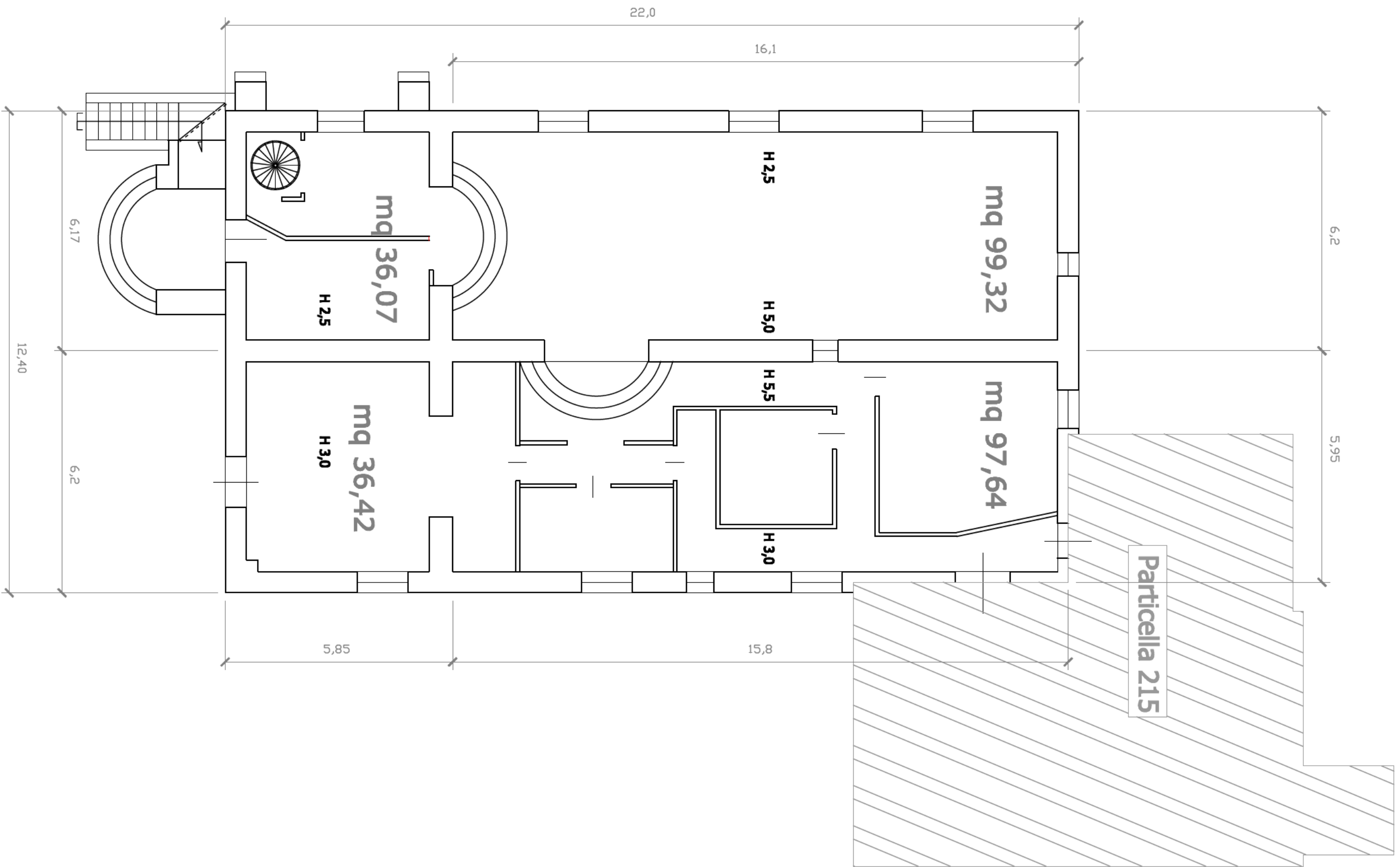


PROSPETTO LATERALE AD EST



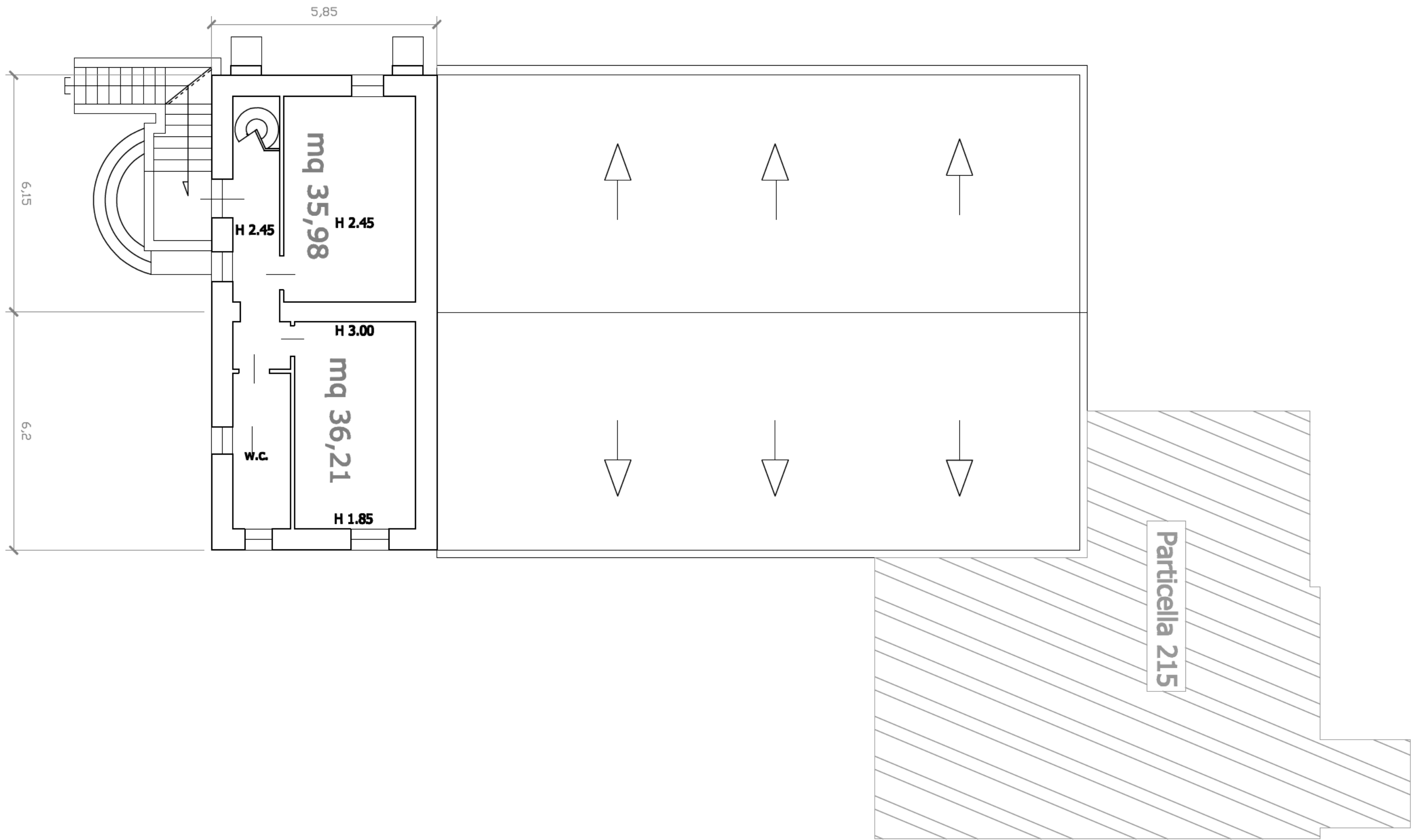
PROSPETTO RETRO A NORD

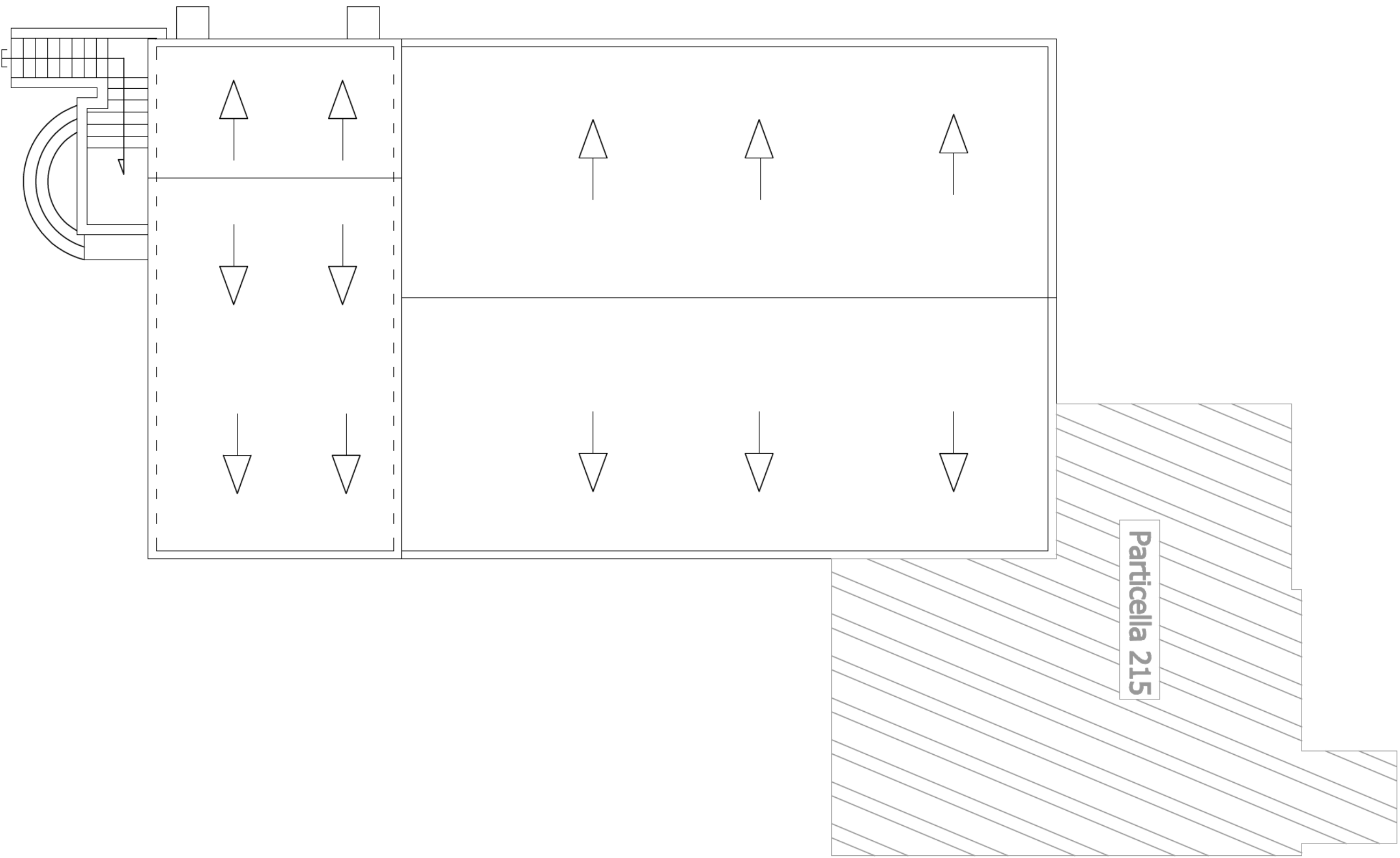




PIANTA PIANO TERRA Scale 1/100

PIANTA PIANO PRIMO Scala 1/100

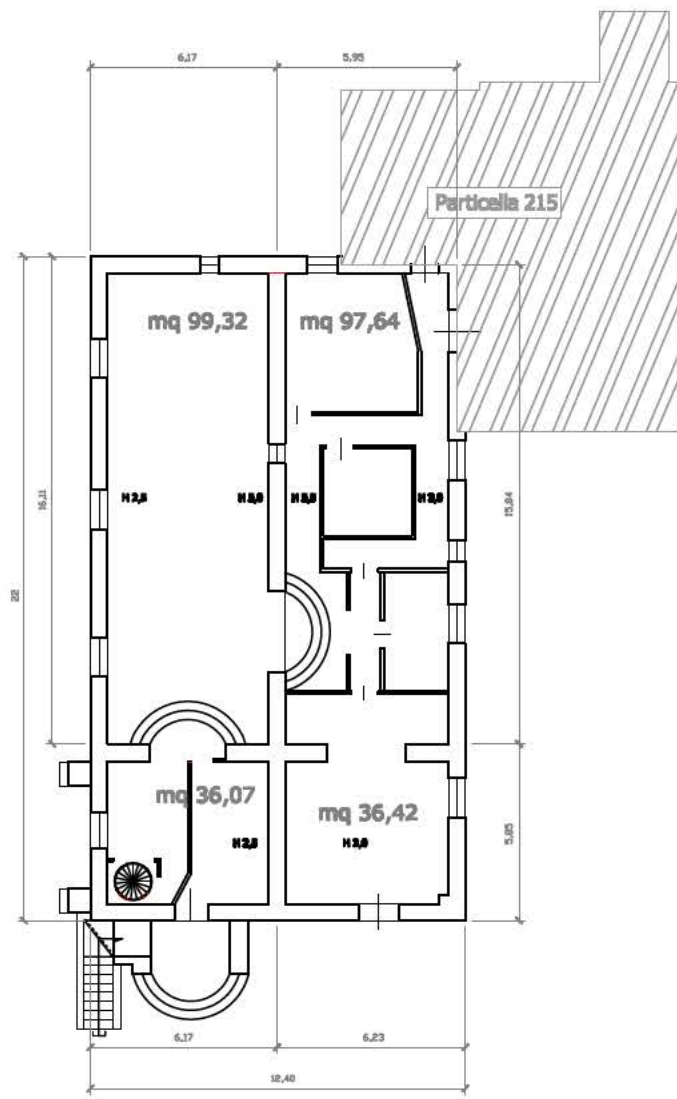




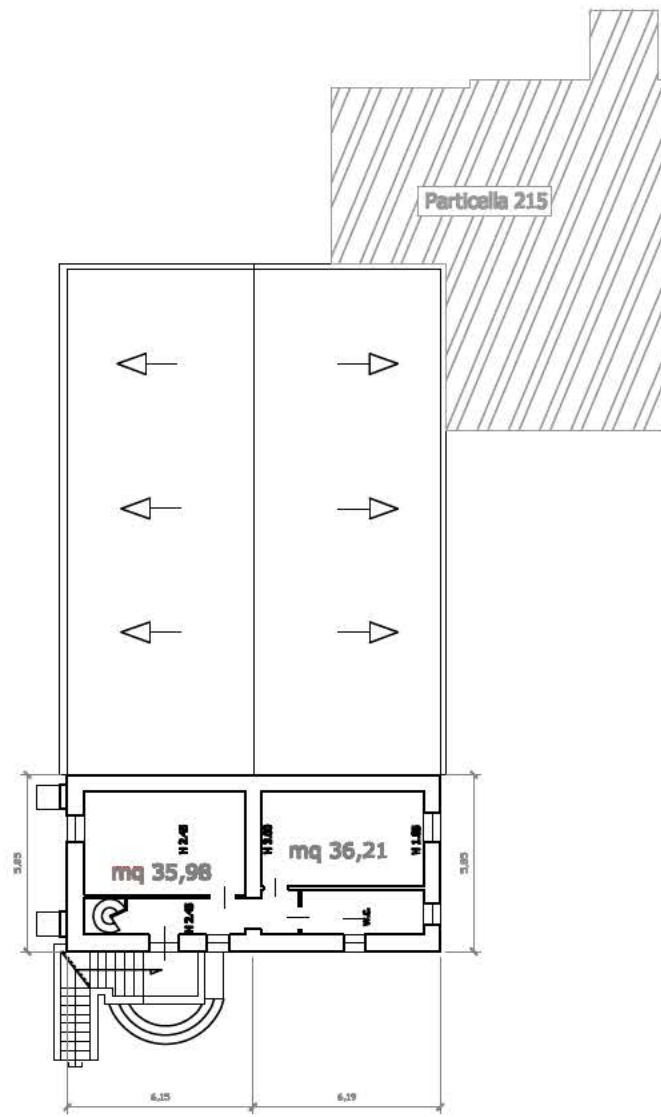
Particella 215

PIANTA COPERTURA

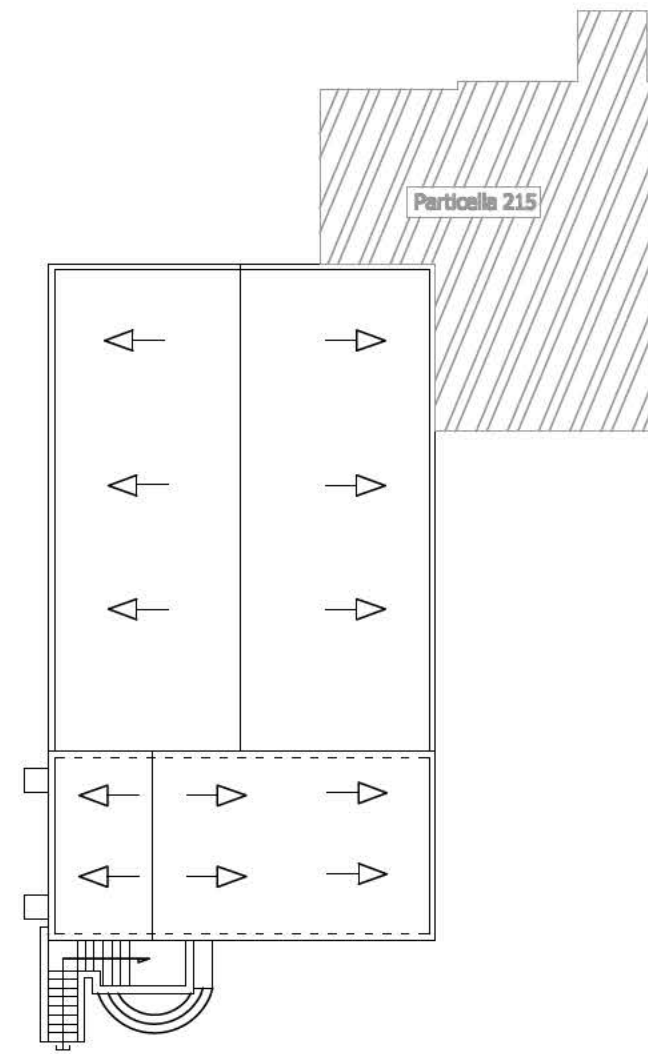
Scala 1/100



PIANTA PIANO TERRA Scala 1/200



PIANTA PIANO PRIMO Scala 1/200

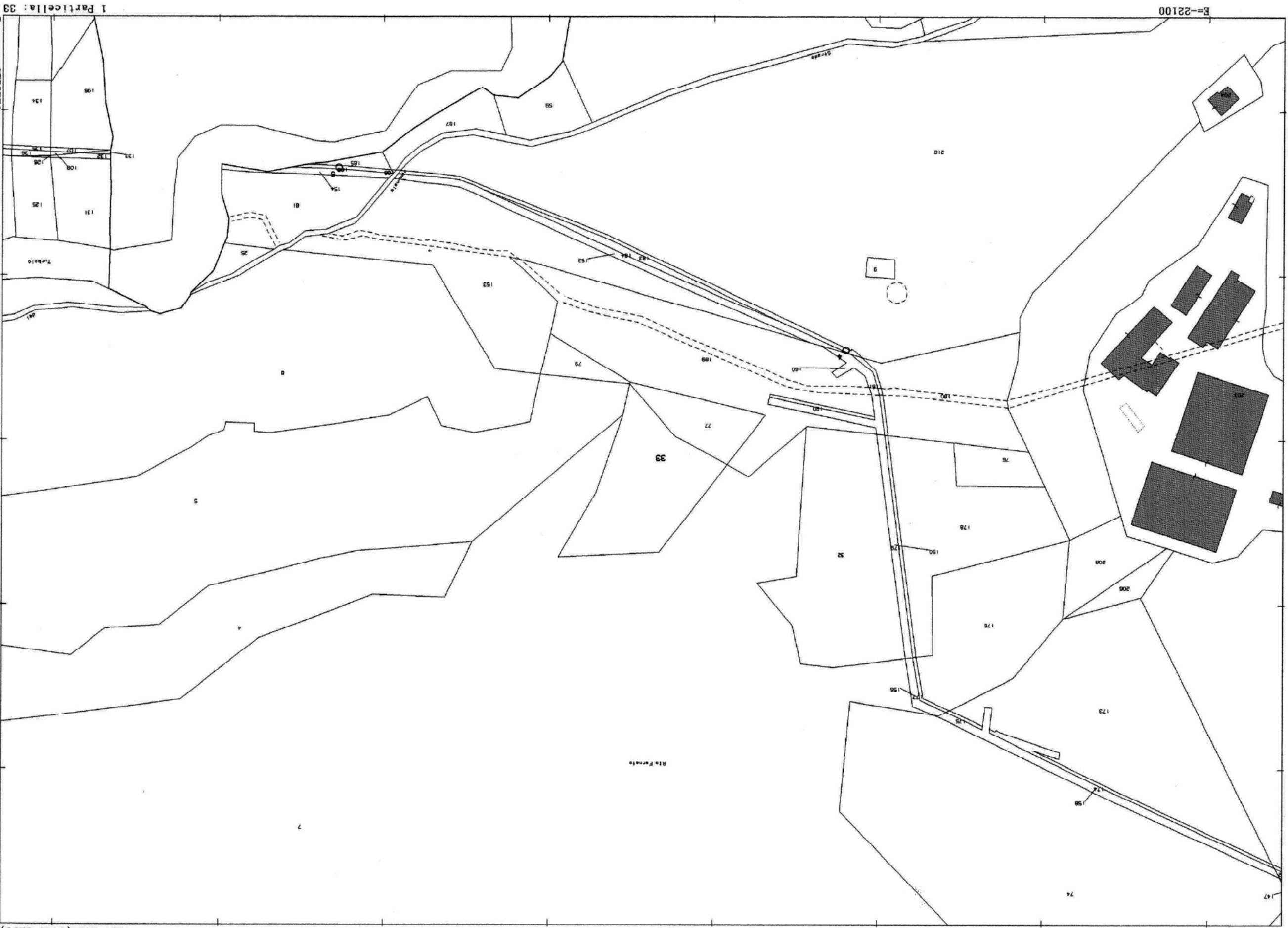


PIANTA COPERTURA Scala 1/200

29-MAR-2017 9:15:49
Prot. n. 119638/2017

Scala originale: 1:2000
Dimensione cartice: 776.000 x 552.000 metri

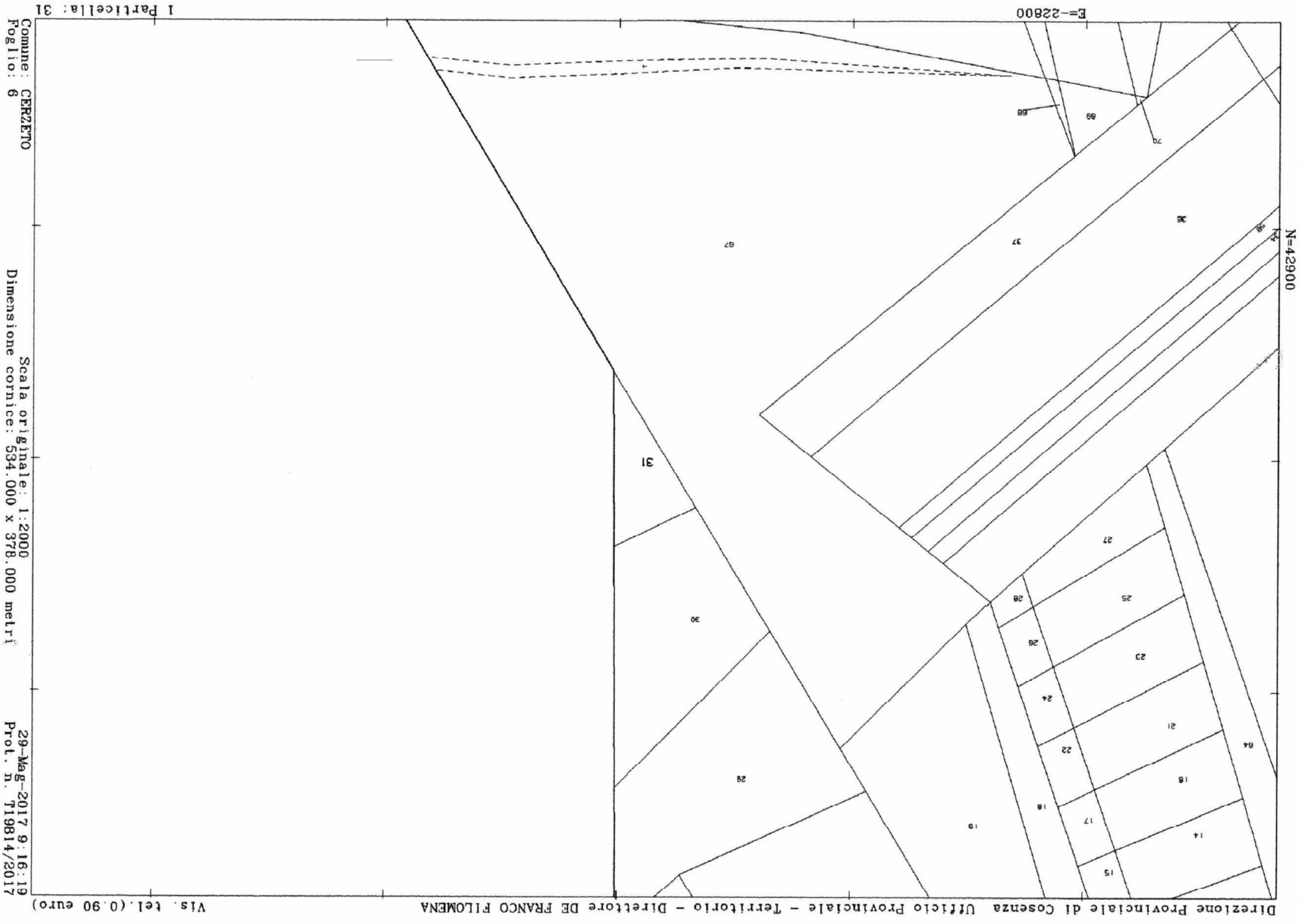
Comune: CERRETO
Foglio: 7



N=42800

E=22100

1 Particella: 33



Comune: CERZETO
Foglio: 6

Scala originale: 1:2000
Dimensione cornice: 534.000 x 378.000 metri

29-Mag-2017 9:16:19
Prot. n. T19814/2017

Vis. tel. (0.90 euro)

Direzione Provinciale di Cosenza Ufficio Provinciale - Territorio - Direttore DE FRANCO FILOMENA

1 Particella: 31

E=-22800

N=42900

29-Mag-2017 9.30.59
Prot. n. 128535/2017

Scala originale: 1:2000
Dimensione cornice: 776.000 x 552.000 metri

Comune: CERZETO
Foglio: 7



N=42800

E=21800

1 Particella: 5