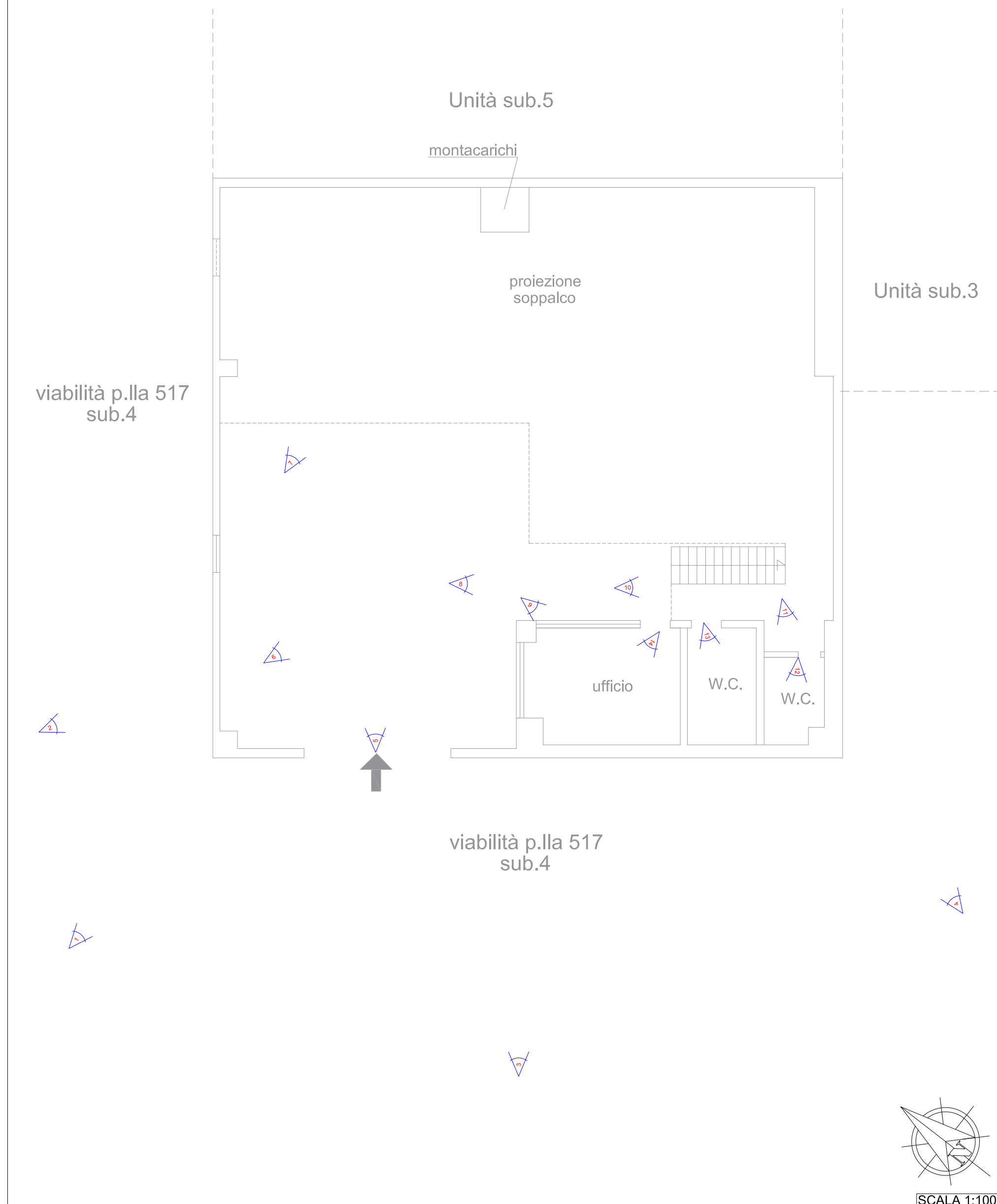


PIANTA PIANO TERRA

Salerno - Via Acquasanta n.5 - Fg.54 p.Ila 517 sub.1

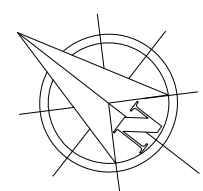
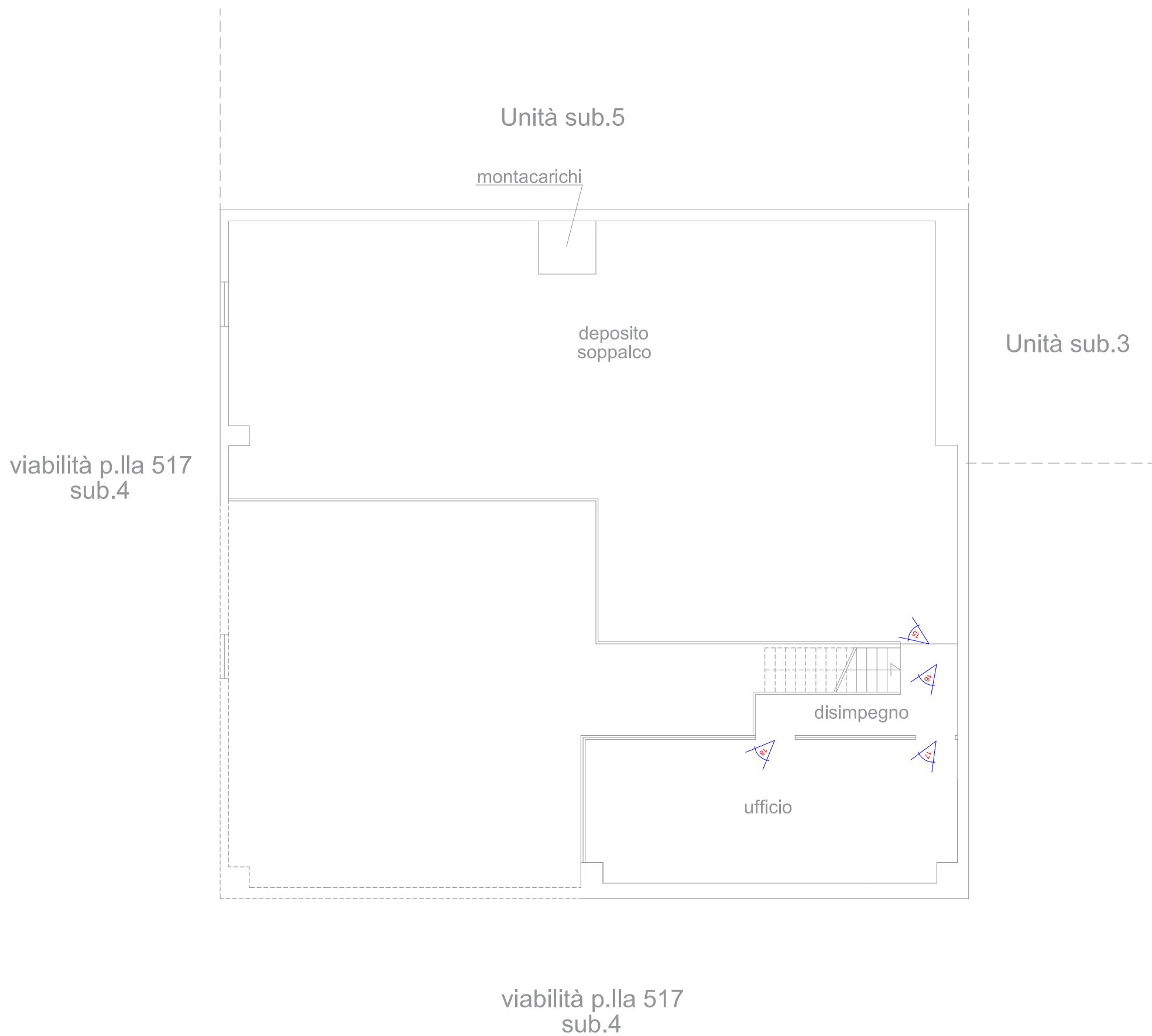
CONI OTTICI



PIANTA PIANO SOPPALCO

Salerno - Via Acquasanta n.5 - Fg.54 p.Ila 517 sub.1

CONI OTTICI





(1)



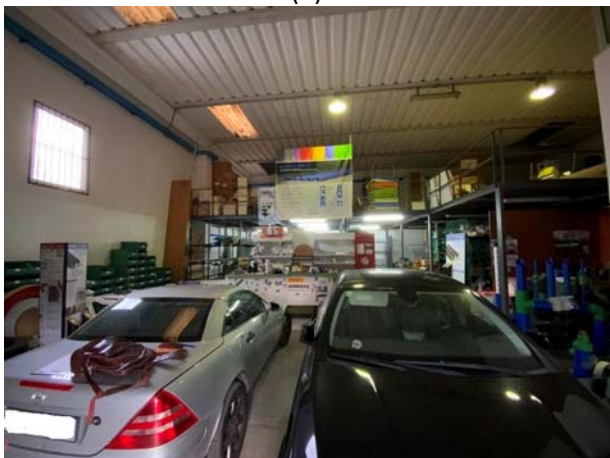
(2)



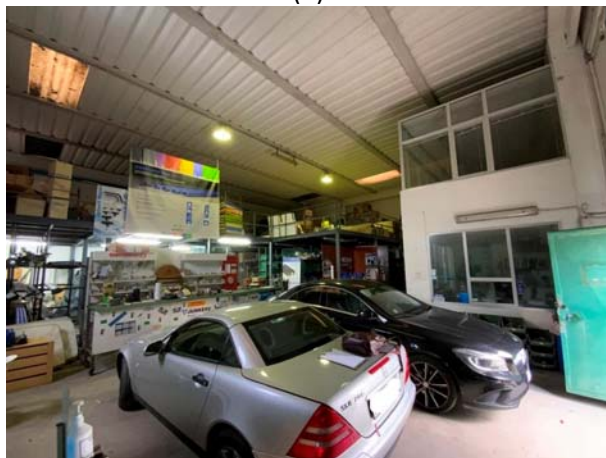
(3)



(4)



(5)



(6)



(7)



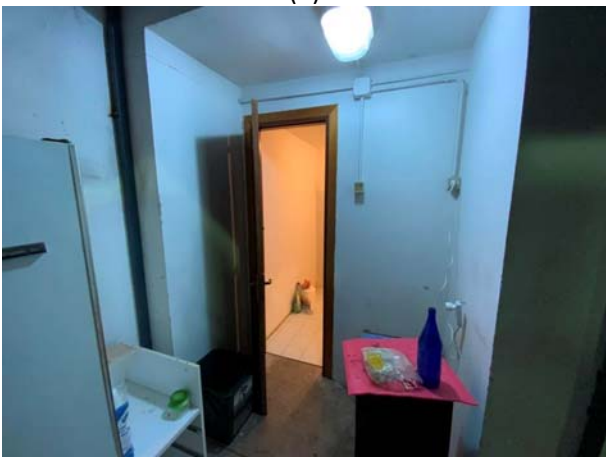
(8)



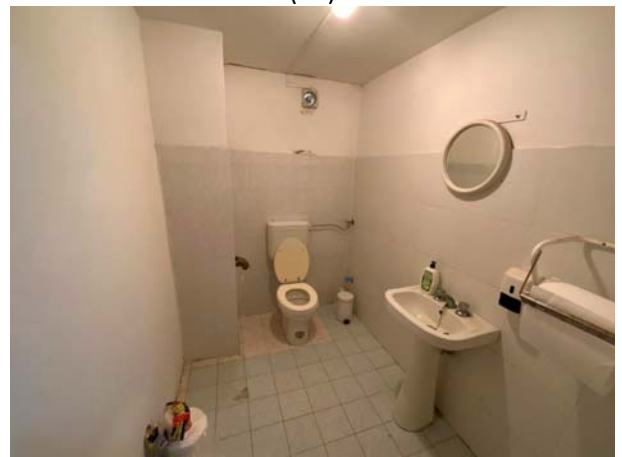
(9)



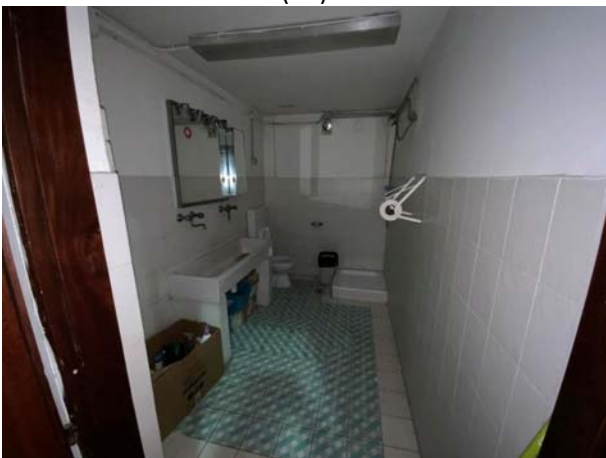
(10)



(11)



(12)



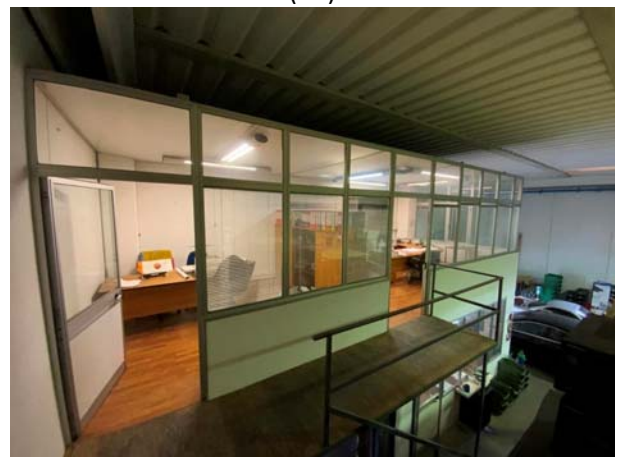
(13)



(14)



(15)



(16)



(17)



(18)