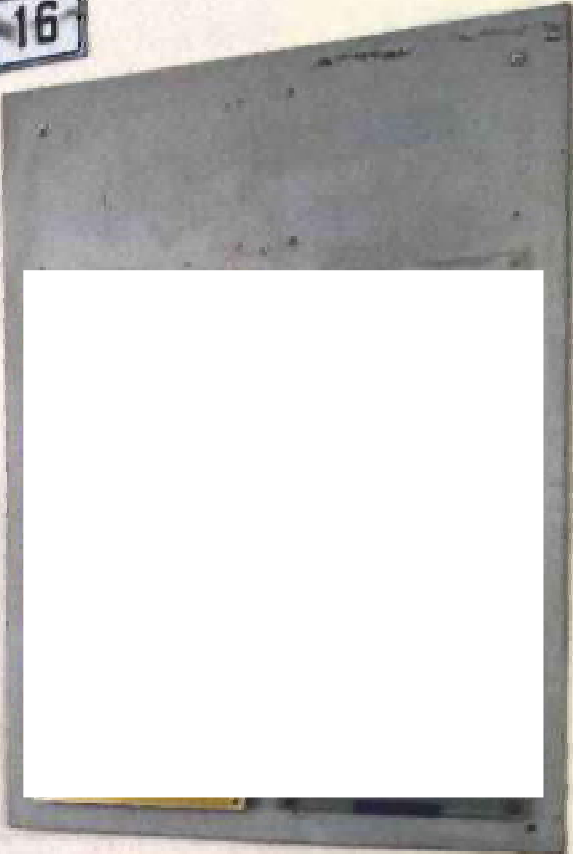
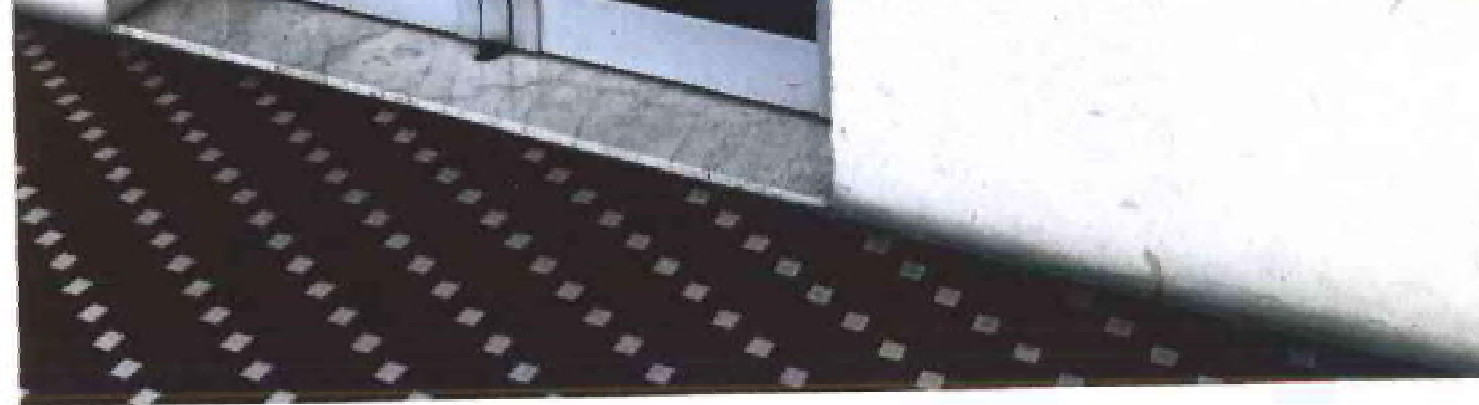


ALLEGATO n° 8
Foto n° 1/43

16



16



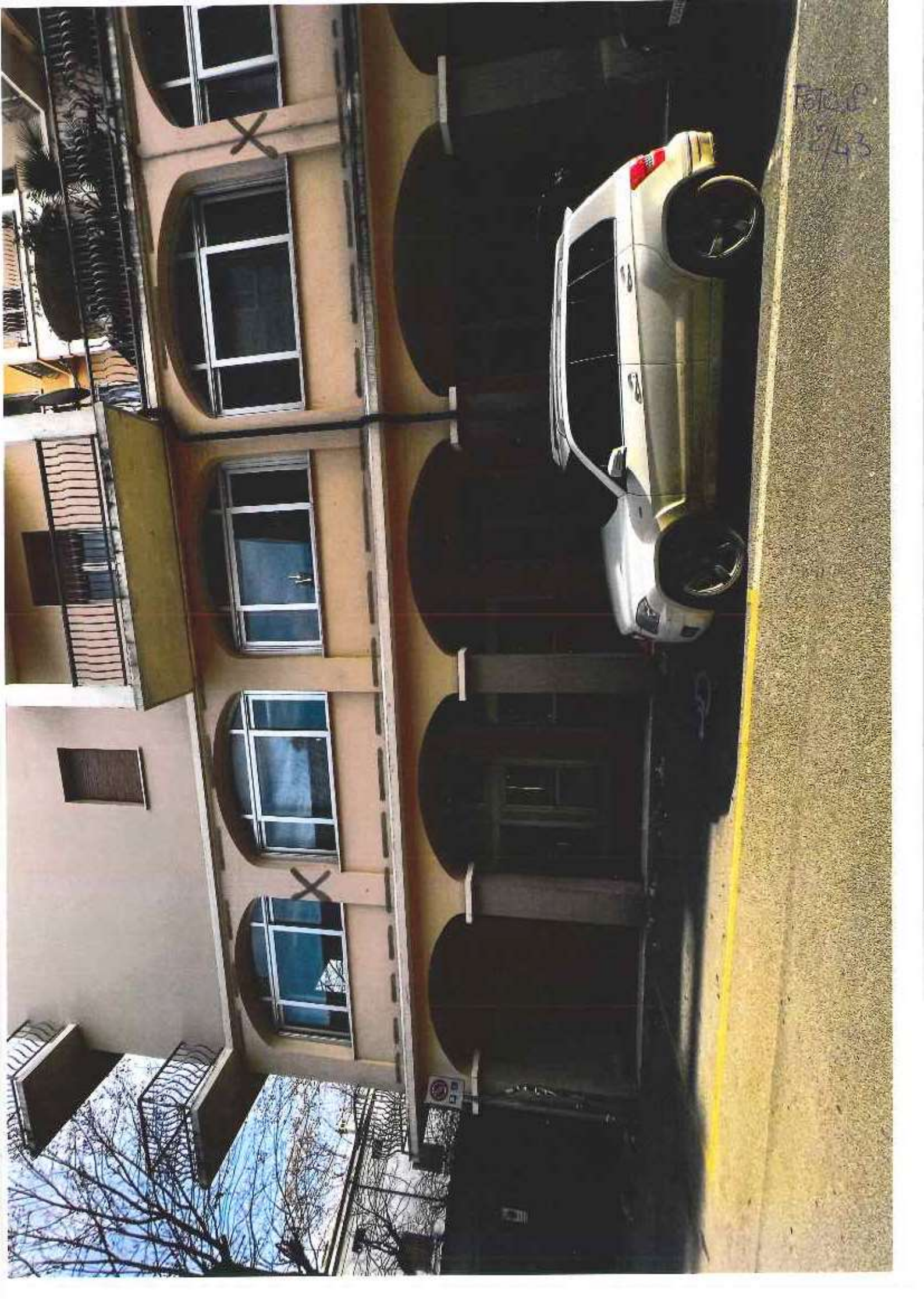


Foto n° 3/43



Foto n° 4/43



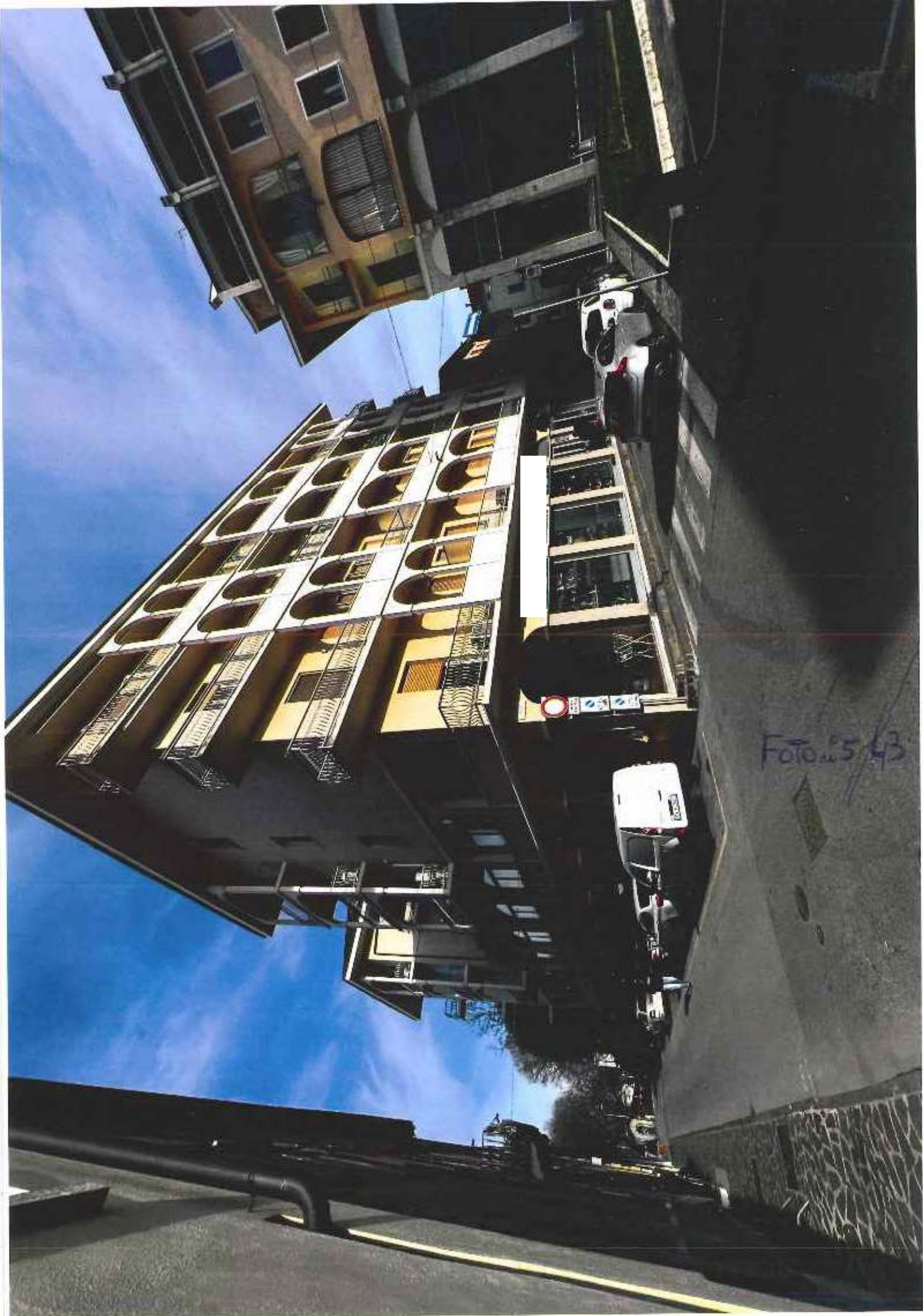
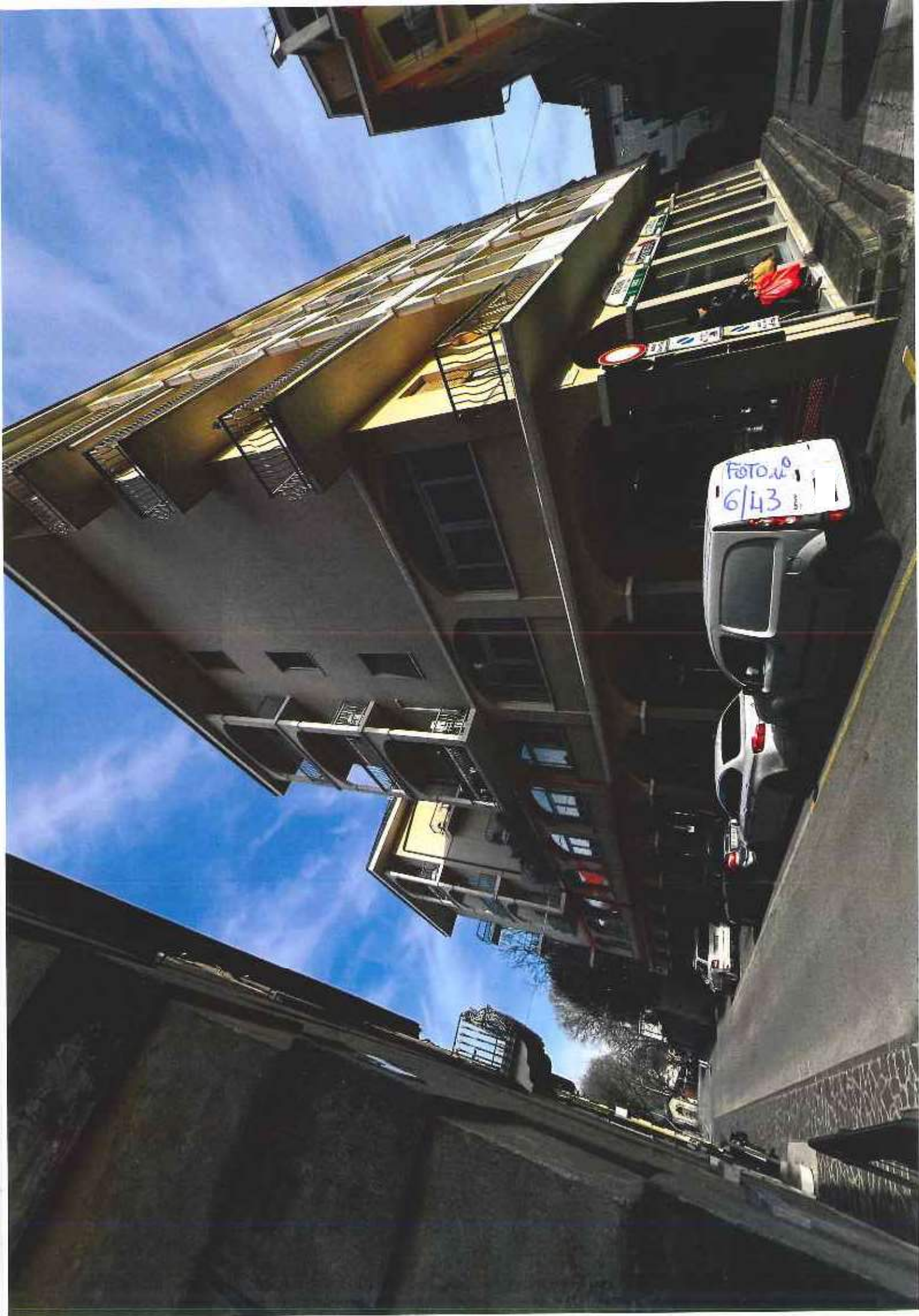


Foto. 5/43



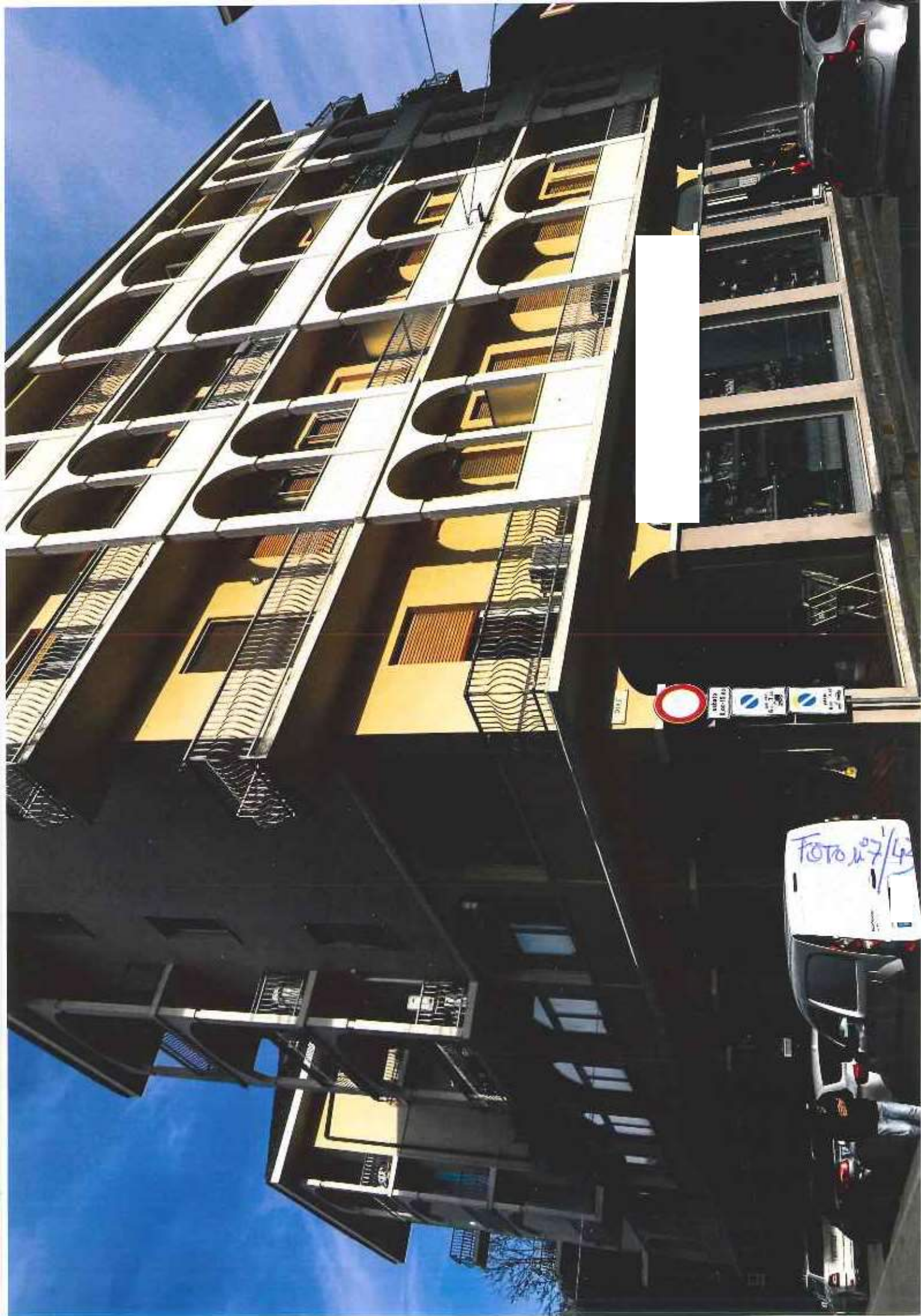


Foto n° 8/43

SCALA B)





Foto n° 40/43

INGRESSO DA VIA
SANTARELLI
n° 16

TRAMITE
LA SALA)



SCALA A)



Foto n° 12/43



INGRESSO
DA SCALA
A) DA
VIA SCHIANTABU
46.

X



Foto №13/43



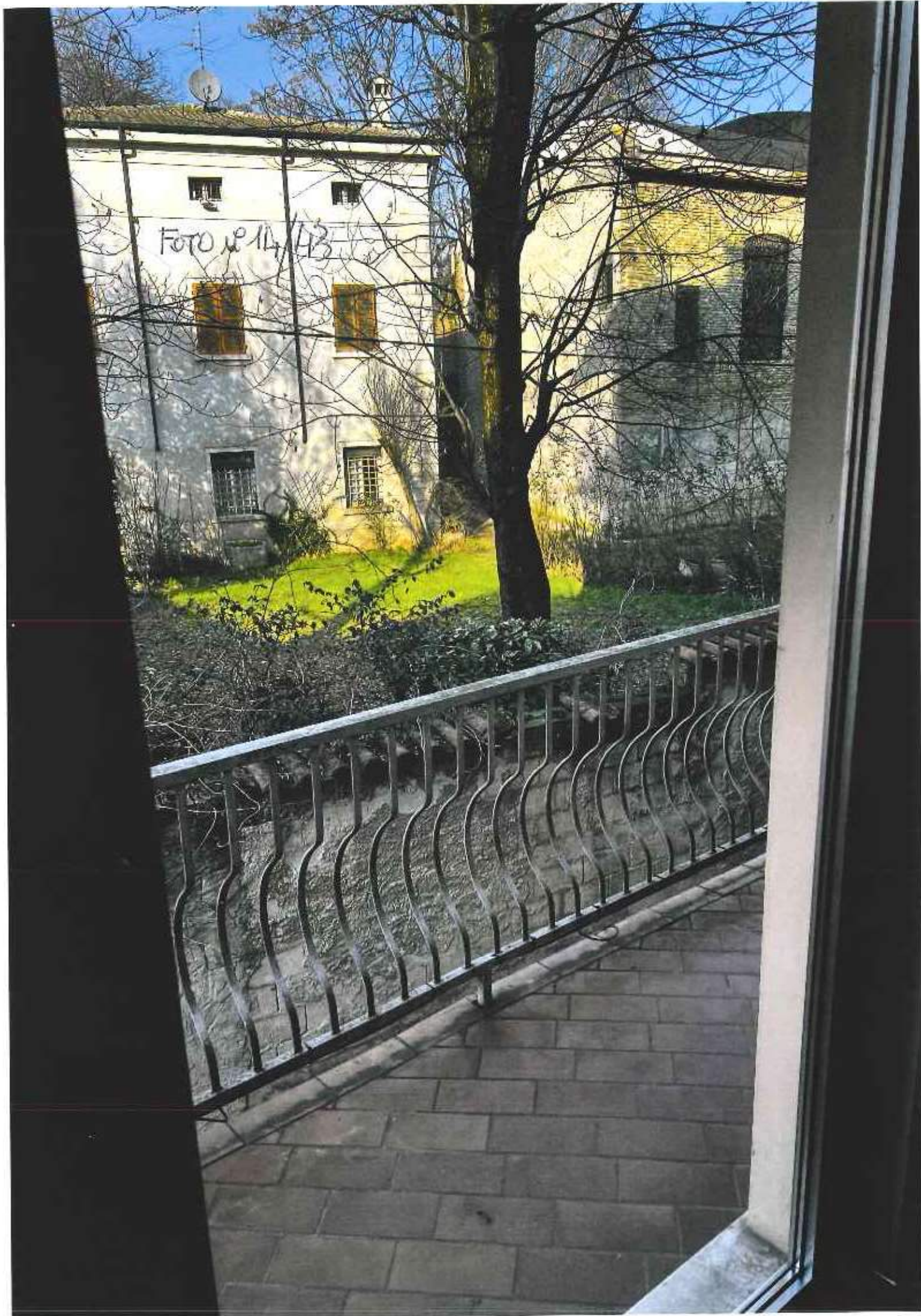


Foto n° 14/43

ФОТО №15/43



ФОТО №16/43



Foto n° 17/43





Foto nr 19/43





Foto 20/43

Foto 24/43



Foto n° 22/43



Фото № 23/43



FOTO n° 24/43



Foto. n° 25/43



Foto n° 26/43



Foto № 27/43



FOTO №28/43



FOTO n° 29/43

INGRESSO DA
SCALA B)

X



Фото № 30/43

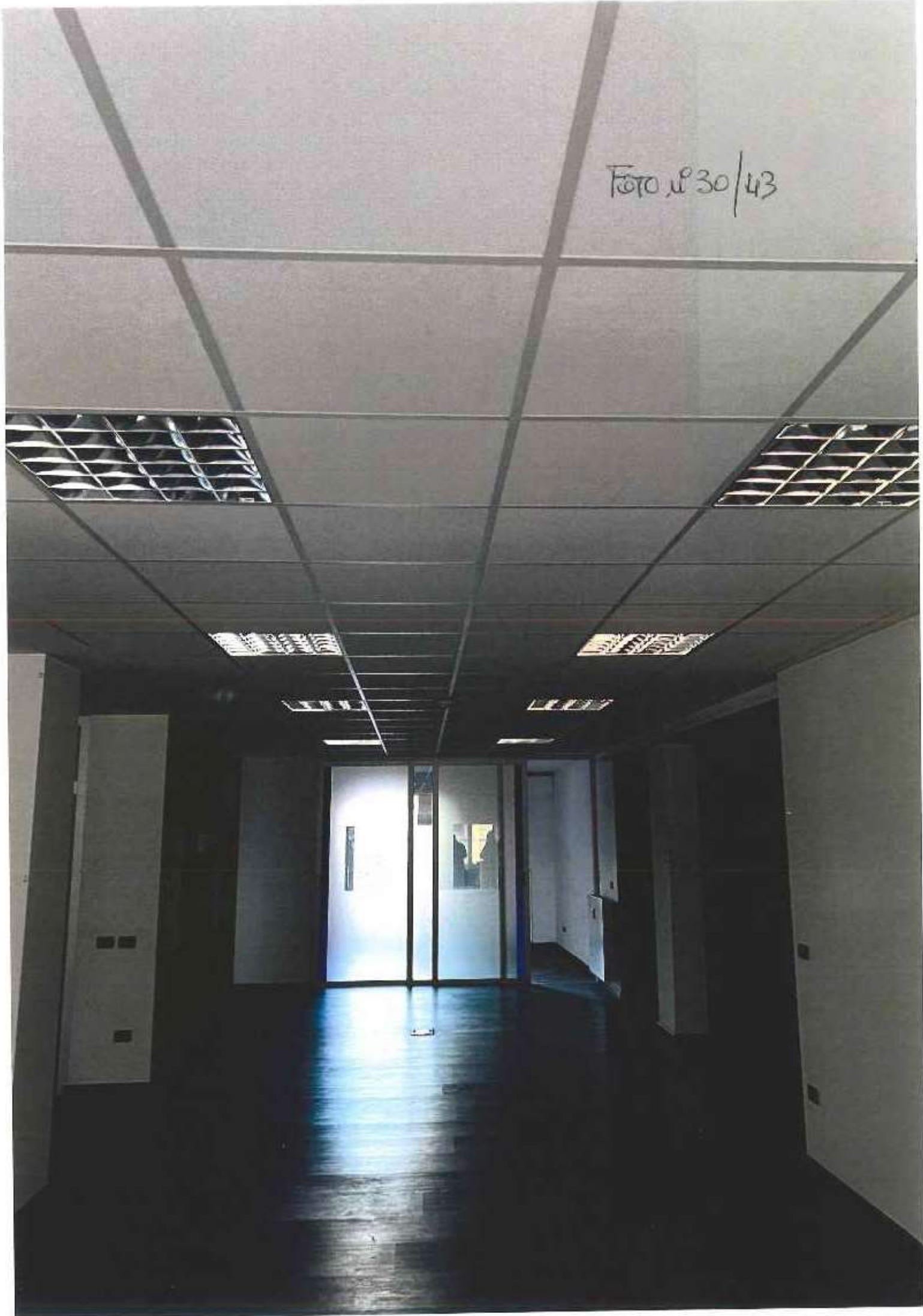


FOTO № 31/43



FOTO №32/43



Foto n° 33/43



Foto n° 34/43



ФОТО № 035/43



FOTO №36/43



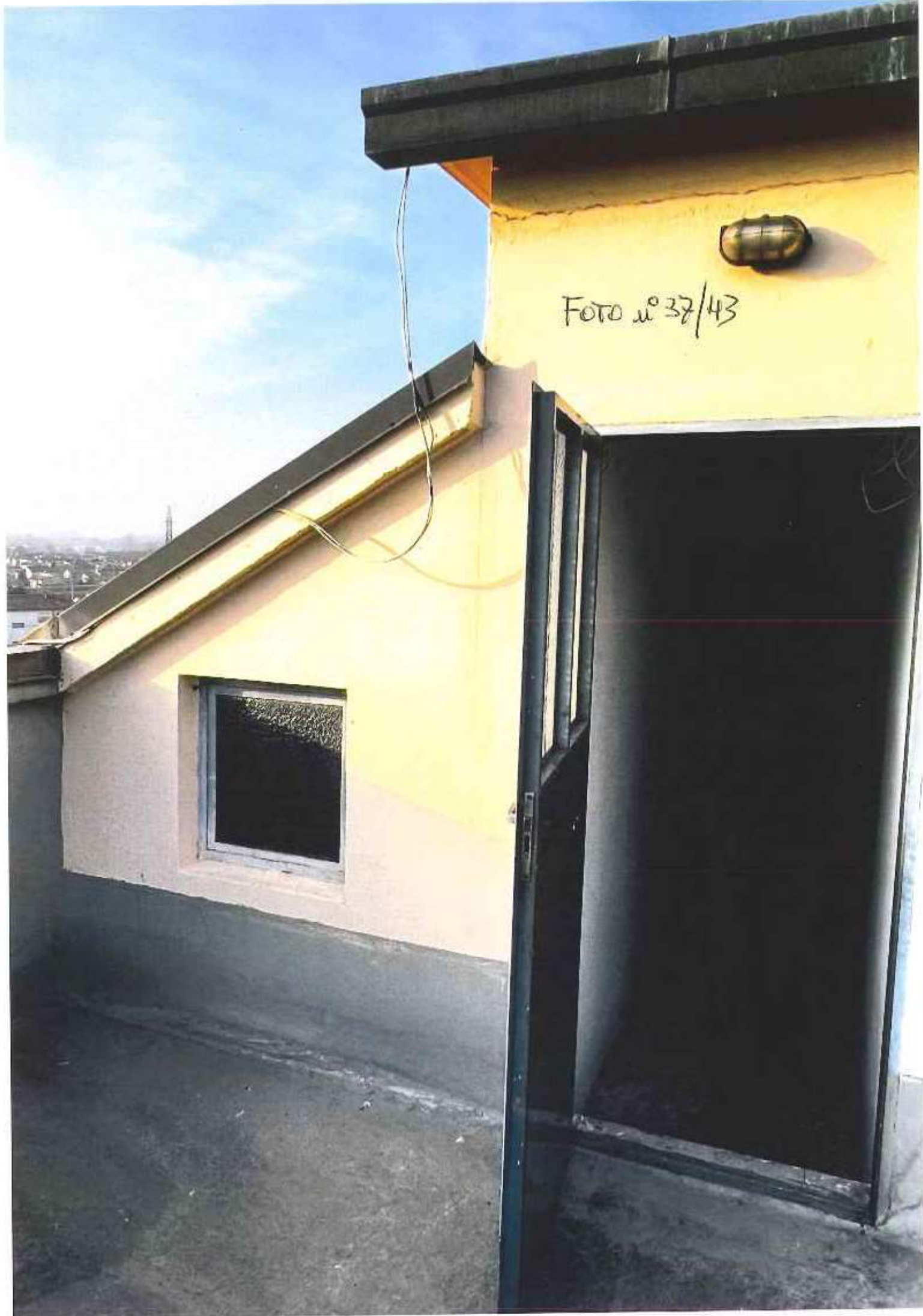


Foto n° 37/43

Foto n° 38/43

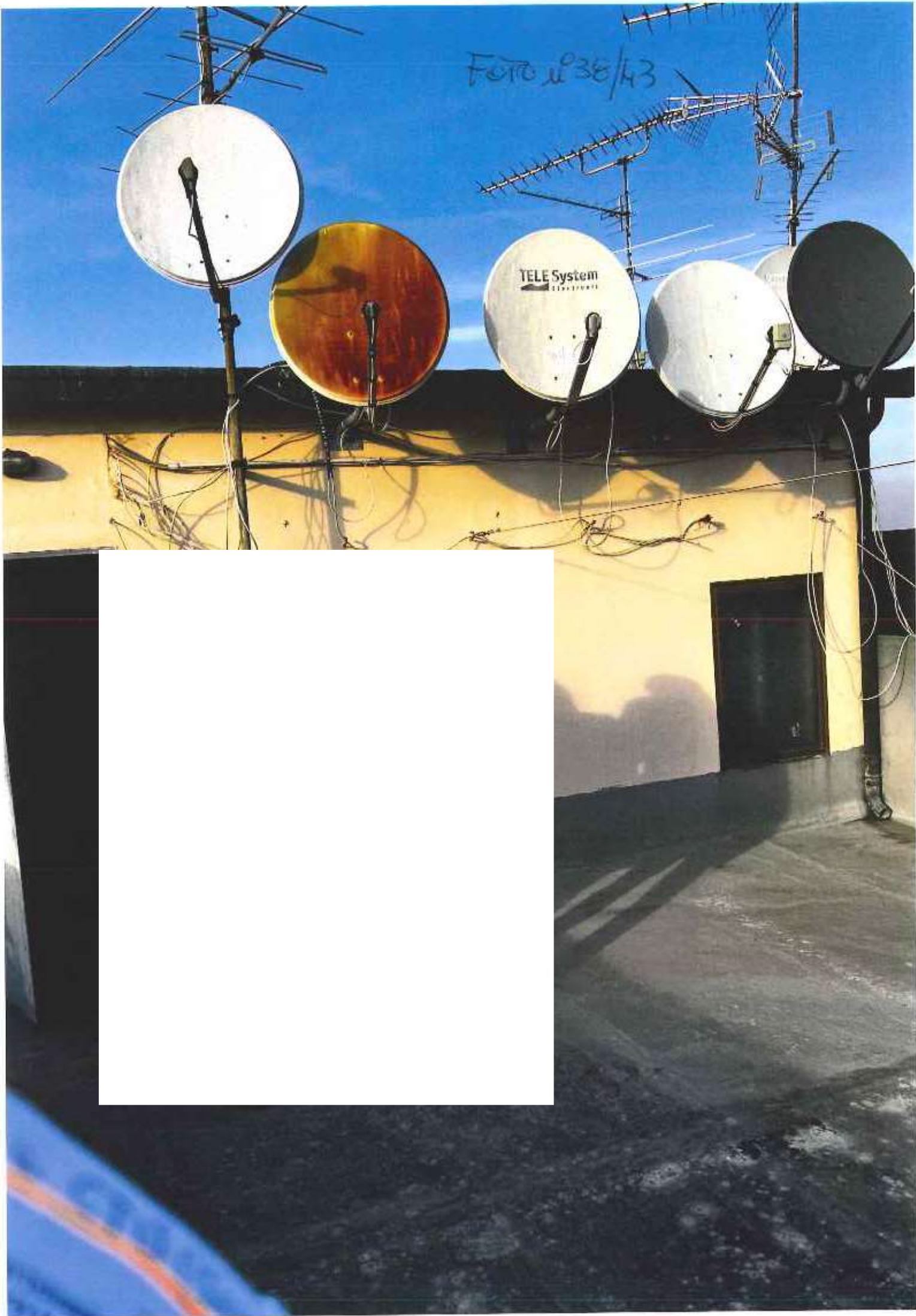


Foto n° 39/43



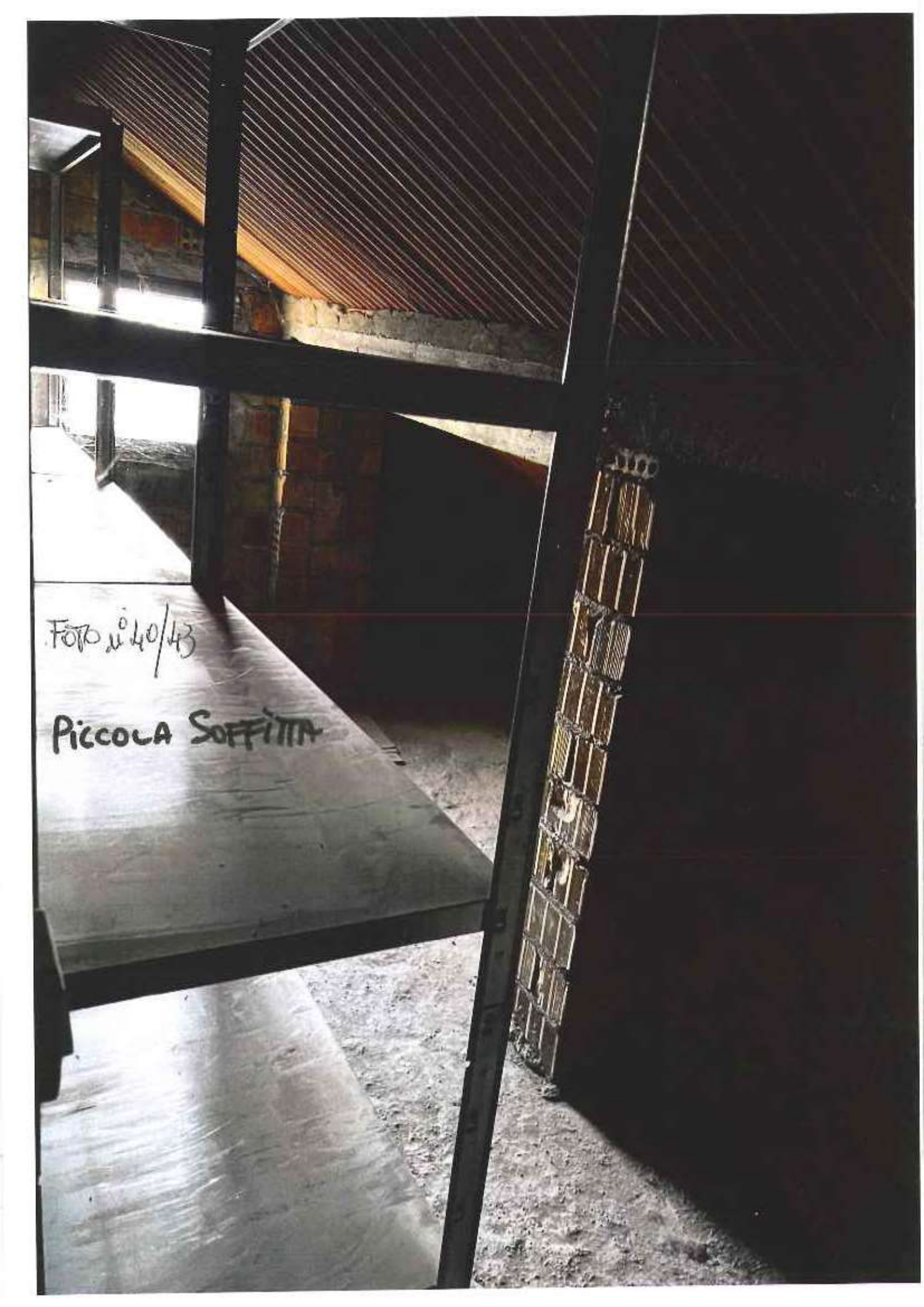


Foto n° 40/43

PICCOLA SOFFITTA



FOTO n° 41/43

GRANDE
CANTINA

FOTO 42/43



Foto n°43/43



CENTRALE TERMICA

-  È VIETATO FUMARE SULLA PRESA IN CARICA
IN VICINIA DI APPARECCHI A TENSIONE ELETTRICA O IN FLAMMA.
-  È VIETATO L'USO DI TORCE
E TUTTE LE FUMIGINE
NON AUTORIZZATE.
-  È VIETATO NON TENERE
L'ATTIVAZIONE MANI
SULLE MANIGLIE.