



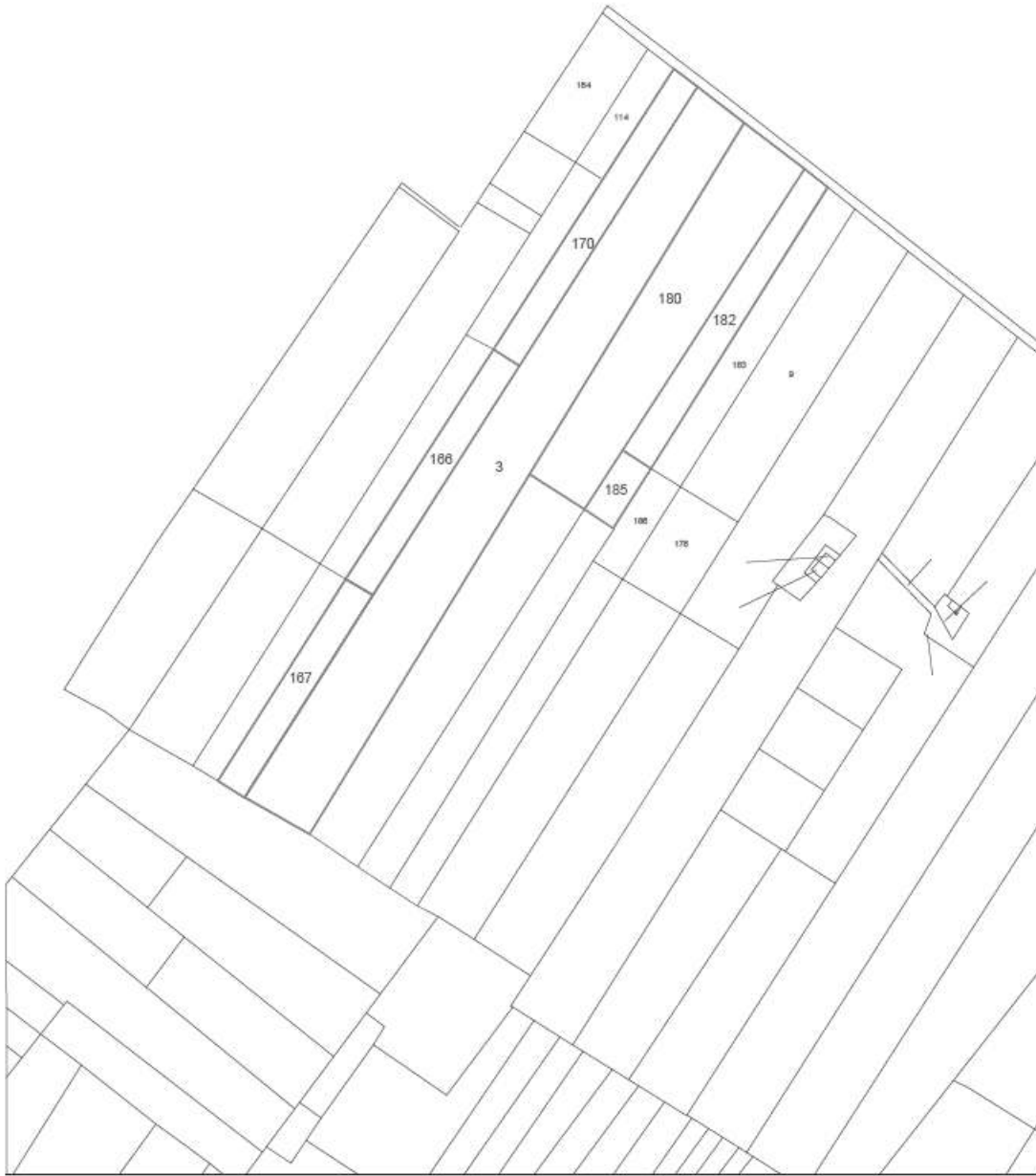
FOTO AEREA tratta da Google Earth con individuazione del LOTTO UNICO





FOTO aerea tratta dal sito MAPPE CATASTO con individuazione delle particelle





STRALCIO FOGLIO DI MAPPA 341

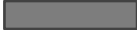




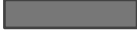




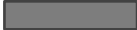

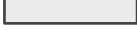

FOTO aerea tratta dal sito MAPPE CATASTO con individuazione delle particelle e dei beni immobili



Legenda

	Serra (m 10,00 x 35,00) x n.14 =	mq. 4.900,00
	Serra (m 10,00x42,50) x n.20 =	mq. 8.500,00
	Serra (m 8,00x38,00)x n. 12 =	mq. 3.648,00
	Serra (8,00x50,00) x 24 =	mq. 9.600,00
	Magazzini Avanserra A – B – C (mq. 120,00+120,00+320,00) =	mq. 560,00
	Magazzino in muratura =	mq. 16,00

Colture

	Serra coltivata a Cycas
	Serra coltivata a meloni gialli
	Serra coltivata a meloni gialli
	Serra coltivata a Cycas





1 – Accesso principale all’Azienda Agricola



2 – Accesso principale all’Azienda Agricola





3 – Accesso secondario all’Azienda Agricola





4 – Serra (m 10,00 x 35,00) x n.14 = mq. 4.900 Cycas in vaso

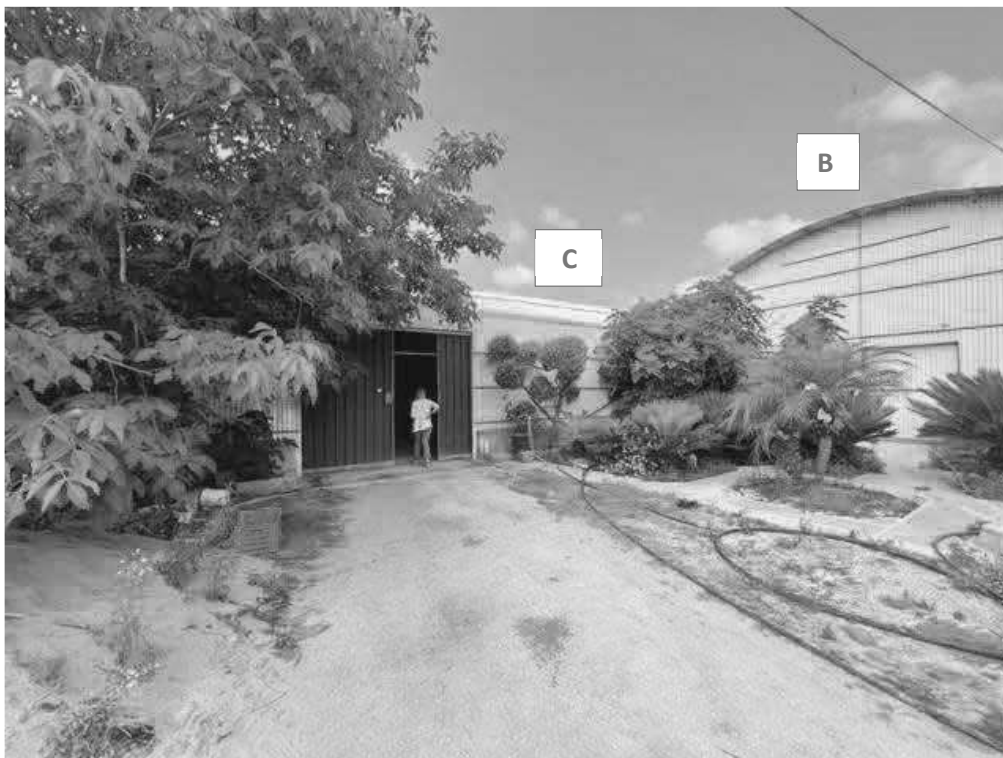


5 – Serra (8,00x50,00) x 24 = mq.9.600 Cycas





9 – Magazzini Avanserra A- B –C – pozzo d’acqua viva



10 – Magazzini Avanserra B –C





13 – Magazzino Avanserra A locale 1



14 – Magazzino Avanserra A locale 2





3

15 – Magazzini Avanserra A – B locale 3



16 – Magazzino Avanserra B locale 4





17 – Magazzino Avanserra B locale 5



18 – Magazzino Avanserra B locale 5





19 – Magazzino Avanserra B locale 6

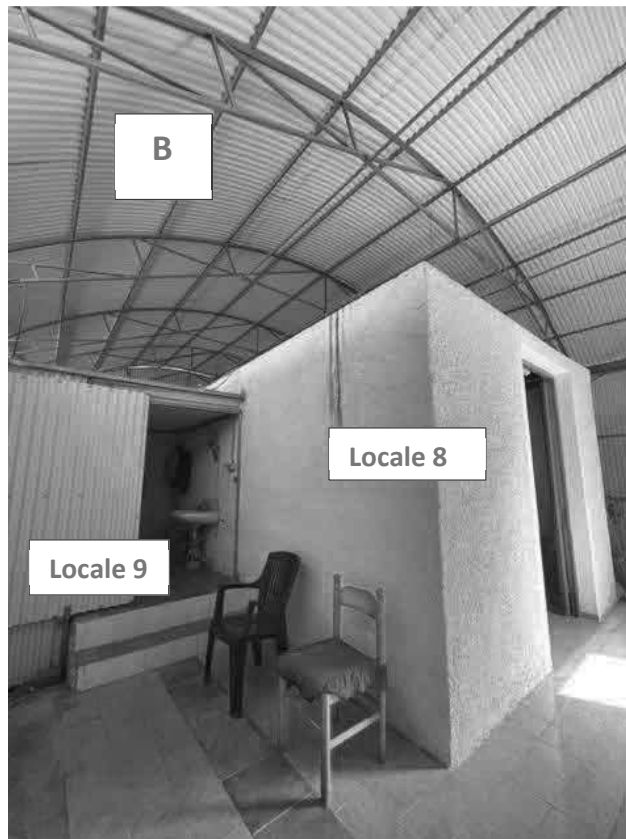


20 – Magazzino Avanserra B locale 8



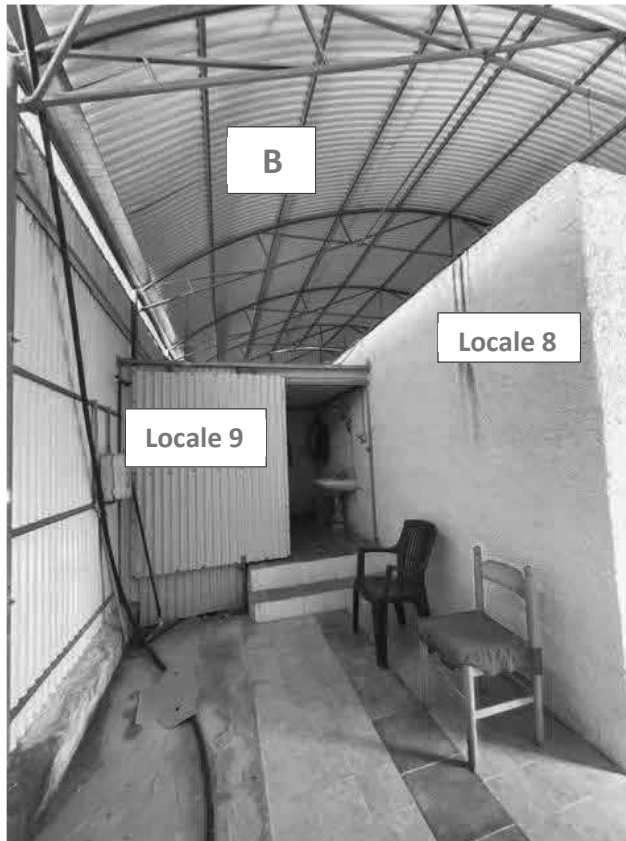


21 – Magazzino Avanserra B locale 8



22 – Magazzino Avanserra B locale 9-8-7





23 – Magazzino Avanserra B locale 9-8



24 – Magazzino Avanserra B locale 7





25 – Magazzino Avanserra B locale 7 -3 - 4





26 – Magazzino Avanserra C



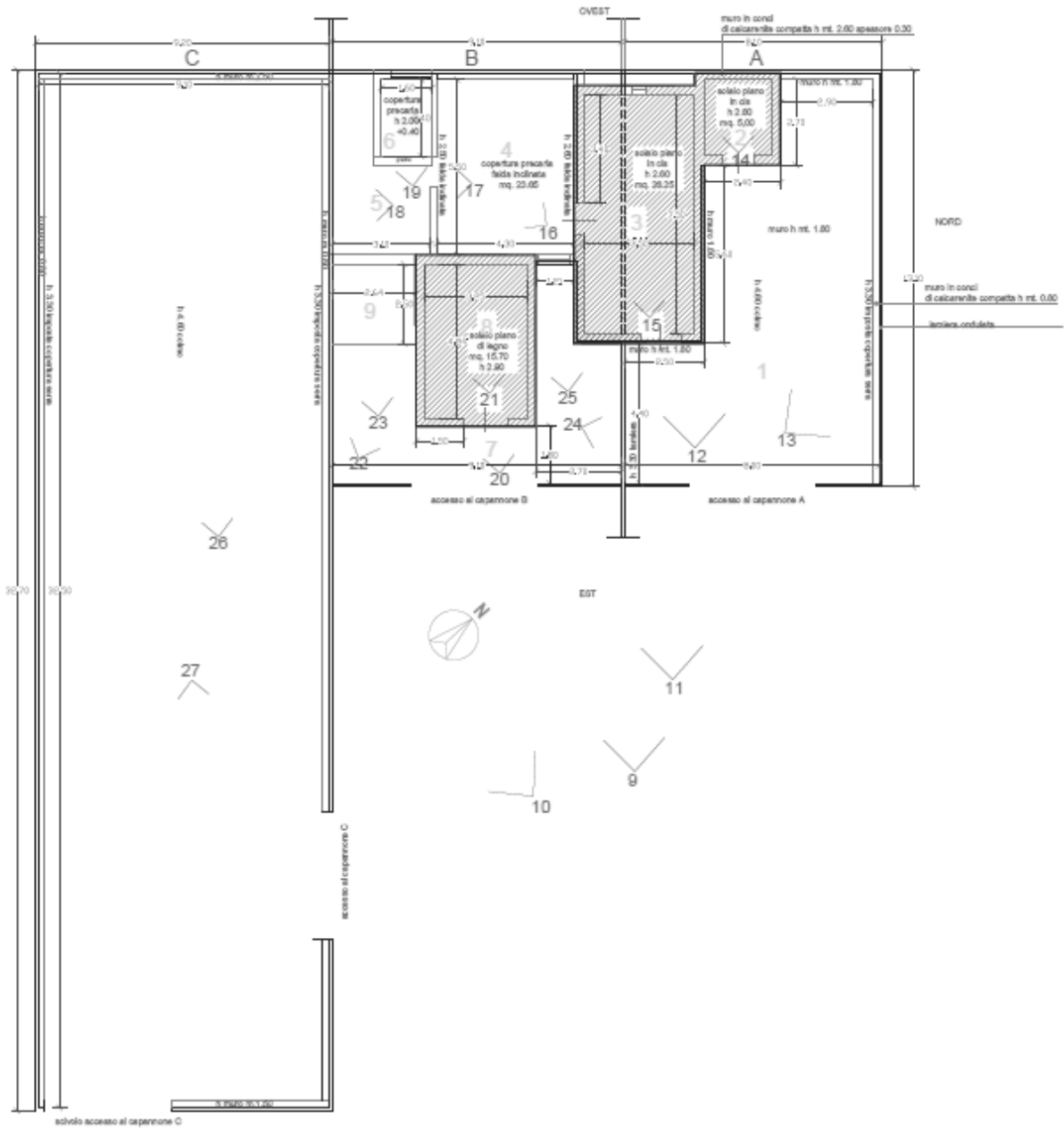
27 – Magazzino Avanserra C





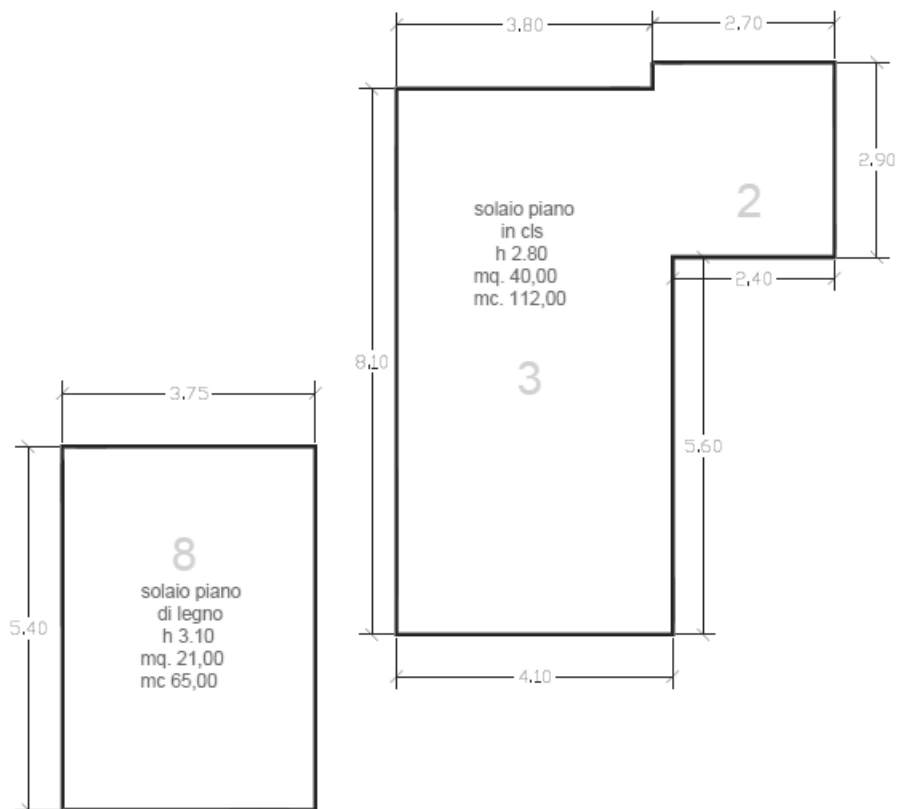
28 – Magazzino Avanserra C





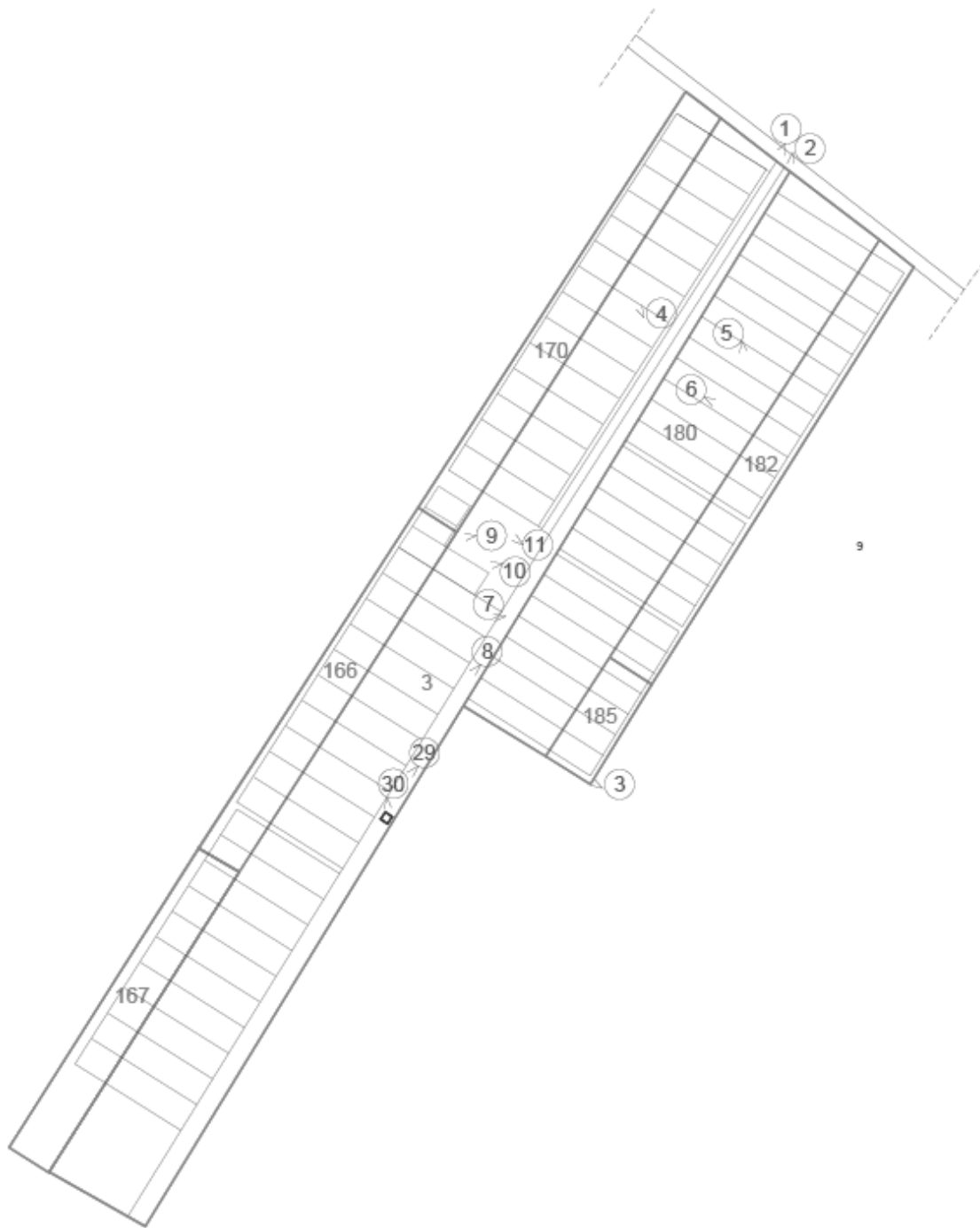
Planimetria con coni ottici Magazzini avanserra A – B- C





Calcolo volume opere abusive interne ai Magazzini avanserra A – B- C

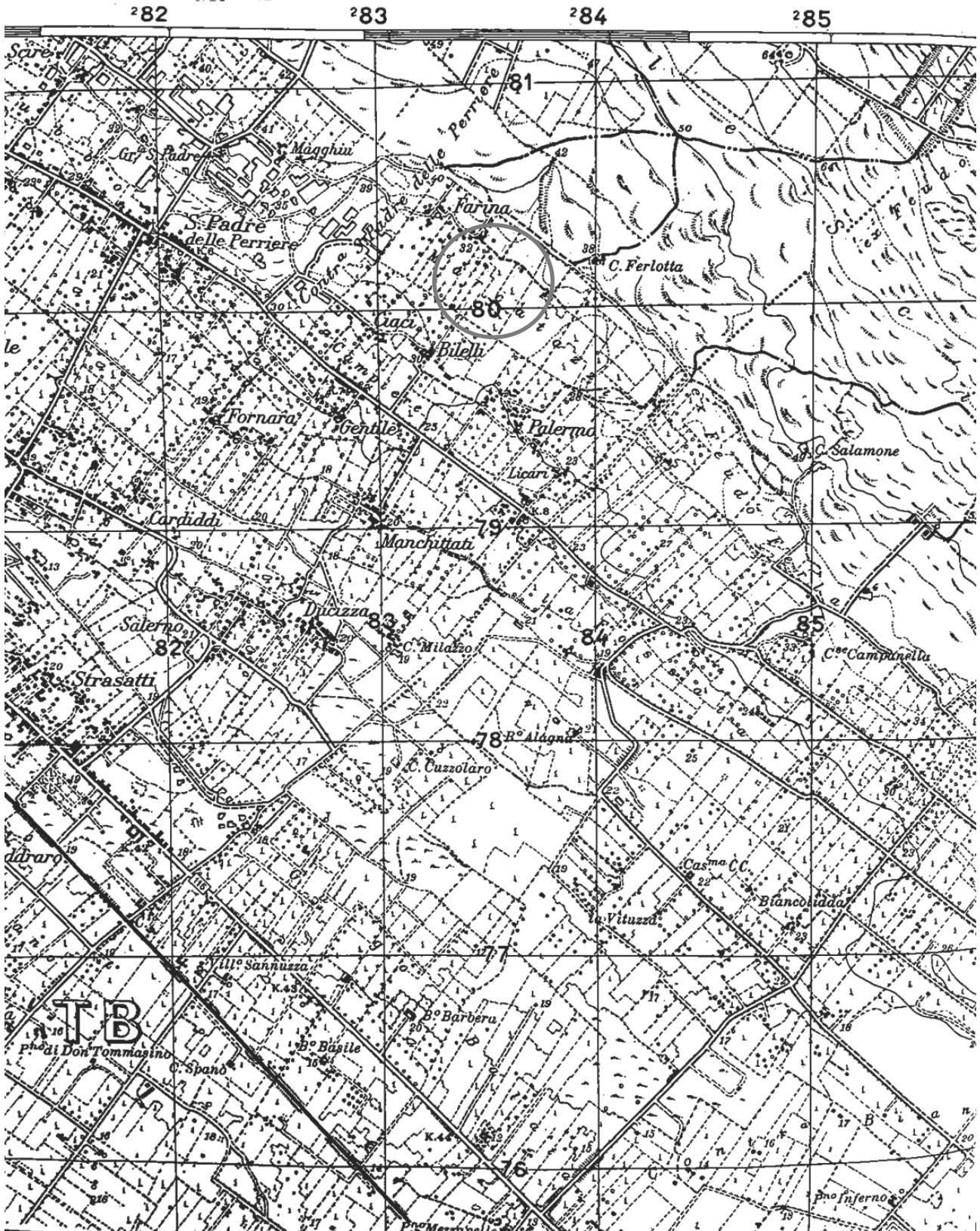




Planimetria con coni ottici

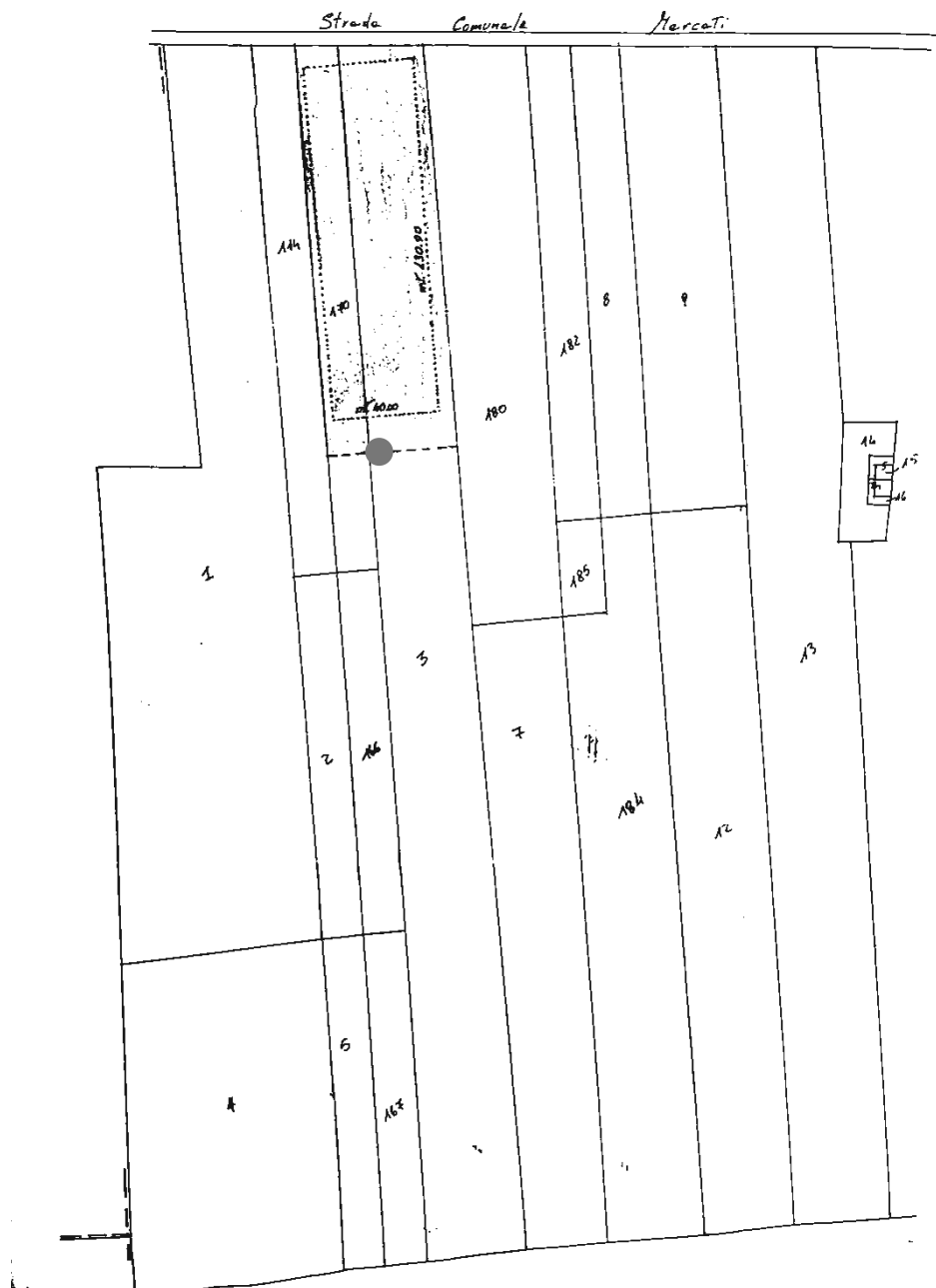
LOTTO UNICO particelle – serre





I.G.M. Ubicazione del lotto





Ubicazione del pozzo ●





Immagine tratta dal Portale SITR Regione Siciliana – Area non soggetta a vincoli

