

# ALLEGATO N.07

## PLANIMETRIE SANATORIA E RILIEVO

- PLANIMETRIA LOTTO SANATORIA
- PIANTA SANATORIA SUPERFICI E VOLUMI LORDI
- PIANTA SANATORIA SUPERFICI NETTE
- PROSPETTI E SEZIONI SANATORIA ABITAZIONE
- PROSPETTI E SEZIONI CANTINA
- PLANIMETRIA LOTTO RILIEVO
- PIANTA RILIEVO SUPERFICI E VOLUMI LORDI
- PIANTA RILIEVO SUPERFICI NETTE
- PROSPETTI E SEZIONI RILIEVO
- SOVRAPPOSIZIONI



# PLANIMETRIA DA SANATORIA (2004)

## E CATASTALE (2008)

FG. n. 81 part. n. 1503 sub1-2



Abitazione



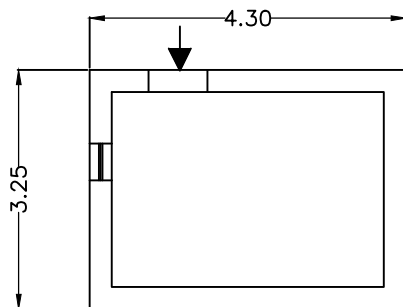
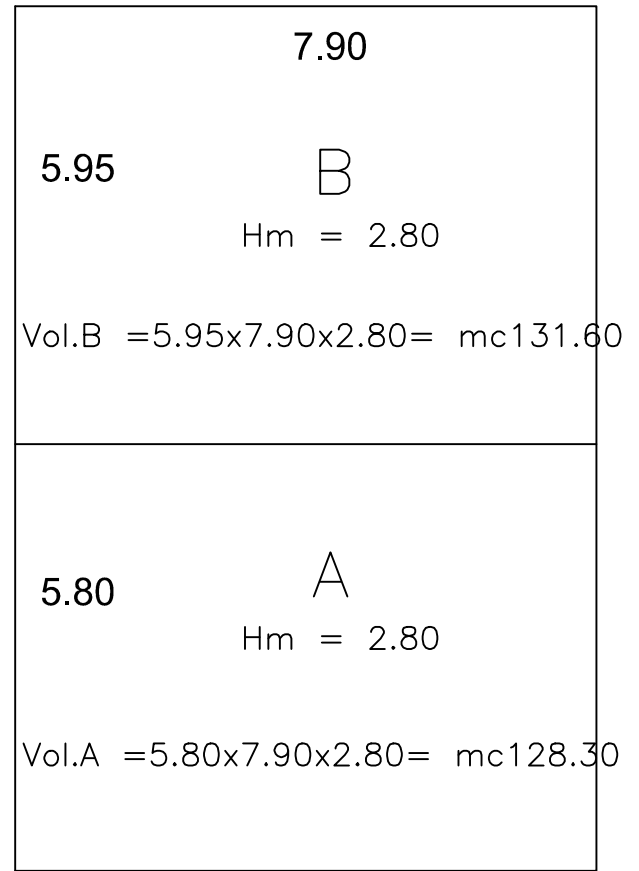
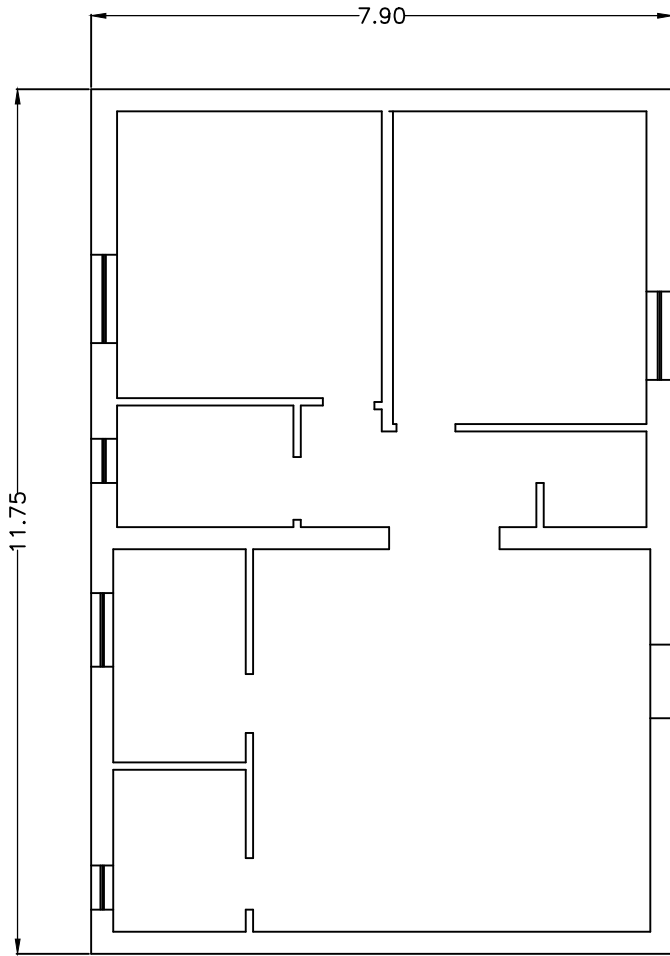
Cantina



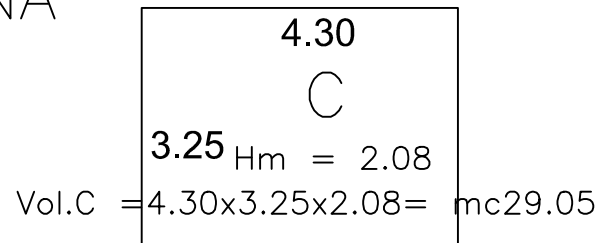
Via degli Sparvieri 15/A



# SANATORIA – SUPERFICI E VOLUMI LORDI ABITAZIONE



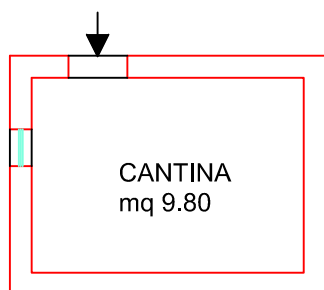
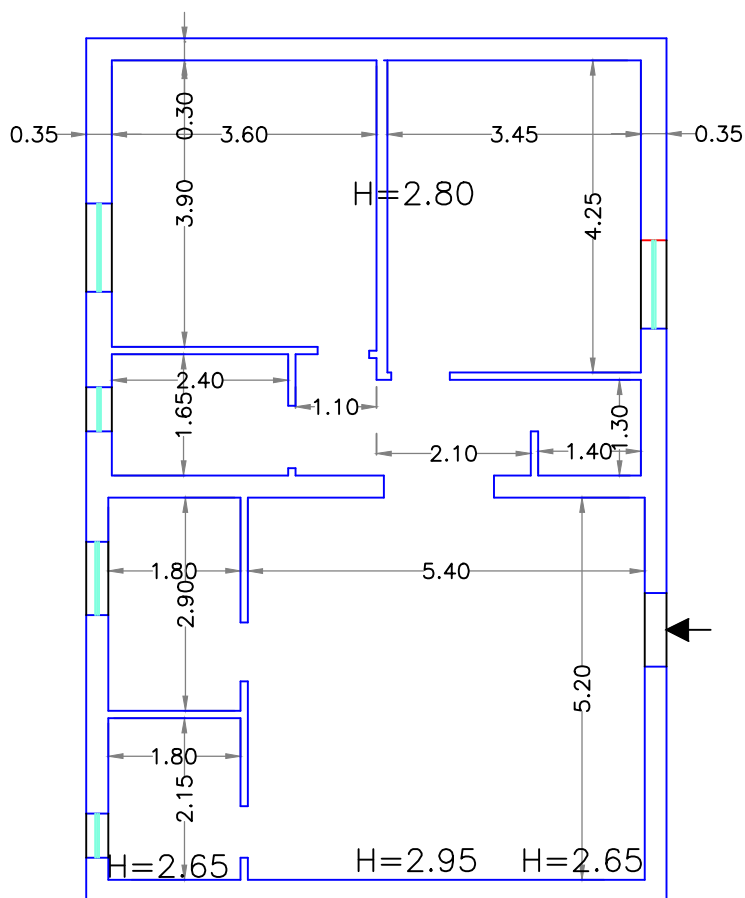
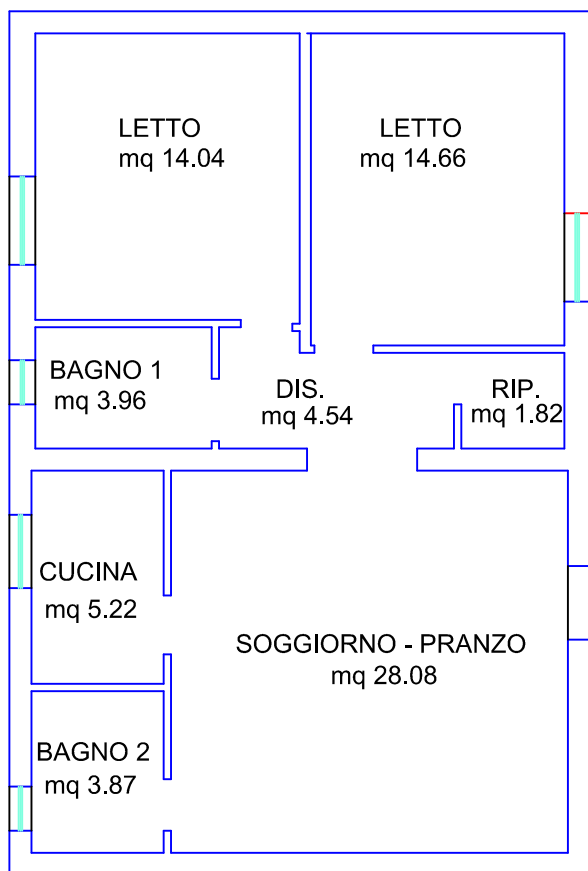
CANTINA



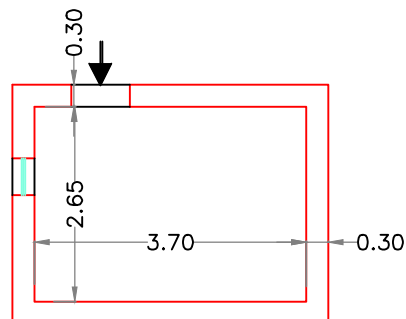
## SUPERFICI E VOLUMI LORDI

	S.L.A mq	S.LN.R. mq	mq x 60%	mq x 2%	mq x 4%	Volume mc
A	45.80					128.30
B	47.00					131.60
TOTALE	92.80					259.90
C		13.95	8.37			29.05
TOTALE		13.95	8.37			29.05
CORTE	600.00			12.00		
LASTRICO	300.00				24.00	

# SANATORIA – SUPERFICI NETTE ABITAZIONE



CANTINA

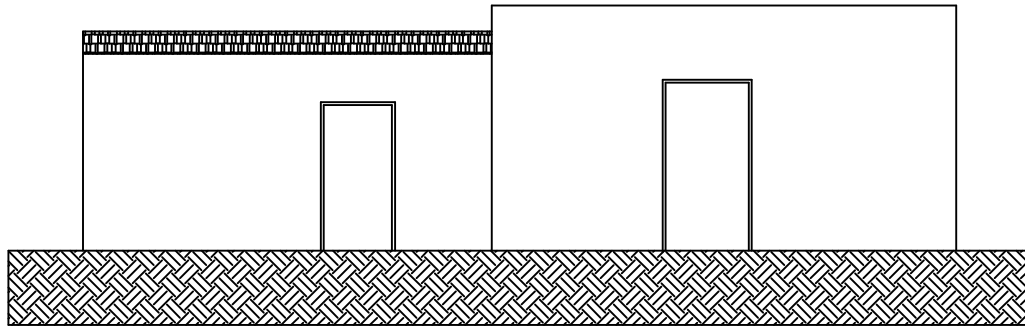


## SUPERFICI NETTE

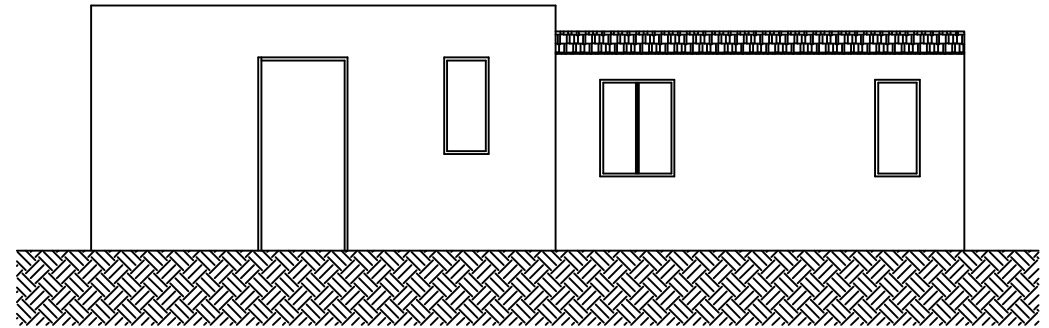
DEST. USO	S.U.A mq	S.N.R. mq	S.N.R. 60% mq
LETTO	14.04		
LETTO	14.66		
BAGNO 1	3.96		
DIS.	4.54		
RIP.	1.82		
CUCINA	5.22		
SOGG. - PRANZO	28.08		
BAGNO 2	3.87		
TOTALE	76.36		
CANTINA		9.80	5.88
TOTALE		9.80	5.88

# PROSPETTI – SEZIONI SANATORIA ABITAZIONE

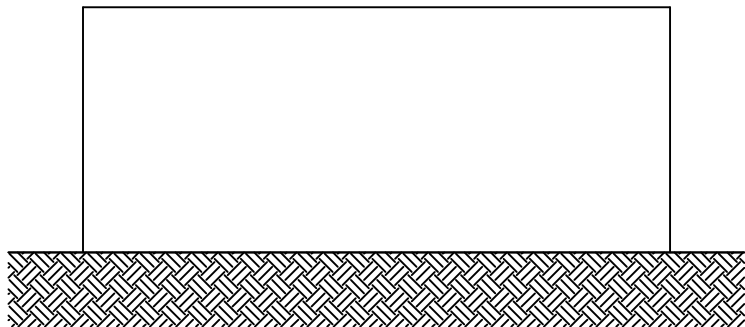
## PROSPETTO "A"



## PROSPETTO "B"



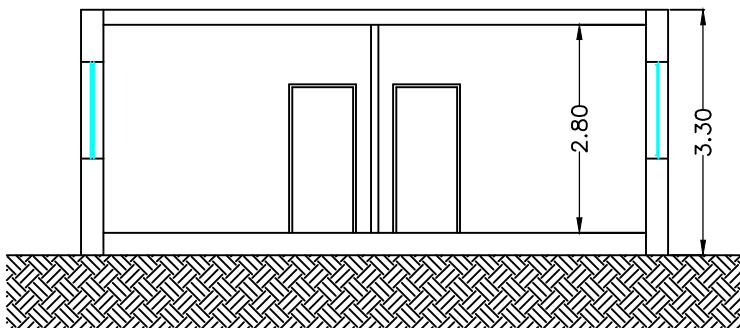
## PROSPETTO "D"



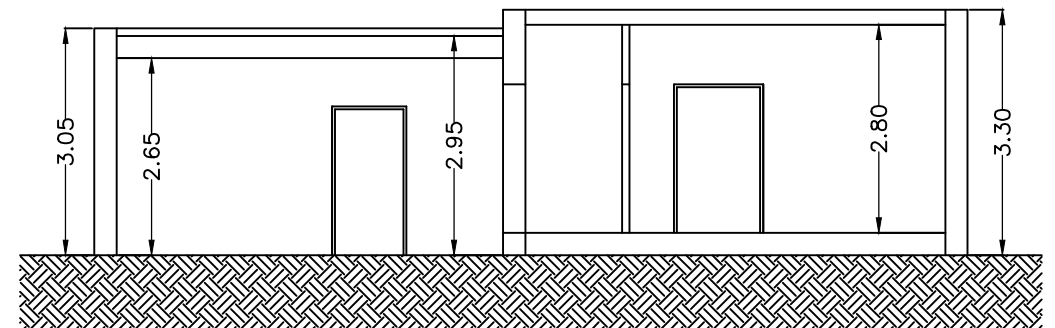
## PROSPETTO "C"



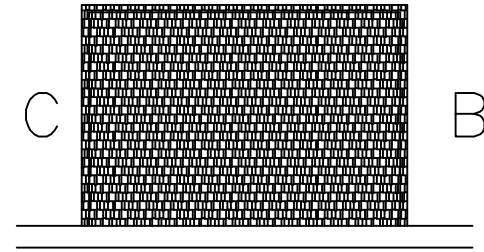
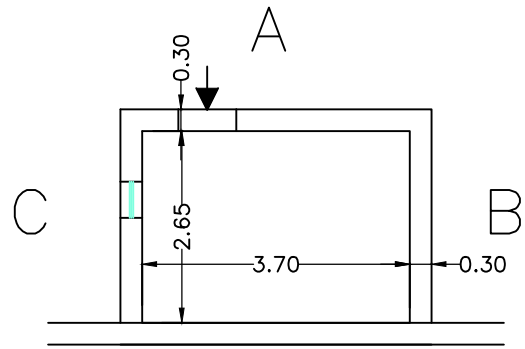
## SEZIONE Y-Y



## SEZIONE X-X



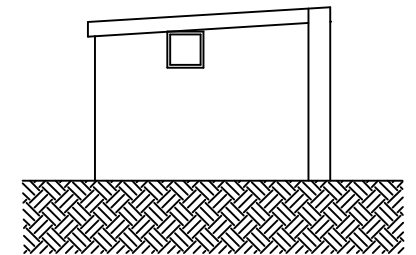
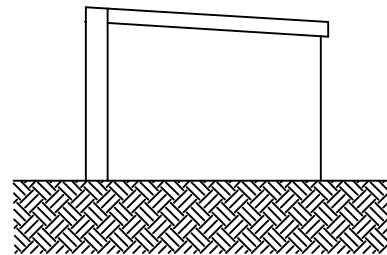
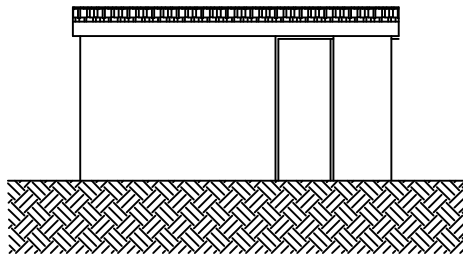
# PROSPETTI – SEZIONI – CANTINA



PROSPETTO "A"

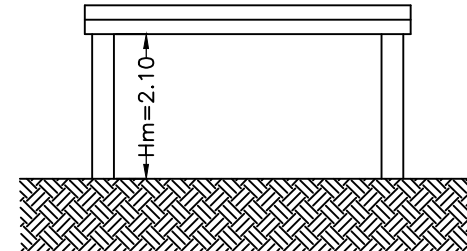
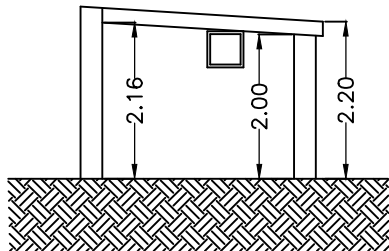
PROSPETTO "B"

PROSPETTO "C"

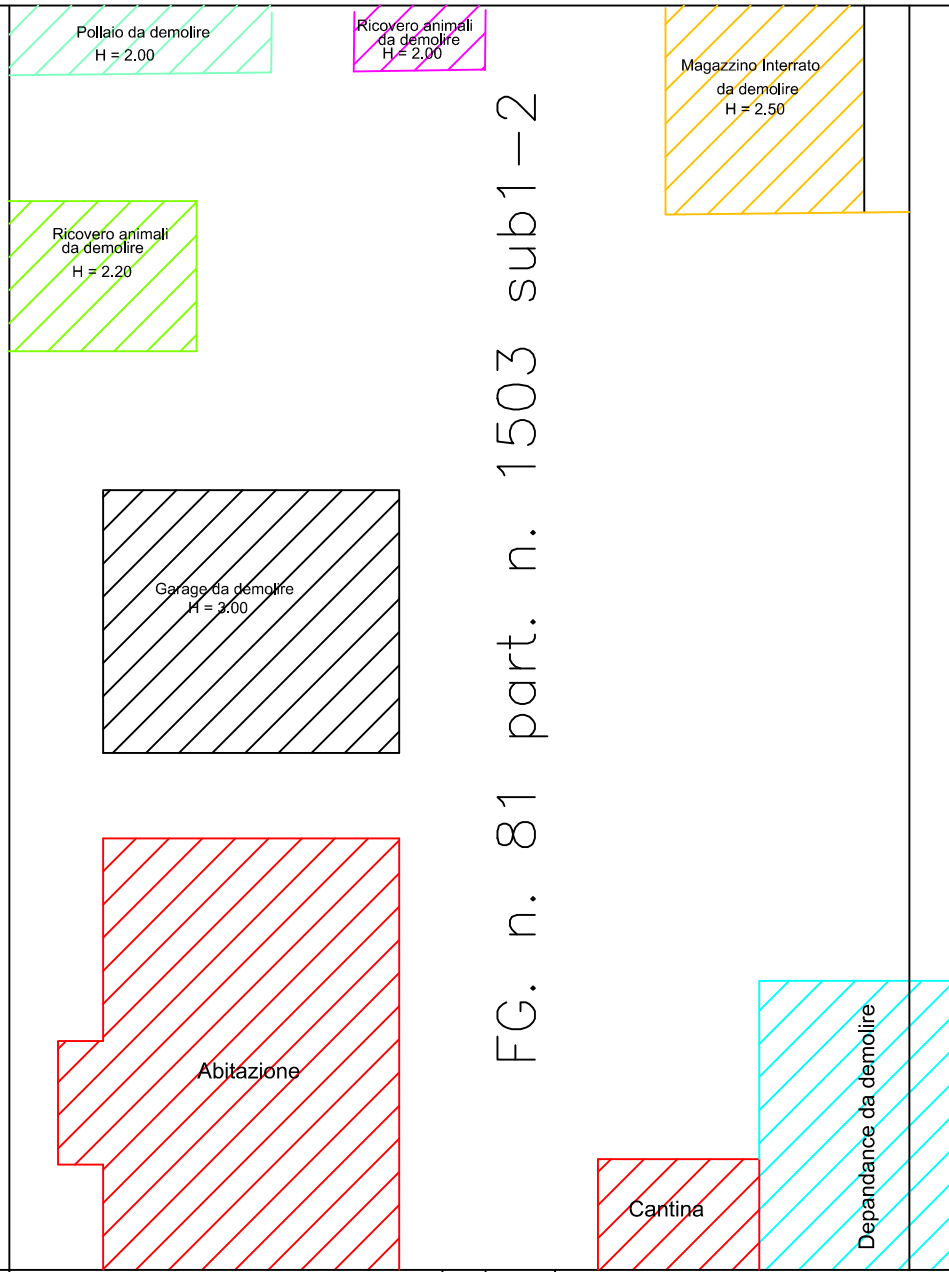


SEZIONE TRASVERSALE

SEZIONE LONGITUDINALE



# PLANIMETRIA DA RILIEVO (2023)



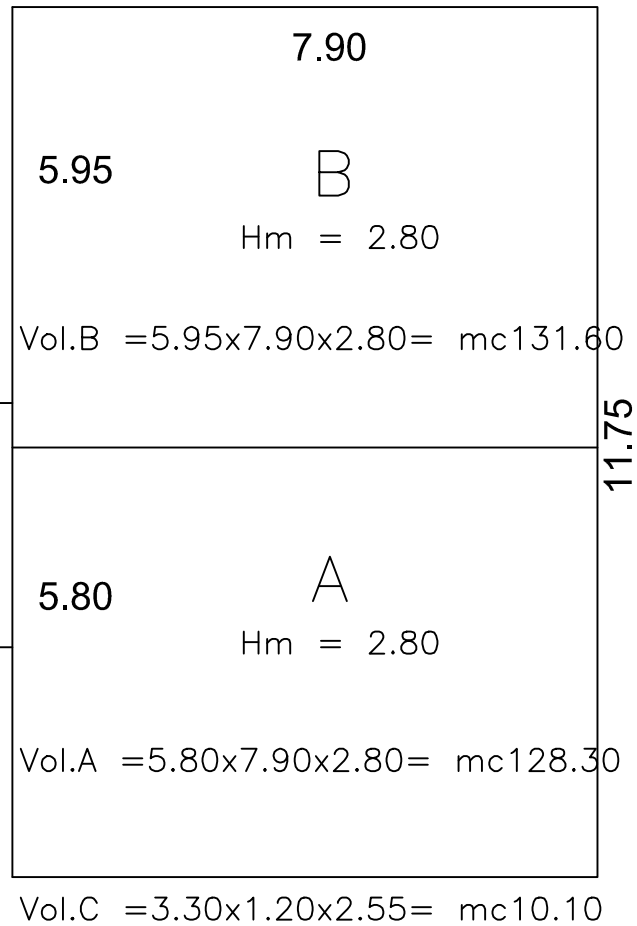
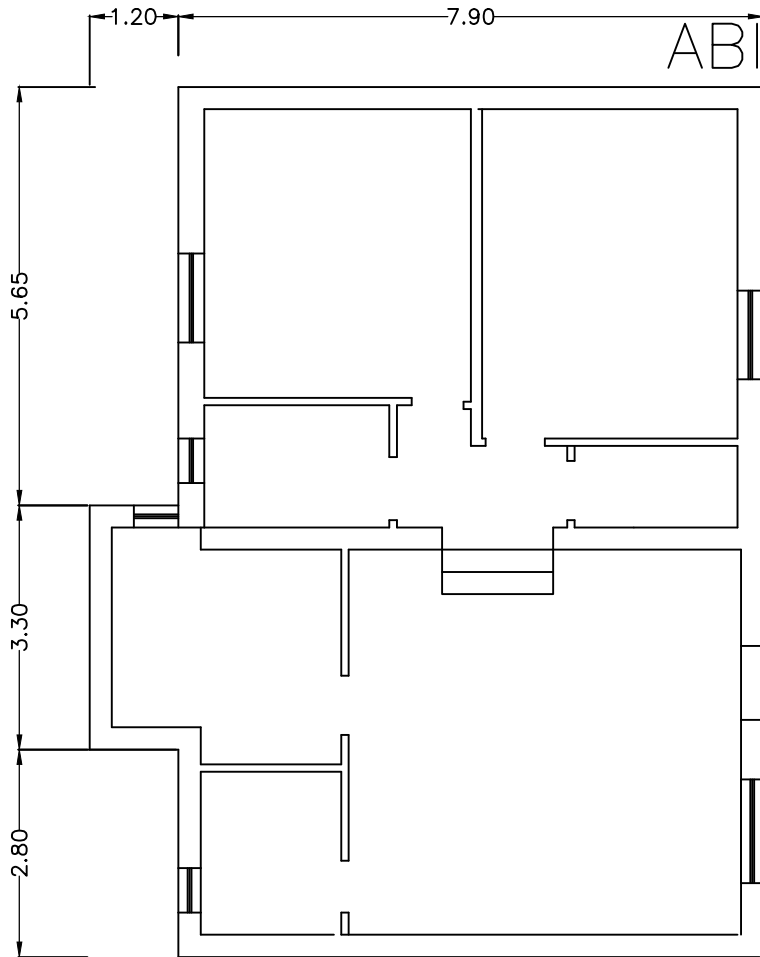
Via degli Sparvieri 15/A

FG. n. 81 part. n. 1503 sub1-2

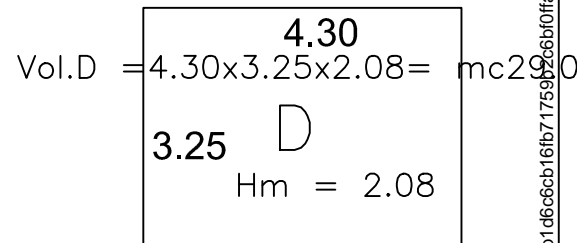
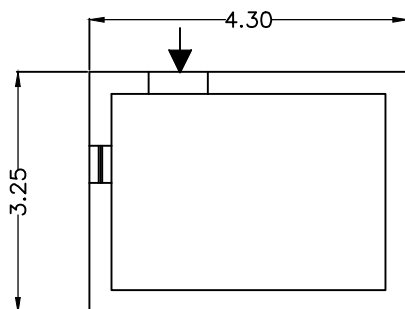


# RILIEVO – SUPERFICI E VOLUMI LORDI

## ABITAZIONE



## CANTINA

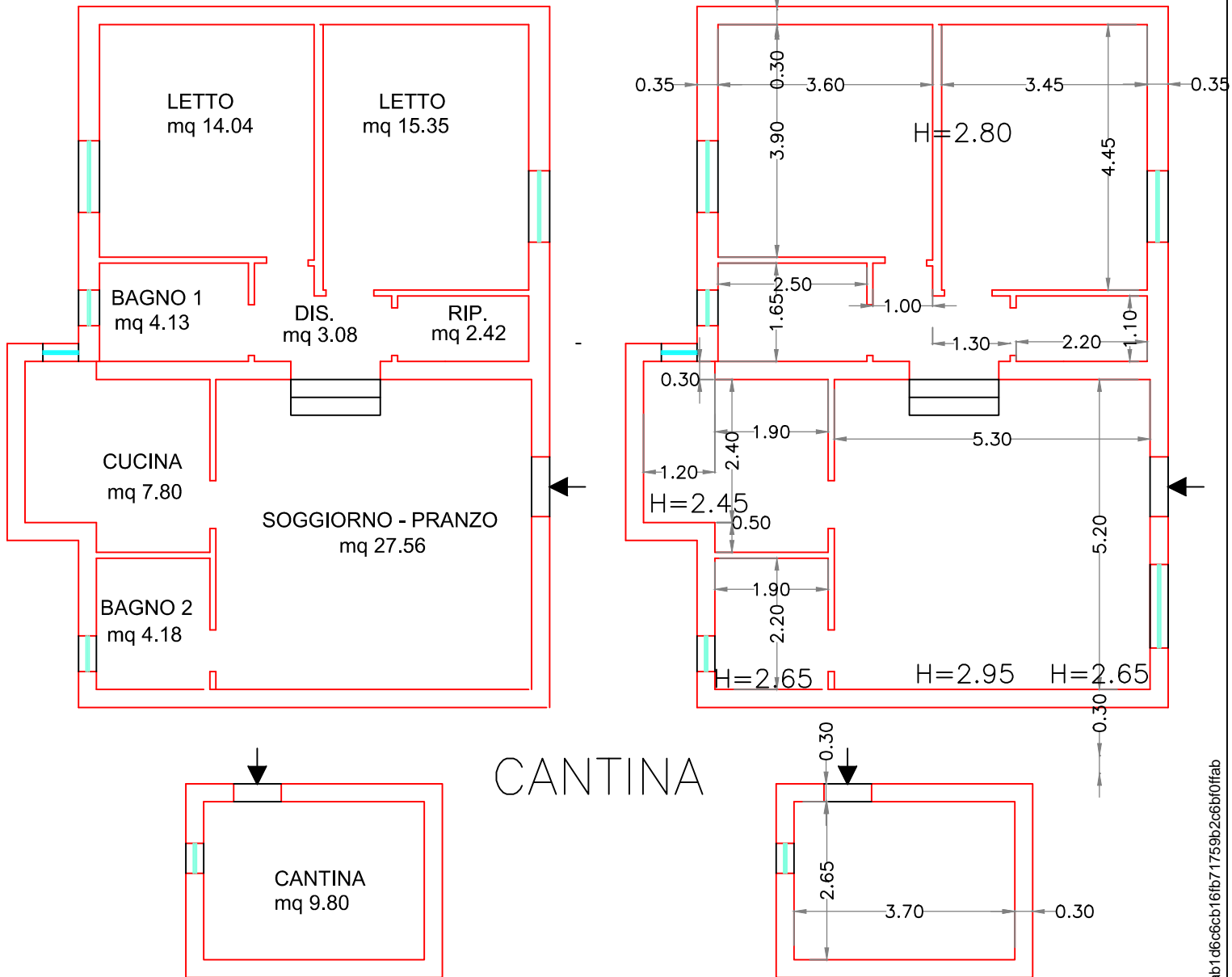


## SUPERFICI E VOLUMI LORDI

	S.L.A mq	S.LN.R. mq	mq x 60%	mq x 2%	mq x 4%	Volume mc
A	45.80					128.30
B	47.00					131.60
C	3.96					10.10
TOTALE	96.76					270.00
D		13.95	8.37			29.05
TOTALE		13.95	8.37			29.05
CORTE	600.00			12.00		
LASTRICO	300.00				24.00	



# RILIEVO – SUPERFICI NETTE ABITAZIONE

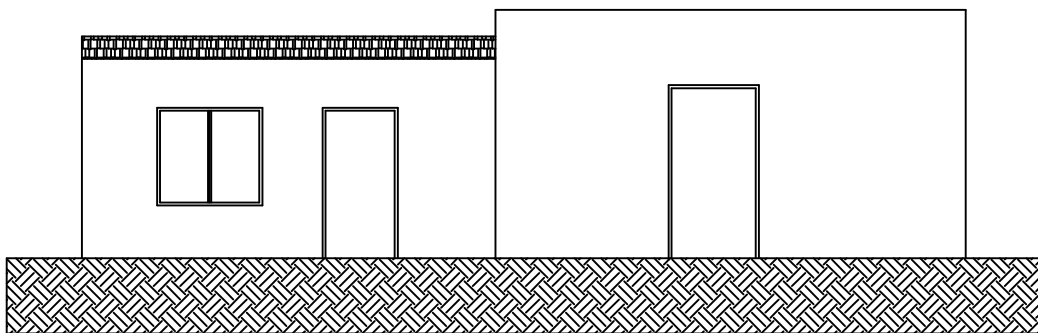


## SUPERFICI NETTE

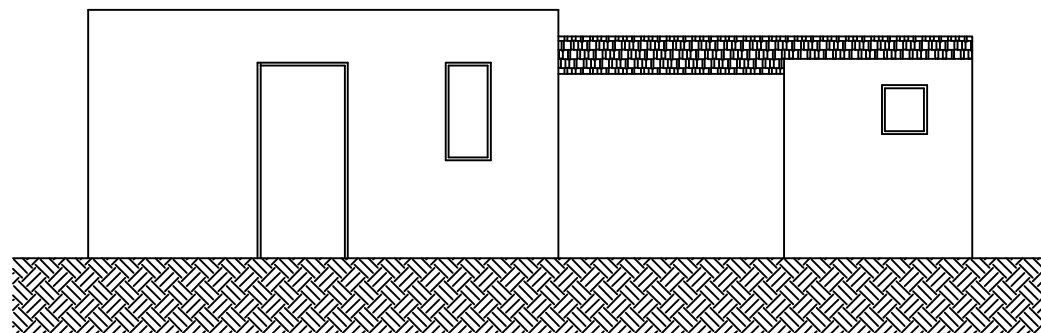
DEST. USO	S.U.A mq	S.N.R. mq	S.N.R. 60% mq
LETTO	14.04		
LETTO	15.35		
BAGNO 1	4.13		
DIS.	3.08		
RIP.	2.42		
CUCINA	7.80		
SOGG. - PRANZO	27.56		
BAGNO 2	4.18		
TOTALE	78.56		
CANTINA		9.80	5.88
TOTALE		9.80	5.88

# PROSPETTI – SEZIONI RILIEVO ABITAZIONE

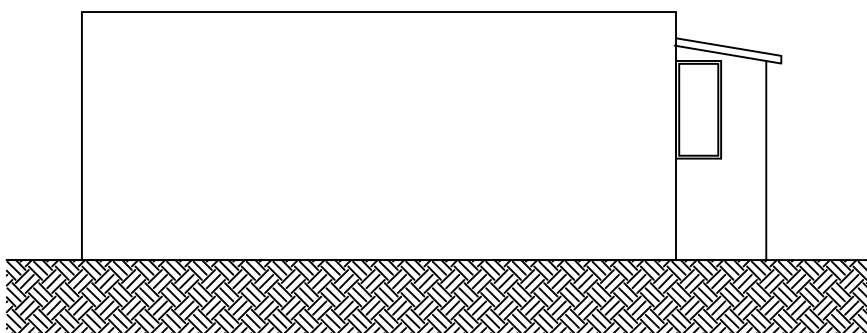
## PROSPETTO "A"



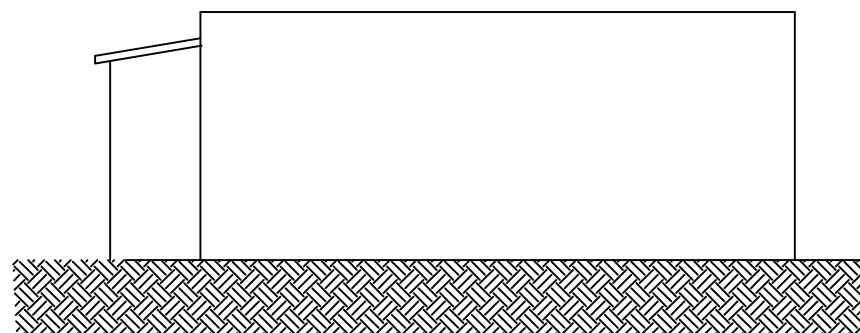
## PROSPETTO "B"



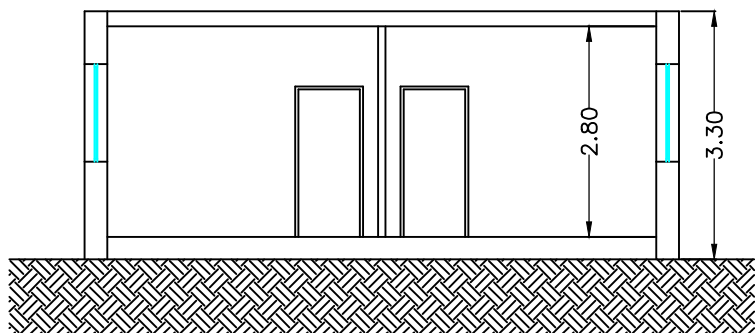
## PROSPETTO "D"



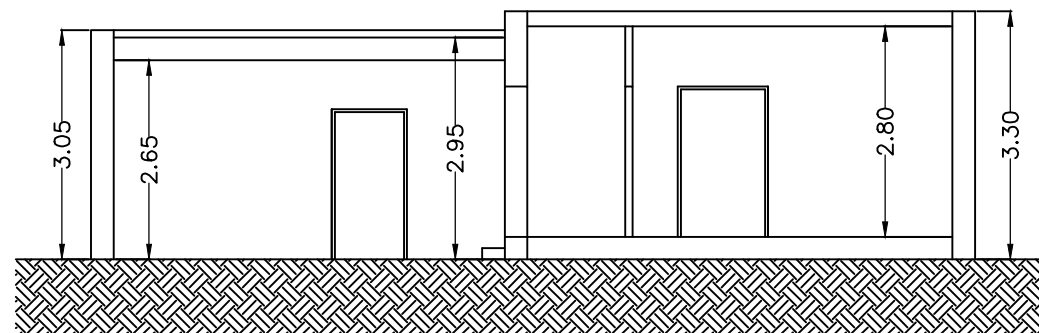
## PROSPETTO "C"



## SEZIONE Y-Y



## SEZIONE X-X



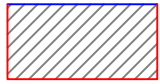
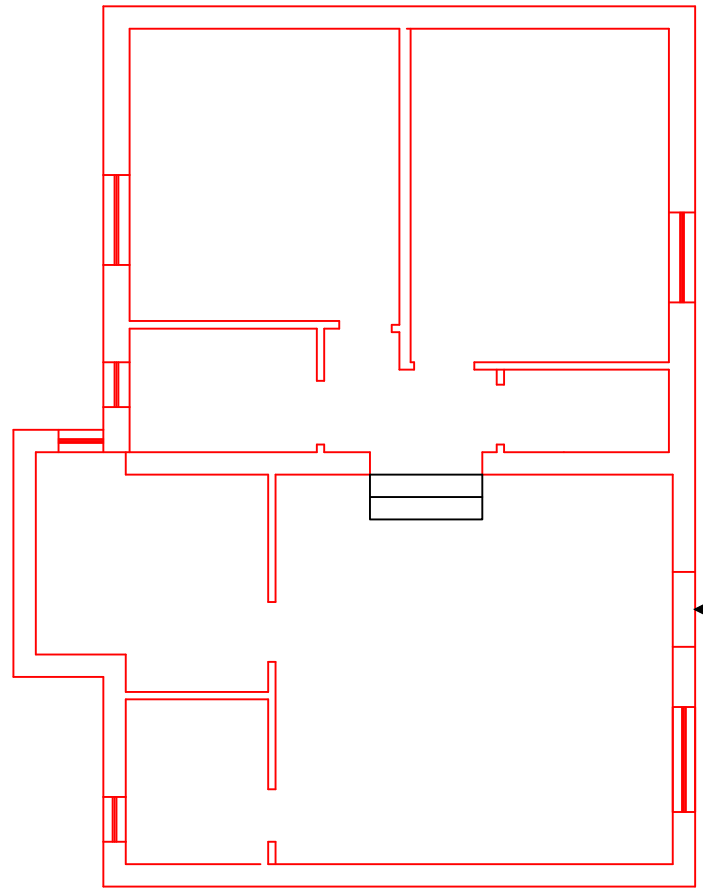
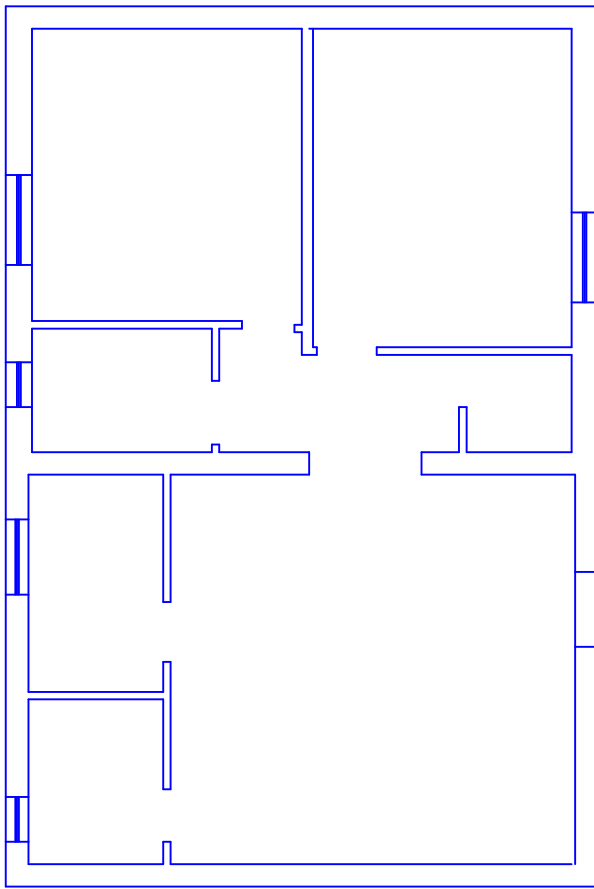
# SOVRAPPOSIZIONI



SANATORIA



RILIEVO



PARTE DA DEMOLIRE  $3.30 \times 1.20 \times 2.55 = MC 10.10$

