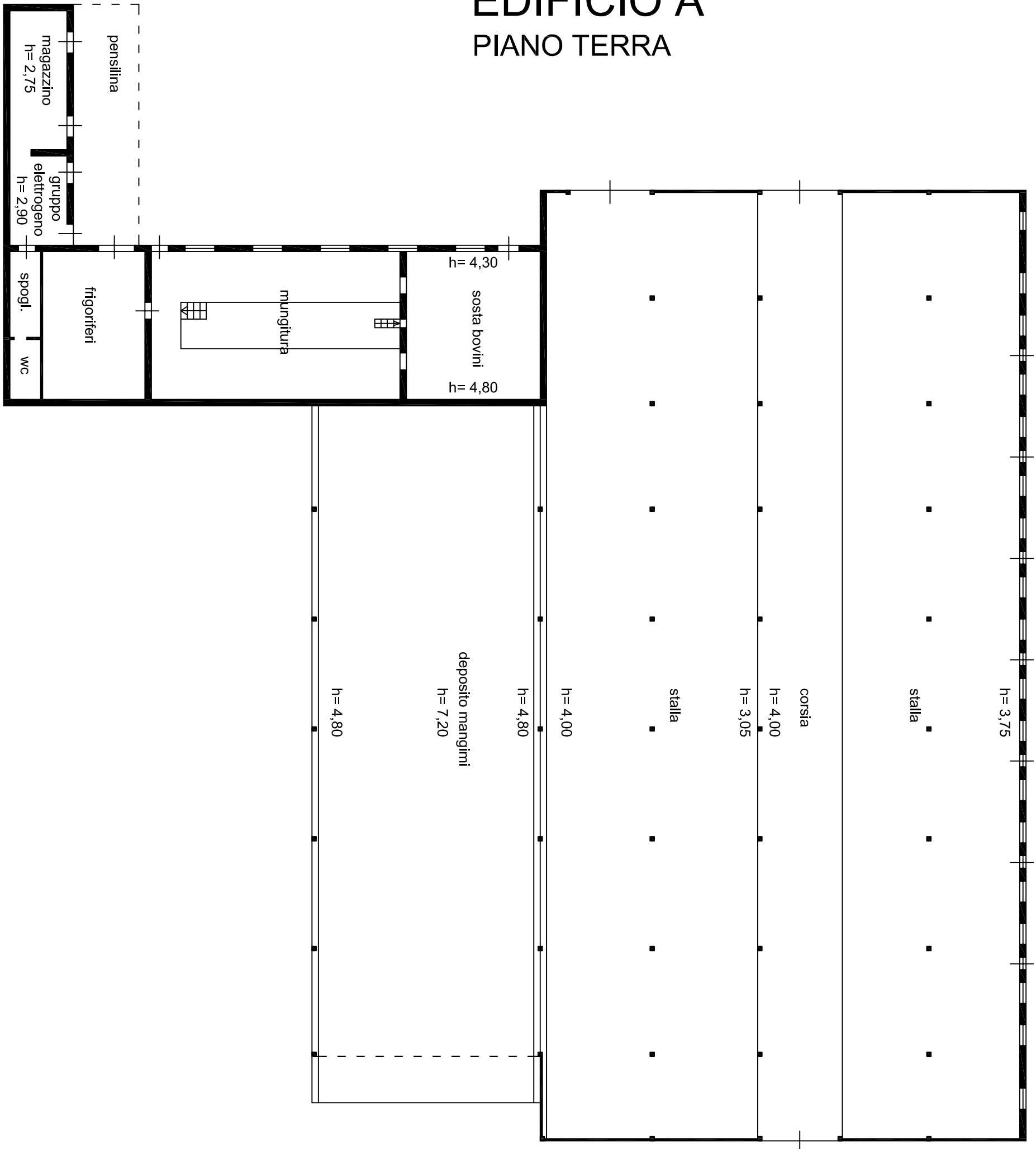


PLANIMETRIA GENERALE
Foglio 4/1 particella 75 sub 2

EDIFICIO A

PIANO TERRA



ESECUZIONE IMMOBILIARE n.16/2011

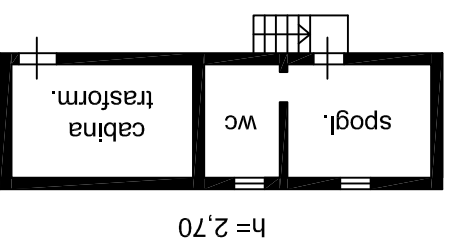
STIMA 1 - Località Cignano, Ascoli Piceno

Scala 1:200

EDIFICIO A

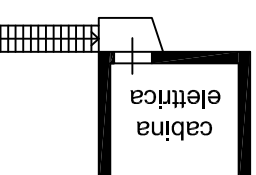
PIANO PRIMO

h = 2,70



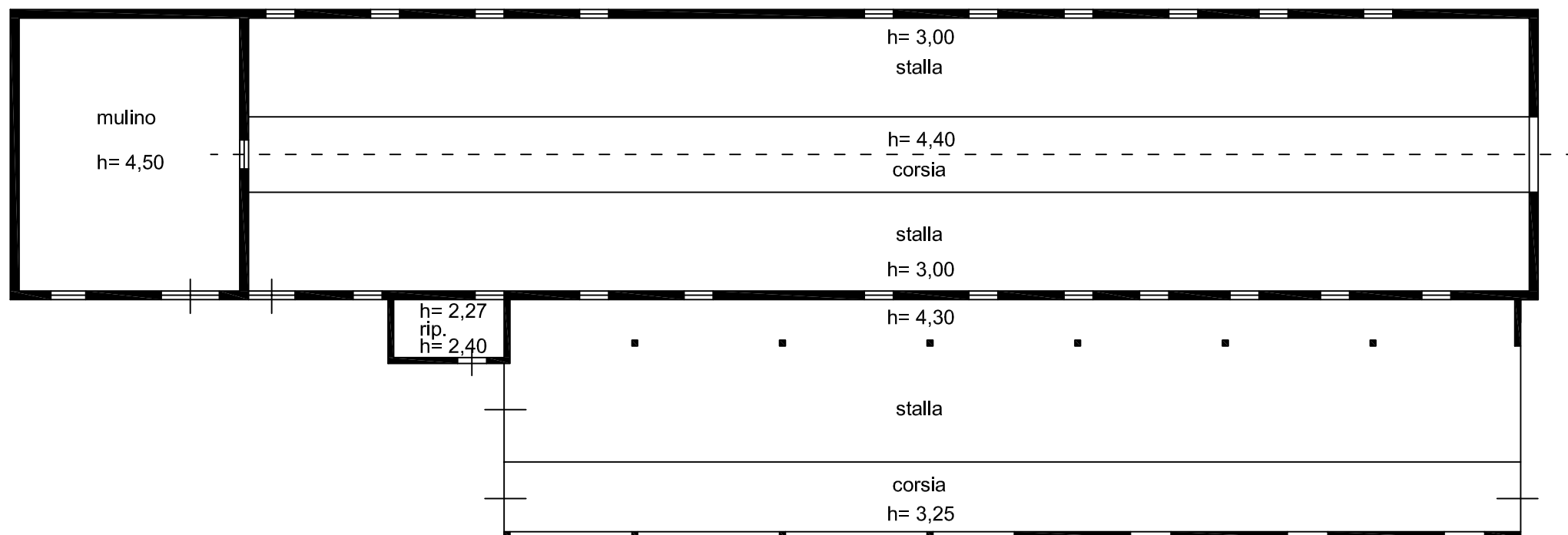
PIANO SECONDO

h = 2,35



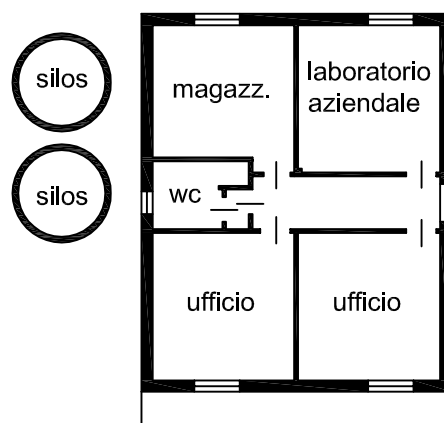
EDIFICIO B

PIANO TERRA



PIANO PRIMO

h= 3,00



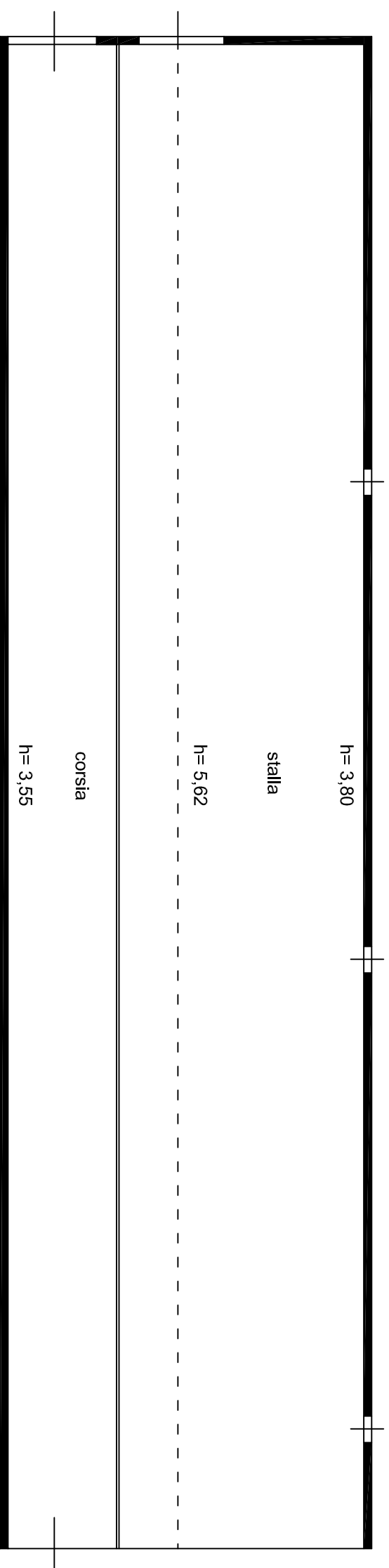
ESECUZIONE IMMOBILIARE n.16/2011

STIMA 1 - Località Cignano, Ascoli Piceno

Scala 1:200

EDIFICIO C

PIANO TERRA

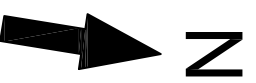
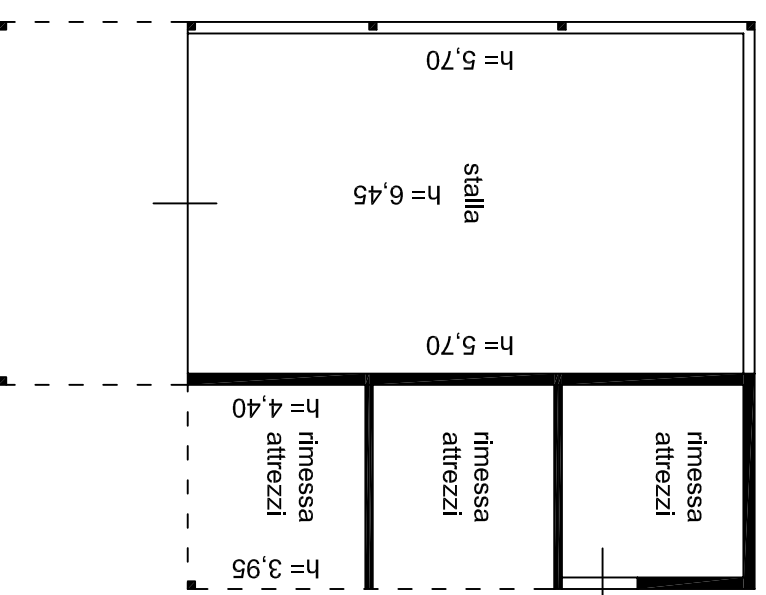


ESECUZIONE IMMOBILIARE n.16/2011

STIMA 1 - Località Cignano, Ascoli Piceno

Scala 1:200

EDIFICIO D PIANO TERRA

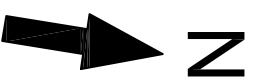
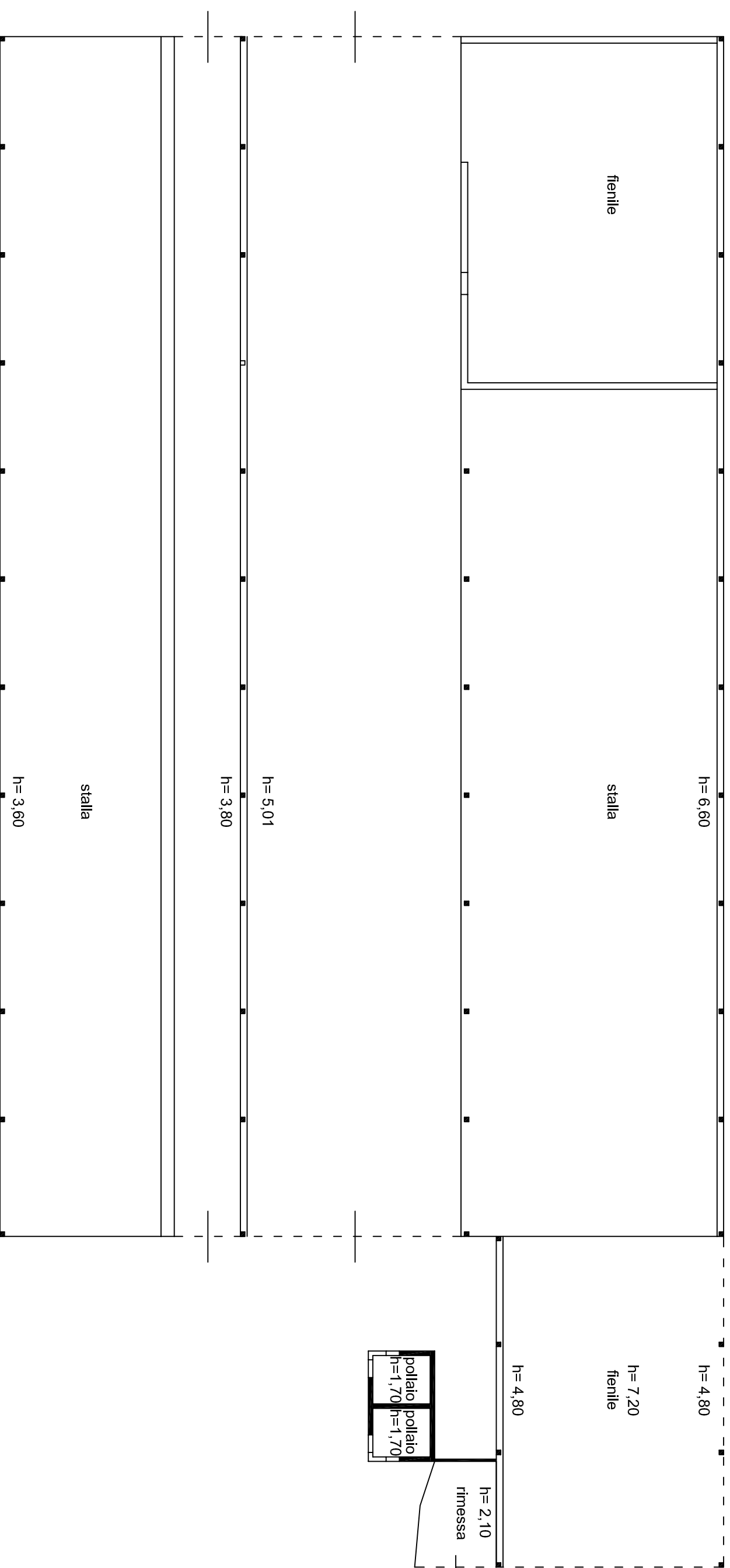


ESECUZIONE IMMOBILIARE n.16/2011

STIMA 1 - Località Cignano, Ascoli Piceno

Scala 1:200

EDIFICIO E PIANO TERRA

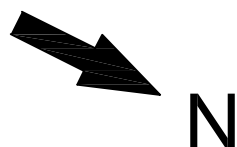
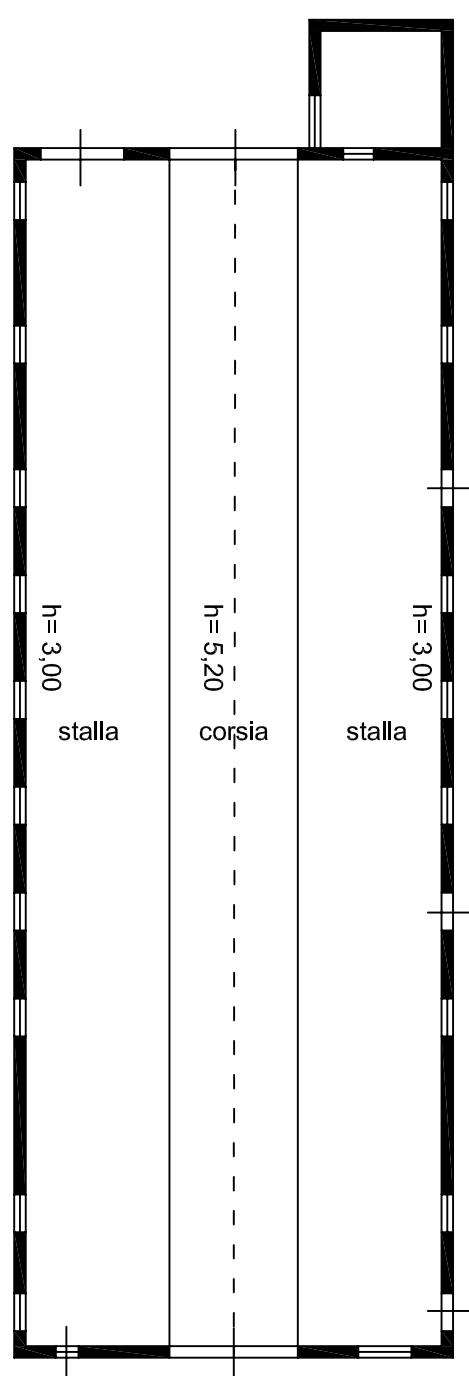


ESECUZIONE IMMOBILIARE n.16/2011

STIMA 1 - Località Cignano, Ascoli Piceno

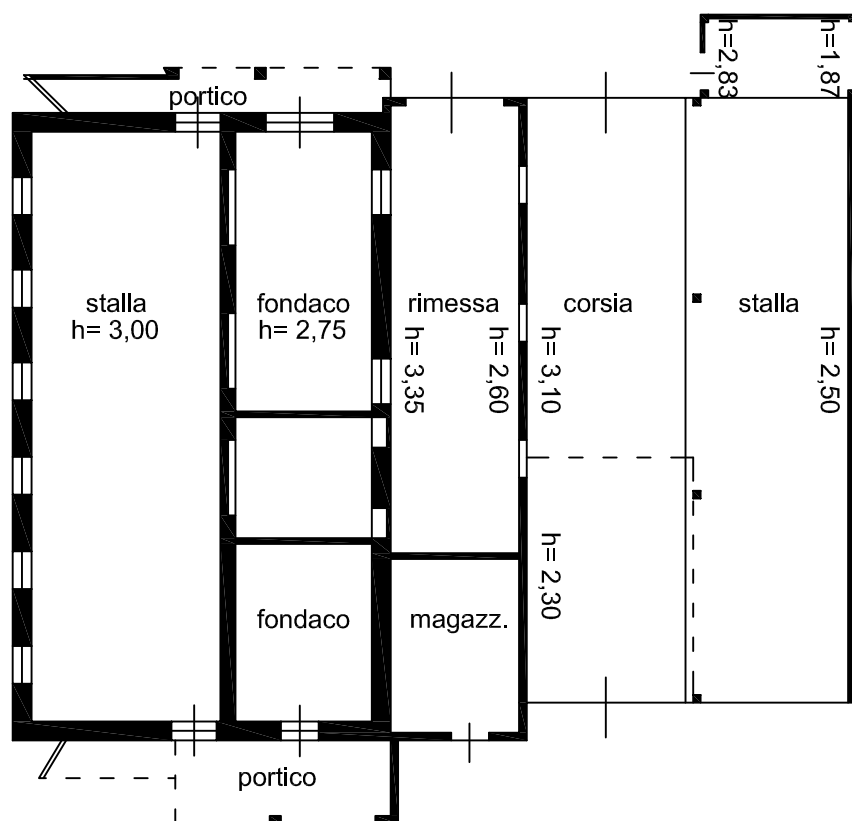
Scala 1:200

EDIFICIO F PIANO TERRA



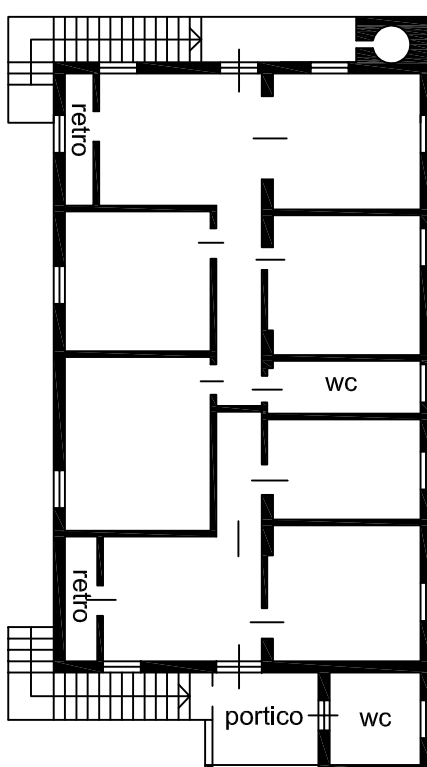
EDIFICIO G

PIANO TERRA



PIANO PRIMO

h= 3,00

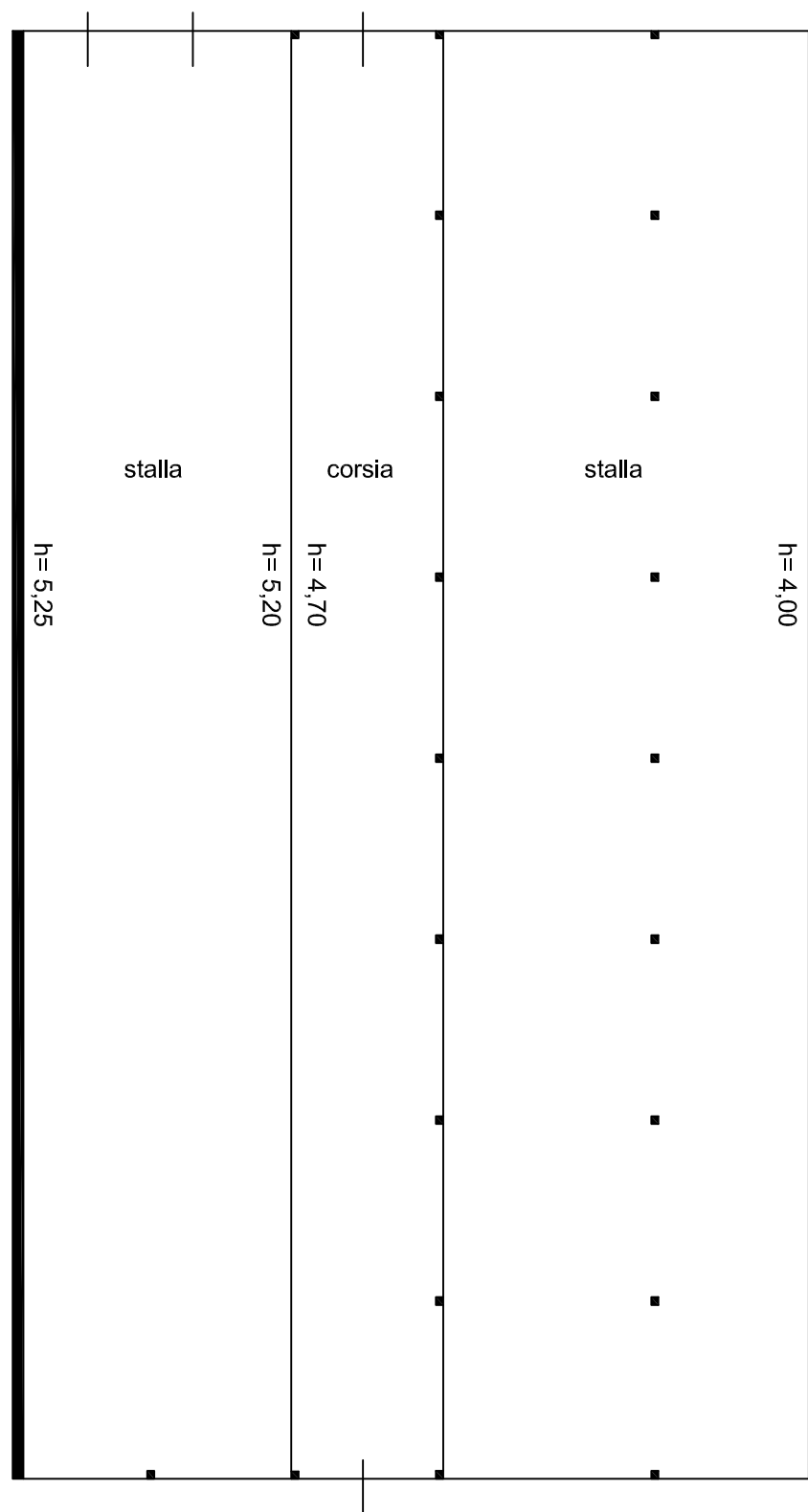


ESECUZIONE IMMOBILIARE n.16/2011

STIMA 1 - Località Cignano, Ascoli Piceno

Scala 1:200

EDIFICIO H PIANO TERRA

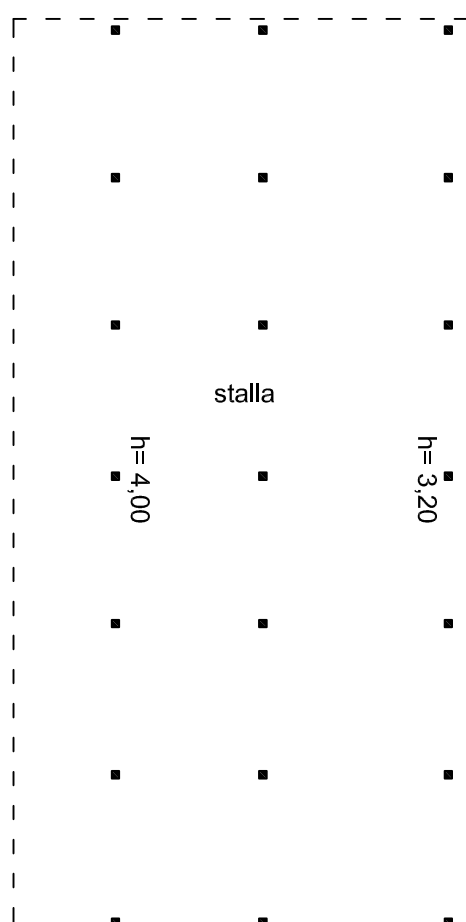


ESECUZIONE IMMOBILIARE n.16/2011

STIMA 1 - Località Cignano, Ascoli Piceno

Scala 1:200

EDIFICIO I PIANO TERRA



ESECUZIONE IMMOBILIARE n.16/2011

STIMA 1 - Località Cignano, Ascoli Piceno

Scala 1:200

PARTICELLA 363

PIANO TERRA

